

WAAS CH 69538 W01A	APP CRS 011°	Rwy Idg 4802 TDZE 358 Apt Elev 358
----------------------------------------	------------------------	---------------------------------------------------------------

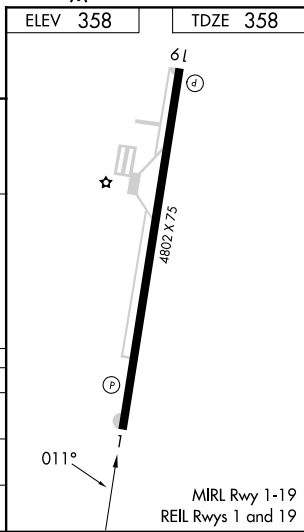
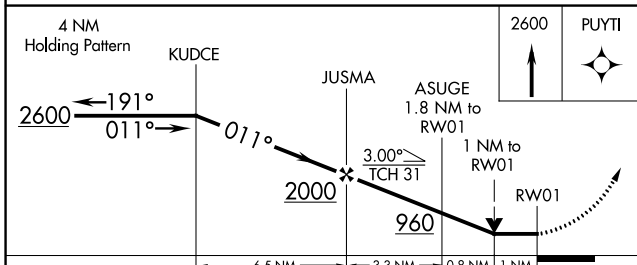
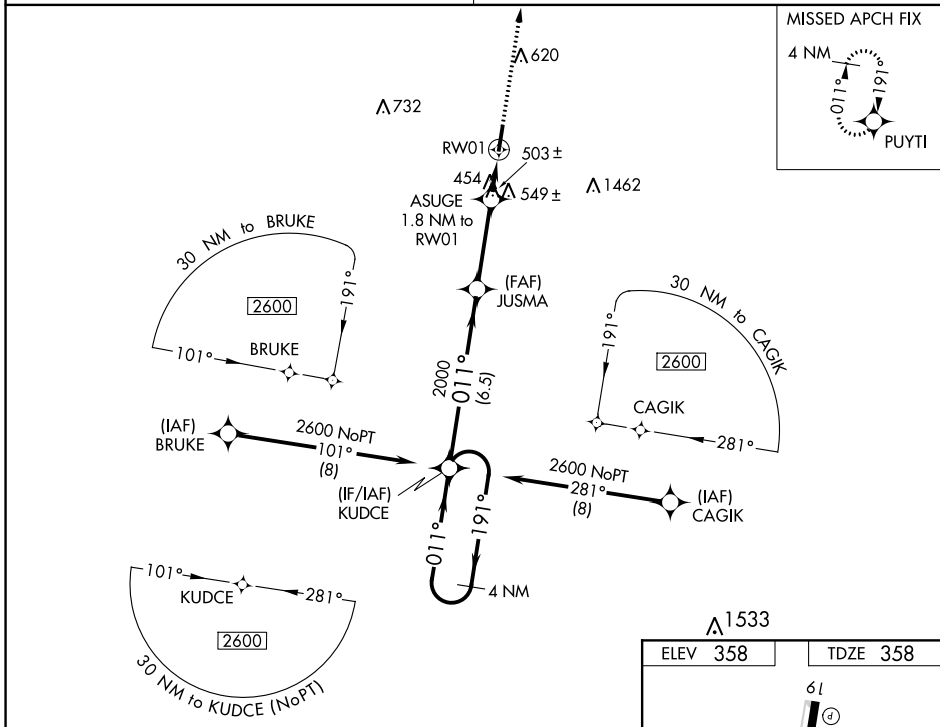
RNAV (GPS) RWY 1

GIBSON COUNTY (TGC)

▼ NA Night landing: Rwy 19 NA. DME/DME RNP-0.3 NA. Helicopter visibility reduction below 3/4 SM NA. Obtain local altimeter setting on CTAF; when not received use McKellar-Sipes Rgnl altimeter setting and increase all MDA 60 feet, increase Circling Cat C visibility 1/4 mile.

MISSED APPROACH: Climb to 2600 direct PUYTI and hold.

MEMPHIS CENTER **134.65 316.15** UNICOM **122.8 (CTAF)**



CATEGORY	A	B	C	D
LP MDA	720-1 362 (400-1)			
LNVA MDA	800-1 442 (500-1)	800-1 3/8 442 (500-1 3/8)		
C CIRCLING	980-1 622 (700-1)	980-1 3/4 622 (700-1 3/4)	1780-3 1422 (1500-3)	

SE-1, 22 FEB 2024 to 21 MAR 2024

SE-1, 22 FEB 2024 to 21 MAR 2024

WAAS CH 72938 W19A	APP CRS 191°	Rwy Idg TDZE Apt Elev	4802 356 358
----------------------------------------	------------------------	-----------------------------	-----------------------------------------

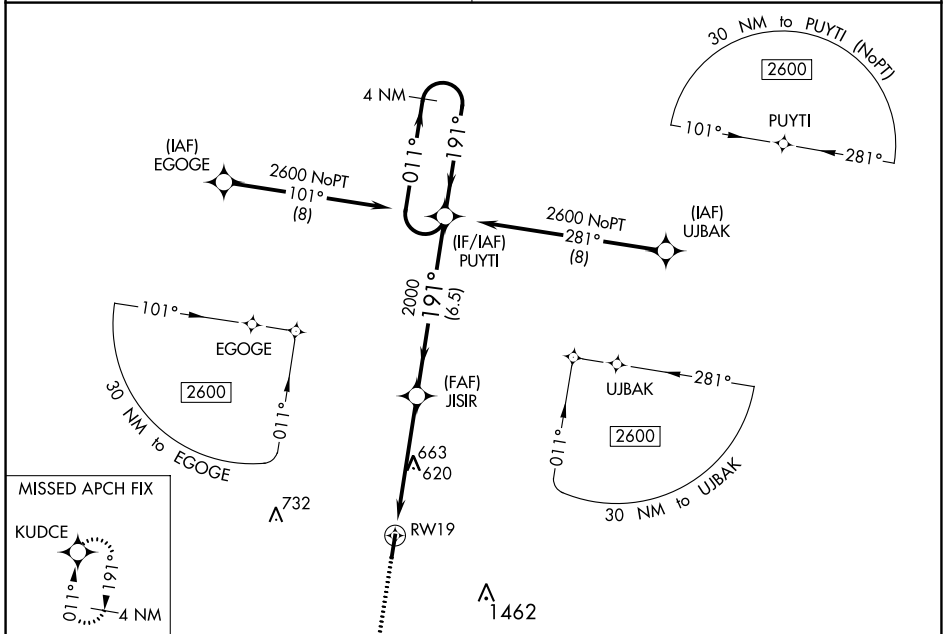
RNAV (GPS) RWY 19

GIBSON COUNTY (TGC)

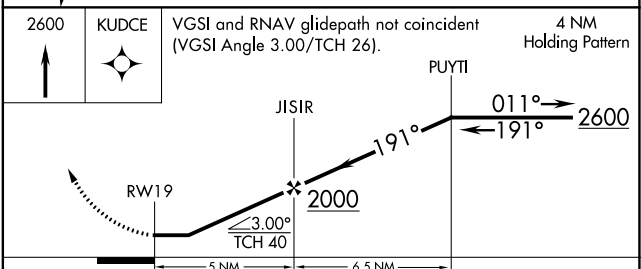
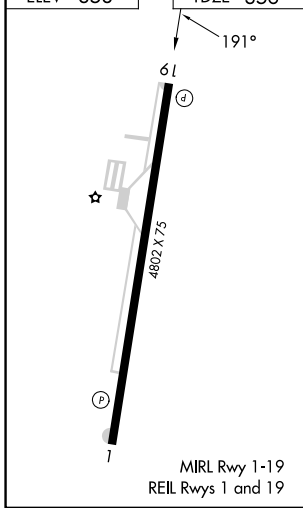
▼ Night landing: Rwy 19 NA. DME/DME RNP-0.3 NA. Helicopter visibility reduction below 1 SM NA. Obtain local altimeter setting on CTAF; when not received use **▲ NA** McKellar-Sipes Rgnl altimeter setting and increase all MDA 60 feet, increase Circling Cat C visibility ¼ mile.

MISSED APPROACH: Climb to 2600 direct KUDCE and hold.

MEMPHIS CENTER 134.65 316.15	UNICOM 122.8 (CTAF)
----------------------------------------	-------------------------------



ELEV 358	TDZE 356
----------	----------



CATEGORY	A	B	C	D
LP MDA	920-1	564 (600-1)	920-1 ⁵ / ₈	564 (600-1 ⁵ / ₈)
LNAV MDA	940-1	584 (600-1)	940-1 ³ / ₄	584 (600-1 ³ / ₄)
C CIRCLING	980-1	622 (700-1)	980-1 ³ / ₄ 622 (700-1 ³ / ₄)	1780-3 1422 (1500-3)

SE-1, 22 FEB 2024 to 21 MAR 2024

SE-1, 22 FEB 2024 to 21 MAR 2024