

LOC/DME I-TDF 108.7 Chan 24	APP CRS 060°	Rwy Idg TDZE Apt Elev 5702 604 609
--	------------------------	--

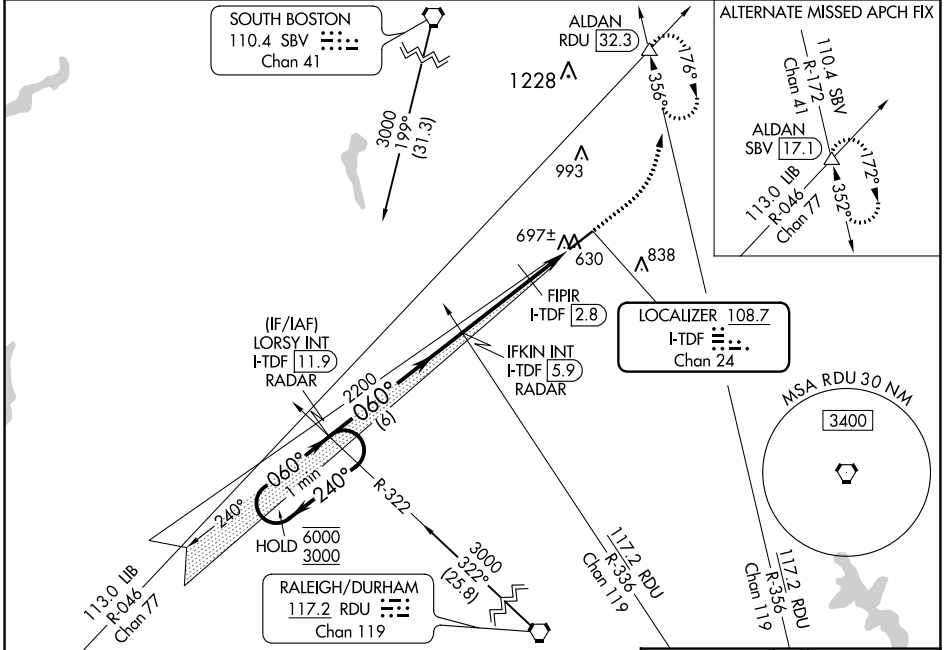
ILS or LOC RWY 6

RALEIGH RGNL AT PERSON COUNTY (TDF)

▼ For inop ALS, increase S-LOC 6 visibility Cats C/D to 1½ SM and increase FIPR fix minimums
▲ NA S-LOC 6 visibility Cats C/D to 1 SM.

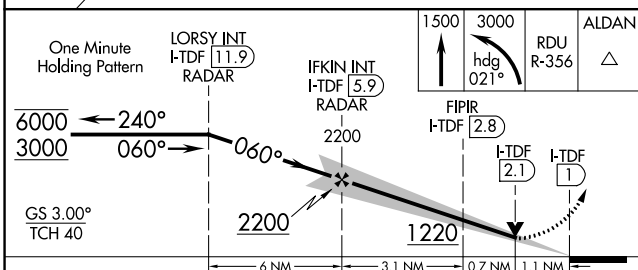
MALSR MISSED APPROACH: Climb to 1500 then climbing left turn to 3000 on heading 021° and on RDU VORTAC R-356 to ALDAN INT/RDU 32.3 DME and hold, continue climb-in-hold to 3000.

AWOS-3 126.725	RALEIGH APP CON 132.35 256.9	GCO 119.7	UNICOM 122.7 (CTAF) 0
--------------------------	--	---------------------	---------------------------------



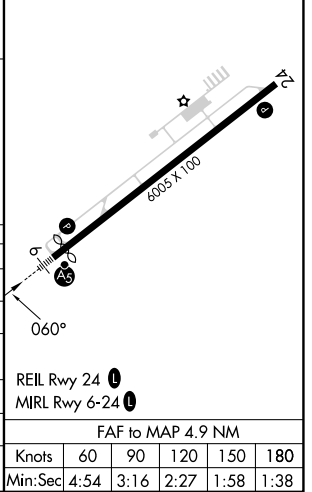
SE-2, 22 FEB 2024 to 21 MAR 2024

SE-2, 22 FEB 2024 to 21 MAR 2024



ELEV 609	TDZE 604
----------	----------

CATEGORY	A	B	C	D
S-ILS 6	804-½ 200 (200-½)			
S-LOC 6	1220-½	616 (700-½)	1220-1⅜	616 (700-1⅜)
CIRCLING	1220-1	611 (700-1)	1300-2 691 (700-2)	1300-2¼ 691 (700-2¼)
FIPR FIX MINIMUMS				
S-LOC 6	980-½	376 (400-½)	980-⅝	376 (400-⅝)
CIRCLING	1080-1	471 (500-1)	1300-2 691 (700-2)	1300-2¼ 691 (700-2¼)



FAF to MAP 4.9 NM					
Knots	60	90	120	150	180
Min:Sec	4:54	3:16	2:27	1:58	1:38

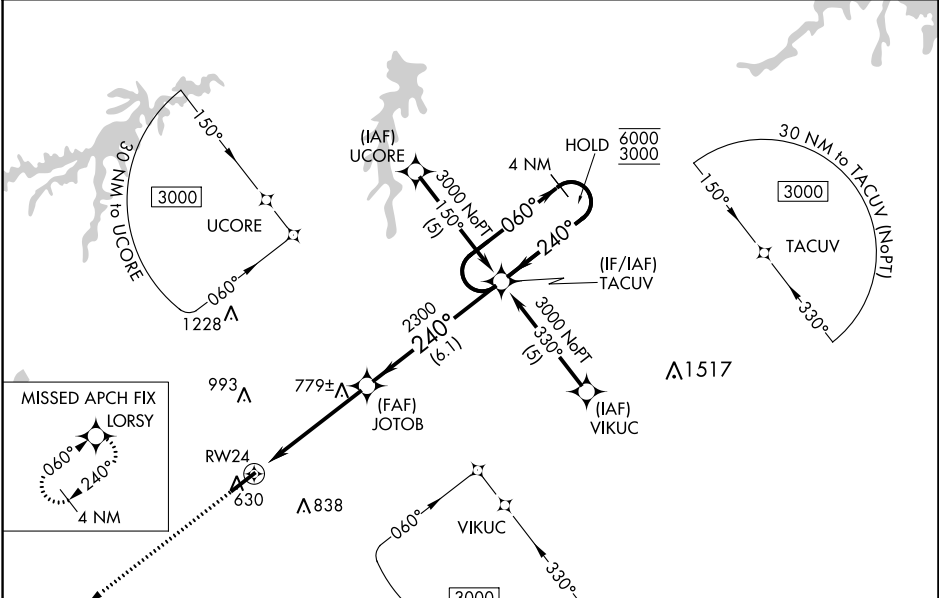
WAAS CH 50510 W24A	APP CRS 240°	Rwy Idg TDZE Apt Elev	6005 609 609
--	------------------------	-----------------------------	---

RNAV (GPS) RWY 24
RALEIGH RGNL AT PERSON COUNTY (TDF)

RNP APCH.
 ▼ Rwy 24 helicopter visibility reduction below ¾ SM NA. For uncompensated
 ▲ Baro-VNAV systems, LNAV/VNAV NA below -16°C or above 54°C.

MISSED APPROACH:
Climb to 3000 direct
LORSY and hold.

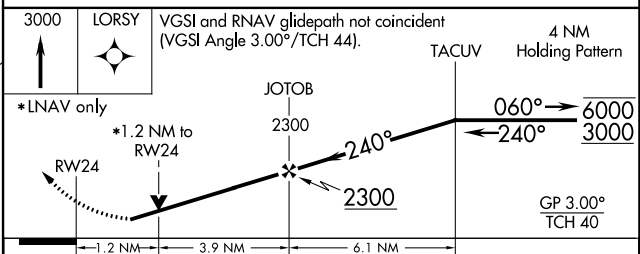
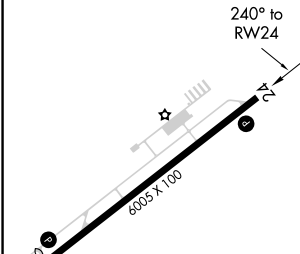
AWOS-3 126.725	RALEIGH APP CON 132.35 256.9	GCO 119.7	UNICOM 122.7 (CTAF) 0
--------------------------	--	---------------------	---------------------------------



SE-2, 22 FEB 2024 to 21 MAR 2024

SE-2, 22 FEB 2024 to 21 MAR 2024

ELEV 609	TDZE 609
-----------------	-----------------



CATEGORY	A	B	C	D
LPV DA		920-1	311 (400-1)	
LNAV/VNAV DA		997-1½	388 (400-1½)	
LNAV MDA	1040-1	431 (500-1)	1040-1¼ 431 (500-1¼)	1040-1½ 431 (500-1½)
CIRCLING	1080-1	471 (500-1)	1300-2 691 (700-2)	1300-2¼ 691 (700-2¼)

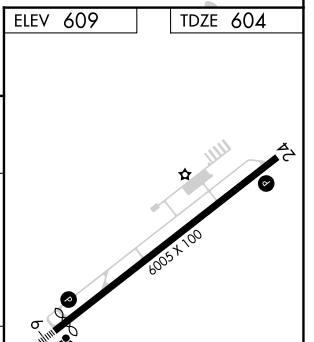
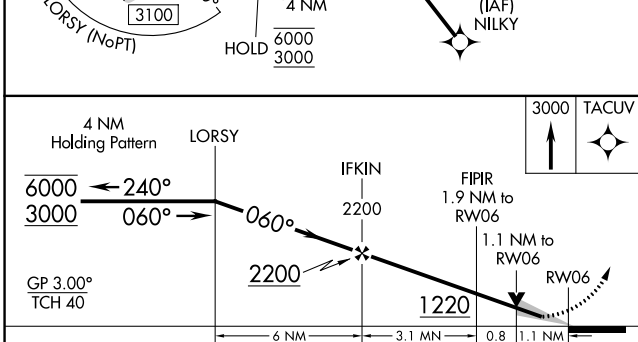
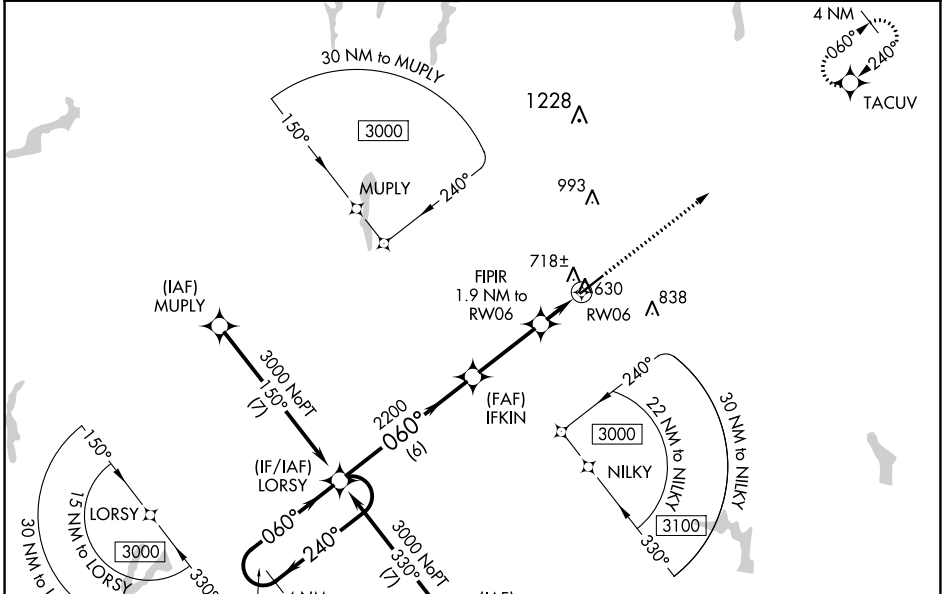
REIL Rwy 24 0
MIRL Rwy 6-24 0

WAAS CH 86512 W06A	APP CRS 060°	Rwy Idg 5702 TDZE 604 Apt Elev 609
--	------------------------	---

RNAV (GPS) RWY 6
RALEIGH RGNL AT PERSON COUNTY (TDF)

RNP APCH - GPS.	MALSR	MISSED APPROACH: Climb to 3000 direct TACUV and hold.
<p>⚠ For uncompensated Baro-VNAV systems, LNAV/VNAV NA below -16°C or above 54°C. For inop ALS, increase LNAV/VNAV all Cats visibility to ½ SM and LNAV Cat C/D visibility to 1 SM.</p>		

AWOS-3 126.725	RALEIGH APP CON 132.35 256.9	GCO 119.7	UNICOM 122.7 (CTAF) 0
--------------------------	--	---------------------	--



CATEGORY	A	B	C	D
LPV DA		804-½	200 (200-½)	
LNAV/VNAV DA		879-½	275 (300-1½)	
LNAV MDA	980-½	376 (400-½)	980-⅝	376 (400-⅝)
CIRCLING	1080-1	471 (500-1)	1300-2 691 (700-2)	1300-2¼ 691 (700-2¼)

ELEV 609 | TDZE 604

REIL Rwy 24 **0**
MIRL Rwy 6-24 **0**

SE-2, 22 FEB 2024 to 21 MAR 2024

SE-2, 22 FEB 2024 to 21 MAR 2024