

WAAS CH <b>99739</b> <b>W12A</b>	APP CRS <b>124°</b>	Rwy Idg <b>3500</b> TDZE <b>41</b> Apt Elev <b>42</b>
--	------------------------	---

# RNAV (GPS) RWY 12

TAUNTON MUNI - KING FLD (TAN)

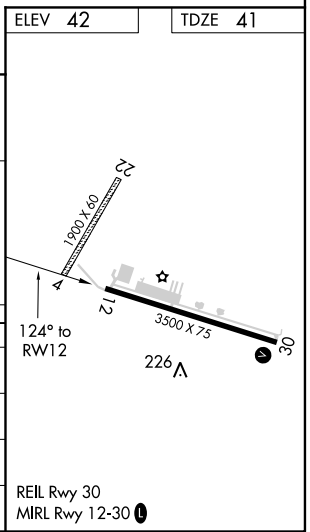
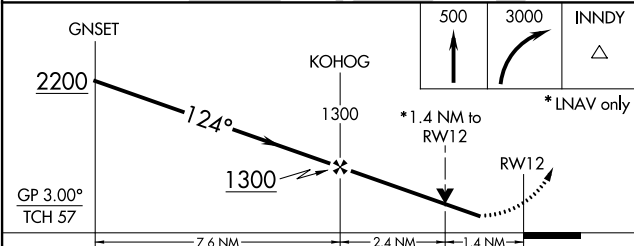
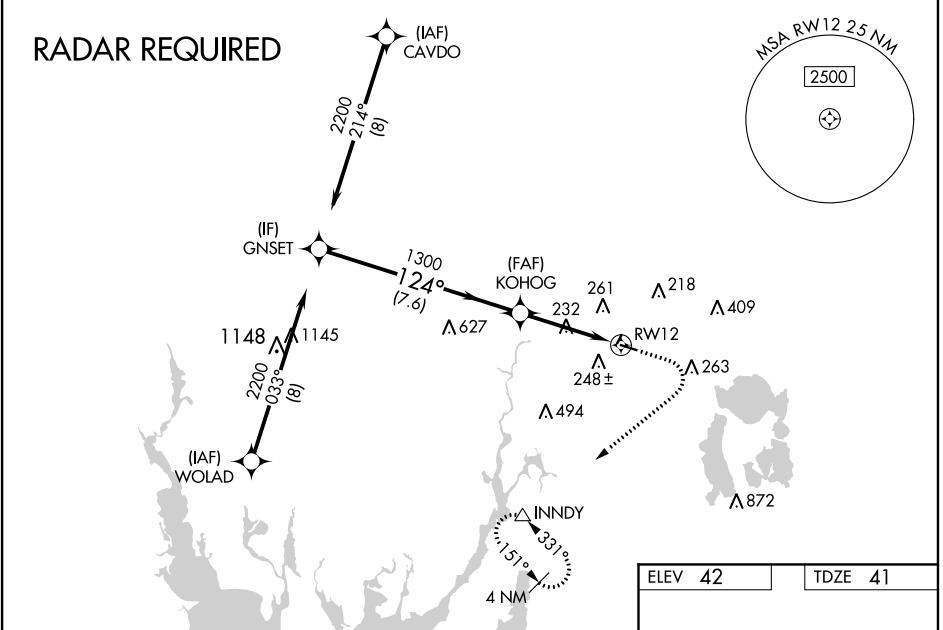
**⚠** Circling NA to Rwy's 4 and 22. For uncompensated Baro-VNAV systems, LNAV/VNAV NA below -3°C (27°F) or above 54°C (130°F). Baro-VNAV NA when using New Bedford altimeter setting. DME/DME RNP-0.3 NA. Rwy 12 helicopter visibility reduction below ¼ SM NA. When local altimeter setting not received, use New Bedford altimeter setting and increase LPV DA to 425 feet, LNAV/VNAV DA to 448 feet and all MDA 40 feet, increase LPV and LNAV/VNAV visibilities all Cats ½ SM, increase LNAV Cat C/D visibility ½ SM, and increase Circling Cat D visibility ¼ SM.

**MISSED APPROACH:** (Do not exceed 210K until INNDY) Climb to 500 then climbing right turn to 3000 direct INNDY and hold, continue climb in hold to 3000.

ASOS  
**132.675**

PROVIDENCE APP CON\*  
**128.7 269.525**

UNICOM  
**122.7 (CTAF) 0**



CATEGORY	A	B	C	D
LPV DA	391-1½		350 (400-1½)	
LNAV/VNAV DA	414-1¼		373 (400-1¼)	
LNAV MDA	540-1 499 (500-1)		540-1¾ 499 (500-1¾)	
<b>C</b> CIRCLING	560-1 518 (600-1)	580-1 538 (600-1)	660-1¾ 618 (700-1¾)	760-2¼ 718 (800-2¼)

NE-1, 09 SEP 2021 to 07 OCT 2021

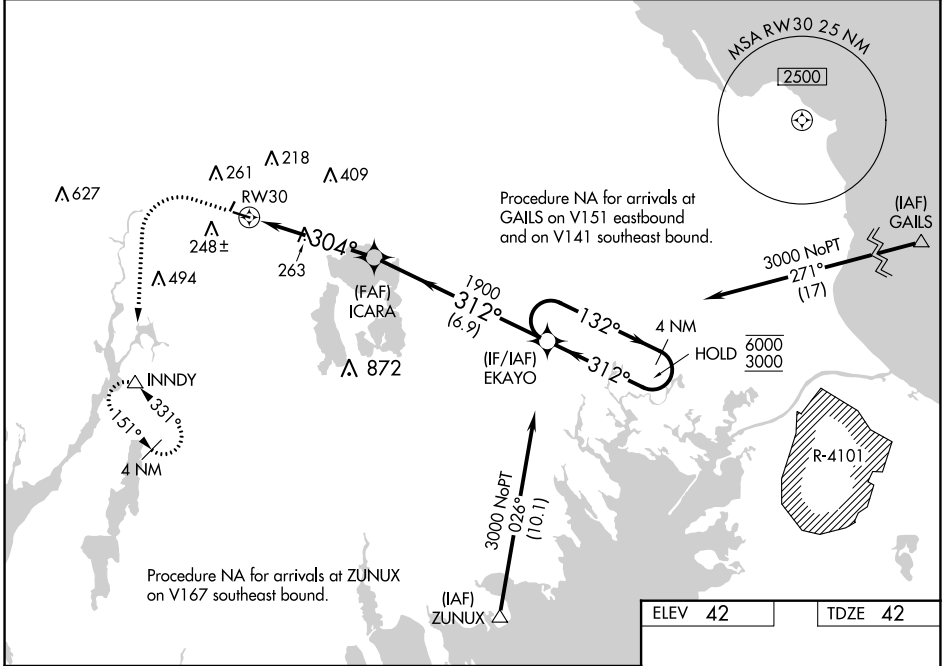
NE-1, 09 SEP 2021 to 07 OCT 2021

WAAS CH <b>58139</b> <b>W30A</b>	APP CRS <b>304°</b>	Rwy Idg TDZE Apt Elev	<b>3500</b> <b>42</b> <b>42</b>
--	------------------------	-----------------------------	---------------------------------------

# RNAV (GPS) RWY 30

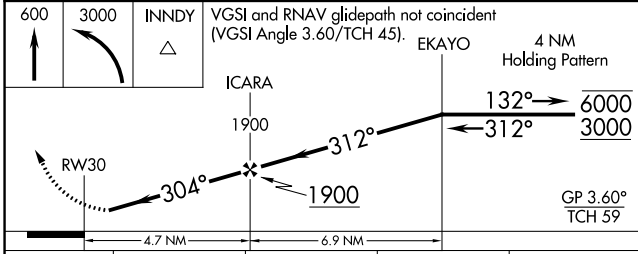
TAUNTON MUNI - KING FLD (TAN)

<p>RNP APCH.</p> <p><b>▽</b> Circling NA to Rws 4 and 22. Rwy 30 helicopter visibility reduction below 1 SM NA. For uncompensated Baro-VNAV systems, LNAV/VNAV NA below -23°C or above 46°C.</p>		<p>MISSED APPROACH: (Do not exceed 210K until INNDY) Climb to 600 then climbing left turn to 3000 direct INNDY and hold. Continue climb in hold to 3000.</p>
<p>ASOS <b>132.675</b></p>	<p>PROVIDENCE APP CON * <b>128.7 269.525</b></p>	<p>UNICOM <b>122.7 (CTAF) 0</b></p>

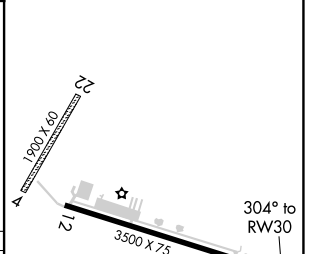


NE-1, 09 SEP 2021 to 07 OCT 2021

NE-1, 09 SEP 2021 to 07 OCT 2021



ELEV 42	TDZE 42
---------	---------



CATEGORY	A	B	C	D
LPV DA	388-1	346 (400-1)		NA
LNAV/VNAV DA	526-1 $\frac{3}{8}$	484 (500-1 $\frac{1}{2}$ )		NA
LNAV MDA	600-1	558 (600-1)	600-1 $\frac{5}{8}$ 558 (600-1 $\frac{1}{2}$ )	NA
<b>C</b> CIRCLING	600-1	558 (600-1)	660-1 $\frac{3}{4}$ 618 (700-1 $\frac{3}{4}$ )	NA

REIL Rwy 30  
MIRL Rwy 12-30 0