

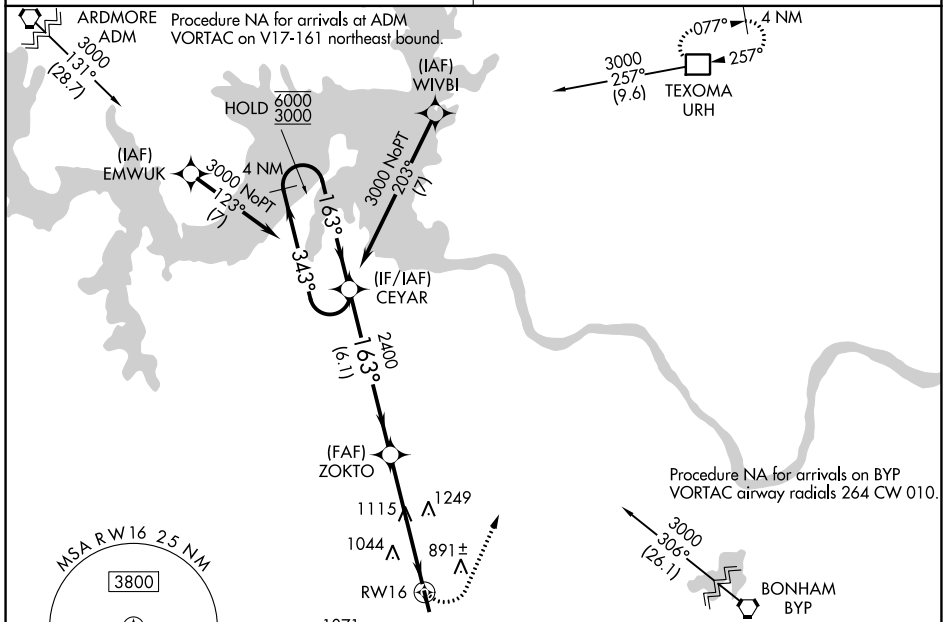
APP CRS	Rwy Idg	<b>4000</b>
<b>163°</b>	TDZE	<b>746</b>
	Apt Elev	<b>746</b>

# RNAV (GPS) RWY 16

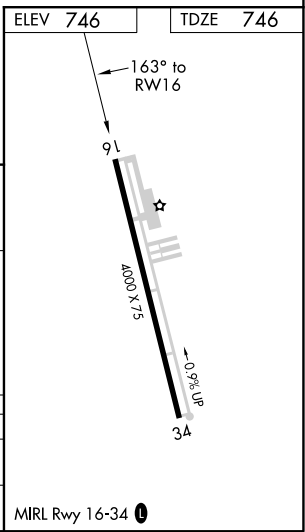
SHERMAN MUNI (SWI)

RNP APCH	<p>Use Sherman/Denison altimeter setting, if not received use Dallas Love Field altimeter setting and increase all MDA 140 feet and increase LNAV visibility Cat B ¼ SM, Cat C ½ SM, and increase Circling visibility Cats A/B ¼ SM, Cat C ½ SM. Procedure NA at night. Rwy 16 helicopter visibility reduction below 1 SM NA.</p>	<p>MISSED APPROACH: Climbing left turn to 3000 direct URH DME and hold.</p>
----------	---	---

<p>FORT WORTH CENTER <b>124.75 323.0</b></p>	<p>UNICOM <b>122.8 (CTAF) 0</b></p>
--	---



4 NM Holding Pattern		CEYAR	ZOKTO	RW16
6000	← 343°	→ 163°	163°	3.00° TCH 45
3000			2400	
		6.1 NM	5.1 NM	
CATEGORY	A	B	C	D
LNAV MDA	1440-1	694 (700-1)	1440-2 694 (700-2)	NA
CIRCLING	1440-1	694 (700-1)	1620-2½ 874 (900-2½)	NA



SC-2, 28 JAN 2021 to 25 FEB 2021

SC-2, 28 JAN 2021 to 25 FEB 2021

WAAS CH <b>86534</b> <b>W34A</b>	APP CRS <b>343°</b>	Rwy Idg TDZE Apt Elev	<b>4000</b> <b>739</b> <b>746</b>
--	------------------------	-----------------------------	---

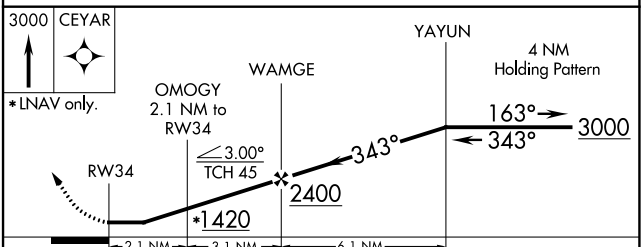
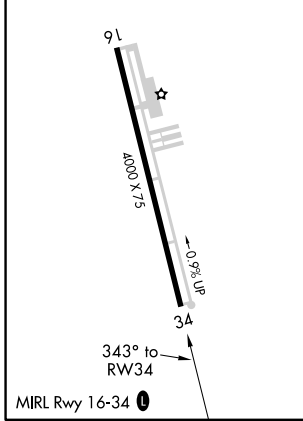
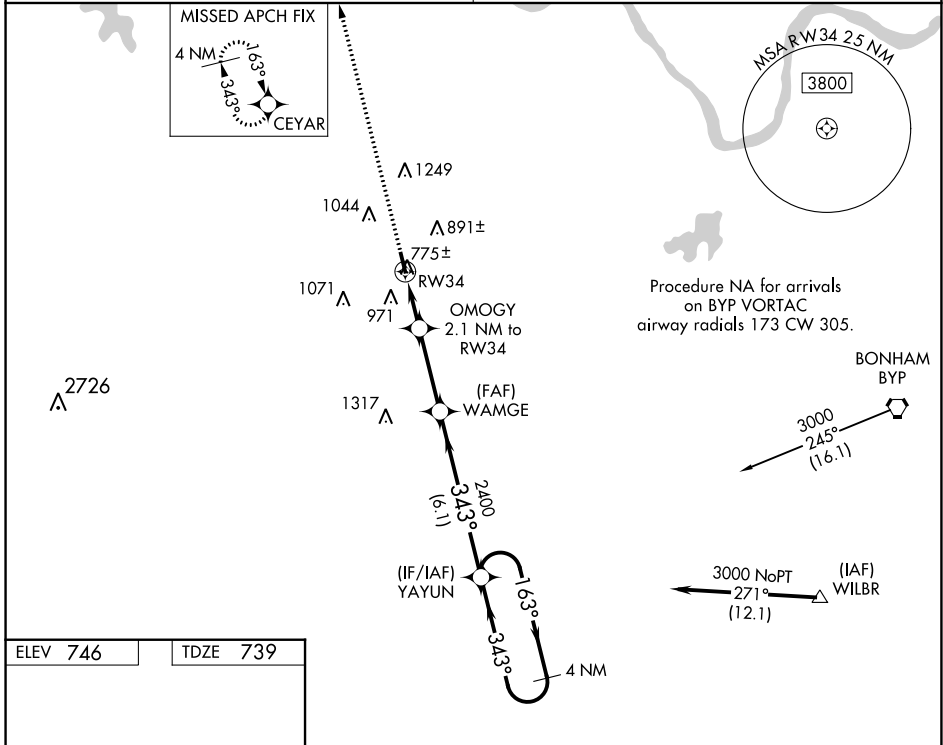
# RNAV (GPS) RWY 34

SHERMAN MUNI (SWI)

**NA** DME/DME RNP-0.3 NA. Use Sherman/Denison altimeter setting, if not received, use Dallas-Love Field altimeter setting and increase all MDA 140 feet; increase LP and LNAV Cat C visibility 3/8 mile, Circling Cat B visibility 1/4 mile and Cat C visibility 1/2 mile. Procedure NA at night. Helicopter visibility reduction below 1 SM NA.

**MISSED APPROACH:**  
Climb to 3000 direct CEYAR and hold.

FORT WORTH CENTER <b>124.75 323.0</b>	UNICOM <b>122.8 (CTAF) 0</b>
--	---------------------------------



CATEGORY	A	B	C	D
LP MDA	1060-1 321 (400-1)			NA
LNAV MDA	1100-1	361 (400-1)	1100-1 3/8 361 (400-1 1/8)	NA
<b>C</b> CIRCLING	1300-1 554 (600-1)	1420-1 674 (700-1)	1620-2 1/2 874 (900-2 1/2)	NA

SC-2, 28 JAN 2021 to 25 FEB 2021

SC-2, 28 JAN 2021 to 25 FEB 2021

VORTAC BYP <b>114.6</b> Chan <b>93</b>	APP CRS <b>280°</b>	Rwy Idg TDZE Apt Elev <b>N/A</b> <b>N/A</b> <b>746</b>
--	------------------------	---

# VOR/DME-A

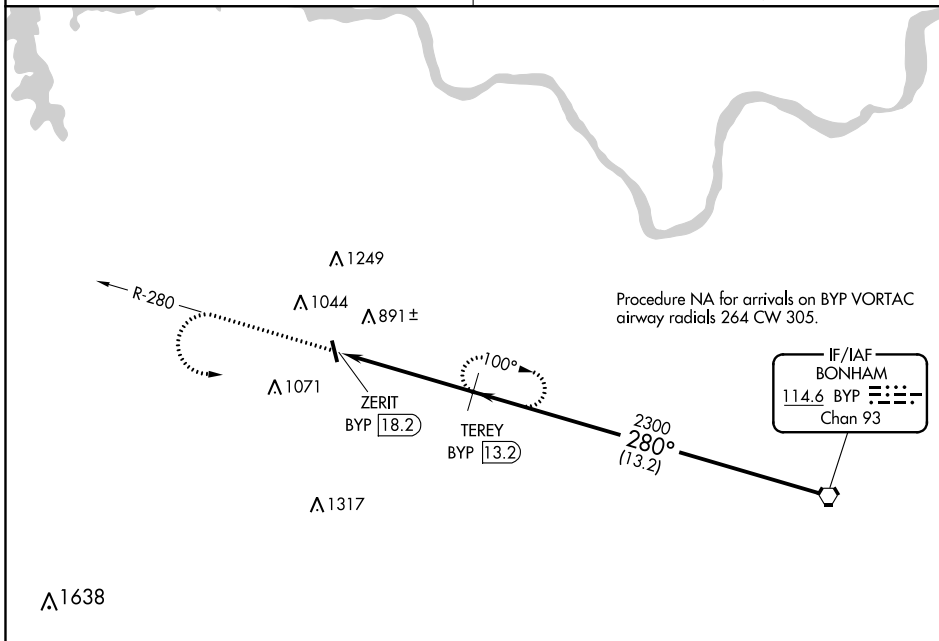
SHERMAN MUNI (SWI)

**⚠** Use Sherman/Denison altimeter setting, when not received, use Dallas-Love Field altimeter setting and increase all MDA 140 feet, increase visibility Cat B ¼ mile, Cat C ½ mile, and Cat D ¼ mile. Procedure NA at night.  
**⚠ NA** Helicopter visibility reduction below 1 SM NA.

**MISSED APPROACH:** Climb to 2300, then climbing left turn to 2400 on BYP R-280 to TEREY/13.2 DME and hold.

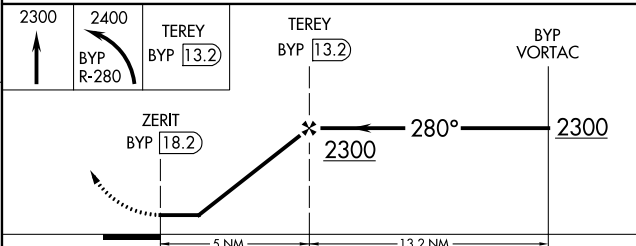
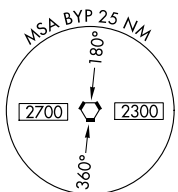
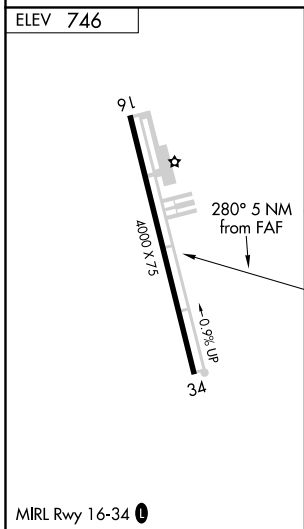
FORT WORTH CENTER  
**124.75 323.0**

UNICOM  
**122.8 (CTAF) 0**



SC-2, 28 JAN 2021 to 25 FEB 2021

SC-2, 28 JAN 2021 to 25 FEB 2021



CATEGORY	A	B	C	D
<b>C</b> CIRCLING	1300-1 554 (600-1)	1420-1 674 (700-1)	1620-2½ 874 (900-2½)	1620-2¾ 874 (900-2¾)