

LOC/DME I-STF 109.9 Chan 36	APP CRS 360°	Rwy Idg 5550 TDZE 326 Apt Elev 333
-------------------------------------------------	------------------------	---------------------------------------------------------------

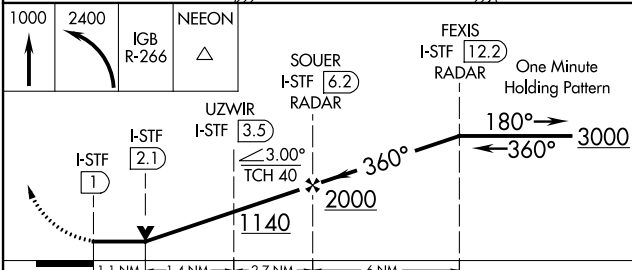
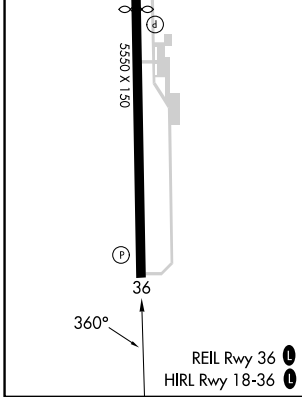
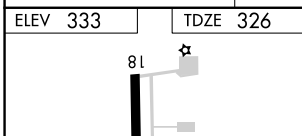
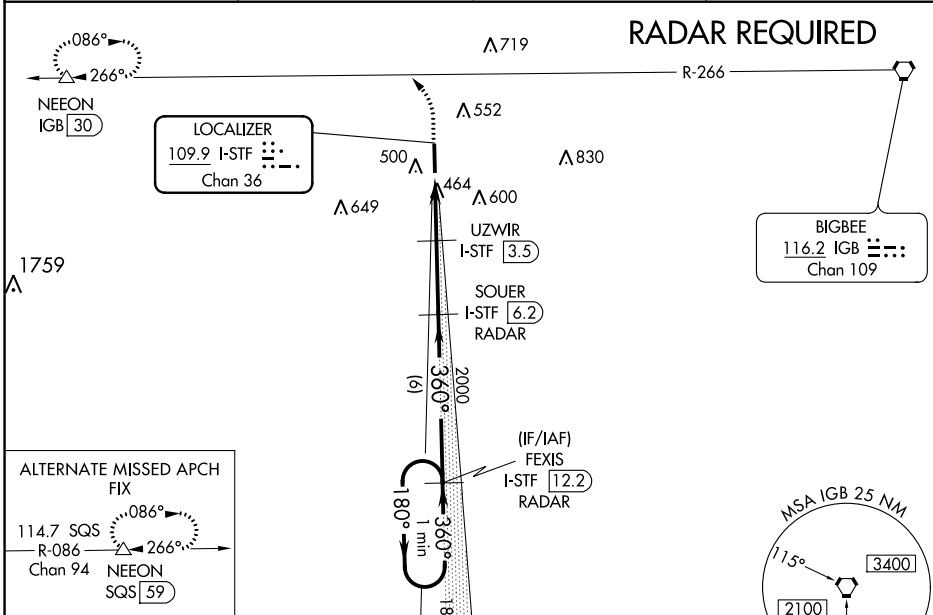
LOC/DME RWY 36

GEORGE M BRYAN (STF)

NA DME Required. When local altimeter setting not received, use Golden Triangle altimeter setting and increase all MDA 40 feet; increase S-36 Cats C/D visibility 1/8 mile and Circling Cat C visibility 1/4 mile. VDP NA when using Golden Triangle altimeter setting.

MISSED APPROACH: Climb to 1000, then climbing left turn to 2400 on IGB VORTAC R-266 to NEEON/IGB 30 DME and hold.

AWOS-3PT 118.975	COLUMBUS APP CON ★ 135.6 323.275	CLNC DEL 126.25	UNICOM 122.7 (CTAF) 0
----------------------------	--------------------------------------------	---------------------------	---------------------------------



CATEGORY	A	B	C	D
S-36	720-1	395 (400-1)	720-1 1/8	395 (400-1 1/8)
CIRCLING	920-1	587 (600-1)	920-1 1/2	1020-2 1/4
			587 (600-1 1/2)	687 (700-2 1/4)

SC-4, 22 FEB 2024 to 21 MAR 2024

SC-4, 22 FEB 2024 to 21 MAR 2024

WAAS CH 53604 W36A	APP CRS 360°	Rwy Idg 5550 TDZE 326 Apt Elev 333
----------------------------------------	------------------------	---------------------------------------------------------------

RNAV (GPS) RWY 36

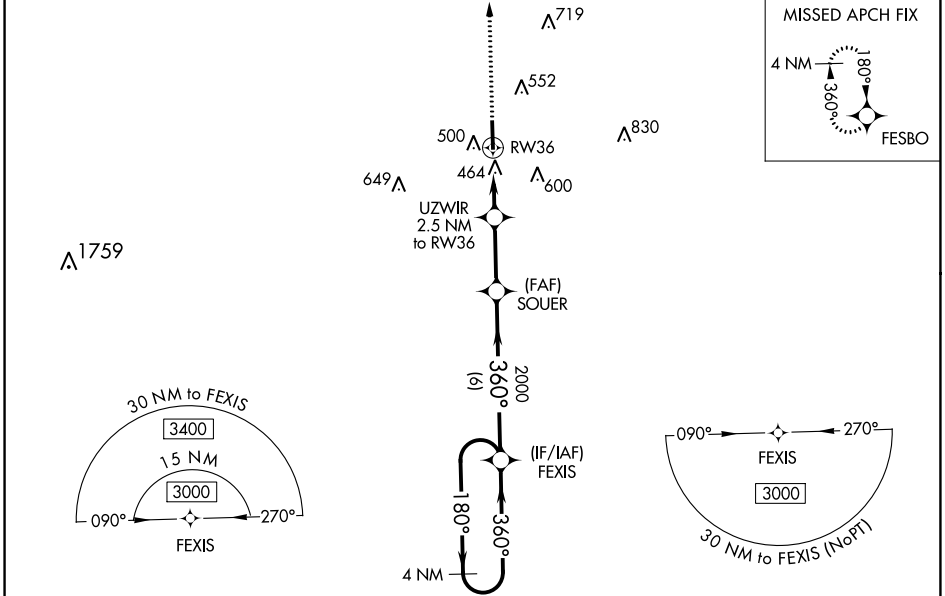
GEORGE M BRYAN (STF)

RNP APCH-GPS.

⚠ For uncompensated Baro-VNAV systems, LNAV/VNAV NA below -15°C or above 54°C .
⚠ When local altimeter setting not received, use Golden Triangle Rgnl altimeter setting and increase LPV DA to 566 feet; increase LNAV/VNAV DA to 690 feet; increase all MDAs 40 feet and LNAV visibility Cat C/D 1/8 SM, and Circling visibility Cat C 1/4 SM. Baro-VNAV and VDP NA when using Golden Triangle Rgnl altimeter setting.

MISSED APPROACH: Climb to 3400 direct FESBO and hold, continue climb-in-hold to 3400.

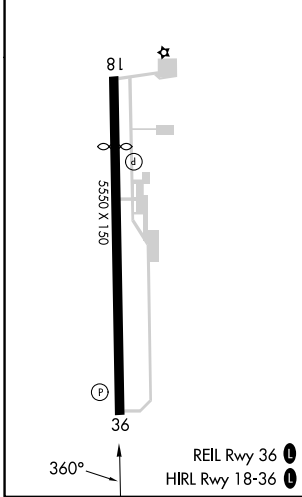
AWOS-3PT 118.975	COLUMBUS APP CON* 135.6 323.275	CLNC DEL 126.25	UNICOM 122.7 (CTAF)
----------------------------	-------------------------------------------	---------------------------	-------------------------------



SC-4, 22 FEB 2024 to 21 MAR 2024

SC-4, 22 FEB 2024 to 21 MAR 2024

ELEV 333	TDZE 326
-----------------	-----------------



3400	FESBO	R-4404 B & C			
*LNAV only.	UZWIR 2.5 NM to RW36	SOUER 2000	FEXIS	4 NM Holding Pattern	
RW36	*1.1 NM to RW36	*1140	2000	180° → 3000	← 360°
1.1 NM	1.4 NM	2.7 NM	6 NM	GP 3.00° TCH 40	
CATEGORY	A	B	C	D	
LPV DA	526-3/4		200 (200-3/4)		
LNAV/VNAV DA	650-1		324 (400-1)		
LNAV MDA	720-1	394 (400-1)	720-1 1/8	394 (400-1/8)	
<input checked="" type="checkbox"/> CIRCLING	920-1	587 (600-1)	920-1 1/2	1020-2 1/4	687 (700-2 1/4)