

# HILLS or LOC Z RWY 22R

LOC (H)WU	APCH CRS	Rwy Idg	22R	22L
<b>108.7</b>	<b>223°</b>	TDZE	<b>240</b>	<b>235</b>
		Appr Elev	<b>241</b>	<b>241</b>

JAL-409 [USAF]

SHAW AFB (KSSC)

RADAR or DME Required:

▼\* When A1S Inop, increase RVR to 40 and vis to ½ mile.  
 \*\* When A1S Inop, increase vis to 1 ½ miles.

A1S F-1

MISSED APPROACH: Climbing to 2000, intercept SSC TACAN R-223 to PINE and hold.

A1TS \*  
**132.125 270.1**

SHAW APP CON  
**125.4 318.1**

SHAW TOWER \*  
**126.65 254.25**

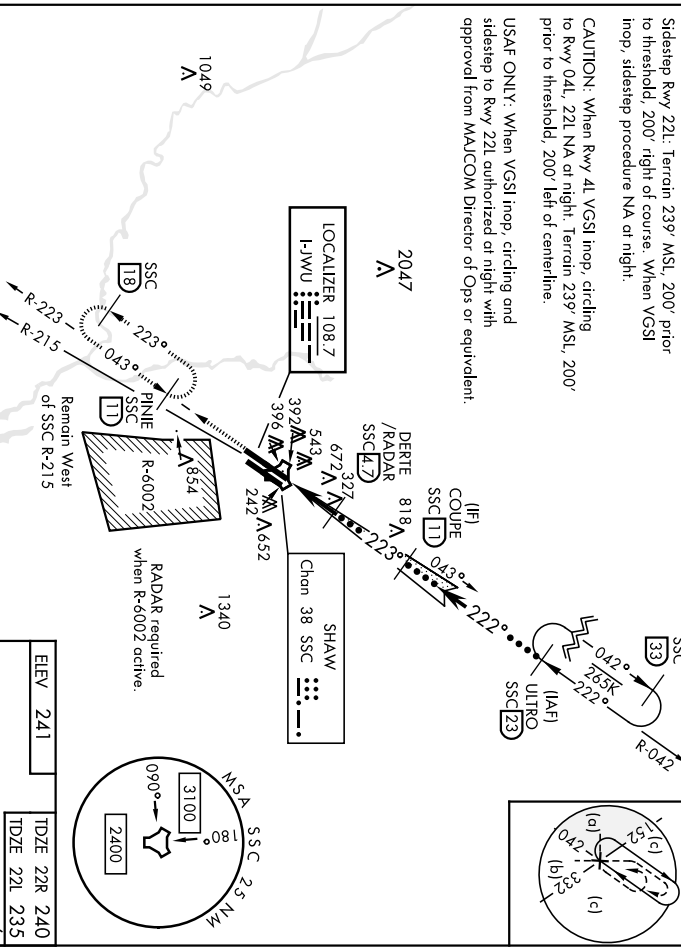
GND CON  
**126.1 275.8**

CINC DEL  
**126.1 275.8**

Sidestep Rwy 22L: Terrain 239' MSL, 200' prior to threshold, 200' right of course. When VGS1 Inop, sidestep procedure NA of night.

CAUTION: When Rwy 4L VGS1 Inop, circling to Rwy 04L, 22L NA or night. Terrain 239' MSL, 200' prior to threshold, 200' left of centerline.

USAF ONLY: When VGS1 Inop, circling and sidestep to Rwy 22L authorized at night with approval from MAJCOM Director of Ops or equivalent.



EMERG SAFE ALT 100 NM 3800

2000 SSC [11]	PINE SSC [11]	TACAN [17]	SUVEE [D]
2000 SSC [11]	COUPE [D]	DERTE /RADAR [47]	LOC Only
2000 SSC [11]	UTRO R-042 [23]	11,000	

5 NM	3.7 NM	6 NM	6 NM
C	D	E	
SSLS 22R *	440/24	200	(200-½)
S-LOC 22R **	660/40	420	(500-¾)
SIDESTEP **	660-1¼	425	(500-1¼)
ZLI	1000-2¼	1000-2½	1000-2¾
[C] CIRCLING	759 (800-2¼)	759 (800-2½)	759 (800-2¾)

SUMNER, SOUTH CAROLINA

33°58'N-80°28'W

SHAW AFB (KSSC)



# HILLS or LOC Z RWY 22R

LOC/SSC <b>110.1</b>	APCH CRS <b>043°</b>	Rwy Idg TDZE Apt/Elev	4L <b>10 014</b> 240 241	4R <b>8014</b> 236 241
-------------------------	-------------------------	-----------------------------	-----------------------------------	---------------------------------

JAL-409 [USAF]

SHAW AFB (KSSC)

RAIDAR or DME Required:

▲ \* When AIS Inop, increase vis to 1 1/2 miles.



MISSED APPROACH: Climbing to 2000, intercept SSC TACAN R-042 to GABLE and hold.

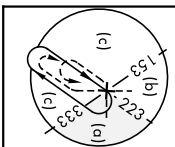
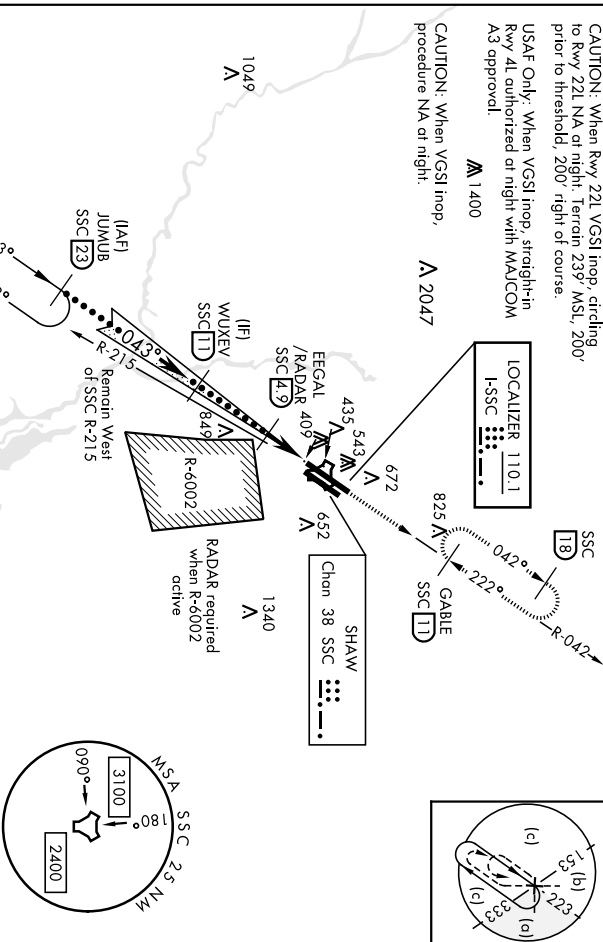
AITS *	SHAW APP CON	SHAW TOWER *	GND CON	CINCL DEL
<b>132.125 270.1</b>	<b>125.4 318.1</b>	<b>126.65 254.25</b>	<b>126.1 275.8</b>	<b>126.1 275.8</b>

CAUTION: When Rwy 22L VGSi Inop, circling to Rwy 22L NA at night. Terrain 239' MSL, 200' prior to threshold, 200' right of course.

USAF Only: When VGSi Inop, straight-in Rwy 4L authorized at night with MAJCOM A3 approval.

▲ 1400

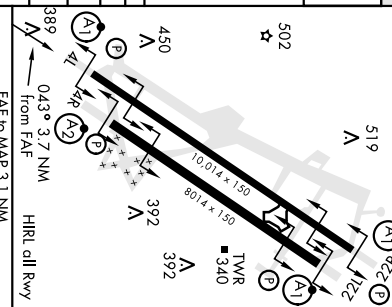
CAUTION: When VGSi Inop, procedure NA at night.



EMERG SAFE ALT 100 NM 3800

JUWUB R-223 23	VGSi and ILS glidepath not coincident (VGSi angle 2.80/TCH 37)	2000 SSC R-042	GABLE SSC 1D
11,000 043°	WUVEV 1D	EGGAL /RADAR 49	TACAN 1B
2000	1400	CAVEG 1B	
GS 2.80° TCH 49	3.1 NM	0.6	
CATEGORY	C	D	E
S-ILS 4L *	490/50	250	(300-1)
S-LOC 4L *	780/55	540	(600-1)
SIDESTEP *	780-1 3/8	544	(600-1 3/8)
4R	1000-2 1/2	1000-2 1/2	1000-2 3/4
4R	759 (800-2 1/4)	759 (800-2 1/4)	759 (800-2 3/4)

ELEV 241	TDZE 4L 240
	TDZE 4R 236



	Knots				
	120	140	160	180	200
	Mins:Sec				
	1:33	1:20	1:10	1:02	0:56

SUMNER, SOUTH CAROLINA 33°58'N-80°28'W SHAW AFB (KSSC)  
Amdt 1 100CT19

HILLS or LOC Z RWY 4L

# HI-TACAN Z RWY 22R

JAL-409 [USAF]

SHAW AFB (KSSC)

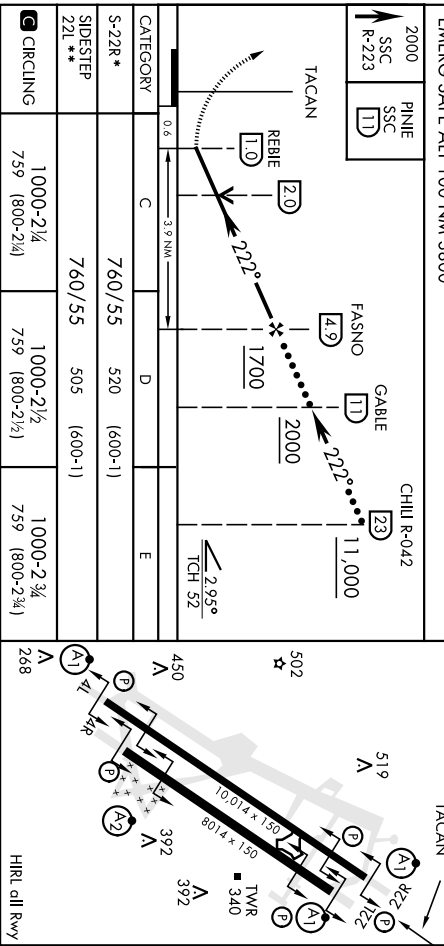
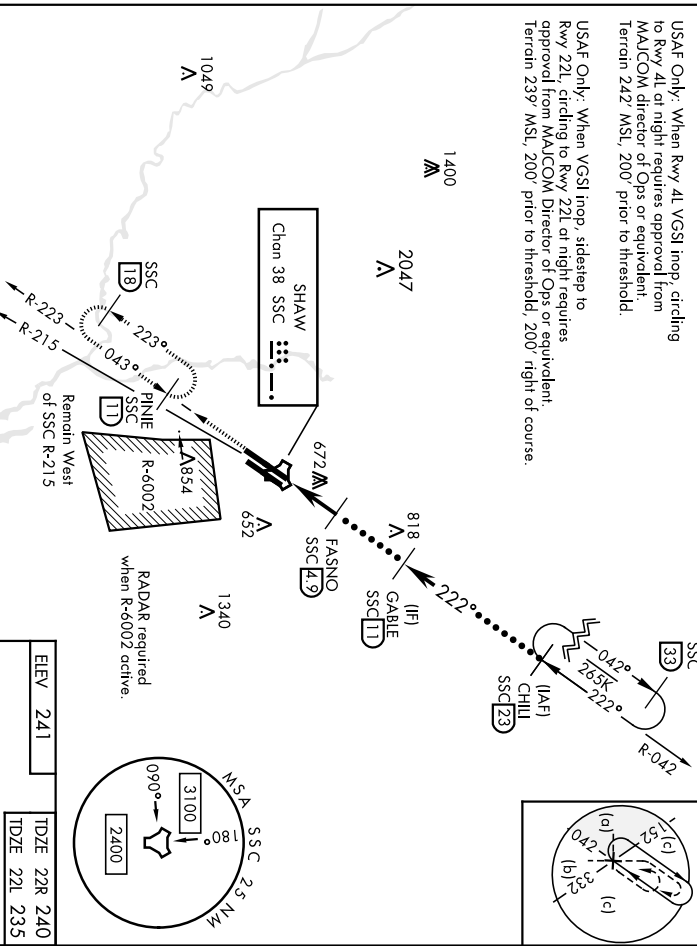
TACAN SSC Chan 38	APCH CRS 222°	Rwy Idg 10,014	22L 8014
		TDZE 240	23S 235
		Arpl Elev 241	241

▲ * When ALS inop, increase vis to 1½ miles. ** When ALS inop, increase vis to 1¾ miles.	A1SF-1 	MISSED APPROACH: Climbing to 2000, intercept SSC TACAN R-223 to PINE and hold.
	A1 	

ATIS * 132.125 270.1	SHAW APP CON 125.4 318.1	SHAW TOWER * 126.65 254.25	GND CON 126.1 275.8	CLNC DEL 126.1 275.8
-------------------------	-----------------------------	-------------------------------	------------------------	-------------------------

USAF Only: When Rwy 4L VGSJ inop, circling to Rwy 4L at night requires approval from MAJCOM director of Ops or equivalent. Terrain 2427 MSL, 200' prior to threshold.

USAF Only: When VGSJ inop, sidestep to Rwy 22L, circling to Rwy 22L at night requires approval from MAJCOM Director of Ops or equivalent. Terrain 2397 MSL, 200' prior to threshold, 200' right of course.



EMERG SAFE ALT 100 NM 3800

2000 PINE SSC (A1D)

2200 FASNO (A49) GABLE (A23) CHILL R-042

TACAN

REBE (A20) 222°

1700

2000

11,000

2.95°

TCH 52

0.6

3.9 NM

CATEGORY	C	D	E
S-22R *	760/55	520 (600-1)	
SIDESTEP 22L **	760/55	505 (600-1)	
CIRCILING	1000-2 1/4 759 (800-2 1/4)	1000-2 1/2 759 (800-2 1/2)	1000-2 3/4 759 (800-2 3/4)

SUMTER, SOUTH CAROLINA

33°58'N-80°28'W

SHAW AFB (KSSC)

Andl 1 07NOV19

# HI-TACAN Z RWY 22R

# HI-TACAN Z RWY 4L

JAL 409 [USAF]

SHAW AFB (KSSC)

4L	4R
Run/Idg	8014
TDZE	240
Appt Elev	241
	236
	241



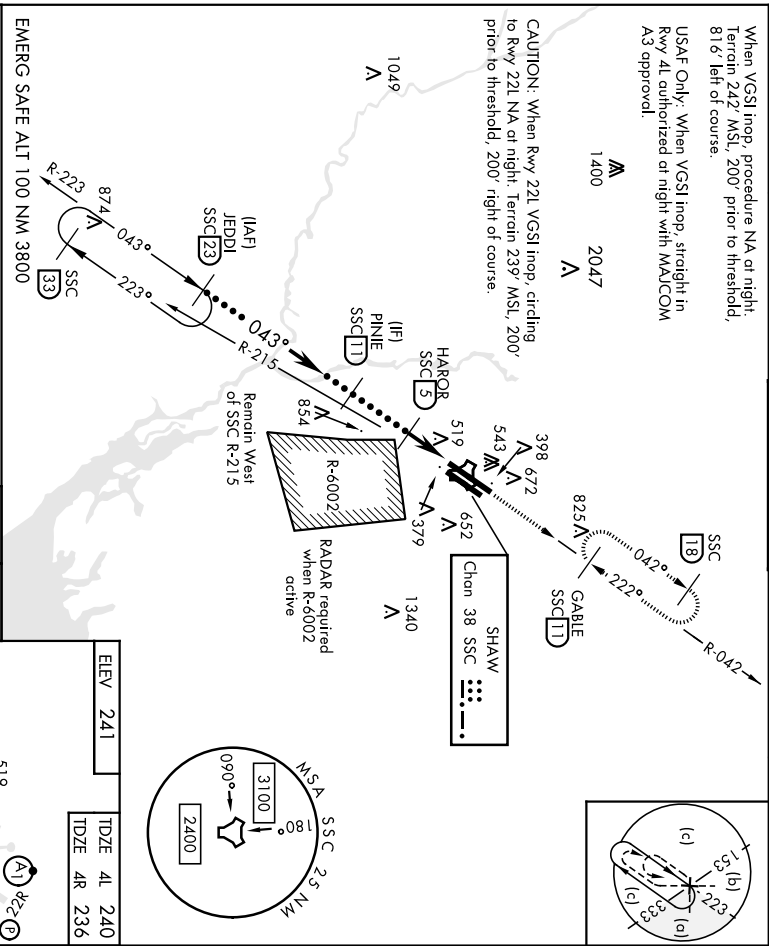
MISSED APPROACH: Climbing to 2000, intercept SSC TACAN R-042 to GABLE and hold.

ATIS *	SHAW APP CON	SHAW TOWER *	GND CON	CLNC DEL
132.125 270.1	125.4 318.1	126.65 254.25	126.1 275.8	126.1 275.8

When VGSJ Inop, procedure NA at night. Terrain 242' MSL, 200' prior to threshold, 816' left of course.

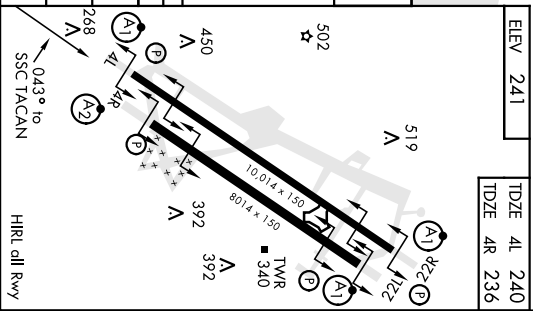
USAF Only: When VGSJ Inop, straight in Rwy 4L authorized at night with MAJCOM A3 approval.

CAUTION: When Rwy 22L VGSJ Inop, circling to Rwy 22L NA at night. Terrain 239' MSL, 200' prior to threshold, 200' right of course.



EMERG SAFE ALT 100 NM 3800

CATEGORY	C	D	E
	800/60	560 (600-1½)	
S-4L *			
SIDESTEP 4R *		800-1¾ 564 (600-1¾)	
CIRCLING	1000-2¼	1000-2½	1000-2¾
	759 (800-2¼)	759 (800-2½)	759 (800-2¾)



ELEV	241
TDZE	4L 240
TDZE	4R 236

SUMNER, SOUTH CAROLINA

SHAW AFB (KSSC)

Amcl 1 100CT19

# HI-TACAN Z RWY 4L

# ILS or LOC Y RWY 22R

AL-409 [USAF]

SHAW AFB (KSSC)

LOC (H)WU <b>108.7</b>	APCH CRS <b>223°</b>	Rwy Idg TDZE Arpl Elev <b>10 014 240 241</b>	22R <b>10 014 240 241</b>	22L <b>8014 235 241</b>
AITS *		SHAW APP CON	<b>125.4 318.1</b>	SHAW TOWER *
			<b>126.65 254.25</b>	GND CON
			<b>126.1 275.8</b>	CINC DEL

▼\* When ALS inop, increase RVR to 40 and vis to ¾ mile.  
\*\* When ALS inop, increase CAT AB RVR to 55 and vis to 1 mile, CAT CDE vis to 1 ¼ miles.

MISSED APPROACH: Climbing to 2000, intercept SSC TACAN R-223 to PINE and hold.

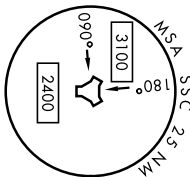
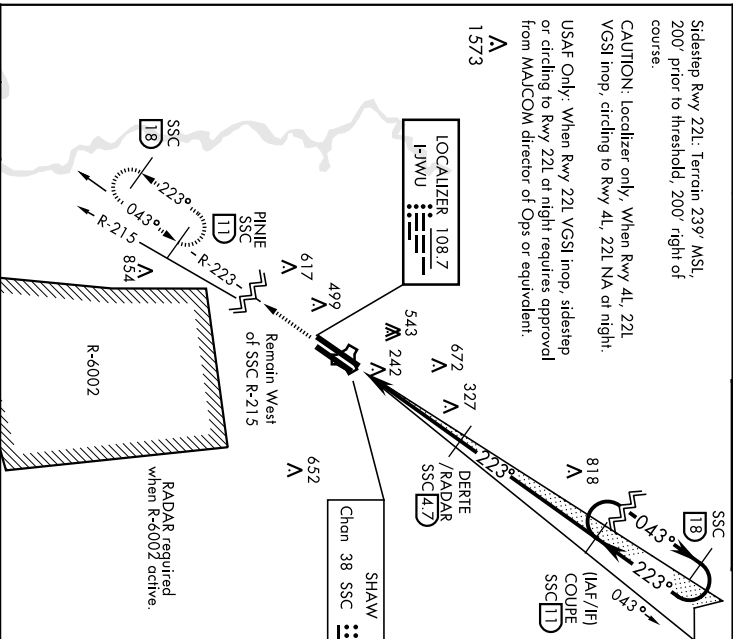


Sidestep Rwy 22L: Terrain 239' MSL, 200' prior to threshold, 200' right of course.

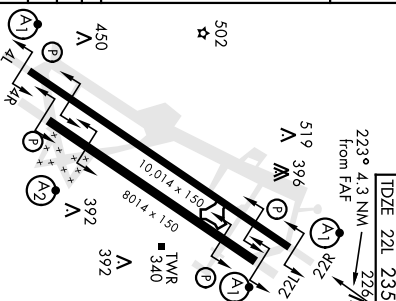
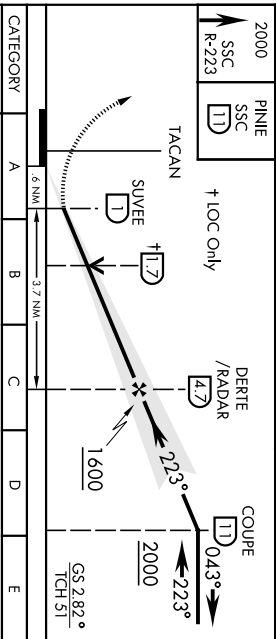
CAUTION: localizer only, When Rwy 4L, 22L VGSII inop, circling to Rwy 4L, 22L NA at night.

USAF Only: When Rwy 22L VGSII inop, sidestep or circling to Rwy 22L at night requires approval from MAJCOM director of Ops or equivalent.

A 1573



ELEV	241
EMERG SAFE ALT	100 NM 3800
TDZE 22R	240
TDZE 22L	235



CATEGORY	A	B	C	D	E
S-ILS 22R *	440/24 200 (1200-½)				
S-LOC 22R **	660/24 420 (500-½)	660/40 420 (500-¾)	660/40 420 (500-¾)	660-1¼ 425 (500-1¼)	660-1 425 (500-1¼)
SIDESTEP **	660-1 425 (500-1)	660-1 425 (500-1)	660-1 425 (500-1)	660-1 425 (500-1)	660-1 425 (500-1)
CIRCLING	820-1 880-1 579 (600-1) 639 (700-1)	820-1 880-1 759 (800-2¼) 759 (800-2¼) 759 (800-2¼)	1000-2¼ 1000-2¼ 1000-2¼	1000-2¼ 1000-2¼ 1000-2¼	1000-2¼ 1000-2¼ 1000-2¼

FAF to MAP 3.7 NM					
Knots	60	90	120	150	180
Mins:Sec	3:42	2:28	1:51	1:29	1:14

HIRL all Rwy

# ILS or LOC Y RWY 22R

SHAW AFB (KSSC)

LOC/SSC	APCH CRS	Rwy Idg	4L	AR
110.1	043°	TDZE	240	236
		Appl Elev	241	241

# IIS or LOC Y RWY 4L

AL-409 [USAF]

SHAW AFB (KSSC)

RADAR or DME Required:

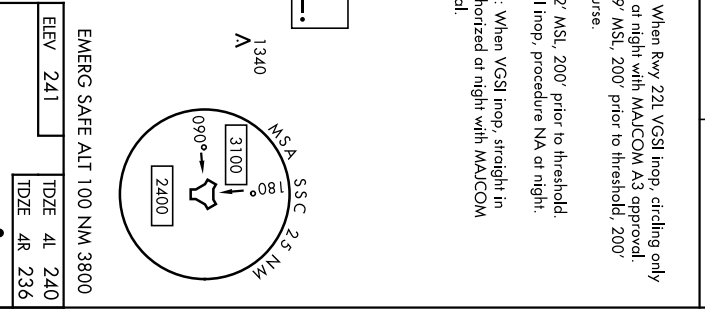
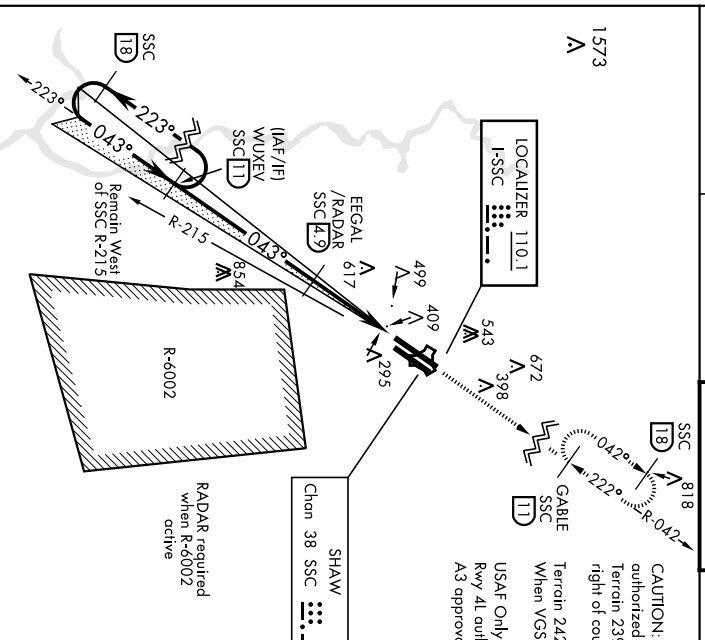
▼ When ALS inop, increase CAT AB RVR to 55 and vis to 1 mile. CAT CDE vis to 1 1/2 miles.

ALSF-1  
A1

MISSED APPROACH: Climbing to 2000, intercept SSC TACAN R-042 to GABLE and hold.

ATIS *	SHAW APP CON	125.4	318.1	SHAW TOWER *	126.65	254.25	GND CON	126.1	275.8	CINCL DEL	126.1	275.8
--------	--------------	-------	-------	--------------	--------	--------	---------	-------	-------	-----------	-------	-------

1573  
A



WUXEV [1D]	EGAL [E9]	VGSi and ILS glide slope /RADAR (VGSi angle 2.80/TCH 37)	2000 SSC R-042	GABLE [1D]	
← 223°	← 043°	← 1400	← 1409	← 2000	
← 043°	← 043°	← 1400	← 1409	← 2000	
← 2000	← 1400	← 1409	← 1409	← 2000	
GS 2.80° TCH 49	← 3.1 NM	← 0.6	← 0.6	← 0.6	
CATEGORY	A	B	C	D	E
SHLS 4L	490/50		250	(300-1)	
S-LOC 4L *	780/50	540 (600-1)	780/55	540 (600-1)	
SIDESTEP 4R *	780/50	544 (600-3/4)	780-1 3/8	544 (600-1 1/2)	
CIRCLING	820-1	880-1	1000-2 1/4	1000-2 1/2	1000-2 3/4
	579 (600-1)	639 (700-1)	759 (800-2 1/4)	759 (800-2 1/2)	759 (800-2 3/4)

Knots	60	90	120	150	180
	3:06	2:04	1:33	1:14	1:02
Mins:Sec	3:06	2:04	1:33	1:14	1:02

SUMTER, SOUTH CAROLINA 33° 58' N-80° 28' W SHAW AFB (KSSC) Andlt 1 100CT19

# IIS or LOC Y RWY 4L

TACAN SSC	APCH CRS	Rwy Idg	22R	22L
Chan 38	222°	TDZE	240	235
		Arpl Elev	241	241

AL-409 [USAF]

SHAW AFB (KSSC)

# TACAN Y RWY 22R

20254

* When ALS Inop, increase CAT AB RVR to 55, vis to 1 mile. ** When ALS Inop, increase CAT AB RVR to 55, vis to 1 mile. CAT CDE vis to 1 1/2 miles. CAT CDE vis to 1 1/2 miles.	ALSF-1	MISSED APPROACH: Climbing to 2000, intercept SFC TACAN R-223 to PINE and hold.
	(A1)	

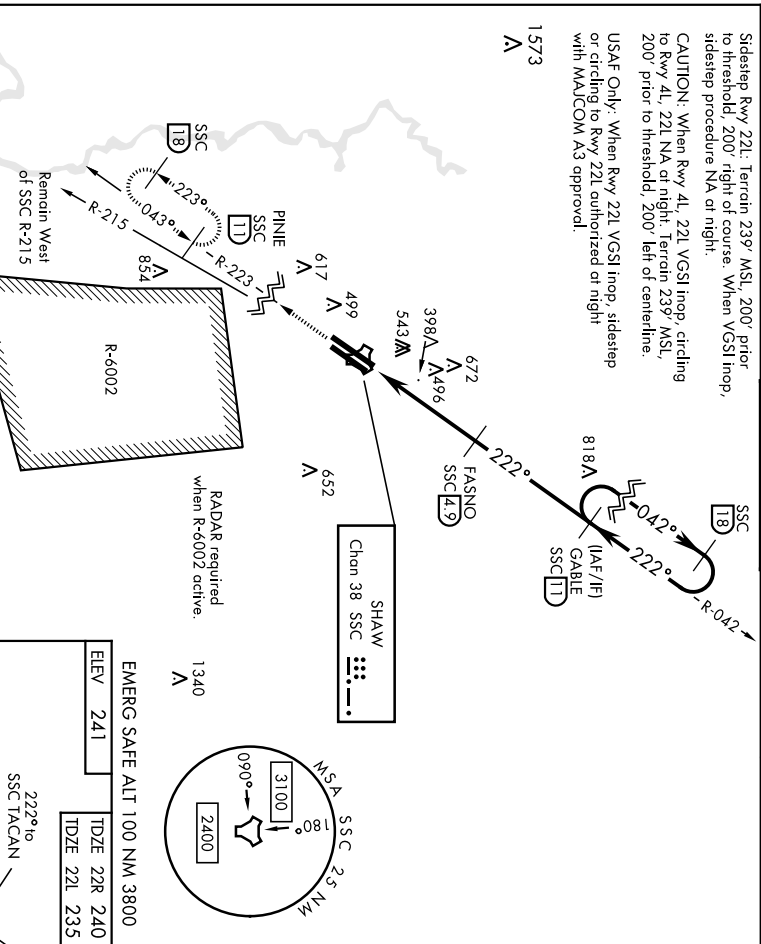
ATIS *	SHAW APP CON	SHAW TOWER *	GND CON	CLNC DEL
132-125 270-1	125.4 318.1	126.65 254.25	126.1 275.8	126.1 275.8

Sidestep Rwy 22L: Terrain 239' MSL, 200' prior to threshold, 200' right of course. When VGS1 Inop, sidestep procedure NA or night.

CAUTION: When Rwy 4L, 22L VGS1 Inop, circling to Rwy 4L, 22L NA at night. Terrain 239' MSL, 200' prior to threshold, 200' left of centerline.

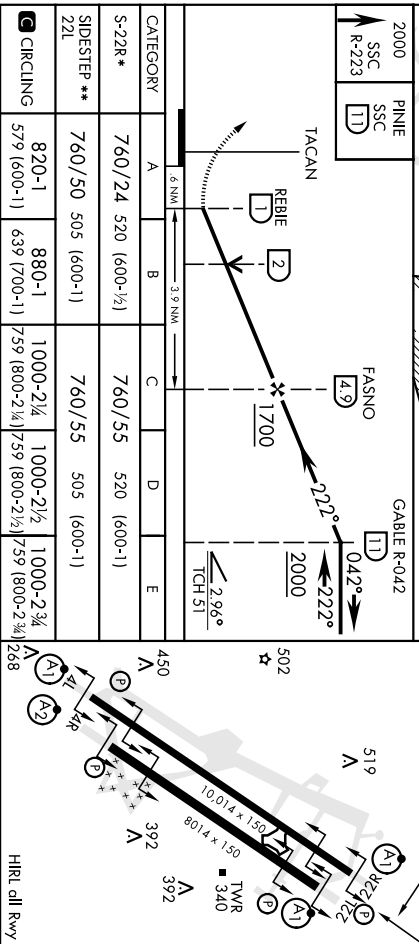
USAF Only: When Rwy 22L VGS1 Inop, sidestep or circling to Rwy 22L authorized at night with MAJCOM A3 approval.

1573  
A



EMERG SAFE ALT 100 NM NM 3800

ELEV	241
TDZE 22R	240
TDZE 22L	235



SUMTER, SOUTH CAROLINA 33° 58' N-80° 28' W  
SHAW AFB (KSSC)  
HIRL oil Rwy  
TACAN Y RWY 22R  
Amhd 1 07NOV19

# TACAN Y RWY 4L

AL-409 [USAF]

SHAW AFB (KSSC)

TACAN SSC Chen <b>38</b>	APCH CRS <b>043°</b>	Rwy Idg TDZE Appt Elev	<b>4L</b> <b>240</b> <b>241</b>	<b>4R</b> <b>8014</b> <b>236</b> <b>241</b>
-----------------------------	-------------------------	------------------------------	---------------------------------------	--

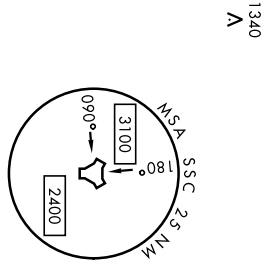
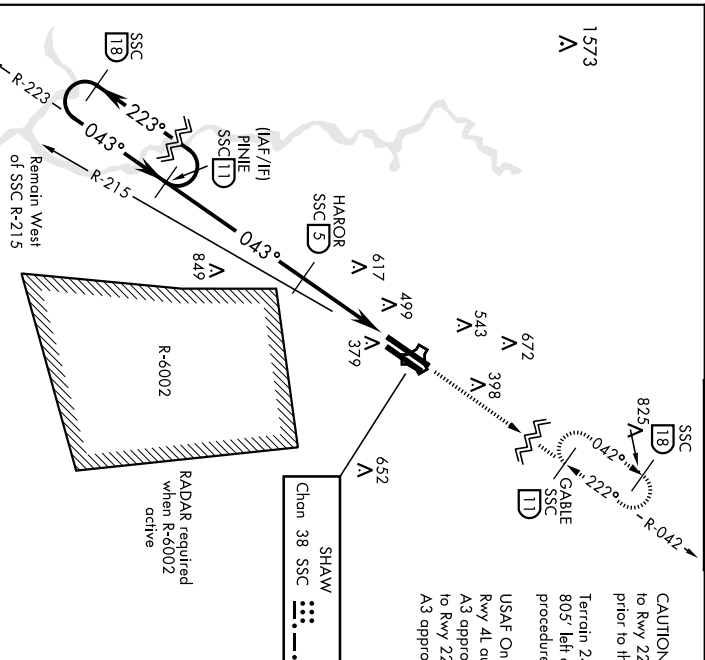
ALSF-1  


MISSED APPROACH: Climbing to 2000, intercept SSC TACAN R-042 to GABLE and hold.

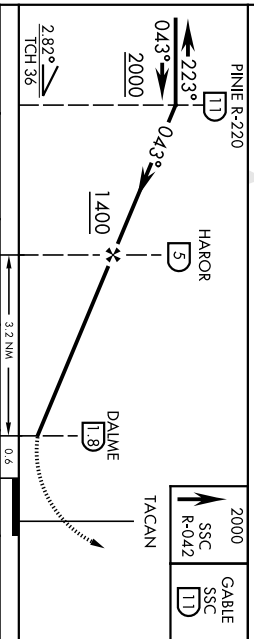
ATIS * <b>132-125 270-1</b>	SHAW APP CON <b>125.4 318.1</b>	SHAW TOWER * <b>126.65 254.25</b>	GND CON <b>126.1 275.8</b>	CLNC DEL <b>126.1 275.8</b>
--------------------------------	------------------------------------	--------------------------------------	-------------------------------	--------------------------------

**CAUTION:** When Rwy 22L VGS1 inop, circling to Rwy 22L NA or night: Terrain 236' MSL, 200' prior to threshold, 105' right of centerline.  
 Terrain 242' MSL, 200' from threshold, 805' left of course. When VGS1 inop, procedure NA at night.

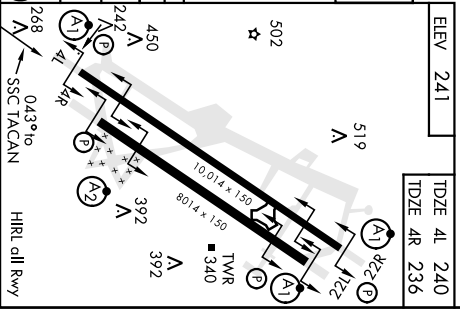
**USAF Only:** When VGS1 inop, straight in Rwy 4L authorized at night with MALCOM A3 approval. When Rwy 22L VGS1 inop, circling to Rwy 22L authorized at night with MALCOM A3 approval.



EMERG SAFE ALT 100 NM 3800	PINIE R-220	HAROR	2000 SSC R-042	GABLE SSC 11D
----------------------------	-------------	-------	----------------	---------------



CATEGORY	A	B	C	D	E
S-4L *	800/50	560 (600-1)	800/60	560 (600-1½)	
SIDESTEP * 4R	800/50	564 (600-1)	800-1¾	564 (600-1¾)	
CIRCLING	820-1 579 (600-1)	880-1 639 (700-1)	1000-2¼ 759 (800-2¼)	1000-2½ 759 (800-2½)	1000-2¾ 759 (800-2¾)



SUMTER, SOUTH CAROLINA  
 Amnd 1 07NOV19  
 33°58'N-80°28'W  
 SHAW AFB (KSSC)  
**TACAN Y RWY 4L**