

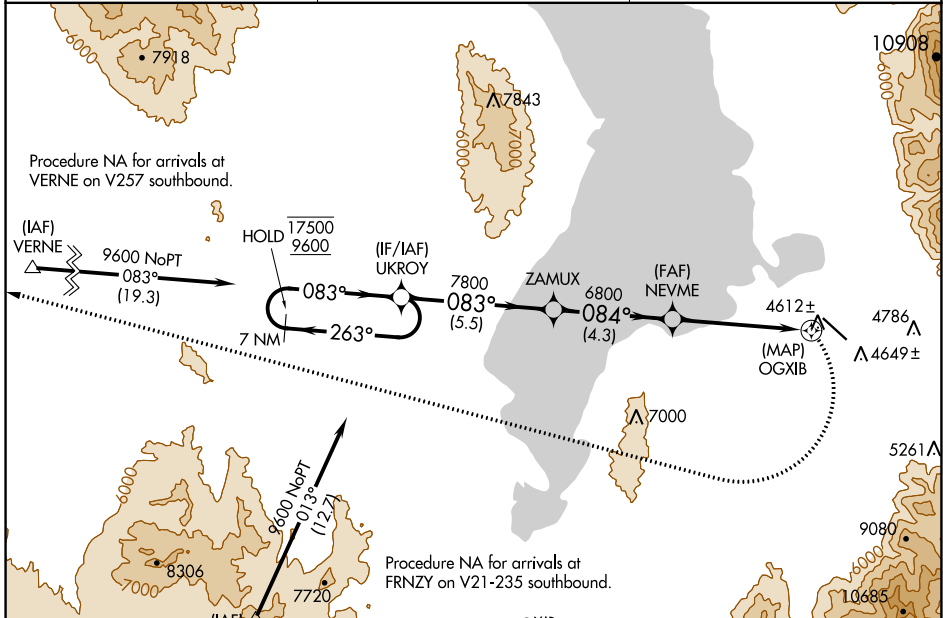
APP CRS 084°	Rwy Idg TDZE Apt Elev 4530	N/A N/A 4530
------------------------	--	---

RNAV (GPS)-A

SPANISH FORK MUNI/WOODHOUSE FLD (SPK)

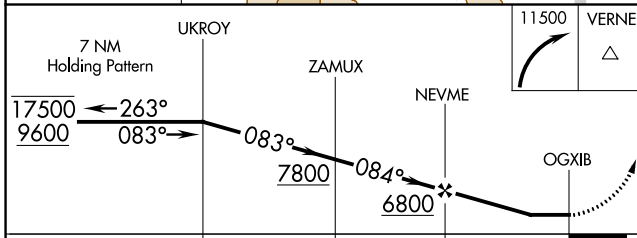
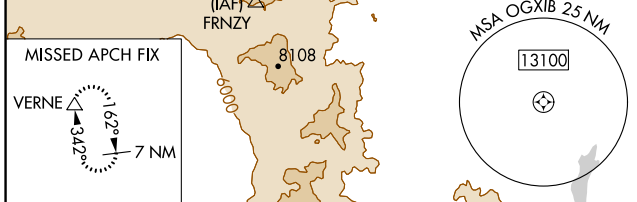
RNP APCH-GPS.		MISSED APPROACH: (Do not exceed 185K until turn completion) Climbing right turn to 11500 direct VERNE and hold.
NA -21°C	When local altimeter setting not received, use Provo altimeter setting and increase all MDAs 20 feet.	

AWOS-3PT 119.275	SALT LAKE CITY APP CON 118.85 233.7	CTAF 122.9
----------------------------	---	----------------------

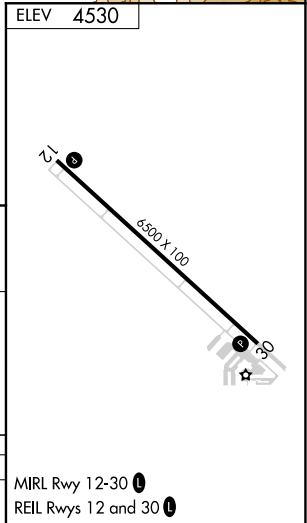


SW-4, 22 FEB 2024 to 21 MAR 2024

SW-4, 22 FEB 2024 to 21 MAR 2024



CATEGORY	A	B	C	D
CIRCLING	6200-1¼ 1670 (1700-1¼)	6200-1½ 1670 (1700-1½)	6200-3 1670 (1700-3)	



RNAV (GPS)-A

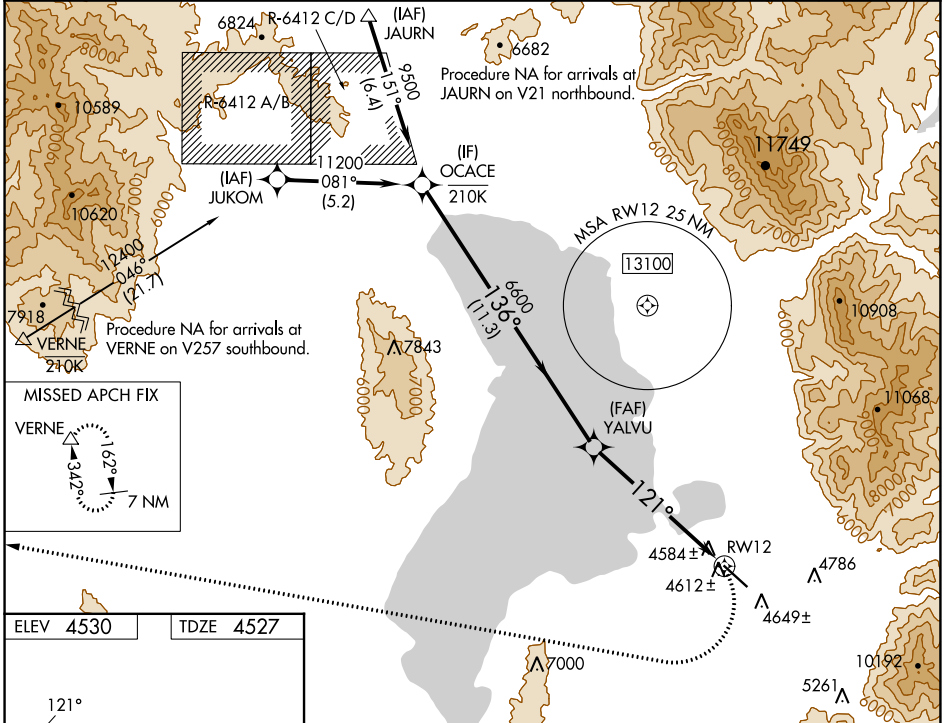
WAAS CH 78042 W12A	APP CRS 121°	Rwy Idg TDZE Apt Elev	6500 4527 4530
---------------------------------	------------------------	-----------------------------	---

RNAV (GPS) Y RWY 12

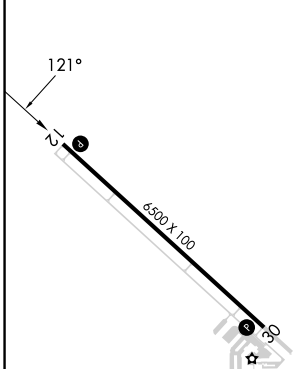
SPANISH FORK MUNI/WOODHOUSE FLD (SPK)

RNP APCH-GPS.	MISSED APPROACH: (Do not exceed 185K until turn completion) Climbing right turn to 11500 direct VERNE and hold.
<p>▼ Rwy 12 helicopter visibility reduction below 3/4 SM NA.</p> <p>▲ NA When local altimeter setting not received, use Provo altimeter setting and increase all MDAs 20 feet.</p> <p>☁ -21°C</p>	

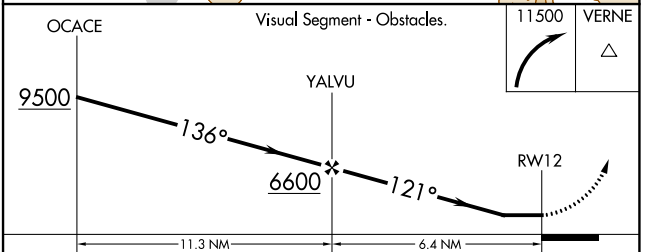
AWOS-3PT 119.275	SALT LAKE CITY APP CON 118.85 233.7	CTAF 122.9
----------------------------	---	----------------------



ELEV 4530	TDZE 4527
-----------	-----------



MIRL Rwy 12-30	REIL Rwy 12 and 30
----------------	--------------------



CATEGORY	A	B	C	D
LP MDA	6040-1¼ 1513 (1600-1¼)	6040-1½ 1513 (1600-1½)	6040-3	1513 (1600-3)
LNAV MDA	6160-1¼ 1633 (1700-1¼)	6160-1½ 1633 (1700-1½)	6160-3	1633 (1700-3)
CIRCLING	6160-1¼ 1630 (1700-1¼)	6160-1½ 1630 (1700-1½)	6160-3	1630 (1700-3)

SW-4, 22 FEB 2024 to 21 MAR 2024

SW-4, 22 FEB 2024 to 21 MAR 2024

WAAS CH 82342 W12B	APP CRS 121°	Rwy Idg TDZE 4527 Apt Elev 4530
--	------------------------	---

RNAV (GPS) Z RWY 12

SPANISH FORK MUNI/WOODHOUSE FLD (SPK)

RNP APCH - GPS.

⚠ Rwy 12 helicopter visibility reduction below 3/4 SM NA. When local altimeter setting not received, use Provo altimeter setting and increase all MDAs 20 feet.

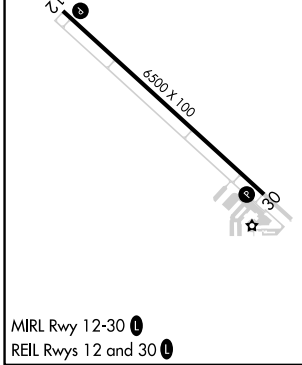
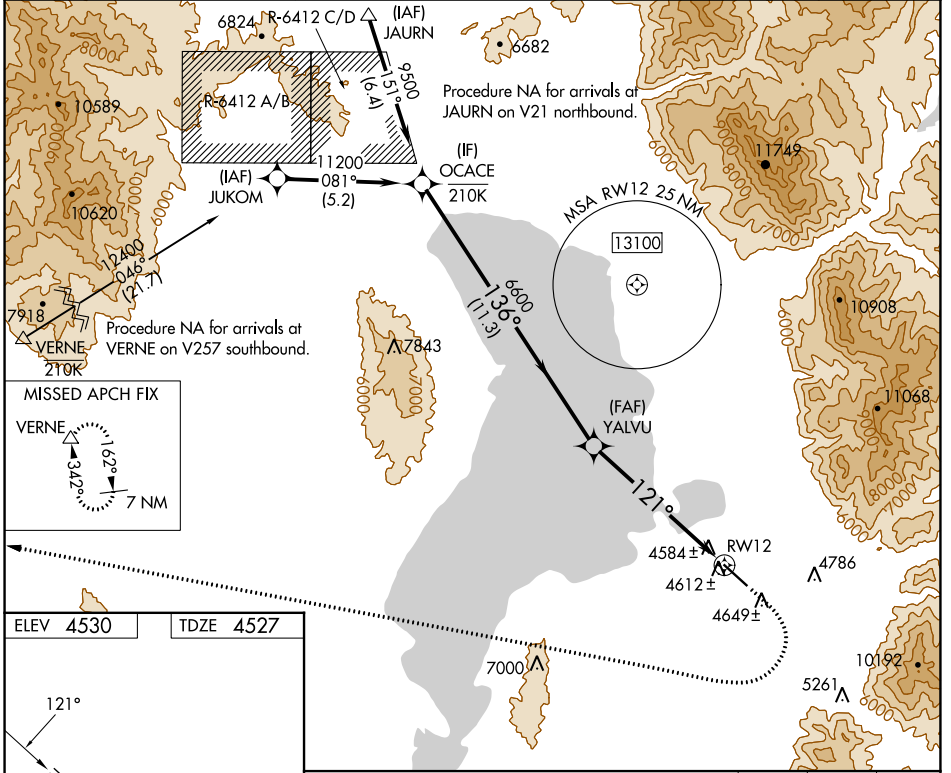
⚠ NA

⚠ -21°C

MISSED APPROACH: (Do not exceed 185K until VERNE) Climb to 5000 then climbing right turn to 11500 direct VERNE and hold.

*Missed approach requires minimum climb of 380 feet per NM to 7600; if unable to meet climb gradient, see RNAV (GPS) Y RWY 12.

AWOS-3PT 119.275	SALT LAKE CITY APP CON 118.85 233.7	CTAF 122.9
----------------------------	---	----------------------



OCACE	Visual Segment - Obstacles.			5000	11500	VERNE
9500	YALVU	RWY 12		↑	↷	△
	136°	6600	121°			
	11.3 NM		6.4 NM			
CATEGORY	A	B	C	D		
LP MDA*	4880-1		353 (400-1)			
LNAV MDA*	4900-1		373 (400-1)			

SW-4, 22 FEB 2024 to 21 MAR 2024

SW-4, 22 FEB 2024 to 21 MAR 2024