

WAAS CH <b>70621</b> <b>W13A</b>	APP CRS <b>124°</b>	Rwy Idg TDZE Apt Elev	<b>6401</b> <b>3884</b> <b>3933</b>
--	------------------------	-----------------------------	---

# RNAV (GPS) RWY 13

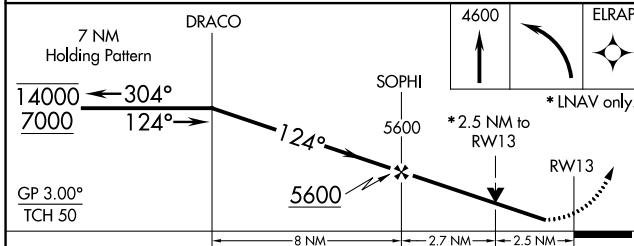
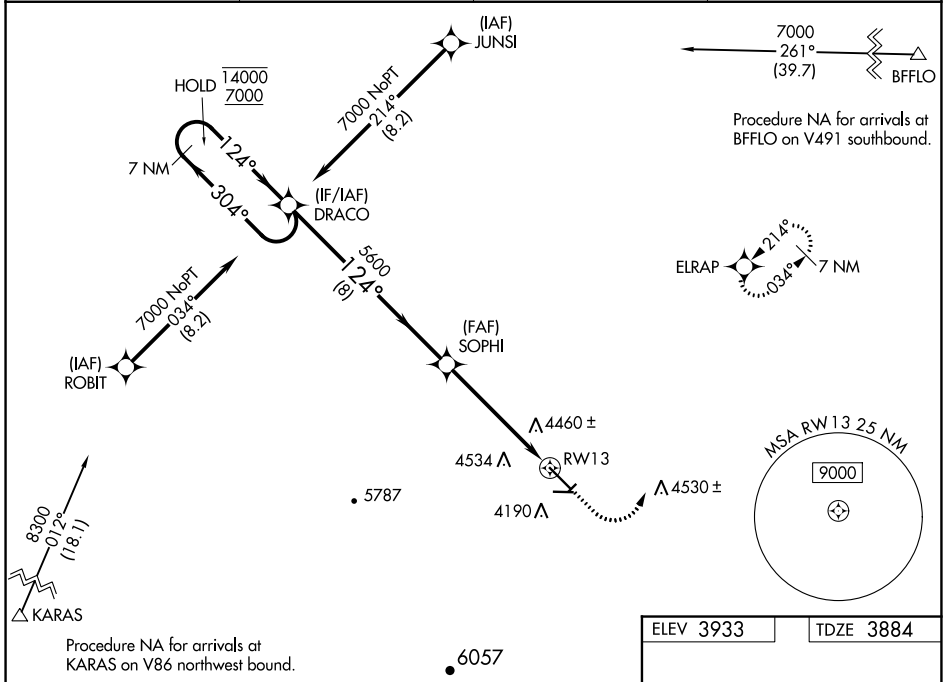
BLACK HILLS-CLYDE ICE FIELD (SPF)

RNP APCH.

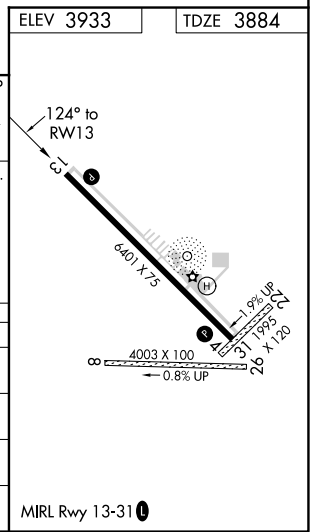
**▽** Circling NA to Rwy's 4, 8, 22 and 26. Rwy 13 helicopter visibility reduction below 3/4 SM NA. For uncompensated Baro-VNAV systems, LNAV/VNAV NA below -22°C or above 54°C.

**⚠** MISSED APPROACH: Climb to 4600 then climbing left turn to ELRAP and hold, continue climb-in-hold to 7000.

AWOS-3 <b>118.325</b>	ELLSWORTH APP CON* <b>119.5 259.1</b>	GCO <b>121.725</b>	UNICOM <b>122.7 (CTAF)</b> <b>📻</b>
--------------------------	--	-----------------------	--



CATEGORY	A	B	C	D
LPV DA	4219-1 1/8	335 (300-1 1/8)		NA
LNAV/VNAV DA	4852-4	968 (1000-4)		NA
LNAV MDA	4720-1 836 (800-1)	4720-1 1/4 836 (800-1 1/4)	4720-2 1/2 836 (800-2 1/2)	NA
<b>📻</b> CIRCLING	4760-1 1/4 827 (900-1 1/4)	4920-1 1/2 987 (1000-1 1/2)	5540-3 1607 (1700-3)	NA



NC-1, 22 APR 2021 to 20 MAY 2021

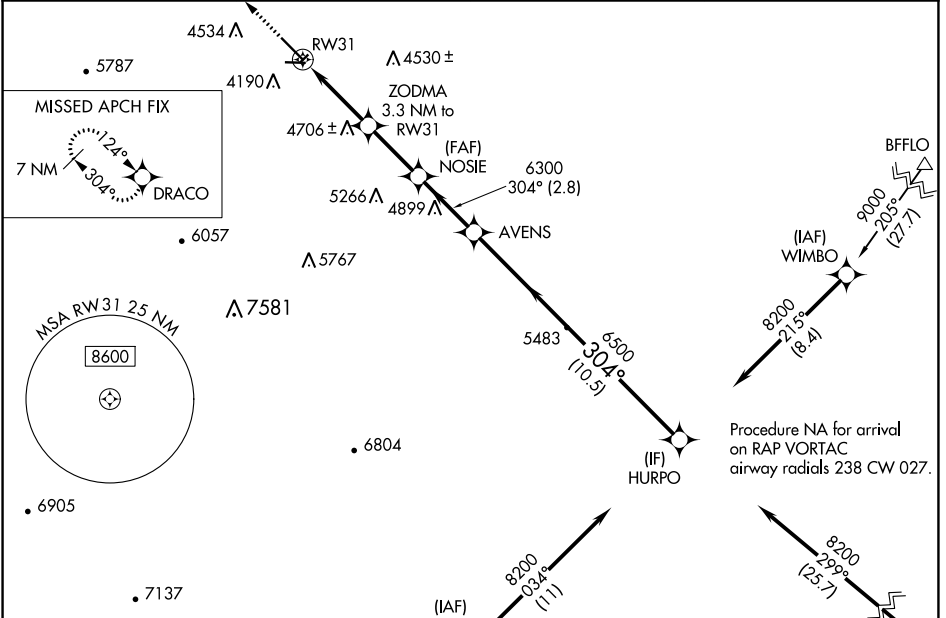
NC-1, 22 APR 2021 to 20 MAY 2021

WAAS CH <b>77821</b> <b>W31A</b>	APP CRS <b>304°</b>	Rwy Idg TDZE Apt Elev	<b>6401</b> <b>3895</b> <b>3933</b>
--	------------------------	-----------------------------	---

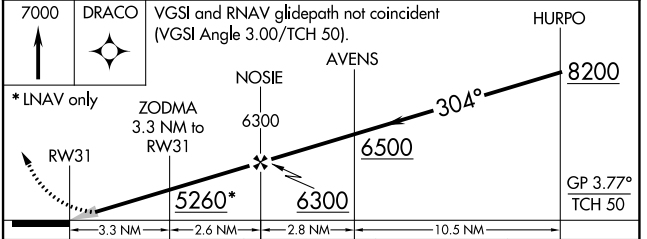
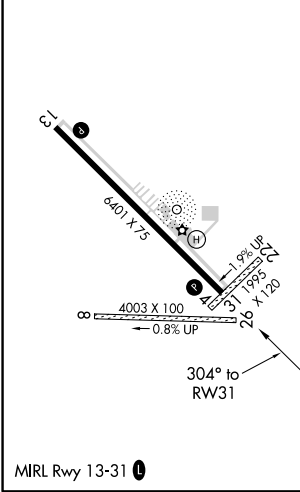
# RNAV (GPS) RWY 31

BLACK HILLS-CLYDE ICE FIELD (SPF)

RNP APCH.		MISSED APPROACH: Climb to 7000 direct DRACO and hold.	
<p>Circling NA to Rws 4, 8, 22 and 26.</p>			
AWOS-3 <b>118.325</b>	ELLSWORTH APP CON <b>119.5 259.1</b>	GCO <b>121.725</b>	UNICOM <b>122.7 (CTAF) 0</b>



ELEV 3933	TDZE 3895
-----------	-----------



CATEGORY	A	B	C	D	
LPV DA	4281-1½			386 (400-1½)	NA
LNAV MDA	4860-1¼ 965 (1000-1½)	4860-1½ 965 (1000-1½)	4860-3 965 (1000-3)	NA	
<b>C</b> CIRCLING	4860-1¼ 927 (1000-1¼)	4860-1½ 927 (1000-1½)	5540-3 1607 (1700-3)	NA	

NC-1, 22 APR 2021 to 20 MAY 2021

NC-1, 22 APR 2021 to 20 MAY 2021