

WAAS CH <b>82303</b> W13A	APP CRS <b>124°</b>	Rwy Idg TDZE Apt Elev	<b>6600</b> <b>4313</b> <b>4313</b>
---------------------------------	------------------------	-----------------------------	---

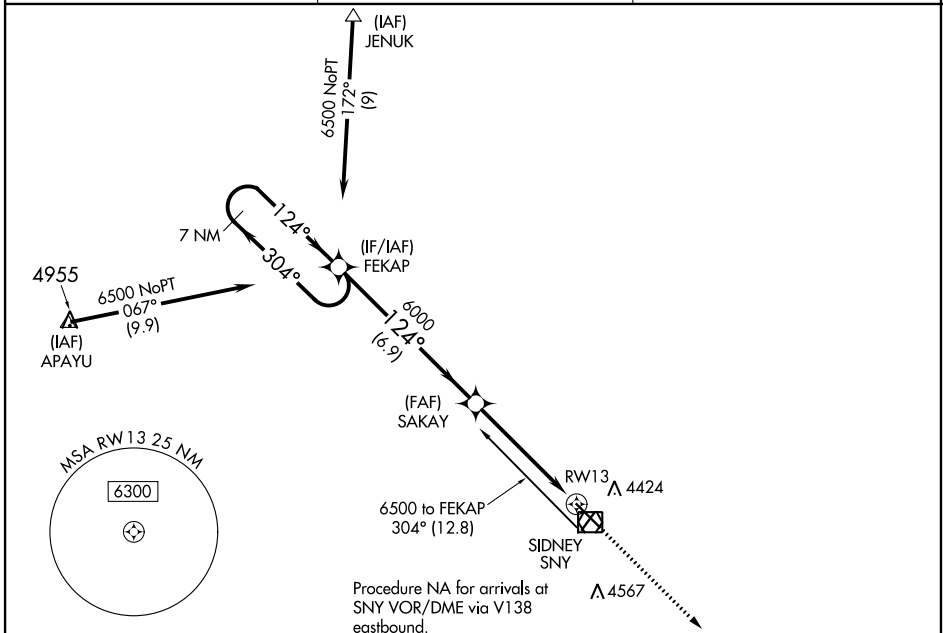
# RNAV (GPS) RWY 13

SIDNEY MUNI/LLOYD W CARR FLD (SNY)

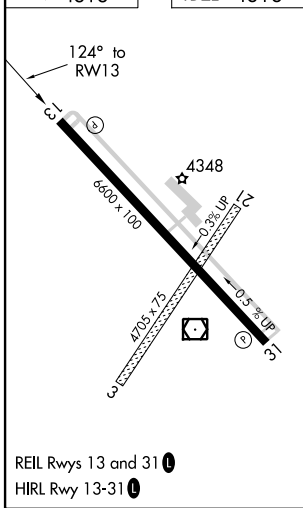
**⚠** DME/DME RNP-0.3 NA. VDP NA when using Kimball altimeter setting. When local altimeter setting not received, use Kimball altimeter setting: increase DA to 4723 feet and visibility 3/4 SM; increase all MDAs 160 feet and visibility Cats C and D 1/2 SM.

MISSED APPROACH: Climb to 6000 direct GIGDE and hold.

ASOS <b>125.775</b>	DENVER CENTER <b>118.475 225.4</b>	UNICOM <b>122.8 (CTAF) 0</b>
------------------------	---------------------------------------	---------------------------------



ELEV 4313	TDZE 4313
-----------	-----------



	7 NM Holding Pattern	FEKAP	SAKAY	6000	GIGDE
	6500	← 304°	→ 124°	→ 124°	→ 124°
	GP 3.00°		6000		
	TCH 44				
		← 6.9 NM	← 3.7 NM	← 1.4 NM	
CATEGORY	A	B	C	D	
LPV DA	4563-3/4 250 (300-3/4)				
LNAV MDA	4800-1	487 (500-1)	4800-1 1/4 487 (500-1 1/4)	4800-1 1/2 487 (500-1 1/2)	
CIRCLING	4800-1	487 (500-1)	4920-1 3/4 607 (700-1 3/4)	4960-2 647 (700-2)	

NC-2, 02 DEC 2021 to 30 DEC 2021

NC-2, 02 DEC 2021 to 30 DEC 2021

APP CRS <b>304°</b>	Rwy Idg <b>6600</b>
	TDZE <b>4290</b>
	Apt Elev <b>4313</b>

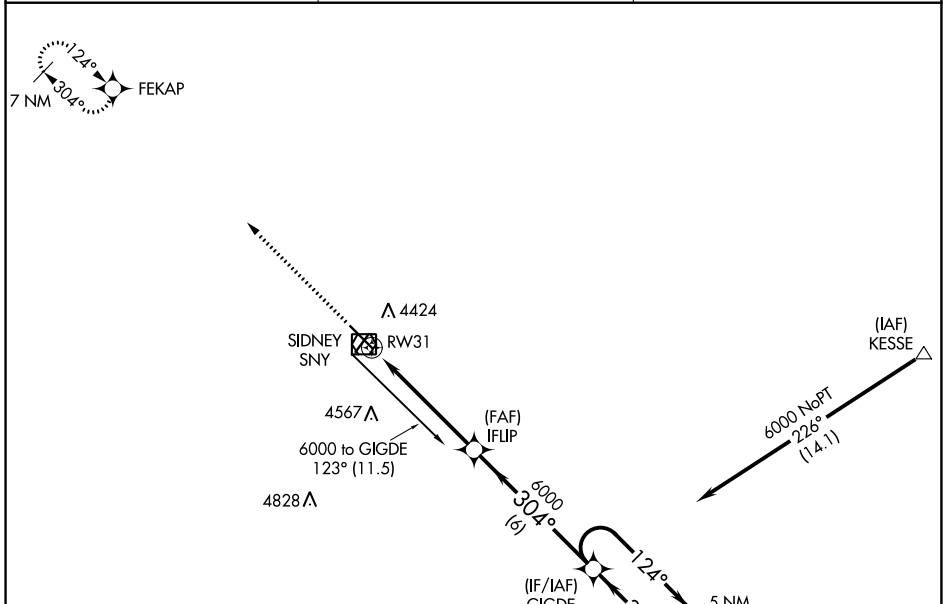
# RNAV (GPS) RWY 31

SIDNEY MUNI/LLOYD W CARR FLD (SNY)

**⚠** DME/DME RNP-0.3 NA. When local altimeter setting not received, use Kimball altimeter setting: increase all MDAs 160 feet and visibility Cats C and D ½ SM.

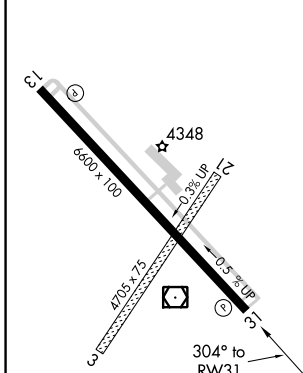
**⚠** MISSED APPROACH: Climb to 6500 direct FEKAP and hold.

ASOS <b>125.775</b>	DENVER CENTER <b>118.475 225.4</b>	UNICOM <b>122.8 (CTAF) 0</b>
------------------------	---------------------------------------	---------------------------------

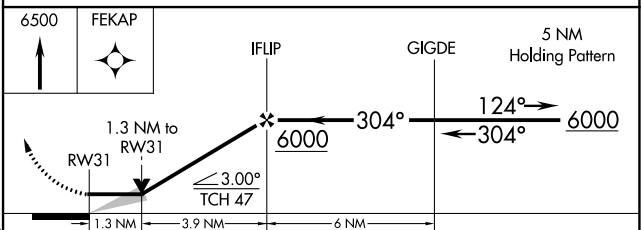
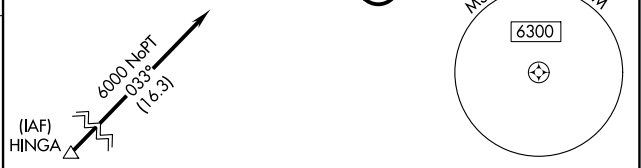


**⚠** 4990 ±

ELEV 4313	TDZE 4290
-----------	-----------



REIL Rwy 13 and 31 **0**  
HIRL Rwy 13-31 **0**



CATEGORY	A	B	C	D
LNAV MDA	4740-1	450 (500-1)	4740-1¼ 450 (500-1¼)	4740-1½ 450 (500-1½)
CIRCLING	4760-1 447 (500-1)	4780-1 467 (500-1)	4920-1¾ 607 (700-1¾)	4960-2 647 (700-2)

NC-2, 02 DEC 2021 to 30 DEC 2021

NC-2, 02 DEC 2021 to 30 DEC 2021

VOR/DME SNY <b>115.9</b> Chan <b>106</b>	APP CRS <b>130°</b>	Rwy Idg <b>6600</b> TDZE <b>4313</b> Apt Elev <b>4313</b>
--	------------------------	---

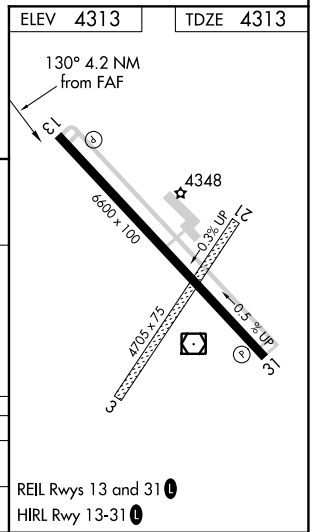
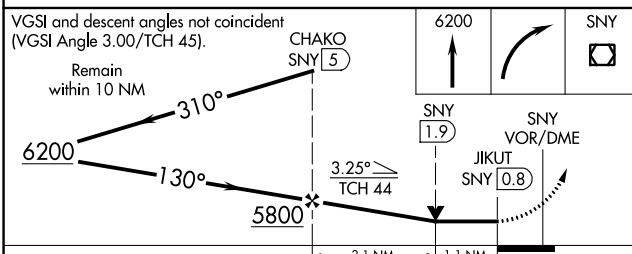
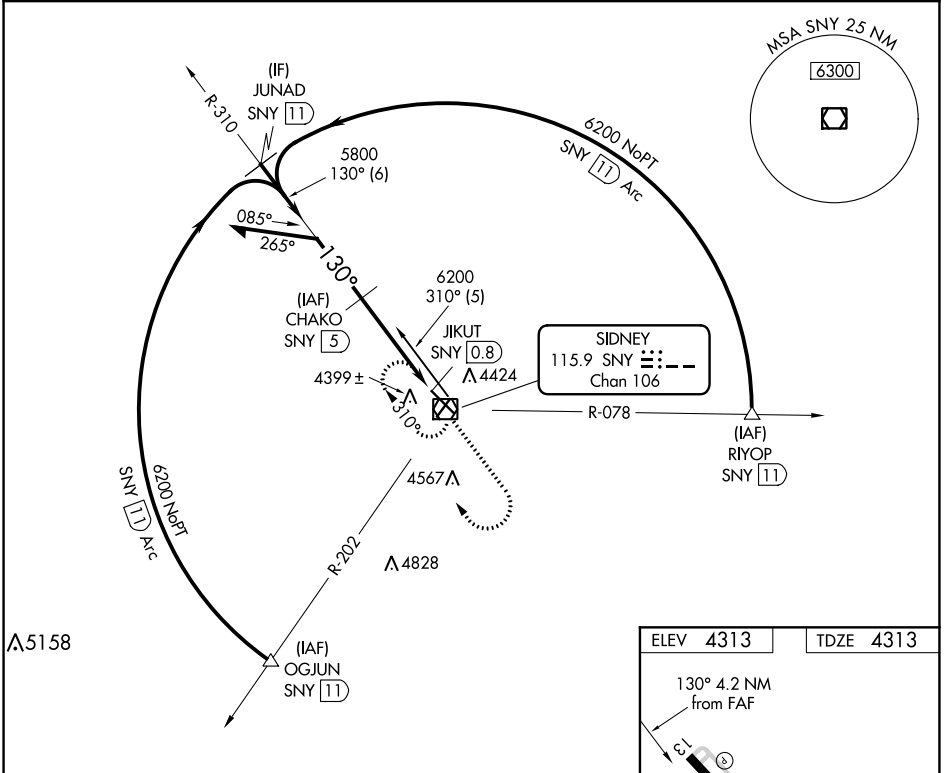
# VOR/DME RWY 13

SIDNEY MUNI/LLOYD W CARR FLD (SNY)

**⚠** VDP NA when using Kimball altimeter setting. When local altimeter setting not received, use Kimball altimeter setting; increase all MDAs 160 feet and visibility Cats C and D ½ SM.

**⚠** MISSED APPROACH: Climb to 6200 then right turn direct SNY VOR/DME and hold.

ASOS <b>125.775</b>	DENVER CENTER <b>118.475 225.4</b>	UNICOM <b>122.8 (CTAF) 0</b>
------------------------	---------------------------------------	---------------------------------



CATEGORY	A	B	C	D
S-13	4700-1	387 (400-1)		4700-1¼ 387 (400-1¼)
CIRCLING	4760-1 447 (500-1)	4780-1 467 (500-1)	4920-1¾ 607 (700-1¾)	4960-2 647 (700-2)

NC-2, 02 DEC 2021 to 30 DEC 2021

NC-2, 02 DEC 2021 to 30 DEC 2021

VOR/DME SNY <b>115.9</b> Chan <b>106</b>	APP CRS <b>293°</b>	Rwy Idg <b>6600</b> TDZE <b>4290</b> Apt Elev <b>4313</b>
--	------------------------	---

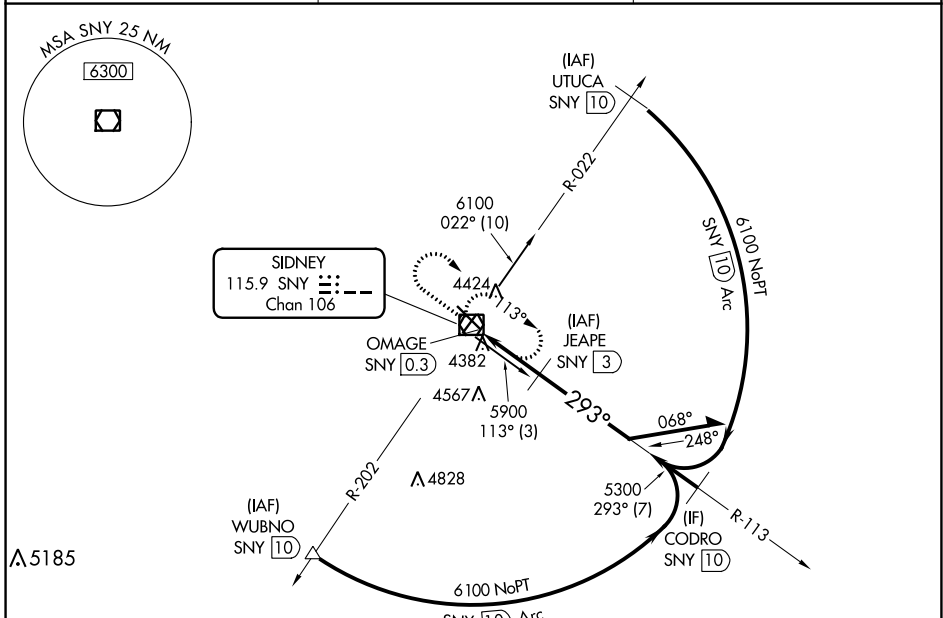
# VOR/DME RWY 31

SIDNEY MUNI/LLOYD W CARR FLD (SNY)

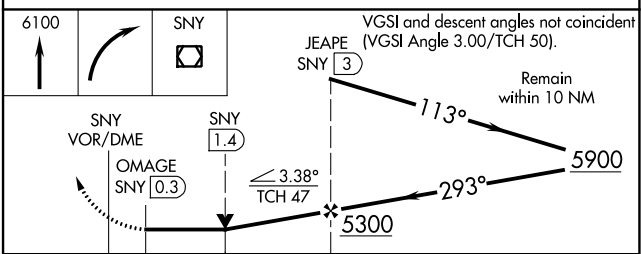
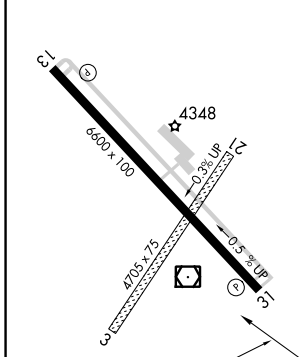
**⚠** When local altimeter setting not received, use Kimball altimeter setting: increase all MDAs 160 feet and visibility Cats C and D ½ SM. VDP NA when using Kimball altimeter setting.

MISSED APPROACH: Climb to 6100 then right turn direct SNY VOR/DME and hold.

ASOS <b>125.775</b>	DENVER CENTER <b>118.475 225.4</b>	UNICOM <b>122.8 (CTAF) 0</b>
------------------------	---------------------------------------	---------------------------------



ELEV 4313	TDZE 4290
-----------	-----------



CATEGORY	A	B	C	D
S-31	4680-1	390 (400-1)		4680-1¼ 390 (400-1¼)
CIRCLING	4760-1 447 (500-1)	4780-1 467 (500-1)	4920-1¾ 607 (700-1¾)	4960-2 647 (700-2)

SIDNEY, NEBRASKA  
Amdt 5C 25MAR21

41°06'N-102°59'W

SIDNEY MUNI/LLOYD W CARR FLD (SNY)  
**VOR/DME RWY 31**

NC-2, 02 DEC 2021 to 30 DEC 2021

NC-2, 02 DEC 2021 to 30 DEC 2021