

HAWWC THREE DEPARTURE (RNAV)  
(HAWWC3.HAWWC) 19Jul18

(HAWWC3.HAWWC) 18200  
HAWWC THREE DEPARTURE (RNAV)

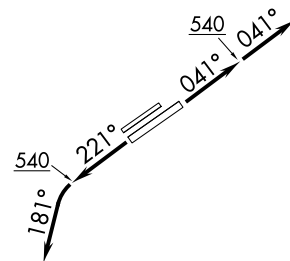
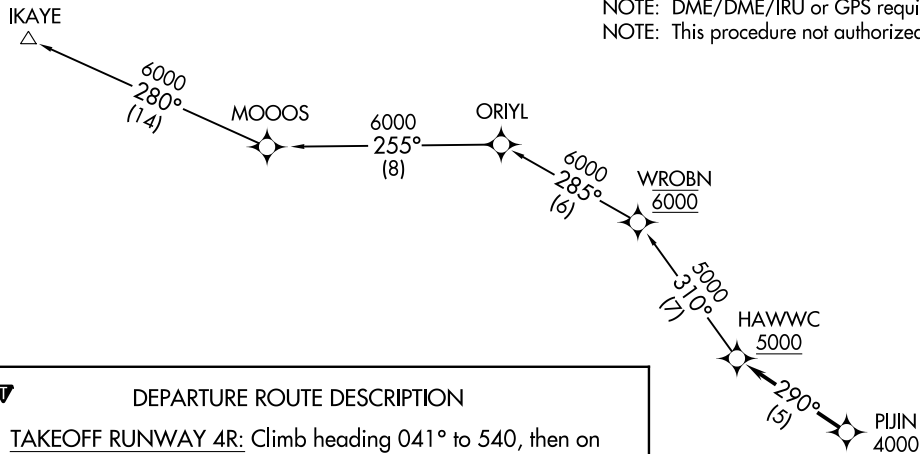
AL-953 (FAA)

LOS ALAMITOS AAF (SLI)  
LOS ALAMITOS, CALIFORNIA

GND CON  
126.95 257.95  
LOS ALAMITOS TOWER\*  
123.85 251.15  
SOCAL DEP CON  
125.35 316.125

TOP ALTITUDE:  
6000

NOTE: RADAR required.  
NOTE: RNAV 1.  
NOTE: DME/DME/IRU or GPS required.  
NOTE: This procedure not authorized for turbojet aircraft.



DEPARTURE ROUTE DESCRIPTION

TAKEOFF RUNWAY 4R: Climb heading 041° to 540, then on heading 041° or as assigned by ATC for vectors to PIJIN, cross PIJIN at or above 4000, then on track 290° to cross HAWWC at or above 5000, thence . . . .

TAKEOFF RUNWAY 22L: Climb heading 221° to 540, then on heading 181° or as assigned by ATC for vectors to PIJIN, cross PIJIN at or above 4000, then on track 290° to cross HAWWC at or above 5000, thence . . . .

. . . . on (transition). Maintain 6000. Expect higher altitude 10 minutes after departure.

IKAYE TRANSITION (HAWWC3.IKAYE)

TAKEOFF MINIMUMS

Rwys 4L, 22R: NA-ATC.  
Rwys 4R, 22L: Standard.

NOTE: Chart not to scale.

LOS ALAMITOS, CALIFORNIA  
LOS ALAMITOS AAF (SLI)