

LOC/DME I-SFZ	APP CRS	Rwy Idg	5000
111.9	047°	TDZE	429
Chan 56		Apt Elev	441

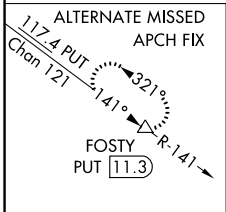
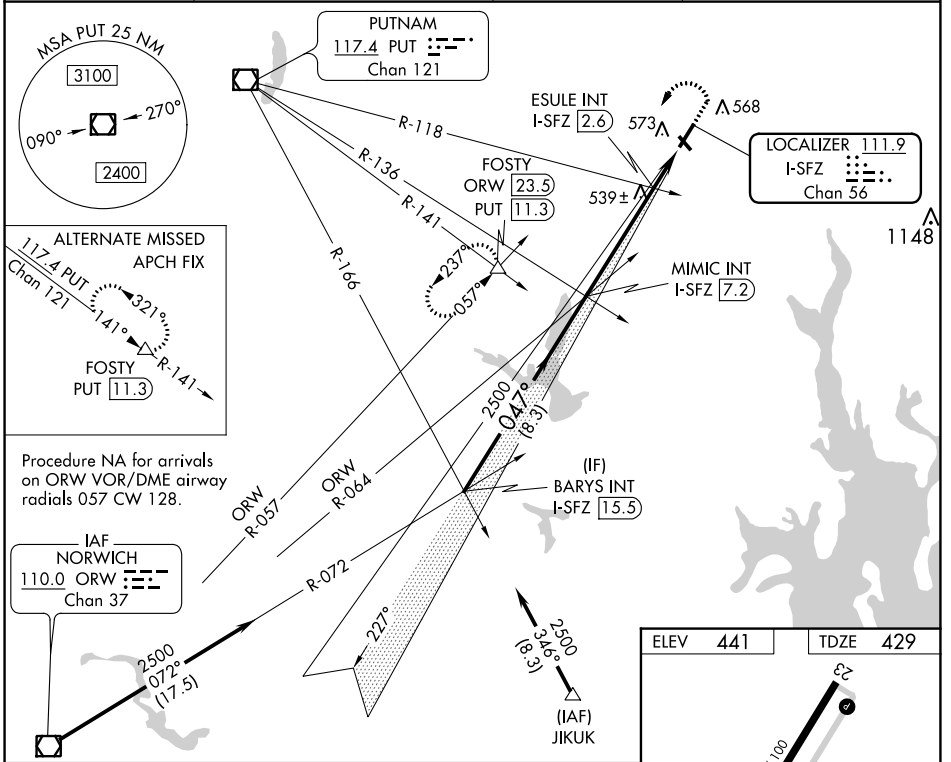
LOC RWY 5

NORTH CENTRAL STATE (SF/Z)

NA Circling Rwy 15, 33 NA at night. VDP NA with Providence altimeter setting. When local altimeter setting not received, use Providence altimeter setting and increase all MDA 100 feet; increase S-5 Cat C and Circling Cat C visibility ¼ mile, and ESULE fix minimums S-5 Cat C visibility ¼ mile.

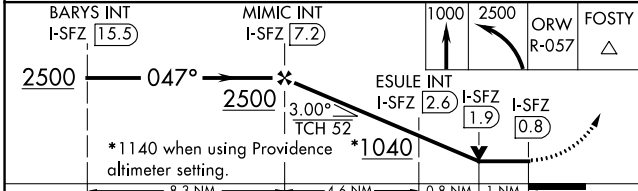
MALS MISSED APPROACH: Climb to 1000 then climbing left turn to 2500 on ORW VOR/DME R-057 to FOSTY INT/ ORW 23.5 DME and hold.

AWOS-3PT 120.775	PROVIDENCE APP CON ★ 123.675 244.875	CLNC DEL 124.35	UNICOM 123.075 (CTAF) 0
----------------------------	--	---------------------------	-----------------------------------



Procedure NA for arrivals on ORW VOR/DME airway radials 057 CW 128.

IAF NORWICH 110.0 ORW Chan 37



CATEGORY	A	B	C	D
S-5	1040-¾ 611 (600-¾)		1040-1½ 611 (600-1½)	NA
C CIRCLING	1040-1 599 (600-1)		1040-1¾ 599 (600-1¾)	NA
ESULE FIX MINIMUMS (DUAL VOR RECEIVERS OR DME REQUIRED)				
S-5	800-¾ 371 (400-¾)		800-⅞ 371 (400-⅞)	NA
C CIRCLING	900-1 459 (500-1)		900-1½ 459 (500-1½)	NA

ELEV 441	TDZE 429
----------	----------

HIRL Rwy 5-23 0
MIRL Rwy 15-33 0
REIL Rws 15, 23 and 33 0

FAF to MAP 6.4 NM

Knots	60	90	120	150	180
Min:Sec	6:24	4:16	3:12	2:34	2:08

NE-1, 22 FEB 2024 to 21 MAR 2024

NE-1, 22 FEB 2024 to 21 MAR 2024

WAAS CH 86431 W23A	APP CRS 227°	Rwy Idg TDZE Apt Elev	5000 429 441
--	------------------------	-----------------------------	---

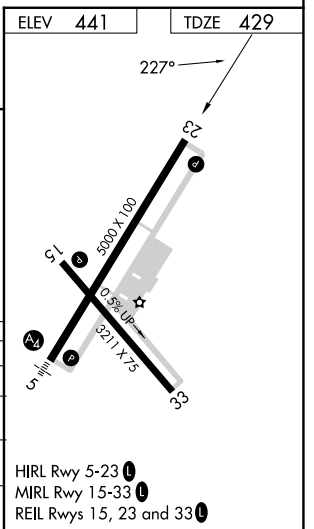
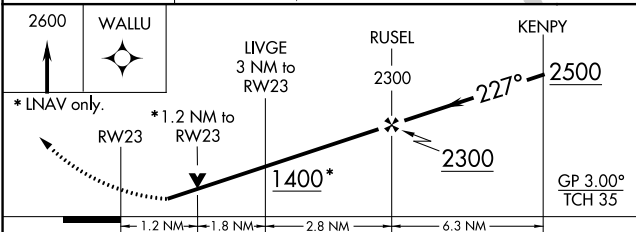
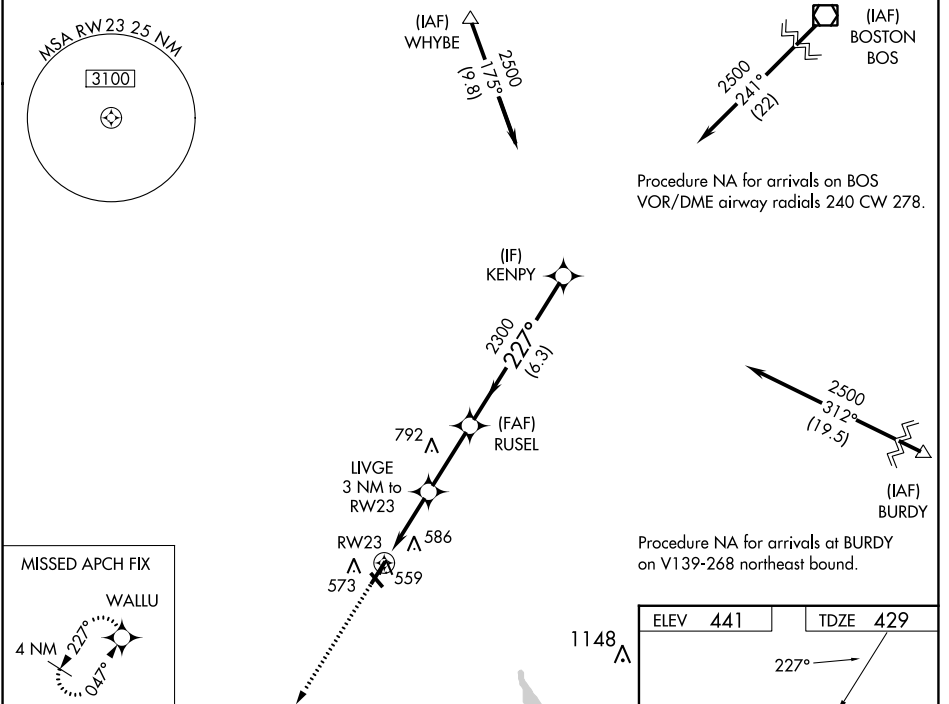
RNAV (GPS) RWY 23

NORTH CENTRAL STATE (S'F'Z)

⚠ Circling Rwy 15, 33 NA at night. Baro-VNAV NA when using Providence altimeter setting. For uncompensated Baro-VNAV systems, LNAV/VNAV NA below -15°C (4°F) or above 54°C (130°F).
⚠ DME/DME RNP-0.3 NA. VDP NA with Providence altimeter setting. When local altimeter setting not received, use Providence altimeter setting and increase all DA 82 feet and all MDA 100 feet; increase LPV all Cats visibility to 1/8, LNAV/VNAV all Cats visibility to 1/4 and LNAV Cat C visibility to 3/8. Rwy 23 helicopter visibility reduction below 3/4 SM NA.

MISSED APPROACH:
Climb to 2600 direct WALLU and hold.

AWOS-3PT 120.775	PROVIDENCE APP CON ★ 123.675 244.875	CLNC DEL 124.35	UNICOM 123.075 (CTAF) 0
----------------------------	--	---------------------------	-----------------------------------



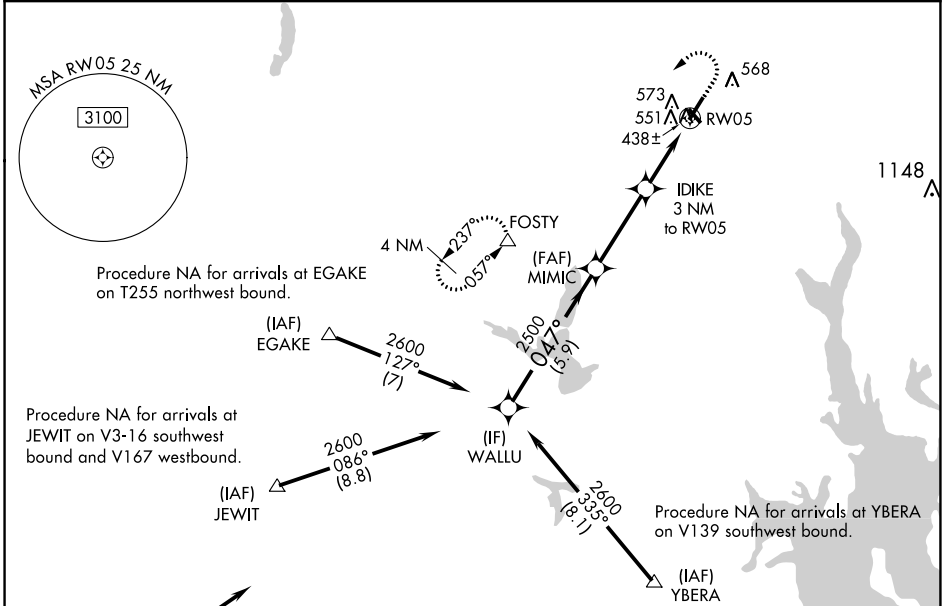
CATEGORY	A	B	C	D
LPV DA	679-7/8	250 (300-7/8)		NA
LNAV/VNAV DA	849-1 1/2	420 (500-1 1/2)		NA
LNAV MDA	820-1 391 (400-1)	820-1 1/8 391 (400-1 1/8)		NA
C CIRCLING	900-1 459 (500-1)	900-1 1/2 459 (500-1 1/2)		NA

WAAS CH 50231 W05A	APP CRS 047°	Rwy Idg TDZE Apt Elev	5000 429 441
--	------------------------	-----------------------------	---

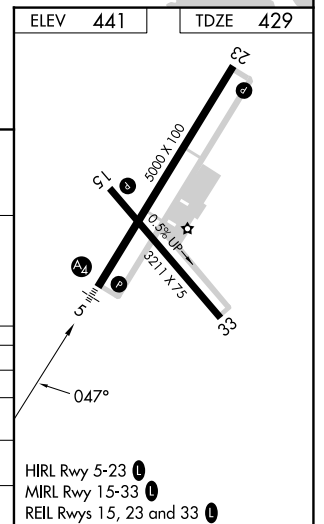
RNAV (GPS) RWY 5

NORTH CENTRAL STATE (SFZ)

RNP APCH - GPS.		MALS	MISSED APPROACH: Climb to 2000 then climbing left turn to 2500 direct FOSTY and hold.
<p>⚠ Circling Rwy 15, 33 NA at night. For inoperative MALS, increase LPV all Cats visibility to 3/8 mile. For inop ALS, increase LPV all Cats visibility to 3/8 SM and LNAV/VNAV all Cats visibility to 1 1/8 SM. For uncompensated Baro-VNAV systems, LNAV/VNAV NA below -15°C or above 54°C.</p>			
AWOS-3PT 120.775	PROVIDENCE APP CON * 123.675 244.875	CLNC DEL 124.35	UNICOM 123.075 (CTAF) 0



WALLU		MIMIC		2000	2500	FOSTY
2600	047°	2500	IDIKE 3 NM to RW05	1.1 NM to RW05		
GP 3.00°	2500	*1420				
TCH 52	5.9 NM	3.4 NM	1.9 NM	1.1		
CATEGORY	A	B	C	D		
LPV DA	700-3/4	271 (300-3/4)		NA		
LNAV/VNAV DA	835-1	406 (400-1)		NA		
LNAV MDA	820-3/4	391 (400-3/4)	820-7/8	391 (400-7/8)		
CIRCLING	900-1	459 (500-1)	900-1 1/2	459 (500-1 1/2)		



NE-1, 22 FEB 2024 to 21 MAR 2024

NE-1, 22 FEB 2024 to 21 MAR 2024

VOR/DME PVD 115.6 Chan 103	APP CRS 001°	Rwy Idg TDZE Apt Elev N/A 441
--	------------------------	--

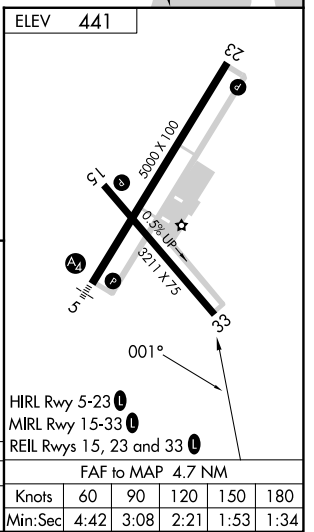
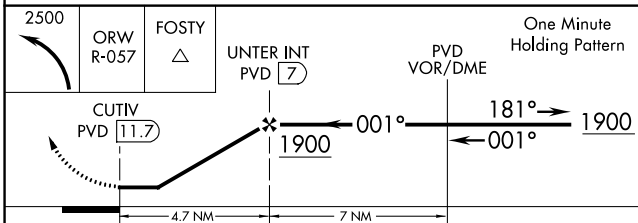
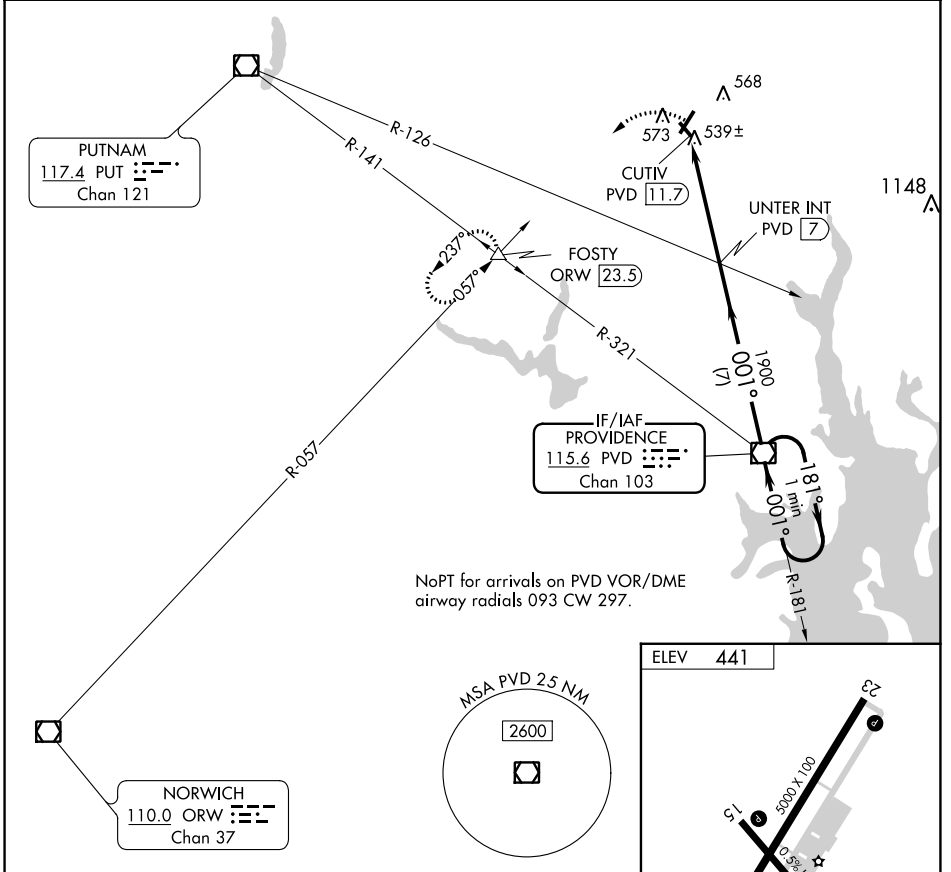
VOR-A

NORTH CENTRAL STATE (SFZ)

⚠ When local altimeter setting not received, use Providence altimeter setting and increase all MDA 100 feet, increase Circling visibility Cat C ¼ mile. Circling to Rwy 15/33 NA at night.

MISSED APPROACH: Climbing left turn to 2500 via ORW VOR/DME R-057 to FOSTY INT/ORW 23.5 DME and hold.

AWOS-3PT 120.775	PROVIDENCE APP CON ★ 123.675 244.875	CLNC DEL 124.35	UNICOM 123.075 (CTAF) 0
----------------------------	--	---------------------------	-----------------------------------



CATEGORY	A	B	C	D	
CIRCLING	980-1	539 (600-1)	980-1½ 539 (600-1½)	NA	
	Knots				
	60	90	120	150	180
	Min:Sec				
	4:42	3:08	2:21	1:53	1:34

NE-1, 22 FEB 2024 to 21 MAR 2024

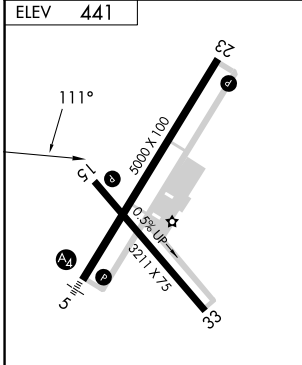
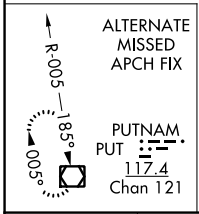
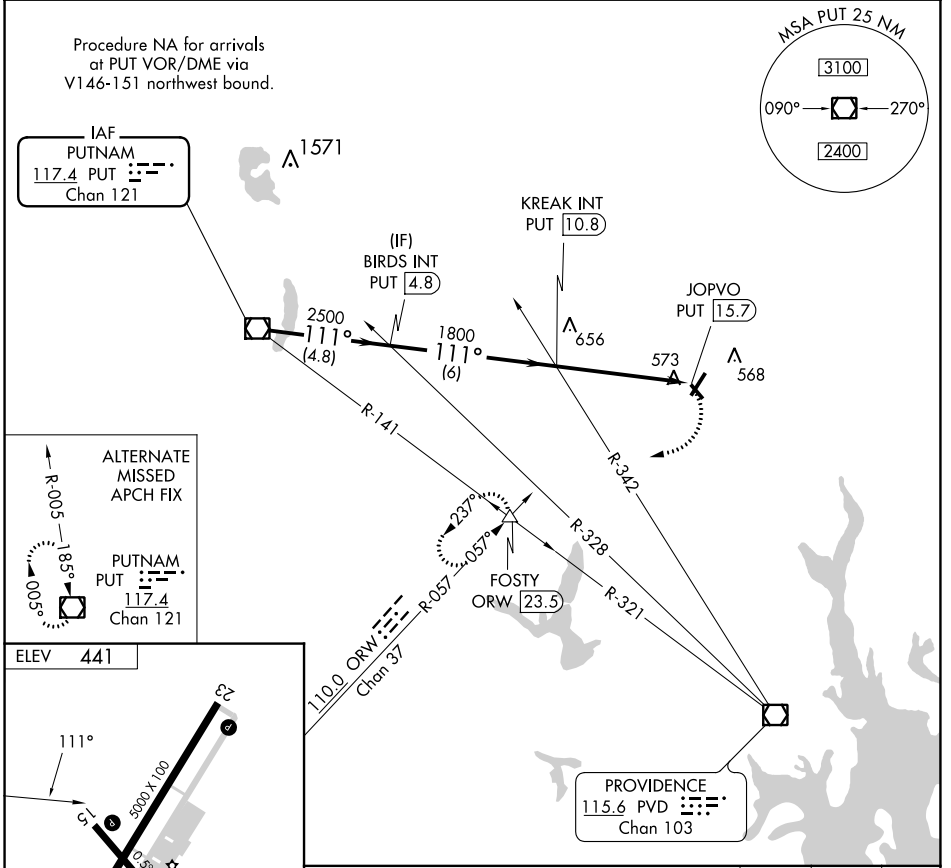
NE-1, 22 FEB 2024 to 21 MAR 2024

VOR/DME PUT 117.4 Chan 121	APP CRS 111°	Rwy Idg TDZE Apt Elev N/A N/A 441
--	------------------------	---

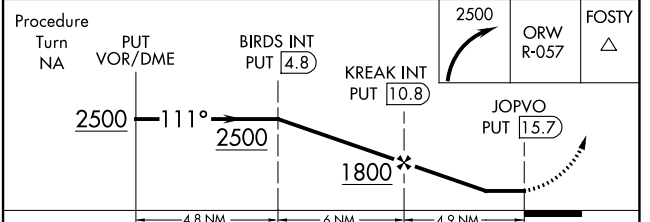
VOR-B
NORTH CENTRAL STATE (SFZ)

⚠ When local altimeter setting not received, use Providence altimeter setting and increase all MDA 100 feet, increase Circling visibility Cat C ¼ mile. Circling to Rwy 15/33 NA at night.
⚠ MISSED APPROACH: Climbing right turn to 2500 via ORW R-057 to FOSTY INT/ORW 23.5 DME and hold.

AWOS-3PT 120.775	PROVIDENCE APP CON ★ 123.675 244.875	CLNC DEL 124.35	UNICOM 123.075 (CTAF) 0
----------------------------	--	---------------------------	-----------------------------------



HIRL Rwy 5-23 **0**
MIRL Rwy 15-33 **0**
REIL Rwys 15, 23 and 33 **0**



FAF to MAP 4.9 NM					
Knots	60	90	120	150	180
Min:Sec	4:54	3:16	2:27	1:58	1:38
0 CIRCLING	980-1 539 (600-1)		980-1½ 539 (600-1½)		NA

NE-1, 22 FEB 2024 to 21 MAR 2024

NE-1, 22 FEB 2024 to 21 MAR 2024