

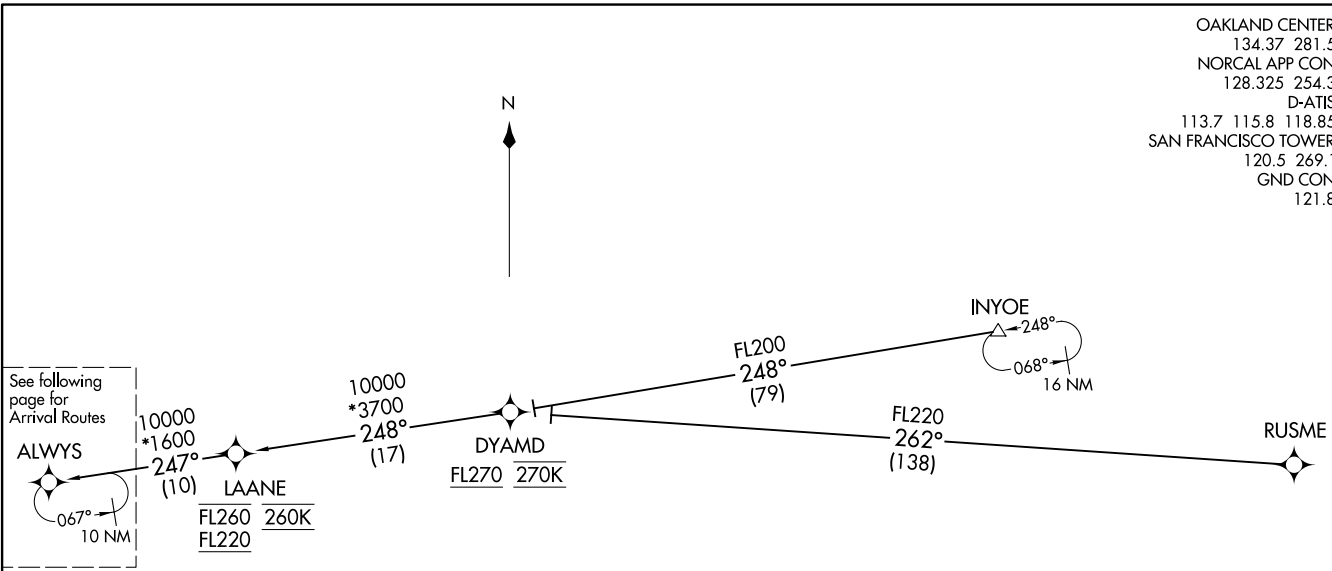
ALWAYS TWO ARRIVAL (RNAV) Transition Routes
(ALWYS,ALWYS2) 13SEP18

SAN FRANCISCO, CALIFORNIA
SAN FRANCISCO INTL (SFO)

OAKLAND CENTER
134.37 281.5
NORCAL APP CON
128.325 254.3
D-ATIS
113.7 115.8 118.85
SAN FRANCISCO TOWER
120.5 269.1
GND CON
121.8

(ALWYS,ALWYS2) 18256
ALWAYS TWO ARRIVAL (RNAV) Transition Routes

AL-375 (FAA)
SAN FRANCISCO INTL (SFO)
SAN FRANCISCO, CALIFORNIA



See following page for Arrival Routes

NOTE: RADAR required.
NOTE: RNAV 1.
NOTE: DME/DME/IRU or GPS required.
NOTE: Expect "descend via" clearance from Oakland Center.
Northern California TRACON will assign landing runway.

INYOE TRANSITION (INYOE.ALWYS2)
RUSME TRANSITION (RUSME.ALWYS2)

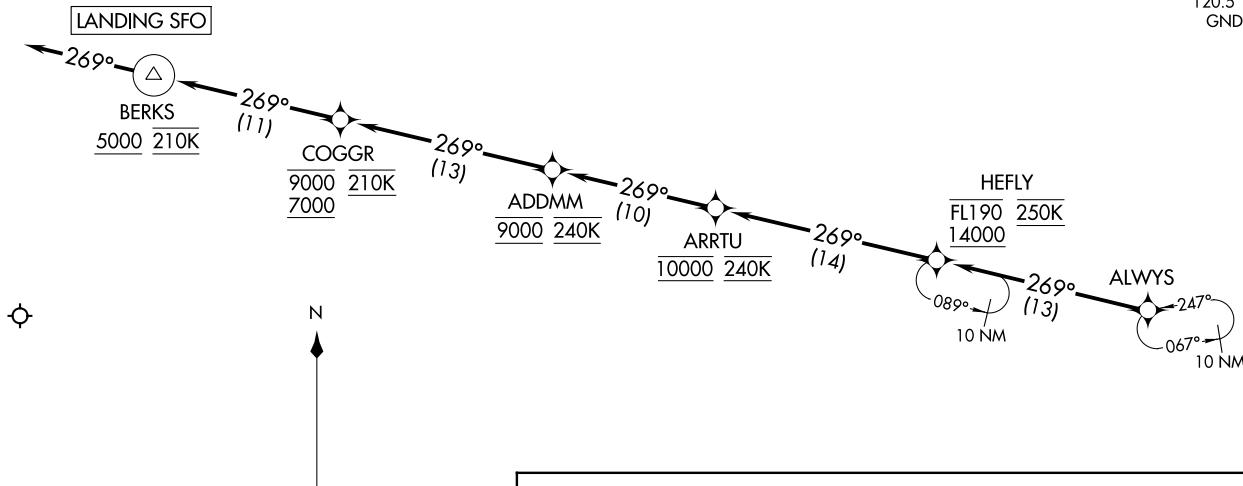
NOTE: Chart not to scale.

(CONTINUED ON FOLLOWING PAGE)

ALWAYS TWO ARRIVAL (RNAV) Arrival Routes
 (ALWYS,ALWYS2) 13SEP18

SAN FRANCISCO, CALIFORNIA
 SAN FRANCISCO INTL (SFO)

OAKLAND CENTER
 134.37 281.5
 NORCAL APP CON
 128.325 254.3
 D-ATIS
 113.7 115.8 118.85
 SAN FRANCISCO TOWER
 120.5 269.1
 GND CON
 121.8



(ALWYS,ALWYS2) 18236
 ALWAYS TWO ARRIVAL (RNAV) Arrival Routes
 AL-375 (FAA)

SAN FRANCISCO INTL (SFO)
 SAN FRANCISCO, CALIFORNIA

ARRIVAL ROUTE DESCRIPTION

LANDING RUNWAYS 19L/R: From ALWAYS on track 269° to cross HEFLY between 14000 and FL190 and at 250K, then on track 269° to cross ARRTU at 10000 and at 240K, then on track 269° to cross ADDMM at 9000 and at 240K, then on track 269° to cross COGGR between 7000 and 9000 and at 210K, then on track 269° to cross BERKS at or above 5000 and at 210K, then on track 269°. Expect ILS or RNAV (GPS) approach to Rwy 19L or RADAR vectors to final approach course.

NOTE: RADAR required.
 NOTE: RNAV 1.
 NOTE: DME/DME/IRU or GPS required.
 NOTE: Expect "descend via" clearance from Oakland Center. Northern California TRACON will assign landing runway.

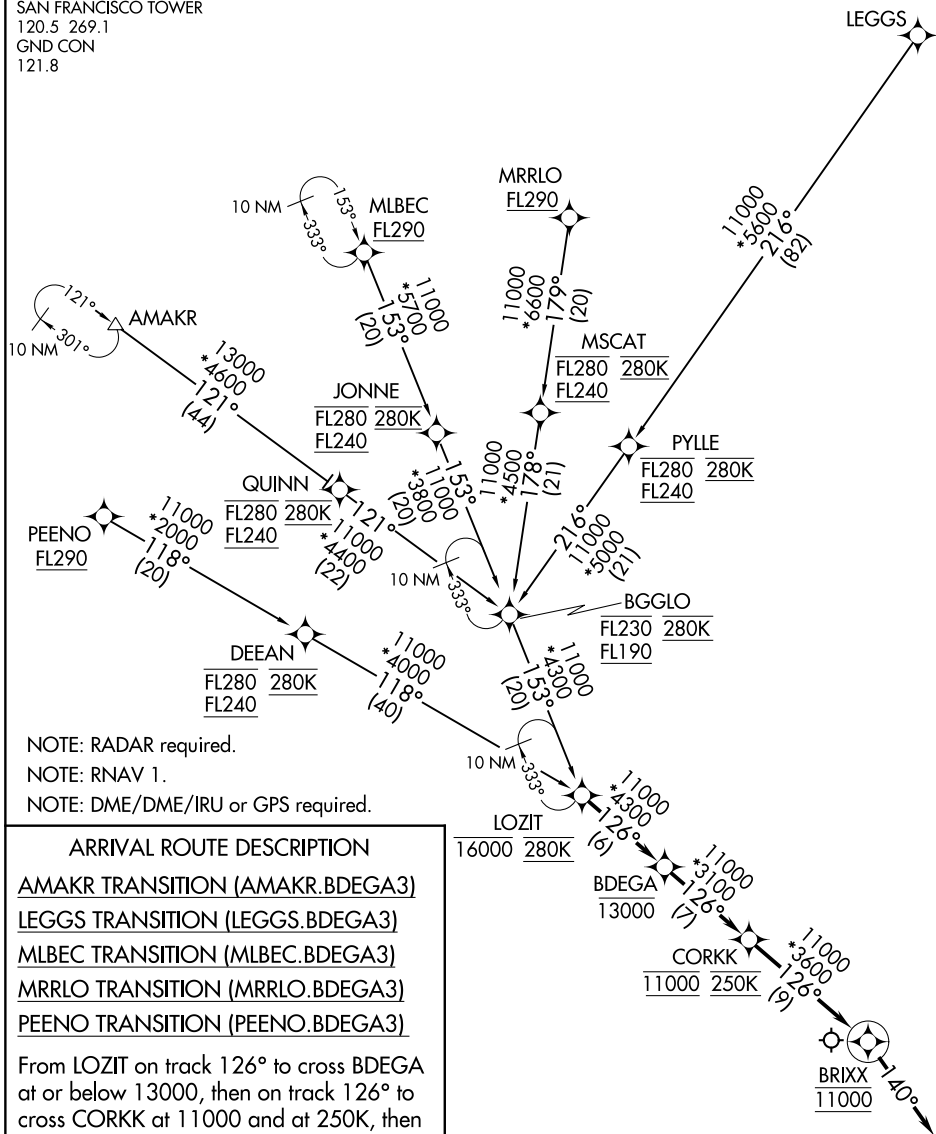
NOTE: Chart not to scale.

BDEGA THREE ARRIVAL (RNAV)

AL-375 (FAA)



OAKLAND CENTER
125.85 323.0
NORCAL APP CON
133.95 317.6
D-ATIS
113.7 115.8 118.85
SAN FRANCISCO TOWER
120.5 269.1
GND CON
121.8



NOTE: RADAR required.
NOTE: RNAV 1.
NOTE: DME/DME/IRU or GPS required.

ARRIVAL ROUTE DESCRIPTION

AMAKR TRANSITION (AMAKR.BDEGA3)

LEGG'S TRANSITION (LEGG'S.BDEGA3)

MLBEC TRANSITION (MLBEC.BDEGA3)

MRRLO TRANSITION (MRRLO.BDEGA3)

PEENO TRANSITION (PEENO.BDEGA3)

From LOZIT on track 126° to cross BDEGA at or below 13000, then on track 126° to cross CORKK at 11000 and at 250K, then on track 126° to BRIXX, then on track 140°.
Expect RADAR vectors to final approach course.

NOTE: Chart not to scale.

BDEGA THREE ARRIVAL (RNAV)

SW-2, 22 FEB 2024 to 21 MAR 2024

SW-2, 22 FEB 2024 to 21 MAR 2024

(BSR.BSR3) 23334

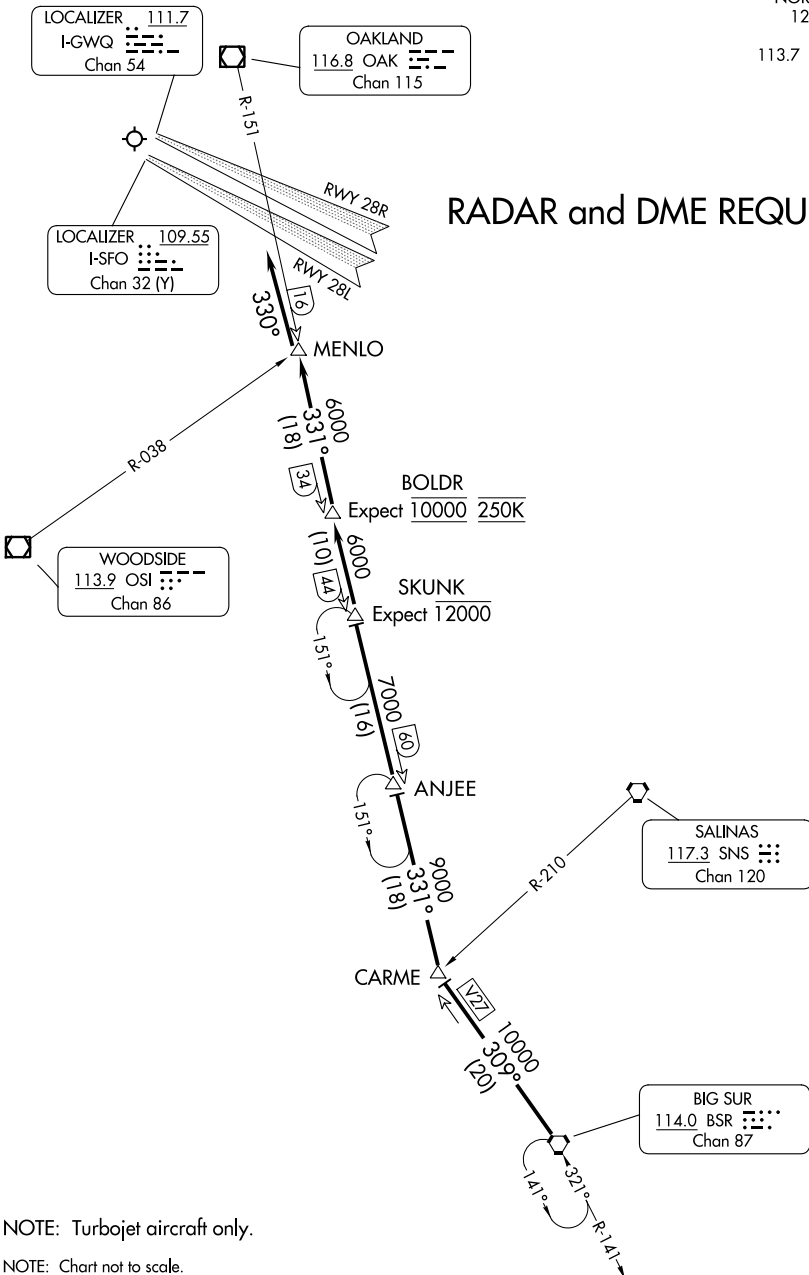
BIG SUR THREE ARRIVAL

AL-375 (FAA)

SAN FRANCISCO INTL (SFO)
SAN FRANCISCO, CALIFORNIA

OAKLAND CENTER
125.45 307.3
NORCAL APP CON
128.575 254.25
D-ATIS
113.7 115.8 118.85

RADAR and DME REQUIRED



SW-2, 22 FEB 2024 to 21 MAR 2024

SW-2, 22 FEB 2024 to 21 MAR 2024

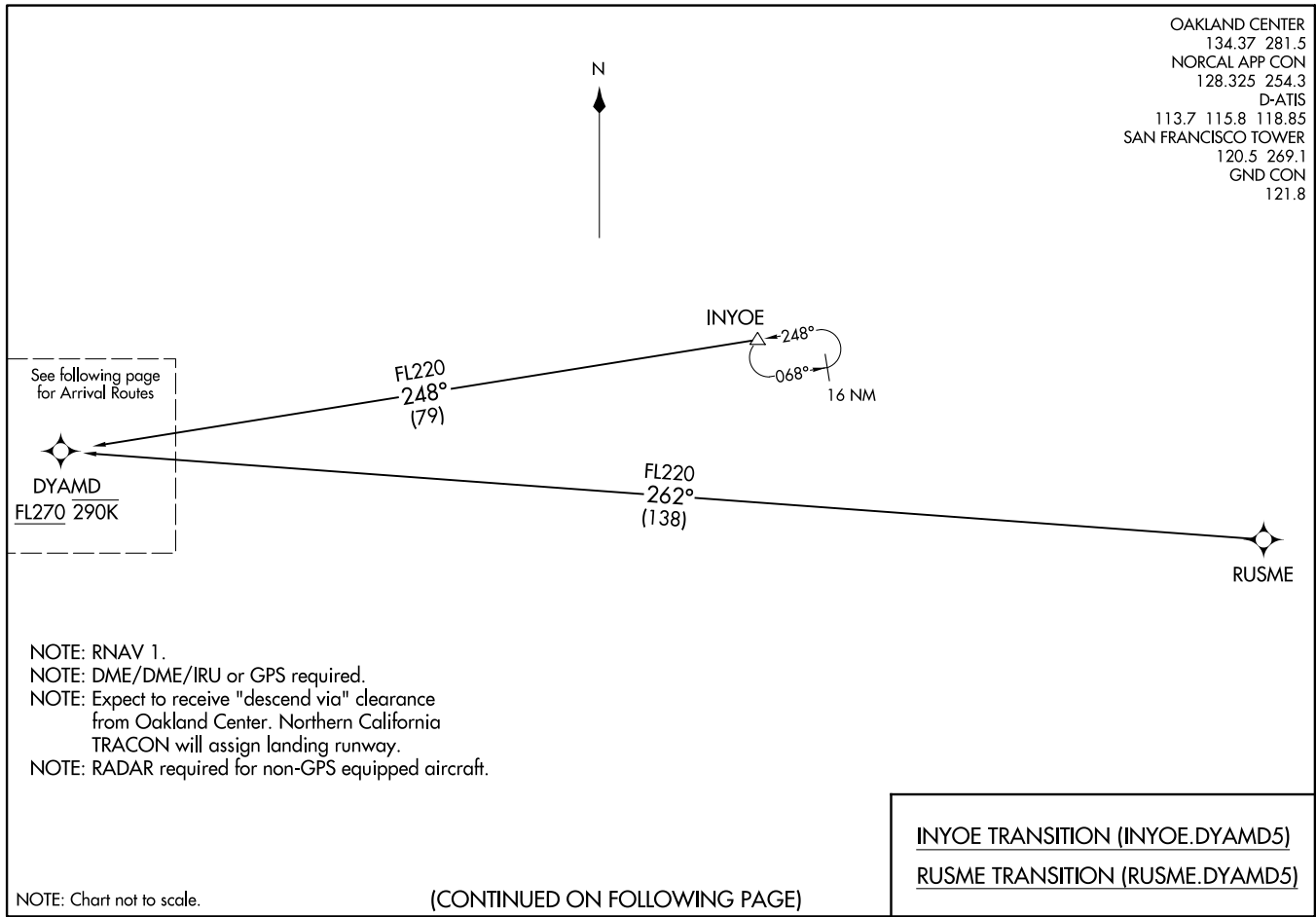
BIG SUR THREE ARRIVAL

(BSR.BSR3) 15SEP16

SAN FRANCISCO, CALIFORNIA
SAN FRANCISCO INTL (SFO)

DYAMD FIVE ARRIVAL (RNAV) Transition Routes
(DYAMD.DYAMD5) 03JAN19

SAN FRANCISCO, CALIFORNIA
SAN FRANCISCO INTL (SFO)



(CONTINUED ON FOLLOWING PAGE)

OAKLAND CENTER
134.37 281.5
NORCAL APP CON
128.325 254.3
D-ATIS
113.7 115.8 118.85
SAN FRANCISCO TOWER
120.5 269.1
GND CON
121.8

(DYAMD.DYAMD5) 19003
DYAMD FIVE ARRIVAL (RNAV) Transition Routes
AL-375 (FAA)

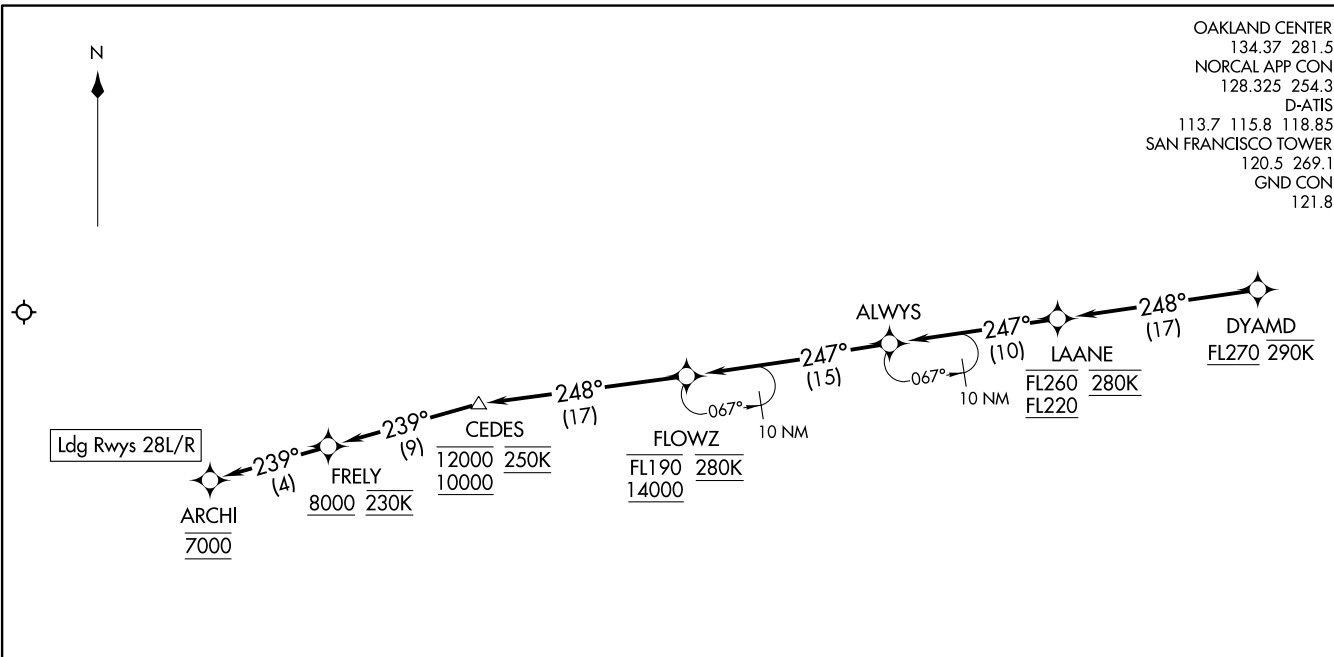
SAN FRANCISCO INTL (SFO)
SAN FRANCISCO, CALIFORNIA

INYOE TRANSITION (INYOE.DYAMD5)
RUSME TRANSITION (RUSME.DYAMD5)

DYAMD FIVE ARRIVAL (RNAV) Arrival Routes
 (DYAMD: DYAMD5) 03JAN19

(DYAMD: DYAMD5) 19003
 DYAMD FIVE ARRIVAL (RNAV) Arrival Routes
 AL-375 (FAA)

OAKLAND CENTER 134.37 281.5
 NORCAL APP CON 128.325 254.3
 D-ATIS 113.7 115.8 118.85
 SAN FRANCISCO TOWER 120.5 269.1
 GND CON 121.8



SAN FRANCISCO, CALIFORNIA
 SAN FRANCISCO INTL (SFO)

SAN FRANCISCO INTL (SFO)
 SAN FRANCISCO, CALIFORNIA

NOTE: RNAV 1.
 NOTE: DME/DME/IRU or GPS required.
 NOTE: Expect to receive "descend via" clearance from Oakland Center. Northern California TRACON will assign landing runway.
 NOTE: RADAR required for non-GPS equipped aircraft.

ARRIVAL ROUTE DESCRIPTION
 From DYAMD on track 248° to cross LAANE between FL220 and FL260 and at 280K, then on track 247° to ALWAYS.
LANDING RUNWAYS 28L/R: From ALWAYS on track 247° to cross FLOWZ between 14000 and FL190 and at 280K, then on track 248° to cross CEDES between 10000 and 12000 and at 250K, then on track 239° to cross FRELY at or above 8000 and at 230K, then on track 239° to cross ARCHI at 7000. Expect assigned instrument approach procedure.

NOTE: Chart not to scale.

ARRIVAL ROUTE DESCRIPTION

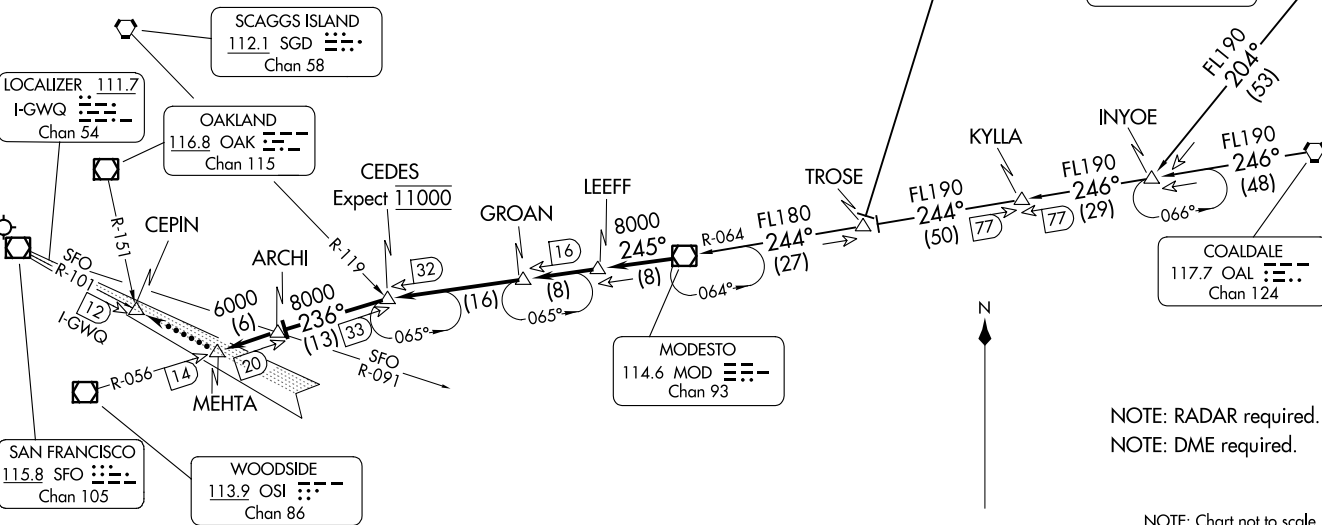
COALDALE TRANSITION (OAL.MOD9): From over OAL VORTAC on OAL R-246 and MOD R-064 to MOD VOR/DME. Thence. . . .

MINA TRANSITION (MVA.MOD9): From over MVA VORTAC on MVA R-204 and OAL R-246 and MOD R-064 to MOD VOR/DME. Thence. . . .

MUSTANG TRANSITION (FMG.MOD9): From over FMG VORTAC on FMG R-182 and MOD R-064 to MOD VOR/DME. Thence. . . .

. . . . From over MOD VOR/DME on MOD R-245 to LEEFF, then on MOD R-245 to GROAN, then on MOD R-245 to CEDES, then on OSI VOR/DME R-056 to ARCHI, then on OSI R-056 to MEHTA. Expect RADAR vectors to final approach course.

LOST COMMUNICATIONS: Intercept and proceed on SFO RWY 28R localizer to CEPIN.



OAKLAND CENTER
134.375 281.5
NORCAL APP CON
128.325 254.3
D-ATIS
113.7 115.8 118.85

MUSTANG
117.9 FMG
Chan 126

MINA
115.1 MVA
Chan 98

COALDALE
117.7 OAL
Chan 124

MODESTO
114.6 MOD
Chan 93

LOCALIZER 111.7
I-GWQ
Chan 54

OAKLAND
116.8 OAK
Chan 115

SCAGGS ISLAND
112.1 SGD
Chan 58

SAN FRANCISCO
115.8 SFO
Chan 105

WOODSIDE
113.9 OSI
Chan 86

NOTE: RADAR required.
NOTE: DME required.

NOTE: Chart not to scale.

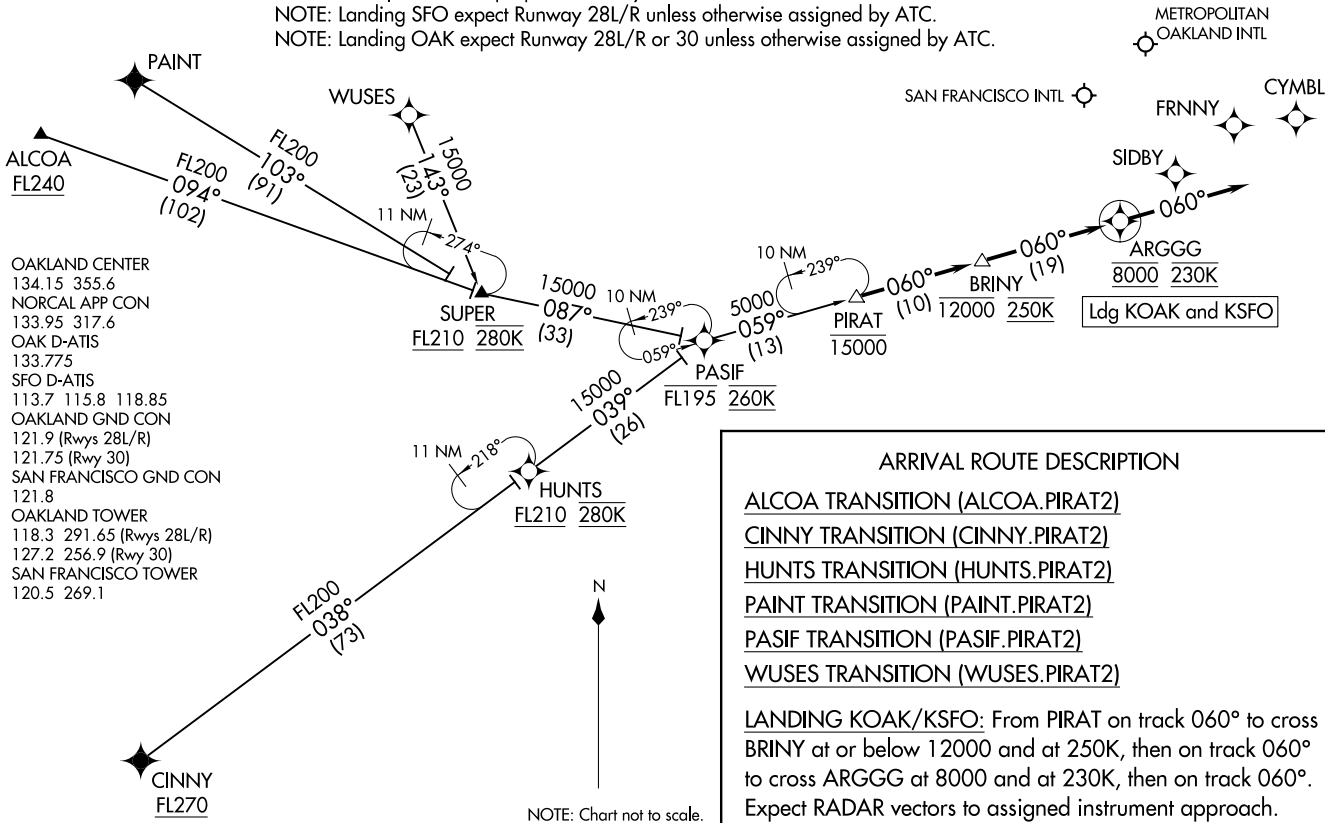
MODESTO NINE ARRIVAL
 (MOD.MOD9) 15AUG19
 SAN FRANCISCO, CALIFORNIA
 SAN FRANCISCO INTL (SFO)

(MOD.MOD9) 23334
 MODESTO NINE ARRIVAL
 AL-375 (FAA)
 SAN FRANCISCO INTL (SFO)
 SAN FRANCISCO, CALIFORNIA

NOTE: RADAR required.
 NOTE: RNAV 1.
 NOTE: GPS required.
 NOTE: Turbojet and turboprop aircraft only.
 NOTE: Landing SFO expect Runway 28L/R unless otherwise assigned by ATC.
 NOTE: Landing OAK expect Runway 28L/R or 30 unless otherwise assigned by ATC.

PIRAT TWO ARRIVAL (RNAV)
 (PIRAT.PIRAT2) 25APR19

SAN FRANCISCO, CALIFORNIA



OAKLAND CENTER
 134.15 355.6
 NORCAL APP CON
 133.95 317.6
 OAK D-ATIS
 133.775
 SFO D-ATIS
 113.7 115.8 118.85
 OAKLAND GND CON
 121.9 (Rwys 28L/R)
 121.75 (Rwy 30)
 SAN FRANCISCO GND CON
 121.8
 OAKLAND TOWER
 118.3 291.65 (Rwys 28L/R)
 127.2 256.9 (Rwy 30)
 SAN FRANCISCO TOWER
 120.5 269.1

NOTE: Chart not to scale.

ARRIVAL ROUTE DESCRIPTION

ALCOA TRANSITION (ALCOA.PIRAT2)
CINNY TRANSITION (CINNY.PIRAT2)
HUNTS TRANSITION (HUNTS.PIRAT2)
PAINT TRANSITION (PAINT.PIRAT2)
PASIF TRANSITION (PASIF.PIRAT2)
WUSES TRANSITION (WUSES.PIRAT2)

LANDING KOAK/KSFO: From PIRAT on track 060° to cross BRINY at or below 12000 and at 250K, then on track 060° to cross ARGGG at 8000 and at 230K, then on track 060°. Expect RADAR vectors to assigned instrument approach.

PIRAT TWO ARRIVAL (RNAV)
 (PIRAT.PIRAT2) 20198

AL-375 (FAA)

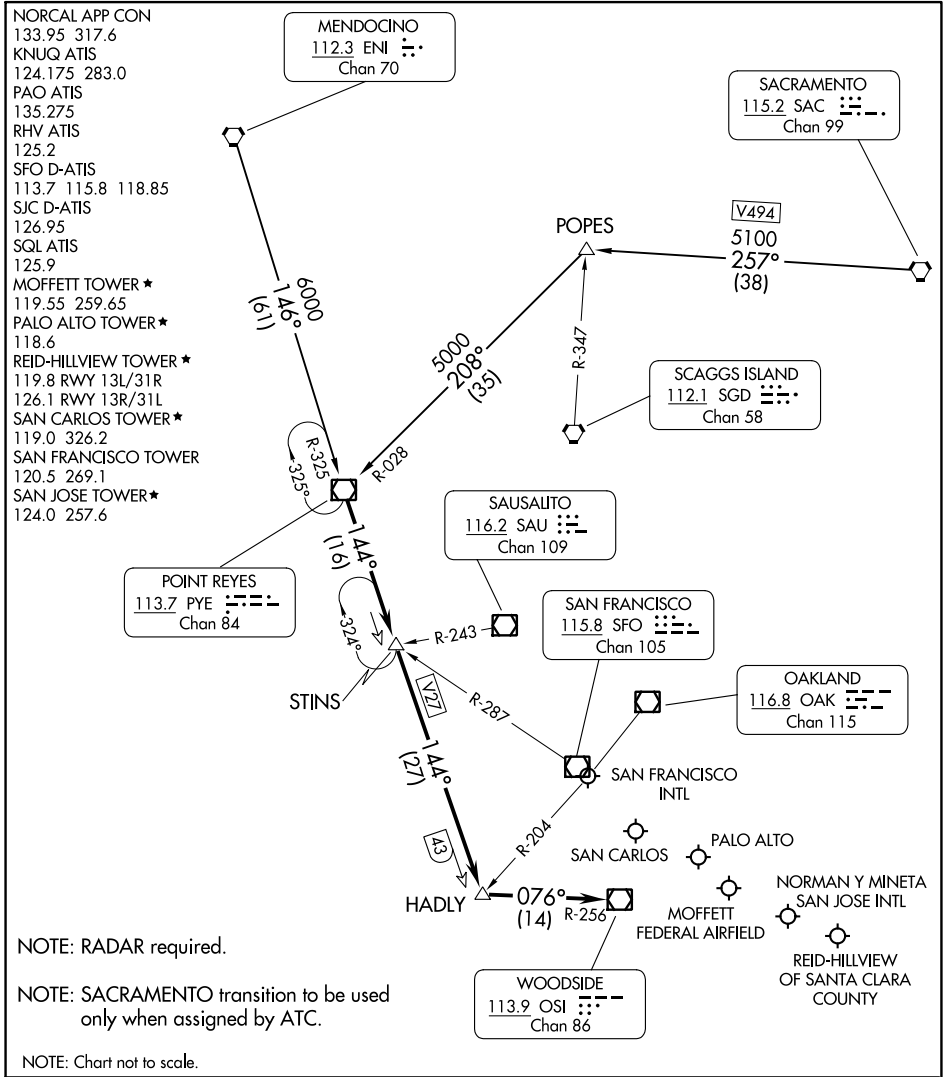
SAN FRANCISCO, CALIFORNIA

(PYE.PYE3) 23334

POINT REYES THREE ARRIVAL

AL-375 (FAA)

SAN FRANCISCO, CALIFORNIA



SW-2, 22 FEB 2024 to 21 MAR 2024

SW-2, 22 FEB 2024 to 21 MAR 2024

ARRIVAL ROUTE DESCRIPTION

MENDOCINO TRANSITION (ENI.PYE3): From over ENI VORTAC on ENI R-146 and PYE R-325 to PYE VOR/DME. Thence. . .

SACRAMENTO TRANSITION (SAC.PYE3): From over SAC VORTAC on SAC R-257 and PYE R-028 to PYE VOR/DME. Thence. . .

. . . From over PYE VOR/DME on PYE R-144 to HADLY, then on OSI R-256 to OSI VOR/DME. Expect RADAR vectors to final approach course.

POINT REYES THREE ARRIVAL

(PYE.PYE3) 22JUN17

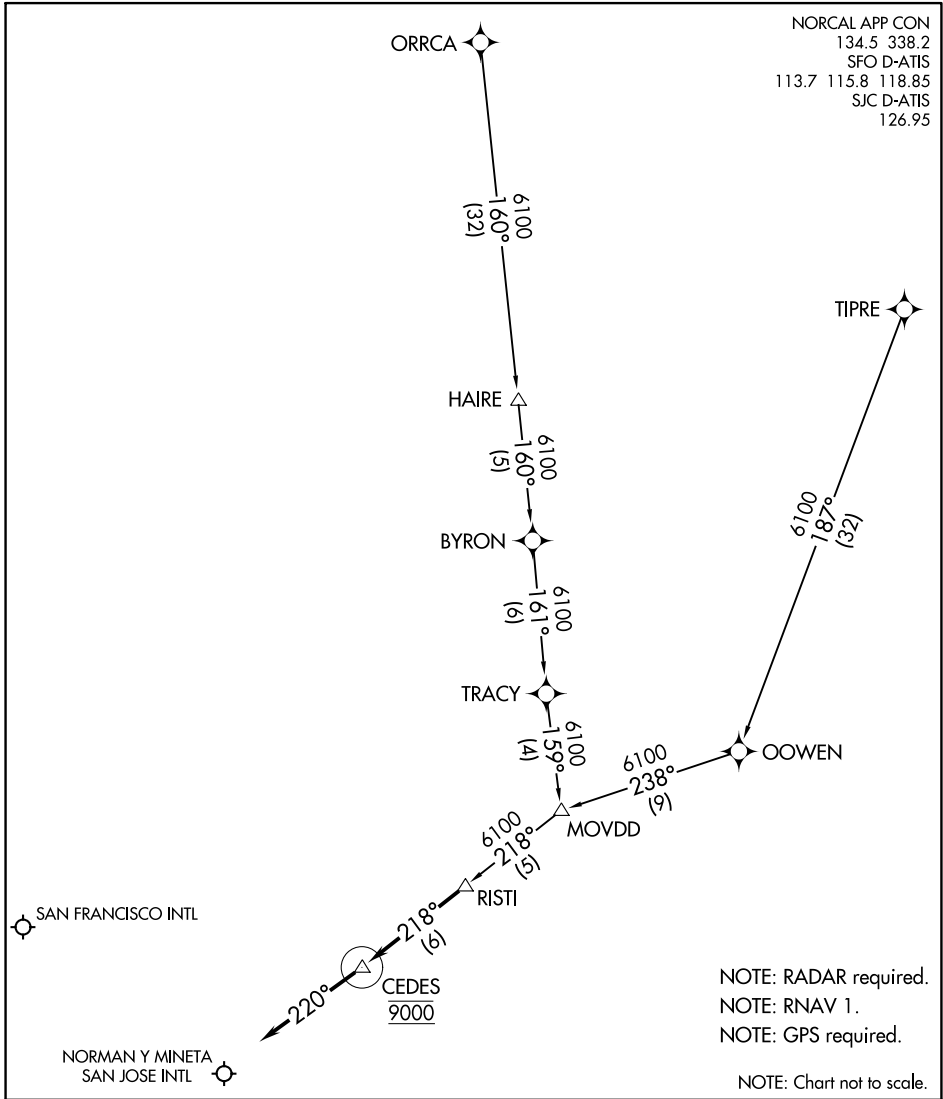
SAN FRANCISCO, CALIFORNIA

RISTI ONE ARRIVAL (RNAV)

AL-375 (FAA)

SAN FRANCISCO, CALIFORNIA

NORCAL APP CON
 134.5 338.2
 SFO D-ATIS
 113.7 115.8 118.85
 SJC D-ATIS
 126.95



SW-2, 22 FEB 2024 to 21 MAR 2024

SW-2, 22 FEB 2024 to 21 MAR 2024

ARRIVAL ROUTE DESCRIPTION

ORRCA TRANSITION (ORRCA.RISTI1)

TIPRE TRANSITION (TIPRE.RISTI1)

LANDING KSFO/KSJC: From RISTI on track 218° to cross CEDES at 9000, then on heading 220° or as assigned by ATC. Expect RADAR vectors to final approach course.

RISTI ONE ARRIVAL (RNAV)

SAN FRANCISCO, CALIFORNIA

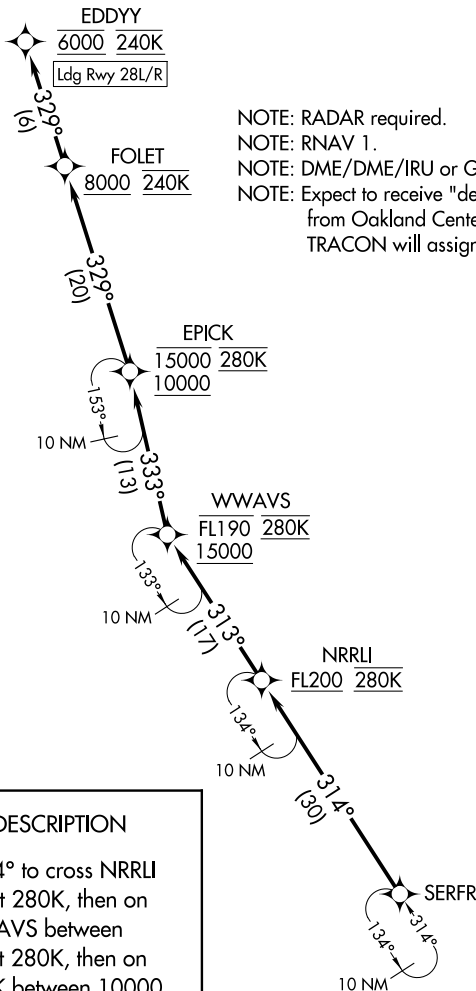
(SERFR.SERFR4) 19339

SERFR FOUR ARRIVAL (RNAV)

AL-375 (FAA)

SAN FRANCISCO INTL (SFO)
SAN FRANCISCO, CALIFORNIA

OAKLAND CENTER
134.55 290.5
NORCAL APP CON
128.575 254.25
D-ATIS
113.7 115.8 118.85
SAN FRANCISCO TOWER
120.5 269.1
GND CON
121.8



NOTE: RADAR required.
NOTE: RNAV 1.
NOTE: DME/DME/IRU or GPS required.
NOTE: Expect to receive "descend via" clearance from Oakland Center. Northern California TRACON will assign landing runway.

ARRIVAL ROUTE DESCRIPTION

From SERFR on track 314° to cross NRRLI at or above FL200 and at 280K, then on track 313° to cross WWAVS between 15000 and FL190 and at 280K, then on track 333° to cross EPICK between 10000 and 15000 and at 280K, then on track 329° to cross FOLET at or above 8000 and at 240K, then on track 329° to cross EDDYY at 6000 and at 240K. Expect assigned instrument approach (Rwy 28L/R).

STOKD

MAKRS

NOTE: Chart not to scale.

SERFR FOUR ARRIVAL (RNAV)

(SERFR.SERFR4) 05DEC19

SAN FRANCISCO, CALIFORNIA
SAN FRANCISCO INTL (SFO)

SW-2, 22 FEB 2024 to 21 MAR 2024

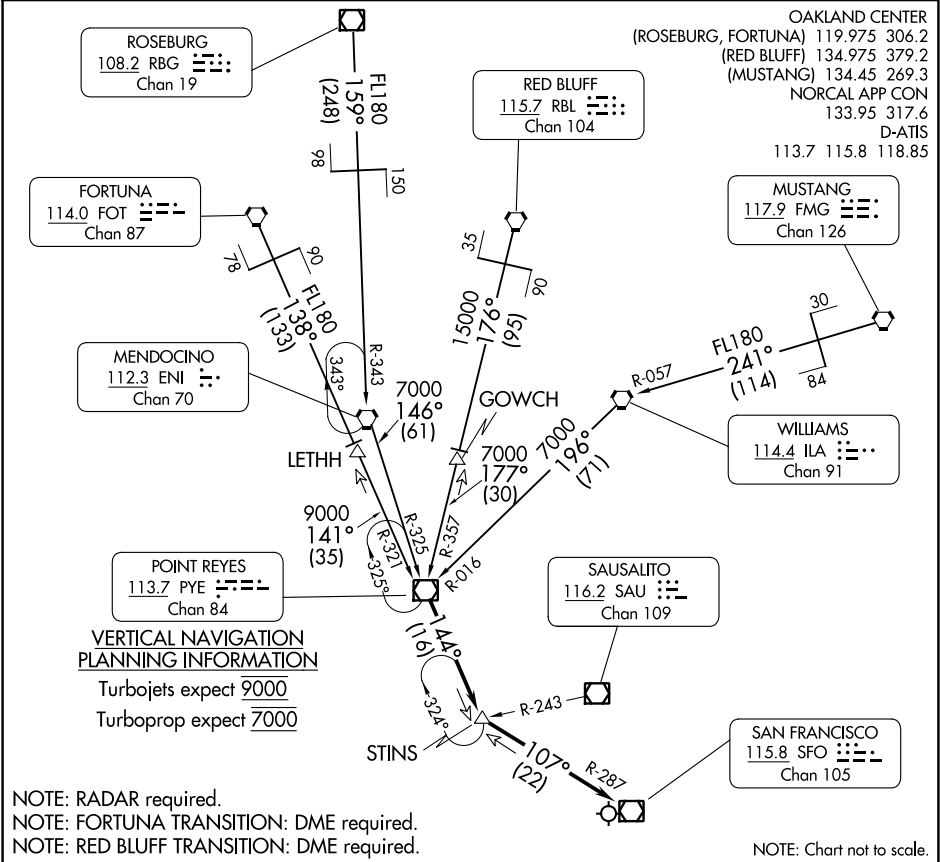
SW-2, 22 FEB 2024 to 21 MAR 2024

STINS FOUR ARRIVAL

AL-375 (FAA)

SAN FRANCISCO INTL (SFO)
SAN FRANCISCO, CALIFORNIA

OAKLAND CENTER
 (ROSEBURG, FORTUNA) 119.975 306.2
 (RED BLUFF) 134.975 379.2
 (MUSTANG) 134.45 269.3
 NORCAL APP CON
 133.95 317.6
 D-ATIS
 113.7 115.8 118.85



SW-2, 22 FEB 2024 to 21 MAR 2024

SW-2, 22 FEB 2024 to 21 MAR 2024

ARRIVAL ROUTE DESCRIPTION

FORTUNA TRANSITION (FOT.STINS4): From over FOT VORTAC on FOT R-138 and PYE R-321 to LETHH, then on PYE R-321 to PYE VOR/DME. Thence. . .

MENDOCINO TRANSITION (ENI.STINS4): From over ENI VORTAC on ENI R-146 and PYE R-325 to PYE VOR/DME. Thence. . .

MUSTANG TRANSITION (FMG.STINS4): From over FMG VORTAC on FMG R-241 and ILA R-057 to ILA VORTAC, then on ILA R-196 and PYE R-016 to PYE VOR/DME. Thence. . .

RED BLUFF TRANSITION (RBL.STINS4): From over RBL VORTAC on RBL R-176 and PYE R-357 to GOWCH, then on PYE R-357 to PYE VOR/DME. Thence. . .

ROSEBURG TRANSITION (RBG.STINS4): From over RBG VOR/DME on RBG R-159 and ENI R-343 to ENI VORTAC, then on ENI R-146 and PYE R-325 to PYE VOR/DME. Thence. . .

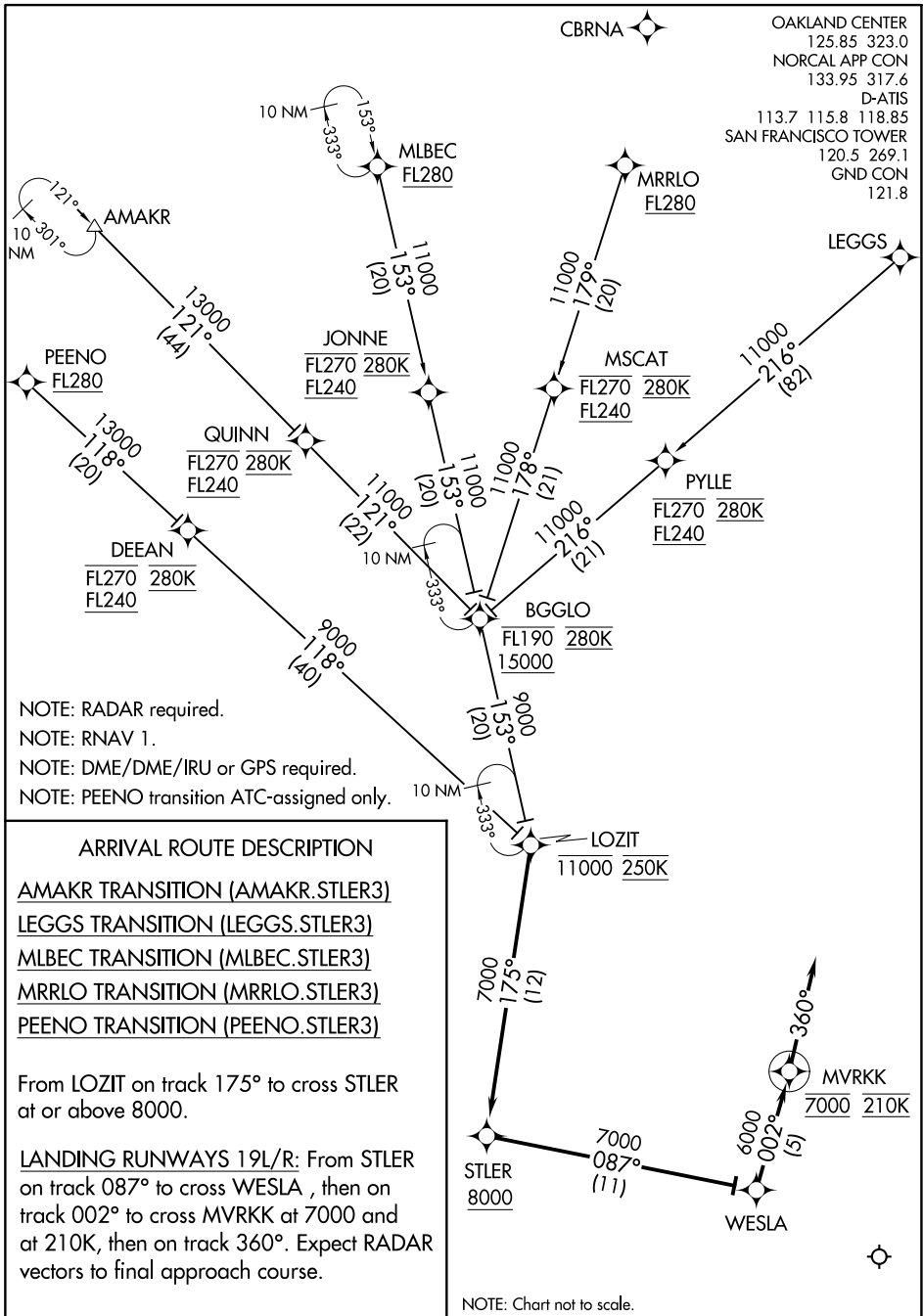
. . . From over PYE VOR/DME on PYE R-144 to STINS, then on SFO R-287 to SFO VOR/DME. Expect RADAR vectors to final approach course.

(LOZIT.STLER3) 18256

STLER THREE ARRIVAL (RNAV)

AL-375 (FAA)

SAN FRANCISCO INTL (SF'O)
SAN FRANCISCO, CALIFORNIA



SW-2, 22 FEB 2024 to 21 MAR 2024

SW-2, 22 FEB 2024 to 21 MAR 2024

STLER THREE ARRIVAL (RNAV)

(LOZIT.STLER3) 13SEP18

SAN FRANCISCO, CALIFORNIA
SAN FRANCISCO INTL (SF'O)

(SERFR.WWAVS1) 17173

WWAVS ONE ARRIVAL (RNAV)

AL-375 (FAA)

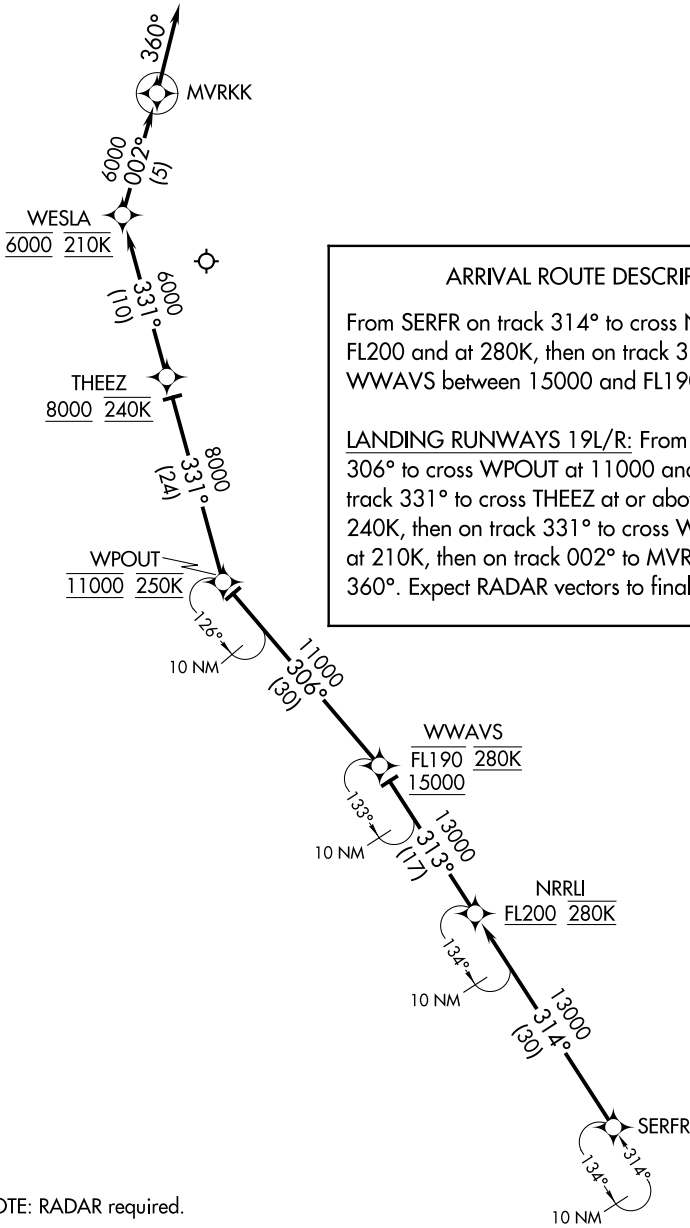
SAN FRANCISCO INTL (SFO)
SAN FRANCISCO, CALIFORNIA

D-ATIS
113.7 115.8 118.85
OAKLAND CENTER
134.55 290.5
NORCAL APP CON
128.575 254.25
SAN FRANCISCO TOWER
120.5 269.1
GND CON
121.8

ARRIVAL ROUTE DESCRIPTION

From SERFR on track 314° to cross NRRLI at or above FL200 and at 280K, then on track 313° to cross WWAVS between 15000 and FL190 and at 280K.

LANDING RUNWAYS 19L/R: From WWAVS on track 306° to cross WPOUT at 11000 and at 250K, then on track 331° to cross THEEZ at or above 8000 and at 240K, then on track 331° to cross WESLA at 6000 and at 210K, then on track 002° to MVRKK, then on track 360°. Expect RADAR vectors to final approach course.



ARRIVAL ROUTE DESCRIPTION

From SERFR on track 314° to cross NRRLI at or above FL200 and at 280K, then on track 313° to cross WWAVS between 15000 and FL190 and at 280K.

LANDING RUNWAYS 19L/R: From WWAVS on track 306° to cross WPOUT at 11000 and at 250K, then on track 331° to cross THEEZ at or above 8000 and at 240K, then on track 331° to cross WESLA at 6000 and at 210K, then on track 002° to MVRKK, then on track 360°. Expect RADAR vectors to final approach course.

SW-2, 22 FEB 2024 to 21 MAR 2024

SW-2, 22 FEB 2024 to 21 MAR 2024

NOTE: RADAR required.

NOTE: RNAV 1.

NOTE: DME/DME/IRU or GPS required.

NOTE: Chart not to scale.

MAKRS \triangle



WWAVS ONE ARRIVAL (RNAV)

(SERFR.WWAVS1) 10DEC15

SAN FRANCISCO, CALIFORNIA
SAN FRANCISCO INTL (SFO)

ARRIVAL ROUTE DESCRIPTION

From YOSEM on track 248° to SNORA, then on track 248° to cross ZOMER at/above FL270 and at 280K.

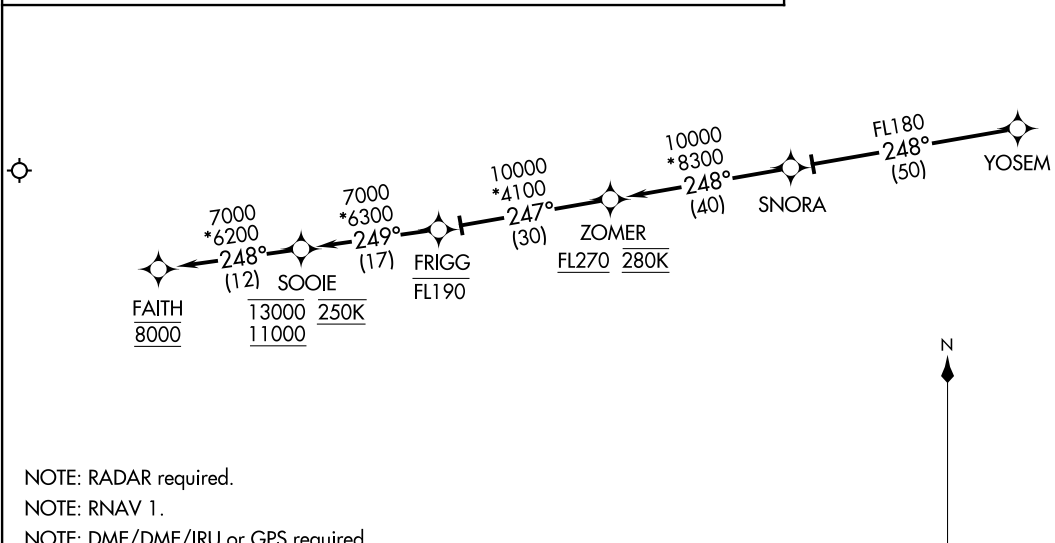
LANDING RUNWAYS 28L/R: From ZOMER on track 247° to cross FRIGG at/below FL190, then on track 249° to cross SOOIE between 11000 and 13000 and at 250K, then on track 248° to cross FAITH at 8000. Expect assigned instrument approach procedure, or expect RADAR vectors to final.

OAKLAND CENTER
134.375 281.5
NORCAL APP CON
128.325 254.3
D-ATIS
113.7 115.8 118.85
SAN FRANCISCO TOWER
120.5 269.1
GND CON
121.8

(YOSEM, YOSEM3) 17173
YOSEM THREE ARRIVAL (RNAV)

AL-375 (FAA)

SAN FRANCISCO INTL (SFO)
SAN FRANCISCO, CALIFORNIA



- NOTE: RADAR required.
- NOTE: RNAV 1.
- NOTE: DME/DME/IRU or GPS required.
- NOTE: YOSEM3 STAR ATC assigned only.
- NOTE: Chart not to scale.

YOSEM THREE ARRIVAL (RNAV)
(YOSEM, YOSEM3) 30ARR15

SAN FRANCISCO, CALIFORNIA
SAN FRANCISCO INTL (SFO)