

SHREK TWO ARRIVAL (RNAV)

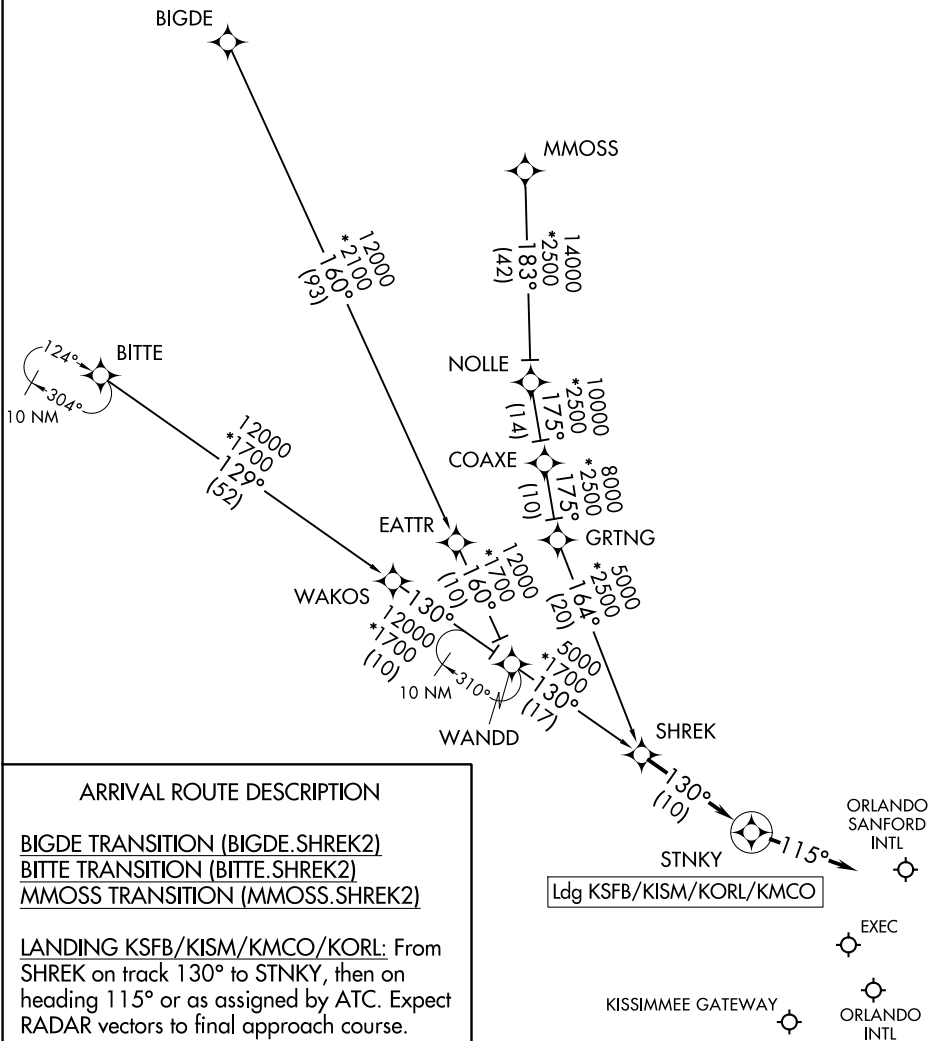
ORLANDO, FLORIDA

RNAV 1 - DME/DME/IRU or GPS.

RADAR required.

ORLANDO APP CON 134.05 339.8
 JACKSONVILLE APP CON 128.675 263.05
 ISM ATIS 128.775
 MCO D-ATIS ARR 121.25
 ORL ATIS 127.25
 SFB ATIS 125.975

NOTE: Jets landing ISM and ORL, ATC assigned only.
 NOTE: Turboprops and props only landing MCO.
 NOTE: Landing all airports, expect RADAR vectors after STINKY.



SE-3, 22 FEB 2024 to 21 MAR 2024

SE-3, 22 FEB 2024 to 21 MAR 2024

SHREK TWO ARRIVAL (RNAV)

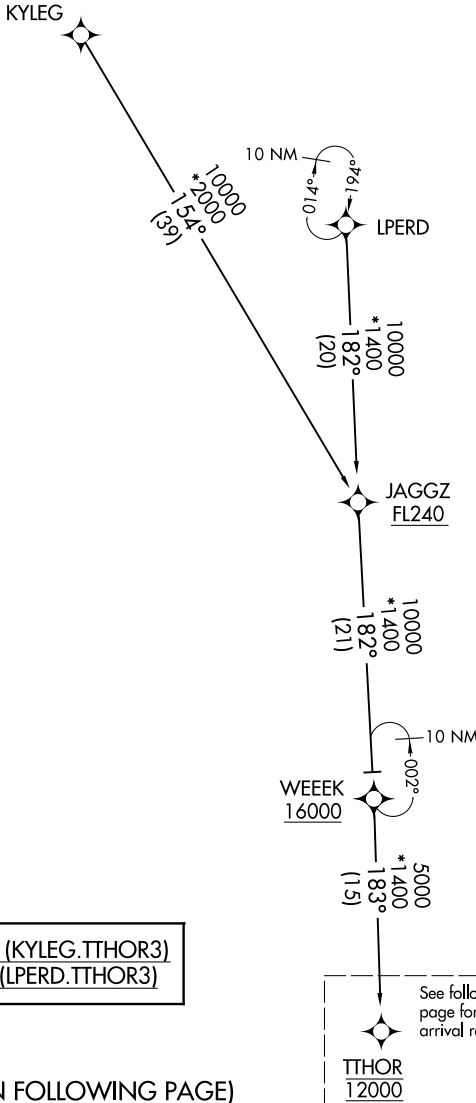
(SHREK.SHREK2) 02DEC21

ORLANDO, FLORIDA

ORLANDO APP CON
 119.775 351.9
 DAYTONA APP CON
 118.85 353.825
 DAB ATIS
 132.875
 EVB ATIS
 124.625
 LEE ATIS
 134.325
 ORL ATIS
 127.25
 OMN ATIS
 118.475
 SFB ATIS
 125.975

RNAV 1 - DME/DME/IRU or GPS.
 RADAR required.

NOTE: Jet and turboprop aircraft only.



KYLEG TRANSITION (KYLEG.TTHOR3)
 LPERD TRANSITION (LPERD.TTHOR3)

See following page for arrival routes.
 TTHOR
 12000

(CONTINUED ON FOLLOWING PAGE)

NOTE: Chart not to scale.

SE-3, 22 FEB 2024 to 21 MAR 2024

SE-3, 22 FEB 2024 to 21 MAR 2024

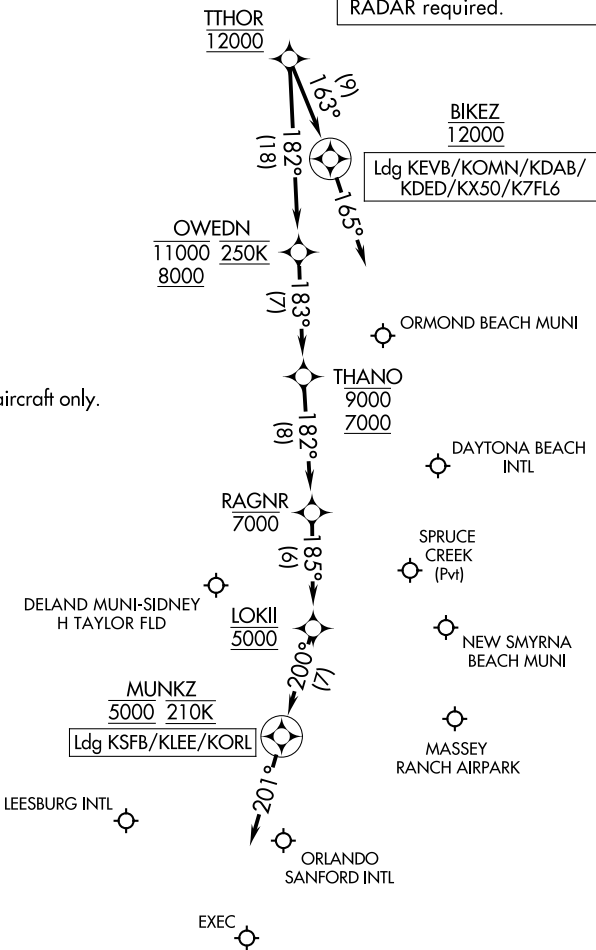
TTHOR THREE ARRIVAL (RNAV) Arrival Routes

ORLANDO, FLORIDA

ORLANDO APP CON
119.775 351.9
DAYTONA APP CON
118.85 353.825
DAB ATIS
132.875
EVB ATIS
124.625
LEE ATIS
134.325
ORL ATIS
127.25
OMN ATIS
118.475
SFB ATIS
125.975

RNAV 1 - DME/DME/IRU or GPS.
RADAR required.

NOTE: Jet and turboprop aircraft only.



NOTE: Chart not to scale.

ARRIVAL ROUTE DESCRIPTION

LANDING KEVB/KOMN/KDAB/KDED/KX50/K7FL6: From TTHOR on track 163° to cross BIKEZ at 12000, then on track 165°. Expect RADAR vectors to final approach course.

LANDING KSF/KLEE/KORL: From TTHOR on track 182° to cross OWEDN between 8000 and 11000 and at 250K, then on track 183° to cross THANO between 7000 and 9000, then on track 182° to cross RAGNR at or below 7000, then on track 185° to cross LOKII at 5000, then on track 200° to cross MUNKZ at 5000 and at 210K, then on track 201°. Expect RADAR vectors to final approach course.

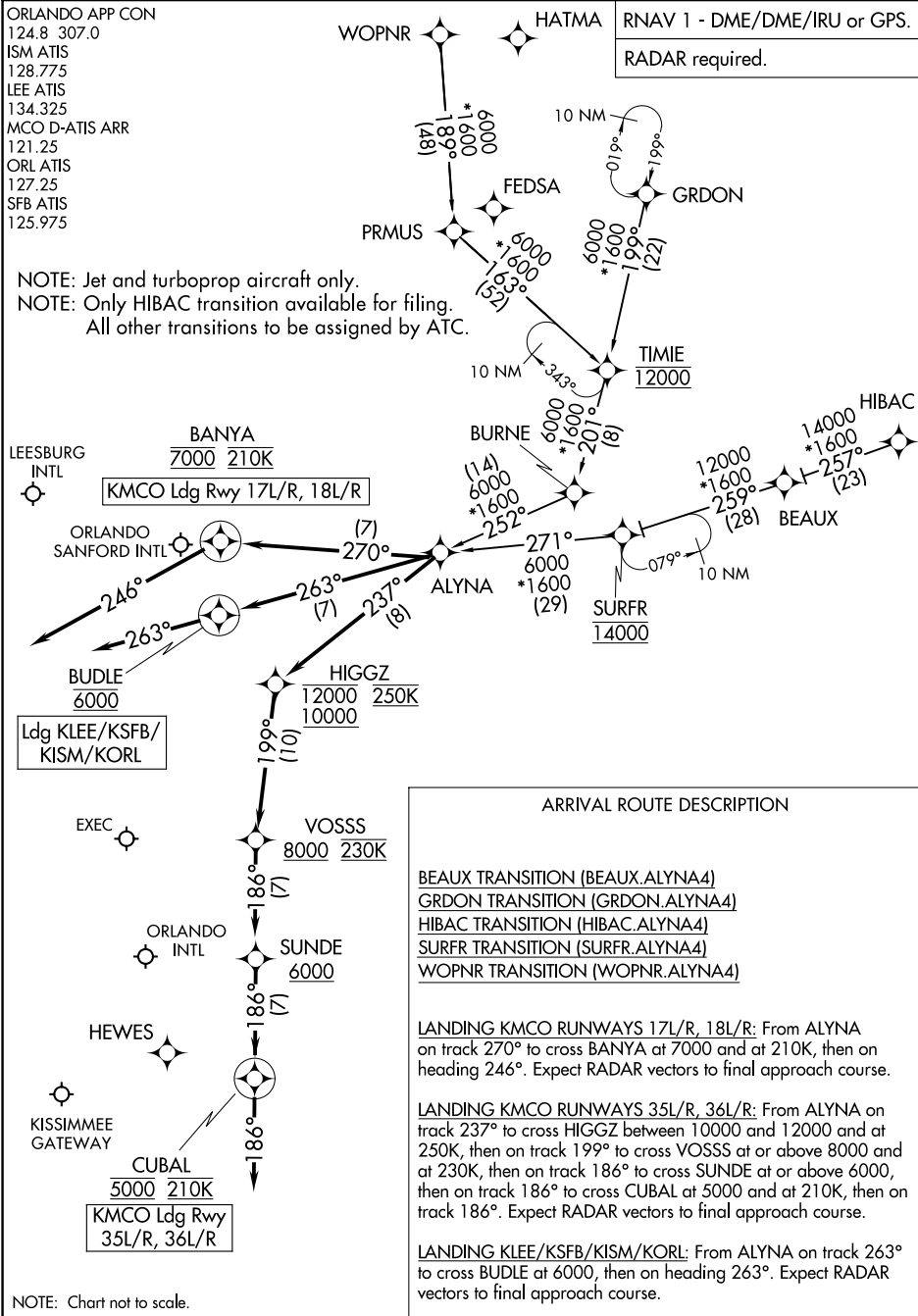
ALYNA FOUR ARRIVAL (RNAV)

ORLANDO, FLORIDA

ORLANDO APP CON
 124.8 307.0
 ISM ATIS
 128.775
 LEE ATIS
 134.325
 MCO D-ATIS ARR
 121.25
 ORL ATIS
 127.25
 SFB ATIS
 125.975

RNAV 1 - DME/DME/IRU or GPS.
 RADAR required.

NOTE: Jet and turboprop aircraft only.
 NOTE: Only HIBAC transition available for filing.
 All other transitions to be assigned by ATC.



ARRIVAL ROUTE DESCRIPTION

- BEAUX TRANSITION (BEAUX.ALYNA4)
- GRDON TRANSITION (GRDON.ALYNA4)
- HIBAC TRANSITION (HIBAC.ALYNA4)
- SURFR TRANSITION (SURFR.ALYNA4)
- WOPNR TRANSITION (WOPNR.ALYNA4)

LANDING KMCO RUNWAYS 17L/R, 18L/R: From ALYNA on track 270° to cross BANYA at 7000 and at 210K, then on heading 246°. Expect RADAR vectors to final approach course.

LANDING KMCO RUNWAYS 35L/R, 36L/R: From ALYNA on track 237° to cross HIGGZ between 10000 and 12000 and at 250K, then on track 199° to cross VOSSS at or above 8000 and at 230K, then on track 186° to cross SUNDE at or above 6000, then on track 186° to cross CUBAL at 5000 and at 210K, then on track 186°. Expect RADAR vectors to final approach course.

LANDING KLEE/KSFB/KISM/KORL: From ALYNA on track 263° to cross BUDLE at 6000, then on heading 263°. Expect RADAR vectors to final approach course.

NOTE: Chart not to scale.

ALYNA FOUR ARRIVAL (RNAV)

(ALYNA.ALYNA4) 25JAN24

ORLANDO, FLORIDA

SE-3, 22 FEB 2024 to 21 MAR 2024

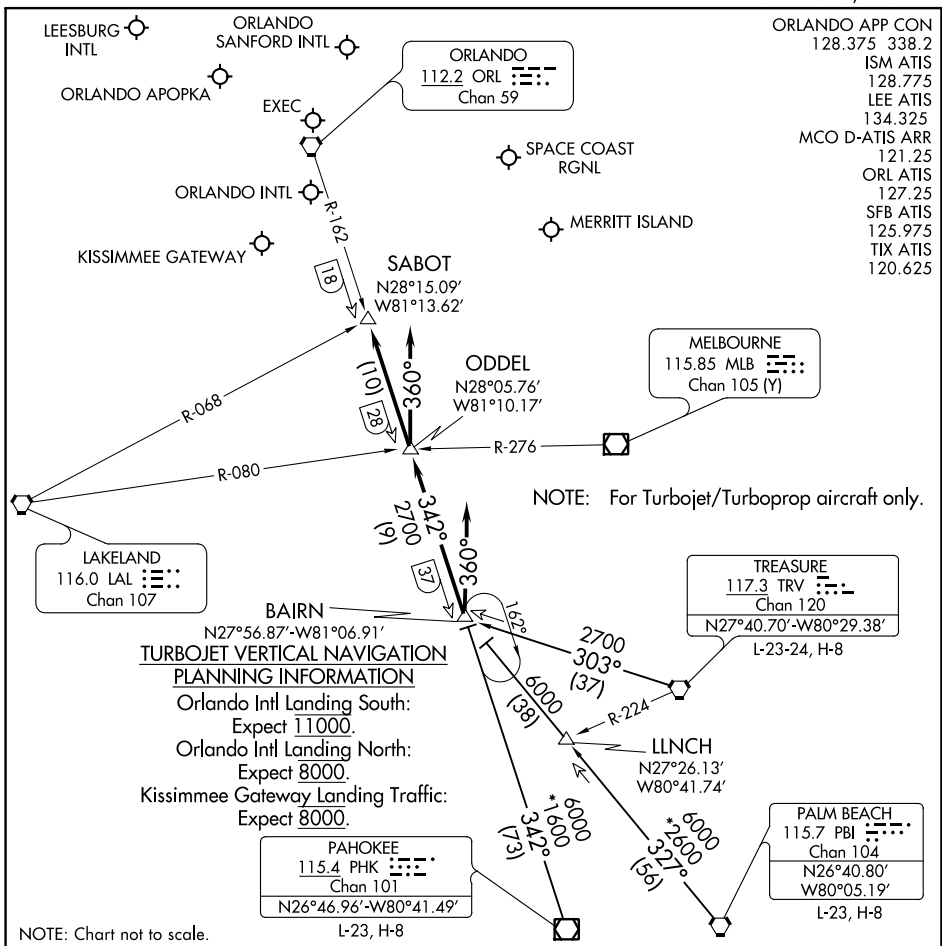
SE-3, 22 FEB 2024 to 21 MAR 2024

(BAIRN.GOOFY7) 23222

AL-571 (FAA)

GOOFY SEVEN ARRIVAL

ORLANDO, FLORIDA



SE-3, 22 FEB 2024 to 21 MAR 2024

SE-3, 22 FEB 2024 to 21 MAR 2024

ARRIVAL ROUTE DESCRIPTION

PAHOKEE TRANSITION (PHK.GOOFY7): From over PHK VOR/DME on PHK R-342 to BAIRN INT.

Thence . . .

PALM BEACH TRANSITION (PBI.GOOFY7): From over PBI VORTAC on PBI R-327 to BAIRN INT.

Thence . . .

TREASURE TRANSITION (TRV.GOOFY7): From over TRV VORTAC on TRV R-303 to BAIRN INT.

Thence . . .

ORLANDO INTL:

. . . Rwy 17/18: From over BAIRN INT on ORL VORTAC R-162 to ODDELE INT. Depart ODDELE INT heading 360° for vector to final approach course.

. . . Rwy 35/36: Depart BAIRN INT heading 360° for vector to final approach course.

LEESBURG INTL: . . . From over BAIRN INT on ORL VORTAC R-162 to SABOT INT. Expect RADAR vectors to the airport.

ALL OTHER AIRPORTS: . . . From over BAIRN INT on ORL VORTAC R-162 to SABOT INT.

Expect RADAR vectors to final approach course.

GOOFY SEVEN ARRIVAL

ORLANDO, FLORIDA

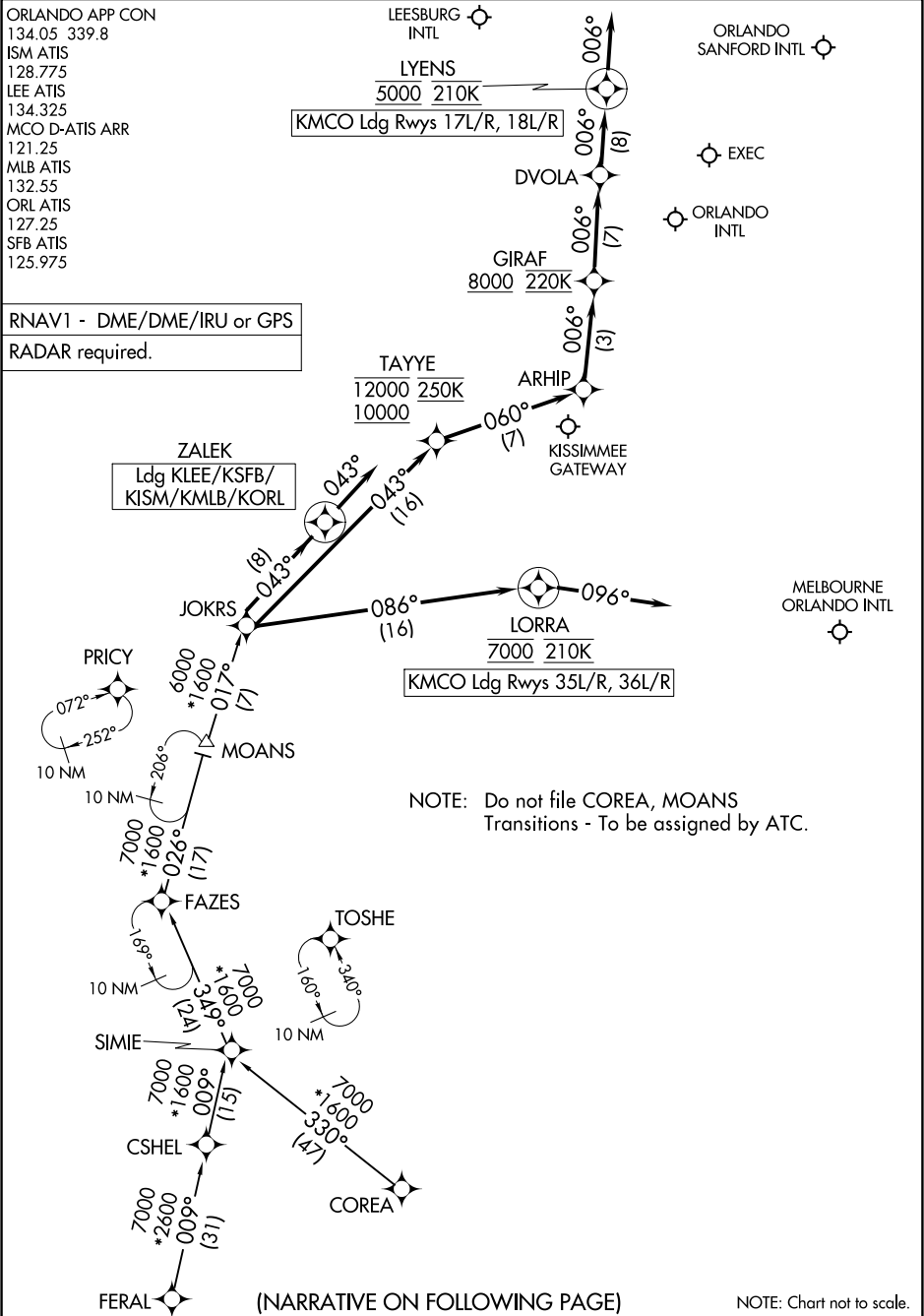
(BAIRN.GOOFY7) 27APR17

JOKRS THREE ARRIVAL (RNAV)

ORLANDO, FLORIDA

ORLANDO APP CON
 134.05 339.8
 ISM ATIS
 128.775
 LEE ATIS
 134.325
 MCO D-ATIS ARR
 121.25
 MLB ATIS
 132.55
 ORL ATIS
 127.25
 SFB ATIS
 125.975

RNAV1 - DME/DME/IRU or GPS
 RADAR required.



SE-3, 22 FEB 2024 to 21 MAR 2024

SE-3, 22 FEB 2024 to 21 MAR 2024

JOKRS THREE ARRIVAL (RNAV)

(JOKRS.JOKRS3) 19MAY22

ORLANDO, FLORIDA

(NARRATIVE ON FOLLOWING PAGE)

NOTE: Chart not to scale.

ARRIVAL ROUTE DESCRIPTION

COREA TRANSITION (COREA.JOKRS3)

CSHEL TRANSITION (CSHEL.JOKRS3)

FAZES TRANSITION (FAZES.JOKRS3)

FERAL TRANSITION (FERAL.JOKRS3)

MOANS TRANSITION (MOANS.JOKRS3)

LANDING KMCO RUNWAYS 17L/R, 18L/R: From JOKRS on track 043° to cross TAYYE between 10000 and 12000 and at 250K, then on track 060° to ARHIP, then on track 006° to cross GIRAF at or above 8000 and at 220K, then on track 006° to DVOLA, then on track 006° to cross LYENS at 5000 and at 210K, then on track 006°. Expect RADAR vectors to final approach course.

LANDING KMCO RUNWAYS 35L/R, 36L/R: From JOKRS on track 086° to cross LORRA at 7000 and at 210K, then on heading 096°. Expect RADAR vectors to final approach course.

LANDING KLEE/KSFB/KISM/KMLB/KORL: From JOKRS on track 043° to ZALEK, then on heading 043°. Expect RADAR vectors to final approach course.

SE-3, 22 FEB 2024 to 21 MAR 2024

SE-3, 22 FEB 2024 to 21 MAR 2024

ORLANDO APP CON
134.05 339.8
ISM ATIS
128.775
LEE ATIS
134.325
MCO D-ATIS ARR
121.25
ORL ATIS
127.25
SFB ATIS
125.975
TIX ATIS
120.625

OCALA
113.7 OCF
Chan 84

ORLANDO
112.2 ORL
Chan 59
N28°32.56'
W81°20.10'

ANDRO
N28°02.95' - W81°53.14'
TURBOJET VERTICAL NAVIGATION PLANNING INFORMATION

Orlando Intl Landing South: Expect clearance to cross at 13,000'.
Orlando Intl Landing North: Expect clearance to cross at 13,000' and 250 KTS.

MOANS
N27°54.83' - W81°44.91'
TURBOJET VERTICAL NAVIGATION PLANNING INFORMATION

Orlando Intl Landing South: Expect clearance to cross at 13,000'.
Orlando Intl Landing North: Expect clearance to cross at 10,000' and 250 KTS.

ST PETERSBURG
116.4 PIE
Chan 111
N27°54.47'
W82°41.06'
L-21-24, H-8

SYKES
N27°39.88'
W83°02.99'

GUMMY
N27°49.59'
W82°31.94'

LAKELAND
116.0 LAL
Chan 107
N27°59.17'
W82°00.83'

MINEE
N28°07.10'
W81°44.67'

DOWNNN
N27°30.65'
W81°45.39'

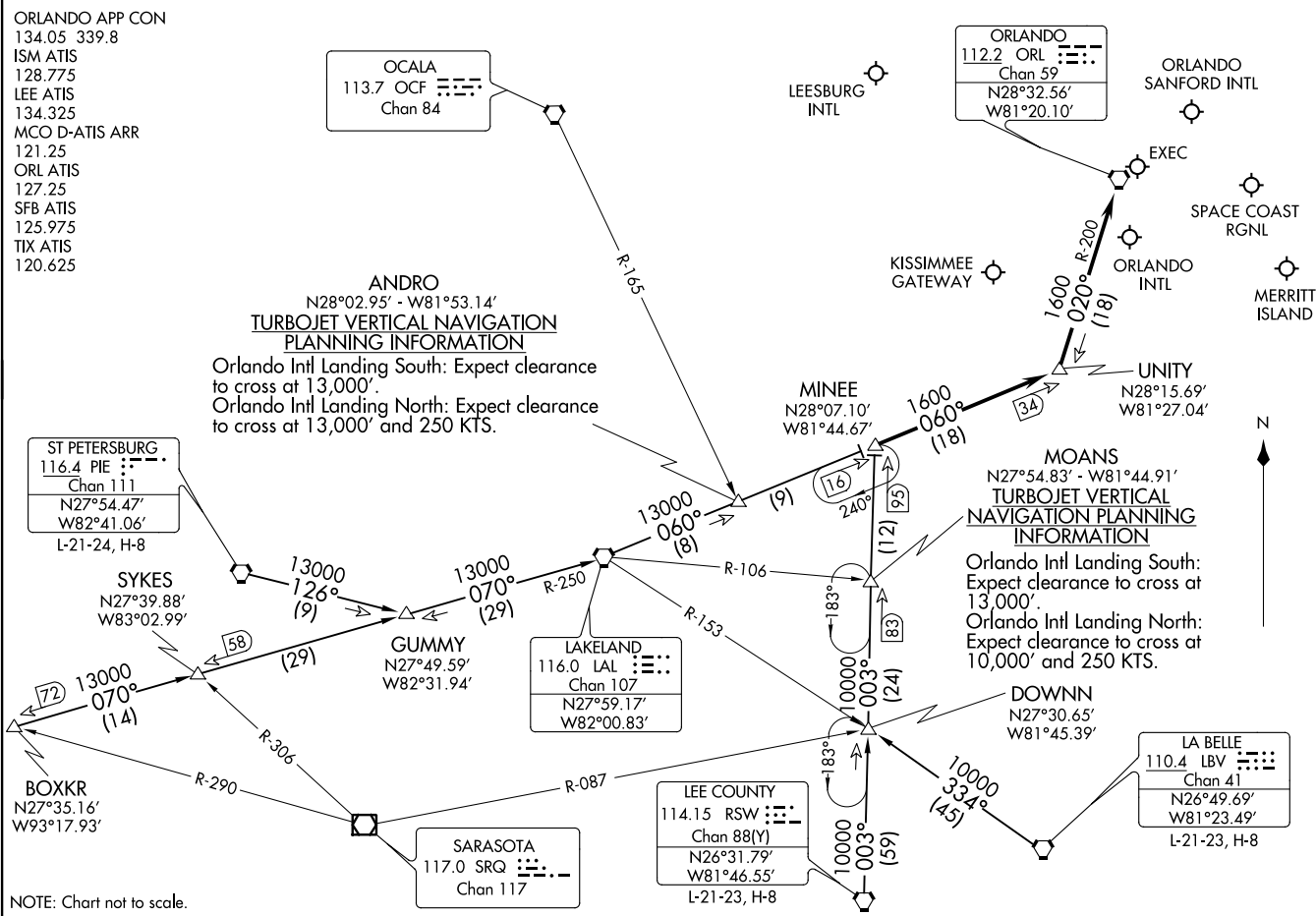
LA BELLE
110.4 LBV
Chan 41
N26°49.69'
W81°23.49'
L-21-23, H-8

BOXKR
N27°35.16'
W93°17.93'

SARASOTA
117.0 SRQ
Chan 117

LEE COUNTY
114.15 RSW
Chan 88(Y)
N26°31.79'
W81°46.55'
L-21-23, H-8

NOTE: Chart not to scale.



ARRIVAL ROUTE DESCRIPTION

BOXKR TRANSITION (BOXKR.MINEE5): From over BOXKR INT via LAL R-250 to LAL VORTAC, then via LAL R-060 to MINEE INT. Thence. . . .

LA BELLE TRANSITION (LBV.MINEE5): From over LBV VORTAC via LBV R-334 to DOWNN INT, then via RSW R-003 to MINEE INT. Thence. . . .

LEE COUNTY TRANSITION (RSW.MINEE5): From over RSW VORTAC via RSW R-003 to MINEE INT. Thence. . . .

ST. PETERSBURG TRANSITION (PIE.MINEE5): From over PIE VORTAC via PIE R-126 to GUMMY INT, then via LAL R-250 to LAL VORTAC, then via LAL R-060 to MINEE INT. Thence. . . .

. . . . From over MINEE INT via LAL R-060 to UNITY INT, then via ORL R-200 to ORL VORTAC.

LEESBURG INTL: Expect radar vectors to airport after UNITY INT.

ALL OTHER AIRPORTS: Expect radar vectors to final approach course after UNITY INT.

SE-3, 22 FEB 2024 to 21 MAR 2024

SE-3, 22 FEB 2024 to 21 MAR 2024

(PRIC3.PRIC3) 03NOV22

PRIC3 THREE ARRIVAL (RNAV) Transition Routes

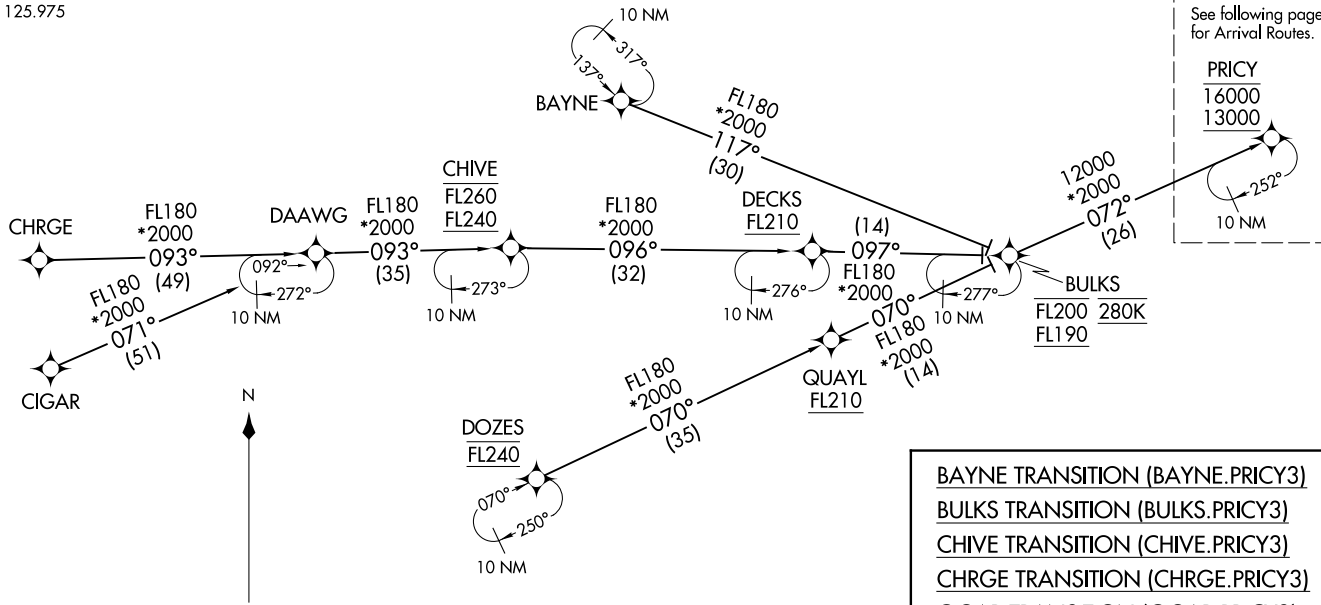
ORLANDO, FLORIDA

ORLANDO APP CON
134.05 339.8
ISM ATIS
128.775
LEE ATIS
134.325
MCO D-ATIS ARR
121.25
MLB ATIS
132.55
ORL ATIS
127.25
SFB ATIS
125.975

NOTE: Jet aircraft only.
NOTE: Do not file BULKS, CHIVE or DOZES Transitions - to be assigned by ATC.
NOTE: For vertical navigation planning, landing south, select Rwy 18R, landing north, select Rwy 36L.

RNAV 1 - DME/DME/IRU or GPS.
CHRG Transition, RNAV 1-GPS.
CIGAR Transition, RNAV 1-GPS.

RADAR required.



NOTE: Chart not to scale.

(CONTINUED ON FOLLOWING PAGE)

BAYNE TRANSITION (BAYNE.PRIC3)
BULKS TRANSITION (BULKS.PRIC3)
CHIVE TRANSITION (CHIVE.PRIC3)
CHRG TRANSITION (CHRG.PRIC3)
CIGAR TRANSITION (CIGAR.PRIC3)
DOZES TRANSITION (DOZES.PRIC3)

(PRIC3.PRIC3) 22307

AL-571 (FAA)
PRIC3 THREE ARRIVAL (RNAV) Transition Routes

ORLANDO, FLORIDA

PRICY THREE ARRIVAL (RNAV) Arrival Routes

ORLANDO, FLORIDA

ORLANDO APP CON
 134.05 339.8
 ISM ATIS
 128.775
 LEE ATIS
 134.325
 MCO D-ATIS ARR
 121.25
 MLB ATIS
 132.55
 ORL ATIS
 127.25
 SFB ATIS
 125.975

LEESBURG INTL

LYENS
5000 210K

Ldg KMCO Rwys 17L/R, 18L/R

ORLANDO SANFORD INTL

HAMMY

EXEC

DVOLA

RNAV 1 - DME/DME/IRU or GPS.
 RADAR required.

GIRAF
8000 220K

ORLANDO INTL

NOTE: Jet aircraft only.

NOTE: For vertical navigation planning, landing south, select Rwy 18R, landing north, select Rwy 36L.

ARHIP

KISSIMMEE GATEWAY

OTKEE
11000 250K

Ldg KLEE/KSFB/KISM/KORL/KMLB

TAYYE
12000 250K
10000

EXBAN

MELBOURNE ORLANDO INTL

PRICY
16000
13000

BOCCCE

JUMBA

AMADS
9000

LORRA
7000 210K

Ldg KMCO Rwys 35L/R, 36L/R

10 NM

10 NM

10 NM

10 NM

NOTE: Chart not to scale.

(NARRATIVE ON FOLLOWING PAGE)

PRICY THREE ARRIVAL (RNAV) Arrival Routes

ORLANDO, FLORIDA

ARRIVAL ROUTE DESCRIPTION

KMCO: From PRICY on track 071° to BOCCE, then on track 068° to JUMBA.

LANDING KMCO RUNWAYS 17L/R, 18L/R: From JUMBA on track 068° to cross TAYYE between 10000 and 12000 and at 250K, then on track 060° to ARHIP, then on track 006° to cross GIRAF at or above 8000 and at 220K, then on track 006° to DVOLA, then on track 006° to cross LYENS at 5000 and at 210K, then on track 006°. Expect RADAR vectors to final approach course.

LANDING KMCO RUNWAYS 35L/R, 36L/R: From JUMBA on track 104° to cross AMADS at or below 9000, then on track 104° to cross LORRA at 7000 and at 210K, then on heading 096°. Expect RADAR vectors to final approach course.

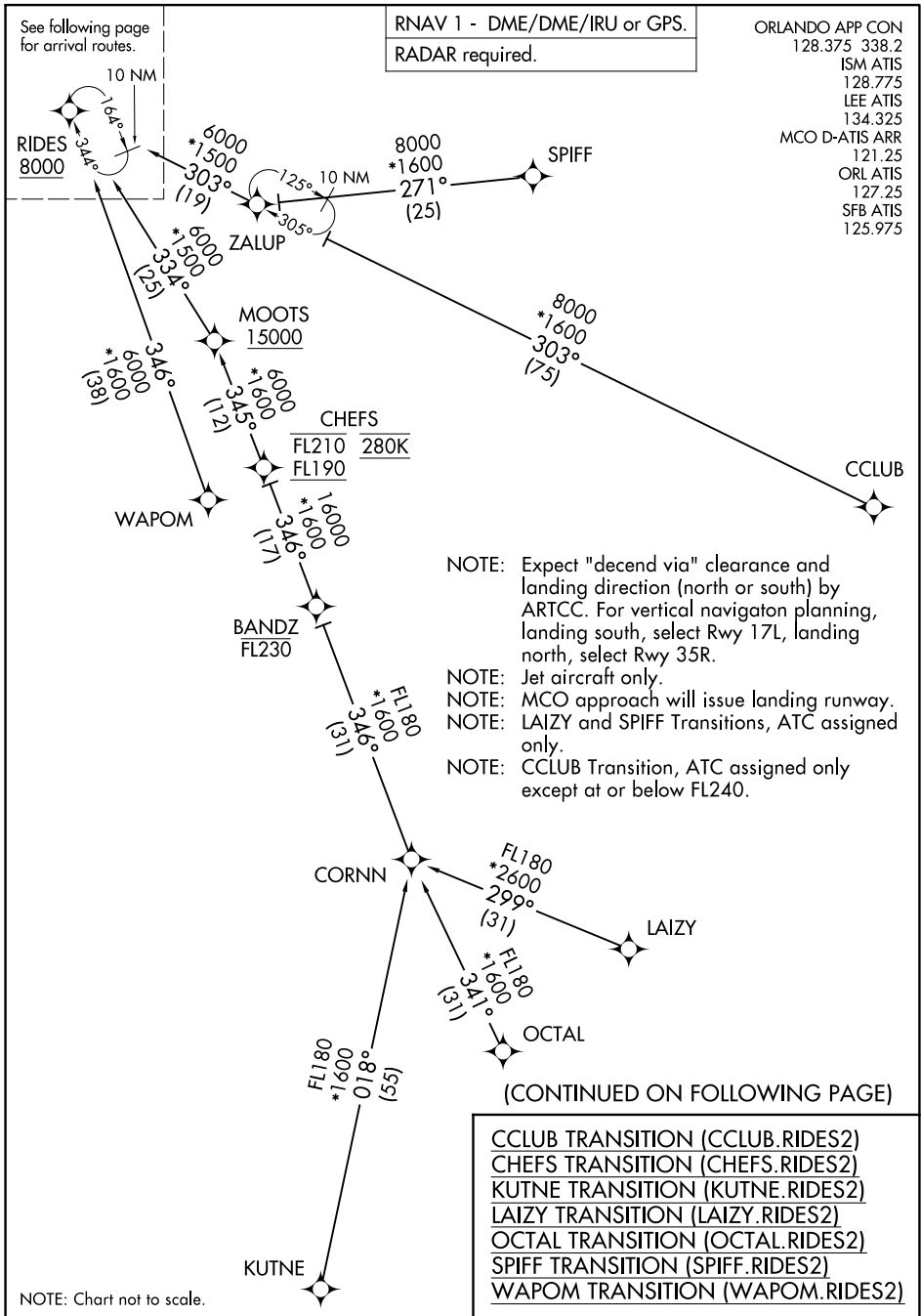
LANDING KLEE/KSFB/KISM/KMLB/KORL: From PRICY on track 071° to BOCCE, then on track 056° to cross OTKEE at 11000 and at 250K, then on track 056°. Expect RADAR vectors to final approach course.

SE-3, 22 FEB 2024 to 21 MAR 2024

SE-3, 22 FEB 2024 to 21 MAR 2024

RIDES TWO ARRIVAL (RNAV) Transition Routes

ORLANDO, FLORIDA



SE-3, 22 FEB 2024 to 21 MAR 2024

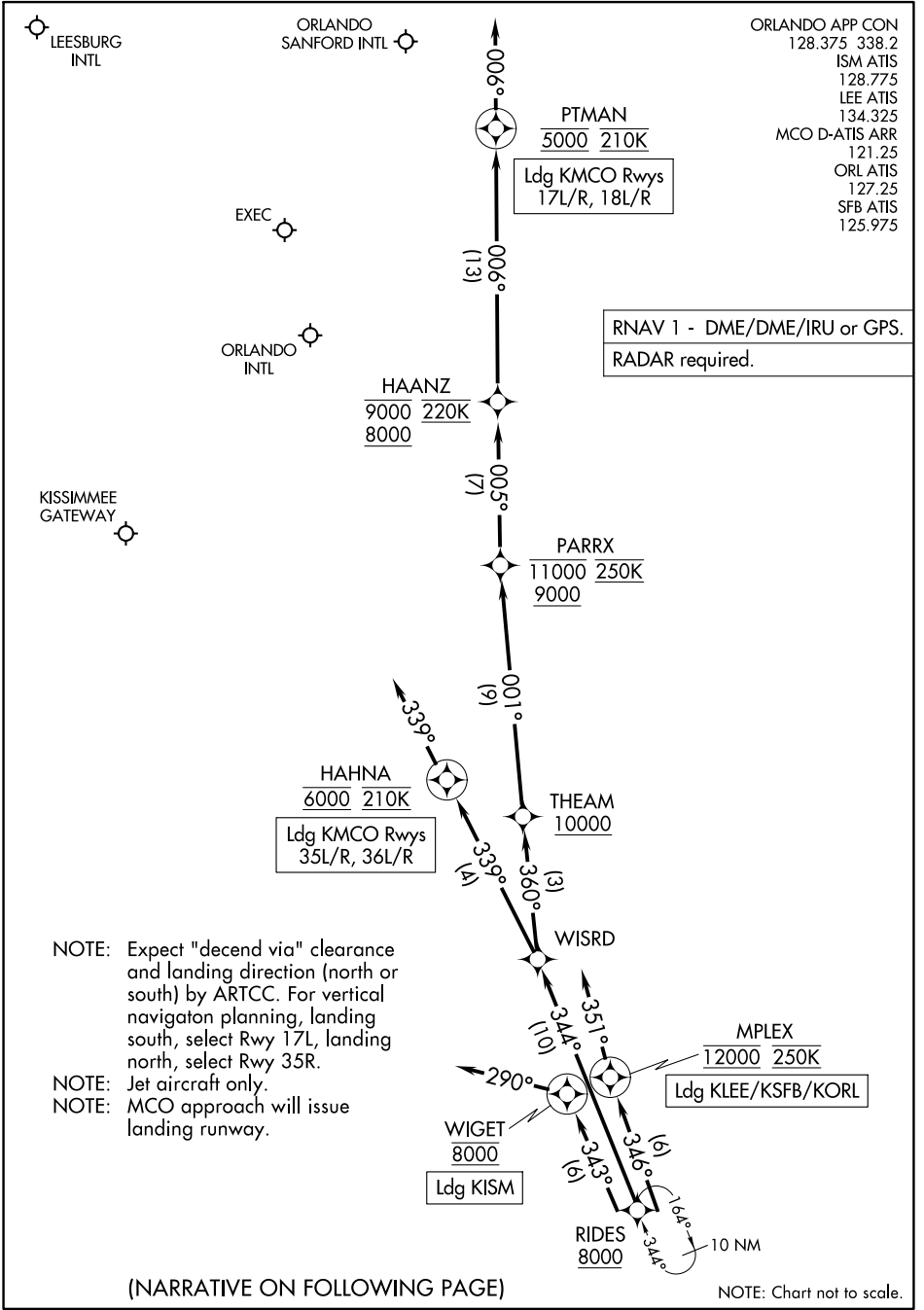
SE-3, 22 FEB 2024 to 21 MAR 2024

RIDES TWO ARRIVAL (RNAV) Transition Routes

ORLANDO, FLORIDA

RIDES TWO ARRIVAL (RNAV) Arrival Routes

ORLANDO, FLORIDA



SE-3, 22 FEB 2024 to 21 MAR 2024

SE-3, 22 FEB 2024 to 21 MAR 2024

ARRIVAL ROUTE DESCRIPTION

KMCO: From RIDES on track 344° to WISRD.

LANDING KMCO RUNWAYS 17L/R, 18L/R: From WISRD on track 360° to cross THEAM at or above 10000, then on track 001° to cross PARRX between 9000 and 11000 and at 250K, then on track 005° to cross HAANZ between 8000 and 9000 and at 220K, then on track 006° to cross PTMAN at 5000 and at 210K, then on track 006°. Expect RADAR vectors to final approach course.

LANDING KMCO RUNWAYS 35L/R, 36L/R: From WISRD on track 339° to cross HAHNA at 6000 and at 210K, then on track 339°. Expect ILS or RNAV Rwy 35R approach or RADAR vectors to final approach course.

LANDING KISM: From RIDES on track 343° to cross WIGET at 8000, then on heading 290°. Expect RADAR vectors to final approach course.

LANDING KLEE/KSFB/KORL: From RIDES on track 346° to cross MPLEX at 12000 and at 250K, then on heading 351°. Expect RADAR vectors to final approach course.

SE-3, 22 FEB 2024 to 21 MAR 2024

SE-3, 22 FEB 2024 to 21 MAR 2024