

WAAS CH <b>77934</b> <b>W10A</b>	APP CRS <b>099°</b>	Rwy Idg TDZE Apt Elev	<b>5013</b> <b>1043</b> <b>1044</b>
----------------------------------------	------------------------	-----------------------------	-------------------------------------------

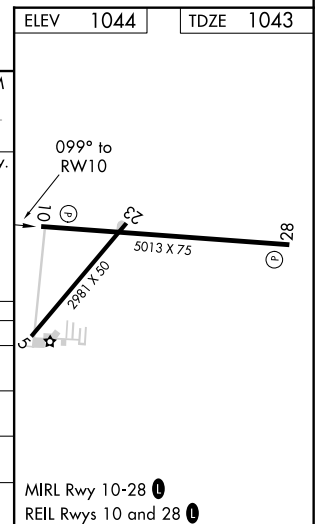
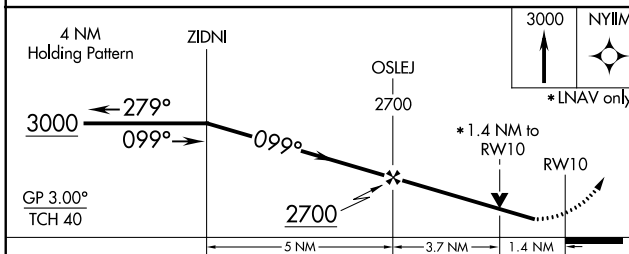
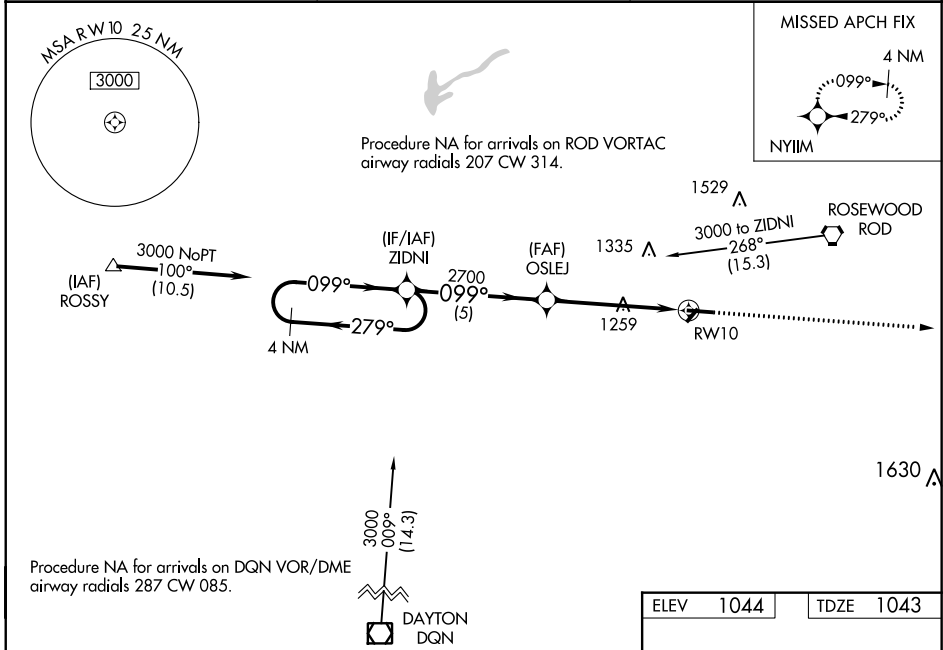
# RNAV (GPS) RWY 10

SIDNEY MUNI (SCA)

**⚠** For uncompensated Baro-VNAV systems, LNAV/VNAV NA below -22°C (-7°F) or above 54°C (130°F). DME/DME RNP-0.3 NA. Helicopter visibility reduction below ¼ SM NA. Baro-VNAV and VDP NA when using James M Cox Dayton Intl altimeter setting. Night Landing: Rwy 28 operational VGSI required, remain on or above VGSI glidepath until threshold. When local altimeter setting not received, use James M Cox Dayton Intl altimeter setting and increase all DA 53 feet and all MDA 60 feet; increase LPV all Cats and LNAV Cats C/D visibility ⅛ mile and Circling Cat C visibility ¼ mile.

**MISSED APPROACH:** Climb to 3000 direct NYIIM and hold.

AWOS-3 <b>120.425</b>	COLUMBUS APP CON <b>118.425 294.5</b>	UNICOM <b>123.05 (CTAF)</b>
--------------------------	------------------------------------------	--------------------------------



CATEGORY	A	B	C	D
LPV DA		1308-1	265 (300-1)	
LNAV/VNAV DA		1293-1	250 (300-1)	
LNAV MDA	1520-1	477 (500-1)	1520-1⅓	477 (500-1⅓)
<b>C</b> CIRCLING	1520-1	476 (500-1)	1640-1½ 596 (600-1½)	1640-2 596 (600-2)

EC-2, 02 DEC 2021 to 30 DEC 2021

EC-2, 02 DEC 2021 to 30 DEC 2021

WAAS CH <b>82234</b>	APP CRS <b>279°</b>	Rwy Idg TDZE Apt Elev	<b>5013</b> <b>1044</b> <b>1044</b>
-------------------------	------------------------	-----------------------------	-------------------------------------------

# RNAV (GPS) RWY 28

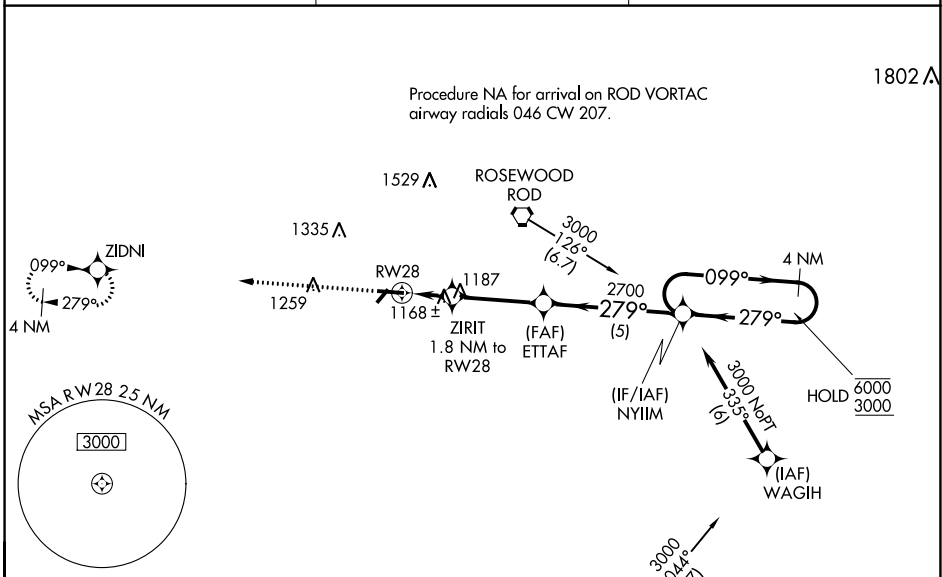
SIDNEY MUNI (SCA)

RNP APCH.

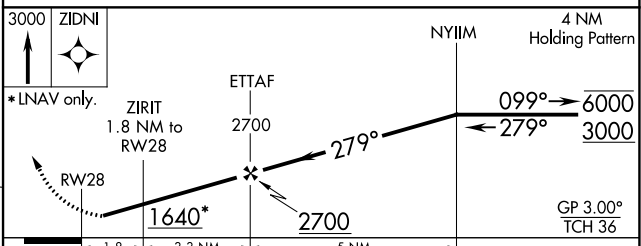
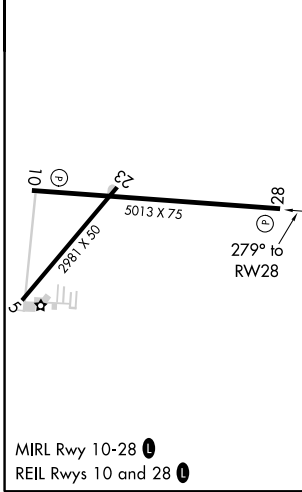
**⚠** Rwy 28 helicopter visibility reduction below 1 SM NA. Baro-VNAV NA when using James M. Cox Dayton Intl altimeter setting. For uncompensated Baro-VNAV systems, LNAV/VNAV NA below -22°C or above 54°C. When local altimeter setting not received, use James M. Cox Dayton Intl altimeter setting: increase LPV DA to 1355; increase LNAV/VNAV DA to 1365; increase all MDA 60 feet and LNAV Cat C visibility and Circling Cat C visibility ¼ SM. Straight-in Rwy 28 at night, operational VGSI required, remain at or above VGSI glidepath until threshold.

**MISSED APPROACH:**  
Climb to 3000  
direct ZIDNI and hold.

AWOS-3 <b>120.425</b>	COLUMBUS APP CON <b>118.425 294.5</b>	UNICOM <b>123.05</b> (CTAF) <b>📻</b>
--------------------------	------------------------------------------	-----------------------------------------



ELEV 1044	TDZE 1044
-----------	-----------



CATEGORY	A	B	C	D
LPV DA		1302-1	258 (300-1)	NA
LNAV/VNAV DA		1312-1	268 (300-1)	NA
LNAV MDA		1420-1	376 (400-1)	NA
<b>C</b> CIRCLING	1460-1 416 (500-1)	1520-1 476 (500-1)	1640-1½ 596 (600-1½)	NA

SIDNEY, OHIO  
Amdt 1A 13SEP18

40°14'N-84°09'W

# RNAV (GPS) RWY 28

EC-2, 02 DEC 2021 to 30 DEC 2021

EC-2, 02 DEC 2021 to 30 DEC 2021

VORTAC ROD <b>117.5</b> Chan <b>122</b>	APP CRS <b>245°</b>	Rwy Idg TDZE Apt Elev	<b>N/A</b> <b>N/A</b> <b>1044</b>
-----------------------------------------------	------------------------	-----------------------------	-----------------------------------------

**VOR-A**  
SIDNEY MUNI (SCA)

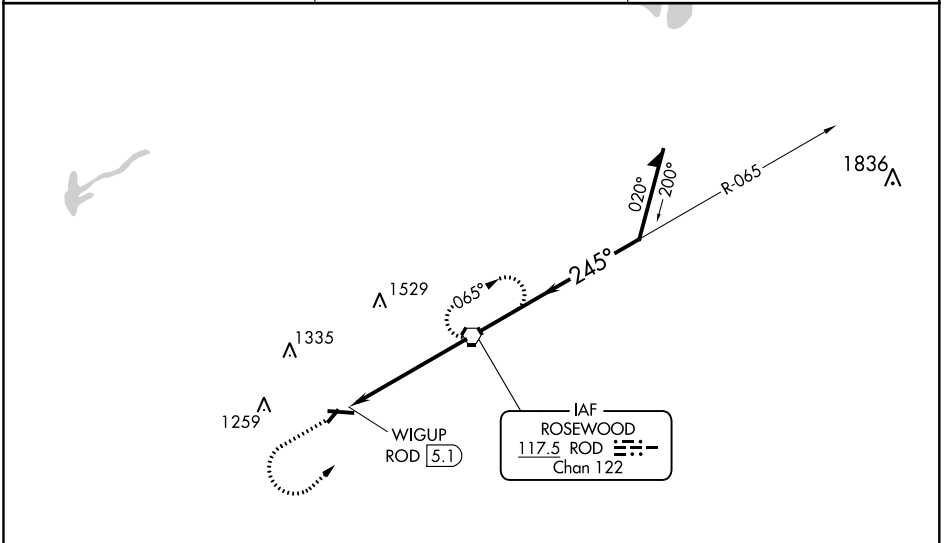
**NA** When local altimeter setting not received, use James M Cox Dayton Intl altimeter setting and increase all MDAs 60 feet and increase Cat C visibility ¼ mile. Night Landing: Rwy 28 operational VGSI required, remain on or above VGSI glidepath until threshold. Helicopter visibility reduction below 1 SM NA.

**MISSED APPROACH:** Climb to 3000 then left turn direct ROD VORTAC and hold.

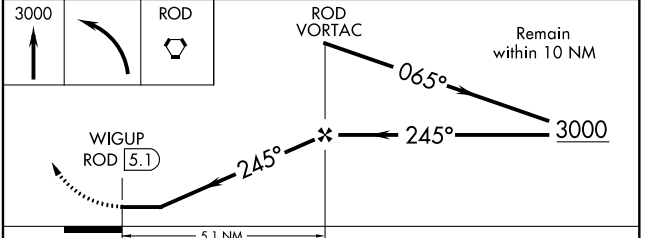
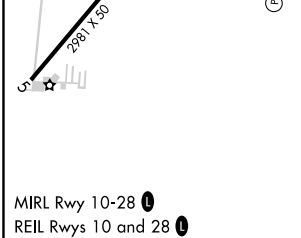
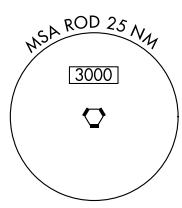
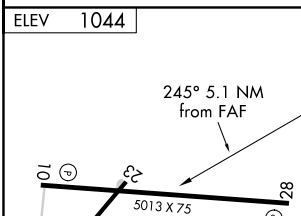
AWOS-3  
**120.425**

COLUMBUS APP CON  
**118.425 294.5**

UNICOM  
**123.05 (CTAF)**



NoPT for arrivals on ROD Vortac airway radials 314 CW 088.



MIRL Rwy 10-28  
REIL Rwy 10 and 28

FAF to MAP 5.1 NM					
Knots	60	90	120	150	180
Min:Sec	5:06	3:24	2:33	2:02	1:42

CATEGORY	A	B	C	D
<b>CIRCLING</b>	1540-1	496 (500-1)	1640-1½ 596 (600-1½)	1640-2 596 (600-2)

EC-2, 02 DEC 2021 to 30 DEC 2021

EC-2, 02 DEC 2021 to 30 DEC 2021