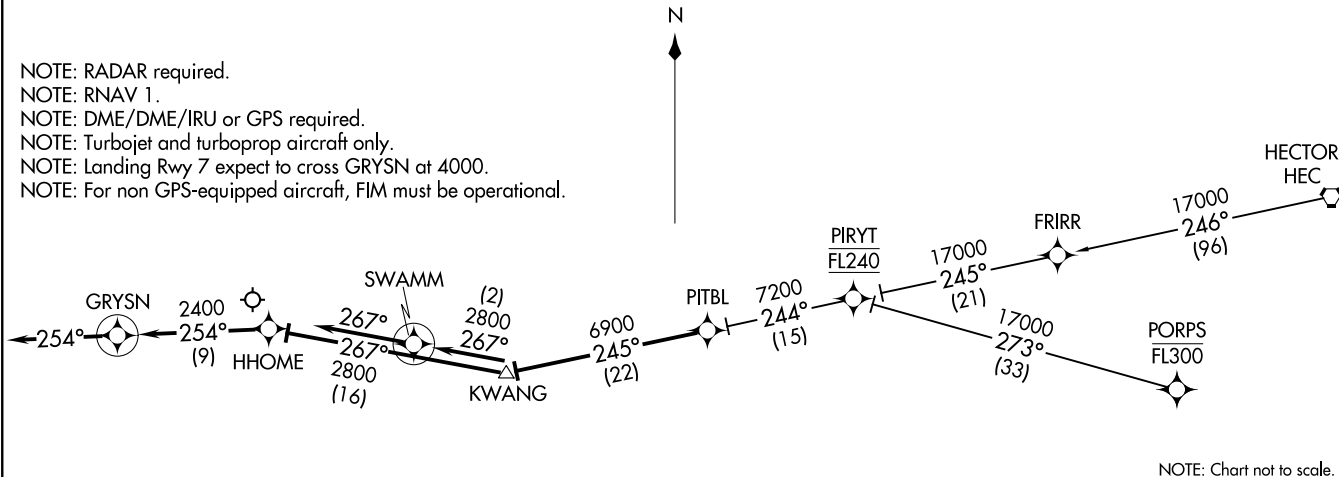


PITBL ONE ARRIVAL (RNAV)
(PITBL.PITBL1) 10NOV16

SANTA BARBARA APP CON
120.55 319.15
ATIS
132.65

NOTE: RADAR required.
NOTE: RNAV 1.
NOTE: DME/DME/IRU or GPS required.
NOTE: Turbojet and turboprop aircraft only.
NOTE: Landing Rwy 7 expect to cross GRYSN at 4000.
NOTE: For non GPS-equipped aircraft, FIM must be operational.



(PITBL.PITBL1) 16315
PITBL ONE ARRIVAL (RNAV)

AL-378 (FAA)

ARRIVAL ROUTE DESCRIPTION

HECTOR TRANSITION (HEC.PITBL1)

PORPS TRANSITION (PORPS.PITBL1)

LANDING RUNWAY 7: From PITBL on track 245° to KWANG, then on track 267° to HHOME, then on track 254° to GRYSN, then on track 254°. Expect RADAR vectors to final approach course.

LANDING RUNWAY 25: From PITBL on track 245° to KWANG, then on track 267° to SWAMM, then on track 267°. Expect RADAR vectors to final approach course.

SANTA BARBARA, CALIFORNIA
SANTA BARBARA MUNI (SBA)

SANTA BARBARA MUNI (SBA)
SANTA BARBARA, CALIFORNIA