

LOC/DME I-SBA	APP CRS	Rwy Idg	6052
110.3	075°	TDZE	13
Chan 40		Apt Elev	13

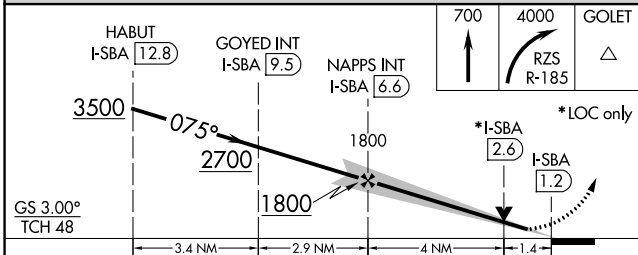
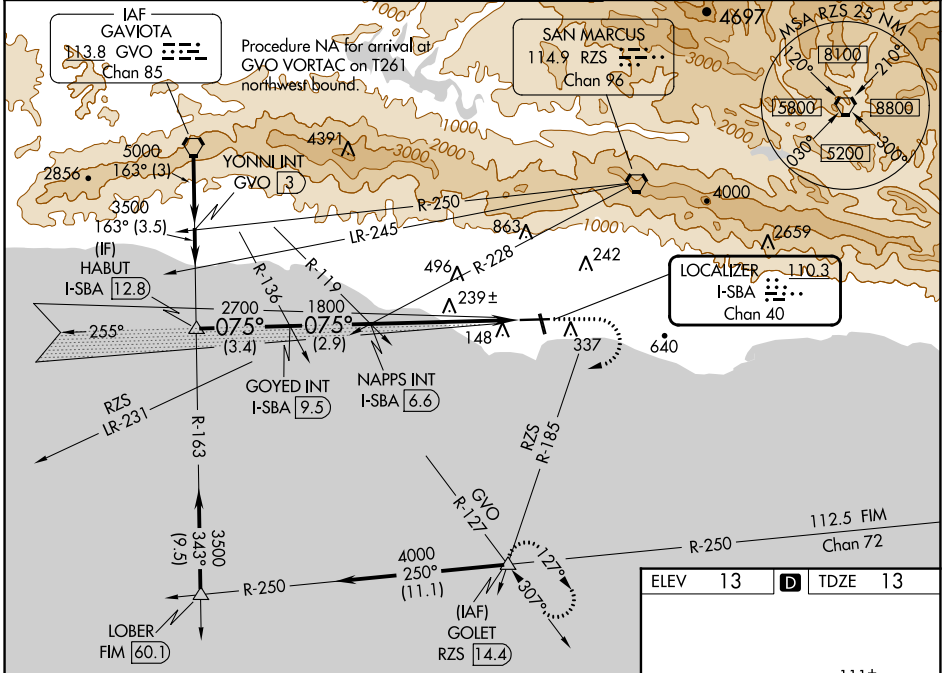
ILS or LOC RWY 7

SANTA BARBARA MUNI (SBA)

⚠ Circling Rwy 15R NA at night. VDP NA when using Oxnard altimeter setting. When local altimeter setting not received, use Oxnard altimeter setting and increase all DA/MDA 100 feet, and S-LOC Cat C visibility to RVR 5000, Cat D visibility to RVR 6000. Increase Circling Cat A visibility ¼ mile, Cat C visibility ½ mile. For inop ALS when using Oxnard altimeter setting, increase S-ILS 7 all Cats visibility to RVR 5000. Circling NA for Cats C and D north of Rwy 7-25.
 # RVR 1800 authorized with use of FD or AP or HUD to DA (NA when using Oxnard altimeter setting).

MISSED APPROACH:
 Climb to 700 then climbing right turn to 4000 on RZS VORTAC R-185 to GOLET INT/RZS 14.4 DME and hold, continue climb-in-hold to 4000.

ATIS	SANTA BARBARA APP CON*	SANTA BARBARA TOWER*	GND CON	CLNC DEL	UNICOM
132.65	120.55 319.15 (151°-329°) 125.4 291.1 (330°-150°)	119.7 (CTAF) 254.35	121.7	132.9	122.95



ELEV 13	TDZE 13
HIRL Rwy 7-25 MIRL Rwy 15R-33L REIL Rwy 15R REIL Rwy 25	
FAF to MAP 5.4 NM	
Knots	60 90 120 150 180
Min:Sec	5:24 3:36 2:42 2:10 1:48

SW-3, 22 FEB 2024 to 21 MAR 2024

SW-3, 22 FEB 2024 to 21 MAR 2024


WAAS CH 78306 W07A	APP CRS 074°	Rwy Idg TDZE Apt Elev	6052 13 14
--	------------------------	-----------------------------	---------------------------------------

RNAV (GPS) RWY 7

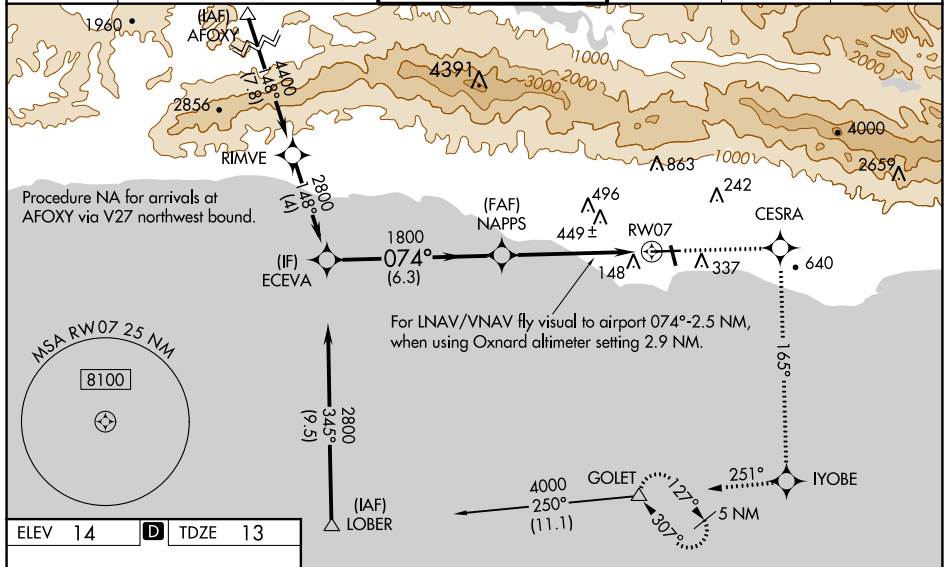
SANTA BARBARA MUNI (SBA)

RNP APCH-GPS.

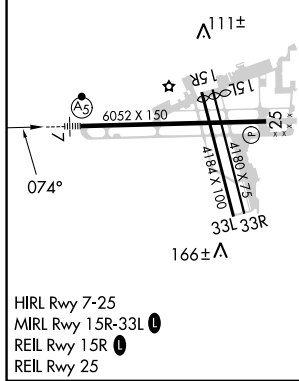
⚠ Inop table does not apply to LNAV/VNAV. For inop MALSR when using Oxnard altimeter setting, increase LPV all Cats visibility to 1½, and LNAV Cat C to 1¾, Cat D to 2. For inop MALSR, increase LPV all Cats visibility to RVR 6000. For uncompensated Baro-VNAV systems, LNAV/VNAV NA below -15°C or above 49°C. Baro-VNAV NA when using Oxnard altimeter setting. When local altimeter setting not received, use Oxnard altimeter setting and increase all DAs/MDAs 100 feet, and increase, LNAV/VNAV visibility Cat C and D ½ mile, LNAV Cat C to RVR 6000, Cat D ¼ mile, Circling Cat A visibility ½ mile, Cat C visibility ½ mile. VDP NA when using Oxnard altimeter setting. Circling Rwy 15R NA at night. Circling NA for Cats C and D north of Rwy 7-25.

MALSR
 MISSED APPROACH: Climb to 4000 direct CESRA and right turn via 165° track to IYOBE and right turn via 251° track to GOLET and hold, continue climb-in-hold to 4000.

ATIS 132.65	SANTA BARBARA APP CON* 120.55 319.15 (151°-329°) 125.4 291.1 (330°-150°)	SANTA BARBARA TOWER* 119.7 (CTAF) 0 254.35	GND CON 121.7	CLNC DEL 132.9	UNICOM 122.95
-----------------------	--	---	-------------------------	--------------------------	-------------------------



ELEV 14	D	TDZE 13
---------	----------	---------



CATEGORY	Procedure Turn NA			
	A	B	C	D
LPV DA	380/40 367 (400-¾)			
LNAV/VNAV DA	866-2	853 (900-2)	866-2½ 853 (900-2½)	866-2¾ 853 (900-2¾)
LNAV MDA	560/24	547 (600-½)	560/50 547 (600-1)	560/60 547 (600-1¼)
CIRCLING	800-1	800-1¼	800-2¼	1000-3
	786 (800-1)	786 (800-1¼)	786 (800-2¼)	986 (1000-3)

SW-3, 22 FEB 2024 to 21 MAR 2024

SW-3, 22 FEB 2024 to 21 MAR 2024

VORTAC GVO	APP CRS	Rwy Idg	6052
113.8	279°	TDZE	10
Chan 85		Apt Elev	10

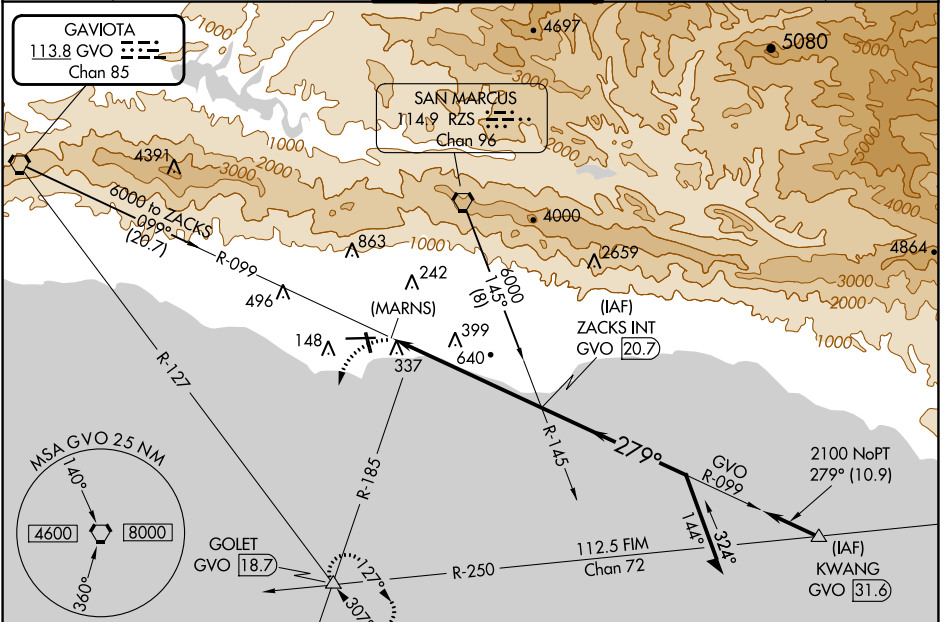
VOR or GPS RWY 25

SANTA BARBARA MUNI (SBA)

⚠ Helicopter visibility reduction below 3/4 SM NA. When local altimeter not received, use Oxnard altimeter setting and increase all MDA 100 feet and all Cats B and C visibility 1/4 mile. Circling Rwy 15R NA at night. Circling NA for Cats C and D north of Rwy 7-25.

MISSED APPROACH: Climbing left turn to 4000 via heading 205° and GVO R-127 to GOLET Int and hold.

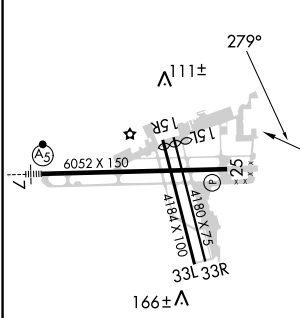
ATIS 132.65	SANTA BARBARA APP CON * 120.55 319.15 (151°-329°) 125.4 291.1 (330°-150°)	SANTA BARBARA TOWER * 119.7 (CTAF) 254.35	GND CON 121.7	CLNC DEL 132.9	UNICOM 122.95
-----------------------	---	--	-------------------------	--------------------------	-------------------------



SW-3, 22 FEB 2024 to 21 MAR 2024

SW-3, 22 FEB 2024 to 21 MAR 2024

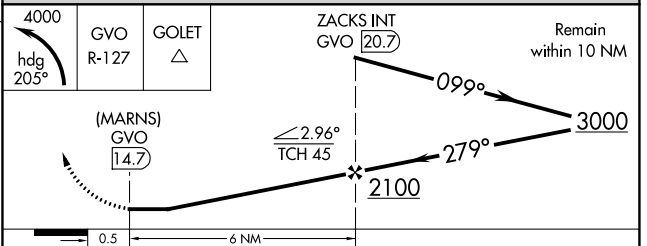
ELEV 10	D	TDZE 10
---------	----------	---------



HIRL Rwy 7-25
MIRL Rwy 15R-33L
REIL Rwy 15R
REIL Rwy 25

FAF to MAP 6 NM

Knots	60	90	120	150	180
Min:Sec	6:00	4:00	3:00	2:24	2:00



CATEGORY	A	B	C	D
S-25	920-1 1/4 910 (1000-1 1/4)		920-2 3/4 910 (1000-2 3/4)	920-3 910 (1000-3)
CIRCLING	920-1 1/4 910 (1000-1 1/4)		920-2 3/4 910 (1000-2 3/4)	960-3 950 (1000-3)