

LOC I- VI 111.1	APP CRS 058°	Rwy Idg 5500 TDZE 2402 Apt Elev 2419
----------------------------------	------------------------	--

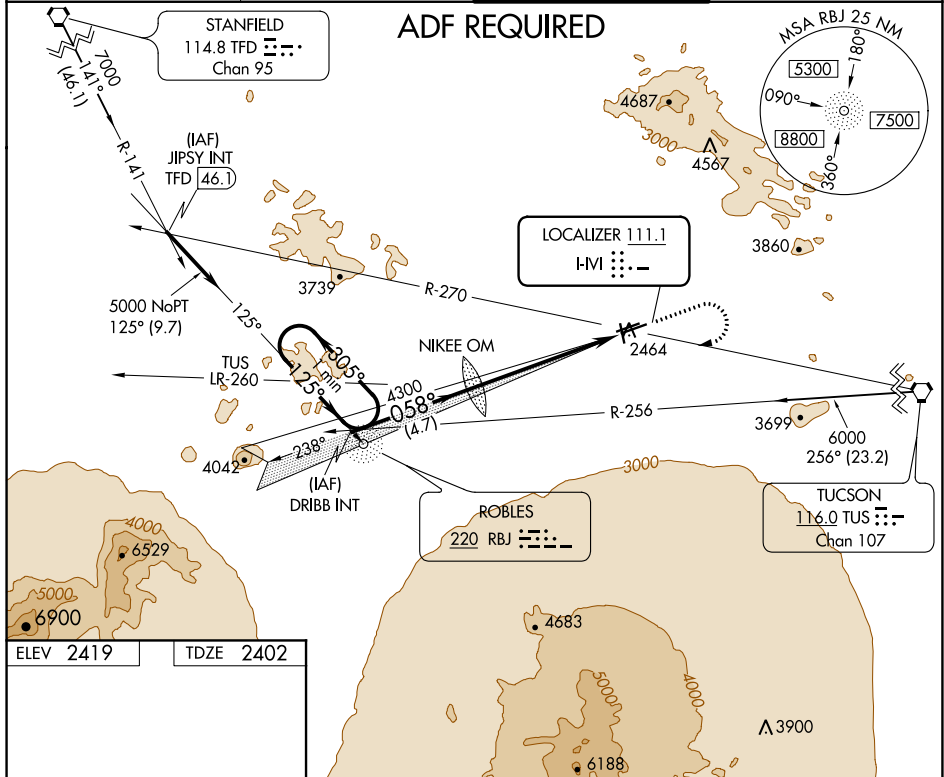
ILS or LOC RWY 6R

RYAN FIELD (RYN)

NA Circling NA for Cat D north of Rwy 24R and east of Rwy 15.

MISSED APPROACH: Climb to 3000, then climbing right turn to 5000 via direct RBJ NDB and 305° bearing RBJ to DRIBB INT and hold.

AWOS-3 133.35	TUCSON APP CON 128.5 273.6	RYAN TOWER ★ 125.8 (CTAF)	GND CON 118.2
-------------------------	--------------------------------------	-------------------------------------	-------------------------



SW-4, 25 FEB 2021 to 25 MAR 2021

SW-4, 25 FEB 2021 to 25 MAR 2021

ELEV 2419	TDZE 2402
-----------	-----------

MIRL Rwy 6L-24R
REIL Rwys 6R and 6L
MIRL Rwys 6R-24L and 15-33

FAF to MAP 5.1 NM

Knots	60	90	120	150	180
Min:Sec	5:06	3:24	2:33	2:02	1:42

One Minute Holding Pattern	DRIBB INT	3000	5000	RBJ	RBJ 305°	DRIBB INT
----------------------------	-----------	------	------	-----	----------	-----------

CATEGORY	A	B	C	D
S-ILS 6R	2652-1 250 (300-1)			
S-LOC 6R	2900-1	498 (500-1)	2900-1¼ 498 (500-1¼)	2900-1½ 498 (500-1½)
<input checked="" type="checkbox"/> CIRCLING	2960-1	541 (600-1)	3040-1¾ 621 (700-1¾)	3320-3 901 (1000-3)

NDB RYN 338	APP CRS 074°	Rwy ldg TDZE 5500 2402	Apt Elev 2419
-----------------------	------------------------	--	-------------------------

NDB RWY 6R

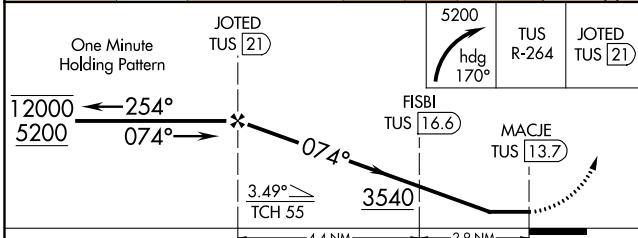
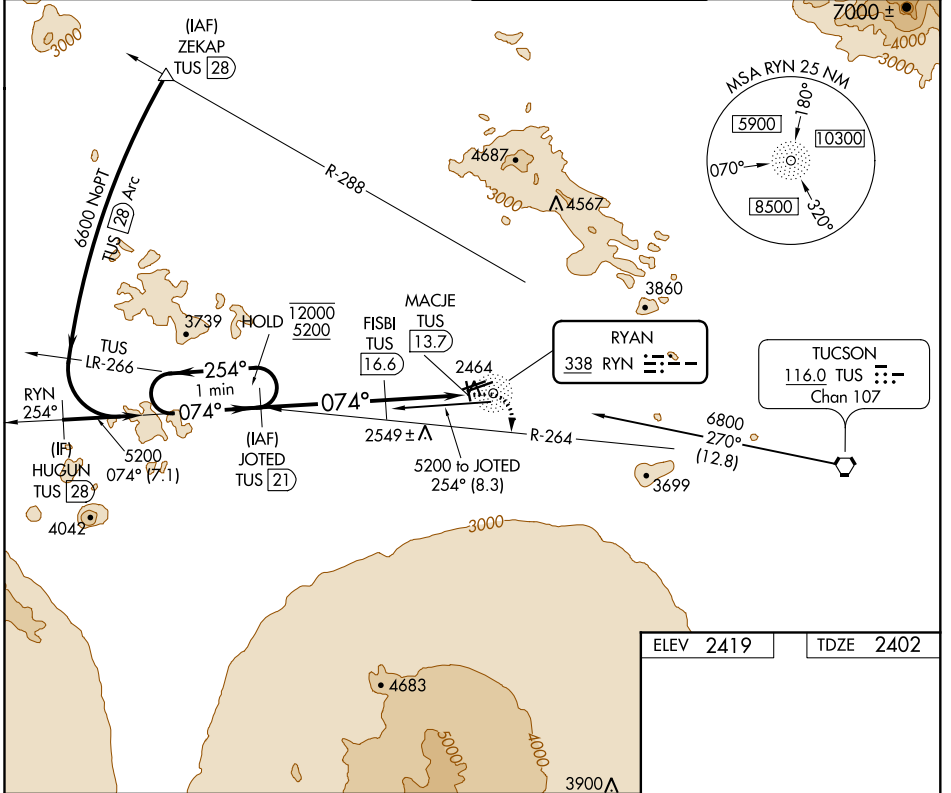
RYAN FIELD (RYN)

DME required.

NA Circling NA for Cat D north of Rwy 24R and east of Rwy 15.
Rwy 6R helicopter visibility reduction below 3/4 SM NA.
Simultaneous reception of RYN NDB and TUS DME required.

MISSED APPROACH: Climbing right turn to 5200 on heading 170° and TUS VORTAC R-264 to JOTED/TUS 21 DME and hold.

AWOS-3 133.35	TUCSON APP CON 128.5 273.6	RYAN TOWER★ 125.8 (CTAF) 0	GND CON 118.2
-------------------------	--------------------------------------	--------------------------------------	-------------------------



ELEV 2419	TDZE 2402
-----------	-----------

The detailed runway layout shows:

- RWY 6L:** 4900 x 75 ft, 51 ft width.
- RWY 24R:** 5500 x 75 ft, 75 ft width.
- RWY 24L:** 4010 x 75 ft, 75 ft width.
- RWY 6R:** 5000 x 75 ft, 75 ft width.
- Taxiways:** TWY 2484, TWY 2477, TWY 33.
- Distances:** 074° 7.4 NM from FAF.
- Altitudes:** 2477 ft, 2484 ft.

MIRL Rwy 6L-24R
REIL Rws 6R and 6L
MIRL Rws 6R-24L and 15-33 0

CATEGORY	A	B	C	D
S-6R	2980-1	578 (600-1)	2980-1 3/4	578 (600-1 3/4)
C CIRCLING	2980-1	561 (600-1)	3040-1 3/4 621 (700-1 3/4)	3320-3 901 (1000-3)

SW-4, 25 FEB 2021 to 25 MAR 2021

SW-4, 25 FEB 2021 to 25 MAR 2021

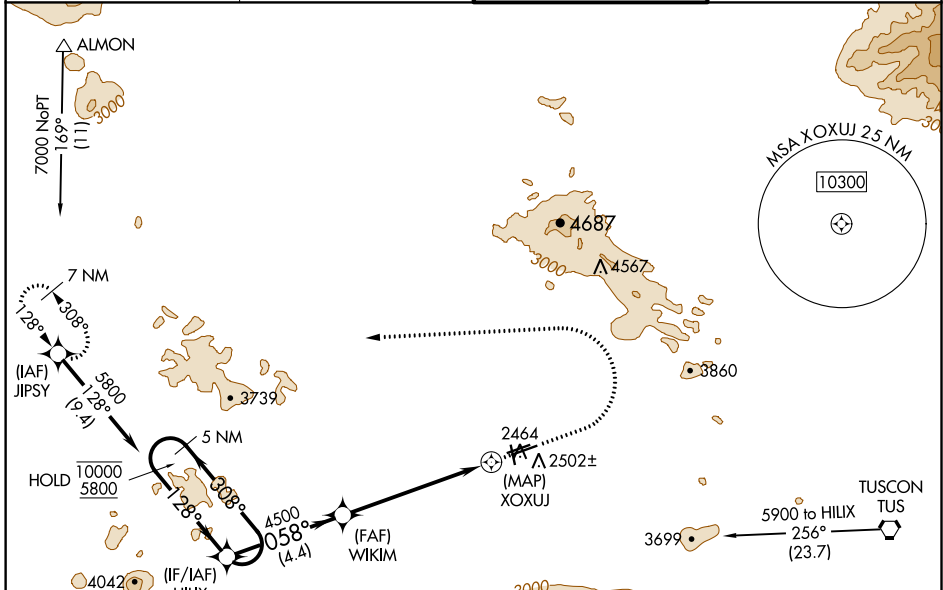
WAAS CH 86244 W06A	APP CRS 058°	Rwy ldg TDZE 2402 Apt Elev 2419
--	------------------------	---

RNAV (GPS) RWY 6R

RYAN FIELD (RYN)

RNP APCH.	MISSED APPROACH: Max 240K until JIPSY. Climb to 2900 then climbing left turn to 7000 direct JIPSY and hold. Continue climb-in-hold to 7000.
-----------	---

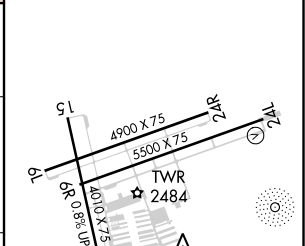
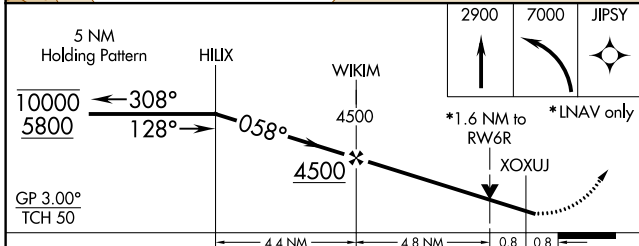
AWOS-3 133.35	TUCSON APP CON 128.5 273.6	RYAN TOWER★ 125.8 (CTAF) 0	GND CON 118.2
-------------------------	--------------------------------------	--------------------------------------	-------------------------



SW-4, 25 FEB 2021 to 25 MAR 2021

SW-4, 25 FEB 2021 to 25 MAR 2021

ELEV 2419	TDZE 2402
-----------	-----------



CATEGORY	A	B	C	D
LPV DA		2675-7/8	273 (300-7/8)	
RNAV/VNAV DA		2756-1	354 (400-1)	
RNAV MDA	2960-1	558 (600-1)	2960-15/8	558 (600-15/8)
C CIRCLING	2960-1	541 (600-1)	3040-13/4 621 (700-13/4)	3320-3 901 (1000-3)

MRL Rwy 6L-24R
REL Rwy 6R and 6L
MRL Rwy 6R-24L and 15-33 0