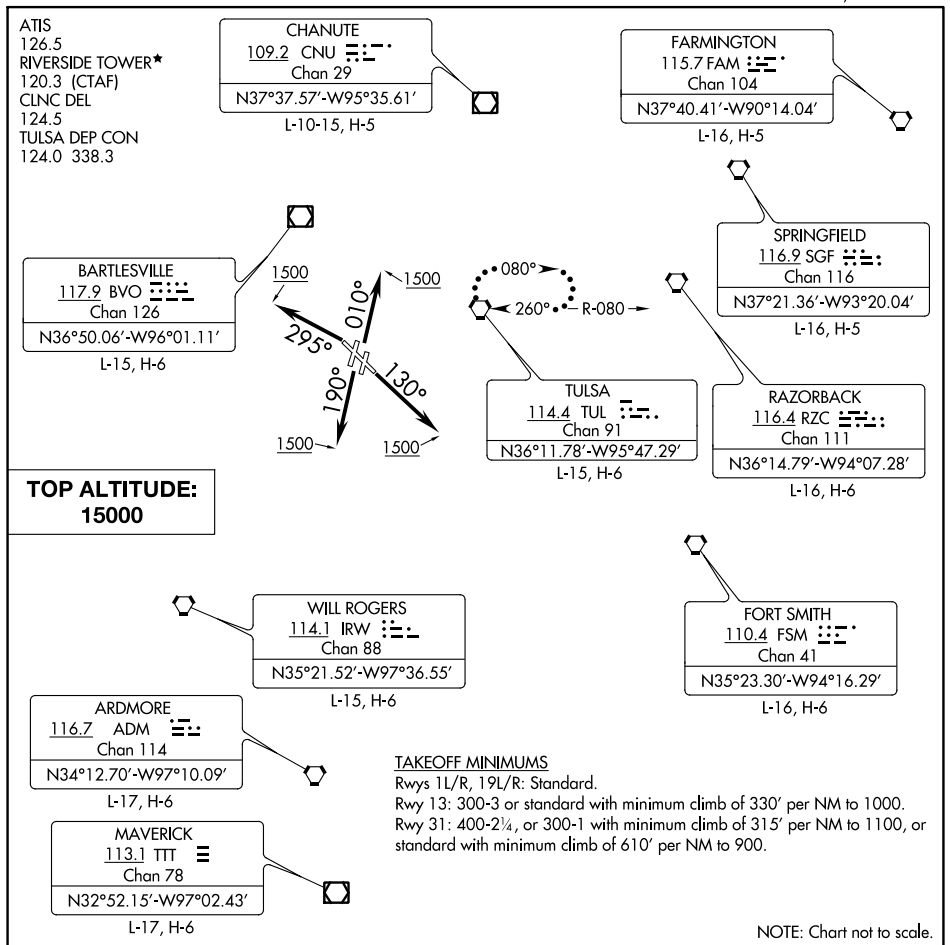


# TULSA NINE DEPARTURE



SC-1, 18 MAY 2023 to 15 JUN 2023

SC-1, 18 MAY 2023 to 15 JUN 2023



## DEPARTURE ROUTE DESCRIPTION

- TAKEOFF RUNWAYS 1L/R:** Climb on heading 010° to 1500, thence. . .
- TAKEOFF RUNWAY 13:** Climb on heading 130° to 1500, thence. . .
- TAKEOFF RUNWAYS 19L/R:** Climb on heading 190° to 1500, thence. . .
- TAKEOFF RUNWAY 31:** Climb on heading 295° to 1500, thence. . .

. . . continue on assigned heading for RADAR vectors to assigned route, maintain 15000 or assigned lower altitude, expect further clearance to filed altitude 10 minutes after departure.

**LOST COMMUNICATIONS:** Proceed to and hold east of TUL VORTAC on the 080° radial. Climb to 15000 feet or lower requested altitude, then proceed on course on filed route. Climb to requested altitude when established on course.