

WAAS CH 69340 W225A	APP CRS 251°	Rwy Idg TDZE Apt Elev	3502 1254 1255
---	------------------------	-----------------------------	---

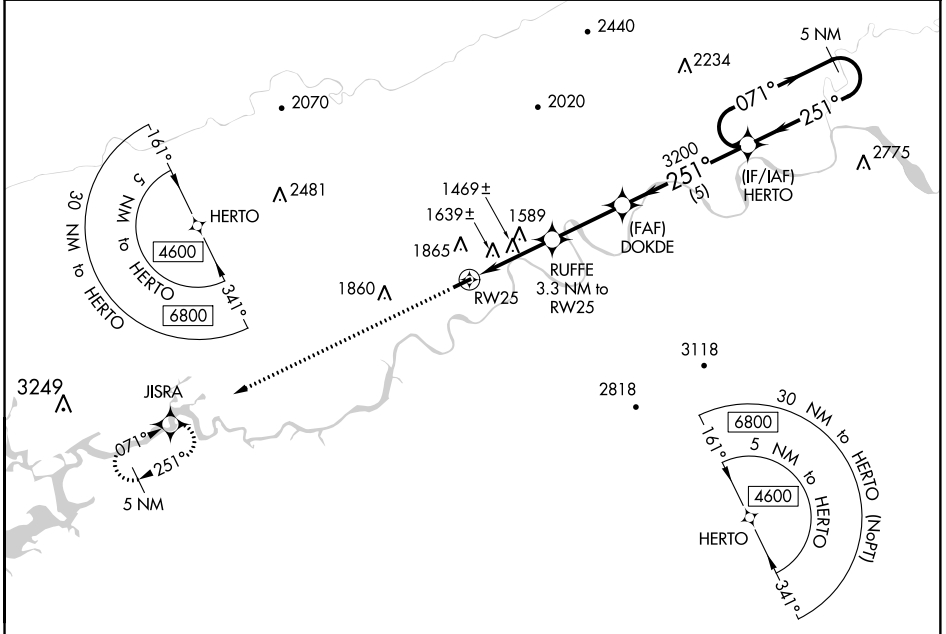
RNAV (GPS) RWY 25

HAWKINS COUNTY (RVN)

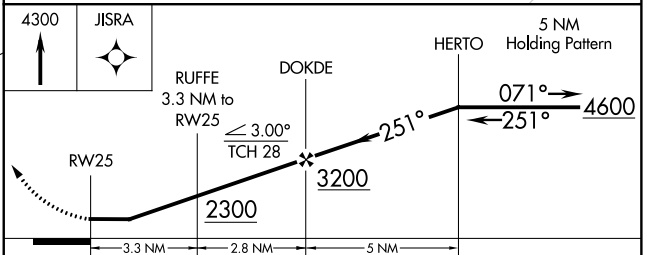
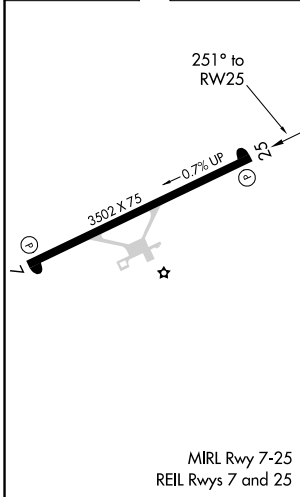
NA DME/DME RNP-0.3 NA. Procedure NA at night. Obtain local altimeter setting on CTAF; when not received, use Tri-Cities altimeter setting and increase all MDA 120 feet, increase LP Cat C visibility $\frac{3}{8}$ SM, LNAV Cat B visibility $\frac{1}{4}$ SM, Cat C visibility $\frac{5}{8}$ SM, and increase Circling Cat B visibility $\frac{1}{4}$ SM. Rwy 7, 25 helicopter visibility reduction below 1 SM NA.

MISSED APPROACH:
Climb to 4300 direct JISRA and hold.

TRI CITY APP CON ★ 128.05 317.5	UNICOM 122.8 (CTAF)
---	-------------------------------



ELEV 1255	TDZE 1254
-----------	-----------



CATEGORY	A	B	C	D
LP MDA	1720-1	466 (500-1)	1720-1 $\frac{3}{8}$ 466 (500-1 $\frac{5}{8}$)	NA
LNAV MDA	1900-1	646 (700-1)	1900-1 $\frac{7}{8}$ 646 (700-1 $\frac{5}{8}$)	NA
<input checked="" type="checkbox"/> CIRCLING	2180-1 $\frac{1}{4}$	925 (1000-1 $\frac{1}{4}$)	2320-3 1065 (1100-3)	NA

SE-1, 04 NOV 2021 to 02 DEC 2021

SE-1, 04 NOV 2021 to 02 DEC 2021

WAAS CH 58040 W07A	APP CRS 071°	Rwy Idg TDZE 1255 Apt Elev 1255
--	------------------------	---

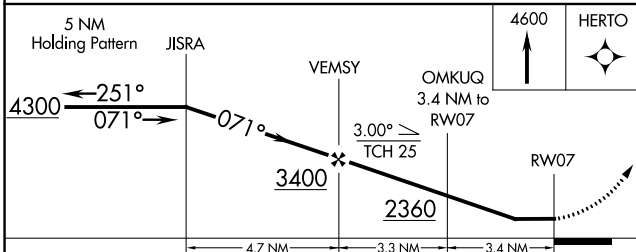
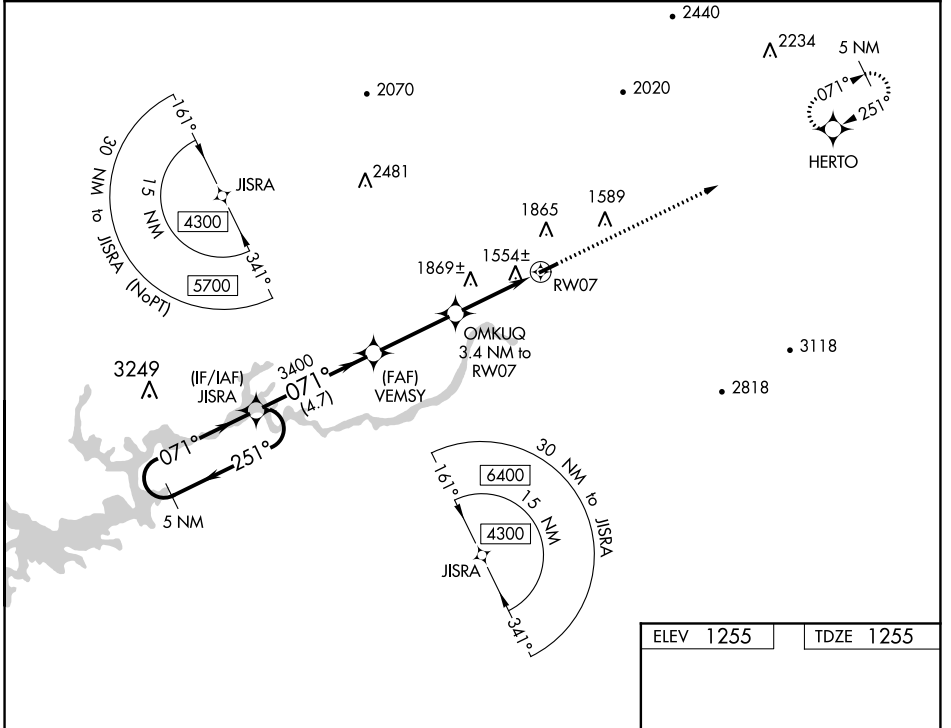
RNAV (GPS) RWY 7

HAWKINS COUNTY (RVN)

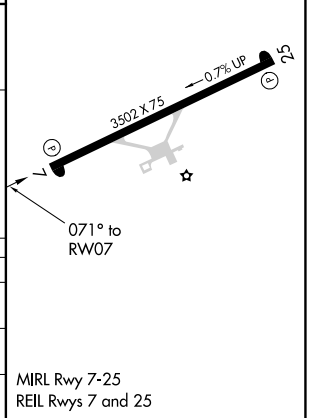
NA DME/DME RNP-0.3 NA. Procedure NA at night. Obtain local altimeter setting on CTAF; when not received, use Tri-Cities altimeter setting and increase all MDA 120 feet, increase LP Cat C visibility $\frac{3}{8}$ SM, increase LNAV Cat A and Circling Cat B visibility $\frac{1}{4}$ SM. Rwy 7, 25 helicopter visibility reduction below 1 SM NA.

MISSED APPROACH: Climb to 4600 direct HERTO and hold, continue climb-in-hold to 4600.

TRI CITY APP CON ★ 128.05 317.5	UNICOM 122.8 (CTAF)
---	-------------------------------



ELEV 1255	TDZE 1255
-----------	-----------



CATEGORY	A	B	C	D
LP MDA	1820-1	565 (600-1)	1820-1 $\frac{1}{8}$ 565 (600-1 $\frac{1}{8}$)	NA
LNAV MDA	2040-1 785 (800-1)	2040-1 $\frac{1}{4}$ 785 (800-1 $\frac{1}{4}$)	2040-2 $\frac{1}{2}$ 785 (800-2 $\frac{1}{2}$)	NA
CIRCLING	2180-1 $\frac{1}{4}$	925 (1000-1 $\frac{1}{4}$)	2320-3 1065 (1100-3)	NA

MIRL Rwy 7-25
REIL Rws 7 and 25

HAWKINS COUNTY (RVN)
RNAV (GPS) RWY 7