

LOC I-RIW <b>110.5</b>	APP CRS <b>284°</b>	Rwy ldg TDZE Apt Elev	<b>8204</b> <b>5459</b> <b>5516</b>
---------------------------	------------------------	-----------------------------	---

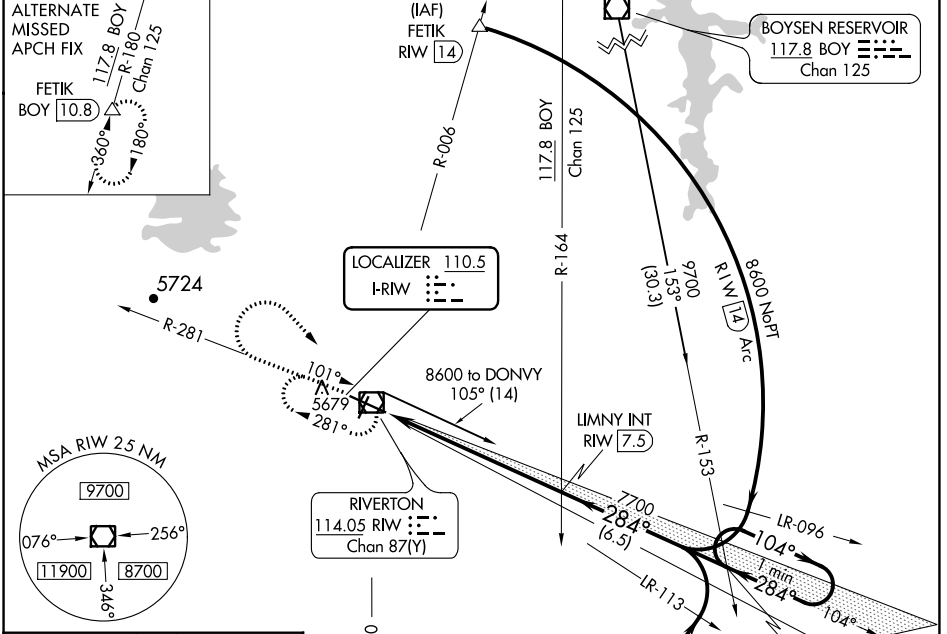
# ILS or LOC RWY 28

CENTRAL WYOMING RGNL (RIW)

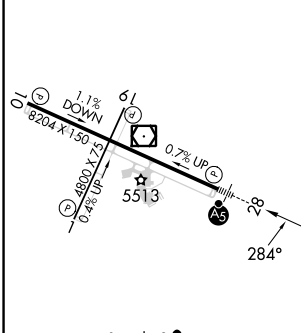
**NA** When local altimeter setting not received, use Lander altimeter setting: increase DA to 5713 feet; increase all MDA 60 feet and S-LOC 28 Cat C and D visibility ¼ mile. For inop MALSR, when using Lander altimeter setting, increase S-ILS 28 all Cats visibility to ¾ mile and S-LOC 28 Cat C and D visibility to 1 ½ mile. VDP NA when using Lander altimeter setting.

**MALSR** MISSED APPROACH: Climb to 6800 then climbing right turn to 7700 direct RIW VOR/DME and hold, continue climb-in-hold to 7700.

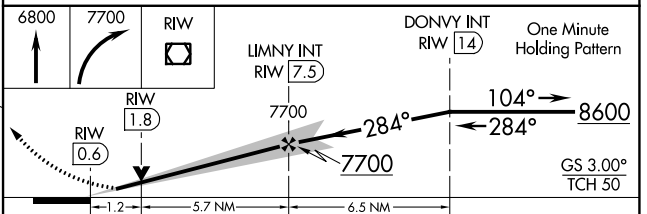
<b>ASOS</b> <b>121.425</b>	<b>SALT LAKE CENTER</b> <b>133.25 285.6</b>	<b>UNICOM</b> <b>122.8 (CTAF)</b>
-------------------------------	--	--------------------------------------



ELEV 5516	<b>D</b>	TDZE 5459
-----------	----------	-----------



REIL Rws 1, 10 and 19	MIRL Rwy 1-19	HIRL Rwy 10-28			
FAF to MAP 6.9 NM					
Knots	60	90	120	150	180
Min:Sec	6:54	4:36	3:27	2:46	2:18



CATEGORY	A	B	C	D
S-ILS 28	5659-½ 200 (200-½)			
S-LOC 28	5880-½ 421 (400-½)		5880-¾ 421 (400-¾)	
<b>C</b> CIRCLING	6000-1 484 (500-1)		6000-1½ 6120-2 484 (500-1½)	

NW-1, 22 FEB 2024 to 21 MAR 2024

NW-1, 22 FEB 2024 to 21 MAR 2024

WAAS CH <b>42899</b> <b>W10A</b>	APP CRS <b>104°</b>	Rwy Idg TDZE Apt Elev	<b>8204</b> <b>5516</b> <b>5516</b>
--	------------------------	-----------------------------	---

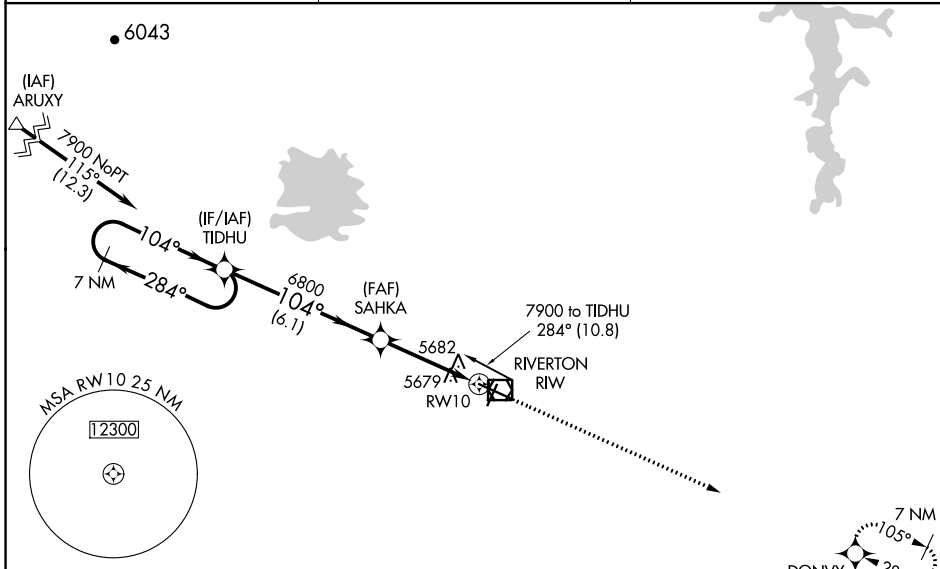
# RNAV (GPS) RWY 10

CENTRAL WYOMING RGNL (RIW)

**⚠** DME/DME RNP-0.3 NA. When local altimeter setting not received, use Lander altimeter setting and increase all DA 54 feet and all MDA 60 feet, and increase LPV and LNAV/VNAV all Cats visibility ¼ mile and increase LNAV Cat C/D visibility ½ mile. Baro-VNAV and VDP NA when using Lander altimeter setting. Rwy 10 helicopter visibility reduction below ¾ SM NA. For uncompensated Baro-VNAV systems, LNAV/VNAV NA below -27°C (-16°F) or above 48°C (118°F).

MISSED APPROACH: Climb to 8600 direct DONVY and hold.

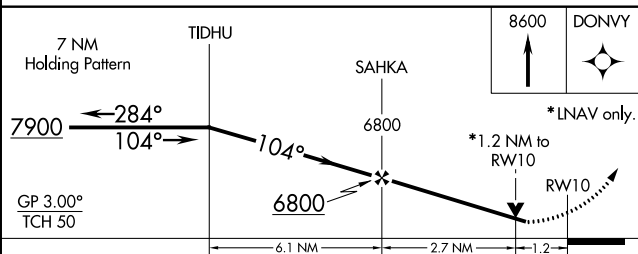
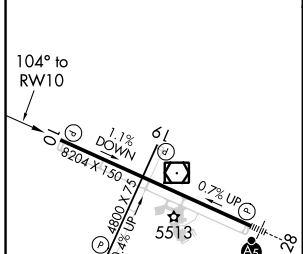
ASOS <b>121.425</b>	SALT LAKE CENTER <b>133.25 285.6</b>	UNICOM <b>122.8 (CTAF) 0</b>
------------------------	---	---------------------------------



NW-1, 22 FEB 2024 to 21 MAR 2024

NW-1, 22 FEB 2024 to 21 MAR 2024

ELEV 5516	<b>D</b>	TDZE 5516
-----------	----------	-----------



CATEGORY	A	B	C	D
LPV DA		5902-1¼	386 (400-1¼)	
LNAV/VNAV DA		5965-1½	449 (500-1½)	
LNAV MDA	5940-1	424 (500-1)	5940-1¼	424 (500-1¼)
<b>C</b> CIRCLING	6000-1	484 (500-1)	6000-1½	6120-2 604 (700-2)

REIL Rws 1, 10 and 19 **0**  
MIRL Rwy 1-19 **0**  
HIRL Rwy 10-28 **0**


WAAS CH <b>61115</b> <b>W28A</b>	APP CRS <b>284°</b>	Rwy Idg <b>8204</b>
		TDZE <b>5459</b>
		Apt Elev <b>5516</b>

# RNAV (GPS) RWY 28

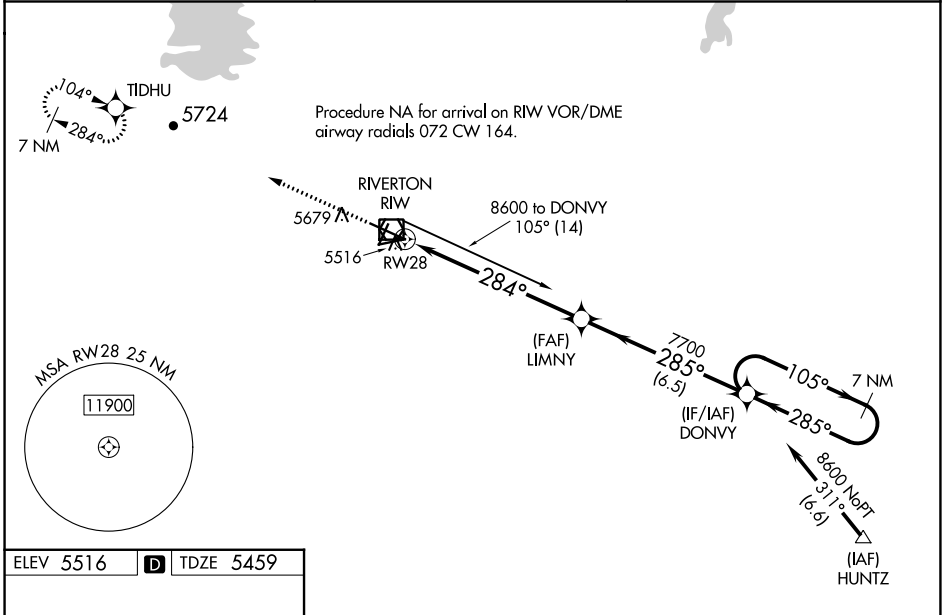
CENTRAL WYOMING RGNL (RIW)

RNP APCH - GPS.

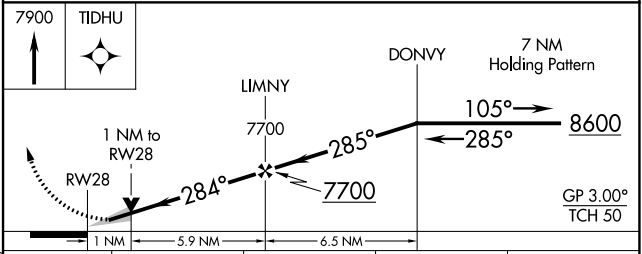
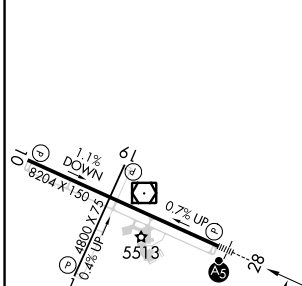
**⚠** Baro-VNAV and VDP NA when using Lander altimeter setting. For uncompensated Baro-VNAV systems, LNAV/VNAV NA below -27°C or above 48°C. For inop MALSR, increase LNAV/VNAV all Cats visibility to ½ mile and LNAV Cat C and D visibility to 1 mile. When local altimeter setting not received, use Lander altimeter setting: increase LPV DA to 5713 feet, LNAV/VNAV DA to 5763 and all visibilities ½ mile; increase all MDA 60 feet and LNAV Cat C and D visibility ½ mile. For inop MALSR, when using Lander altimeter setting, increase LPV all Cats visibility to ½ mile and LNAV/VNAV all Cats visibility to 1 mile.

MALSR  MISSED APPROACH: Climb to 7900 direct TIDHU and hold.




ASOS <b>121.425</b>	SALT LAKE CENTER <b>133.25 285.6</b>	UNICOM <b>122.8 (CTAF)</b> 
------------------------	---	---



ELEV 5516	<b>D</b>	TDZE 5459
-----------	----------	-----------



	A	B	C	D
LPV DA		5659-½	200 (200-½)	
LNAV/VNAV DA		5709-½	250 (200-½)	
LNAV MDA	5820-½	361 (400-½)	5820-⅝	361 (400-⅝)
<b>C</b> CIRCLING	6000-1	484 (500-1)	6000-1½ 484 (500-1½)	6120-2 604 (700-2)

REIL Rwy 1, 10, and 19   
 MIRL Rwy 1-19   
 HIRL Rwy 10-28 

NW-1, 22 FEB 2024 to 21 MAR 2024

NW-1, 22 FEB 2024 to 21 MAR 2024

VOR/DME R1W <b>114.05</b> Chan <b>87(Y)</b>	APP CRS <b>101°</b>	Rwy Idg <b>8204</b> TDZE <b>5516</b> Apt Elev <b>5516</b>
---	------------------------	---

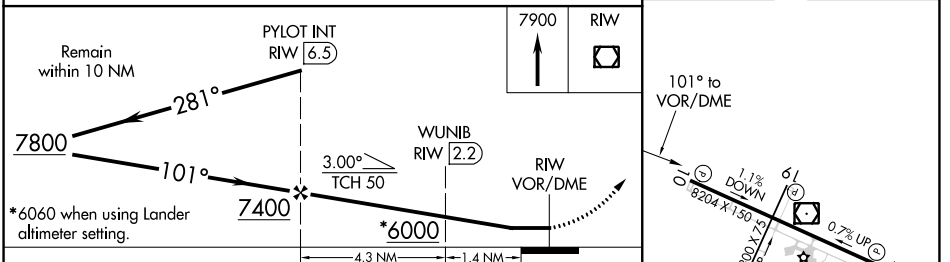
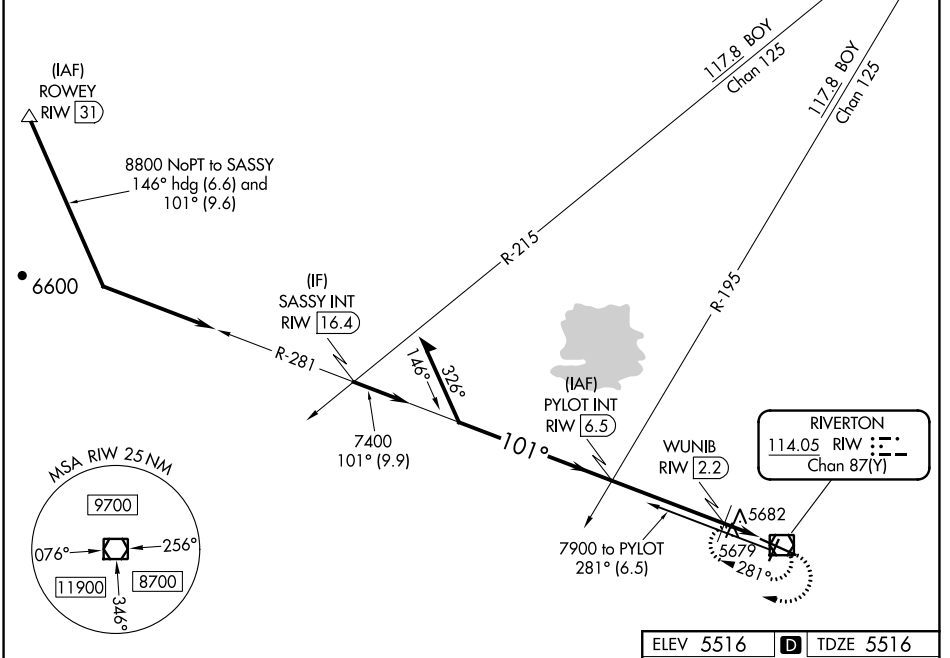
# VOR RWY 10

CENTRAL WYOMING RGNL (R1W)

**⚠** When local altimeter setting not received, use Lander altimeter setting and increase all MDA 60 feet and increase S-10 Cat C and D visibility ¼ mile and Circling Cat C visibility ½ mile, increase WUNIB fix minimums Cat C and D visibility ½ mile. Rwy 10 helicopter visibility reduction below ¾ SM NA.

MISSED APPROACH: Climb to 7900 in R1W VOR/DME holding pattern.

ASOS <b>121.425</b>	SALT LAKE CENTER <b>133.25 285.6</b>	UNICOM <b>122.8 (CTAF) 0</b>
------------------------	---	---------------------------------



CATEGORY	A	B	C	D
S-10	6000-1	484 (500-1)	6000-1 ¾	484 (500-1 ¾)
<b>C</b> CIRCLING	6000-1	484 (500-1)	6000-1 ½	6120-2 484 (500-1 ½) 604 (600-2)
WUNIB FIX MINIMUMS (DME REQUIRED)				
S-10	5940-1	424 (500-1)	5940-1 ¼	424 (500-1 ¼)
<b>C</b> CIRCLING	6000-1	484 (500-1)	6000-1 ½	6120-2 484 (500-1 ½) 604 (700-2)

ELEV 5516 **D** TDZE 5516

REIL Rwy 1, 10, and 19 **0**

MIRL Rwy 1-19 **0**

HIRL Rwy 10-28 **0**

NW-1, 22 FEB 2024 to 21 MAR 2024


NW-1, 22 FEB 2024 to 21 MAR 2024


VOR/DME RIW <b>114.05</b> Chan 87(Y)	APP CRS <b>293°</b>	Rwy Idg TDZE Apt Elev	<b>8204</b> <b>5459</b> <b>5516</b>
--	------------------------	-----------------------------	---

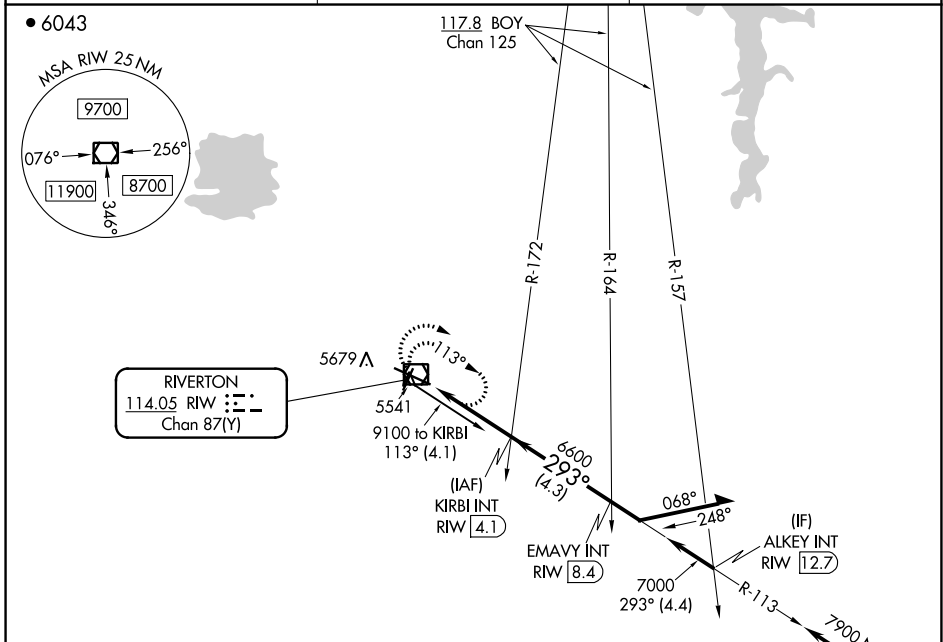
# VOR RWY 28

CENTRAL WYOMING RGNL (RIW)

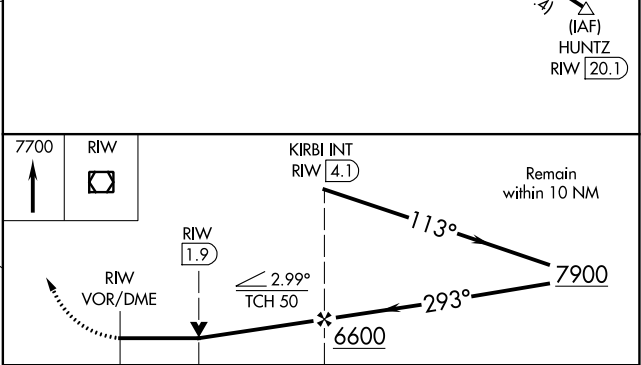
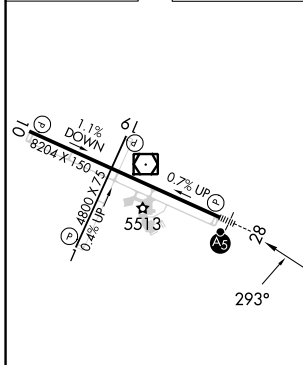
**⚠** When local altimeter setting not received, use Lander altimeter setting and increase all MDA 60 feet. VDP NA when using Lander altimeter setting. For inop MALSR, increase S-28 Cat C and D visibility to 1½ miles.

**MALSR**  MISSED APPROACH: Climb to 7700 in RIW VOR/DME holding pattern.

ASOS <b>121.425</b>	SALT LAKE CENTER <b>133.25 285.6</b>	UNICOM <b>122.8 (CTAF)</b> 
------------------------	---	---



ELEV 5516	<b>D</b>	TDZE 5459
-----------	----------	-----------



CATEGORY	A	B	C	D
S-28	5920-½ 461 (500-½)		5920-1 461 (500-1)	
<b>C</b> CIRCLING	6000-1 484 (500-1)		6000-1½ 484 (500-1½)	6120-2 604 (700-2)

NW-1, 22 FEB 2024 to 21 MAR 2024

NW-1, 22 FEB 2024 to 21 MAR 2024