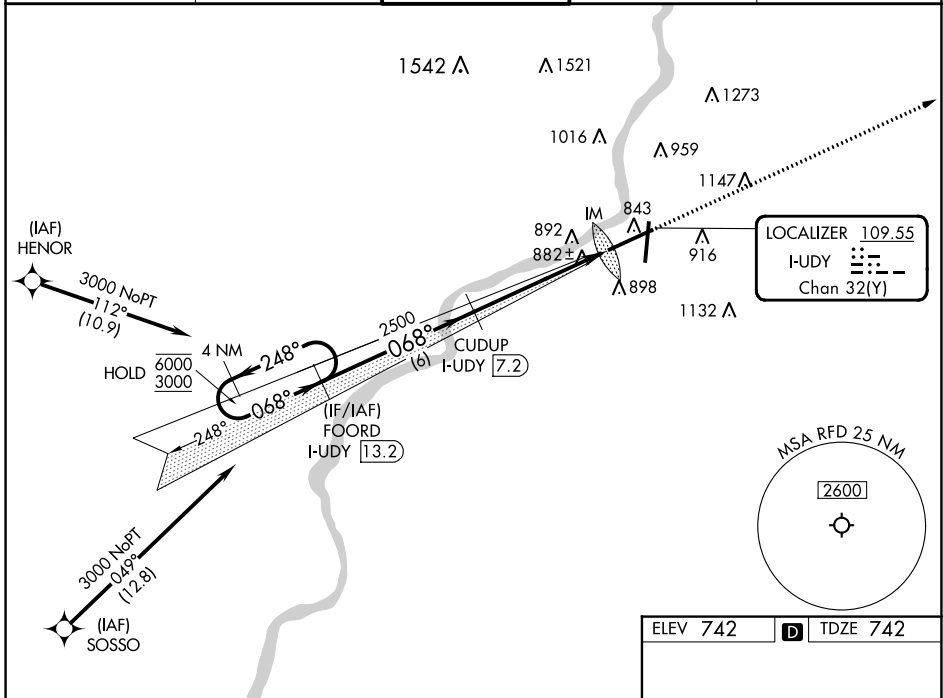


LOC/DME I-UDY 109.55 Chan 32 (Y)	APP CRS 068°	Rwy Idg 10002 TDZE 742 Apt Elev 742
--	------------------------	--

ILS RWY 7 (CAT II & III)
CHICAGO/ROCKFORD INTL (RFD)

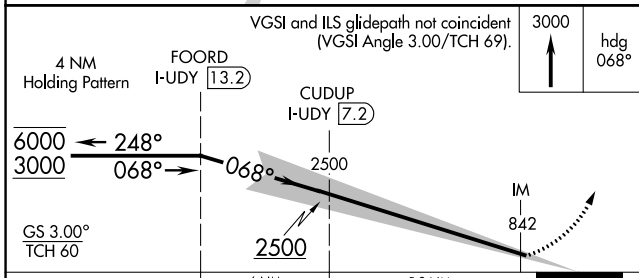
RNP APCH - GPS. From HENOR or SOSSO. RADAR required.	ALSF-2	MISSED APPROACH: Climb to 3000 on heading 068°. Expect RADAR vectors. (RADAR required).
ASR CAT II: RVR 1000 authorized with specific OPSPEC, MSPEC, or LOA approval and use of autoland or HUD to touchdown.		

ATIS 127.6	ROCKFORD APP CON 121.0 327.0	ROCKFORD TOWER 118.1 290.375	GND CON 121.9 290.375	CLNC DEL 119.25
----------------------	--	--	---------------------------------	---------------------------

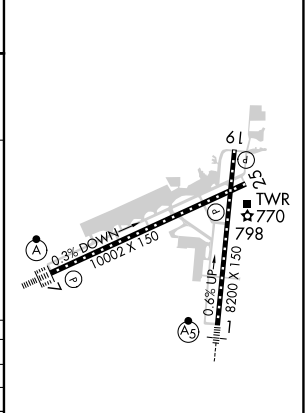


EC-3, 22 FEB 2024 to 21 MAR 2024

EC-3, 22 FEB 2024 to 21 MAR 2024



ELEV 742	D TDZE 742
----------	-------------------



CATEGORY	A	B	C	D
S-ILS 7	CAT II RA 114/12 100 DA 842			
S-ILS 7	CAT III RVR 06			

CATEGORY II & III ILS - SPECIAL AIRCREW & AIRCRAFT CERTIFICATION REQUIRED

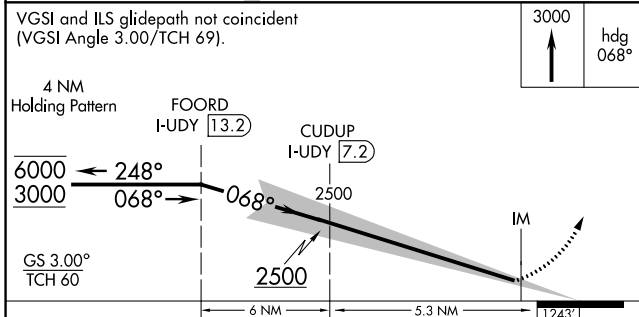
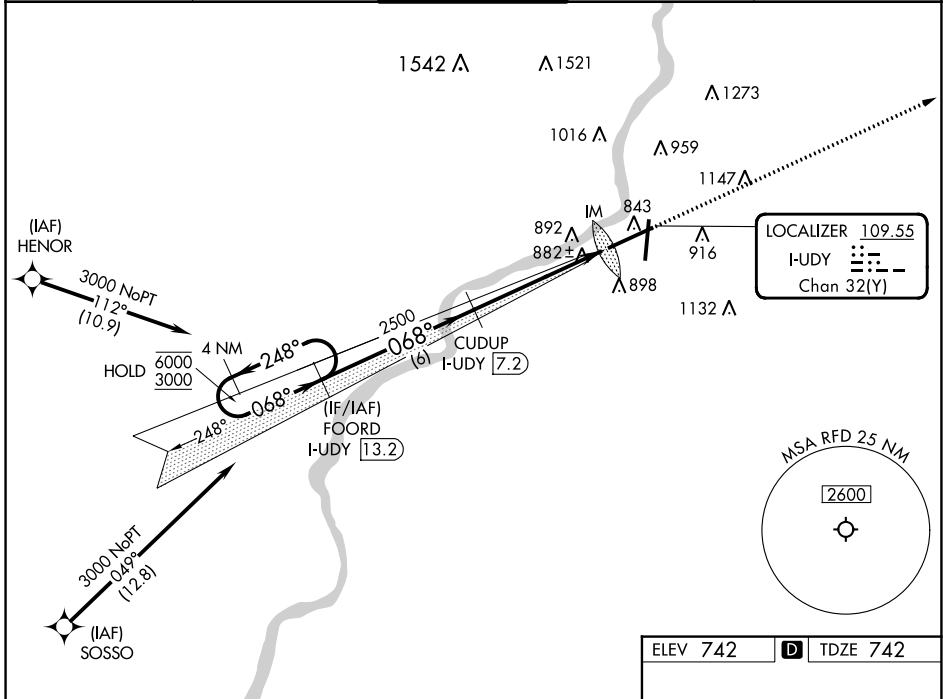
REIL Rwy 19 and 25
HIRL Rwy 1-19 and 7-25
TDZ/CL Rwy 1 and 7

LOC/DME I-UDY 109.55 Chan 32 (Y)	APP CRS 068°	Rwy Idg 10002 TDZE 742 Apt Elev 742
--	------------------------	--

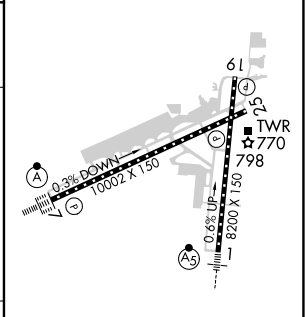
ILS RWY 7 (SA CAT I)
CHICAGO/ROCKFORD INTL (RFD)

RNP APCH - GPS. From HENOR or SOSSO. RADAR required.		ALSF-2	MISSED APPROACH: Climb to 3000 on heading 068°. Expect RADAR vectors. (RADAR required).	
ASR	Requires specific OPSPEC, MSPEC, or LOA approval.			

ATIS 127.6	ROCKFORD APP CON 121.0 327.0	ROCKFORD TOWER 118.1 290.375	GND CON 121.9 290.375	CLNC DEL 119.25
----------------------	--	--	---------------------------------	---------------------------



ELEV 742	TDZE 742
----------	----------



CATEGORY	A	B	C	D
S-ILS 7	RA 164/14 150 DA 892			

SA CATEGORY I ILS - SPECIAL AIRCREW & AIRCRAFT CERTIFICATION REQUIRED

REIL Rwy's 19 and 25
HIRL Rwy's 1-19 and 7-25
TDZ/CL Rwy's 1 and 7

EC-3, 22 FEB 2024 to 21 MAR 2024

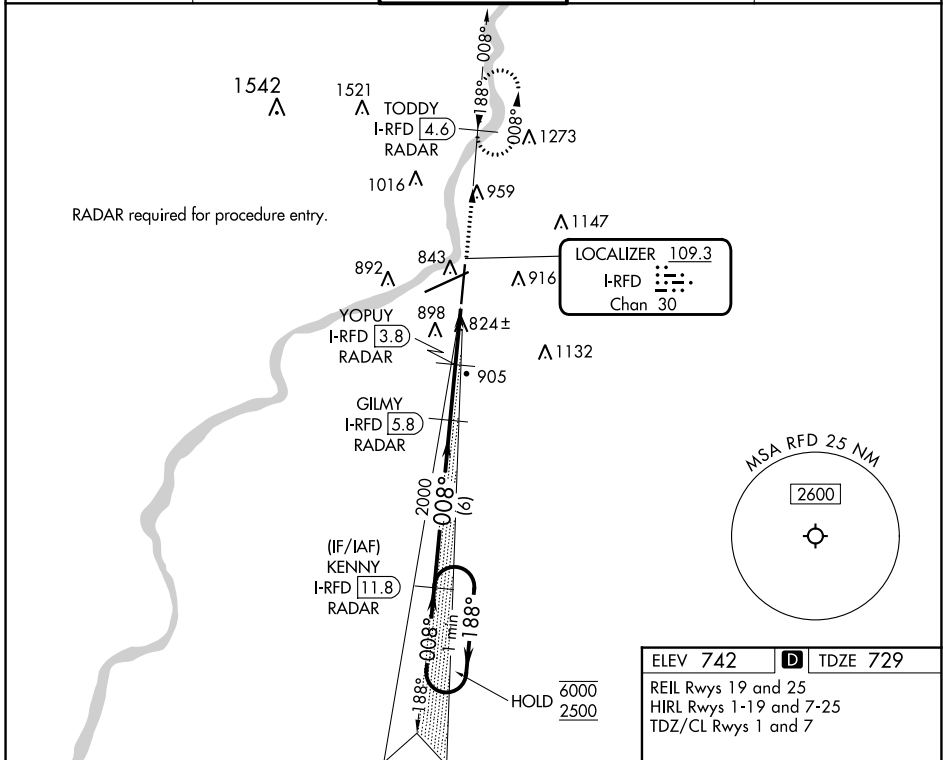
EC-3, 22 FEB 2024 to 21 MAR 2024

LOC/DME I-RFD 109.3 Chan 30	APP CRS 008°	Rwy Idg 8199 TDZE 729 Apt Elev 742
--	------------------------	---

ILS or LOC RWY 1
CHICAGO/ROCKFORD INTL (RFD)

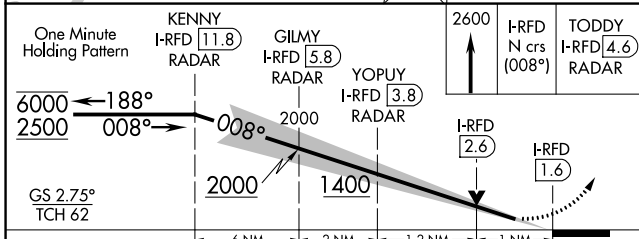
DME or RADAR required.		MALSR 	MISSED APPROACH: Climb to 2600 on I-RFD localizer N course (008°) to TODDY/4.6 DME/RADAR and hold, continue climb-in-hold to 2600.
	Inop table does not apply to S-ILS. For inop ALS, increase S-LOC 1 Cat C/D visibility to RVR 5500.		

ATIS 127.6	ROCKFORD APP CON 121.0 327.0	ROCKFORD TOWER 118.1 290.375	GND CON 121.9 290.375	CLNC DEL 119.25
----------------------	--	---	---------------------------------	---------------------------

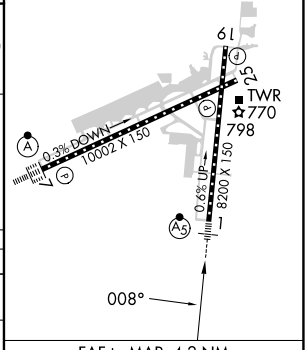


EC-3, 22 FEB 2024 to 21 MAR 2024

EC-3, 22 FEB 2024 to 21 MAR 2024



ELEV 742	D TDZE 729
REIL Rwy 19 and 25 HIRL Rwy 1-19 and 7-25 TDZ/CL Rwy 1 and 7	



One Minute Holding Pattern	KENNY I-RFD [11.8] RADAR	GILMY I-RFD [5.8] RADAR	YOPUY I-RFD [3.8] RADAR	TODDY I-RFD [4.6] RADAR
6000 ← 188°	2000	2000	2000	2600
2500 → 008°	1400			I-RFD [2.6]
GS 2.75°				I-RFD [1.6]
TCH 62				
	6 NM	2 NM	1.2 NM	1 NM
CATEGORY	A	B	C	D
S-ILS 1	929/18		200 (200-½)	
S-LOC 1	1080/24	351 (400-½)	1080/30	351 (400-¾)
C CIRCLING	1220-1 478 (500-1)	1280-1 538 (600-1)	1320-1½ 578 (600-1½)	1460-2¼ 718 (800-2¼)

FAF to MAP 4.2 NM					
Knots	60	90	120	150	180
Min:Sec	4:12	2:48	2:06	1:41	1:24

LOC/DME I-UDY 109.55 Chan 32 (Y)	APP CRS 068°	Rwy Idg 10002 TDZE 742 Apt Elev 742
--	------------------------	--

ILS or LOC RWY 7

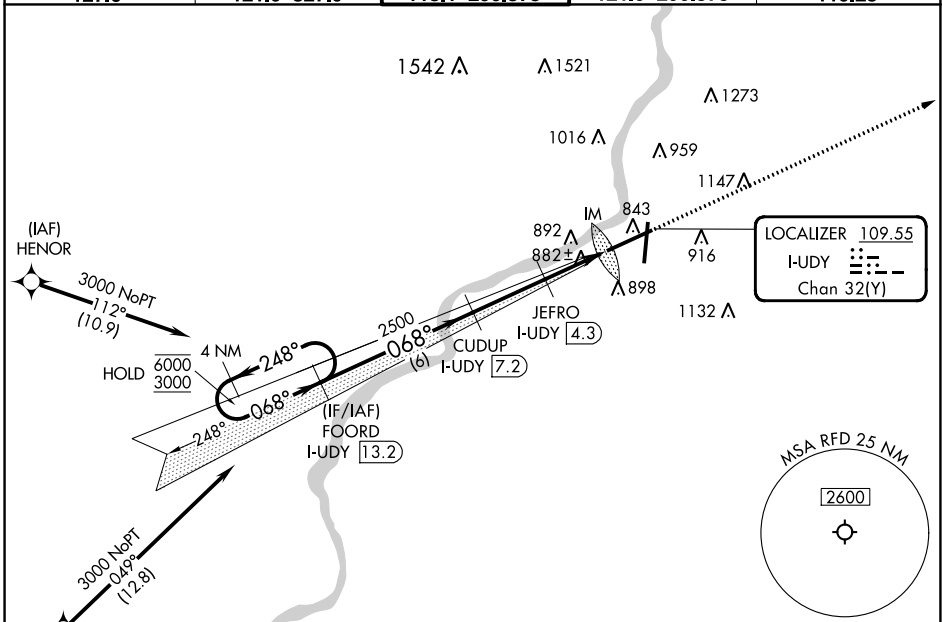
CHICAGO/ROCKFORD INTL (RFD)

DME required for LOC only.
RNP APCH - GPS. From HENOR or SOSSO.
RADAR required.

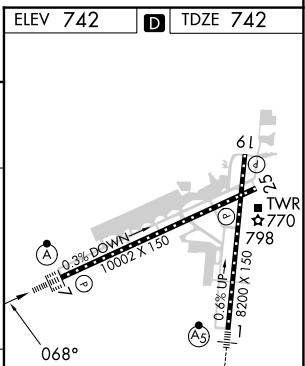
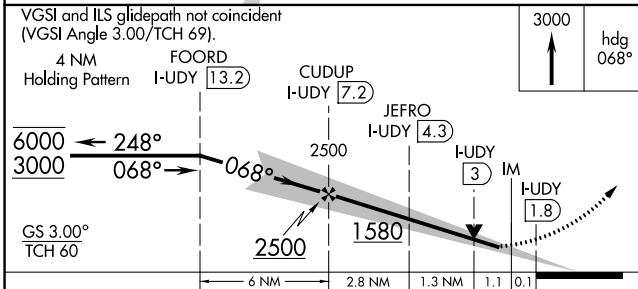
ALS-F-2

MISSED APPROACH: Climb to 3000 on heading 068°. Expect RADAR vectors. (RADAR required).

ATIS 127.6	ROCKFORD APP CON 121.0 327.0	ROCKFORD TOWER 118.1 290.375	GND CON 121.9 290.375	CLNC DEL 119.25
----------------------	--	--	---------------------------------	---------------------------



ELEV 742	TDZE 742
----------	----------



CATEGORY	A	B	C	D
S-ILS 7	942/18		200 (200-½)	
S-LOC 7	1200/24	458 (500-½)	1200/45	458 (500-¾)
CIRCLING	1220-1 478 (500-1)	1280-1 538 (600-1)	1320-1½ 578 (600-1½)	1460-2¼ 718 (800-2¼)

REIL Rwy 19 and 25
HIRL Rwy 1-19 and 7-25
TDZ/CL Rwy 1 and 7

FAF to MAP 5.3 NM

Knots	60	90	120	150	180
Min:Sec	5:18	3:32	2:39	2:07	1:46

EC-3, 22 FEB 2024 to 21 MAR 2024

EC-3, 22 FEB 2024 to 21 MAR 2024

LOC/DME I-RFD 109.3 Chan 30	APP CRS 188°	Rwy Idg 8099 TDZE 736 Apt Elev 742
---	------------------------	---

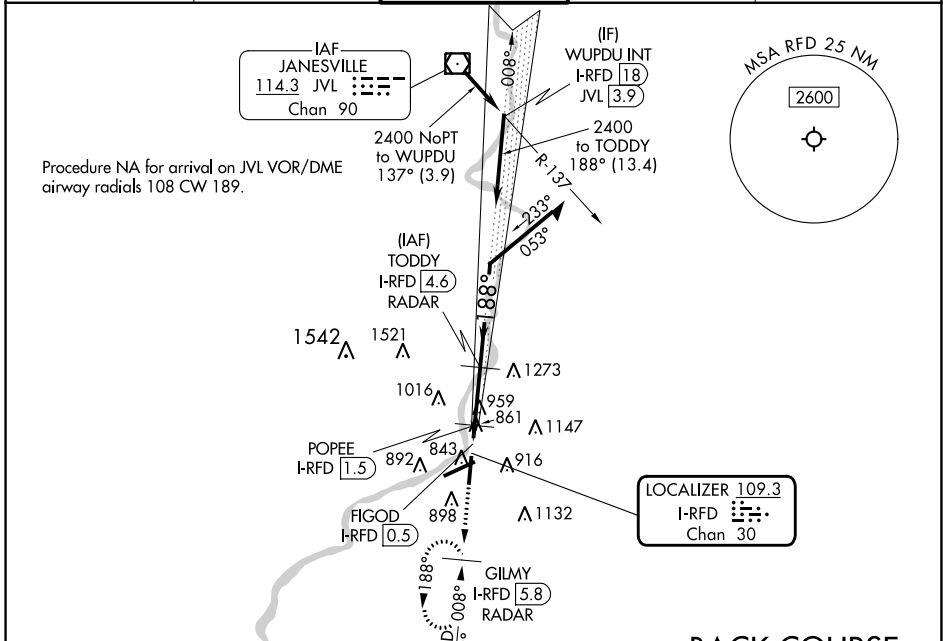
LOC BC RWY 19

CHICAGO/ROCKFORD INTL (RFD)

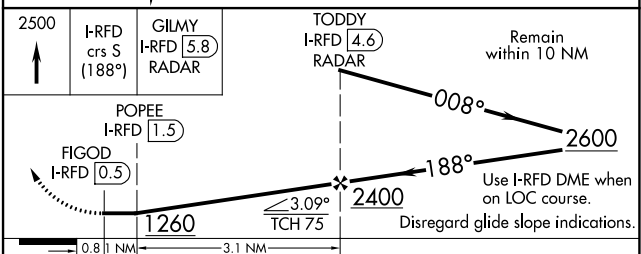
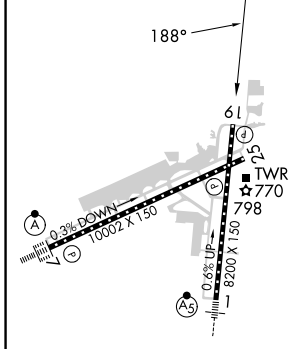
DME or RADAR required.

MISSED APPROACH: Climb to 2500 on I-RFD localizer course S (188°) to GILMY 5.8 DME/RADAR and hold, continue climb-in-hold to 2500.

ATIS 127.6	ROCKFORD APP CON 121.0 327.0	ROCKFORD TOWER 118.1 290.375	GND CON 121.9 290.375	CLNC DEL 119.25
----------------------	--	--	---------------------------------	---------------------------



ELEV 742	D	TDZE 736
----------	----------	----------



CATEGORY	A	B	C	D
S-19	1260-1 524 (600-1)		1260-1½ 524 (600-1½)	
C CIRCLING	1260-1 518 (600-1)	1280-1 538 (600-1)	1320-1½ 578 (600-1½)	1460-2¼ 718 (800-2¼)
POPEE FIX MINIMUMS (DME REQUIRED)				
S-19	1140-1 404 (400-1)		1140-1⅛ 404 (400-1⅛)	
C CIRCLING	1220-1 478 (500-1)	1280-1 538 (600-1)	1320-1½ 578 (600-1½)	1460-2¼ 718 (800-2¼)

EC-3, 22 FEB 2024 to 21 MAR 2024

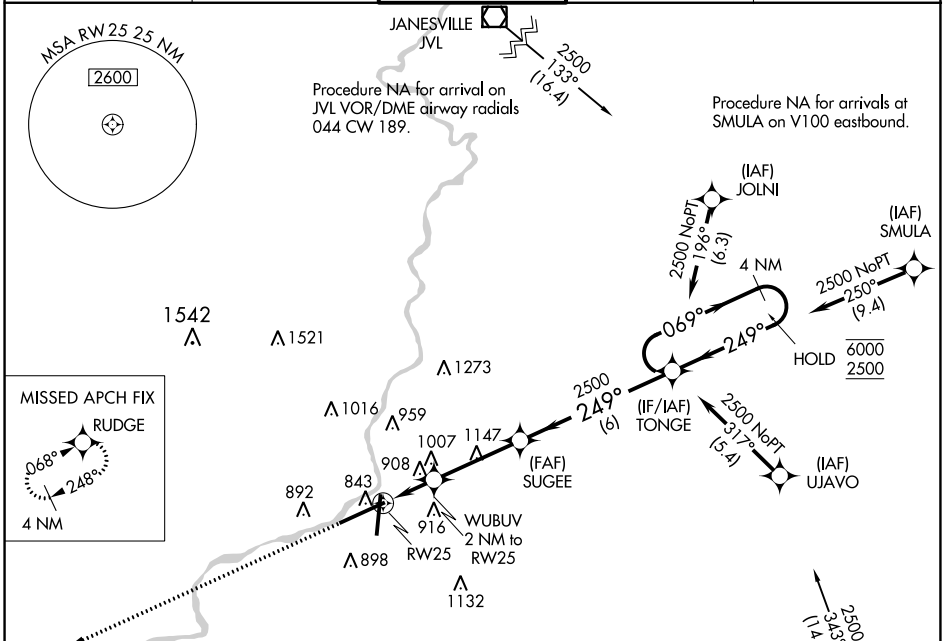
EC-3, 22 FEB 2024 to 21 MAR 2024

WAAS CH 40128 W25A	APP CRS 249°	Rwy Idg 10002 TDZE 736 Apt Elev 742
--	------------------------	--

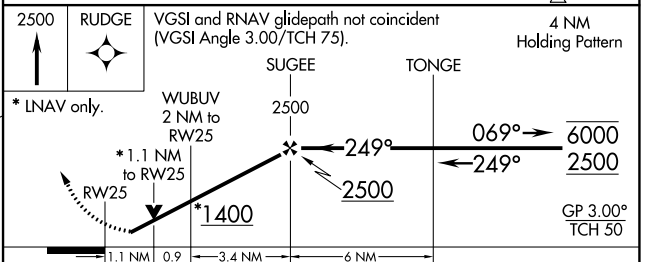
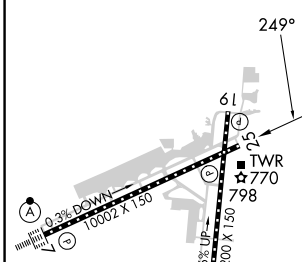
RNAV (GPS) RWY 25

CHICAGO/ROCKFORD INTL (RFD)

RNP APCH. Rwy 25 helicopter visibility reduction below 3/4 SM NA. For uncompensated Baro-VNAV systems, LNAV/VNAV NA below -25°C or above 39°C.		MISSED APPROACH: Climb to 2500 direct RUDGE and hold.		
ATIS 127.6	ROCKFORD APP CON 121.0 327.0	ROCKFORD TOWER 118.1 290.375	GND CON 121.9 290.375	CLNC DEL 119.25



ELEV 742	D	TDZE 736
-----------------	----------	-----------------



CATEGORY	A	B	C	D
LPV DA		986/50	250 (300-1)	
LNAV/VNAV DA		1191-1 3/8	455 (500-1 3/8)	
LNAV MDA		1160/55	424 (500-1)	
CIRCLING	1220-1 478 (500-1)	1280-1 538 (600-1)	1320-1 1/2 578 (600-1 1/2)	1460-2 1/4 718 (800-2 1/4)

EC-3, 22 FEB 2024 to 21 MAR 2024

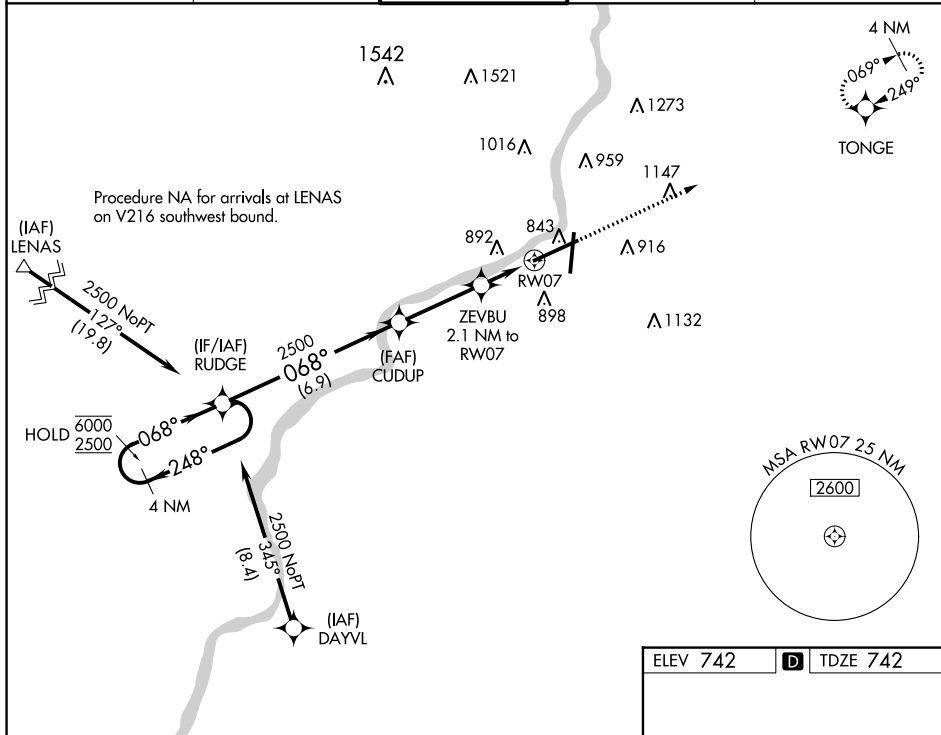
EC-3, 22 FEB 2024 to 21 MAR 2024

WAAS CH 53621 W07A	APP CRS 068°	Rwy Idg 10002 TDZE 742 Apt Elev 742
--	------------------------	--

RNAV (GPS) RWY 7

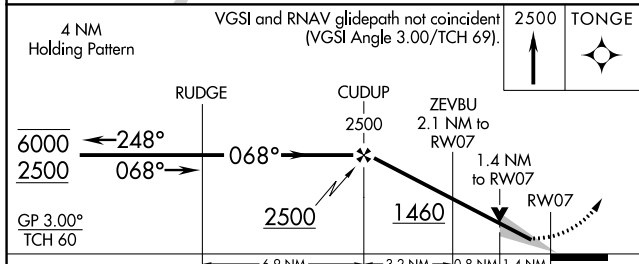
CHICAGO/ROCKFORD INTL (RFD)

RNP APCH - GPS.		ALSF-2	MISSED APPROACH: Climb to 2500 direct TONGE and hold.	
For uncompensated Baro-VNAV systems, LNAV/VNAV NA below -16°C or above 54°C.				
ATIS 127.6	ROCKFORD APP CON 121.0 327.0	ROCKFORD TOWER 118.1 290.375	GND CON 121.9 290.375	CLNC DEL 119.25

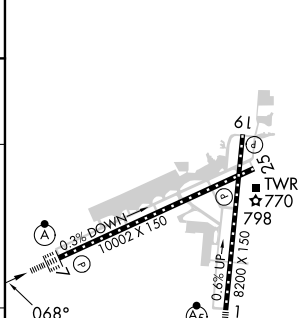


EC-3, 22 FEB 2024 to 21 MAR 2024

EC-3, 22 FEB 2024 to 21 MAR 2024



ELEV 742	D TDZE 742
----------	-------------------



CATEGORY	A	B	C	D
LPV DA		942/24	200 (200-½)	
LNAV/VNAV DA		1167/45	425 (500-¾)	
LNAV MDA	1240/24	498 (500-½)	1240/50	498 (500-1)
C CIRCLING	1240-1 498 (500-1)	1280-1 538 (600-1)	1320-1½ 578 (600-1½)	1460-2¼ 718 (800-2¼)

REIL Rwy 19 and 25
HIRL Rwy 1-19 and 7-25
TDZ/CL Rwy 1 and 7