

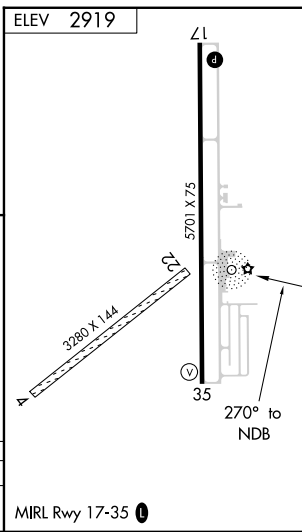
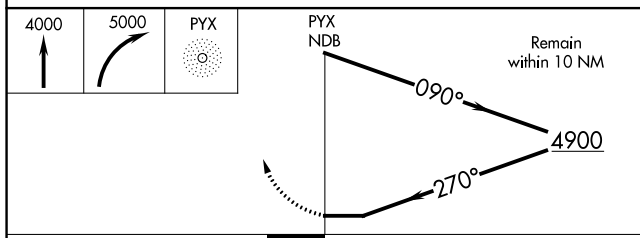
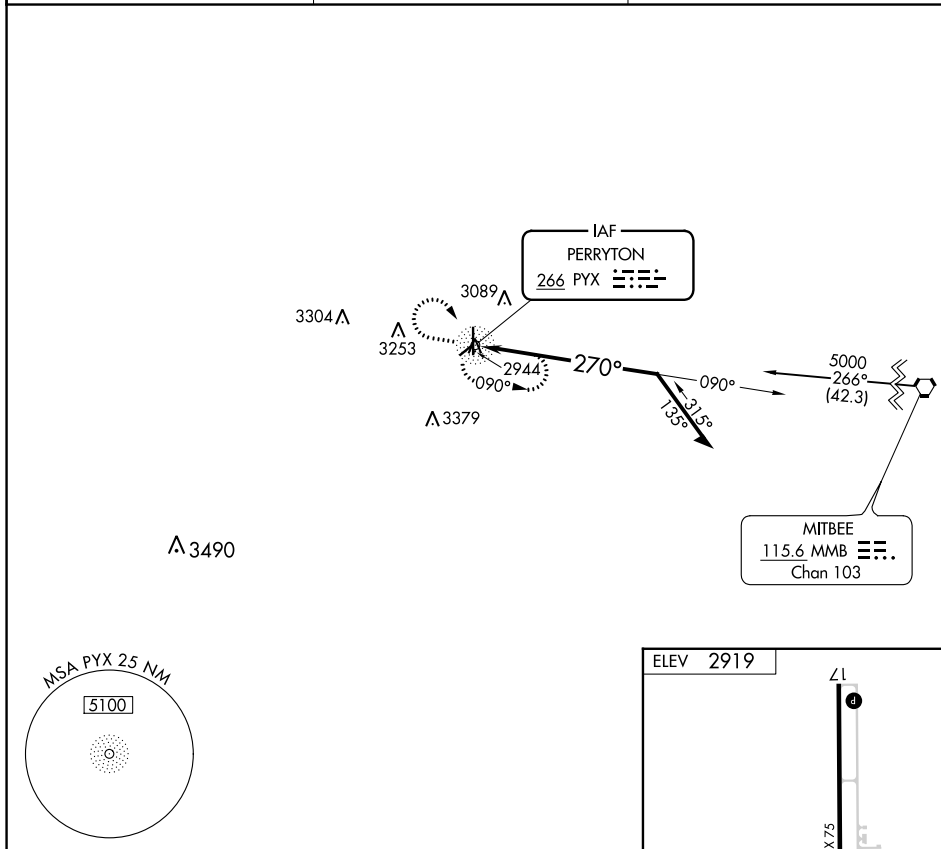
NDB PYX 266	APP CRS 270°	Rwy Idg TDZE Apt Elev	N/A N/A 2919
-----------------------	------------------------	-----------------------------	---

NDB-A
PERRYTON OCHILTREE COUNTY (PYX)

⚠ NA When local altimeter setting not received, use Gage altimeter setting and increase all MDA 220 feet and Cat B visibility ¼ mile. Circling NA to Rwy 4 and 22.

MISSED APPROACH: Climb to 4000 then climbing right turn to 5000 direct PYX NDB and hold.

AWOS-3 118.175	KANSAS CITY CENTER 126.95 379.2	UNICOM 122.8 (CTAF) 0
--------------------------	---	--



CATEGORY	A	B	C	D
C CIRCLING	3460-1 542 (600-1)	3580-1 662 (700-1)	NA	

SC-2, 22 FEB 2024 to 21 MAR 2024

SC-2, 22 FEB 2024 to 21 MAR 2024

WAAS CH 86833 W17A	APP CRS 173°	Rwy Idg TDZE Apt Elev	5701 2918 2918
--	------------------------	-----------------------------	---

RNAV (GPS) RWY 17

PERRYTON OCHILTREE COUNTY (PYX)

RNP APCH - GPS.

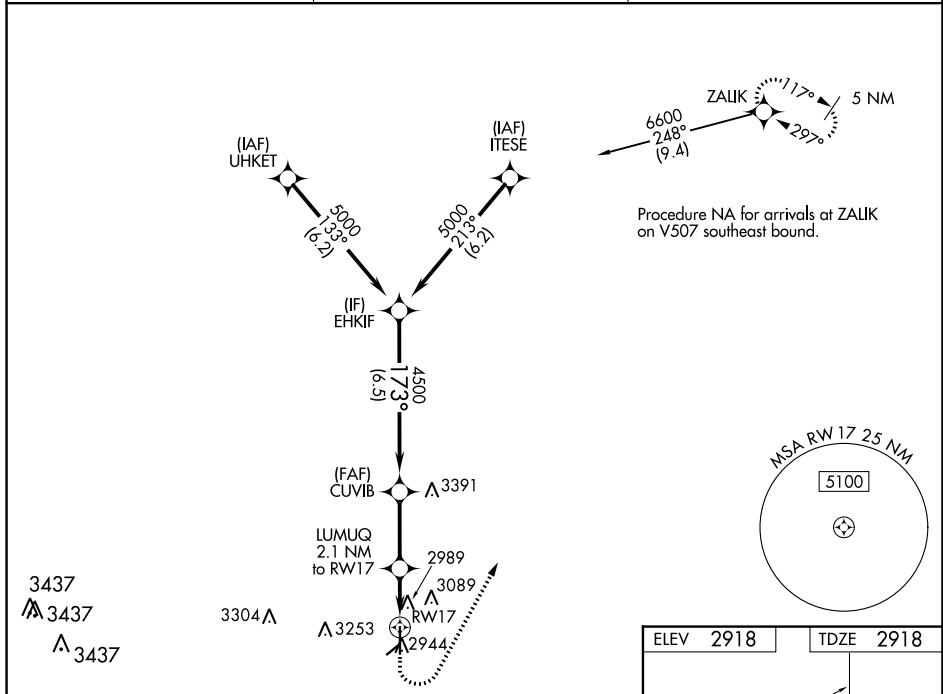
⚠ Circling NA to Rwy 4 and 22. For uncompensated Baro-VNAV systems, LNAV/VNAV NA below -20°C or above 54°C.

MISSED APPROACH: Climb to 3400 then climbing left turn to 6000 direct ZALIK and hold.

AWOS-3
118.175

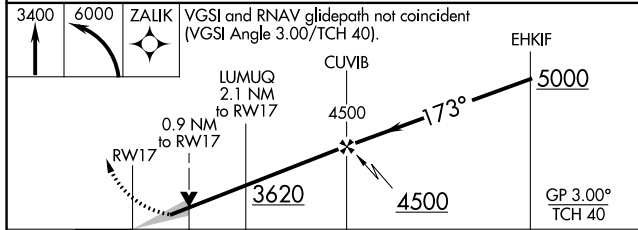
KANSAS CITY CENTER
126.95 379.2

UNICOM
122.8 (CTAF) 0

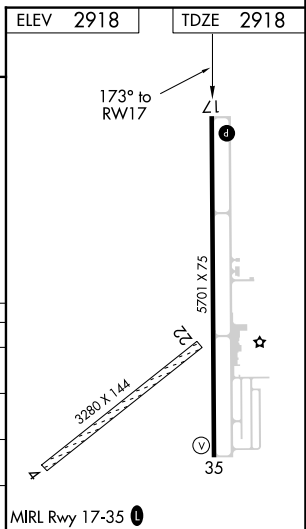


SC-2, 22 FEB 2024 to 21 MAR 2024

SC-2, 22 FEB 2024 to 21 MAR 2024



CATEGORY	A	B	C	D
LPV DA	3168-3/4	250 (300-3/4)		NA
LNAV/VNAV DA	3190-7/8	272 (300-7/8)		NA
LNAV MDA	3240-1	322 (400-1)		NA
C CIRCLING	3300-1 382 (400-1)	3580-1 662 (700-1)		NA



WAAS CH 77633 W35A	APP CRS 353°	Rwy Idg TDZE Apt Elev	5701 2918 2918
--	------------------------	-----------------------------	---

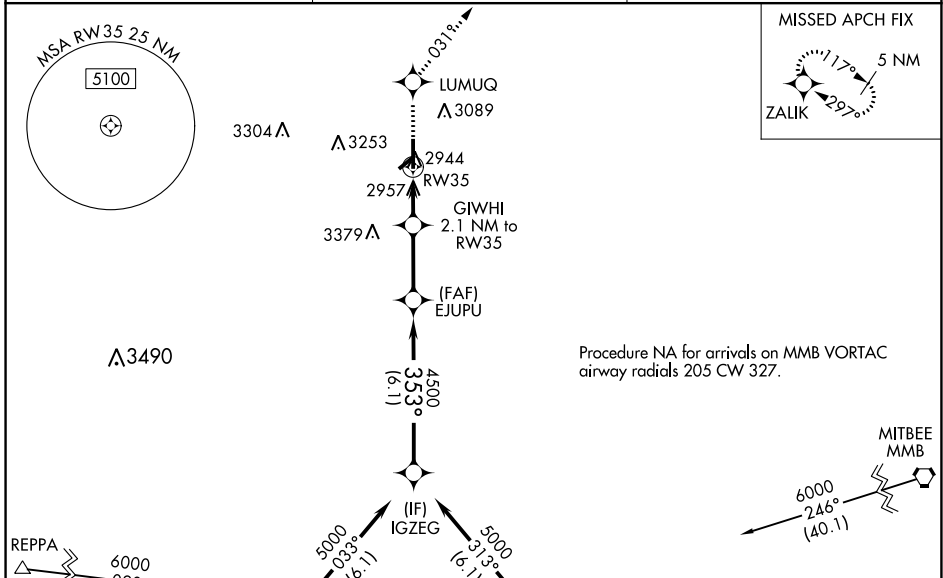
RNAV (GPS) RWY 35

PERRYTON OCHILTREE COUNTY (PYX)

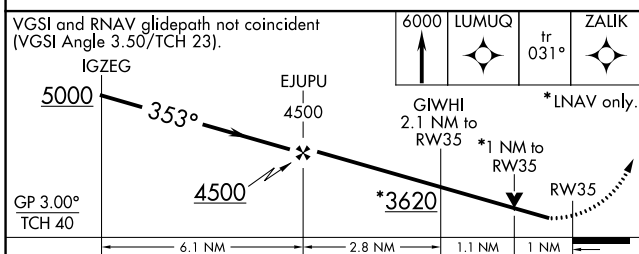
▼ Baro-VNAV and VDP NA when using Gage altimeter setting. For uncompensated Baro-VNAV systems, LNAV/VNAV NA below -20°C (-4°F) or above 54°C (130°F).
▲ When local altimeter setting not received, use Gage altimeter setting and increase all DAs 208 feet and MDA 220 feet; increase LPV and LNAV/VNAV Cats A and B visibility ¼ miles and Circling Cat B visibility ¼ mile. DME/DME RNP -0.3 NA. Helicopter visibility reduction below ¼ SM NA. Circling NA to Rws 4 and 22.

MISSED APPROACH: Climb to 6000 direct LUMUQ and on track 031° to ZALIK and hold.

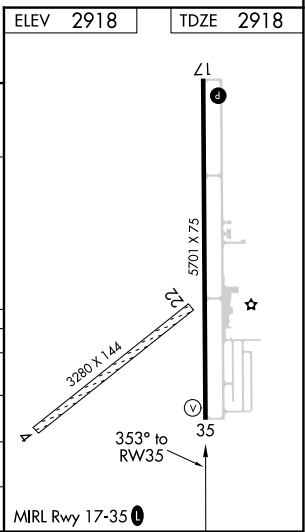
AWOS-3 118.175	KANSAS CITY CENTER 126.95 379.2	UNICOM 122.8 (CTAF) 0
--------------------------	---	---------------------------------



VGSI and RNAV glidepath not coincident (VGSI Angle 3.50/TCH 23).
 IGZEG
 GP 3.00° TCH 40
 *LNNAV only.



CATEGORY	A	B	C	D
LPV DA	3168-7/8	250 (300-7/8)		NA
LNAV/VNAV DA	3168-7/8	250 (300-7/8)		NA
LNAV MDA	3320-1	402 (500-1)		NA
C CIRCLING	3320-1 402 (500-1)	3580-1 662 (700-1)		NA



SC-2, 22 FEB 2024 to 21 MAR 2024

SC-2, 22 FEB 2024 to 21 MAR 2024