

LOC/DME I-VQO <b>111.1</b> Chan 48	APP CRS <b>075°</b>	Rwy Idg <b>3502</b> TDZE <b>8</b> Apt Elev <b>8</b>
--	------------------------	---

# ILS or LOC RWY 7

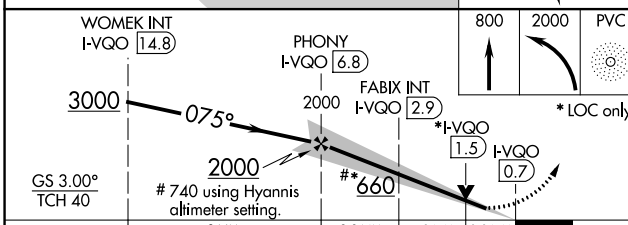
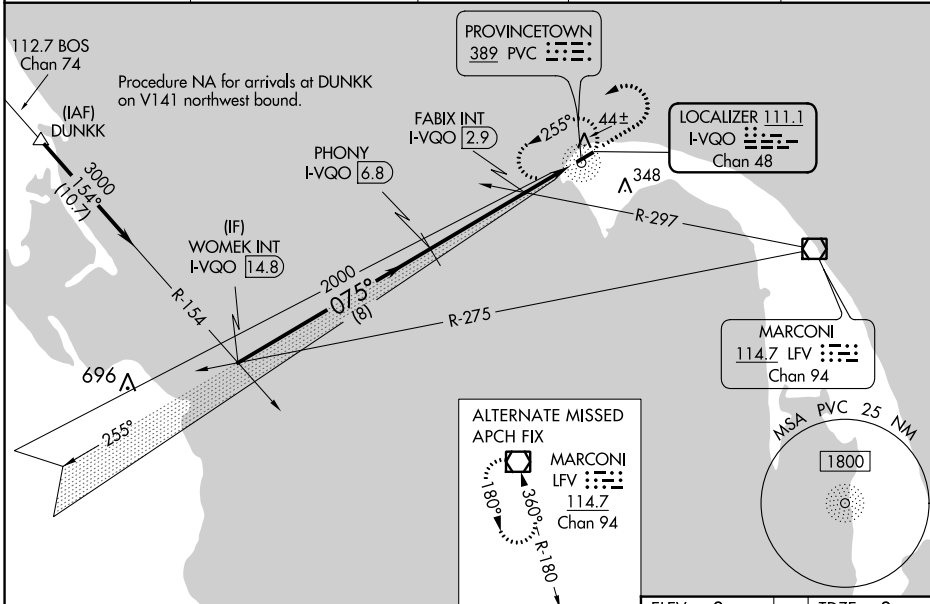
PROVINCETOWN MUNI (PVC)

DME required for LOC only, ADF.

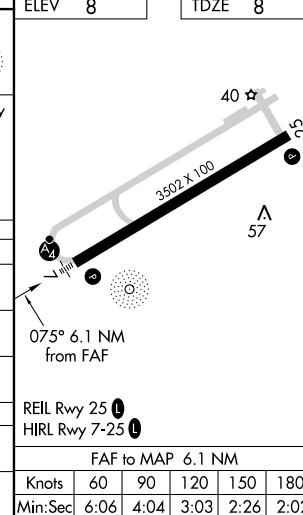
**NA** Inop table does not apply to S-ILS 7. When local altimeter setting not received, use Hyannis altimeter setting and increase all DA to 271 and all MDA 80 feet: increase S-LOC 7 and FABIX fix minimums S-LOC 7 all Cats visibility 1/4 SM. VDP NA when using Hyannis altimeter setting. For inop ALS when using Hyannis altimeter setting, increase S-ILS 7 all Cats visibility to 7/8 SM.

**MALSF** MISSED APPROACH: Climb to 800 then climbing left turn to 2000 direct PVC NDB and hold, continue climb-in-hold to 2000.

AWOS-3PT <b>119.275</b>	BOSTON APP CON ★ <b>118.2</b>	CLNC DEL <b>120.65</b>	UNICOM <b>122.8</b> (CTAF)	<b>122.85</b> <b>0</b>
----------------------------	----------------------------------	---------------------------	-------------------------------	------------------------



CATEGORY	A	B	C	D
S-ILS 7	208-3/4	200 (200-3/4)		NA
S-LOC 7	660-3/4	652 (700-3/4)		NA
<b>C</b> CIRCLING	660-1	652 (700-1)		NA
FABIX FIX MINIMUMS (DUAL VOR RECEIVERS OR DME REQUIRED)				
S-LOC 7	320-3/4	312 (400-3/4)		NA
<b>C</b> CIRCLING	460-1 452 (500-1)	660-1 652 (700-1)		NA



NDB PVC	APP CRS	Rwy Idg	<b>3502</b>
<b>389</b>	<b>247°</b>	TDZE	<b>8</b>
		Apt Elev	<b>8</b>

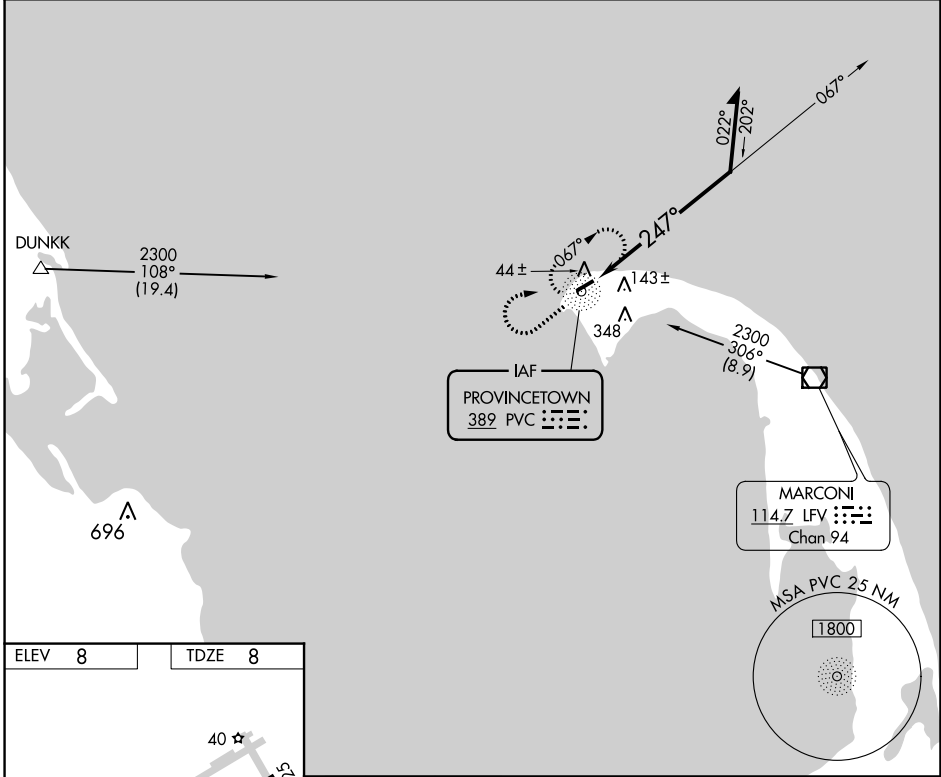
# NDB RWY 25

PROVINCETOWN MUNI (PVC)

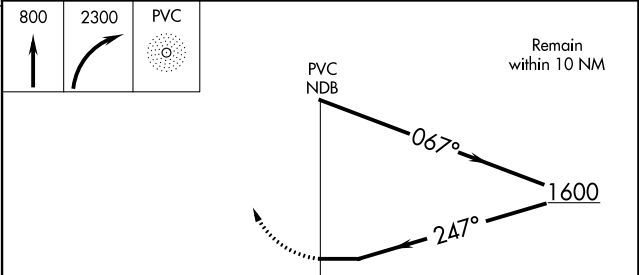
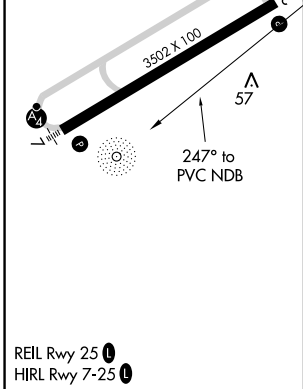
**⚠** Rwy 25 helicopter visibility reduction below 1 SM NA. Straight-in Rwy 25 NA at night, Circling Rwy 25 NA at night. When local altimeter setting not received, use Hyannis altimeter setting and increase all MDA 80 feet.

**⚠** MISSED APPROACH: Climb to 800 then climbing right turn to 2300 direct PVC NDB and hold.

AWOS-3PT	BOSTON APP CON ★	CLNC DEL	UNICOM	
<b>119.275</b>	<b>118.2</b>	<b>120.65</b>	<b>122.8</b> (CTAF)	<b>122.85</b> <b>0</b>



ELEV	<b>8</b>	TDZE	<b>8</b>
------	----------	------	----------



CATEGORY	A	B	C	D
S-25	500-1	492 (500-1)		NA
<b>C</b> CIRCLING	500-1	660-1		NA
	492 (500-1)	652 (700-1)		

NE-1, 22 FEB 2024 to 21 MAR 2024

NE-1, 22 FEB 2024 to 21 MAR 2024

APP CRS	Rwy Idg	<b>3502</b>
<b>255°</b>	TDZE	<b>8</b>
	Apt Elev	<b>8</b>

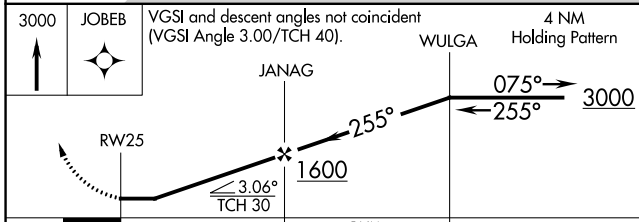
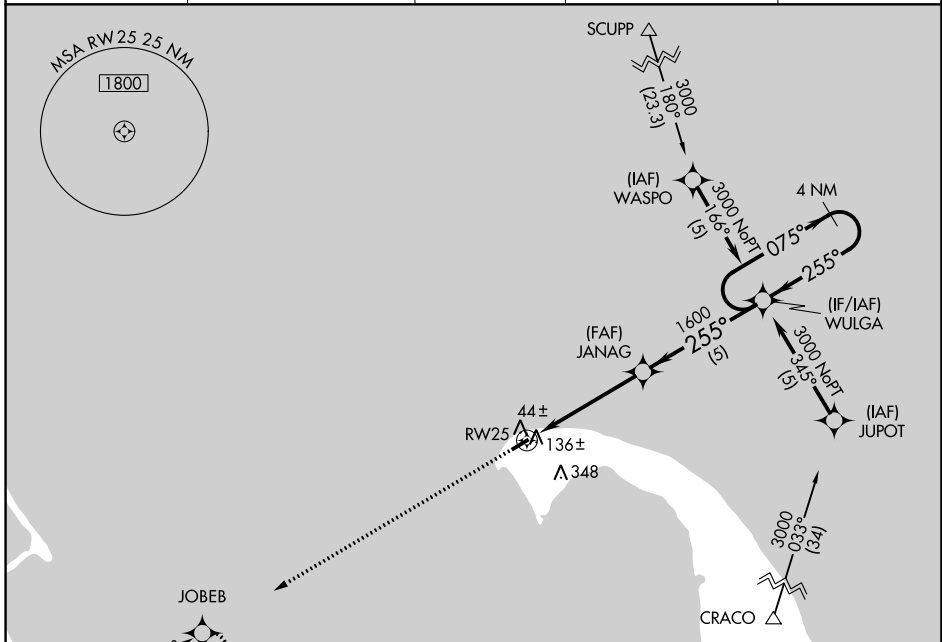
# RNAV (GPS) RWY 25

PROVINCETOWN MUNI (PVC)

**⚠** DME/DME RNP-0.3 NA. When local altimeter setting not received, use Hyannis altimeter setting and increase all MDA 80 feet. Rwy 25 helicopter visibility reduction below 1 SM NA. Straight-in Rwy 25 NA at night, Circling Rwy 25 NA at night.

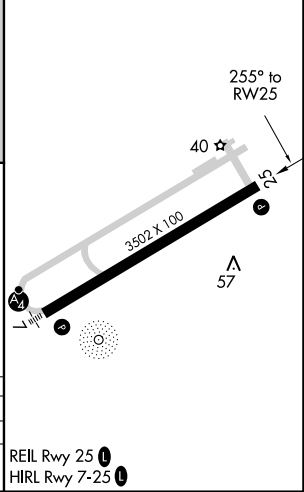
**⚠** MISSED APPROACH: Climb to 3000 direct JOBEB and hold.

AWOS-3PT <b>119.275</b>	BOSTON APP CON ★ <b>118.2</b>	CLNC DEL <b>120.65</b>	UNICOM <b>122.8</b> (CTAF)	<b>122.85</b> <b>⓪</b>
----------------------------	----------------------------------	---------------------------	-------------------------------	------------------------



CATEGORY	A	B	C	D
LNNAV MDA	400-1	392 (400-1)		NA
<b>⓪</b> CIRCLING	460-1 452 (500-1)	660-1 652 (700-1)		NA

ELEV <b>8</b>	TDZE <b>8</b>
---------------	---------------



NE-1, 22 FEB 2024 to 21 MAR 2024

NE-1, 22 FEB 2024 to 21 MAR 2024

WAAS CH <b>86738</b> W07A	APP CRS <b>075°</b>	Rwy Idg TDZE Apt Elev	<b>3502</b> <b>8</b> <b>8</b>
---------------------------------	------------------------	-----------------------------	-------------------------------------

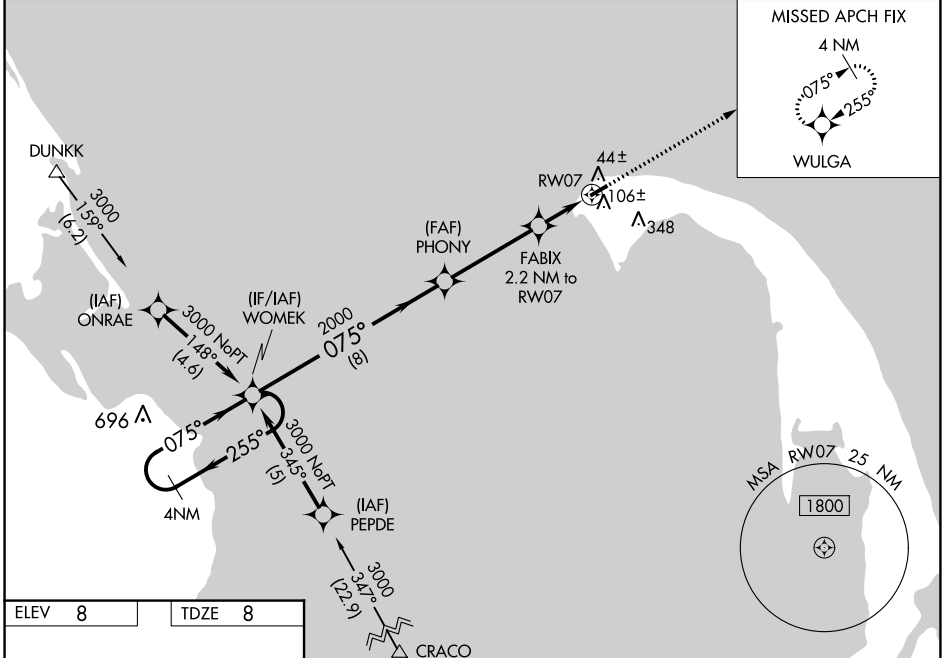
# RNAV (GPS) RWY 7

PROVINCETOWN MUNI (PVC)

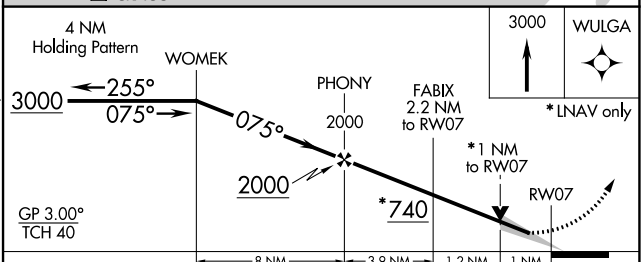
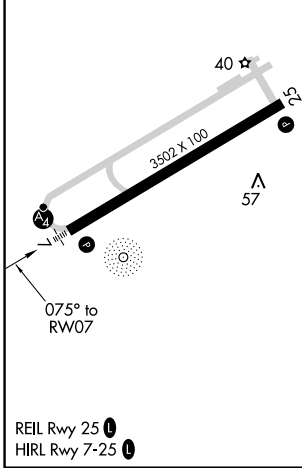
**⚠** For uncompensated Baro-VNAV systems, LNAV/VNAV NA below -15°C (5°F) or above 54°C (130°F). DME/DME RNP-0.3 NA. Inop table does not apply to LPV Cats A and B. When local altimeter setting not received, use Hyannis altimeter setting: increase LPV DA to 271, increase LNAV/VNAV DA to 331, and Cat A/B visibility 1/8 mile and all MDA 80 feet. For inop MALSF when using Hyannis altimeter setting, increase LPV Cat A/B visibility to 7/8 mile. Baro-VNAV and VDP NA when using Hyannis altimeter setting.

**MALSF**  
**MISSED APPROACH:**  
Climb to 3000 direct WULGA and hold.

AWOS-3PT <b>119.275</b>	BOSTON APP CON ★ <b>118.2</b>	CLNC DEL <b>120.65</b>	UNICOM <b>122.8 (CTAF)</b>	<b>122.85</b> <b>⓪</b>
----------------------------	----------------------------------	---------------------------	-------------------------------	------------------------



ELEV <b>8</b>	TDZE <b>8</b>
---------------	---------------



CATEGORY	A	B	C	D
LPV DA	208-3/4	200 (200-3/4)		NA
LNAV/VNAV DA	268-3/4	260 (300-3/4)		NA
LNAV MDA	360-3/4	352 (400-3/4)		NA
<b>C</b> CIRCLING	460-1 452 (500-1)	660-1 652 (700-1)		NA

NE-1, 22 FEB 2024 to 21 MAR 2024

NE-1, 22 FEB 2024 to 21 MAR 2024