

WAAS CH <b>42615</b> <b>W15A</b>	APP CRS <b>146°</b>	Rwy Idg TDZE Apt Elev <b>3999</b> <b>1025</b> <b>1025</b>
--	------------------------	--

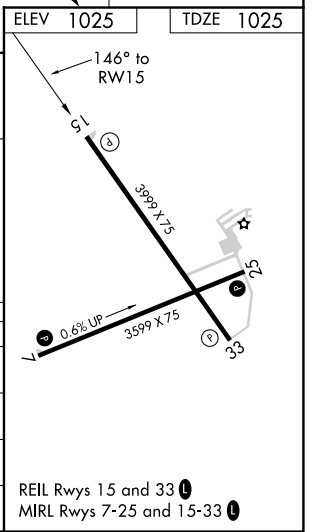
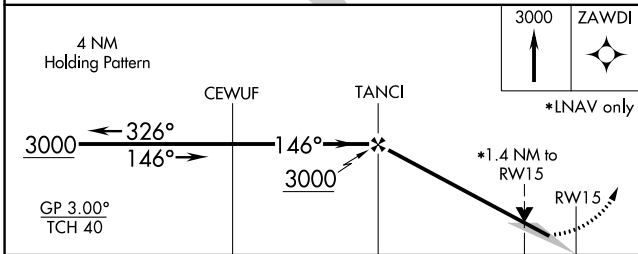
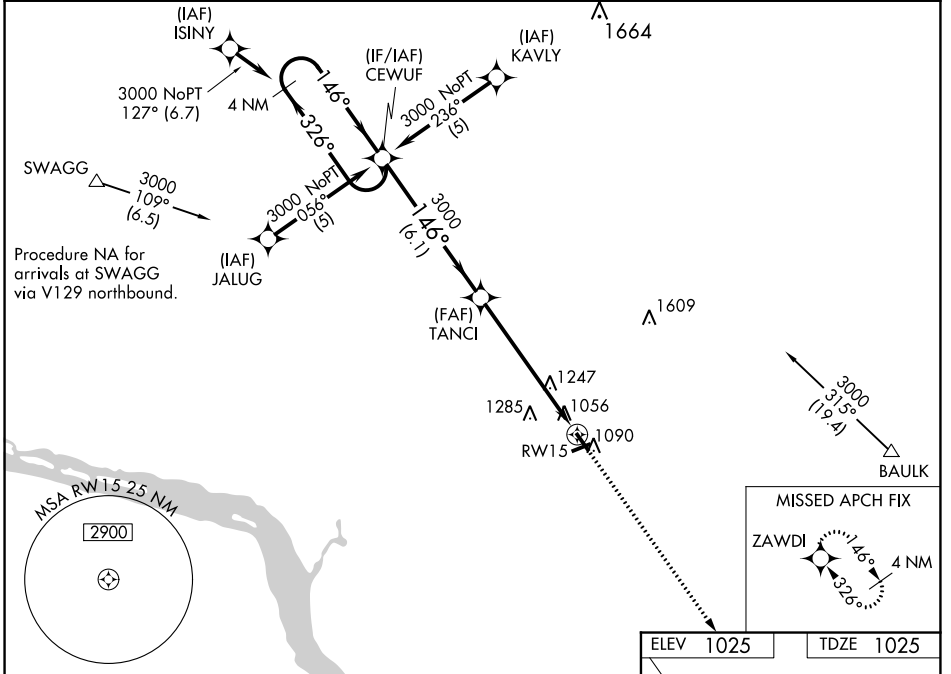
# RNAV (GPS) RWY 15

PLATTEVILLE MUNI (PVB)

**⚠** For uncompensated Baro-VNAV systems, LNAV/VNAV NA below -17°C (2°F) or above 54°C (130°F).  
**⚠** DME/DME RNP-0.3 NA. When local altimeter setting not received, use Dubuque altimeter setting and increase LPV DA to 1331 feet; increase LNAV/VNAV DA to 1394 feet and all Cats visibilities ¼ SM; increase all MDAs 60 feet, increase LNAV and Circling Cat C visibility ¼ SM. Baro-VNAV and VDP NA when using Dubuque altimeter setting.

MISSED APPROACH:  
Climb to 3000 direct ZAWDI and hold.

AWOS-3 <b>120.575</b>	CHICAGO CENTER <b>133.95 281.4</b>	UNICOM <b>122.7 (CTAF) 0</b>
--------------------------	---------------------------------------	---------------------------------



CATEGORY	A	B	C	D
LPV DA	1275-1	250 (300-1)		NA
LNAV/VNAV DA	1338-1	313 (400-1)		NA
LNAV MDA	1500-1	475 (500-1)	1500-1½ 475 (500-1½)	NA
CIRCLING	1500-1 475 (500-1)	1600-1 575 (600-1)	1600-1½ 575 (600-1½)	NA


EC-3, 19 MAY 2022 to 16 JUN 2022

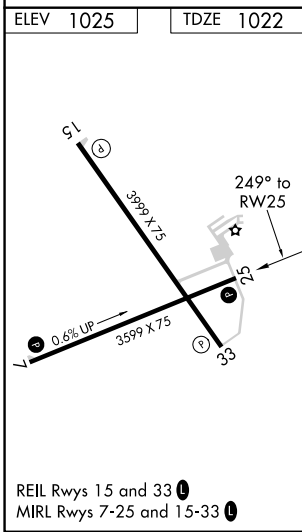
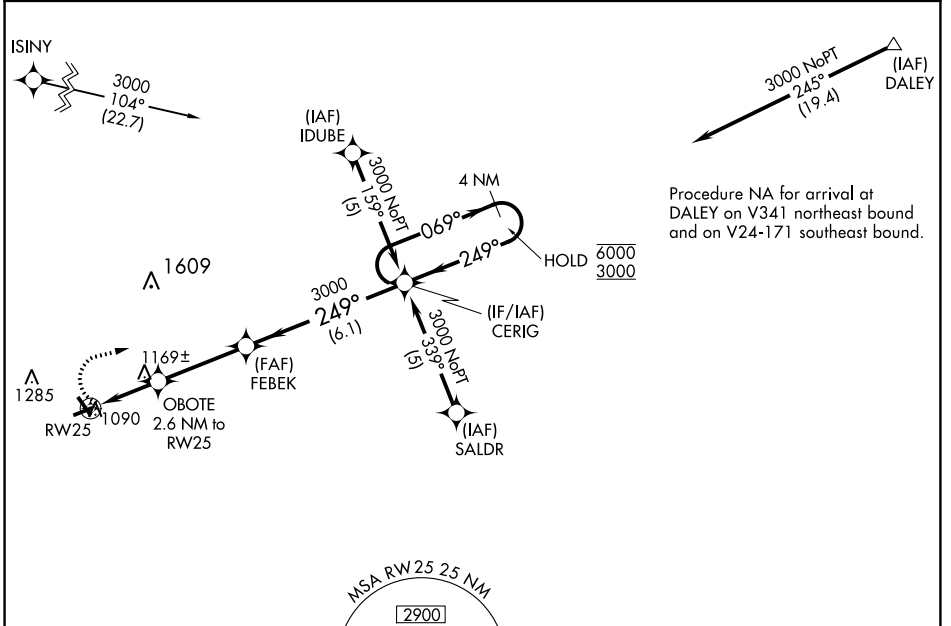
EC-3, 19 MAY 2022 to 16 JUN 2022

APP CRS	Rwy Idg	<b>3599</b>
<b>249°</b>	TDZE	<b>1022</b>
	Apt Elev	<b>1025</b>

# RNAV (GPS) RWY 25

PLATTEVILLE MUNI (PVB)

RNP APCH.		MISSED APPROACH: Climbing right turn to 3000 direct CERIG and hold.
 Rwy 25 helicopter visibility reduction below 1 SM NA.		
AWOS-3 <b>120.575</b>	CHICAGO CENTER <b>133.95 281.4</b>	UNICOM <b>122.7 (CTAF) 0</b>



3000 CERIG	VGSI and descent angles not coincident (VGSI Angle 3.00/TCH 28).		4 NM Holding Pattern	
FEBEK	CERIG			
OBOTE 2.6 NM to RW25	3000	6000 3000		
RW25	1900			
	2.6 NM	3.4 NM	6.1 NM	
CATEGORY	A	B	C	D
LNAV MDA	1440-1	418 (500-1)	1440-1¼ 418 (500-1¼)	NA
CIRCLING	1460-1 435 (500-1)	1600-1 575 (600-1)	1600-1½ 575 (600-1½)	NA

EC-3, 19 MAY 2022 to 16 JUN 2022

EC-3, 19 MAY 2022 to 16 JUN 2022

WAAS CH 40115 W33A	APP CRS 326°	Rwy Idg TDZE Apt Elev	3999 1025 1025
--------------------------	-----------------	-----------------------------	----------------------

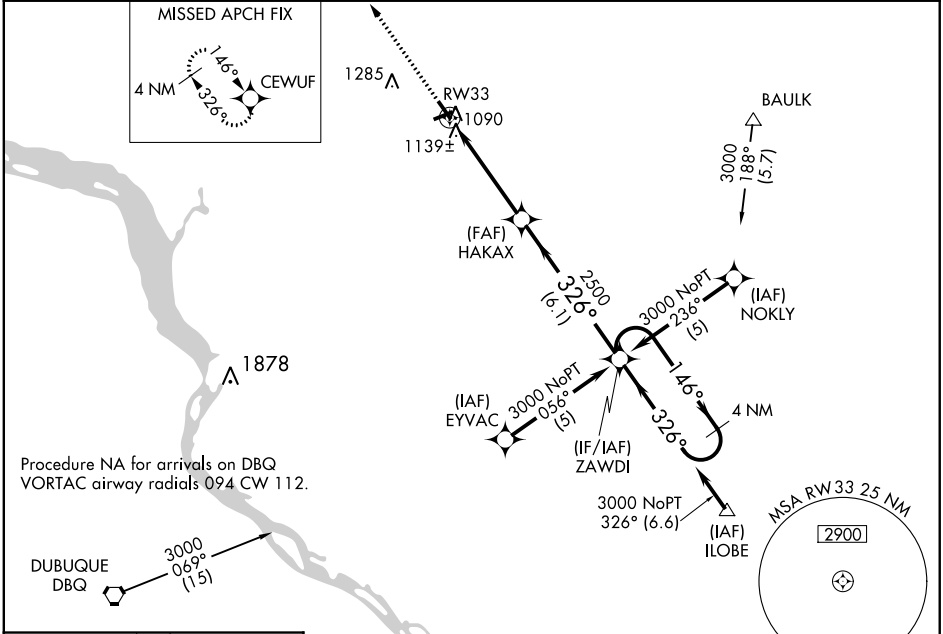
# RNAV (GPS) RWY 33

PLATTEVILLE MUNI (PVB)

**⚠** For uncompensated Baro-VNAV systems, LNAV/VNAV NA below -17°C (2°F) or above 54°C (130°F). DME/DME RNP-0.3 NA. When local altimeter setting not received, use Dubuque altimeter setting and increase LPV DA to 1331 feet; increase LNAV/VNAV DA to 1497 feet and all Cats visibilities ¼ SM; increase all MDAs 60 feet, increase LNAV and Circling Cat C visibility ¼ SM. Baro-VNAV and VDP NA when using Dubuque altimeter setting.

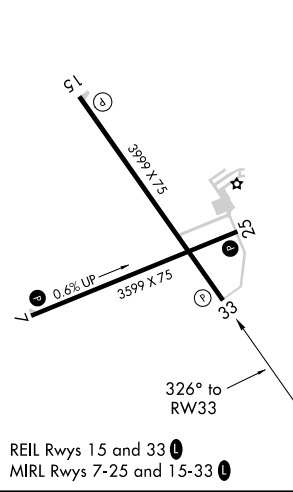
**⚠** MISSED APPROACH: Climb to 3000 direct CEWUF and hold.

AWOS-3 120.575	CHICAGO CENTER 133.95 281.4	UNICOM 122.7 (CTAF) <b>⓪</b>
-------------------	--------------------------------	---------------------------------

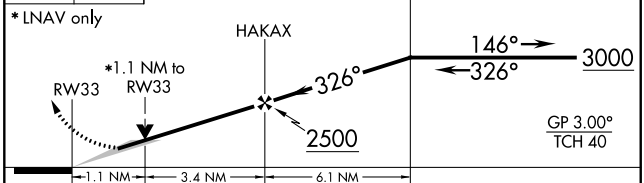


Procedure NA for arrivals on DBQ  
VORTAC airway radials 094 CW 112.

ELEV 1025	TDZE 1025
-----------	-----------



3000 CEWUF VGSI and RNAV glidepath not coincident (VGSI Angle 3.00/TCH 25). 4 NM Holding Pattern



CATEGORY	A	B	C	D
LPV DA	1275-1	250 (300-1)		NA
LNAV/VNAV DA	1441-1½	416 (500-1½)		NA
LNAV MDA	1400-1	375 (400-1)		NA
CIRCLING	1460-1 435 (500-1)	1600-1 575 (600-1)	1600-1½ 575 (600-1½)	NA

WAAS CH <b>82315</b> <b>W07A</b>	APP CRS <b>069°</b>	Rwy Idg TDZE Apt Elev	<b>3599</b> <b>1016</b> <b>1025</b>
--	------------------------	-----------------------------	---

# RNAV (GPS) RWY 7

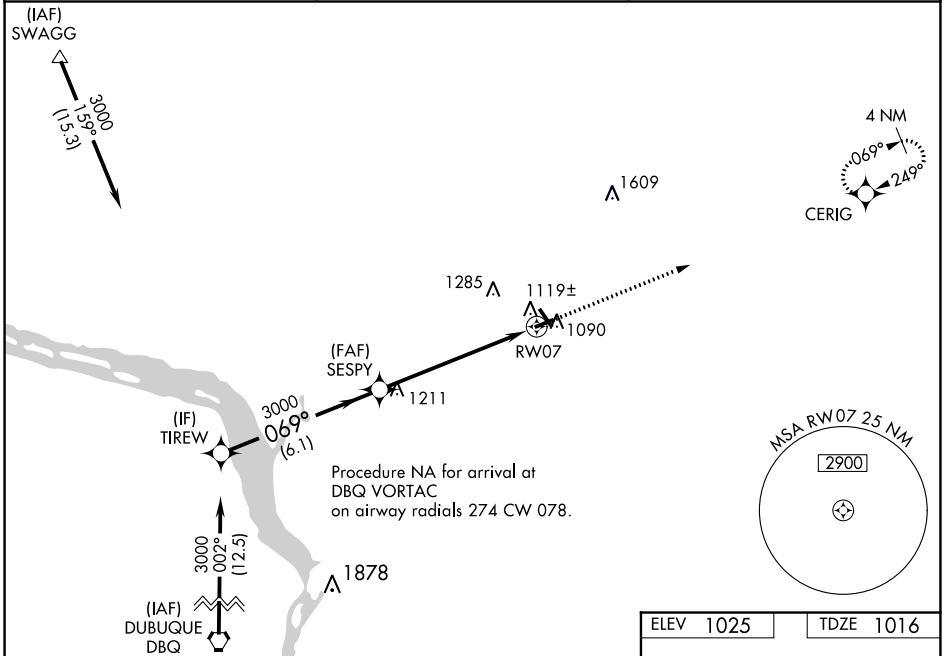
PLATTEVILLE MUNI (PVB)

RNP APCH.

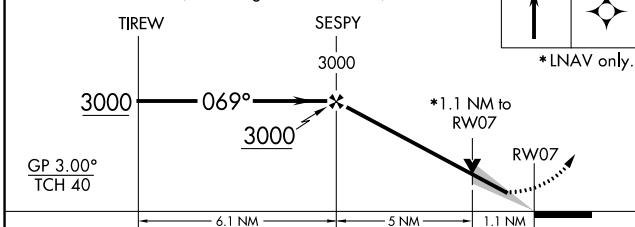
For uncompensated Baro-VNAV systems, LNAV/VNAV NA below -17°C or above 54°C.

MISSED APPROACH:  
Climb to 3000 direct CERIG and hold.

AWOS-3 <b>120.575</b>	CHICAGO CENTER <b>133.95 281.4</b>	UNICOM <b>122.7 (CTAF) 0</b>
--------------------------	---------------------------------------	---------------------------------



VGSI and RNAV glidepath not coincident (VGSI Angle 3.00/TCH 20).



CATEGORY	A	B	C	D
LPV DA	1283-1	267 (300-1)		NA
LNAV/VNAV DA	1406-1½	390 (400-1½)		NA
LNAV MDA	1380-1	364 (400-1)		NA
CIRCLING	1460-1 435 (500-1)	1600-1 575 (600-1)	1600-1½ 575 (600-1½)	NA

ELEV 1025	TDZE 1016
-----------	-----------

069° to RW07

REIL Rwy 15 and 33 0

MIRL Rwy 7-25 and 15-33 0

EC-3, 19 MAY 2022 to 16 JUN 2022

EC-3, 19 MAY 2022 to 16 JUN 2022