


| | | | |
|-------------------------------|------------------------|-----------------------------|---|
| LOC/DME I-JLS 110.3 | APP CRS 051° | Rwy Idg TDZE Apt Elev | 5002 193 193 |
|-------------------------------|------------------------|-----------------------------|---|

LOC RWY 5

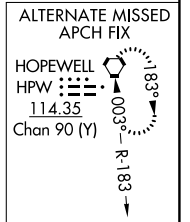
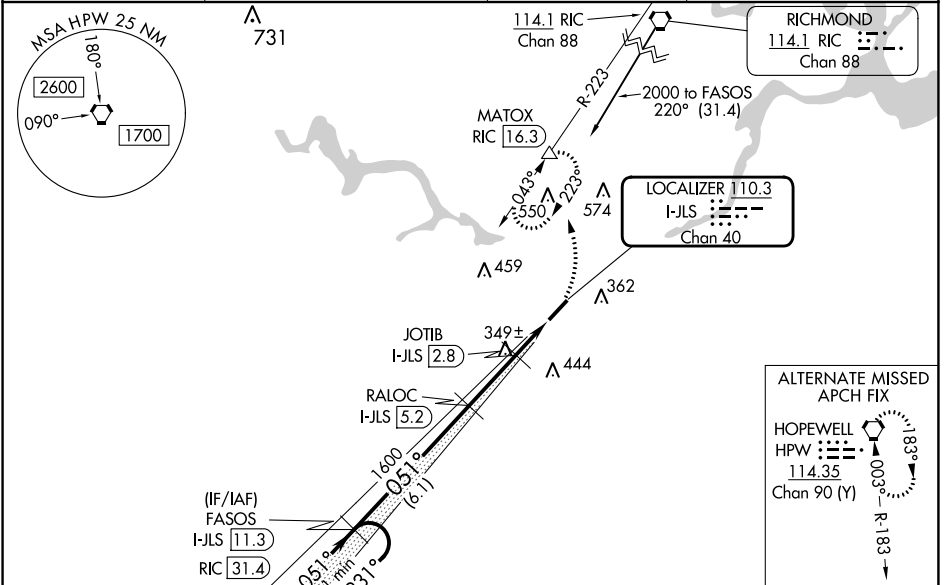
TRI CITIES EXEC/DINWIDDIE COUNTY (PTB)

⚠ **⚠** DME required. Helicopter visibility reduction below 3/4 SM NA. VDP NA when using Richmond Exec/Chesterfield County altimeter setting. When local altimeter setting not received, use Richmond Exec/Chesterfield County altimeter setting and increase all MDA 40 feet; increase S-LOC 5 Cat C visibility 1/8 mile and Circling Cat C visibility 1/4 mile. For inop ODALS, increase S-LOC 5 Cat C visibility to 1 1/8 mile. Inop table does not apply to S-LOC 5 Cat A and B. Inop table does not apply to S-LOC Cat A and B when using Richmond Exec/Chesterfield County altimeter setting.

ODALS  ...

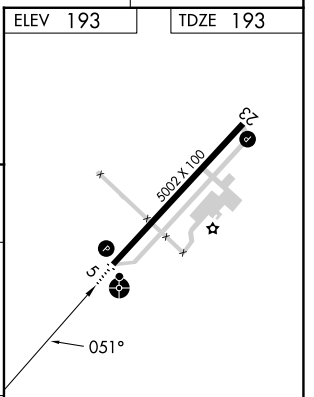
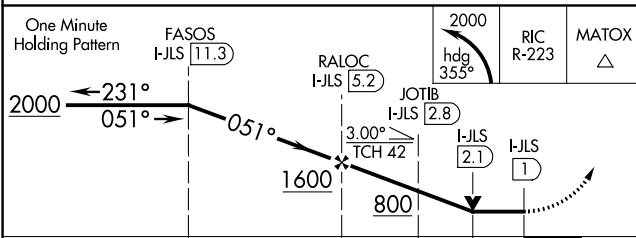
MISSED APPROACH:
Climbing left turn to 2000 on heading 355° and on RIC VORTAC R-223 to MATOX/RIC 16.3 DME and hold.

| | | | |
|--------------------------|--|-----------------------|---------------------------------|
| AWOS-3 133.325 | POTOMAC APP CON 126.75 307.2 | GCO 135.075 | UNICOM 122.7 (CTAF) 0 |
|--------------------------|--|-----------------------|---------------------------------|



| | |
|----------|----------|
| ELEV 193 | TDZE 193 |
|----------|----------|

DME REQUIRED



| | | | | | | |
|-------------------|-------------------|-------------|------------------------------|----|-----------------------|--------------------------|
| CATEGORY | A | B | C | D | MRL Rwy 5-23 0 | REIL Rwy 23 0 |
| S-5 | 600-1 407 (500-1) | | | NA | FAF to MAP 4.3 NM | |
| C CIRCLING | 680-1 | 487 (500-1) | 760-1 1/2 567 (600-1 1/2) | NA | Knots | 60 90 120 150 180 |
| | | | | | Min:Sec | 4:18 2:52 2:09 1:43 1:26 |

LOC RWY 5

NE-3, 22 FEB 2024 to 21 MAR 2024

NE-3, 22 FEB 2024 to 21 MAR 2024

| | | | |
|--|------------------------|-----------------------------|---|
| WAAS CH 86706 W23A | APP CRS 231° | Rwy Idg TDZE Apt Elev | 5002 191 193 |
|--|------------------------|-----------------------------|---|

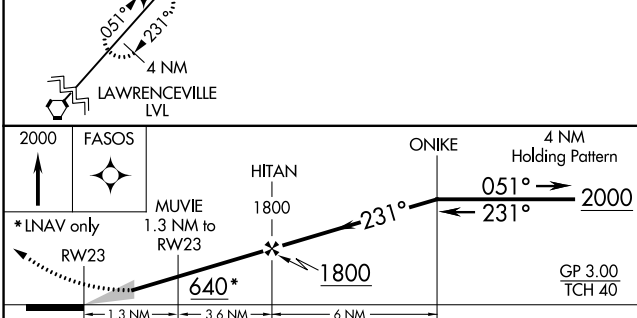
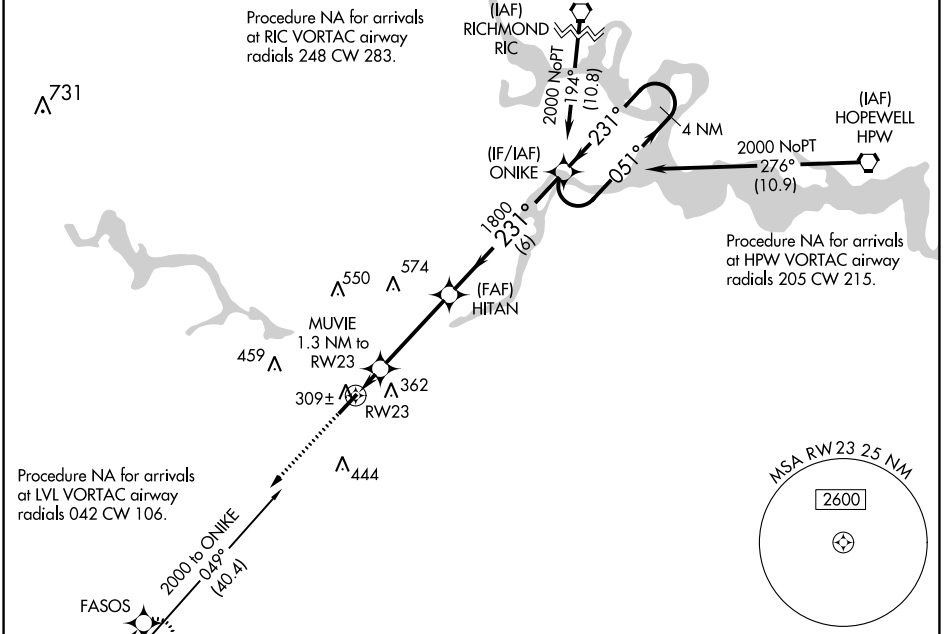
RNAV (GPS) RWY 23

TRI CITIES EXEC/DINWIDDIE COUNTY (PTB)

Baro-VNAV NA when using Richmond Exec/Chesterfield County altimeter setting. For uncompensated Baro-VNAV systems, LNAV/VNAV NA below -15°C (5°F) or above 54°C (130°F). DME/DME RNP-0.3 NA. When local altimeter setting not received, use Richmond Exec/Chesterfield County altimeter setting: increase LPV DA to 478 feet and LNAV/VNAV DA to 517 feet and all MDA 40 feet; increase LNAV/VNAV all Cats visibility and LNAV Cat C visibility 1/8 mile, and increase Circling Cat C visibility 1/4 mile.

MISSED APPROACH:
Climb to 2000 direct FASOS and hold.

| | | | |
|--------------------------|--|-----------------------|---------------------------------|
| AWOS-3 133,325 | POTOMAC APP CON 126.75 307.2 | GCO 135.075 | UNICOM 122.7 (CTAF) 0 |
|--------------------------|--|-----------------------|---------------------------------|



| | |
|----------|----------|
| ELEV 193 | TDZE 191 |
|----------|----------|

MIRL Rwy 5-23 0
REIL Rwy 23 0

| CATEGORY | A | B | C | D |
|-----------------|-------|-------------|------------------------------|----|
| LPV DA | 441-1 | 250 (300-1) | | NA |
| LNAV/VNAV DA | 480-1 | 289 (300-1) | | NA |
| LNAV MDA | 560-1 | 369 (400-1) | | NA |
| CIRCLING | 680-1 | 487 (500-1) | 760-1 1/2 567 (600-1 1/2) | NA |

NE-3, 22 FEB 2024 to 21 MAR 2024

NE-3, 22 FEB 2024 to 21 MAR 2024

| | | |
|--|------------------------|---|
| WAAS CH 70705 W05A | APP CRS 051° | Rwy Idg 5002 TDZE 193 Apt Elev 193 |
|--|------------------------|---|

RNAV (GPS) RWY 5

TRI CITIES EXEC/DINWIDDIE COUNTY (P/TB)

⚠ Inop table does not apply to LPV all Cats, LNAV/VNAV all Cats and LNAV Cat A and B. For uncompensated Baro-VNAV systems, LNAV/VNAV NA below -15°C (5°F) or above 54°C (130°F). Baro-VNAV and VDP NA when using Richmond Exec/Chesterfield County altimeter setting. DME/DME RNP-0.3 NA. Helicopter visibility reduction below ¼ SM NA. When local altimeter setting not received, use Richmond Exec/Chesterfield County altimeter setting; increase LPV DA to 534 feet and LNAV/VNAV DA to 546 feet and all MDA 40 feet; increase LNAV Cat C visibility ½ mile and increase Circling Cat C visibility ¼ mile. For inop ODALS when using Richmond Exec/Chesterfield County altimeter setting, increase LPV all Cats visibility and LNAV/VNAV all Cats visibility to 1½ mile. Inop table does not apply to LNAV Cat A and B when using Richmond Exec/Chesterfield County altimeter setting. For inop ODALS, increase LNAV Cat C visibility to 1½ mile.

ODALS

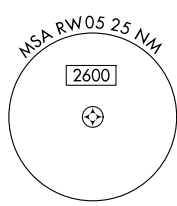
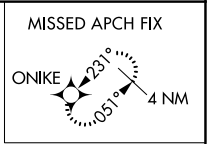
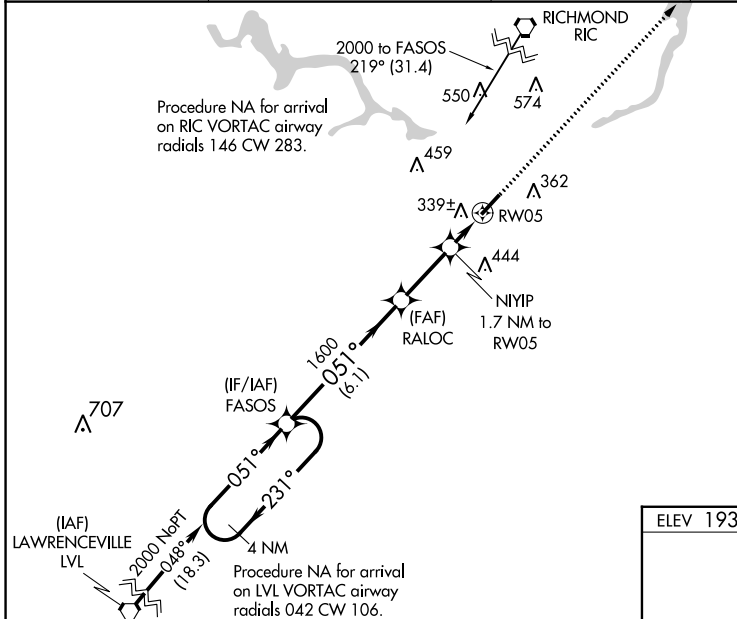
MISSED APPROACH: Climb to 2000 direct ONIKE and hold.

| |
|--------------------------|
| AWOS-3 133.325 |
|--------------------------|

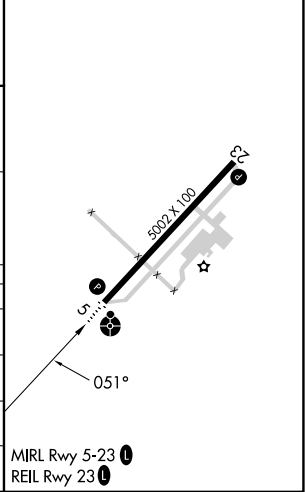
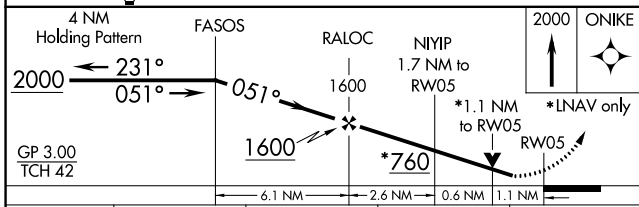
| |
|--|
| POTOMAC APP CON 126.75 307.2 |
|--|

| |
|-----------------------|
| GCO 135.075 |
|-----------------------|

| |
|---------------------------------|
| UNICOM 122.7 (CTAF) 0 |
|---------------------------------|



| | |
|----------|----------|
| ELEV 193 | TDZE 193 |
|----------|----------|



| CATEGORY | A | B | C | D |
|--------------|-------|-------------|------------------------|----|
| LPV DA | 497-1 | 304 (400-1) | | NA |
| LNAV/VNAV DA | 509-1 | 316 (400-1) | | NA |
| LNAV MDA | 600-1 | 407 (500-1) | | NA |
| CIRCLING | 680-1 | 487 (500-1) | 760-1½ 567 (600-1½) | NA |

NE-3, 22 FEB 2024 to 21 MAR 2024

NE-3, 22 FEB 2024 to 21 MAR 2024

| | | | |
|--|------------------------|-----------------------------|---|
| VORTAC HPW 114.35 Chan 90 (Y) | APP CRS 252° | Rwy Idg TDZE Apt Elev | 5002 191 193 |
|--|------------------------|-----------------------------|---|

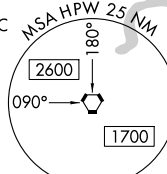
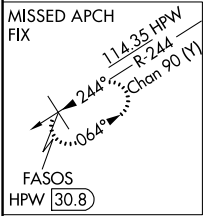
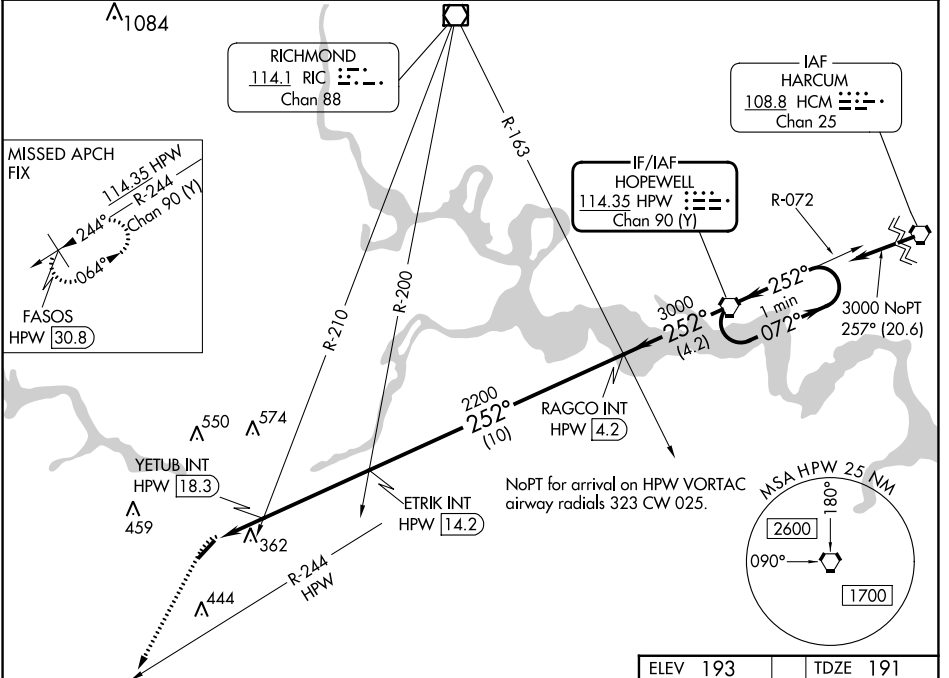
VOR RWY 23

TRI CITIES EXEC/DINWIDDIE COUNTY (PTB)

⚠ When local altimeter setting not received, use Richmond Exec/Chesterfield County altimeter setting and increase all MDA 40 feet; increase S-23 Cat C and Circling Cat C visibility 1/8 mile and YETUB fix minimums S-23 Cat C visibility 1/8 mile and Circling Cat C visibility 1/4 mile. DME required.

MISSED APPROACH: Climb to 2000 on heading 214° and HPW R-244 to FASOS/HPW 30.8 DME and hold.

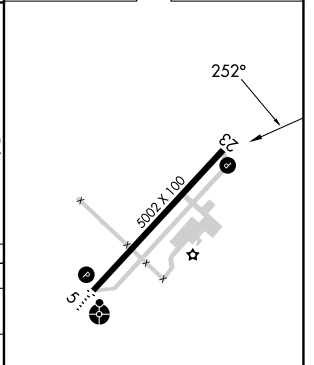
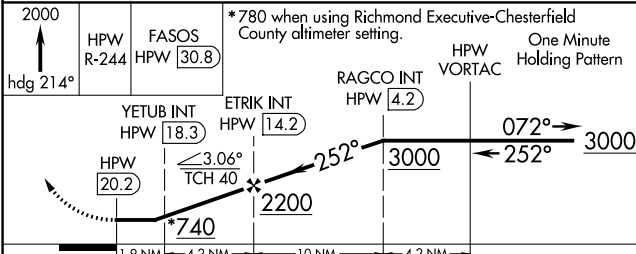
| | | | |
|--------------------------|--|-----------------------|---------------------------------|
| AWOS-3 133.325 | POTOMAC APP CON 126.75 307.2 | GCO 135.075 | UNICOM 122.7 (CTAF) 0 |
|--------------------------|--|-----------------------|---------------------------------|



NE-3, 22 FEB 2024 to 21 MAR 2024

NE-3, 22 FEB 2024 to 21 MAR 2024

| | |
|----------|----------|
| ELEV 193 | TDZE 191 |
|----------|----------|



| CATEGORY | A | B | C | D |
|---|-------|-------------|------------------------------|----|
| S-23 | 740-1 | 549 (600-1) | 740-1 1/8 549 (600-1 1/8) | NA |
| C CIRCLING | 740-1 | 547 (600-1) | 760-1 1/8 567 (600-1 1/8) | NA |
| YETUB FIX MINIMUMS (DUAL VOR RECEIVERS OR DME REQUIRED) | | | | |
| S-23 | 620-1 | 429 (500-1) | 620-1 1/4 429 (500-1 1/4) | NA |
| C CIRCLING | 680-1 | 487 (500-1) | 760-1 1/2 567 (600-1 1/2) | NA |

| | |
|-------------------|--------------------------|
| MIRL Rwy 5-23 0 | REIL Rwy 23 0 |
| FAF to MAP 6.1 NM | |
| Knots | 60 90 120 150 180 |
| Min:Sec | 6:06 4:04 3:03 2:26 2:02 |

VOR RWY 23