

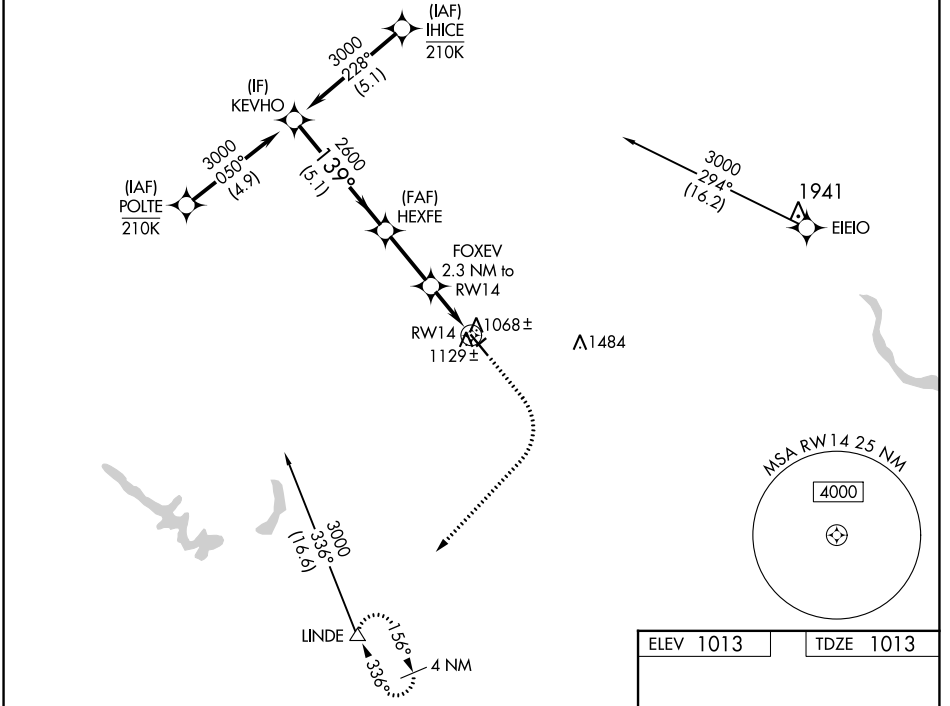
WAAS CH <b>99345</b> <b>W14A</b>	APP CRS <b>139°</b>	Rwy Idg TDZE Apt Elev	<b>5500</b> <b>1013</b> <b>1013</b>
--	------------------------	-----------------------------	---

# RNAV (GPS) RWY 14

PERRY MUNI (PRO)

RNP APCH - GPS.	MISSED APPROACH: Climb to 1500 then climbing right turn to 3500 direct LINDE and hold.
<p><b>⚠</b> Circling NA to Rwys 4 and 22. For uncompensated Baro-VNAV systems, LNAV/VNAV NA below -17°C or above 54°C.</p>	

AWOS-3 <b>118.0</b>	DES MOINES APP CON <b>123.9 360.7</b>	UNICOM <b>122.8 (CTAF) 0</b>
------------------------	--	---------------------------------

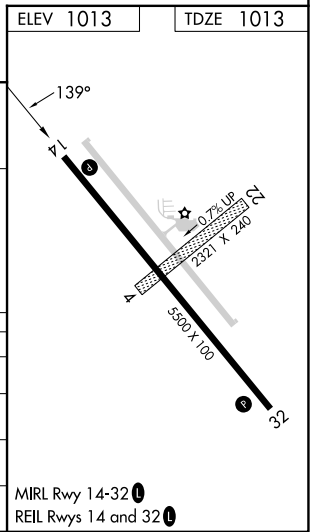


NC-3, 22 FEB 2024 to 21 MAR 2024

NC-3, 22 FEB 2024 to 21 MAR 2024

VGSI and RNAV glidepath not coincident (VGSI Angle 2.83/TCH 32).

KEYVHO	HEXFE	FOXEY	LINDE
3000	2600	1780	1500 / 3500
GP 3.00° TCH 40			
5.1 NM	2.6 NM	1.2 NM	1.1 NM
A	B	C	D
LPV DA	1263-3/4	250 (300-3/4)	
LNAV/VNAV DA	1310-7/8	297 (300-7/8)	
LNAV MDA	1380-1	367 (400-1)	
<b>C</b> CIRCLING	1440-1 427 (500-1)	1480-1 467 (500-1)	1600-1 1/2 587 (600-1 1/2)    1840-2 3/4 827 (900-2 3/4)



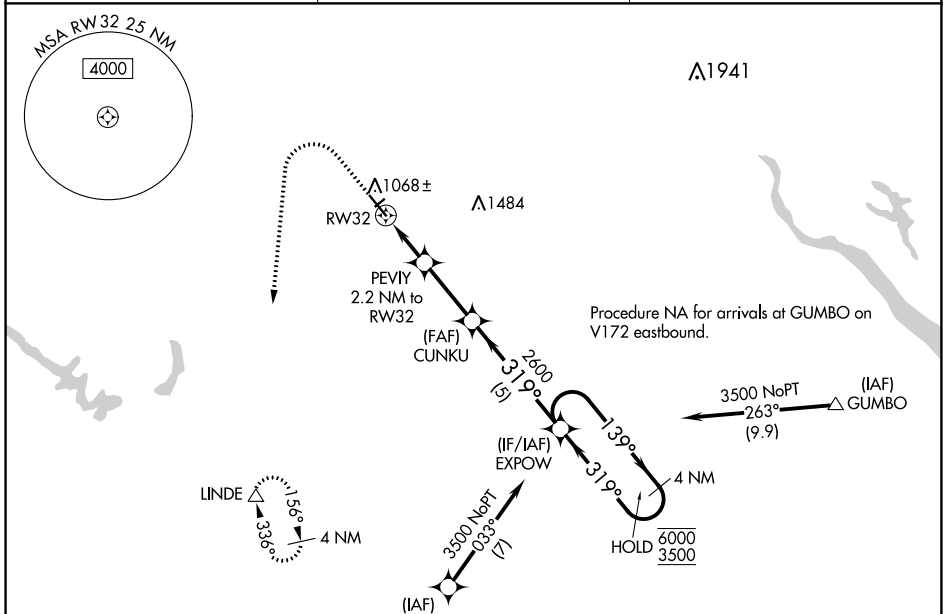
WAAS CH <b>53345</b> <b>W32A</b>	APP CRS <b>319°</b>	Rwy Idg TDZE Apt Elev	<b>5500</b> <b>1010</b> <b>1013</b>
--	------------------------	-----------------------------	---

# RNAV (GPS) RWY 32

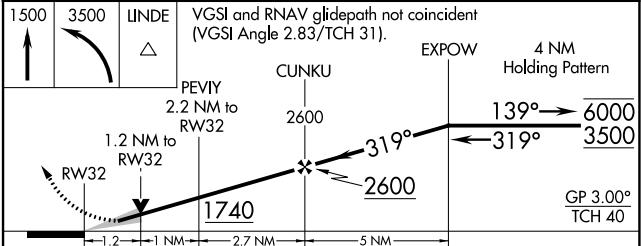
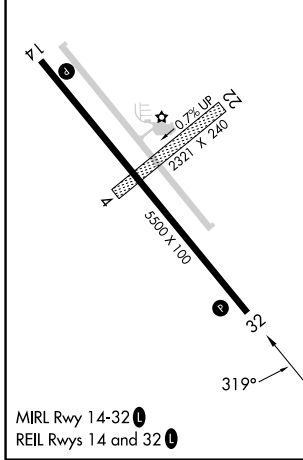
PERRY MUNI (P.R.O)

RNP APCH - GPS.	MISSED APPROACH: Climb to 1500 then climbing left turn to 3500 direct LINDE and hold.
<p>⚠ Circling NA to Rws 4 and 22. For uncompensated Baro-VNAV systems, LNAV/VNAV NA below -17°C or above 54°C.</p>	

AWOS-3 <b>118.0</b>	DES MOINES APP CON <b>123.9 360.7</b>	UNICOM <b>122.8 (CTAF) 0</b>
------------------------	--	---------------------------------



ELEV 1013	TDZE 1010
-----------	-----------



CATEGORY	A	B	C	D
LPV DA		1260-3/4	250 (300-3/4)	
LNAV/VNAV DA		1310-7/8	300 (300-7/8)	
LNAV MDA		1380-1	370 (400-1)	
<input checked="" type="checkbox"/> CIRCLING	1440-1 427 (500-1)	1480-1 467 (500-1)	1600-1 1/2 587 (600-1 1/2)	1840-2 3/4 827 (900-2 3/4)

NC-3, 22 FEB 2024 to 21 MAR 2024

NC-3, 22 FEB 2024 to 21 MAR 2024