

WAAS CH 53408 W18A	APP CRS 181°	Rwy Idg TDZE Apt Elev	4016 16 16
----------------------------------------	------------------------	-----------------------------	---------------------------------------

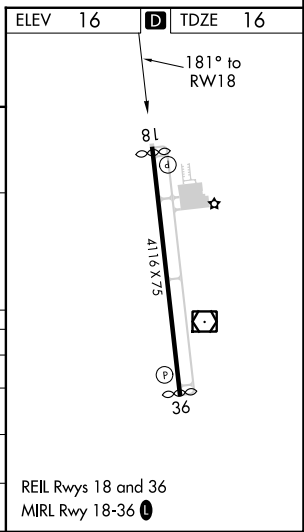
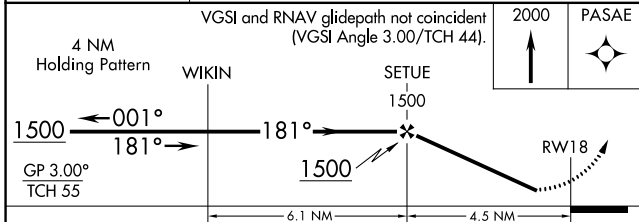
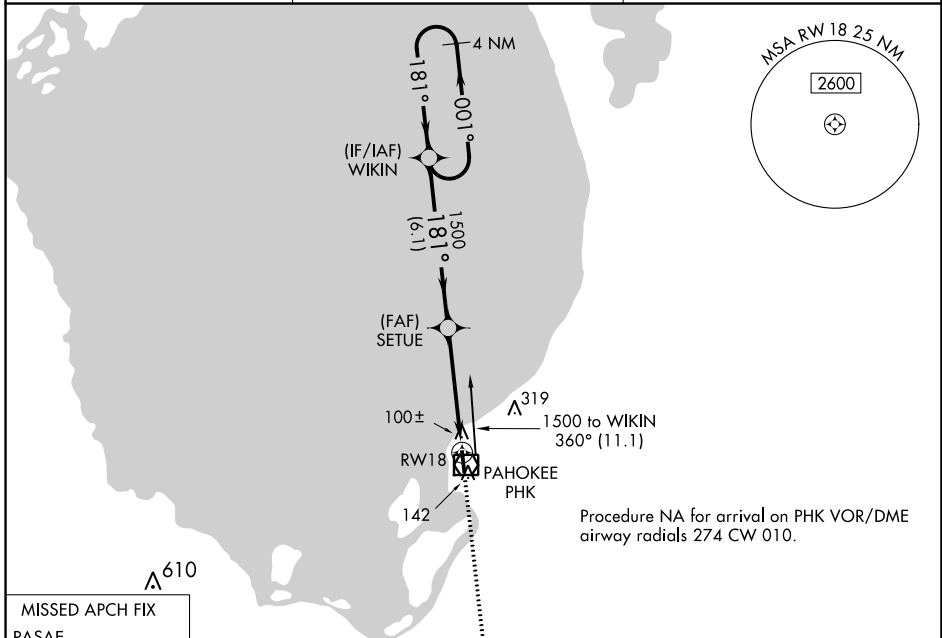
RNAV (GPS) RWY 18

PALM BEACH COUNTY GLADES (PHK)

⚠ Baro-VNAV NA. Rwy 18 helicopter visibility reduction below $\frac{3}{4}$ SM NA.
⚠ DME/DME RNP-0.3 NA. Use Palm Beach Intl altimeter setting, when not received procedure NA.

MISSED APPROACH: Climb to 2000 direct PASAE and hold.

PBI ASOS 123.75	PALM BEACH APP CON 125.2 317.4	UNICOM 122.8 (CTAF) 0
---------------------------	------------------------------------------	---------------------------------



CATEGORY	A	B	C	D
LPV DA	358-1 $\frac{1}{8}$		342 (400-1 $\frac{1}{8}$)	
LNAV/VNAV DA	342-1		326 (400-1)	
LNAV MDA	440-1 424 (500-1)		440-1 $\frac{1}{4}$ 424 (500-1 $\frac{1}{4}$)	
C CIRCLING	580-1 564 (600-1)		760-2 $\frac{1}{4}$ 744 (800-2 $\frac{1}{4}$)	

REIL Rwy 18 and 36
 MIRL Rwy 18-36 **0**

SE-3, 22 FEB 2024 to 21 MAR 2024

SE-3, 22 FEB 2024 to 21 MAR 2024

WAAS CH 56408 W36A	APP CRS 001°	Rwy Idg 4064 TDZE 16 Apt Elev 16
----------------------------------------	------------------------	-------------------------------------------------------------

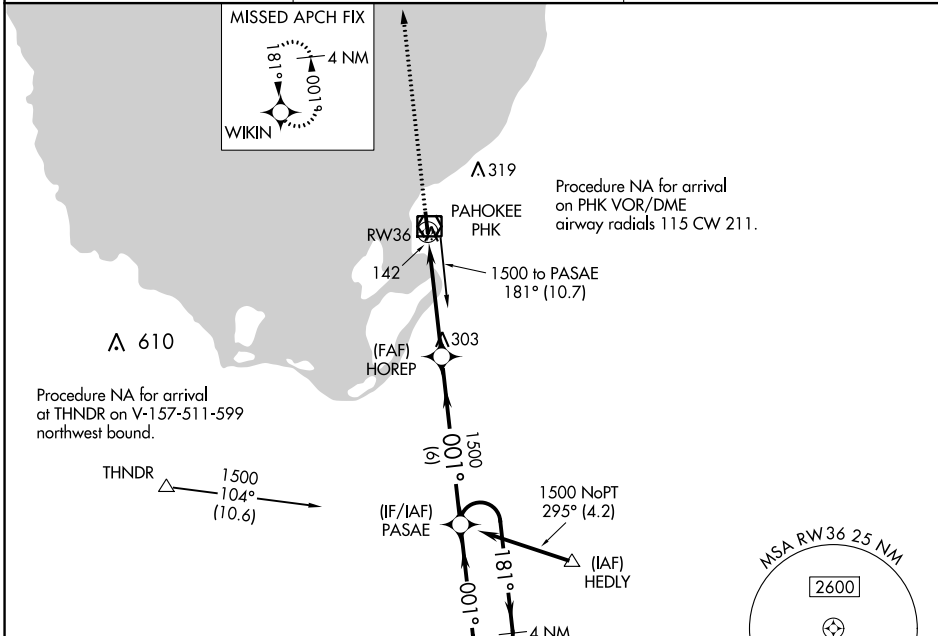
RNAV (GPS) RWY 36

PALM BEACH COUNTY GLADES (PHK)

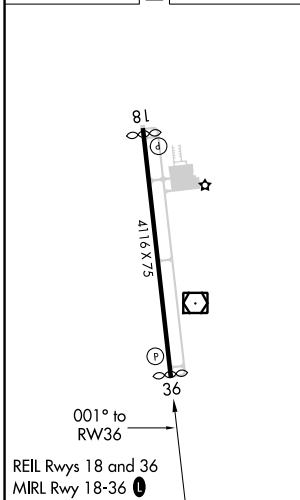
▽ Baro-VNAV NA. DME/DME RNP-0.3 NA.
△ NA Use Palm Beach Intl altimeter setting, when not received, procedure NA.

MISSED APPROACH: Climb to 2000 direct WIKIN and hold.

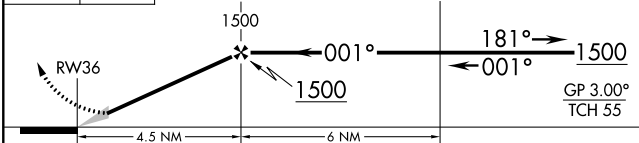
PBI ASOS 123.75	PALM BEACH APP CON 125.2 317.4	UNICOM 122.8 (CTAF) 0
---------------------------	------------------------------------------	---------------------------------



ELEV 16	D	TDZE 16
---------	----------	---------



2000 WIKIN VGSI and RNAV glidepath not coincident (VGSI Angle 3.00/TCH 44).



CATEGORY	A	B	C	D
LPV DA	471-1½ 455 (500-1½)			
LNAV/VNAV DA	429-1¾ 413 (500-1¾)			
LNAV MDA	520-1 504 (600-1)	520-1¾ 504 (600-1¾)		
C CIRCLING	580-1 564 (600-1)	760-2¼ 744 (800-2¼)	760-2½ 744 (800-2½)	

SE-3, 22 FEB 2024 to 21 MAR 2024

SE-3, 22 FEB 2024 to 21 MAR 2024