

WAAS CH <b>50219</b> <b>W15A</b>	APP CRS <b>155°</b>	Rwy Idg <b>4000</b> TDZE <b>1062</b> Apt Elev <b>1062</b>
--	------------------------	---

# RNAV (GPS) RWY 15

CAMDENTON MEML-LAKE RGNL (OZS)

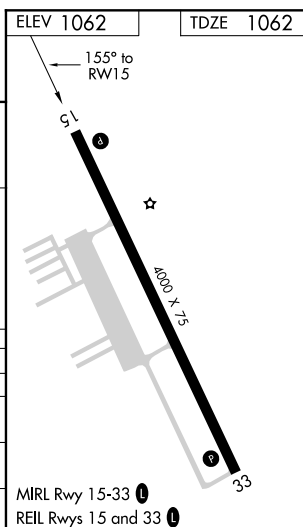
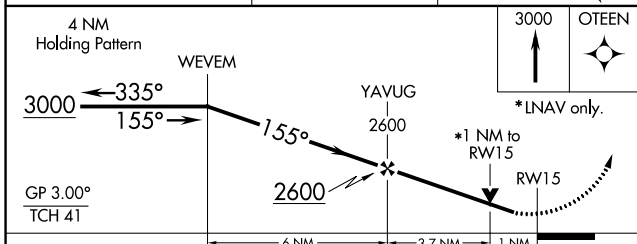
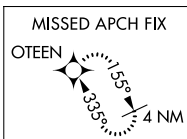
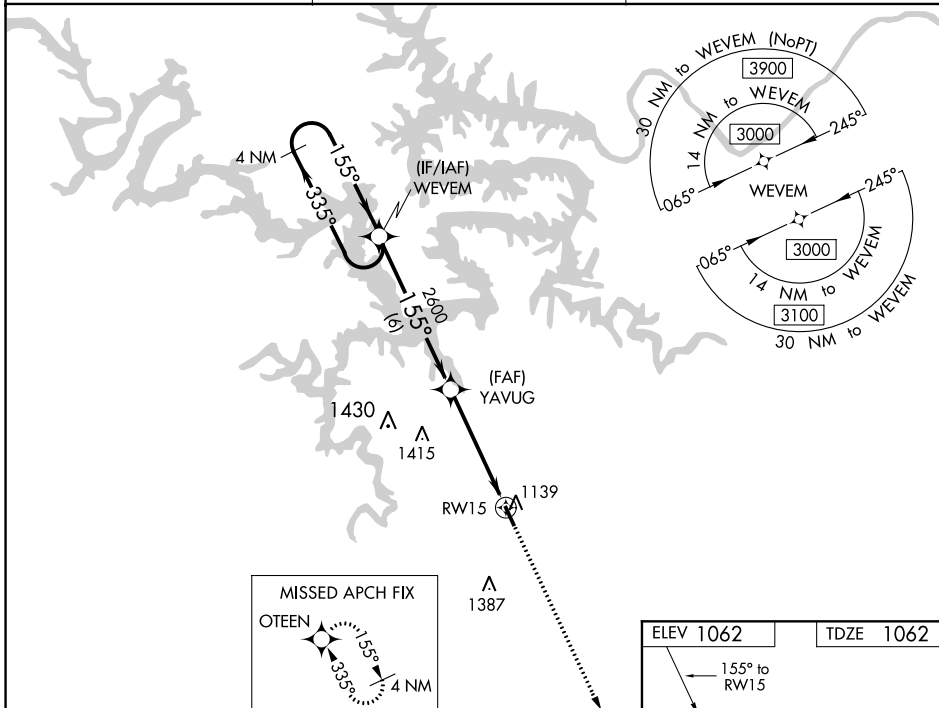
**⚠** For uncompensated Baro-VNAV systems, LNAV/VNAV NA below -17°C (2°F) or above 54°C (130°F). DME/DME RNP-0.3 NA. Helicopter visibility reduction below ¾ SM NA.  
**⚠** When local altimeter setting not received, use Lee C Fine Meml altimeter setting and increase all DA 50 feet, all MDA 60 feet, and increase LPV and LNAV/VNAV all Cats visibility ½ mile. Baro-VNAV and VDP NA when using Lee C Fine Meml altimeter setting.

MISSED APPROACH:  
Climb to 3000 direct OTEEN and hold.

AWOS-3  
**120.225**

MIZZU APP CON  
**124.1 353.925**

UNICOM  
**122.8 (CTAF) 0**



CATEGORY	A	B	C	D
LPV DA	1312-7/8	250 (300-7/8)		NA
LNAV/VNAV DA	1468-13/8	406 (500-13/8)		NA
LNAV MDA	1420-1	358 (400-1)		NA
CIRCLING	1540-1	478 (500-1)		NA

WAAS CH <b>97419</b> <b>W33A</b>	APP CRS <b>335°</b>	Rwy Idg TDZE Apt Elev	<b>4000</b> <b>1062</b> <b>1062</b>
--	------------------------	-----------------------------	---

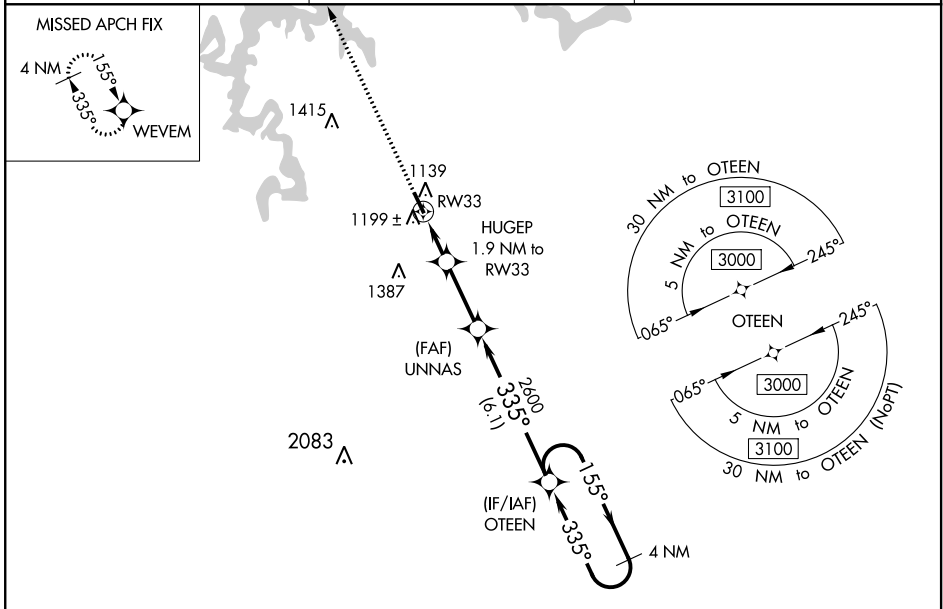
# RNAV (GPS) RWY 33

CAMDENTON MEML-LAKE RGNL (OZS)

**⚠** For uncompensated Baro-VNAV systems, LNAV/VNAV NA below -17°C (2°F) or above 54°C (130°F).  
 DME/DME RNP-0.3 NA. When local altimeter setting not received, use Lee C Fine Meml altimeter setting and increase all DA 50 feet, all MDA 60 feet, and increase LPV all Cats and LNAV/VNAV all Cats visibility 1/8 mile. Baro-VNAV and VDP NA when using Lee C Fine Meml altimeter setting.

MISSED APPROACH: Climb to 3000 direct WEVEM and hold.

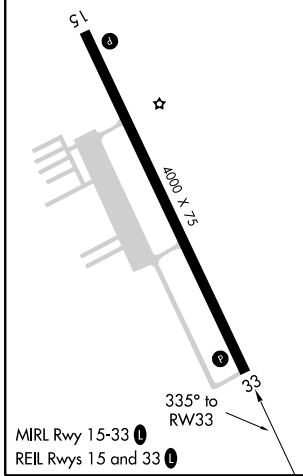
AWOS-3 <b>120.225</b>	MIZZU APP CON <b>124.1 353.925</b>	UNICOM <b>122.8 (CTAF) 0</b>
--------------------------	---------------------------------------	---------------------------------



NC-3, 02 DEC 2021 to 30 DEC 2021

NC-3, 02 DEC 2021 to 30 DEC 2021

ELEV 1062	TDZE 1062
-----------	-----------



3000	WEVEM	UNNAS	OTEEN	4 NM Holding Pattern		
* LNAV only	HUGEP 1.9 NM to RW33	UNNAS 2600	OTEEN 3000	155° → 3000		
	* 1.1 NM to RW33	UNNAS 2600	OTEEN 3000	← 335° 3000		
		UNNAS 2600	OTEEN 3000	GP 3.00° TCH 40		
	1.1	0.8	2.8 NM	6.1 NM		
CATEGORY	A		B		C	D
LPV DA	1312-7/8		250 (300-7/8)		NA	
LNAV/VNAV DA	1460-13/8		398 (400-13/8)		NA	
LNAV MDA	1460-1		398 (400-1)		NA	
<b>C</b> CIRCLING	1540-1		478 (500-1)		NA	

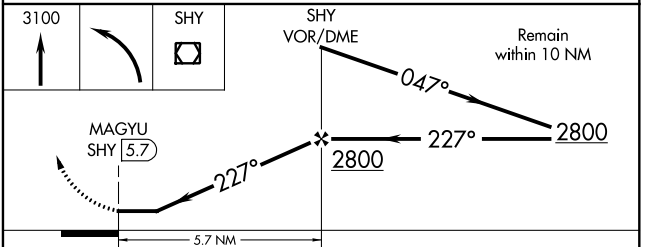
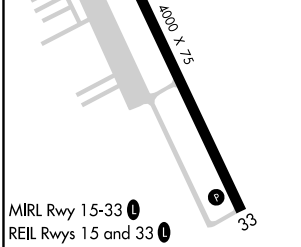
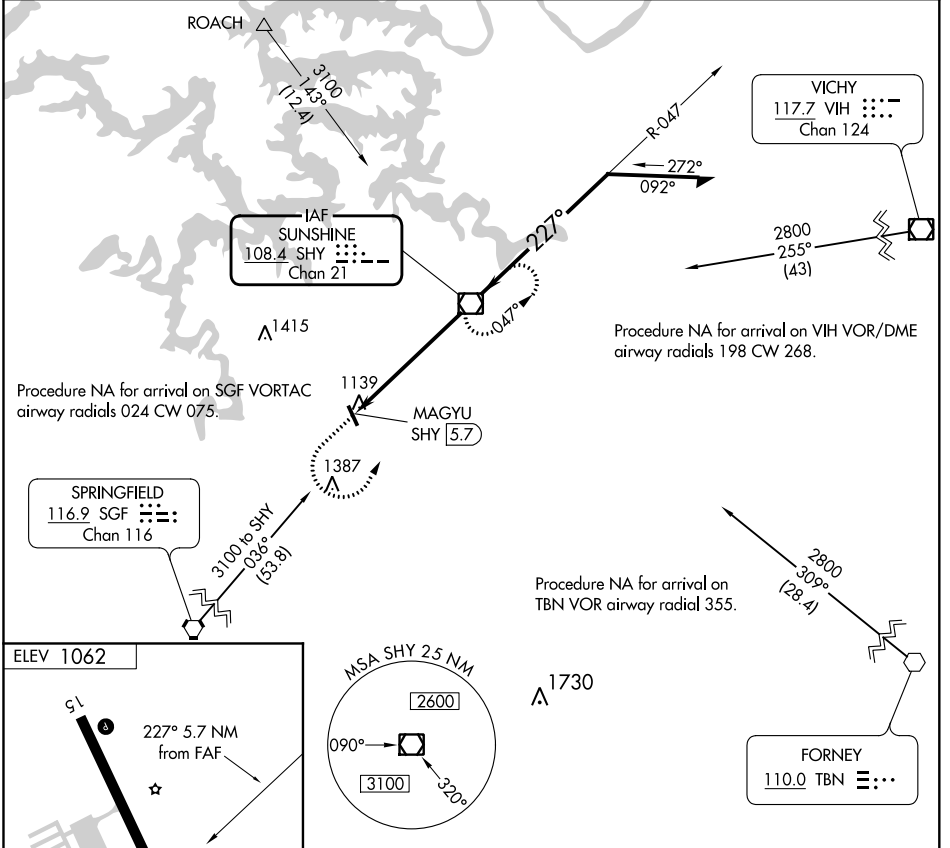
VOR/DME SHY <b>108.4</b> Chan 21	APP CRS <b>227°</b>	Rwy Idg TDZE Apt Elev <b>1062</b>	<b>N/A</b> <b>N/A</b>
--	------------------------	---	--------------------------

**VOR-A**

CAMDENTON MEML-LAKE RGNL (OZS)

**▽** MISSED APPROACH: Climb to 3100 then left turn direct SHY VOR/DME and hold.

AWOS-3 <b>120.225</b>	MIZZU APP CON <b>124.1 353.925</b>	UNICOM <b>122.8 (CTAF) ①</b>
--------------------------	---------------------------------------	---------------------------------



FAF to MAP 5.7 NM				
CATEGORY	A	B	C	D
<input checked="" type="checkbox"/> CIRCLING	1540-1	478 (500-1)	NA	
Knots	60	90	120	150
Min:Sec	5:42	3:48	2:51	2:17

NC-3, 02 DEC 2021 to 30 DEC 2021

NC-3, 02 DEC 2021 to 30 DEC 2021