

WAAS CH 40116 W15A	APP CRS 154°	Rwy Idg 4000 TDZE 928 Apt Elev 928
---------------------------------	------------------------	---

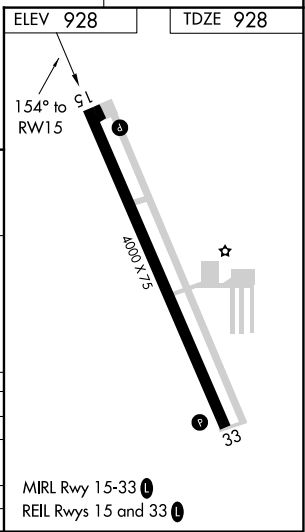
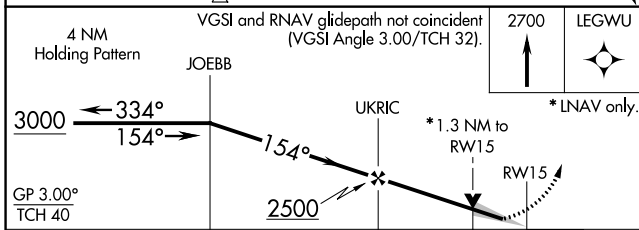
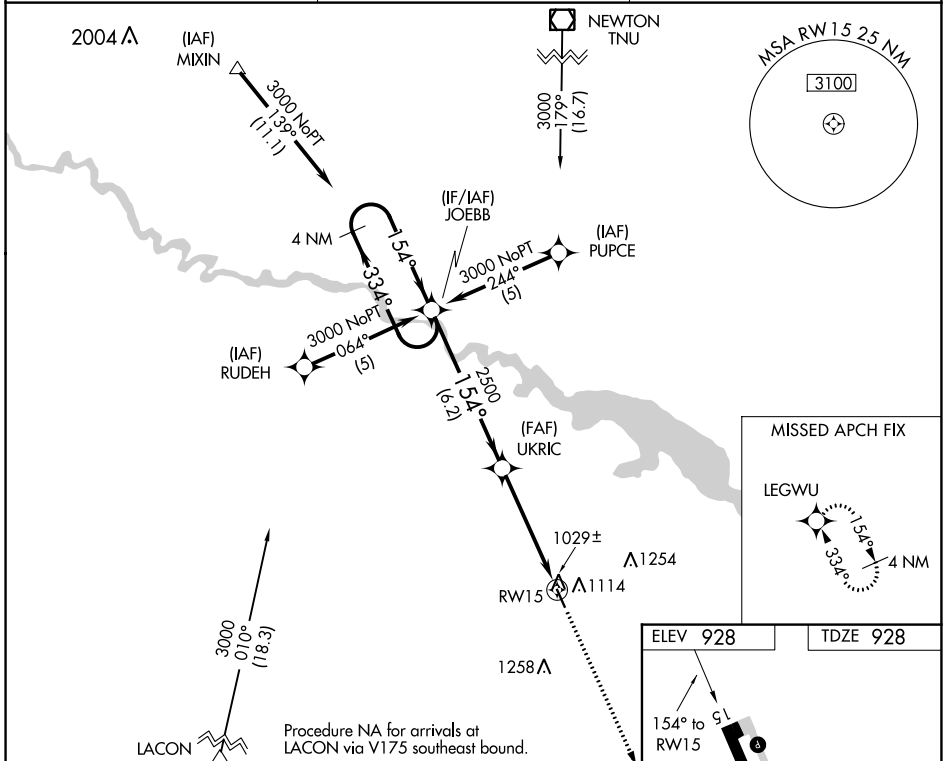
RNAV (GPS) RWY 15

KNOXVILLE MUNI (OXV)

⚠ DME/DME RNP-0.3 NA. For uncompensated Baro-VNAV systems, LNAV/VNAV NA below -16°C (4°F) or above 54°C (130°F). Baro-VNAV and VDP NA when using Pella altimeter setting. When local altimeter setting not received, use Pella altimeter setting and increase all DA 29 feet, all MDA 40 feet and LNAV/VNAV all Cats visibility ¼ mile.

⚠ MISSED APPROACH: Climb to 2700 direct LEGWU and hold.

AWOS-3 119.775	DES MOINES APP CON 123.9 307.15	UNICOM 122.8 (CTAF) ①
--------------------------	---	---------------------------------



CATEGORY	A	B	C	D
LPV DA	1242-1¼	314 (400-1¼)		NA
LNAV/VNAV DA	1299-1¼	371 (400-1¼)		NA
LNAV MDA	1360-1	432 (500-1)		NA
CIRCLING	1480-1	552 (600-1)		NA

NC-3, 22 FEB 2024 to 21 MAR 2024

NC-3, 22 FEB 2024 to 21 MAR 2024

MIRL Rwy 15-33 ①
REIL Rws 15 and 33 ①

APP CRS 334°	Rwy Idg 4000
	TDZE 928
	Apt Elev 928

RNAV (GPS) RWY 33

KNOXVILLE MUNI (O3V)

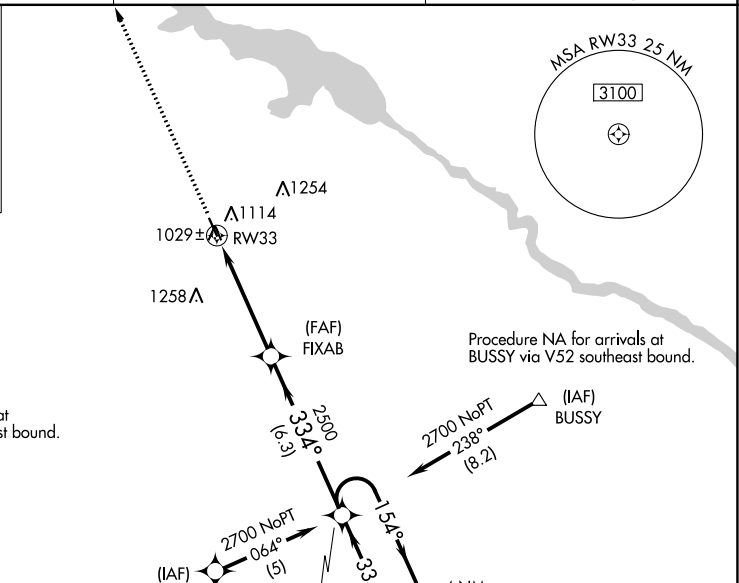
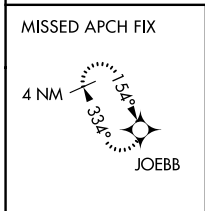
▼ DME/DME RNP-0.3 NA. Visibility reduction by helicopters NA.
▲ Baro-VNAV and VDP NA when using Pella altimeter setting.
 When local altimeter setting not received, use Pella altimeter setting and increase all DA 29 feet, all MDA 40 feet, LNAV/VNAV all Cats visibility 1/4 mile.
 For uncompensated Baro-VNAV systems, LNAV/VNAV NA below -16°C (4°F) or above 54°C (130°F).

MISSED APPROACH: Climb to 3000 direct JOEBB and hold.

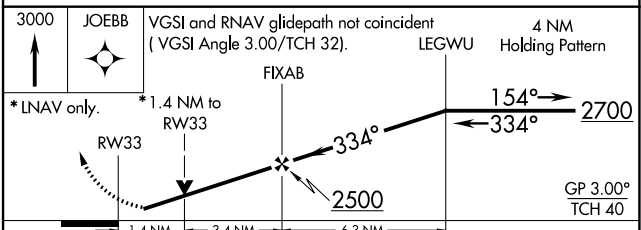
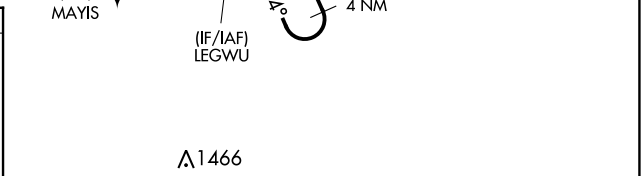
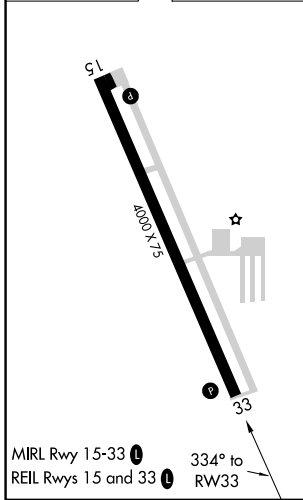
AWOS-3
119.775

DES MOINES APP CON
123.9 307.15

UNICOM
122.8 (CTAF)



ELEV 928	TDZE 928
----------	----------



CATEGORY	A	B	C	D
LNAV/VNAV DA	1299-1¼	371 (400-1¼)		NA
LNAV MDA	1400-1	472 (500-1)		NA
CIRCLING	1480-1	552 (600-1)		NA

NC-3, 22 FEB 2024 to 21 MAR 2024

NC-3, 22 FEB 2024 to 21 MAR 2024