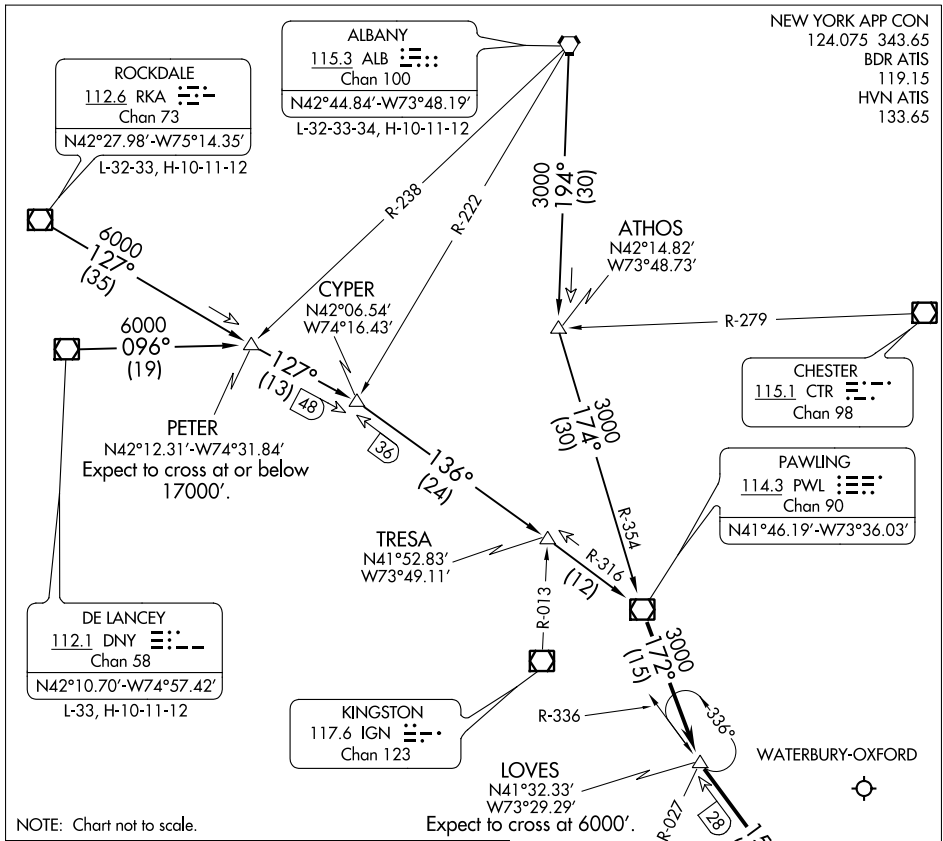


NEW YORK APP CON
 124.075 343.65
 BDR ATIS
 119.15
 HWN ATIS
 133.65



NE-1, 12 AUG 2021 to 09 SEP 2021

NE-1, 12 AUG 2021 to 09 SEP 2021

NOTE: Chart not to scale.

ARRIVAL DESCRIPTION

ALBANY TRANSITION (ALB.BDR1): From over ALB VORTAC via ALB R-194 to ATHOS INT, then via PWL R-354 to PWL VOR/DME. Thence

DELANCEY TRANSITION (DNY.BDR1): From over DNY VOR/DME via DNY R-096 to PETER INT, then via RKA R-127 to CYPER INT, then via PWL R-316 to PWL VOR/DME. Thence

ROCKDALE TRANSITION (RKA.BDR1): From over RKA VOR/DME via RKA R-127 to CYPER INT, then via PWL R-316 to PWL VOR/DME. Thence

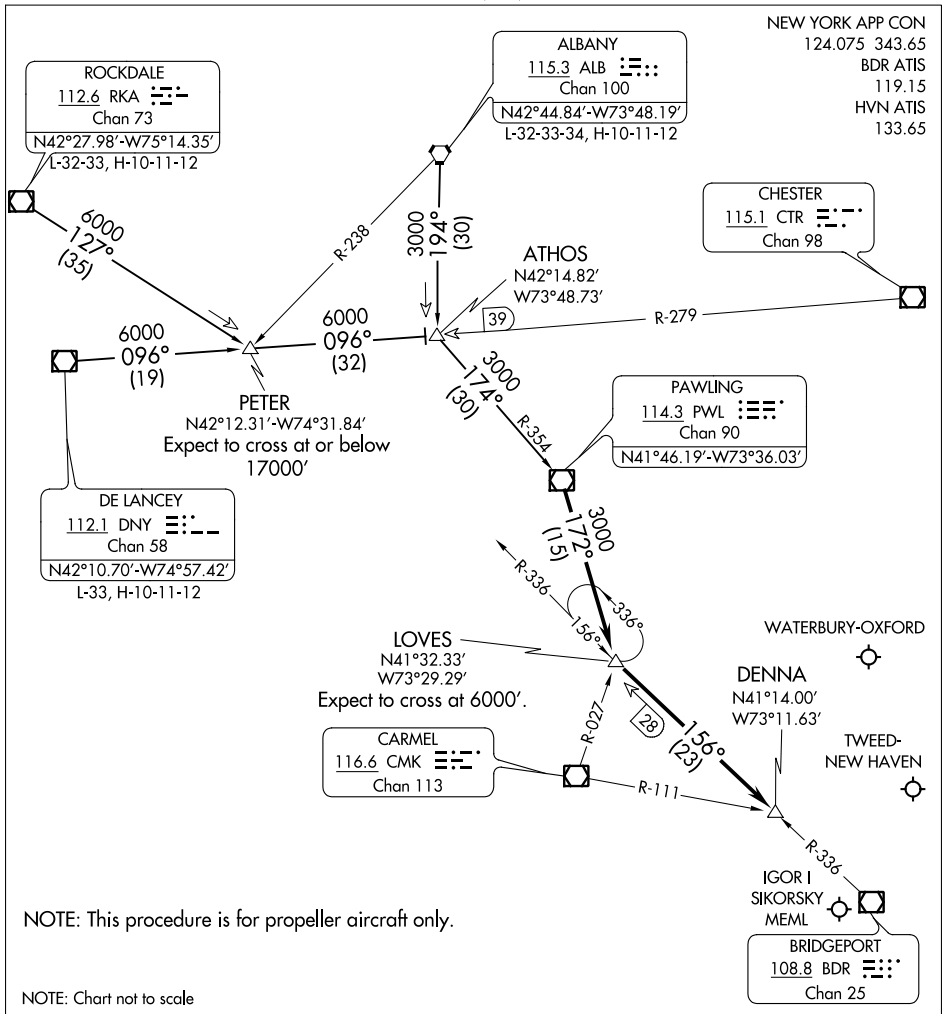
. . . . From over PWL VOR/DME via PWL R-172 to LOVES INT. Then via BDR R-336 to DENNA INT. Expect radar vectors to the final approach course.

NOTE: This procedure applicable to jet aircraft only.

DENNA TWO ARRIVAL

AL-621 (FAA)

BRIDGEPORT, CONNECTICUT



NEW YORK APP CON
124.075 343.65
BDR ATIS
119.15
HVN ATIS
133.65

NE-1, 12 AUG 2021 to 09 SEP 2021

NE-1, 12 AUG 2021 to 09 SEP 2021

NOTE: This procedure is for propeller aircraft only.

NOTE: Chart not to scale

ALBANY TRANSITION (ALB.DENNA2): From over ALB VORTAC via ALB R-194 to ATHOS INT, then via PWL R-354 to PWL VOR/DME. Thence....

DELANCEY TRANSITION (DNY.DENNA2): From over DNY VOR/DME via DNY R-096 to ATHOS INT, then via PWL R-354 to PWL VOR/DME. Thence....

ROCKDALE TRANSITION (RKA.DENNA2): From over RKA VOR/DME via RKA R-127 to PETER INT, then via DNY R-096 to ATHOS INT, then via PWL R-354 to PWL VOR/DME. Thence....

....From over PWL VOR/DME via PWL R-172 to LOVES INT. Then via BDR R-336 to DENNA INT. Expect radar vectors to final approach course.

DENNA TWO ARRIVAL

BRIDGEPORT, CONNECTICUT