

LOC I-LJU 108.5	APP CRS 245°	Rwy Idg 11800
		TDZE 624
		Apr Elev 633


ILS or LOC RWY 25

OSCODA/WURTSMITH (OSC)

DME required.

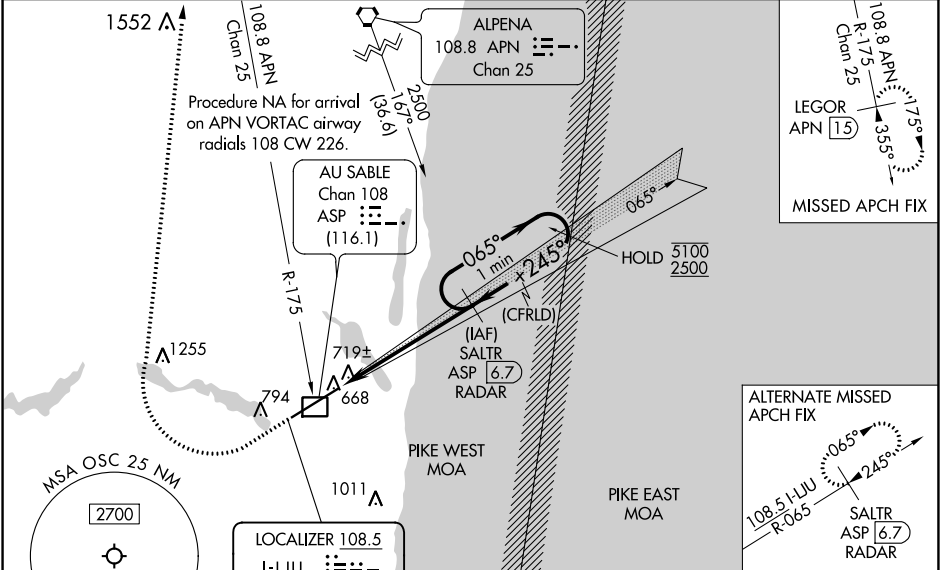
NA Circling NA southeast of Rwy 7-25. For inop ALS, increase S-LOC Cats C and D visibility to 1 SM. DME from ASP DME. Simultaneous reception of I-LJU and ASP DME required.

MALSR

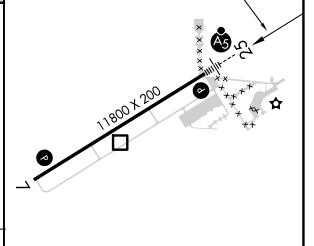
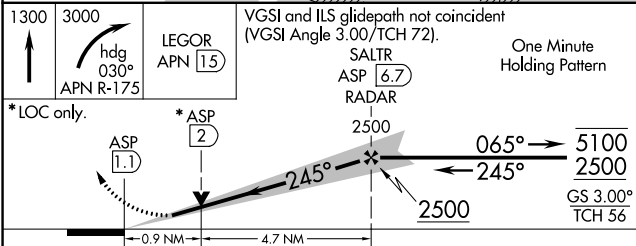


MISSED APPROACH: Climb to 1300 then climbing right turn to 3000 on heading 030° and an APN VORTAC R-175 to LEGOR/APN 15 DME and hold.

AWOS-3 118.7	MINNEAPOLIS CENTER 125.475 269.45	UNICOM 123.0 (CTAF)
------------------------	---	-------------------------------



ELEV 633	TDZE 624
----------	----------



CATEGORY	A	B	C	D
S-ILS 25	824-½ 200 (200-½)			
S-LOC 25	980-½ 356 (400-½)		980-⅝ 356 (400-⅝)	
C CIRCLING	1140-1 507 (600-1)		1300-2 667 (700-2)	

REIL Rwy 7

HIRL Rwy 7-25

EC-1, 22 FEB 2024 to 21 MAR 2024

EC-1, 22 FEB 2024 to 21 MAR 2024

WAAS CH 82317	APP CRS 245°	Rwy Idg 11800
W25A	TDZE 624	Apt Elev 633

RNAV (GPS) RWY 25

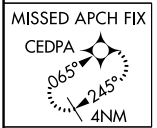
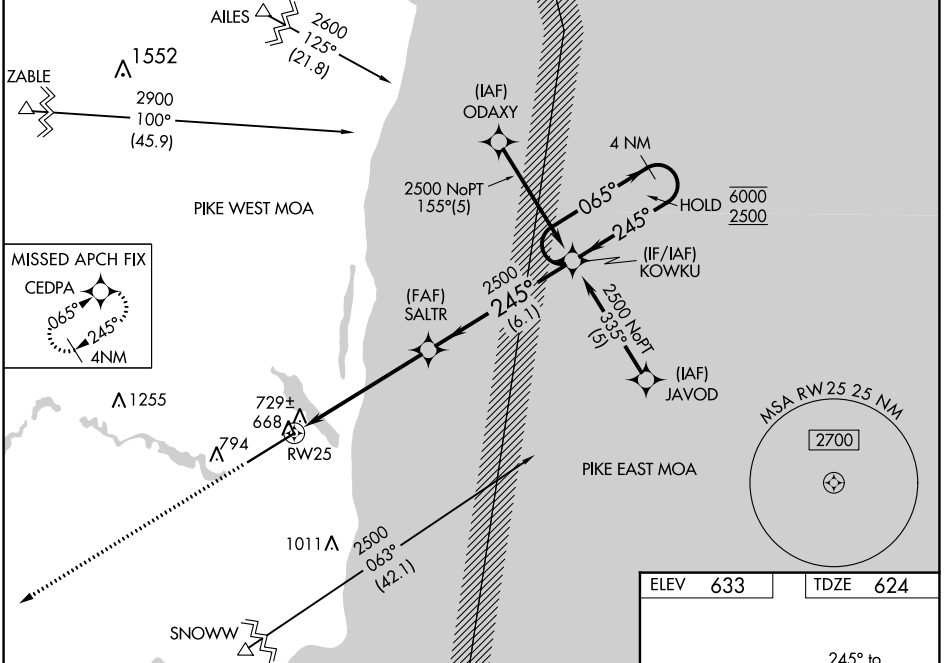
OSCODA/WURTSMITH (OSC)

RNP APCH.

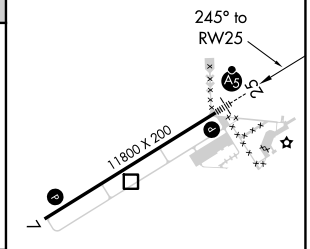
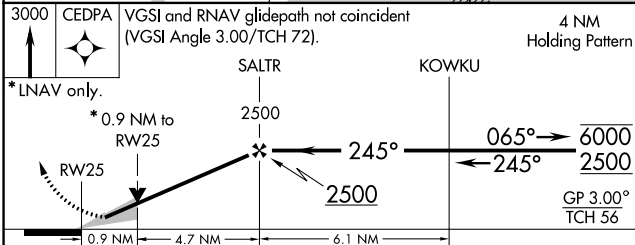
▼ Circling NA southeast of Rwy 7-25. Baro-VNAV and VDP NA when using Alpena altimeter setting. For uncompensated Baro-VNAV systems, LNAV/VNAV NA below -16°C or above 54°C. When local altimeter setting not received, use Alpena altimeter setting and increase all DA 96 feet and all MDA 100 feet. Increase LNAV/VNAV all Cats and LNAV and Circling Cat C visibility ¼ SM, and Circling Cat D visibility ½ SM. For inop ALS, increase LNAV Cats C and D visibility to 1 SM. For inop ALS when using Alpena altimeter setting, increase LPV all Cats visibility to ¾ SM.

MALSRS MISSED APPROACH:
Climb to 3000 direct CEDPA and hold.

AWOS-3 118.7	MINNEAPOLIS CENTER 125.475 269.45	UNICOM 123.0 (CTAF) 0
------------------------	---	---------------------------------



ELEV 633	TDZE 624
-----------------	-----------------



CATEGORY	A	B	C	D
LPV DA	824-½ 200 (200-½)			
LNNAV/VNAV DA	1004-¾ 380 (400-¾)			
LNNAV MDA	980-½ 356 (400-½)	980-⅝ 356 (400-⅝)	980-1 356 (400-1)	980-1 356 (400-1)
CIRCLING	1140-1 507 (600-1)	1160-1½ 527 (600-1½)	1300-2 667 (700-2)	1300-2 667 (700-2)

REIL Rwy 7 0
HIRL Rwy 7-25 0

EC-1, 22 FEB 2024 to 21 MAR 2024

EC-1, 22 FEB 2024 to 21 MAR 2024

WAAS CH 97417 W07A	APP CRS 065°	Rwy Idg 11800 TDZE 633 Apt Elev 633
--	------------------------	--

RNAV (GPS) RWY 7

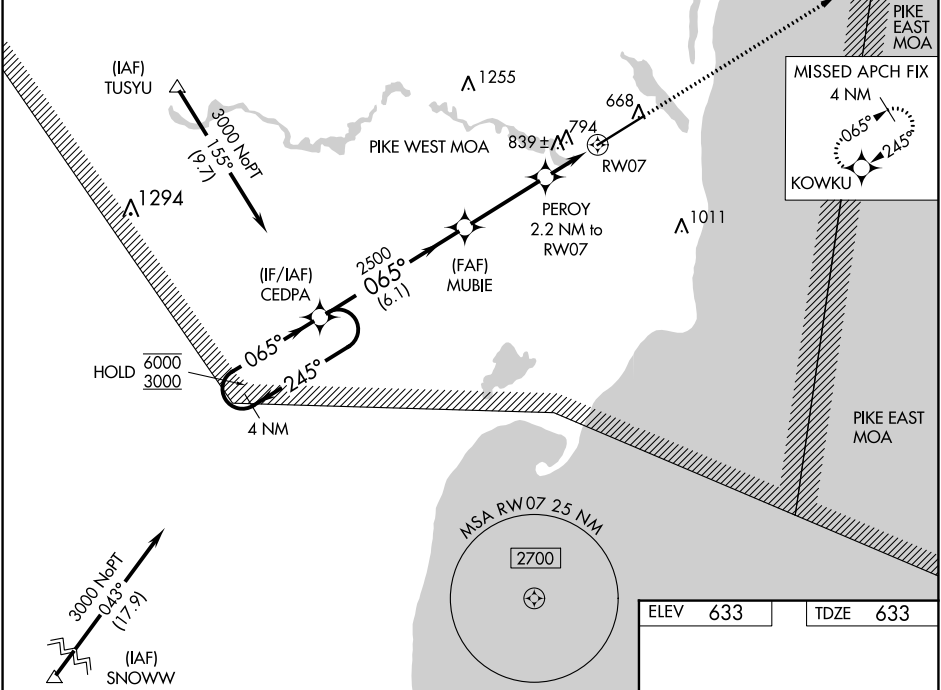
OSCODA/WURTSMITH (OSC)

RNP APCH:

▼ Circling NA southeast of Rwy 7-25. Baro-VNAV and VDP NA when using Alpena altimeter setting. Rwy 7 helicopter visibility reduction below $\frac{3}{4}$ SM NA. For uncompensated Baro-VNAV systems, LNAV/VNAV NA below -16°C or above 54°C. When local altimeter setting not received use Alpena altimeter setting and increase all DA 96 feet and all MDA 100 feet. Increase LPV all Cats and LNAV Cat C and D visibility $\frac{1}{4}$ SM, and Circling Cat C visibility $\frac{1}{4}$ SM and Cat D visibility $\frac{1}{2}$ SM.

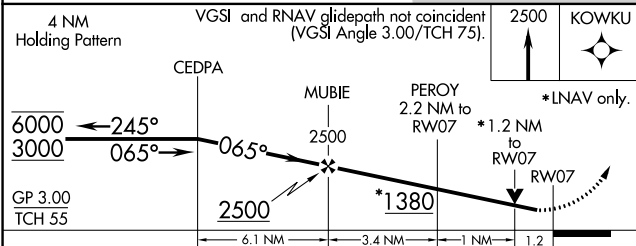
MISSED APPROACH:
Climb to 2500 direct KOWKU and hold.

AWOS-3 118.7	MINNEAPOLIS CENTER 125.475 269.45	UNICOM 123.0 (CTAF)
------------------------	---	-------------------------------



EC-1, 22 FEB 2024 to 21 MAR 2024

EC-1, 22 FEB 2024 to 21 MAR 2024



ELEV 633	TDZE 633
----------	----------

CATEGORY	A	B	C	D
LPV DA	892- $\frac{3}{4}$ 259 (300- $\frac{3}{4}$)			
LNAV/VNAV DA	1148-1 $\frac{3}{4}$ 515 (600-1 $\frac{3}{4}$)			
LNAV MDA	1080-1	447 (500-1)	1080-1 $\frac{3}{8}$ 447 (500-1 $\frac{3}{8}$)	1080-1 $\frac{1}{2}$ 447 (500-1 $\frac{1}{2}$)
CIRCLING	1140-1	507 (600-1)	1160-1 $\frac{1}{2}$ 527 (600-1 $\frac{1}{2}$)	1300-2 667 (700-2)

