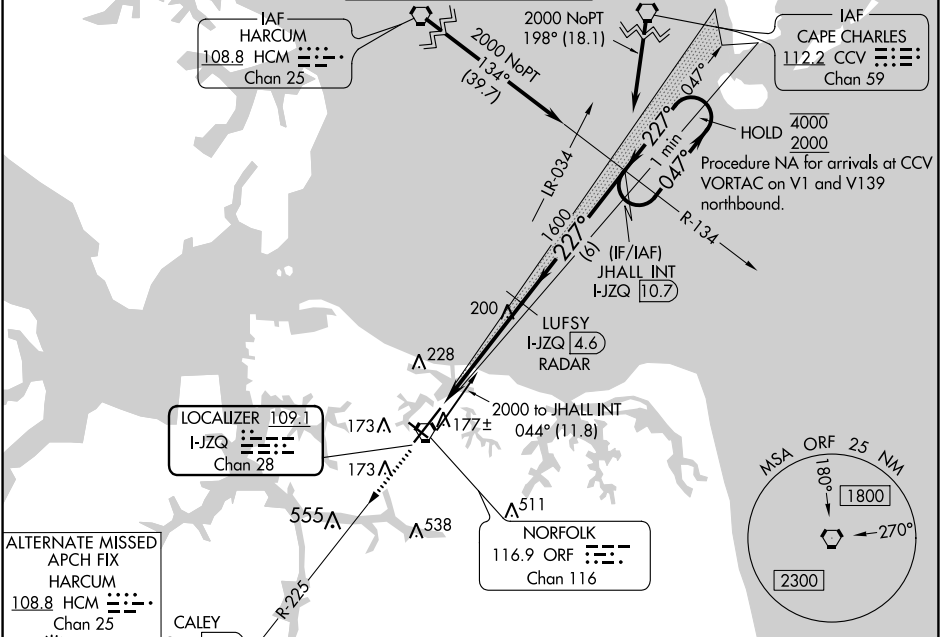


LOC/DME I-JZQ 109.1 Chan 28	APP CRS 227°	Rwy Idg TDZE Apt Elev 8995 26 27
--	------------------------	--

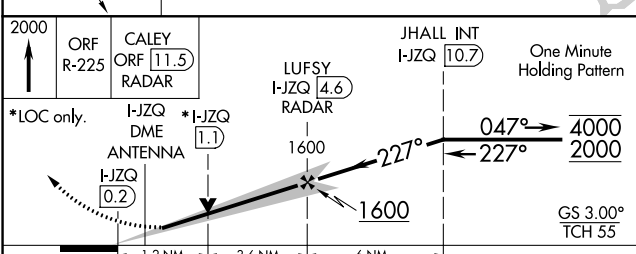
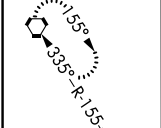
ILS or LOC RWY 23

NORFOLK INTL (ORF)

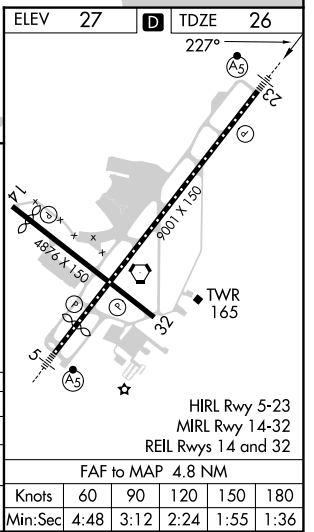
DME or RADAR required.		MALSR	MISSED APPROACH: Climb to 2000 on ORF VORTAC R-225 to CALEY/ORF 11.5 DME/RADAR and hold.	
ATIS 127.15	NORFOLK APP CON 118.9 353.7	NORFOLK TOWER 120.8 257.8	GND CON 121.9	CLNC DEL 118.5



ALTERNATE MISSED APCH FIX
APCH FIX
HARCUM
108.8 HCM
Chan 25



CATEGORY	A	B	C	D
S-ILS 23	226-1/2 200 (200-1/2)			
S-LOC 23	460-1/2	434 (500-1/2)	460-3/4	434 (500-3/4)
CIRCLING	480-1 453 (500-1)	540-1 513 (600-1)	540-1 1/2 513 (600-1 1/2)	900-2 3/4 873 (900-2 3/4)



NE-3, 22 FEB 2024 to 21 MAR 2024

NE-3, 22 FEB 2024 to 21 MAR 2024

Knots	60	90	120	150	180
Min:Sec	4:48	3:12	2:24	1:55	1:36


LOC/DME I-ORF 109.1 Chan 28	APP CRS 047°	Rwy ldg 7809 TDZE 26 Apt Elev 27
--	------------------------	---

ILS or LOC RWY 5

NORFOLK INTL (ORF)

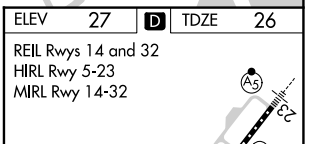
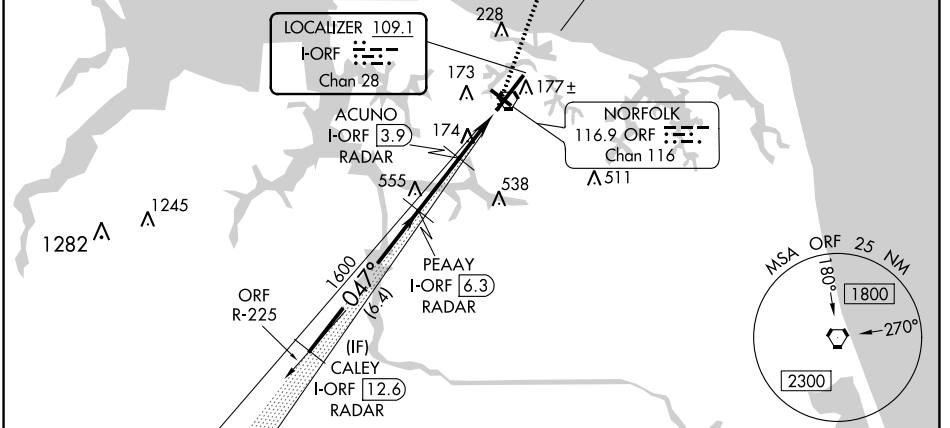
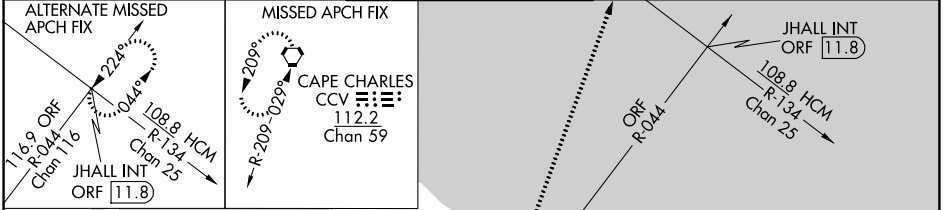
DME or RADAR required. RADAR required for procedure entry.

Autopilot coupled approach NA below 1180. For inop ALS, increase S-LOC 5 Cat C and D visibility to RVR 6000. ** RVR 1800 authorized with use of FD or AP or HUD to DA.

MALSRR 

MISSED APPROACH: Climb to 2000 direct CCV VORTAC and hold.

ATIS 127.15	NORFOLK APP CON 118.9 353.7	NORFOLK TOWER 120.8 257.8	GND CON 121.9	CLNC DEL 118.5
-----------------------	---------------------------------------	-------------------------------------	-------------------------	--------------------------



CATEGORY	A	B	C	D
S-ILS 5**	226/24 200 (200-½)			
S-LOC 5	440/24 414 (500-½)	440/40 414 (500-¾)		
CIRCLING	480-1 453 (500-1)	540-1 513 (600-1)	540-1½ 513 (600-1½)	900-2¾ 873 (900-2¾)

ELEV	27	TDZE	26
REIL Rwy 14 and 32			
HIRL Rwy 5-23			
MIRL Rwy 14-32			
FACILITY	FAF to MAP 4.8 NM		
Knots	60	90	120 150 180
Min:Sec	4:48	3:12	2:24 1:55 1:36

CATEGORY	A	B	C	D
S-ILS 5**	226/24 200 (200-½)			
S-LOC 5	440/24 414 (500-½)	440/40 414 (500-¾)		
CIRCLING	480-1 453 (500-1)	540-1 513 (600-1)	540-1½ 513 (600-1½)	900-2¾ 873 (900-2¾)

APP CRS 317°	Rwy Idg TDZE Apt Elev	3901 25 26
------------------------	-----------------------------	---------------------------------------

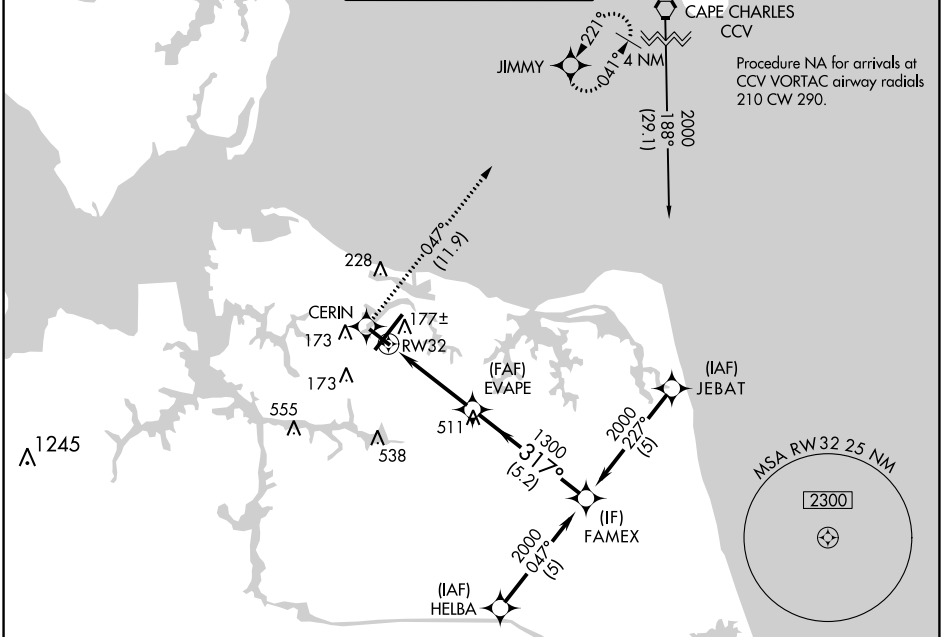
RNAV (GPS) RWY 32

NORFOLK INTL (ORF)

▽ DME/DME RNP-0.3 NA. Helicopter visibility reduction below ¾ SM NA.

▲ MISSED APPROACH: Climb to 2000 direct CERIN and on track 047° to JIMMY and hold.

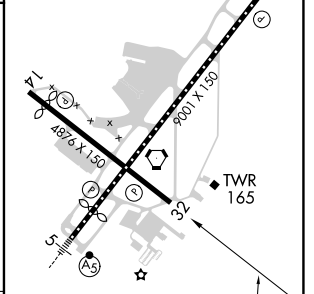
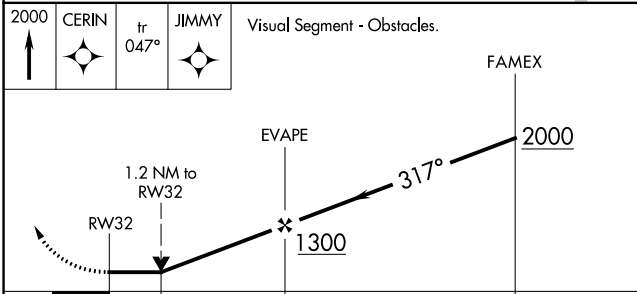
ATIS 127.15	NORFOLK APP CON 118.9 353.7	NORFOLK TOWER 120.8 257.8	GND CON 121.9	CLNC DEL 118.5
-----------------------	---------------------------------------	-------------------------------------	-------------------------	--------------------------



Procedure NA for arrivals at SUNNS on V139 southwest bound.

SUNNS ∇ 2000 056° (23-7)

ELEV 26	D TDZE 25
---------	------------------



CATEGORY	A	B	C	D
LNVA MDA	440-1	415 (500-1)	440-1½	415 (500-1½)
CIRCLING	480-1 454 (500-1)	540-1 514 (600-1)	540-1½ 514 (600-1½)	900-2¾ 874 (900-2¾)

REIL Rwy 14 and 32
HIRL Rwy 5-23
MIRL Rwy 14-32

NE-3, 22 FEB 2024 to 21 MAR 2024

NE-3, 22 FEB 2024 to 21 MAR 2024

RIVER VISUAL RWY 5

AL-291 (FAA)

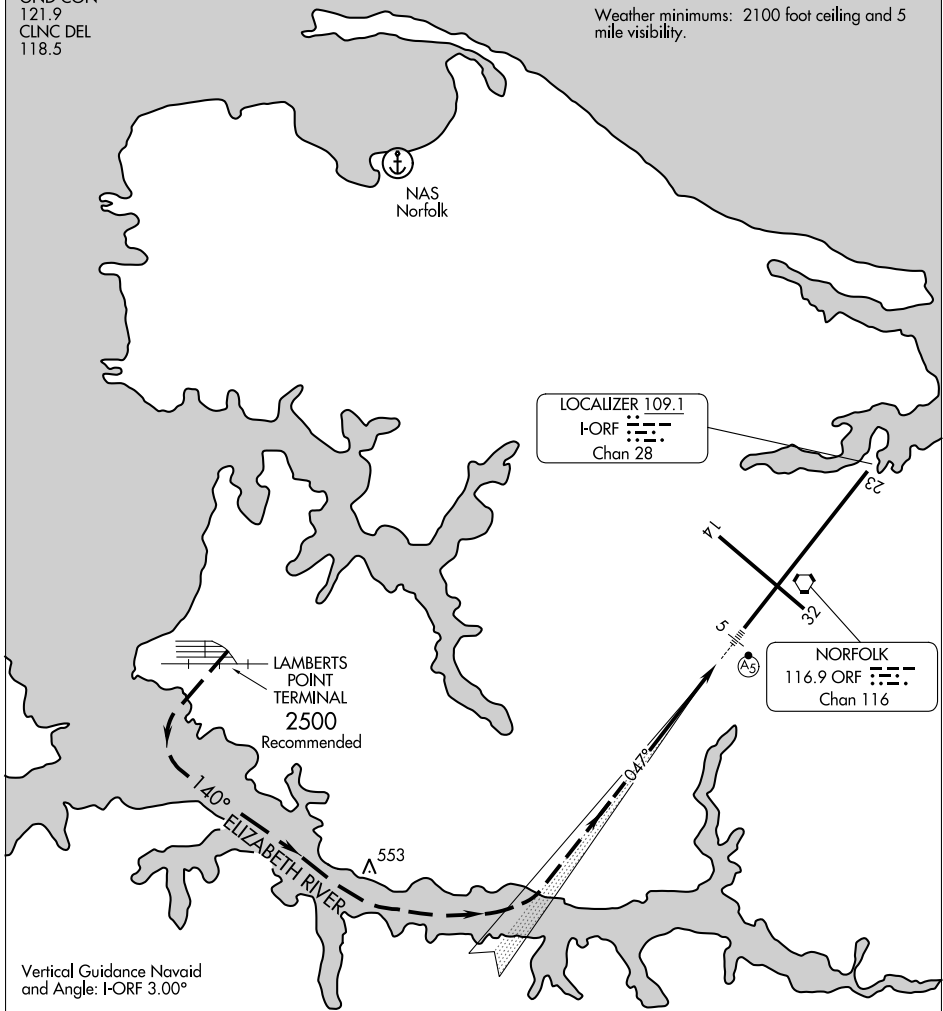
NORFOLK INTL (ORF)
NORFOLK, VIRGINIA

ATIS 127.15
NORFOLK APP CON
118.9 353.7
NORFOLK TOWER
120.8 257.8
GND CON
121.9
CLNC DEL
118.5

Procedure not authorized at night.

RADAR REQUIRED

Weather minimums: 2100 foot ceiling and 5 mile visibility.



NE-3, 22 FEB 2024 to 21 MAR 2024

NE-3, 22 FEB 2024 to 21 MAR 2024

1 NM	2	3	4	5	6
------	---	---	---	---	---

RIVER VISUAL RWY 5

RADAR vectors will be provided to the Lambert's Point Terminal. Proceed visually along the Elizabeth River to the extended centerline of Rwy 5. The I-ORF and MALSRS are available for supplemental guidance.

RIVER VISUAL RWY 5

APP CRS	Rwy Idg	8995
227°	TDZE	26
	Apt Elev	27

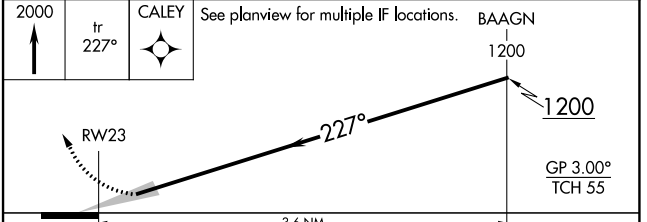
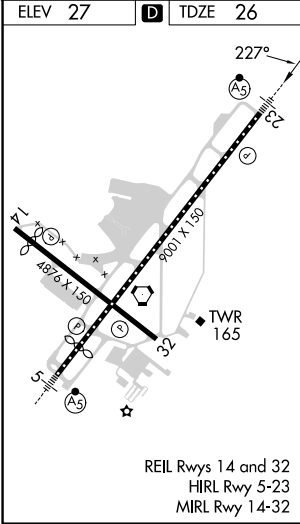
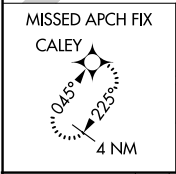
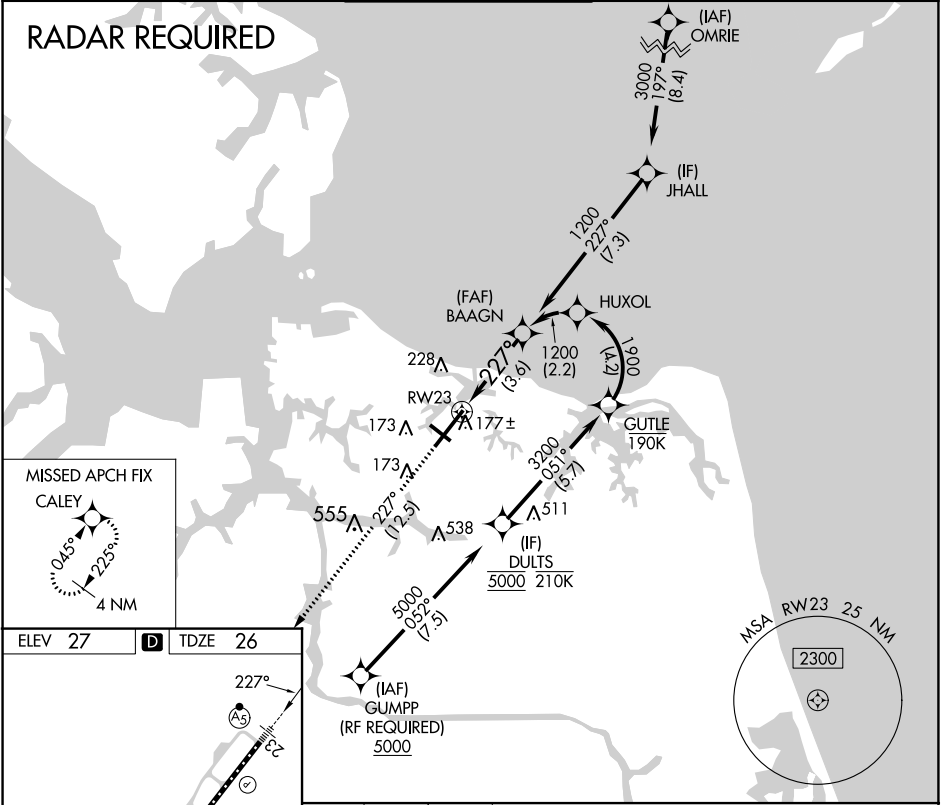
RNAV (RNP) Y RWY 23

NORFOLK INTL (ORF)

▼ For uncompensated Baro-VNAV systems, procedure NA below -9°C (16°F) or above 54°C (130°F). GPS required. For inop ALS, increase RNP 0.10 DA visibility all Cats to 1½ SM, increase RNP 0.30 DA visibility all Cats to 1¾ SM.

MALSR
 MISSED APPROACH: Climb to 2000 on track 227° to CALEY and hold.

ATIS 127.15	NORFOLK APP CON 118.9 353.7	NORFOLK TOWER 120.8 257.8	GND CON 121.9	CLNC DEL 118.5
-----------------------	---------------------------------------	-------------------------------------	-------------------------	--------------------------



CATEGORY	A	B	C	D
RNP 0.10 DA		432-¾	406 (500-¾)	
RNP 0.30 DA		491-1	465 (500-1)	

AUTHORIZATION REQUIRED

NE-3, 22 FEB 2024 to 21 MAR 2024

NE-3, 22 FEB 2024 to 21 MAR 2024

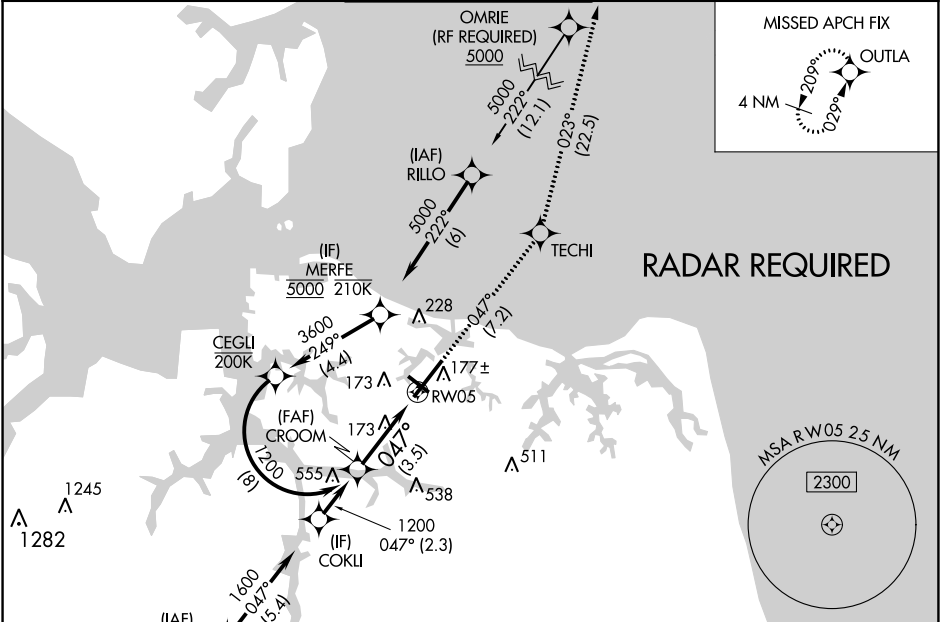
APP CRS	Rwy Idg	7809
047°	TDZE	26
	Apt Elev	27

RNAV (RNP) Y RWY 5

NORFOLK INTL (O.R.F)

<p>For uncompensated Baro-VNAV systems, LNAV/VNAV NA below -9°C (16°F) or above 54°C (130°F). GPS required.</p>	<p>MALSR</p>	<p>MISSED APPROACH: Climb to 2000 on track 047° to TECHI and on track 023° to OUTLA and hold.</p>

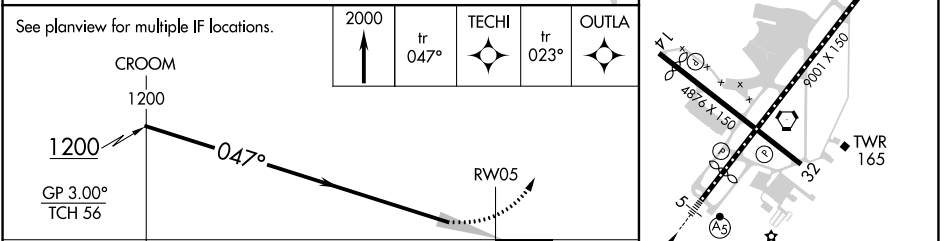
ATIS 127.15	NORFOLK APP CON 118.9 353.7	NORFOLK TOWER 120.8 257.8	GND CON 121.9	CLNC DEL 118.5
-----------------------	---------------------------------------	-------------------------------------	-------------------------	--------------------------



NE-3, 22 FEB 2024 to 21 MAR 2024

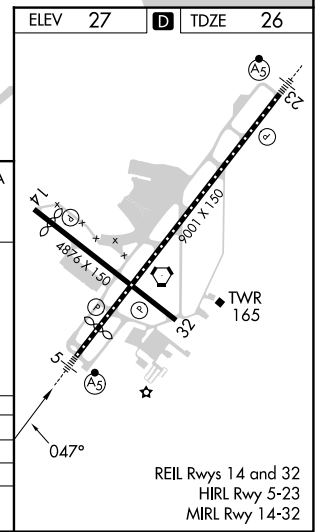
NE-3, 22 FEB 2024 to 21 MAR 2024

ELEV	27	D	TDZE	26
------	----	----------	------	----



CATEGORY	A	B	C	D
RNP 0.10 DA		350/26	324 (400-½)	
RNP 0.30 DA		454/40	428 (500-¾)	

AUTHORIZATION REQUIRED



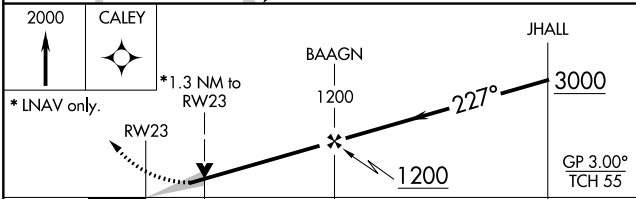
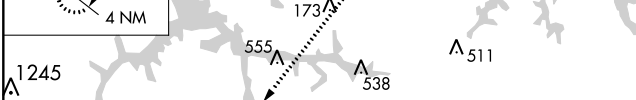
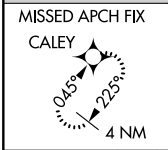
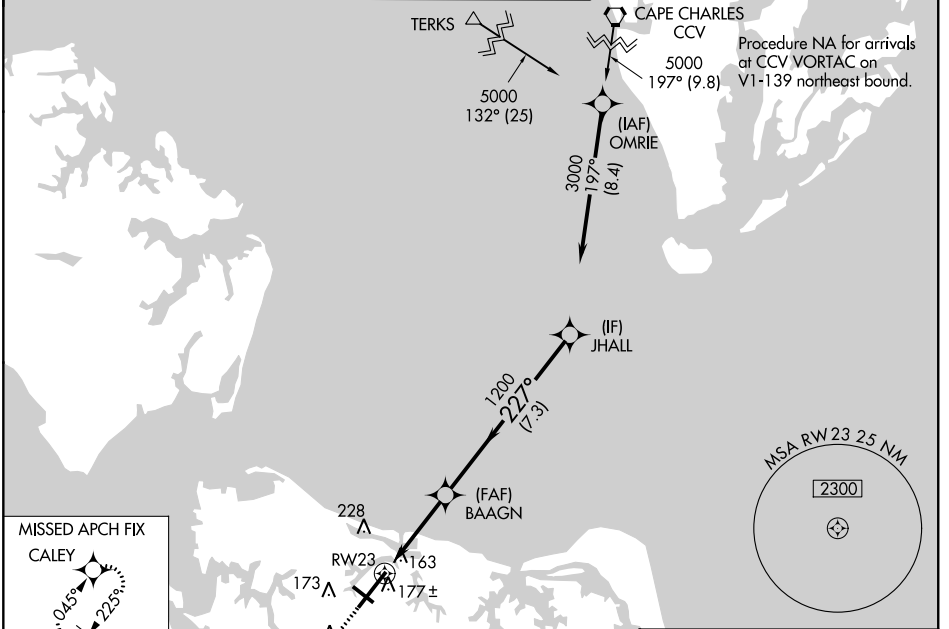
WAAS CH 56322 W23A	APP CRS 227°	Rwy Idg TDZE Apt Elev	8995 26 27
--	------------------------	-----------------------------	---------------------------------------

RNAV (GPS) Z RWY 23

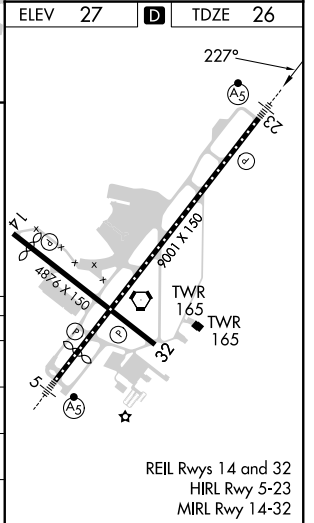
NORFOLK INTL (ORF)

<p>For uncompensated Baro-VNAV systems, LNAV/VNAV NA below -9°C (16°F) or above 54°C (130°F). DME/DME RNP-0.3 NA.</p>	MALSR 	MISSED APPROACH: Climb to 2000 direct CALEY and hold.

ATIS 127.15	NORFOLK APP CON 118.9 353.7	NORFOLK TOWER 120.8 257.8	GND CON 121.9	CLNC DEL 118.5
-----------------------	---------------------------------------	-------------------------------------	-------------------------	--------------------------



CATEGORY	A	B	C	D
LPV DA		226-½	200 (200-½)	
LNAV/VNAV DA		403-¾	377 (400-¾)	
LNAV MDA	480-½	454 (500-½)	480-⅞	454 (500-⅞)
CIRCLING	480-1 453 (500-1)	540-1 513 (600-1)	540-1½ 513 (600-1½)	900-2¾ 873 (900-2¾)



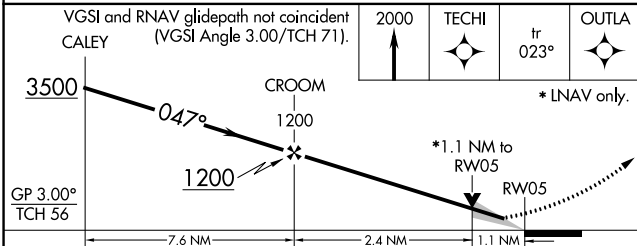
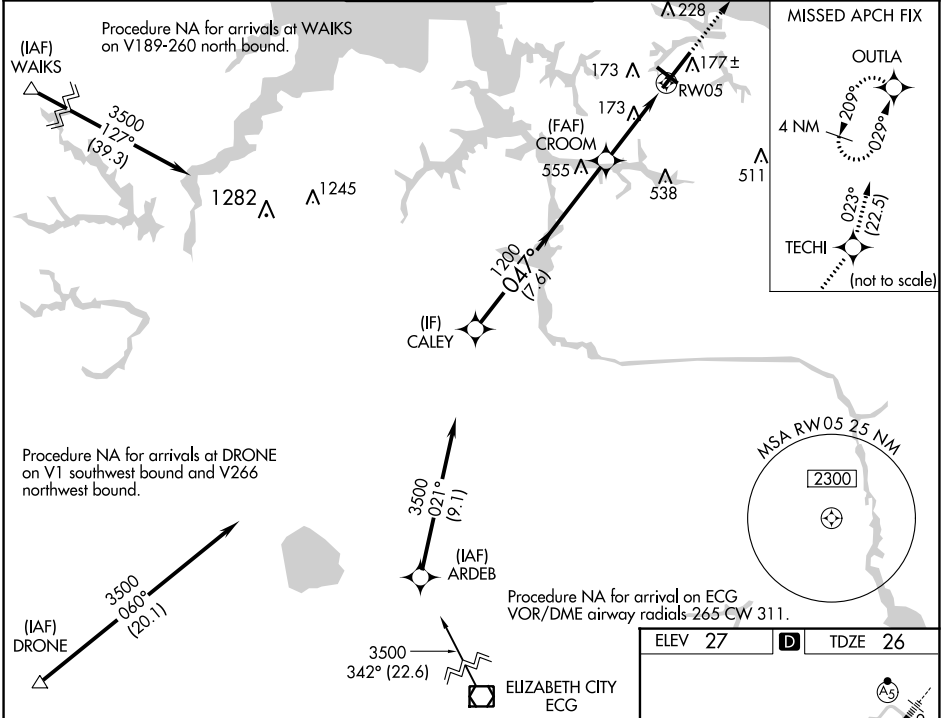
WAAS CH 50222 W05A	APP CRS 047°	Rwy Idg TDZE Apt Elev	7809 26 27
--	------------------------	-----------------------------	---------------------------------------

RNAV (GPS) Z RWY 5

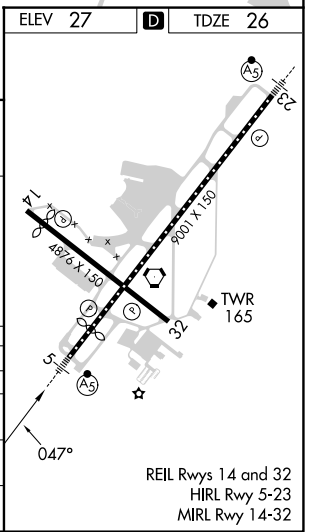
NORFOLK INTL (O.R.F.)

RNP APCH.	MALSRL	MISSED APPROACH: Climb to 2000 direct TECHI then on track 023° to OUTLA and hold.
<p>▼ For uncompensated Baro-VNAV systems, LNAV/VNAV NA below -9°C or above 54°C.</p> <p>▲ For inop ALS, increase LNAV/VNAV all Cats visibility to RVR 4500 and LNAV Cats C and D visibility to RVR 6000. **RVR 1800 authorized with use of FD or AP or HUD to DA.</p>		

ATIS 127.15	NORFOLK APP CON 118.9 353.7	NORFOLK TOWER 120.8 257.8	GND CON 121.9	CLNC DEL 118.5
-----------------------	---------------------------------------	-------------------------------------	-------------------------	--------------------------



CATEGORY	A	B	C	D
LPV DA**		226/24	200 (200-½)	
LNAV/VNAV DA		306/24	280 (300-½)	
LNAV MDA	440/24	414 (500-½)	440/40	414 (500-¾)
CIRCLING	480-1 453 (500-1)	540-1 513 (600-1)	540-1½ 513 (600-1½)	900-2¾ 873 (900-2¾)



NE-3, 22 FEB 2024 to 21 MAR 2024

NE-3, 22 FEB 2024 to 21 MAR 2024

VORTAC ORF 116.9 Chan 116	APP CRS 326°	Rwy Idg TDZE 25 Apt Elev 26	3901
--	------------------------	---	-------------

VOR/DME RWY 32

NORFOLK INTL (ORF)

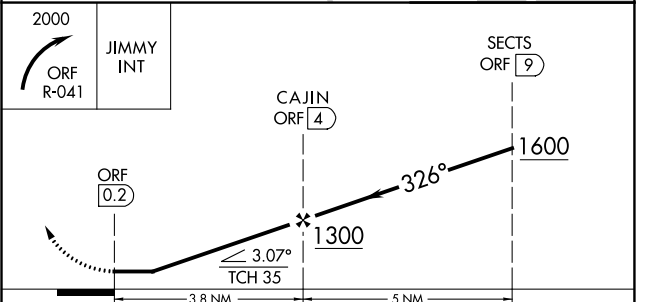
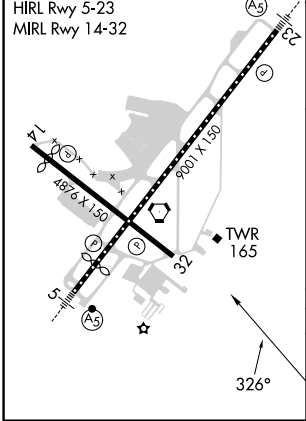
<p>Visibility reduction by helicopters NA.</p>	<p>MISSED APPROACH: Climbing right turn to 2000 via ORF R-041 to JIMMY Int/11.8 DME and hold.</p>			
--	---	--	--	--

ATIS 127.15	NORFOLK APP CON 118.9 353.7	NORFOLK TOWER 120.8 257.8	GND CON 121.9	CLNC DEL 118.5
-----------------------	---------------------------------------	-------------------------------------	-------------------------	--------------------------



RADAR REQUIRED

ELEV 26	D	TDZE 25
---------	----------	---------



CATEGORY	A	B	C	D
S-32	460-1	435 (500-1)	460-1¼ 435 (500-1¼)	460-1½ 435 (500-1½)
C CIRCLING	480-1 454 (500-1)	540-1 514 (600-1)	540-1½ 514 (600-1½)	900-2¾ 874 (900-2¾)

NE-3, 22 FEB 2024 to 21 MAR 2024

NE-3, 22 FEB 2024 to 21 MAR 2024