

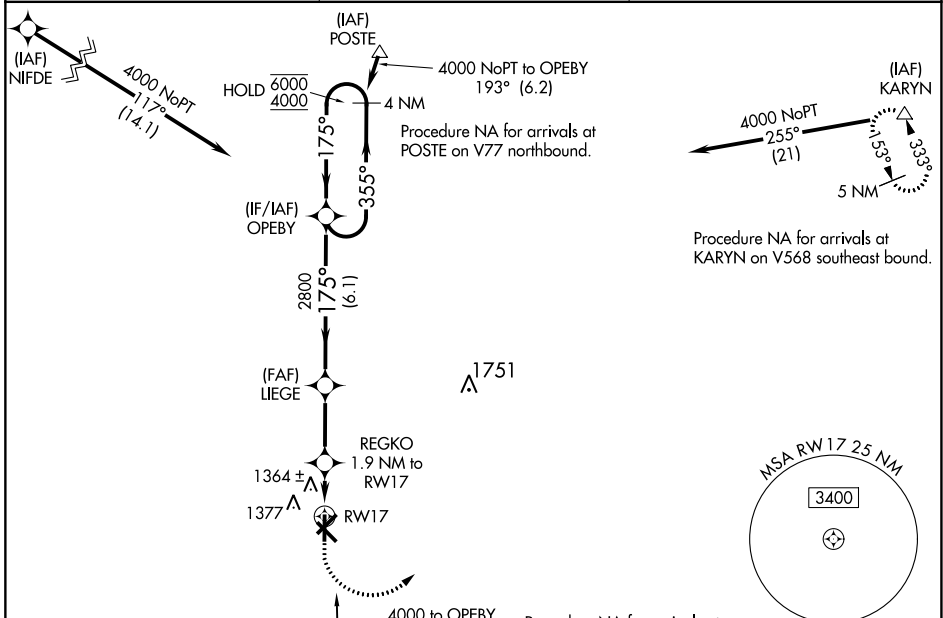
WAAS CH 97332 W17A	APP CRS 175°	Rwy Idg TDZE Apt Elev	5101 1275 1275
--	------------------------	-----------------------------	---

RNAV (GPS) RWY 17

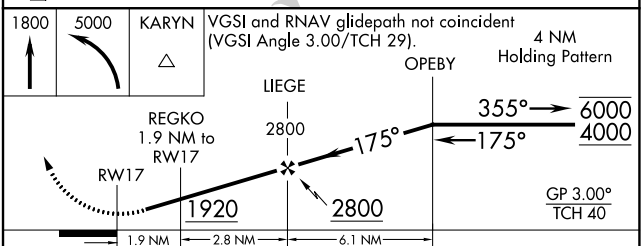
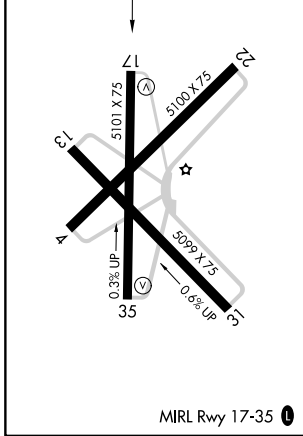
OLNEY MUNI (ONY)

RNP APCH - GPS.	MISSED APPROACH: Climb to 1800 then climbing left turn to 5000 direct KARYN and hold.
<p>▼ NA</p> <p>Rwy 17 helicopter visibility reduction below 3/4 SM NA. Baro-VNAV NA. Use Graham altimeter setting.</p>	

RPH AWOS-3P 118.025	FORT WORTH CENTER 133.5 350.35	UNICOM 122.8 (CTAF)
-------------------------------	--	-------------------------------



ELEV 1275	TDZE 1275
-----------	-----------



CATEGORY	A	B	C	D
LPV DA	1592-7/8	317 (400-7/8)		NA
LNAV/ VNAV DA	1592-7/8	317 (400-7/8)		NA
LNAV MDA	1700-1	425 (500-1)	1700-1 1/4 425 (500-1 1/4)	NA
<input checked="" type="checkbox"/> CIRCLING	1760-1	485 (500-1)	1760-1 1/2 485 (500-1 1/2)	NA

SC-2, 22 FEB 2024 to 21 MAR 2024

SC-2, 22 FEB 2024 to 21 MAR 2024

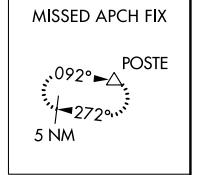
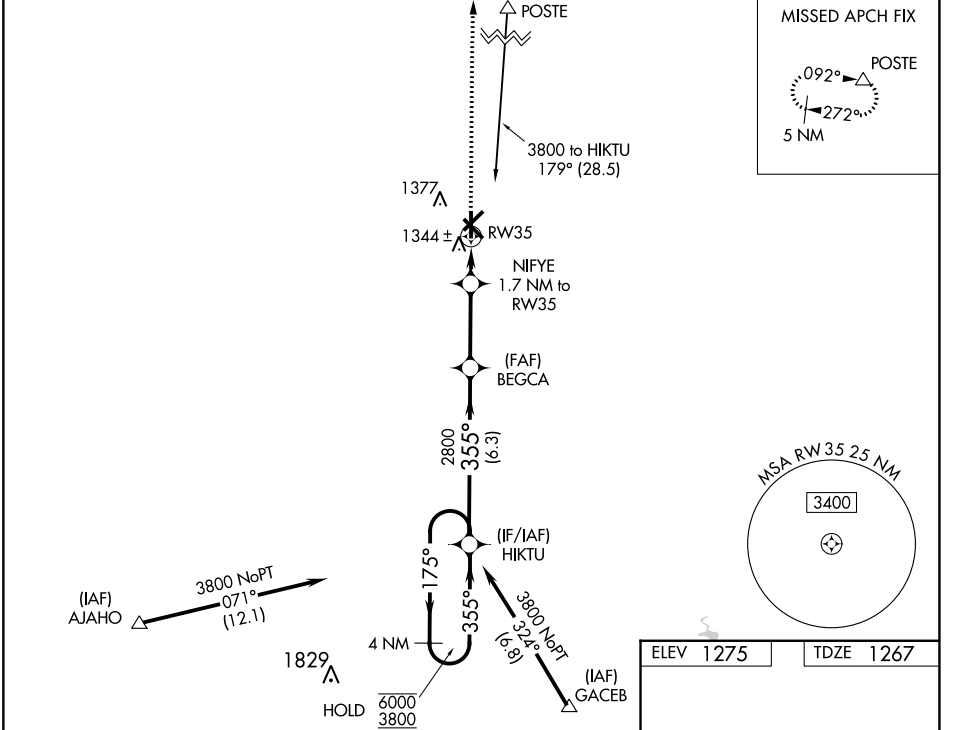
WAAS CH 53331 W35A	APP CRS 355°	Rwy Idg TDZE 1267 Apt Elev 1275	5101
--	------------------------	---	-------------

RNAV (GPS) RWY 35

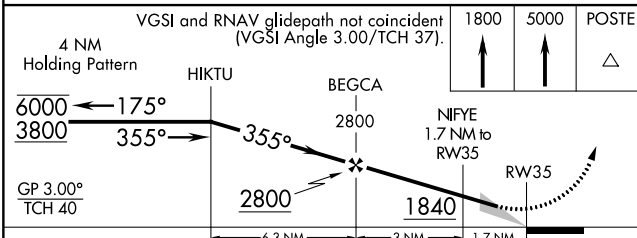
OLNEY MUNI (ONY)

RNP APCH - GPS.	MISSED APPROACH: Climb to 1800 then climb to 5000 direct POSTE and hold.
Baro-VNAV NA. Use Graham altimeter setting.	

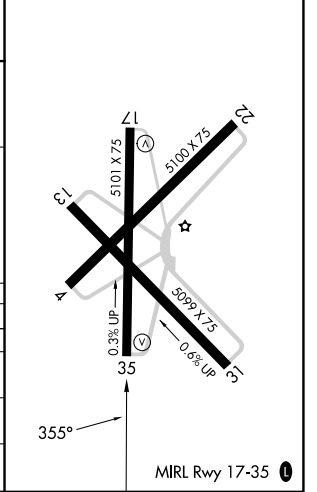
RPH AWOS-3P 118.025	FORT WORTH CENTER 133.5 350.35	UNICOM 122.8 (CTAF) 0
-------------------------------	--	---------------------------------



ELEV 1275	TDZE 1267
-----------	-----------



VGSI and RNAV glidepath not coincident (VGSI Angle 3.00/TCH 37).				
4 NM Holding Pattern		HIKTU	BEGCA	POSTE
GP 3.00°	TCH 40	6000	3800	2800
		175°	355°	355°
		6.3 NM	3 NM	1.7 NM
CATEGORY	A	B	C	D
LPV DA	1534-7/8	267 (300-7/8)		NA
LNAV/VNAV DA	1584-7/8	317 (400-7/8)		NA
LNAV MDA	1680-1	413 (500-1)	1680-1 1/8 413 (500-1 1/8)	NA
CIRCLING	1760-1	485 (500-1)	1760-1 1/2 485 (500-1 1/2)	NA



SC-2, 22 FEB 2024 to 21 MAR 2024

SC-2, 22 FEB 2024 to 21 MAR 2024