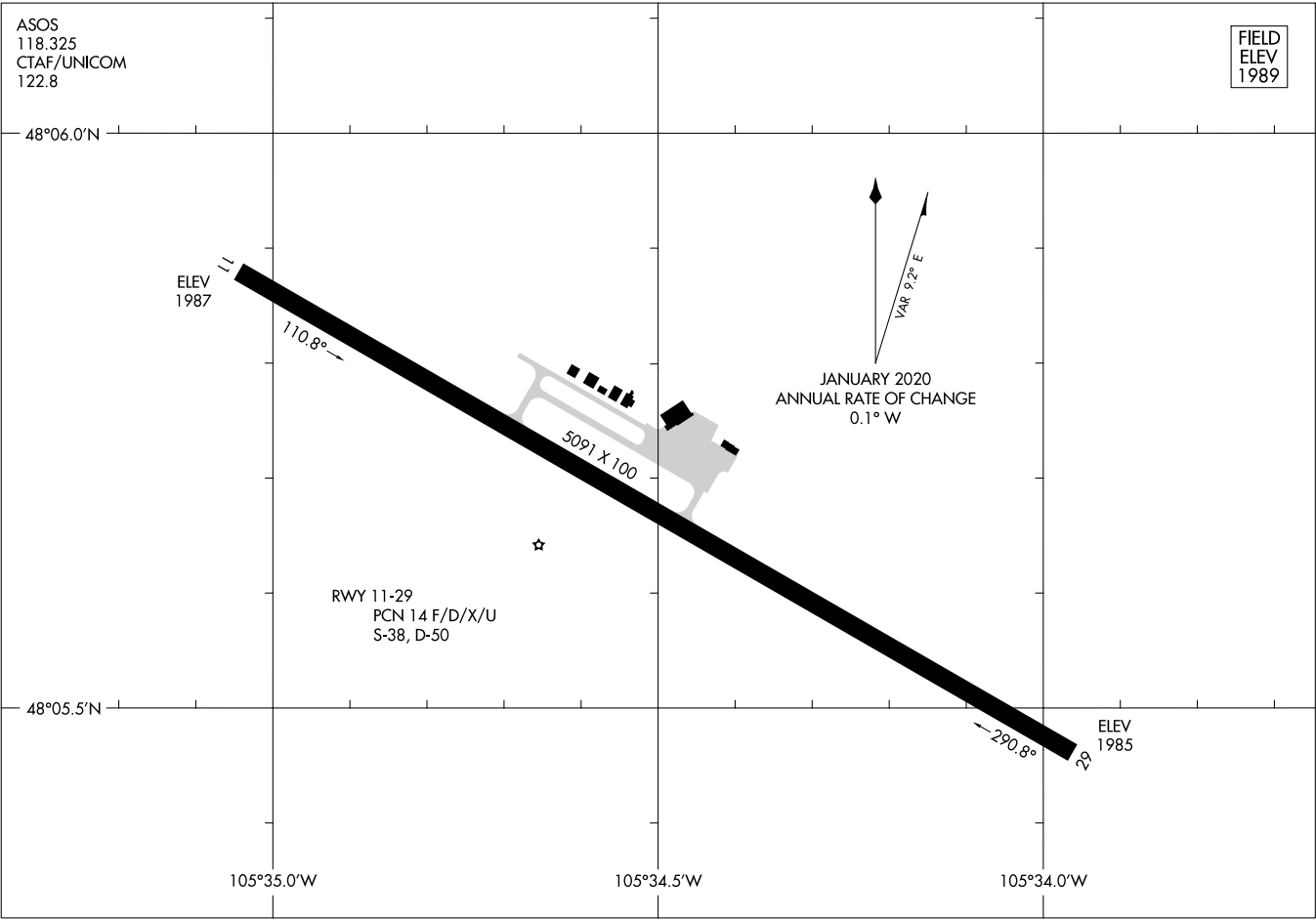


FIELD  
ELEV  
1989

ASOS  
118.325  
CTAF/UNICOM  
122.8



NW-1, 22 FEB 2024 to 21 MAR 2024

NW-1, 22 FEB 2024 to 21 MAR 2024

WAAS CH <b>77929</b> <b>W11A</b>	APP CRS <b>111°</b>	Rwy Idg TDZE Apt Elev	<b>5091</b> <b>1988</b> <b>1989</b>
--	------------------------	-----------------------------	---

# RNAV (GPS) RWY 11

L M CLAYTON (OLF)

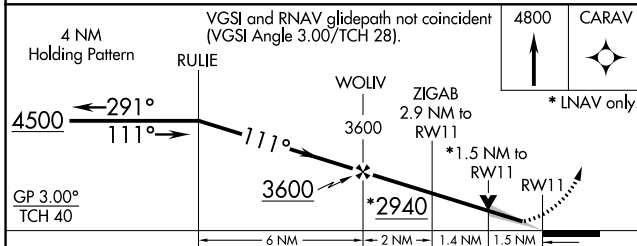
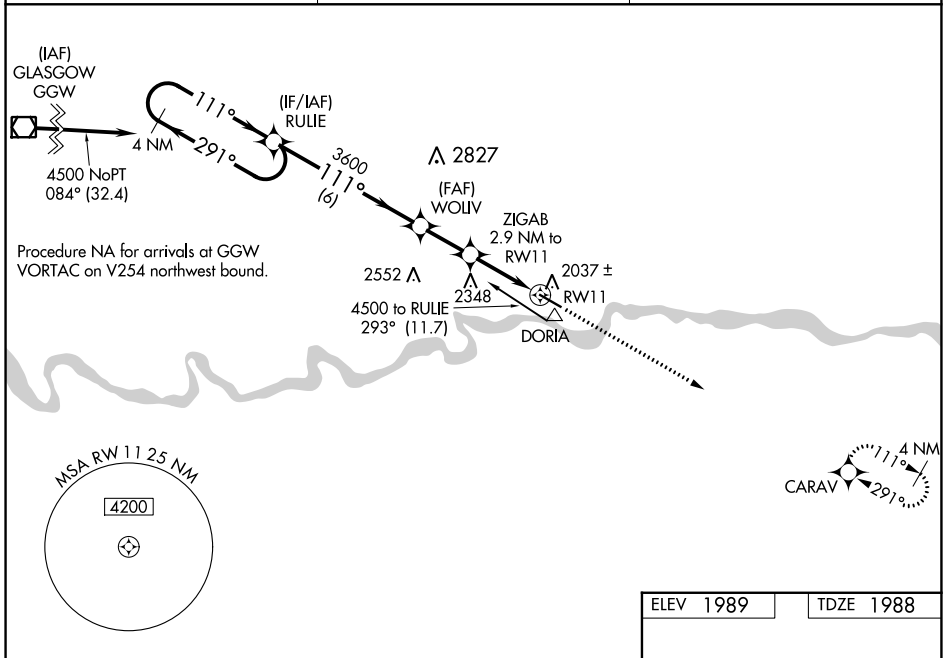
**⚠** For uncompensated Baro-VNAV systems, LNAV/VNAV NA below -18°C (0°F) or above 54°C (130°F). DME/DME RNP-0.3 NA. When local altimeter setting not received, use Wokal FLD/Glasgow-Valley County altimeter setting; increase LPV DA to 2329 ft and visibility 3/8 SM, LNAV/VNAV DA to 2407 ft and visibility 1/2 SM; increase all MDA 160 feet and LNAV and Circling visibility Cat C/D 1/2 SM. Baro-VNAV and VDP NA with Glasgow altimeter setting.

**MISSED APPROACH:**  
Climb to 4800 direct CARAV and hold.

**ASOS**  
**118.325**

**SALT LAKE CENTER**  
**126.85 305.2**

**UNICOM**  
**122.8 (CTAF) 0**



ELEV 1989	TDZE 1988
MRL Rwy 11-29 0 REIL Rwy 11-29 0	

CATEGORY	A	B	C	D
LPV DA		2188-3/4	200 (200-3/4)	
LNAV/VNAV DA		2266-7/8	278 (300-7/8)	
LNAV MDA	2500-1	512 (600-1)	2500-1 3/8	512 (600-1 3/8)
CIRCLING	2500-1	511 (600-1)	2660-2 671 (700-2)	2780-2 1/2 791 (800-2 1/2)

NW-1, 22 FEB 2024 to 21 MAR 2024

NW-1, 22 FEB 2024 to 21 MAR 2024

WAAS CH <b>49229</b> <b>W29A</b>	APP CRS <b>291°</b>	Rwy Idg TDZE Apt Elev	<b>5091</b> <b>1989</b> <b>1989</b>
--	------------------------	-----------------------------	---

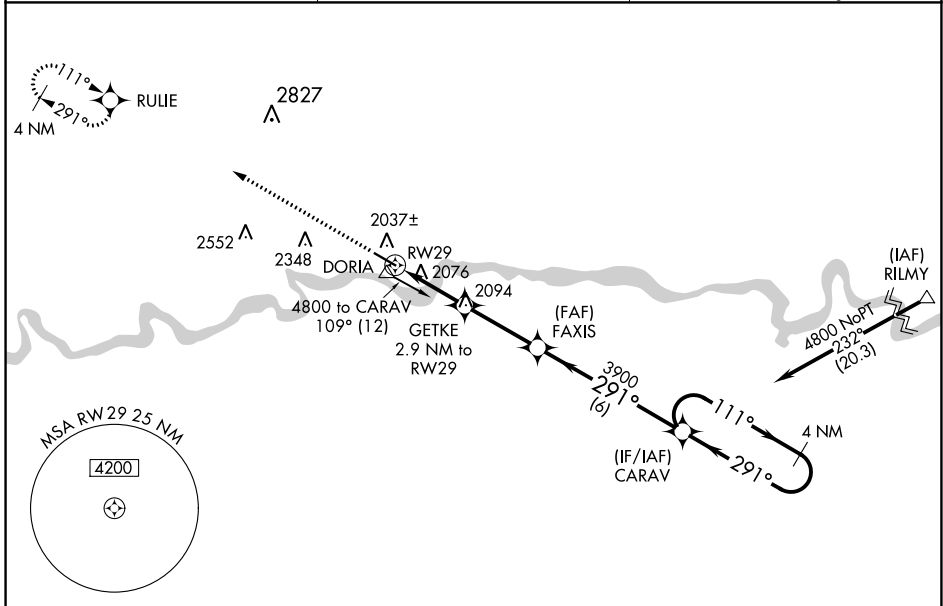
# RNAV (GPS) RWY 29

L M CLAYTON (OLF)

**⚠** For uncompensated Baro-VNAV systems, LNAV/VNAV NA below -18°C (0°F) or above 54°C (130°F). DME/DME RNP-0.3 NA. When local altimeter setting not received, use Wokal FLD/Glasgow-Valley County altimeter setting; increase LPV DA to 2330 ft and visibility 3/8 SM, LNAV/VNAV DA to 2380 ft and visibility 1/2 SM; increase all MDA 160 feet and LNAV and Circling visibility Cat C/D 1/2 SM. Baro-VNAV and VDP NA with Glasgowl altimeter setting.

**MISSED APPROACH:**  
Climb to 4500 direct  
RULIE and hold.

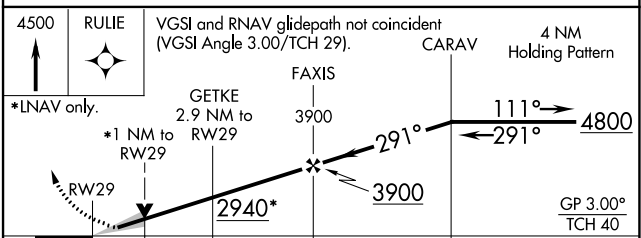
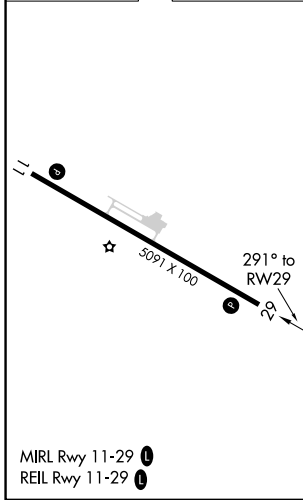
ASOS <b>118.325</b>	SALT LAKE CENTER <b>126.85 305.2</b>	UNICOM <b>122.8 (CTAF) 0</b>
------------------------	---	---------------------------------



NW-1, 22 FEB 2024 to 21 MAR 2024

NW-1, 22 FEB 2024 to 21 MAR 2024

ELEV 1989	TDZE 1989
-----------	-----------



CATEGORY	A	B	C	D
LPV DA		2189-3/4	200 (200-3/4)	
LNAV/VNAV DA		2239-7/8	250 (300-7/8)	
LNAV MDA		2340-1	351 (400-1)	
CIRCLING	2480-1	491 (500-1)	2660-2	2780-2 1/2
			671 (700-2)	791 (800-2 1/2)

INSTRUMENT APPROACH PROCEDURE CHARTS

**A** IFR ALTERNATE AIRPORT MINIMUMS

Pilots must review the IFR Alternate Minimums Notes to determine alternate airport suitability.

**A**NA designation on the approach chart means that pilots may not use that approach as an alternate due to unmonitored facility, absence of weather reporting service, or lack of adequate navigation coverage. Approaches with the **A**NA designation are not listed in this section. **A** designation on the approach chart indicates that the approach procedure has non-standard minimums (for aircraft other than helicopters) or restrictions (for all users) for its use as an alternate.

Alternate Minima (ref: 14 CFR 91.169)

	Precision Approach	Non-Precision Approach
Standard	<b>600-2</b>	<b>800-2</b>
<b>A</b> Non-Standard or restrictions	As indicated below	As indicated below
Helicopters	For the selected approach: Ceiling: 200' above published ceiling Visibility: the greater of 1 SM visibility or the published visibility	
US Military (USA/USN/USAF)	See Service Regulations	

**Note:** For alternate airport flight planning purposes, precision approach operations include: ILS, PAR, and GLS, and Non-Precision approach operations include: NDB, VOR, LOC, TACAN, LDA, SDF, ASR, RNAV (GPS) and RNAV (RNP).

NAME ALTERNATE MINIMUMS

**AFTON, WY**

AFTON MUNI (AFO).....**RNAV (GPS) Rwy 16**  
Categories A, B, 1700-2; Category C, 1700-3.

**ARLINGTON, WA**

ARLINGTON  
MUNI (AWO).....**RNAV (GPS) Rwy 34**  
NA when local weather not available.  
Category C, 900-2½; Category D, 900-3.

**ASTORIA, OR**

ASTORIA  
RGNL (AST).....**RNAV (GPS) Rwy 8<sup>1</sup>**  
**RNAV (GPS) Rwy 26<sup>2</sup>**  
**VOR Rwy 8<sup>13</sup>**

<sup>1</sup>Category C, 1100-3; Category D, 1200-3.  
<sup>2</sup>Categories A, B, 900-2; Category C, 1100-3; Category D, 1200-3.  
<sup>3</sup>NA when local weather not available.

**AURORA, OR**

AURORA STATE (UAO).....**LOC Rwy 17<sup>1</sup>**  
**RNAV (GPS) Rwy 17<sup>2</sup>**  
**RNAV (GPS) Rwy 35<sup>2</sup>**

NA when local weather not available.  
<sup>1</sup>Categories C, D, 800-2½.  
<sup>2</sup>Category D, 800-2¼.

NAME ALTERNATE MINIMUMS

**BAKER, MT**

BAKER  
MUNI (BHK).....**RNAV (GPS) Rwy 13**  
**RNAV (GPS) Rwy 31**  
Category D, 900-2¾.

**BAKER CITY, OR**

BAKER CITY  
MUNI (BKE).....**RNAV (GPS) Rwy 13<sup>1</sup>**  
**VOR-A<sup>23</sup>**  
**VOR/DME Rwy 13<sup>45</sup>**

<sup>1</sup>Categories A, B, 900-2; Category C, 1200-3; Category D, 1400-3.  
<sup>2</sup>NA when local weather not available.  
<sup>3</sup>Categories A, B, 1900-2; Categories C, D, 1900-3.  
<sup>4</sup>Category D, 900-2¾.  
<sup>5</sup>NA when control zone not in effect.

**BELLINGHAM, WA**

BELLINGHAM  
INTL (BLI).....**ILS or LOC Rwy 16<sup>1</sup>**  
**RNAV (GPS) Y Rwy 16<sup>2</sup>**  
**RNAV (GPS) Y Rwy 34<sup>2</sup>**  
**RNAV (RNP) Z Rwy 34**

NA when local weather not available.  
<sup>1</sup>LOC, Category D, 1000-3.  
<sup>2</sup>Category D, 1000-3

22 FEB 2024 to 21 MAR 2024

22 FEB 2024 to 21 MAR 2024

NAME ALTERNATE MINIMUMS

**BEND, OR**

BEND MUNI (BDN)..... RNAV (GPS) Rwy 34  
RNAV (GPS) Y Rwy 16  
RNAV (GPS) Z Rwy 16  
VOR Rwy 16

Category D, 1200-3.  
NA when local weather not available.

**BIG PINEY, WY**

MILEY MEML FLD (BPI).....RNAV (GPS) Rwy 31  
NA when local weather not available.  
Category C, 900-2¼; Category D, 900-2¾.

**BIG TIMBER, MT**

BIG TIMBER AT  
HOWARD FLD (6S0).....RNAV (GPS) Rwy 6  
RNAV (GPS) Rwy 24

Category D, 900-2¾.

**BILLINGS, MT**

BILLINGS LOGAN  
INTL (BIL).....ILS or LOC Rwy 28R<sup>1</sup>  
ILS Y or LOC Y Rwy 10L<sup>1</sup>  
RNAV (GPS) Rwy 7<sup>2</sup>  
RNAV (GPS) Rwy 10L<sup>2</sup>  
RNAV (GPS) Rwy 25<sup>2</sup>  
RNAV (GPS) Y Rwy 28R<sup>2</sup>

<sup>1</sup>LOC, Category D, 1000-3.  
<sup>2</sup>Category D, 1000-3.

**BOISE, ID**

BOISE AIR TRML/GOWEN  
FLD (BOI).....ILS or LOC Rwy 28R<sup>1</sup>  
ILS Y or LOC Y Rwy 10R<sup>2</sup>  
RNAV (GPS) Y Rwy 10L<sup>3</sup>  
RNAV (GPS) Y Rwy 10R<sup>3</sup>  
RNAV (GPS) Y Rwy 28L<sup>3</sup>  
RNAV (GPS) Y Rwy 28R<sup>4</sup>  
VOR or TACAN Rwy 10L<sup>5</sup>  
VOR Y or TACAN Y Rwy 28L<sup>5</sup>

<sup>1</sup>LOC, Categories A, B 900-2, Category C 900-2½,  
Category D 1000-3.  
<sup>2</sup>LOC, Category C, 800-2¼; Category D, 1000-3.  
<sup>3</sup>Category C, 800-2¼; Category D, 1000-3.  
<sup>4</sup>Category C, 900-2½; Category D, 1000-3.  
<sup>5</sup>Category C, 800-2¼; Category D, 1000-3;  
Category E, 1100-3.

NAME ALTERNATE MINIMUMS

**BOZEMAN, MT**

BOZEMAN YELLOWSTONE  
INTL (BZN).....ILS or LOC Rwy 12<sup>12</sup>  
RNAV (GPS)-A<sup>3</sup>  
RNAV (GPS) Y Rwy 12<sup>4</sup>  
RNAV (GPS) Y Rwy 30<sup>5</sup>  
VOR Rwy 12<sup>6</sup>

<sup>1</sup>LOC, Category D, 900-3.  
<sup>2</sup>NA when local weather not available.  
<sup>3</sup>Categories A, B, 1600-2; Category C, 1600-3;  
Category D, 1900-3.  
<sup>4</sup>Category D, 900-3.  
<sup>5</sup>Category D, 900-2¾.  
<sup>6</sup>Categories A, B, 1000-2; Categories C, D, 1000-3.

**BREMERTON, WA**

BREMERTON  
NTL (PWT).....ILS or LOC Rwy 10<sup>1</sup>  
RNAV (GPS) Rwy 2<sup>2</sup>  
RNAV (GPS) Rwy 20<sup>3</sup>

NA when local weather not available.  
<sup>1</sup>LOC, Category C, 800-2¼; Category D, 800-2½.  
<sup>2</sup>Category D, 800-2½.  
<sup>3</sup>Categories A, B, C, D, 1000-4.

**BROOKINGS, OR**

BROOKINGS (BOK).....RNAV (GPS)-A  
NA when local weather not available.  
Categories A, B, 1200-2.

**BUFFALO, WY**

JOHNSON  
COUNTY (BYG).....RNAV (GPS) Rwy 31  
VOR/DME Rwy 31<sup>1</sup>

NA when local weather not available.  
<sup>1</sup>Category C, 800-2¼; Category D, 800-2½.

**BURLEY, ID**

BURLEY MUNI (BYI).....RNAV (GPS) Rwy 20  
VOR-A

NA when local weather not available.

**BURLINGTON/MOUNT VERNON, WA**

SKAGIT RGNL (BVS).....RNAV (GPS) Rwy 11  
RNAV (GPS) Rwy 29

NA when local weather not available.  
Category D, 900-2¾.

**BURNS, OR**

BURNS MUNI (BNO).....VOR Rwy 30  
Categories A, B, 1400-2; Categories C, D,  
1400-3.

**BUTTE, MT**

BERT MOONEY (BTM).....RNAV (GPS) Rwy 15<sup>1</sup>  
VOR-A<sup>2</sup>

<sup>1</sup>Categories A, B, 1300-2; Categories C, D, 1600-3.  
<sup>2</sup>Categories A, B, 1600-2; Categories C, D, 1600-3.

22 FEB 2024 to 21 MAR 2024

22 FEB 2024 to 21 MAR 2024

NAME ALTERNATE MINIMUMS

**CALDWELL, ID**

CALDWELL EXEC (EUL).....RNAV (GPS) Rwy 12  
RNAV (GPS) Rwy 30

NA when local weather not available.

**CASPER, WY**

CASPER/NATRONA  
COUNTY INTL (CPR).....ILS or LOC Rwy 3<sup>12</sup>  
RNAV (GPS) Rwy 3<sup>3</sup>  
RNAV (GPS) Rwy 8<sup>3</sup>  
RNAV (GPS) Rwy 21<sup>3</sup>  
RNAV (GPS) Rwy 26<sup>3</sup>  
VOR/DME Rwy 21<sup>3</sup>

NA when local weather not available.

<sup>1</sup>NA when control tower closed.

<sup>2</sup>LOC, Categories A, B, 900-2;

Category C, 900-2½; Category D, 900-2¾.

<sup>3</sup>Category D, 900-2¾.

**CHEHALIS, WA**

CHEHALIS-  
CENTRALIA (CLS).....RNAV (GPS) Rwy 16  
NA when local weather not available.  
Category B, 1000-2; Category C 1100-3;  
Category D 1200-3.

**CHEYENNE, WY**

CHEYENNE RGNL/JERRY OLSON  
FLD (CYS).....ILS or LOC Rwy 27<sup>1</sup>  
RNAV (GPS) Rwy 9<sup>2</sup>  
RNAV (GPS) Rwy 13<sup>2</sup>  
RNAV (GPS) Rwy 27<sup>2</sup>  
RNAV (GPS) Rwy 31<sup>2</sup>  
VOR or TACAN-A<sup>2</sup>

<sup>1</sup>ILS, Category C, 800-2; Category D, 800-2½;

LOC, Category D, 800-2½.

<sup>2</sup>Category D, 800-2½.

**CODY, WY**

YELLOWSTONE  
RGNL (COD).....RNAV (GPS) Rwy 4<sup>1</sup>  
RNAV (GPS) Rwy 22<sup>2</sup>  
RNAV (GPS)-B<sup>3</sup>  
VOR-A<sup>4</sup>

NA when local weather not available.

<sup>1</sup>Categories A, B, C, 900-2½; Category D, 1900-3.

<sup>2</sup>Category C, 900-2½; Category D, 1900-3.

<sup>3</sup>Categories A, B, 1100-2; Category C, 1100-3;

Category D, 1900-3.

<sup>4</sup>Category B, 900-2; Category C, 900-2½;

Category D, 1900-3.

**COEUR D'ALENE, ID**

COEUR D'ALENE/PAPPY BOYINGTON  
FLD (COE).....ILS or LOC Rwy 6<sup>1</sup>  
RNAV (GPS) Rwy 2<sup>2</sup>  
RNAV (GPS) Rwy 6<sup>3</sup>

NA when local weather not available.

<sup>1</sup>LOC, Category D, 900-2¾.

<sup>2</sup>Category D, 1700-3.

<sup>3</sup>Category D, 900-2¾.

NAME ALTERNATE MINIMUMS

**CORVALLIS, OR**

CORVALLIS  
MUNI (CVO).....ILS or LOC Rwy 17<sup>1</sup>  
RNAV (GPS) Rwy 17<sup>23</sup>  
RNAV (GPS) Rwy 35<sup>23</sup>  
VOR Rwy 17<sup>23</sup>  
VOR-A<sup>4</sup>

<sup>1</sup>LOC, Category D, 900-2½.

<sup>2</sup>NA when local weather not available.

<sup>3</sup>Category D, 900-2¾.

<sup>4</sup>Categories A, B, 1200-2; Categories C, D, 1200-3.

**CUT BANK, MT**

CUT BANK  
INTL (CTB).....RNAV (GPS) Rwy 5  
RNAV (GPS) Rwy 14  
RNAV (GPS) Rwy 23  
RNAV (GPS) Rwy 32  
VOR Rwy 32

NA when local weather not available.

Category D, 800-2½.

**DEER PARK, WA**

DEER PARK (DEW).....RNAV (GPS) Rwy 34  
NA when local weather not available.

**DILLON, MT**

DILLON (DLN).....RNAV (GPS) Rwy 17<sup>2</sup>  
RNAV (GPS) Rwy 35<sup>2</sup>  
VOR-A<sup>1</sup>  
VOR/DME-B<sup>2</sup>

<sup>1</sup>Categories A, B, 2900-2; Categories C, D, 2900-3.

<sup>2</sup>Category D, 1100-3.

**DIXON, WY**

DIXON (DWX).....RNAV (GPS) Rwy 24  
Categories A, B, 900-2; Category C, 900-2¾;  
Category D, 1400-3.

**DOUGLAS, WA**

CONVERSE COUNTY  
(DGW).....RNAV (GPS) Rwy 29<sup>1</sup>  
VOR Rwy 29<sup>2</sup>

NA when local weather not available.

<sup>1</sup>Category C, 800-2½; Category D, 900-3.

<sup>2</sup>Categories A, B, 1100-2; Categories C, D, 1100-3.

**DRIGGS, ID**

DRIGGS/REED  
MEML (DIJ).....RNAV (GPS) Rwy 4<sup>1</sup>  
RNAV (GPS)-A

Category D, 1200-3.

<sup>1</sup>NA when local weather not available.

## NAME ALTERNATE MINIMUMS

**EASTSOUND, WA**

ORCAS ISLAND (ORS).....RNAV (GPS)-A  
**RNAV (GPS) Rwy 16**  
**RNAV (GPS) Rwy 34**

NA when local weather not available.  
 Category A, 1100-2; Category B, 1800-2.

**ELLENSBURG, WA**

BOWERS FLD (ELN).....RNAV (GPS) Rwy 29  
**RNAV (GPS)-C<sup>1</sup>**  
**VOR-B<sup>2</sup>**

NA when local weather not available.  
<sup>1</sup>Categories A, B, 900-2; Category C, 900-2 $\frac{1}{2}$ ;  
 Category D, 1000-3.  
<sup>2</sup>Category A, 1500-2.

**ENNIS, MT**

ENNIS BIG SKY (EKS).....RNAV (GPS) Rwy 16<sup>1</sup>  
**RNAV (GPS) Rwy 34<sup>2</sup>**

<sup>1</sup>Categories A, B, C, D, 1200-5.  
<sup>2</sup>Categories A, B, 900-2; Categories C, D, 900-2 $\frac{1}{2}$ .

**EPHRATA, WA**

EPHRATA MUNI (EPH).....RNAV (GPS) Rwy 3<sup>1</sup>  
**RNAV (GPS) Rwy 21<sup>2</sup>**  
**VOR Rwy 21<sup>1</sup>**

NA when local weather not available.  
<sup>1</sup>Category D, 1300-3.  
<sup>2</sup>Category C, 800-2 $\frac{1}{4}$ ; Category D, 1300-3.

**EUGENE, OR**

MAHLON SWEET  
 FLD (EUG).....ILS or LOC Rwy 16L<sup>1</sup>  
**ILS or LOC Rwy 16R<sup>1</sup>**  
**RNAV (GPS) Y Rwy 16L<sup>23</sup>**  
**RNAV (GPS) Y Rwy 16R<sup>2</sup>**  
**RNAV (GPS) Y Rwy 34L<sup>2</sup>**  
**RNAV (GPS) Y Rwy 34R<sup>2</sup>**  
**VOR or TACAN Rwy 34L<sup>2</sup>**

<sup>1</sup>LOC, Category D, 800-2 $\frac{1}{2}$ .  
<sup>2</sup>Category D, 800-2 $\frac{1}{2}$ .  
<sup>3</sup>NA when local weather not available.

**EVANSTON, WY**

EVANSTON-UINTA COUNTY BURNS  
 FLD (EVW).....ILS or LOC/DME Rwy 23<sup>1</sup>  
**RNAV (GPS) Rwy 23<sup>2</sup>**  
**VOR/DME Rwy 5<sup>2</sup>**

<sup>1</sup>LOC, Category D, 900-2 $\frac{3}{4}$ .  
<sup>2</sup>Category D, 900-2 $\frac{3}{4}$ .

**EVERETT, WA**

SEATTLE PAINE FLD  
 INTL (PAE).....ILS Y or LOC Y Rwy 16R  
**ILS Z or LOC Z Rwy 16R**

NA when control tower closed.

**FORT BENTON, MT**

FORT BENTON (79S).....RNAV (GPS) Rwy 23  
 NA when local weather not available.

## NAME ALTERNATE MINIMUMS

**FRIDAY HARBOR, WA**

FRIDAY HARBOR (FHR).....RNAV (GPS) Rwy 34  
 NA when local weather not available.

**GILLETTE, WY**

NORTHEAST WYOMING  
 RGNL (GCC).....ILS or LOC Rwy 34<sup>12</sup>  
**RNAV (GPS) Rwy 16<sup>3</sup>**  
**RNAV (GPS) Rwy 34<sup>4</sup>**  
**VOR Rwy 16<sup>5</sup>**

<sup>1</sup>NA when control tower closed.  
<sup>2</sup>LOC Categories A, B, 900-2;  
 Categories C, D, 1100-3.  
<sup>3</sup>Category A, 800-1 $\frac{1}{4}$ ; Category B, 900-1 $\frac{1}{4}$ ;  
 Categories C, D, 1100-3.  
<sup>4</sup>Categories A, B, C, D, 1200-4.  
<sup>5</sup>Category B, 900-2; Categories C, D, 1100-3.

**GLASGOW, MT**

WOKAL FLD/GLASGOW-VALLEY  
 COUNTY (GGW).....RNAV (GPS) Rwy 12  
**RNAV (GPS) Rwy 30**  
**VOR Rwy 12<sup>1</sup>**  
**VOR Rwy 30**

NA when local weather not available.  
<sup>1</sup>Categories A, B, 900-2; Category C, 900-2 $\frac{1}{2}$ ;  
 Category D, 900-2 $\frac{1}{4}$ .

**GLENDEVE, MT**

DAWSON  
 COMMUNITY (GDV).....RNAV (GPS) Rwy 12  
**RNAV (GPS) Rwy 30**  
 Category C, 900-2 $\frac{1}{2}$ ; Category D, 900-2 $\frac{1}{4}$ .

**GOLD BEACH, OR**

GOLD BEACH  
 MUNI (4S1).....RNAV (GPS)-A  
 NA when local weather not available.  
 Categories A, B, 1800-2 $\frac{1}{2}$ ; Category C, 1800-3.

**GOODING, ID**

GOODING MUNI (GNG).....RNAV (GPS) Rwy 7  
**RNAV (GPS) Rwy 25**  
 NA when local weather not available.

**GRANGEVILLE, ID**

IDAHO COUNTY (GIC).....RNAV (GPS) Rwy 8  
**RNAV (GPS) Rwy 26<sup>1</sup>**  
 NA when local weather not available.  
<sup>1</sup>Category C, 800-2 $\frac{1}{4}$ ; Category D, 800-2 $\frac{1}{2}$ .

**GRANTS PASS, OR**

GRANTS PASS (3S8).....RNAV (GPS) Rwy 13  
 Category B, 1000-2; Category C, 1100-3;  
 Category D, 1300-3.

NAME ALTERNATE MINIMUMS

**GRAY AAF (JOINT BASE LEWIS****MCCHORD) (KGRF)**FORT LEWIS, WA.....ILS or LOC Rwy 15  
NA when control tower closed.**GREAT FALLS, MT**

GREAT FALLS

INTL (GTF).....ILS or LOC Rwy 3<sup>1</sup>  
RNAV (GPS) Rwy 17<sup>2</sup>  
RNAV (GPS) Rwy 35<sup>2</sup>  
RNAV (GPS) Y Rwy 3<sup>2</sup>  
RNAV (GPS) Y Rwy 21<sup>2</sup>  
VOR Rwy 21<sup>2</sup><sup>1</sup>ILS, Category C, 700-2; Category D, 800-2¼;

LOC, Category D, 800-2¼.

<sup>2</sup>Category D, 800-2¼.**GREYBULL, WY**

SOUTH BIG HORN

COUNTY (GEY).....RNAV (GPS) Rwy 8  
RNAV (GPS) Rwy 34

NA when local weather not available.

Category C, 1400-3; Category D, 1600-3.

**HAILEY, ID**

FRIEDMAN

MEML (SUN).....RNAV (GPS) X Rwy 31<sup>1</sup>  
RNAV (GPS) Y Rwy 31<sup>2</sup><sup>1</sup>Categories A, B, 1700-2; Categories C, D, 1700-3.<sup>2</sup>Categories A, B, 2100-2; Category C, 2300-3;  
Category D, 2700-3.**HAMILTON, MT**

RAVALLI COUNTY (HRF).....RNAV (GPS) Rwy 17

NA when local weather not available.

**HARDIN, MT**

BIG HORN

COUNTY (00U).....RNAV (GPS) Rwy 26  
NA when local weather not available.**HAVRE, MT**

HAVRE CITY-

COUNTY (HVR).....RNAV (GPS) Rwy 8<sup>1</sup>  
RNAV (GPS) Rwy 26<sup>1</sup>  
VOR Rwy 8<sup>1</sup>  
VOR Rwy 26<sup>2</sup><sup>1</sup>Category C, 800-2¼; Category D, 1200-3.<sup>2</sup>Categories A, B, 900-2; Category C, 900-2¼;  
Category D, 1200-3.

NAME ALTERNATE MINIMUMS

**HELENA, MT**

HELENA

RGNL (HLN).....ILS Y or LOC Y Rwy 27<sup>12</sup>  
ILS Z or LOC Z Rwy 27<sup>13</sup>  
LOC BC-C<sup>14</sup>  
RNAV (GPS) X Rwy 27<sup>5</sup>  
RNAV (GPS) Y Rwy 9<sup>6</sup>  
RNAV (RNP) Z Rwy 27<sup>7</sup>  
VOR-A<sup>8</sup>  
VOR-B<sup>9</sup><sup>1</sup>NA when control tower closed.<sup>2</sup>LOC, Categories A, B, 1800-2;

Categories C, D, E, 2200-3.

<sup>3</sup>LOC, Categories A, B, 1800-2;

Categories C, D, E, 2100-3.

<sup>4</sup>Categories A, B, 1300-2; Category C, 2200-3.<sup>5</sup>Categories A, B, 1100-2½;

Categories C, D, 2200-3.

<sup>6</sup>Categories A, B, 1400-2;

Categories C, D, 2200-3.

<sup>7</sup>Categories A, B, C, D, 1000-4.<sup>8</sup>Categories A, B, 3400-2;

Categories C, D, 3400-3.

<sup>9</sup>Category A, 900-2; Category B, 1000-2;

Categories C, D, 2200-3.

**HERMISTON, OR**

HERMISTON MUNI (HRI).....VOR-A

NA when local weather not available.

**HOQUIAM, WA**BOWERMAN (HQM).....ILS or LOC Rwy 24<sup>1</sup>  
RNAV (GPS) Rwy 6<sup>2</sup>  
RNAV (GPS) Rwy 24<sup>3</sup>  
VOR Rwy 6<sup>2</sup><sup>1</sup>LOC, Category C, 800-2¼.<sup>2</sup>Category C, 800-2¼; Category D, 900-2¼.<sup>3</sup>Category C, 800-2¼.**HULETT, WY**

HULETT

MUNI (W43).....RNAV (GPS)-A  
RNAV (GPS) Rwy 13<sup>1</sup>

NA when local weather not available.

<sup>1</sup>Categories A, B, 900-2; Category C, 900-2½;

Category D, 1200-3.

**IDAHO FALLS, ID**

IDAHO FALLS

RGNL (IDA).....ILS or LOC Rwy 21<sup>14</sup>  
LOC BC Rwy 3<sup>12</sup>  
RNAV (GPS) Y Rwy 3<sup>34</sup>  
RNAV (GPS) Y Rwy 21<sup>34</sup>  
RNAV (RNP) Z Rwy 3<sup>4</sup>  
RNAV (RNP) Z Rwy 21<sup>4</sup>  
VOR Rwy 3<sup>3</sup>  
VOR Rwy 21<sup>3</sup><sup>1</sup>LOC, Category D, 800-2¼; Category E, 800-2½.<sup>2</sup>NA when control tower closed.<sup>3</sup>Category D, 800-2¼;<sup>4</sup>NA when local weather not available.



NAME ALTERNATE MINIMUMS

**JACKSON, WY**

JACKSON  
HOLE (JAC).....**ILS Y or LOC Y Rwy 19<sup>1</sup>**  
**ILS Z or LOC Z Rwy 19<sup>2</sup>**  
**RNAV (GPS) X Rwy 1<sup>3</sup>**  
**RNAV (GPS) Z Rwy 19<sup>4</sup>**  
**RNAV (RNP) Y Rwy 1, 1000-4<sup>5</sup>**  
**VOR Rwy 1<sup>5</sup>**  
**VOR Rwy 19<sup>6</sup>**

<sup>1</sup>LOC, Categories A, B, 1100-2;  
Categories C, D, 1100-3.

<sup>2</sup>LOC, Category C, 1000-3.

<sup>3</sup>Categories A, B, C, D, 1200-4.

<sup>4</sup>Category C, 1000-3.

<sup>5</sup>Categories A, B, 1400-2;

Categories C, D, 1400-3.

<sup>6</sup>Categories A, B, 1500-2;  
Categories C, D, 1500-3.

**JEROME, ID**

JEROME  
COUNTY (JER).....**RNAV (GPS) Rwy 9<sup>1</sup>**  
**RNAV (GPS) Rwy 27<sup>2</sup>**  
**VOR-A**

NA when local weather not available.

<sup>1</sup>Categories C, D, 900-2½.

<sup>2</sup>Categories A, B, 1300-2; Categories C, D, 1300-3.

**JOHN DAY, OR**

GRANT COUNTY RGNL/OGILVIE  
FLD (GCD).....**RNAV (GPS) Y Rwy 9**  
Category B, 900-2; Category C, 1500-3.

**JOSEPH, OR**

JOSEPH STATE (JSY).....**RNAV (GPS)-A**  
Category A, 900-2; Category B, 1400-2.

**KALISPELL, MT**

GLACIER PARK  
INTL (GPI).....**ILS or LOC Rwy 2<sup>1</sup>**  
**RNAV (GPS) Rwy 30<sup>2</sup>**  
**RNAV (GPS) Z Rwy 2<sup>2</sup>**  
**RNAV (RNP) Y Rwy 2<sup>3</sup>**  
**VOR/DME Rwy 30<sup>2</sup>**

<sup>1</sup>LOC, Category A, B, 1500-2;  
Category C, D, 1500-3.

<sup>2</sup>Category D, 800-2½.

<sup>3</sup>NA when local weather not available.

**KELSO, WA**

SOUTHWEST WASHINGTON  
RGNL (KLS).....**RNAV (GPS) Rwy 12**  
NA when local weather not available.  
Categories A, B, 1000-2.

NAME ALTERNATE MINIMUMS

**KEMMERER, WY**

KEMMERER  
MUNI (EMM).....**RNAV (GPS) Rwy 16**  
**RNAV (GPS) Rwy 34**  
NA when local weather not available.  
Category B, 1000-2.

**KLAMATH FALLS, OR**

CRATER LAKE/KLAMATH  
RGNL (LMT).....**ILS or LOC/DME Rwy 32<sup>12</sup>**  
**RNAV (GPS) Rwy 14<sup>3</sup>**  
**RNAV (GPS) Rwy 32<sup>4</sup>**  
**VOR/DME or TACAN Rwy 14<sup>5</sup>**  
**VOR/DME or TACAN Rwy 32<sup>5</sup>**

<sup>1</sup>ILS, Category A, 800-2; Category B, 900-2;  
Category C, 1400-3; Category D, 1600-3. LOC,  
Category B, 900-2; Category C, 1400-3;  
Category D, 1600-3.

<sup>2</sup>NA when control tower closed.

<sup>3</sup>Category A, B, 900-2. Category C, 1400-3;  
Category D, 1600-3.

<sup>4</sup>Category B, 900-2; Category C, 1400-3;  
Category D, 1600-3.

<sup>5</sup>Category B, 900-2; Category C, 1400-3;  
Category D, 1600-3; Category E, 1700-3.

**LAKEVIEW, OR**

LAKE COUNTY (LKV).....**RNAV (GPS) Rwy 17**  
**RNAV (GPS) Rwy 35**  
Category D, 800-2½.

**LANDER, WY**

HUNT FLD (LND).....**RNAV (GPS) Rwy 22**  
Categories A, B, 900-2; Category C, 1000-3.

**LARAMIE, WY**

LARAMIE RGNL (LAR).....**RNAV (GPS) Rwy 3**  
**RNAV (GPS) Rwy 21**  
NA when local weather not available.

**LAUREL, MT**

LAUREL  
MUNI (6S8).....**RNAV (GPS) Rwy 4<sup>1</sup>**  
**RNAV (GPS) Rwy 22<sup>1</sup>**  
**VOR Rwy 22<sup>23</sup>**

<sup>1</sup>Category D, 800-2½.

<sup>2</sup>Categories A, B, 900-2; Category C, 1000-2¾;  
Category D, 1100-3.

<sup>3</sup>NA when local weather not available.

**LEWISTON, ID**

LEWISTON/NEZ PERCE  
COUNTY (LWS).....**ILS Rwy 12<sup>12</sup>**  
**RNAV (GPS) Y Rwy 8<sup>3</sup>**  
**RNAV (GPS) Y Rwy 26<sup>3</sup>**  
**RNAV (RNP) Z Rwy 8<sup>2</sup>**  
**RNAV (RNP) Z Rwy 26<sup>2</sup>**

<sup>1</sup>NA when control tower closed.

<sup>2</sup>NA when local weather not available.

<sup>3</sup>Category C, 900-2½; Category D, 1100-3.

22 FEB 2024 to 21 MAR 2024

22 FEB 2024 to 21 MAR 2024

NAME ALTERNATE MINIMUMS

**LEWISTOWN, MT**

LEWISTOWN  
MUNI (LWT).....RNAV (GPS) Rwy 8  
RNAV (GPS) Rwy 26  
VOR Rwy 8  
Category C, 900-2¼; Category D, 1100-3.

**LIVINGSTON, MT**

MISSION FLD (LVM).....RNAV (GPS) Rwy 22<sup>1</sup>  
VOR/DME-B<sup>2</sup>

<sup>1</sup>Category C, 800-2¼; Category D, 2100-3.  
<sup>2</sup>Categories A, B, 900-2; Category C, 900-2¾.

**MADRAS, OR**

MADRAS MUNI (S33).....RNAV (GPS) Rwy 34  
NA when local weather not available.

**MC CALL, ID**

MC CALL MUNI (MYL).....RNAV (GPS) Rwy 16<sup>1</sup>  
RNAV (GPS) Rwy 34<sup>23</sup>

<sup>1</sup>Categories A, B, 1000-2; Category C, 1200-3.  
<sup>2</sup>Category B, 900-2; Category C, 1200-3;  
Category D, 1700-3.  
<sup>3</sup>NA when local weather not available.

**MC MINNVILLE, OR**

MC MINNVILLE  
MUNI (MMV).....ILS or LOC Rwy 22<sup>1</sup>  
RNAV (GPS) Rwy 4<sup>2</sup>  
RNAV (GPS) Rwy 22  
VOR/DME-B<sup>3</sup>

NA when local weather not available.  
<sup>1</sup>LOC, Category C, 800-2¼; Category D, 1200-3.  
<sup>2</sup>Category D, 800-2¼.  
<sup>3</sup>Category C, 800-2¼; Category D, 1200-3.

**MEDFORD, OR**

ROGUE VALLEY INTL-  
MEDFORD (MFR).....ILS or LOC Rwy 14<sup>12</sup>  
LOC/DME BC-B<sup>23</sup>  
RNAV (GPS)-D<sup>3</sup>  
RNAV (GPS) Y Rwy 14<sup>4</sup>  
VOR-A<sup>5</sup>  
VOR/DME-C<sup>3</sup>  
VOR/DME Rwy 14<sup>5</sup>

<sup>1</sup>ILS, Categories A, B, C, D, 700-2;  
LOC, Category C, 800-2¼; Category D, 1100-3.  
<sup>2</sup>NA when control tower closed.  
<sup>3</sup>Categories A, B, 2300-2; Categories C, D, 2300-3.  
<sup>4</sup>Categories A, B, 1300-2; Category C, 2000-3;  
Category D, 2200-3.  
<sup>5</sup>Categories A, B, 1400-2; Category C, D, 1400-3.

NAME ALTERNATE MINIMUMS

**MILES CITY, MT**

FRANK WILEY  
FLD (MLS).....RNAV (GPS) Rwy 4  
RNAV (GPS) Rwy 13  
RNAV (GPS) Rwy 22  
RNAV (GPS) Rwy 31  
VOR Rwy 4  
VOR Rwy 22

NA when local weather not available.  
Category D, 800-2¼.

**MISSOULA, MT**

MISSOULA  
MONTANA (MSO).....ILS Z Rwy 12<sup>1</sup>  
RNAV (GPS)-D<sup>2</sup>  
RNAV (GPS) Y Rwy 12<sup>3</sup>  
RNAV (RNP) Rwy 30<sup>4</sup>  
RNAV (RNP) Z Rwy 12<sup>4</sup>  
VOR-A<sup>5</sup>  
VOR-B<sup>6</sup>

<sup>1</sup>NA when control tower closed.  
<sup>2</sup>Category A, 1100-2; Category B, 1500-2;  
Category C, 1500-3; Category D, 2000-3.  
<sup>3</sup>Category A, 1400-2; Category B, 1500-2;  
Category C, 1500-3; Category D, 2000-3.  
<sup>4</sup>NA when local weather not available.  
<sup>5</sup>Categories A, B, 2000-2; Categories C, D,  
2000-3.  
<sup>6</sup>Categories A, B, 1800-2; Category C, 1800-3;  
Category D, 2000-3.

**MOSES LAKE, WA**

GRANT COUNTY  
INTL (MWH).....ILS or LOC Rwy 32R<sup>1</sup>  
NDB Rwy 32R<sup>2</sup>  
RNAV (GPS) Y Rwy 4<sup>1</sup>  
RNAV (GPS) Y Rwy 14L<sup>1</sup>  
RNAV (GPS) Y Rwy 22<sup>1</sup>  
RNAV (GPS) Y Rwy 32R<sup>1</sup>  
RNAV (RNP) Z Rwy 4<sup>1</sup>  
RNAV (RNP) Z Rwy 22<sup>1</sup>  
RNAV (RNP) Z Rwy 32R<sup>1</sup>  
VOR Rwy 4<sup>2</sup>  
VOR-1 Rwy 14L<sup>23</sup>  
VOR-3 Rwy 14L<sup>2</sup>  
VOR Rwy 22<sup>2</sup>  
VOR Rwy 32R<sup>2</sup>

<sup>1</sup>NA when local weather not available.  
<sup>2</sup>NA when control tower closed.  
<sup>3</sup>Category D 800-2¼.

**NAMPA, ID**

NAMPA  
MUNI (MAN).....RNAV (GPS) Rwy 11  
RNAV (GPS)-B<sup>1</sup>

Category D, 800-2¼.  
<sup>1</sup>NA when local weather not available.

NAME ALTERNATE MINIMUMS

**NEWCASTLE, WY**

MONDELL FLD (ECS).....RNAV (GPS) Rwy 14<sup>2</sup>  
RNAV (GPS) Rwy 32<sup>3</sup>  
VOR Rwy 32<sup>1</sup>

- <sup>1</sup>Categories A, B, 900-2; Category C, 900-2½;
- Category D, 900-2¾.
- <sup>2</sup>Category C, 800-2¼; Category D, 900-2¾.
- <sup>3</sup>Category D, 900-2¾.

**NEWPORT, OR**

NEWPORT MUNI (ONP)....RNAV (GPS) Rwy 16<sup>12</sup>  
RNAV (GPS) Rwy 34<sup>2</sup>  
VOR-A<sup>3</sup>

- <sup>1</sup>NA when local weather not available.
- <sup>2</sup>Category B, 900-2; Category C, 1300-3;
- Category D, 1500-3.
- <sup>3</sup>Categories A, B, 900-2; Category C, 1300-3;
- Category D, 1500-3.

**NORTH BEND, OR**

SOUTHWEST OREGON  
RGNL (OTH).....ILS or LOC Rwy 5<sup>1</sup>  
RNAV (GPS) Y Rwy 5<sup>2</sup>  
VOR-B<sup>2</sup>

- <sup>1</sup>LOC, Category B, 900-2.
- <sup>2</sup>Category B, 900-2; Category C, 1100-3,
- Category D, 1200-3.

**OAK HARBOR, WA**

DELAURENTIS (OKH).....RNAV (GPS) Rwy 7  
NA when local weather not available.

**OLYMPIA, WA**

OLYMPIA  
RGNL (OLM).....ILS or LOC Rwy 17<sup>12</sup>  
RNAV (GPS) Rwy 17<sup>3</sup>  
RNAV (GPS) Rwy 35<sup>3</sup>  
VOR Rwy 35<sup>3</sup>  
VOR-A<sup>3</sup>

- <sup>1</sup>NA when tower closed.
- <sup>2</sup>ILS, Category B, 700-2; Category C, 900-2½;
- Category D, 900-2¾; LOC, Category C, 900-2½;
- Category D, 900-2¾.
- <sup>3</sup>Category C, 900-2½; Category D, 900-2¾.

**ONTARIO, OR**

ONTARIO MUNI (ONO).....RNAV (GPS) Rwy 15  
RNAV (GPS) Rwy 33

NA when local weather not available.  
Category C, 1000-2¾; Category D, 1100-3.

**PARIS, ID**

BEAR LAKE  
COUNTY (1U7).....RNAV (GPS) Rwy 10  
RNAV (GPS) Rwy 28  
Category C, 800-2¼; Category D, 1300-3.

NAME ALTERNATE MINIMUMS

**PASCO, WA**

TRI-CITIES (PSC).....ILS or LOC Rwy 21R<sup>12</sup>  
RNAV (GPS) Y Rwy 3L<sup>3</sup>  
RNAV (GPS) Y Rwy 12<sup>3</sup>  
RNAV (GPS) Y Rwy 21R<sup>3</sup>  
RNAV (GPS) Y Rwy 30<sup>3</sup>  
VOR Rwy 21R<sup>3</sup>  
VOR Rwy 30<sup>3</sup>

- NA when local weather not available.
- <sup>1</sup>NA when control tower closed.
- <sup>2</sup>LOC, Category D, 800-2¼.
- <sup>3</sup>Category D, 800-2¼.

**PENDLETON, OR**

EASTERN OREGON RGNL AT  
PENDLETON (PDT).....ILS or LOC Rwy 26<sup>12</sup>  
RNAV (GPS) Rwy 8<sup>3</sup>  
RNAV (GPS) Rwy 11<sup>3</sup>  
RNAV (GPS) Rwy 26<sup>3</sup>  
RNAV (GPS) Rwy 29<sup>3</sup>  
VOR Rwy 8<sup>3</sup>

- NA when local weather not available.
- <sup>1</sup>NA when control tower closed.
- <sup>2</sup>LOC, Category D, 800-2¼.
- <sup>3</sup>Category D, 800-2¼.

**PINEDALE, WY**

RALPH WENZ  
FLD (PNA).....RNAV (GPS) Rwy 11  
RNAV (GPS) Rwy 29  
NA when local weather not available.  
Category C, 800-2¼; Category D, 900-3.

**PLENTYWOOD, MT**

SHER-WOOD (PWD)..... RNAV (GPS) Rwy 12  
RNAV (GPS) Rwy 30  
NA when local weather not available.  
Category D, 900-2¾.

**POCATELLO, ID**

POCATELLO  
RGNL (PIH).....ILS or LOC Rwy 21<sup>12</sup>  
RNAV (GPS) Rwy 3  
RNAV (GPS) Rwy 21  
VOR Rwy 3

- NA when local weather not available.
- <sup>1</sup>NA when control tower closed.
- <sup>2</sup>LOC, Category E, 800-2¼.

**PORT ANGELES, WA**

PORT ANGELES  
CGAS (NOW).....COPTER RNAV (GPS) Rwy 26  
NA when local weather not available.

**WILLIAM R FAIRCHILD**

INTL (CLM).....RNAV (GPS) Rwy 9  
RNAV (GPS) Rwy 27  
Category D, 800-2¼.  
NA when local weather not available.

22 FEB 2024 to 21 MAR 2024

22 FEB 2024 to 21 MAR 2024

NAME ALTERNATE MINIMUMS

**PORT TOWNSEND, WA**

JEFFERSON COUNTY  
INTL (0S9).....RNAV (GPS)-A  
NA when local weather not available.  
Categories A, B, 900-2.

**PORTLAND, OR**

PORTLAND  
INTL (PDX).....ILS or LOC Rwy 10L<sup>1</sup>  
ILS or LOC Rwy 10R<sup>2</sup>  
ILS or LOC Rwy 28L<sup>3</sup>  
ILS or LOC Rwy 28R<sup>3</sup>  
LOC/DME Rwy 21<sup>4</sup>  
RNAV (GPS) Y Rwy 10L<sup>4</sup>  
RNAV (GPS) Y Rwy 10R<sup>4</sup>  
RNAV (GPS) X Rwy 28L<sup>4</sup>  
RNAV (GPS) X Rwy 28R<sup>4</sup>  
TACAN Rwy 28L<sup>5</sup>  
VOR-A<sup>6</sup>

- <sup>1</sup>LOC, Categories C, D, 1100-3; Category E, 1200-3.
- <sup>2</sup>LOC, Categories A, B, 900-2; Categories C, D, 1100-3; Category E, 1200-3.
- <sup>3</sup>ILS, Category A, 700-2; Category B, 800-2; Categories C, D, 1100-3; Category E, 1200-3.
- LOC, Categories C, D, 1100-3; Category E, 1200-3.
- <sup>4</sup>Categories C, D, 1100-3.
- <sup>5</sup>Categories C, D, 1100-3; Category E, 1200-3.
- <sup>6</sup>Categories A, B, 1000-2; Categories C, D, 1100-3.

PORTLAND-  
HILLSBORO (HIO).....ILS or LOC Rwy 13R<sup>12</sup>  
RNAV (GPS) Rwy 13R<sup>34</sup>  
RNAV (GPS) Rwy 31L<sup>34</sup>

- <sup>1</sup>NA when control tower closed.
- <sup>2</sup>LOC, Categories A, B, 1500-2; Categories C, D, 1500-3.
- <sup>3</sup>Category D, 800-2½.
- <sup>4</sup>NA when local weather not available.

PORTLAND-  
TROUTDALE (TTD).....RNAV (GPS)-A

Category A, 1000-2; Category B, 1100-2;  
Categories C, D, 1300-3.  
NA when local weather not available.

**PRINEVILLE, OR**

PRINEVILLE (S39).....RNAV (GPS) Rwy 11  
RNAV (GPS) Rwy 29  
NA when local weather not available.  
Category C, 800-2¼; Category D, 800-2½.

NAME ALTERNATE MINIMUMS

**PULLMAN/MOSCOW, WA**

PULLMAN/MOSCOW  
RNGL (PUW).....ILS or LOC Rwy 5<sup>1</sup>  
RNAV (GPS) Rwy 5<sup>2</sup>  
RNAV (GPS) Y Rwy 23  
VOR Rwy 5<sup>2</sup>

NA when local weather not available.  
<sup>1</sup>LOC, Category D, 900-2¾.  
<sup>2</sup>Category D, 900-2¾.

**RAWLINS, WY**

RAWLINS MUNI/HARVEY  
FLD (RWL).....RNAV (GPS) Rwy 22  
Category C, 900-2½; Category D, 1100-3.  
NA when local weather not available.

**REDMOND, OR**

ROBERTS  
FLD (RDM).....ILS or LOC Rwy 23<sup>13</sup>  
RNAV (GPS) Rwy 11<sup>1</sup>  
RNAV (GPS) Y Rwy 5<sup>1</sup>  
RNAV (GPS) Y Rwy 23<sup>2</sup>  
RNAV (GPS) Z Rwy 29<sup>1</sup>  
VOR-A<sup>12</sup>

<sup>1</sup>NA when local weather not available.  
<sup>2</sup>Category D, 800-2¼.  
<sup>3</sup>LOC, Category E, 800-2½.

**RENTON, WA**

RENTON  
MUNI (RNT).....RNAV (GPS) Y Rwy 16  
RNAV (GPS) Rwy 34<sup>1</sup>  
Categories A, B, 900-2; Category C, 1000-3.  
<sup>1</sup>NA when local weather not available.

**REXBURG, ID**

REXBURG-MADISON  
COUNTY (RXE).....RNAV (GPS) Rwy 35<sup>12</sup>  
VOR Rwy 35<sup>3</sup>

<sup>1</sup>NA when local weather not available.  
<sup>2</sup>Category C, 900-2½; Category D, 900-3.  
<sup>3</sup>Categories A, B, 900-2; Category C, 900-2½; Category D, 900-3.

**RIVERTON, WY**

CENTRAL WYOMING  
RGNL (RIW).....RNAV (GPS) Rwy 10  
RNAV (GPS) Rwy 28  
VOR Rwy 10  
VOR Rwy 28

NA when local weather not available.

**ROCK SPRINGS, WY**

SOUTHWEST WYOMING  
RGNL (RKS).....ILS or LOC Rwy 27<sup>1</sup>  
RNAV (GPS) Rwy 9<sup>2</sup>  
RNAV (GPS) Rwy 27<sup>2</sup>

<sup>1</sup>LOC, Category D, 800-2½.  
<sup>2</sup>Category D, 800-2½.

22 FEB 2024 to 21 MAR 2024

22 FEB 2024 to 21 MAR 2024

NAME ALTERNATE MINIMUMS

**ROSEBURG, OR**

ROSEBURG  
RGNL (RBG).....RNAV (GPS)-B  
NA when local weather not available.  
Categories A, B, 1200-2; Category C, 1500-3;  
Category D, 1600-3.

**SALEM, OR**

MCNARY FLD (SLE).....ILS or LOC Z Rwy 31<sup>12</sup>  
LOC BC Rwy 13<sup>313</sup>  
LOC Y Rwy 31<sup>13</sup>  
RNAV (GPS) Rwy 13<sup>3</sup>  
RNAV (GPS) Rwy 31<sup>14</sup>

- <sup>1</sup>NA when local weather not available.
- <sup>2</sup>LOC, Categories A, B, 900-2; Category C, 900-2½; Category D, 1100-3.
- <sup>3</sup>Category C, 900-2½; Category D, 1100-3.
- <sup>4</sup>Category C, 800-2¼; Category D, 1100-3.

**SANDPOINT, ID**

SANDPOINT (SZT).....RNAV (GPS)-B<sup>3</sup>  
RNAV (GPS) Y Rwy 20<sup>12</sup>  
RNAV (GPS) Z Rwy 20<sup>2</sup>

- <sup>1</sup>Categories A, B, 1300-2; Category C, 1300-3.
- <sup>2</sup>NA when local weather not available.
- <sup>3</sup>Categories A, B, 1500-2; Category C, 1500-3; Category D, 2100-3.

**SARATOGA, WY**

SHIVELY FLD (SAA).....RNAV (GPS) Rwy 5  
RNAV (GPS) Rwy 23  
NA when local weather not available.  
Category D, 900-2¼.

**SCAPPOOSE, OR**

SCAPPOOSE INDUSTRIAL  
AIRPARK (SPB).....LOC/DME Rwy 15  
RNAV (GPS) Rwy 15  
VOR/DME-A

NA when local weather not available.  
Category D, 900-2¼.

**SEATTLE, WA**

BOEING FLD/KING COUNTY  
INTL (BFI).....ILS or LOC Rwy 14R<sup>1</sup>  
ILS or LOC Rwy 32L<sup>1</sup>  
RNAV (GPS) Y Rwy 14R<sup>2</sup>  
RNAV (GPS) Y Rwy 32L<sup>3</sup>  
RNAV (RNP) Z Rwy 32L<sup>4</sup>

- <sup>1</sup>LOC, Category B, 900-2; Category C, 1000-2¼; Category D, 1000-3.
- <sup>2</sup>Category B, 900-2; Category C, 1000-2¼; Category D, 1000-3.
- <sup>3</sup>Categories A, B, 900-2½; Category C, 1000-2¼; Category D, 1000-3.
- <sup>4</sup>Categories A, B, C, D, 900-2½.

NAME ALTERNATE MINIMUMS

**SHELBY, MT**

SHELBY (SBX).....RNAV (GPS) Rwy 5  
RNAV (GPS) Rwy 23  
NA when local weather not available.  
Category D, 800-½.

**SHELTON, WA**

SANDERSON  
FLD (SHN).....RNAV (GPS) Rwy 5  
RNAV (GPS) Rwy 23  
NA when local weather not available.  
Category D, 1000-3.

**SHERIDAN, WY**

SHERIDAN  
COUNTY (SHR).....ILS or LOC/DME Rwy 33<sup>1</sup>  
RNAV (GPS) Rwy 15<sup>2</sup>  
RNAV (GPS) Rwy 33<sup>2</sup>  
VOR Rwy 15<sup>2</sup>

- <sup>1</sup>ILS, Category B, 700-2; Category C, 900-2½; Category D, 1200-3; LOC, Category C, 900-2 ½; Category D, 1200-3.
- <sup>2</sup>Category C, 900-2 ½; Category D, 1200-3.

**SIDNEY, MT**

SIDNEY-RICHLAND  
RGNL (SDY).....RNAV (GPS) Rwy 1  
RNAV (GPS) Rwy 19<sup>1</sup>  
Category D, 900-2¼.  
<sup>1</sup>NA when local weather not available.

**SPOKANE, WA**

FELTS FLD (SFF).....ILS or LOC Rwy 22R<sup>1</sup>  
RNAV (GPS) Rwy 4L<sup>2</sup>  
VOR Rwy 4L<sup>3</sup>

- NA when local weather not available.
- <sup>1</sup>LOC, Categories A, B, 900-2; Category C, 1200-3.
- <sup>2</sup>Categories A, B, 900-2½; Category C, 1200-3; Category D, 1500-3.
- <sup>3</sup>Categories A, B, 1100-2; Categories C, 1200-3; Category D, 1500-3.

SPOKANE INTL (GEG).....ILS or LOC Rwy 3<sup>1</sup>  
ILS or LOC Rwy 21<sup>1</sup>  
RNAV (GPS) Y Rwy 3<sup>2</sup>  
RNAV (GPS) Y Rwy 8<sup>2</sup>  
RNAV (GPS) Y Rwy 21<sup>2</sup>  
RNAV (GPS) Y Rwy 26<sup>2</sup>  
VOR Rwy 3<sup>3</sup>  
VOR Rwy 21<sup>4</sup>

- <sup>1</sup>LOC, Category C, 800-2¼; Category D, 1000-3.
- <sup>2</sup>Category C, 1000-2¼; Category D, 1100-3.
- <sup>3</sup>Category C, 800-2¼; Categories D, E, 1100-3.
- <sup>4</sup>Category C, 800-2¼; Category D, 1000-3.

**SUNRIVER, OR**

SUNRIVER (S21).....RNAV (GPS) Rwy 18  
Category B, 1000-2; Categories C, D, 1500-3.  
NA when local weather not available.

22 FEB 2024 to 21 MAR 2024

22 FEB 2024 to 21 MAR 2024

NAME ALTERNATE MINIMUMS

**TACOMA, WA**

TACOMA  
NARROWS (TIW).....**ILS or LOC Rwy 17<sup>1</sup>**  
**RNAV (GPS) Rwy 17<sup>12</sup>**  
**RNAV (GPS) Rwy 35<sup>23</sup>**

- <sup>1</sup>NA when control tower closed.
- <sup>2</sup>Category D, 800-2¼.
- <sup>3</sup>NA when local weather not available.

**THERMOPOLIS, WY**

HOT SPRINGS  
COUNTY (HSG).....**RNAV (GPS) RWY 5**  
**RNAV (GPS) RWY 23**  
  
Category D, 1000-3.

**THE DALLES, OR**

COLUMBIA GEORGE RGNL/  
THE DALLES MUNI (DLS).....**RNAV (GPS)-A**  
NA when local weather not available.  
Categories A, B, 1100-2; Category C, 1500-3;  
Category D, 1900-3.

**TORRINGTON, WY**

TORRINGTON MUNI (TOR).....**NDB Rwy 10<sup>1</sup>**  
**NDB Rwy 28<sup>2</sup>**  
**RNAV (GPS) Rwy 10<sup>3</sup>**  
**RNAV (GPS) Rwy 28<sup>3</sup>**

- NA when local weather not available.
- <sup>1</sup>Categories A, B, 900-2; Category C, 900-2½;
- Category D, 900-2¾.
- <sup>2</sup>Category D, 800-2¼.
- <sup>3</sup>Category D, 800-2½.

**TWIN BRIDGES, MT**

RUBY VALLEY  
FLD (RVF).....**RNAV (GPS) Rwy 17**  
**RNAV (GPS) Rwy 35**  
  
NA when local weather not available.  
Category D, 800-2¼.

**TWIN FALLS, ID**

JOSLIN FLD/MAGIC VALLEY  
RGNL (TWF).....**ILS or LOC Rwy 26<sup>12</sup>**  
**RNAV (GPS) Rwy 8<sup>3</sup>**  
**RNAV (GPS) Rwy 26<sup>4</sup>**  
**VOR Rwy 8<sup>5</sup>**  
**VOR Rwy 26**  
**VOR/DME Rwy 8<sup>3</sup>**

- NA when local weather not available.
- <sup>1</sup>NA when control tower closed.
- <sup>2</sup>LOC, Category C, 1000-2¾; Categories D, E, 1000-3.
- <sup>3</sup>Category C, 1000-2¾; Category D, 1000-3.
- <sup>4</sup>Categories C, D, 1100-3.
- <sup>5</sup>Categories A, B, 1000-2; Category C, 1000-2¾; Categories D, 1000-3.

NAME ALTERNATE MINIMUMS

**VANCOUVER, WA**

PEARSON FLD (VUO).....**RNAV (GPS)-B**  
NA when local weather not available.

**WALLA WALLA, WA**

WALLA WALLA  
RGNL (ALW).....**ILS or LOC Rwy 20<sup>12</sup>**  
**RNAV (GPS) Rwy 2<sup>3</sup>**  
**RNAV (GPS) Rwy 20<sup>4</sup>**  
**VOR Rwy 2<sup>3</sup>**

- NA when local weather not available.
- <sup>1</sup>NA when control tower closed.
- <sup>2</sup>LOC, Category C, 1000-2¾;
- Category D, 1200-3.
- <sup>3</sup>Category C, 1000-2¾; Category D, 1200-3.
- <sup>4</sup>Categories A, B, 1000-2; Category C, 1000-3; Category D, 1200-3.

**WENATCHEE, WA**

PANGBORN  
MEML (EAT).....**ILS Y Rwy 12, 1300-4**  
**ILS Z Rwy 12<sup>1</sup>**  
**RNAV (RNP) Rwy 12, 1200-5**  
**VOR-A<sup>2</sup>**  
**VOR-B<sup>3</sup>**

- <sup>1</sup>NA when local weather not available.
- <sup>2</sup>Categories A, B, 2000-2; Category C, 2000-3; Category D, 2700-3.
- <sup>3</sup>Categories A, B, 1500-2; Category C, 2000-3; Category D, 2700-3.

**WHEATLAND, WY**

PHIFER  
AIRFIELD (EAN).....**RNAV (GPS) Rwy 26**  
NA when local weather not available.

**WILBUR, WA**

WILBUR INTL (2S8).....**RNAV (GPS)-A**  
Categories A, B, 900-2.

**WOLF POINT, MT**

L.M. CLAYTON (OLF).....**RNAV (GPS) Rwy 11**  
**RNAV (GPS) Rwy 29**  
  
NA when local weather not available.  
Category D, 800-2½.

**WORLAND, WY**

WORLAND  
MUNI (WRL).....**RNAV (GPS) Rwy 16<sup>1</sup>**  
**RNAV (GPS) Rwy 34<sup>1</sup>**  
**VOR Rwy 16<sup>2</sup>**

- NA when local weather not available.
- <sup>1</sup>Category D, 800-2½.
- <sup>2</sup>Categories A, B, 900-2;
- Categories C, D, 900-2½.

22 FEB 2024 to 21 MAR 2024

22 FEB 2024 to 21 MAR 2024

