

LOC I-OCF 111.5	APP CRS 004°	Rwy Idg 6347
		TDZE 80
		Apt Elev 90

ILS or LOC RWY 36

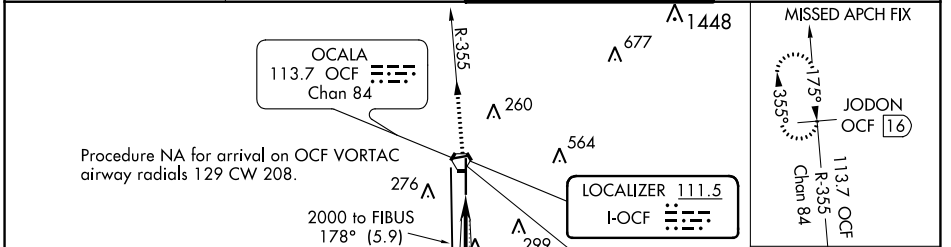
OCALA INTL-JIM TAYLOR FLD (OCF)

DME required.

MALSR

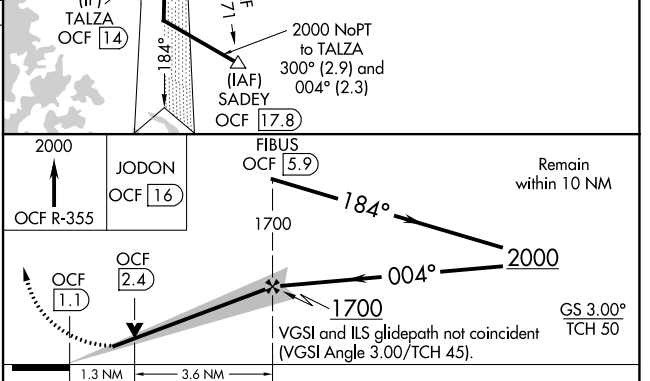
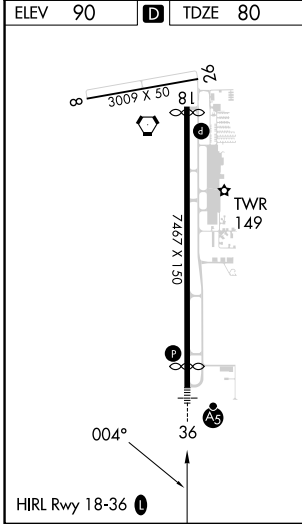
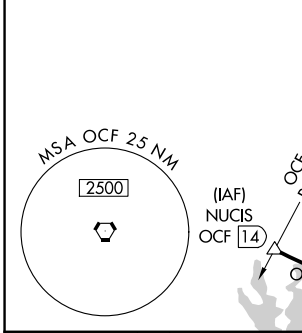
MISSED APPROACH: Climb to 2000 on OCF VORTAC R-355 to JODON/OCF VORTAC 16 DME and hold.

ATIS 128.125	JACKSONVILLE APP CON 118.6 251.15	OCALA TOWER ★ 119.25 (CTAF)	GND CON 121.4
------------------------	---	---------------------------------------	-------------------------



SE-3, 22 FEB 2024 to 21 MAR 2024

SE-3, 22 FEB 2024 to 21 MAR 2024



CATEGORY	A	B	C	D
S-ILS 36		280- ³ / ₄	200 (200- ³ / ₄)	
S-LOC 36	540- ³ / ₄	460 (500- ³ / ₄)	540- ⁷ / ₈	460 (500- ⁷ / ₈)
CIRCLING	600-1	510 (600-1)	760- ¹ / ₄ 670 (700- ¹ / ₄)	920- ³ / ₄ 830 (900- ³ / ₄)

WAAS CH 90319 W18A	APP CRS 184°	Rwy Idg TDZE Apt Elev	6557 80 90
--	------------------------	-----------------------------	---------------------------------------

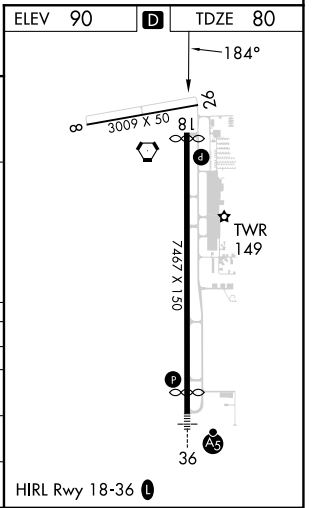
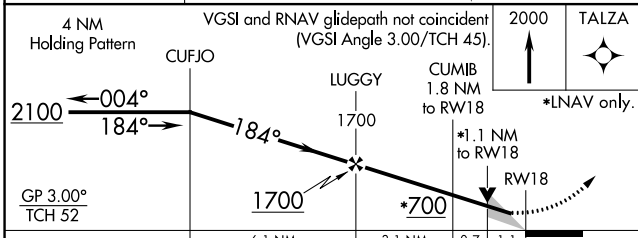
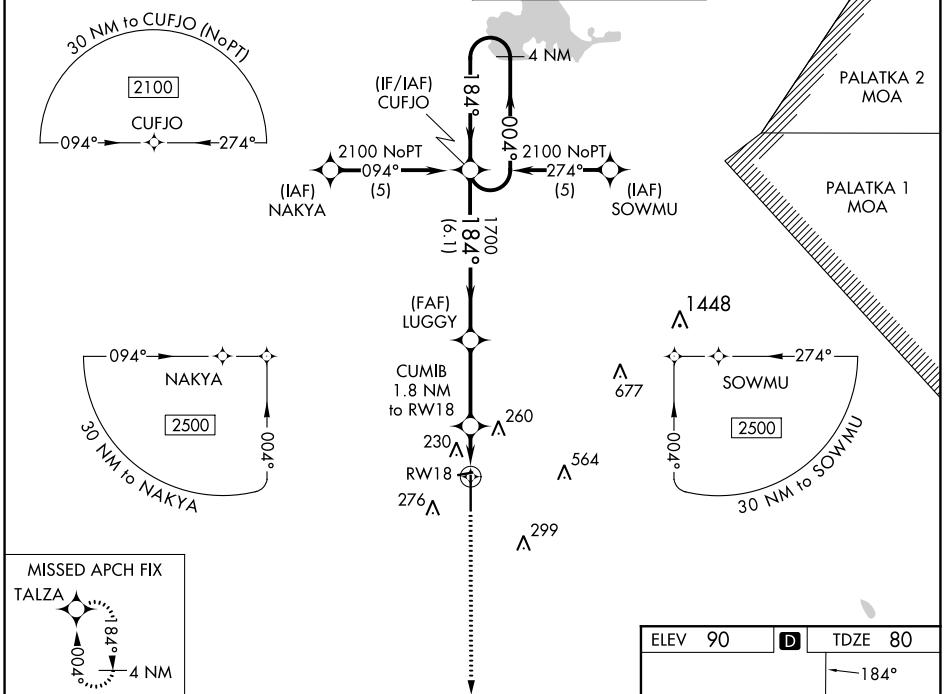
RNAV (GPS) RWY 18

OCALA INTL-JIM TAYLOR FLD (OCF)

⚠ For uncompensated Baro-VNAV systems, LNAV/VNAV NA below -15°C (5°F) or above 48°C (118°F). DME/DME RNP-0.3 NA. When local altimeter setting not received, use Gainesville altimeter setting and increase LPV DA to 361 feet, increase LNAV/VNAV DA to 595 feet and all MDA 100 feet; increase LPV and LNAV/VNAV all Cats and LNAV Cats C/D visibility ¼ SM; increase Circling Cat C visibility ½ SM, Cat D ¼ SM. Baro-VNAV and VDP NA when using Gainesville altimeter setting.

MISSED APPROACH:
Climb to 2000 direct TALZA and hold.

ATIS 128.125	JACKSONVILLE APP CON 118.6 251.15	OCALA TOWER ★ 119.25 (CTAF) 0	GND CON 121.4
------------------------	---	---	-------------------------



CATEGORY	A	B	C	D
LPV DA		280-¾	200 (200-¾)	
LNAV/VNAV DA		514-1½	434 (500-1½)	
LNAV MDA	480-1	400 (400-1)		480-1¼ 400 (400-1¼)
CIRCLING	600-1	510 (600-1)	760-1¾ 670 (700-1¾)	920-2¾ 830 (900-2¾)

SE-3, 22 FEB 2024 to 21 MAR 2024

SE-3, 22 FEB 2024 to 21 MAR 2024

WAAS CH 58110 W36A	APP CRS 004°	Rwy Idg TDZE Apt Elev	6347 80 90
--	------------------------	-----------------------------	---------------------------------------

RNAV (GPS) RWY 36

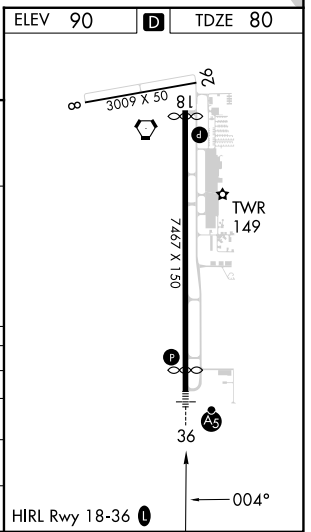
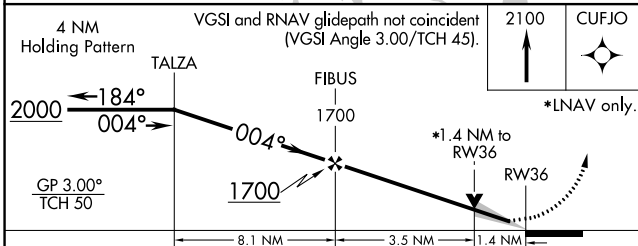
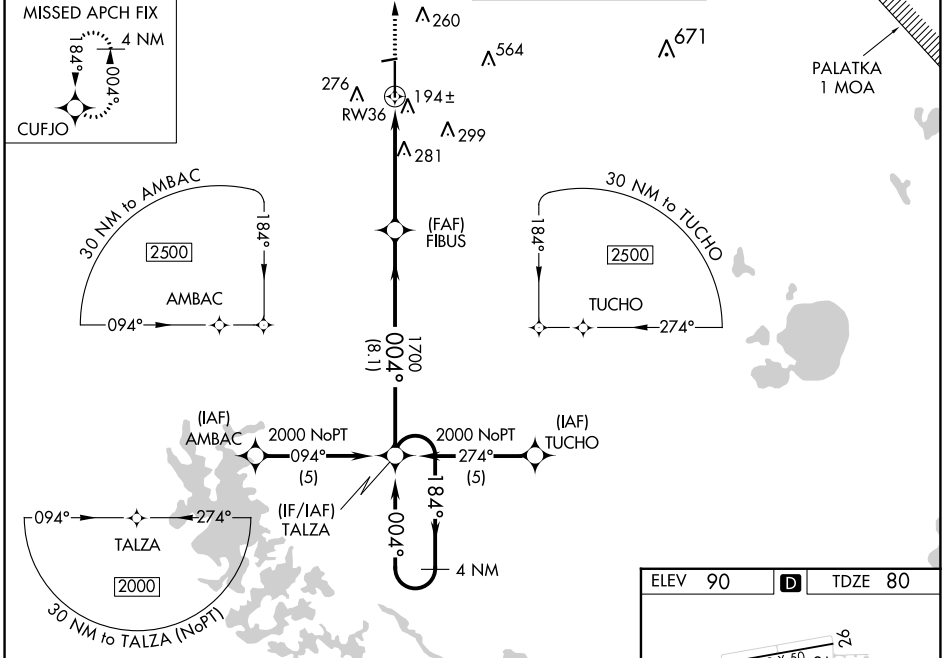
OCALA INTL-JIM TAYLOR FLD (OCF)

⚠ For uncompensated Baro-VNAV systems, LNAV/VNAV NA below -15°C (5°F) or above 48°C (118°F). DME/DME RNP-0.3 NA. When local altimeter setting not received, use Gainesville altimeter setting: Increase LPV DA to 361 feet, increase LNAV/VNAV DA to 644 feet and all MDAs 100 feet; increase LNAV/VNAV all Cats and LNAV visibility Cats C/D ¼ SM, increase Circling visibility Cat C ½ SM and Cat D ¼ SM. VDP and Baro-VNAV NA when using Gainesville altimeter setting. Inop table does not apply to LPV when using local altimeter setting. For inop MALSRS, increase LNAV Cats A and B visibility to 1 mile. For inop MALSRS when using Gainesville altimeter setting, increase LNAV Cats A and B visibility to 1 mile.

MALSRS

MISSED APPROACH:
Climb to 2100 direct CUFJO and hold.

ATIS 128.125	JACKSONVILLE APP CON 118.6 251.15	OCALA TOWER * 119.25 (CTAF) 0	GND CON 121.4
-------------------------------	--	--	--------------------------------



CATEGORY	A	B	C	D
LPV DA	280-¾		200 (200-¾)	
LNAV/VNAV DA	563-1¼		483 (500-1¼)	
LNAV MDA	540-¾		460 (500-¾)	
			540-1	
			460 (500-1)	
CIRCLING	600-1 510 (600-1)		760-1¾ 670 (700-1¾)	
			920-2¾ 830 (900-2¾)	

SE-3, 22 FEB 2024 to 21 MAR 2024

SE-3, 22 FEB 2024 to 21 MAR 2024

OCALA, FLORIDA

AL-5055 (FAA)

23166

VORTAC OCF 113.7 Chan 84	APP CRS 354°	Rwy Idg 6347 TDZE 80 Apt Elev 90
--	------------------------	---

VOR RWY 36

OCALA INTL-JIM TAYLOR FLD (OCF)

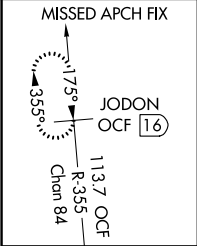
DME required.

For inop ALS, increase S-36 Cats A/B visibility to 1 SM.

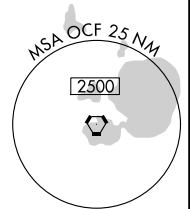
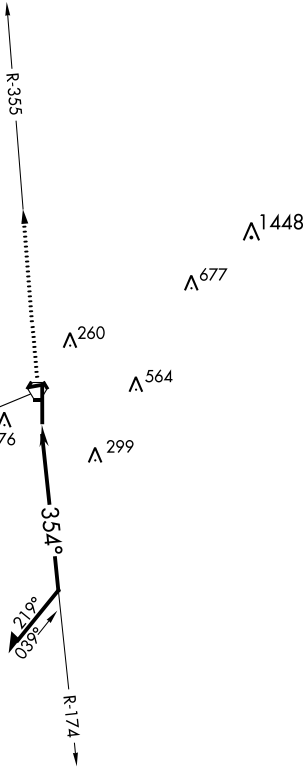
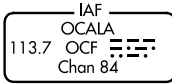


MISSED APPROACH: Climb to 2000 on OCF VORTAC R-355 to JODON/OCF VORTAC 16 DME and hold.

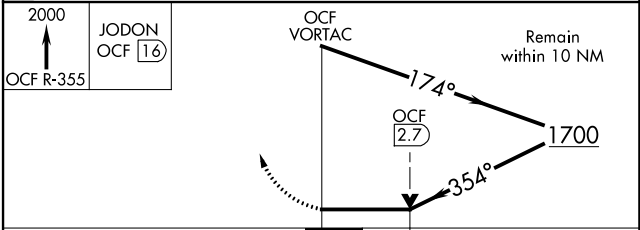
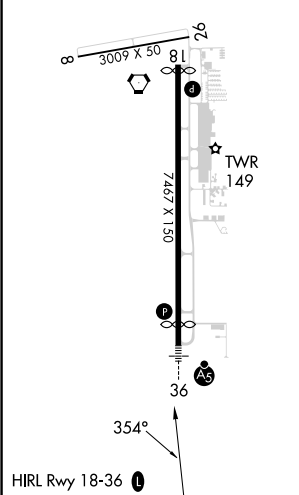
ATIS 128.125	JACKSONVILLE APP CON 118.6 251.15	OCALA TOWER ★ 119.25 (CTAF) 0	GND CON 121.4
------------------------	---	---	-------------------------



Procedure NA for arrival on OCF VORTAC
airway radials 129 CW 208.



ELEV 90	D	TDZE 80
---------	----------	---------



CATEGORY	A	B	C	D
S-36	640-3/4	560 (600-3/4)	640-1 1/8	560 (600-1 1/8)
CIRCLING	640-1	550 (600-1)	760-1 3/4 670 (700-1 3/4)	920-2 3/4 830 (900-2 3/4)

OCALA, FLORIDA
Amdt 19 23FEB23

29°10'N-82°13'W

OCALA INTL-JIM TAYLOR FLD (OCF)
VOR RWY 36

SE-3, 22 FEB 2024 to 21 MAR 2024

SE-3, 22 FEB 2024 to 21 MAR 2024