

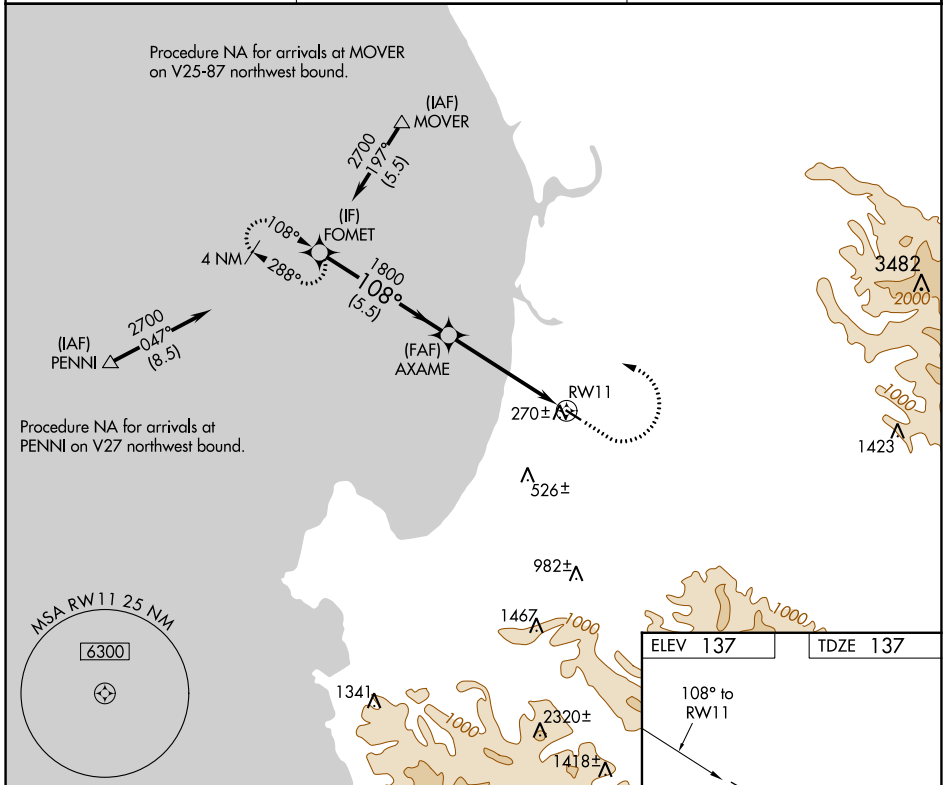
APP CRS	Rwy ldg	3483
108°	TDZE	137
	Apt Elev	137

RNAV (GPS) RWY 11

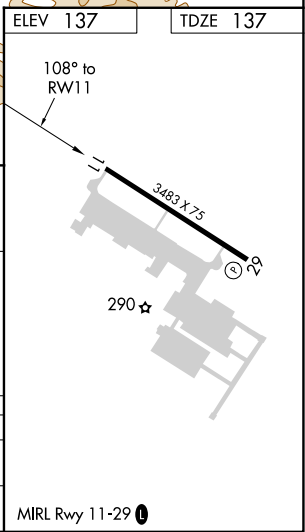
MARINA MUNI (OAR)

RNP APCH.	MISSED APPROACH: Climb to 600, then climbing left turn to 2700 direct FOMET and hold, continue climb-in-hold to 2700.
Rwy 11 helicopter visibility reduction below 3/4 SM NA.	

AWOS-3PT 134.025	NORCAL APP CON 133.0 251.15	UNICOM 122.7 (CTAF) 0
----------------------------	---------------------------------------	---------------------------------



FOMET	600	2700	FOMET
2700	↑	↶	✧
108°			
AXAME			
1800	3.04° TCH 40	1.1 NM to RWY 11	
5.5 NM	3.9 NM	1.1 NM	
CATEGORY	A	B	C
LNVA MDA	520-1	383 (400-1)	NA
CIRCLING	640-1 503 (600-1)	760-1 623 (700-1)	NA



SW-2, 22 FEB 2024 to 21 MAR 2024

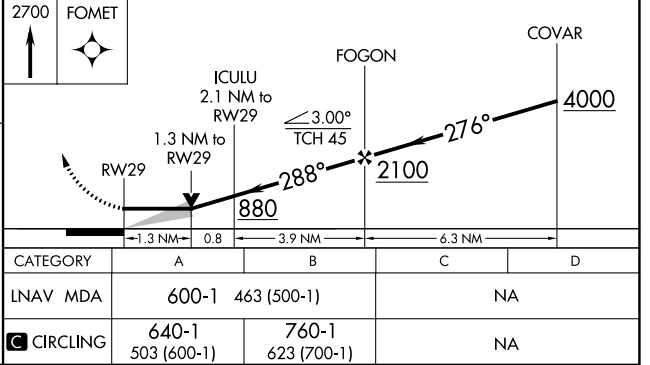
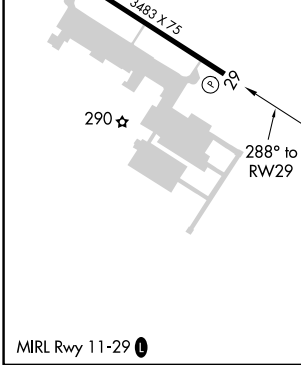
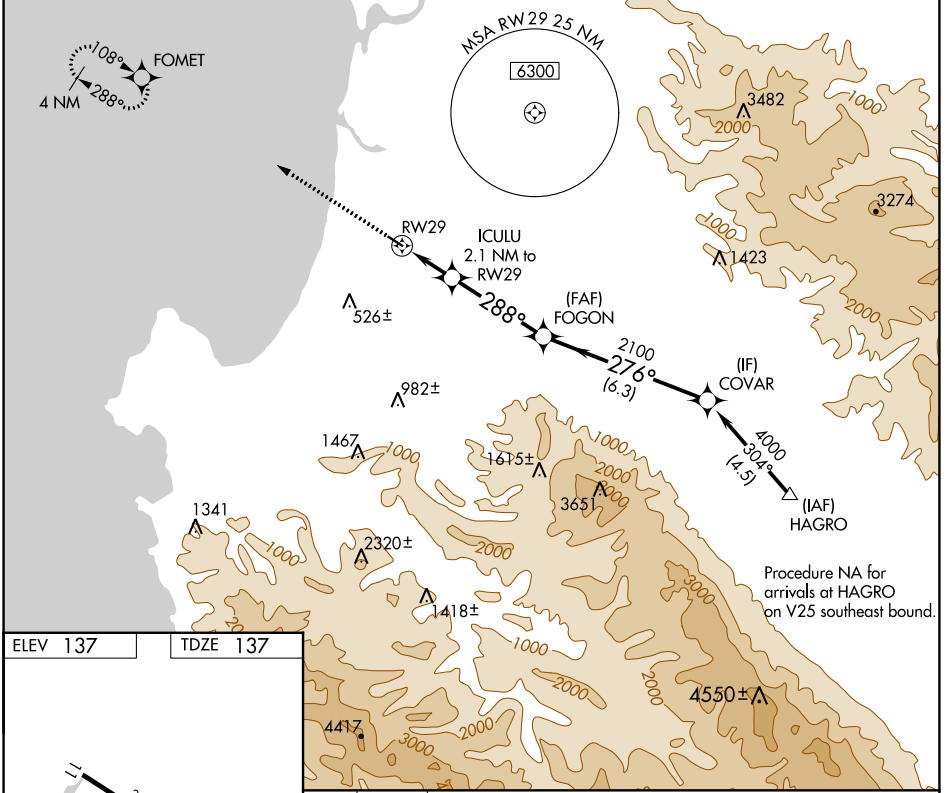
SW-2, 22 FEB 2024 to 21 MAR 2024

APP CRS	Rwy Idg	3483
288°	TDZE	137
	Apt Elev	137

RNAV (GPS) RWY 29

MARINA MUNI (OAR)

RNP APCH.		MISSED APPROACH: Climb to 2700 direct FOMET and hold, continue climb-in-hold to 2700.
NA		
AWOS-3PT 134.025	NORCAL APP CON 133.0 251.15	UNICOM 122.7 (CTAF) 0



SW-2, 22 FEB 2024 to 21 MAR 2024

SW-2, 22 FEB 2024 to 21 MAR 2024