

(HOOKS2.HOOKS) 17341

# HOOKS TWO DEPARTURE

AL-410 (FAA)

MOFFETT FEDERAL AFLD (NUQ)  
MOUNTAIN VIEW, CALIFORNIA

**TOP ALTITUDE:  
ASSIGNED BY ATC**

ATIS  
124.175 283.0  
CLNC DEL  
296.75  
GND CON  
121.85 278.95  
MOFFETT TOWER\*  
119.55 (CTAF) 259.65  
NORCAL DEP CON  
120.1 290.25

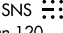
MOFFETT  
Chan 123  
NUQ   
(117.6)



HOOKS  
N37°07.43'  
W121°53.91'  
6000

6000  
\*4900  
136°  
(31)



SALINAS  
117.3 SNS   
Chan 120  
N36°39.83' W121°36.19'  
L-3, H-3

NOTE: TACAN required.

### TAKEOFF MINIMUMS

Rwy 14R/L: Standard with the following minimum climb gradients:

Rwy 14R: Obstacle climb of 314' per NM to 4900, ATC climb of 332' per NM to 6000.

Rwy 14L: Obstacle climb of 314' per NM to 4900, ATC climb of 328' per NM to 6000.

Rwy 32R/L: NA, ATC.

NOTE: Chart not to scale.



### DEPARTURE ROUTE DESCRIPTION

TAKEOFF RUNWAYS 14L/R: Climb via NUQ R-141 to cross HOOKS/NUQ 20 DME at 6000, thence . . . .

. . . . via (transition).

VALLEY TRANSITION (HOOKS2.SNS): From over HOOKS DME on SNS R-316 to SNS VORTAC.

# HOOKS TWO DEPARTURE

(HOOKS2.HOOKS) 15SEP16

MOUNTAIN VIEW, CALIFORNIA  
MOFFETT FEDERAL AFLD (NUQ)

SW-2, 28 JAN 2021 to 25 FEB 2021

SW-2, 28 JAN 2021 to 25 FEB 2021

# SOUTHLAND THREE DEPARTURE

AL-410 (FAA)

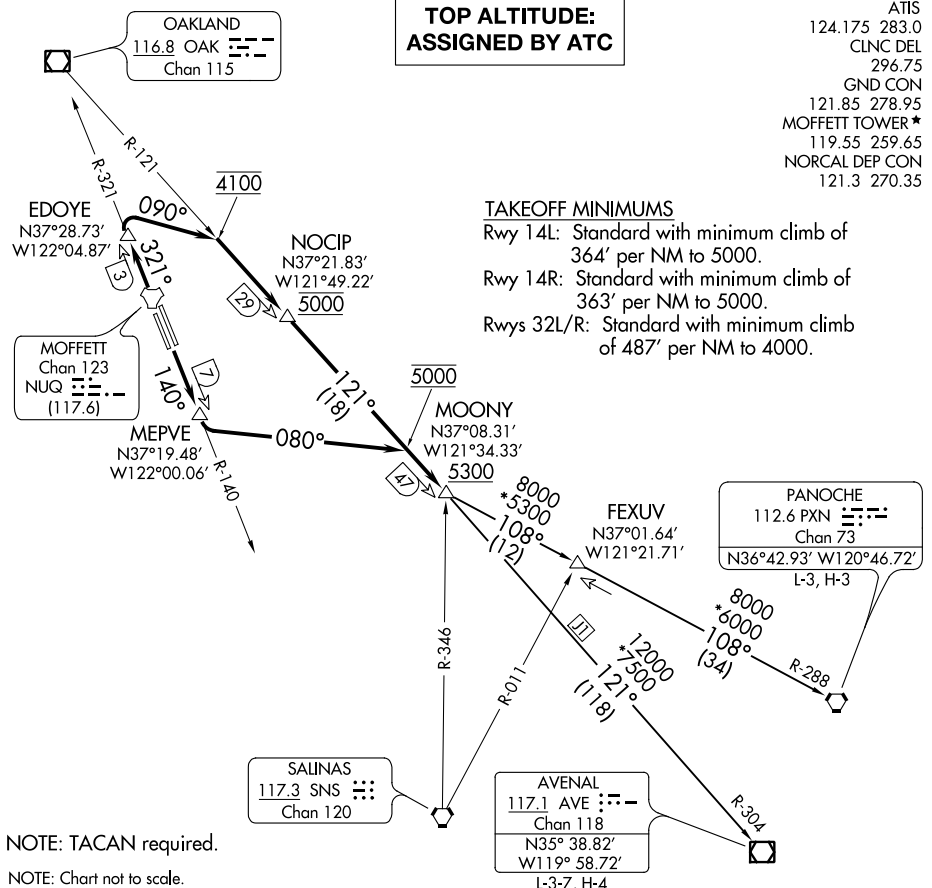
MOFFETT FEDERAL AFLD (NUQ)  
MOUNTAIN VIEW, CALIFORNIA

**TOP ALTITUDE:  
ASSIGNED BY ATC**

ATIS	124.175	283.0	
CLNC DEL		296.75	
GND CON		121.85	278.95
MOFFETT TOWER *	119.55	259.65	
NORCAL DEP CON	121.3	270.35	

### TAKEOFF MINIMUMS

Rwy 14L: Standard with minimum climb of 364' per NM to 5000.  
 Rwy 14R: Standard with minimum climb of 363' per NM to 5000.  
 Rwys 32L/R: Standard with minimum climb of 487' per NM to 4000.



SW-2, 28 JAN 2021 to 25 FEB 2021

SW-2, 28 JAN 2021 to 25 FEB 2021

NOTE: TACAN required.  
 NOTE: Chart not to scale.

### DEPARTURE ROUTE DESCRIPTION

**TAKEOFF RUNWAYS 14L/R:** Climb on NUQ R-140 to MEPVE/NUQ 7 DME, then climbing left turn on heading 080° to intercept OAK R-121 at 5000, then on OAK R-121 to cross MOONY INT at or above 5300, thence . . . .

**TAKEOFF RUNWAYS 32L/R:** Climb on NUQ R-321 to EDOYE/NUQ 3 DME, then climbing right turn on heading 090° to intercept OAK R-121 at 4100, then on OAK R-121 to cross NOCIP/OAK 29 DME at 5000, then on OAK R-121 to cross MOONY INT at or above 5300, thence . . . .

. . . . on (transition), maintain ATC assigned altitude.

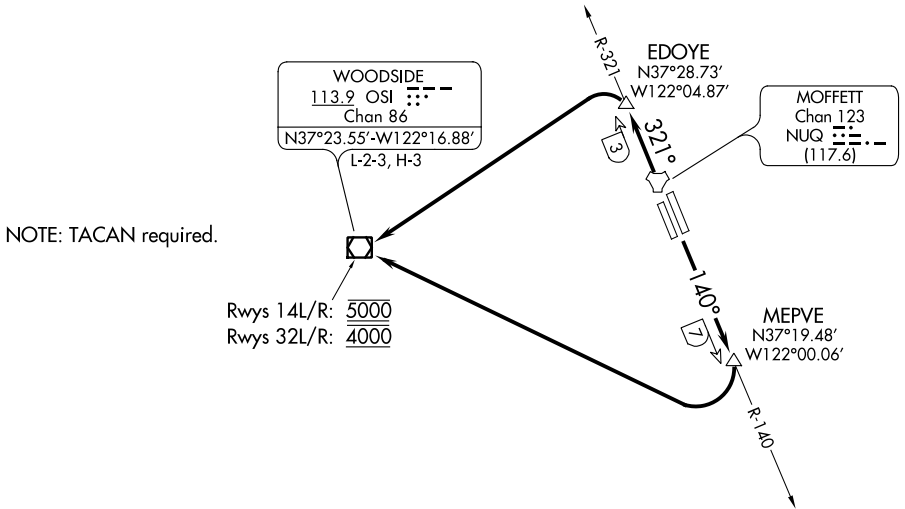
**AVENAL TRANSITION (SOLN3.AVE):** From over MOONY INT on OAK R-121 and AVE R-304 to AVE VOR/DME.

**PANOCHE TRANSITION (SOLN3.PXN):** From over MOONY INT on PXN R-288 to PXN VORTAC.

# SOUTHLAND THREE DEPARTURE

ATIS  
124.175 283.0  
CLNC DEL  
296.75  
GND CON  
121.85 278.95  
MOFFETT TOWER★  
119.55 (CTAF) 259.65  
NORCAL DEP CON  
121.3 270.35

**TOP ALTITUDE:  
ASSIGNED BY ATC**



### TAKEOFF MINIMUMS

Rwys 14L/R: Standard with minimum climb of 402' per NM to 5000.  
Rwy 32R: Standard with minimum climb of 250' per NM to 4000.  
Rwy 32L: Standard with minimum climb of 246' per NM to 4000.

NOTE: Chart not to scale.



### DEPARTURE ROUTE DESCRIPTION

TAKEOFF RUNWAYS 14L/R: Climb via NUQ R-140 to MEPVE/NUQ 7 DME, then right turn direct to cross OSI VOR/DME at 5000, thence . . . .

TAKEOFF RUNWAYS 32L/R: Climb via NUQ R-321 to EDOYE/NUQ 3 DME, then turn left direct to cross OSI VOR/DME at 4000, thence . . . .

. . . . via RADAR vectors or assigned route.