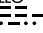

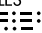


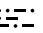
# TERKS TWO ARRIVAL

NORFOLK APP CON  
 118.9 353.7  
 NGU ATIS  
 118.425 342.0  
 NTU ATIS ★  
 317.6  
 ORF ATIS  
 127.15

MONTEBELLO  
 115.3 MOL   
 Chan 100  
 N37°54.03'·W79°06.41'

HARCUM  
 108.8 HCM   
 Chan 25  
 N37°26.92'·W76°42.68'

CAPE CHARLES  
 112.2 CCV   
 Chan 59  
 N37°20.85'·W75°59.86'

FLAT ROCK  
 113.3 FAK   
 Chan 80  
 N37°31.71'·W77°49.69'

TURBOJET VERTICAL NAVIGATION PLANNING INFORMATION

Expect clearance to cross at 14,000'.

RUSSL  
 N37°29.82'·W77°22.14'

TURBOJET VERTICAL NAVIGATION PLANNING INFORMATION

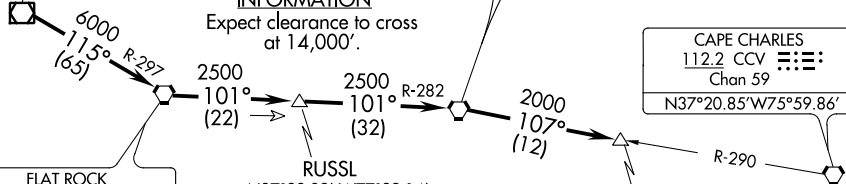
Expect clearance to cross at 16,000'.

TURBOJET VERTICAL NAVIGATION PLANNING INFORMATION

Expect clearance to cross 20 NM west at FL 210.

NOTE: For aircraft at or above 14,000' only.

NOTE: Chart not to scale.



NE-3, 09 SEP 2021 to 07 OCT 2021

NE-3, 09 SEP 2021 to 07 OCT 2021

From over MOL VOR/DME via R-115 and FAK R-297 to FAK VORTAC, then via FAK R-101 and HCM R-282 to HCM VORTAC, then via HCM R-107 and CCV R-290 to TERKS INT. Expect radar vectors to the final approach course after the TERKS INT.

# TERKS TWO ARRIVAL