



**WYNNNS-THREE DEPARTURE (WYNNNS3•WYNNNS)**

OCEANA NAS (APOLLO SOURCE FIELD) (KNTU)  
VIRGINIA BEACH, VIRGINIA

ATIS 317.6  
CLNC DEL  
254.4  
GND CON 119.6 336.4  
OCEANA TOWER 127.075 360.2  
OCEANA DEP CON 123.9 266.8

SH-934 [USN]

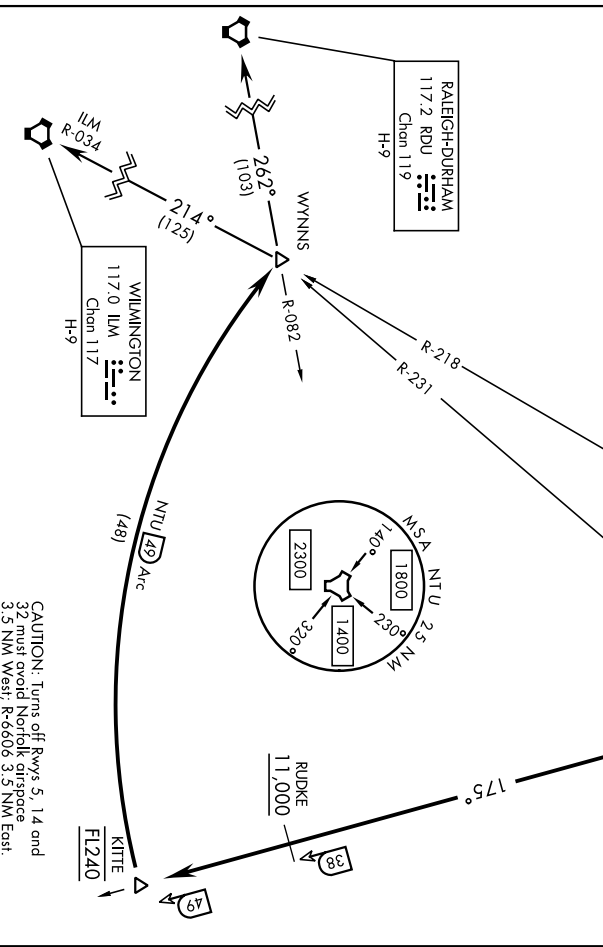
NORFOLK  
116.9 ORF  
Chen 116

OCEANA  
Chen 113 NTU

Rwy	Knots	120	180	240	300	360
All	V/V(fpm)	1000	1500	2000	2500	3000

ATC Minimum Climb Rate to FL240

**NTU TACAN REQUIRED**



**DEPARTURE ROUTE DESCRIPTION**

**TAKE-OFF RMY 5L/R or 14L/R:** Climbing right turn to intercept NTU TACAN R-175 to CANOB. Thence...  
Thence...

**TAKE-OFF RMY 23L/R:** Climbing left turn to intercept NTU TACAN R-175 to CANOB. Thence...

**TAKE-OFF RMY 32L/R:** Climbing left turn within NTU TACAN 2 DME to intercept NTU R-175. Thence...

... Via NTU R-175 to KITTE, arc south of NTU via the 49 mile arc to WYNNNS. Cross RUDKE at or above 11,000. Cross KITTE at FL240, or as assigned. Thence...

**RALEIGH-DURHAM TRANSITION (WYNNNS3-RDU):** Via RDU VORTAC R-082 to RDU.

**WILMINGTON TRANSITION (WYNNNS3-ILM):** Via ILM VORTAC R-034 to ILM.

**WYNNNS-THREE DEPARTURE (WYNNNS3•WYNNNS)**

VIRGINIA BEACH, VIRGINIA  
OCEANA NAS (APOLLO SOURCE FIELD) (KNTU)