

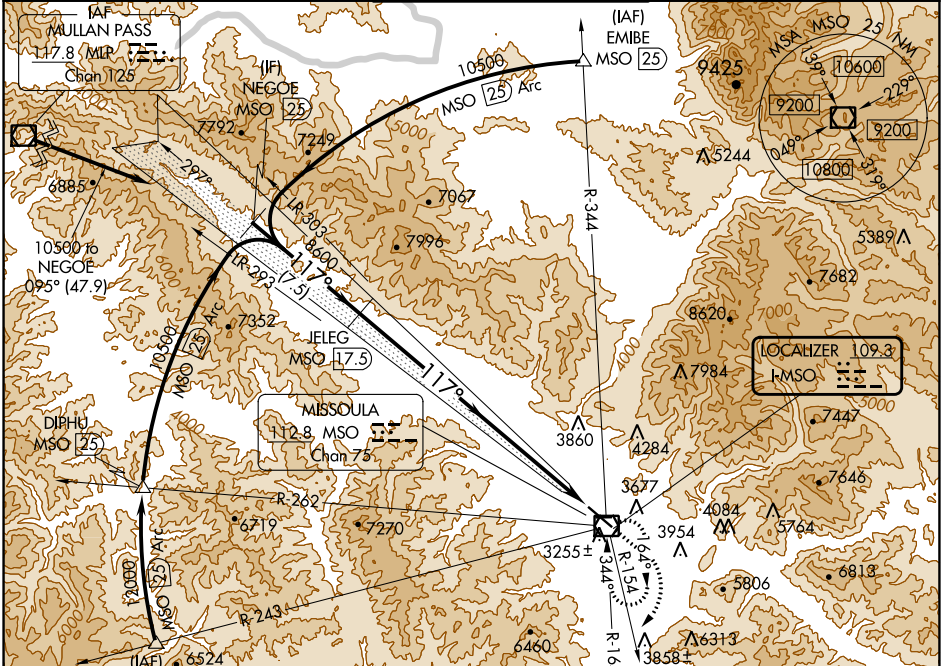
LOC I-MSO <b>109.3</b>	APP CRS <b>117°</b>	Rwy ldg TDZE Apt Elev <b>9501</b> <b>3200</b> <b>3206</b>
---------------------------	------------------------	--

# ILS Y RWY 12

MISSOULA MONTANA (MISO)

DME required.		MALSRL	MISSED APPROACH: Climb to 6200 then climbing right turn to 8500 on MSO VOR/DME R-154 then climbing left turn to 9100 direct MSO VOR/DME and hold.
NA	Inoperative table does not apply.	AS	
-12°C			

ATIS <b>126.65</b>	SPOKANE APP CON * <b>124.9 298.95</b>	MISSOULA TOWER * <b>118.4 (CTAF) 377.175</b>	GND CON <b>121.9</b>	UNICOM <b>122.95</b>
-----------------------	--	---	-------------------------	-------------------------



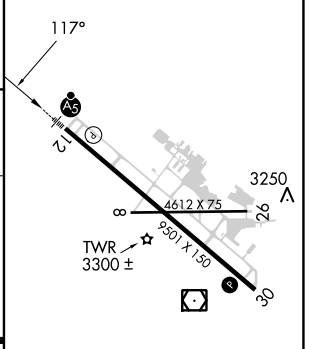
NW-1, 22 FEB 2024 to 21 MAR 2024

NW-1, 22 FEB 2024 to 21 MAR 2024

ELEV 3206	TDZE 3200
-----------	-----------



NEGOE MSO [25]	JELEG MSO [17.5]	6200	8500	9100	MSO
VGS and ILS glidepath not coincident (VGS Angle 3.00/TCH 55).					
GS 3.00° TCH 45					
7.5 NM		16.1 NM			



CATEGORY	A	B	C	D	REIL Rwy 30
S-ILS 12		5022-7	1822 (1900-7)		MIRL Rwy 8-26 HIRL Rwy 12-30

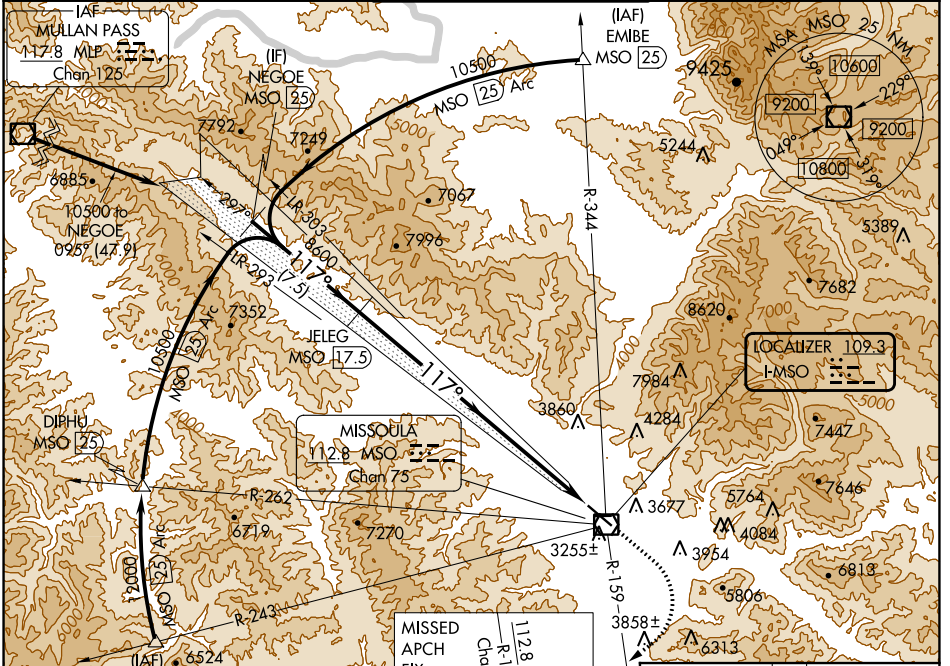
LOC I-MSO <b>109.3</b>	APP CRS <b>117°</b>	Rwy ldg TDZE Apt Elev	<b>9501</b> <b>3200</b> <b>3206</b>
---------------------------	------------------------	-----------------------------	---

# ILS Z RWY 12

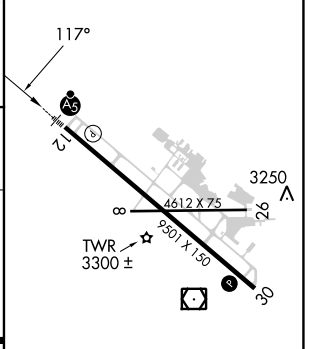
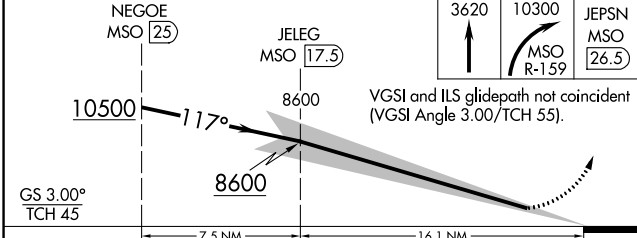
MISSOULA MONTANA (MISO)

DME required.	MALSRR 	MISSED APPROACH: Climb to 3620 then climbing right turn to 10300 on MSO VOR/DME R-159 to JEPSN/MISO 26.5 DME and hold. Missed approach requires minimum climb of 410 feet per NM to 9800; if unable to meet climb gradient, see ILS Y RWY 12.
-12°C		

ATIS <b>126.65</b>	SPOKANE APP CON * <b>124.9 298.95</b>	MISSOULA TOWER * <b>118.4 (CTAF) 377.175</b>	GND CON <b>121.9</b>	UNICOM <b>122.95</b>
-----------------------	--	---	-------------------------	-------------------------



ELEV 3206		TDZE 3200
-----------	--	-----------



CATEGORY	A	B	C	D
S-ILS 12		3411/24	211 (300-1/2)	

NW-1, 22 FEB 2024 to 21 MAR 2024

NW-1, 22 FEB 2024 to 21 MAR 2024

APP CRS <b>339°</b>	Rwy Idg TDZE Apt Elev	<b>N/A</b> <b>N/A</b> <b>3206</b>
------------------------	-----------------------------	---

# RNAV (GPS)-D

MISSOULA MONTANA (MISO)

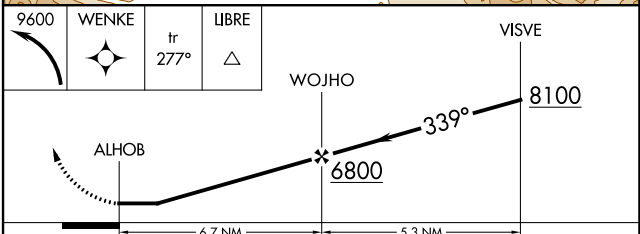
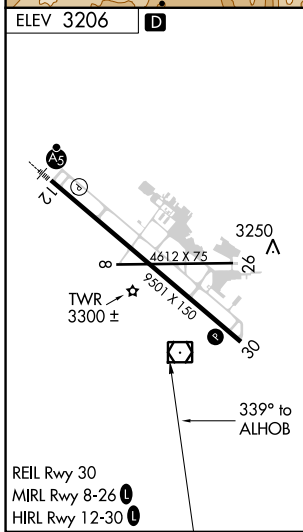
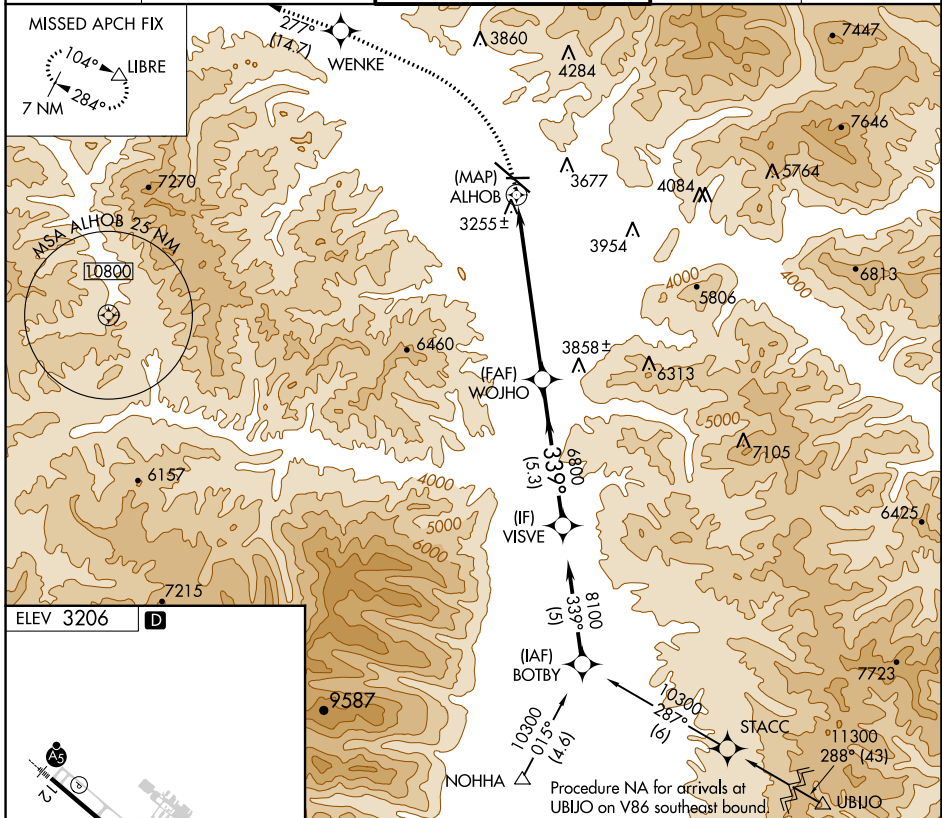
RNP APCH.

**▲** Circling NA for Cats C and D northeast of Rwy 12-30.

**❄** -12°C

MISSED APPROACH: Climbing left turn to 9600 direct WENKE and on track 277° to LIBRE and hold, continue climb-in-hold to 9600.

ATIS <b>126.65</b>	SPOKANE APP CON * <b>124.9 298.95</b>	MISSOULA TOWER * <b>118.4 (CTAF) 377.175</b>	GND CON <b>121.9</b>	UNICOM <b>122.95</b>
-----------------------	--	---	-------------------------	-------------------------



CATEGORY	A	B	C	D
<b>C</b> CIRCLING	4280-1¼ 1074 (1100-1¼)	4700-1½ 1494 (1500-1½)	4700-3 1494 (1500-3)	5140-3 1934 (2000-3)

NW-1, 22 FEB 2024 to 21 MAR 2024

NW-1, 22 FEB 2024 to 21 MAR 2024

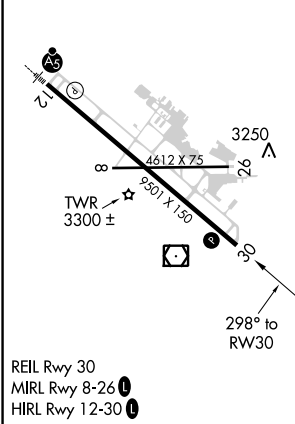
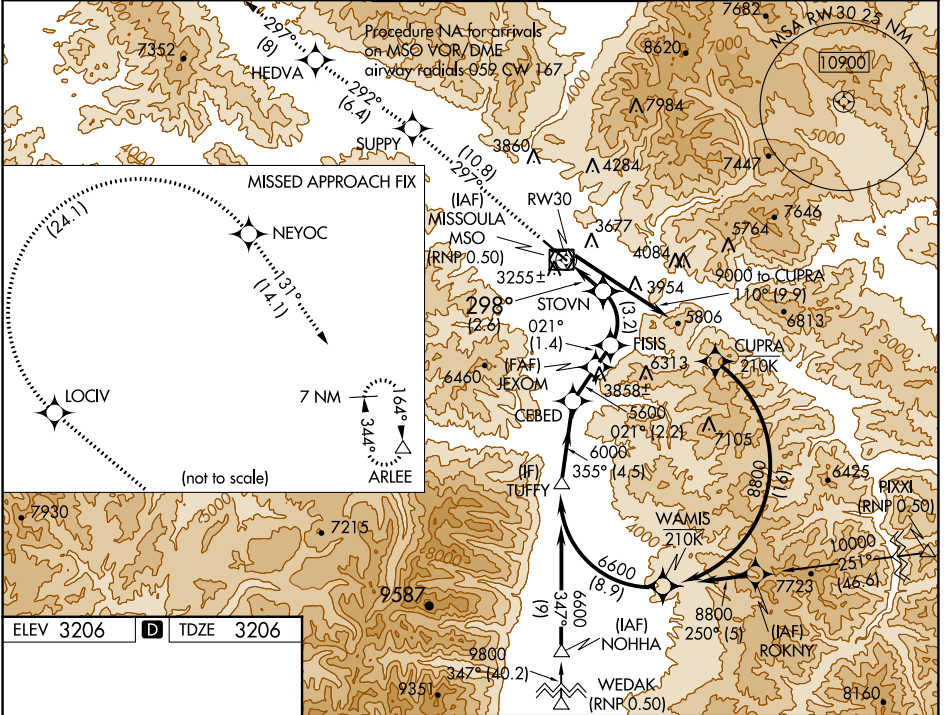
APP CRS	Rwy Idg	<b>9501</b>
<b>298°</b>	TDZE	<b>3206</b>
	Apt Elev	<b>3206</b>

# RNAV (RNP) RWY 30

MISSOULA MONTANA (MSO)

RNP AR APCH. RF required.	MISSED APPROACH: Climb to 11000 on track 297° to SUPPY and on track 292° to HEDVA and on track 297° to LOCIV, then right turn to NEYOC and on track 131° to ARLEE and hold. *Misted approach requires minimum climb of 215 feet per NM to 5000.
<p>For uncompensated Baro-VNAV systems, procedure NA below -21°C (-5°F) or above 43°C (109°F). When local altimeter setting not received, procedure NA.</p> <p>-12°C</p>	

ATIS <b>126.65</b>	SPOKANE APP CON * <b>124.9 298.95</b>	MISSOULA TOWER * <b>118.4 (CTAF) 377.175</b>	GND CON <b>121.9</b>	UNICOM <b>122.95</b>
-----------------------	--	---	-------------------------	-------------------------



11000 SUPPY	tr 297°	HEDVA	tr 292°	JEXOM	CEBCED	TUFFY
				FISIS 5135	5600	6600
		STOVN 4089		021°	021°	355°
				5600	6000	GP 3.00°
						TCH 50
				2.6 NM	3.2 NM	1.4 NM
				2.2 NM	4.5 NM	
CATEGORY	A	B	C	D		
RNP 0.30 DA *	3524-1		318 (400-1)			
RNP 0.30 DA	3582-1¼		376 (400-1¼)			

**AUTHORIZATION REQUIRED**

NW-1, 22 FEB 2024 to 21 MAR 2024

NW-1, 22 FEB 2024 to 21 MAR 2024

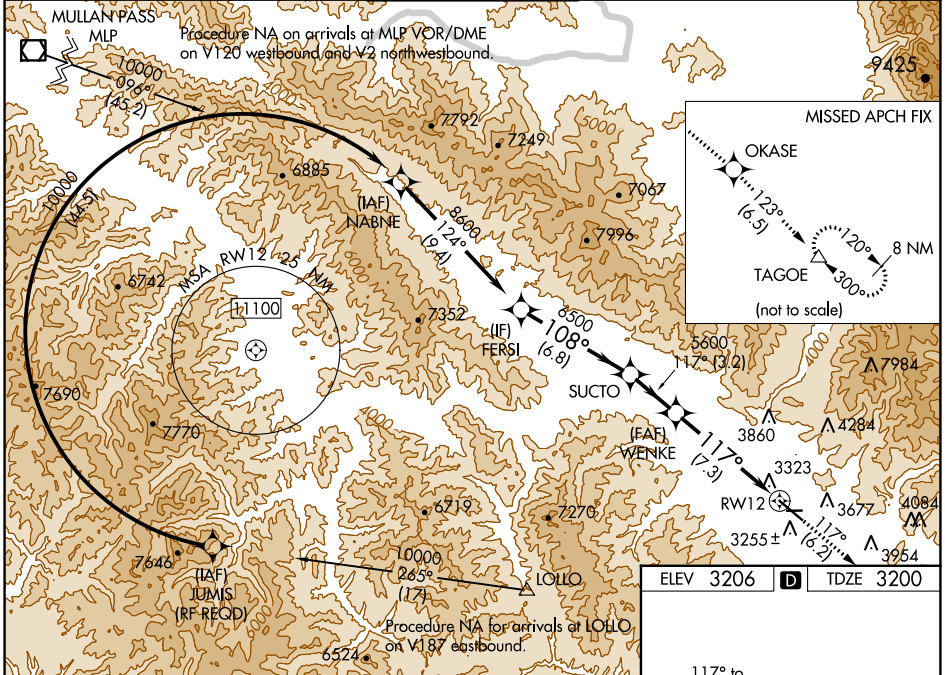
APP CRS	Rwy Idg	<b>9501</b>
<b>117°</b>	TDZE	<b>3200</b>
	Apt Elev	<b>3206</b>

# RNAV (RNP) Z RWY 12

MISSOULA MONTANA (MISO)

RNP AR APCH.		MALS R	<p>MISSED APPROACH: Climb to 13000 on track 117° to OKASE and on track 123° to TAGOE and hold, continue climb-in-hold to 13000.</p> <p>*Missed approach requires minimum climb of 350 feet per NM to 8300; if unable to meet climb gradient, see RNAV (GPS) Y RWY 12.</p> <p>#Missed approach requires minimum climb of 425 feet per NM to 8300.</p>
<p>▼ For uncompensated Baro-VNAV systems, LNAV/VNAV NA below -21° C (-6°F) or above 43°C (109°F).</p> <p>▲ For inop ALS, increase RNP 0.12 all Cats visibility to RVR 6000. For inop ALS, increase RNP 0.30 all Cats visibility to 2½ SM. When local weather not received, procedure NA.</p>			

ATIS	SPOKANE APP CON*	MISSOULA TOWER*	GND CON	UNICOM
<b>126.65</b>	<b>124.9 298.95</b>	<b>118.4 (CTAF) 0 377.175</b>	<b>121.9</b>	<b>122.95</b>



NW-1, 22 FEB 2024 to 21 MAR 2024

NW-1, 22 FEB 2024 to 21 MAR 2024

VGSi and RNAV glidepath not coincident (VGSi Angle 3.00/TCH 55).		13000	OKASE	TAGOE
FERSI	SUCTO	WENKE	RWY 12	
8600	6500	5600		
tr 117°	tr 123°			
6.8 NM	3.2 NM	7.3 NM		
GP 3.00°	TCH 45			
CATEGORY	A	B	C	D
RNP 0.12 DA#	3518/40		318 (400-¾)	
RNP 0.30 DA*	3880-2		680 (700-2)	
<b>AUTHORIZATION REQUIRED</b>				
		<p>REIL Rwy 30</p> <p>MIRL Rwy 8-26</p> <p>HIRL Rwy 12-30</p>		

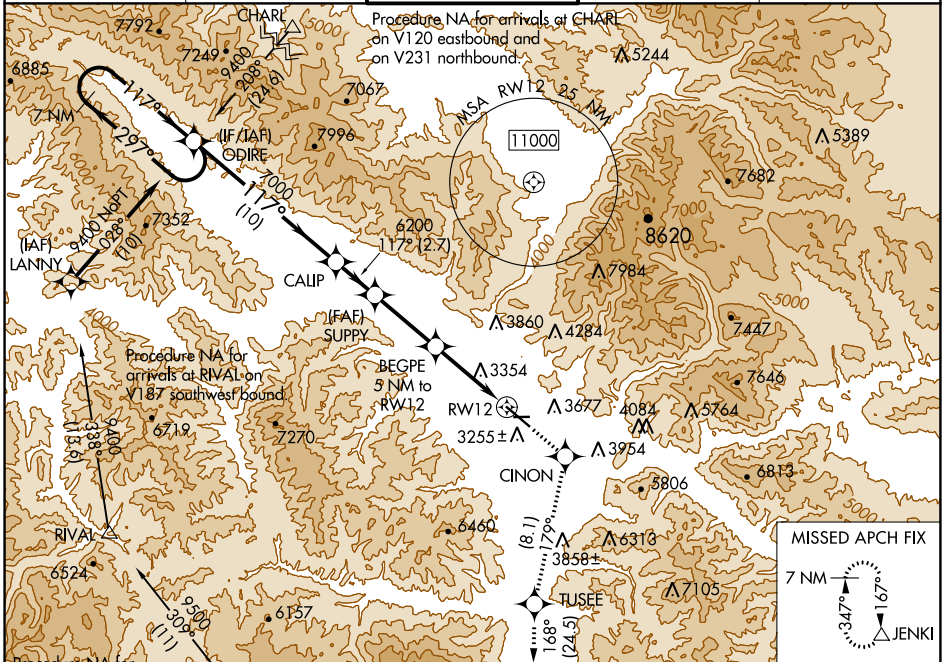
WAAS CH <b>65715</b> <b>W12B</b>	APP CRS <b>117°</b>	Rwy Idg TDZE Apt Elev	<b>9501</b> <b>3200</b> <b>3206</b>
--	------------------------	-----------------------------	---

# RNAV (GPS) Y RWY 12

MISSOULA MONTANA (MISO)

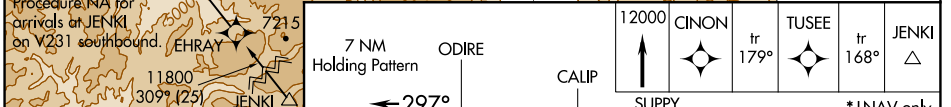
RNP APCH.	MALS R	MISSED APPROACH: (Do not exceed 200K until CINON) Climb to 12000 direct CINON and on track 179° to TUSEE and on track 168° to JENKI and hold, continue climb-in-hold to 12000. ## Missed approach requires minimum climb of 325 feet per NM to 7700.
<p>⚠ Circling N/A for Cats C and D northeast of Rwy 12-30. Inop table does not apply to LNAV # Cats C/D. Inop table does not apply to LPV † all Cats. **RVR 1800 authorized with use of FD or AP or HUD to DA.</p>		

ATIS <b>126.65</b>	SPOKANE APP CON * <b>124.9 298.95</b>	MISSOULA TOWER * <b>118.4 (CTAF) 0 377.175</b>	GND CON <b>121.9</b>	UNICOM <b>122.95</b>
-----------------------	--	---	-------------------------	-------------------------

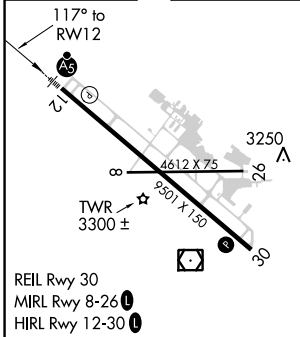


NW-1, 22 FEB 2024 to 21 MAR 2024

NW-1, 22 FEB 2024 to 21 MAR 2024



ELEV 3206	<b>D</b>	TDZE 3200
-----------	----------	-----------



CATEGORY	A	B	C	D
LPV DA **		3400/24	200 (200-½)	
LPV DA †		4229-4	1029 (1100-4)	
LNAV MDA ##	3640/24	440 (500-½)	3640/40	440 (500-¾)
LNAV MDA #	4520/40 1320 (1400-¾)	4520/55 1320 (1400-1)	4520-3	1320 (1400-3)
<b>C</b> CIRCLING	4520-1¼ 1314 (1400-1¼)	4700-1½ 1494 (1500-½)	4700-3 1494 (1500-3)	5140-3 1934 (2000-3)



