

**TOP ALTITUDE:
3000**

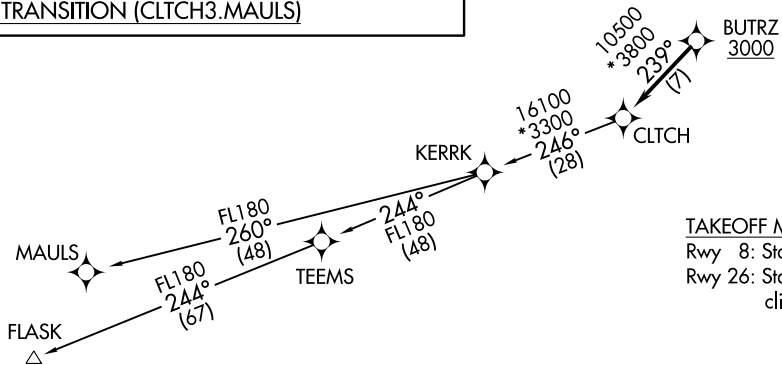
ASOS
119.925
CLINC DEL
121.8 257.65
132.075 269.075 (When twr closed)
GND CON
121.8 257.65
MARTINSBURG TOWER *
124.3 (CTAF) 233.7
POTOMAC DEP CON
126.825 239.025

DEPARTURE ROUTE DESCRIPTION

Climb on heading assigned by ATC, expect RADAR vectors to BUTRZ, then on track 239° to CLTCH, thence
. . . . on assigned transition, maintain altitude assigned by ATC, expect clearance to filed altitude within ten (10) minutes after departure.

FLASK TRANSITION (CLTCH3.FLASK)
MAULS TRANSITION (CLTCH3.MAULS)

- NOTE: RNAV 1.
- NOTE: RADAR required.
- NOTE: DME/DME/IRU or GPS required.
- NOTE: Turbo-jets only.
- NOTE: Takeoff Rwy 8: If issued an ATC heading that requires a westbound turn, climb heading 081° to 1200 prior to turning for obstacle avoidance.
- NOTE: Takeoff Rwy 26: If issued an ATC heading that requires a right turn, climb heading 261° to 2400 prior to turning for obstacle avoidance.



TAKEOFF MINIMUMS
Rwy 8: Standard.
Rwy 26: Standard with a minimum climb of 225' per NM to 2100.



NOTE: Chart not to scale.

CLTCH THREE DEPARTURE (RNAV)
(CLTCH3:CLTCH) 31DECC0

EASTERN WV RGNL/SHEPHERD FIELD (MRB)
MARTINSBURG, WEST VIRGINIA

(CLTCH3:CLTCH) 20366
CLTCH THREE DEPARTURE (RNAV)

EASTERN WV RGNL/SHEPHERD FIELD (MRB)
MARTINSBURG, WEST VIRGINIA
AL-249 (FAA)

(JDUBB4.JDUBB) 20366

EASTERN WV RGNL/SHEPHERD FIELD (M.R.B)

JDUBB FOUR DEPARTURE (RNAV) AL-249 (FAA)

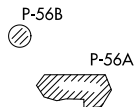
MARTINSBURG, WEST VIRGINIA

ASOS 119.925
 CLNC DEL
 121.8 257.65
 132.075 269.075 (When twr closed)
 GND CON
 121.8 257.65
 MARTINSBURG TOWER ★
 124.3 (CTAF) 233.7
 POTOMAC DEP CON
 126.825 239.025

TOP ALTITUDE:
3000

TAKEOFF MINIMUMS

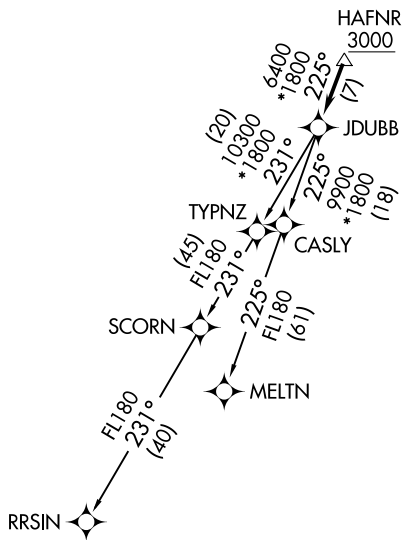
Rwy 8: Standard.
 Rwy 26: Standard with a minimum
 climb of 225' per NM to 2100.



- NOTE: RNAV 1.
- NOTE: RADAR required.
- NOTE: DME/DME/IRU or GPS required.
- NOTE: Turbo-jets only.
- NOTE: Takeoff Rwy 8: If issued an ATC heading that requires a westbound turn, climb heading 081° to 1200 prior to turning for obstacle avoidance.
- NOTE: Takeoff Rwy 26: If issued an ATC heading that requires a right turn, climb heading 261° to 2400 prior to turning for obstacle avoidance.

NE-4, 09 SEP 2021 to 07 OCT 2021

NE-4, 09 SEP 2021 to 07 OCT 2021



DEPARTURE ROUTE DESCRIPTION

Climb on heading assigned by ATC, expect RADAR vectors to HAFNR, then on track 225° to JDUBB, thence. . . .
 on assigned transition, maintain 3000, expect clearance to filed altitude within ten (10) minutes after departure.

MELTN TRANSITION (JDUBB4.MELTN)
RRSIN TRANSITION (JDUBB4.RRSIN)

NOTE: Chart not to scale.

JDUBB FOUR DEPARTURE (RNAV)
 (JDUBB4.JDUBB) 31DEC20

MARTINSBURG, WEST VIRGINIA
 EASTERN WV RGNL/SHEPHERD FIELD (M.R.B)

SCRAM SIX DEPARTURE (RNAV)
 (SCRAM6, SCRAM) 31 DEC 20

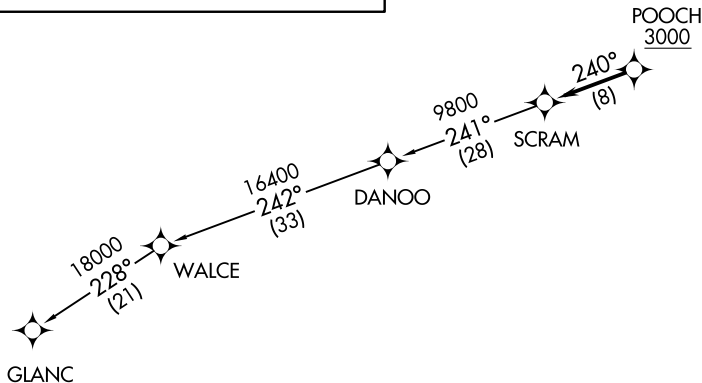
MARTINSBURG, WEST VIRGINIA
 EASTERN WV RGNL/SHEPHERD FIELD (MIRB)

ASOS 119.925
 CLNC DEL
 121.8 257.65
 132.075 269.075 (When Tower Closed)
 GND CON
 121.8 257.65
 MARTINSBURG TOWER ★
 124.3 (CTAF) 233.7
 POTOMAC DEP CON
 126.825 239.025

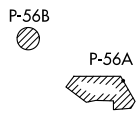
DEPARTURE ROUTE DESCRIPTION

Climb on heading assigned by ATC, expect RADAR vectors to POOCH, then on track 240° to SCRAM, thence. . . .
 . . . as depicted. Maintain 3000, expect clearance to filed altitude within ten (10) minutes after departure.

GLANC TRANSITION (SCRAM6.GLANC):



**TOP ALTITUDE:
3000**



TAKEOFF MINIMUMS
 Rwy 8: Standard.
 Rwy 26: Standard with a minimum climb of 225' per NM to 2100.

- NOTE: RNAV 1.
- NOTE: RADAR required.
- NOTE: DME/DME/IRU or GPS required.
- NOTE: Turbo-jets only.
- NOTE: Takeoff Rwy 8, if issued an ATC heading that requires a westbound turn, climb heading 081° to 1200 prior to turning for obstacle avoidance.
- NOTE: Takeoff Rwy 26, if issued an ATC heading that requires a right turn, climb heading 261° to 2400 prior to turning for obstacle avoidance.

NOTE: Chart not to scale.

(SCRAM6, SCRAM) 20366
 SCRAM SIX DEPARTURE (RNAV)

EASTERN WV RGNL/SHEPHERD FIELD (MIRB)
 MARTINSBURG, WEST VIRGINIA
 AL-249 (FAA)

(TRIXY5.TRIXY) 20310
TRIXY FIVE DEPARTURE

EASTERN WV RGNL/SHEPHERD FIELD (MRB)

AL-249 (FAA)

MARTINSBURG, WEST VIRGINIA

ASOS
 119.925
 CLNC DEL
 121.8 257.65
 132.075 269.075 (When Tower Closed)
 GND CON
 121.8 257.65
 MARTINSBURG TOWER*
 124.3 (CTAF) 233.7
 POTOMAC DEP CON
 126.825 239.025

TAKEOFF MINIMUMS

Rwy 8: Standard.
 Rwy 26: Standard with minimum climb
 of 300' per NM to 5000'.

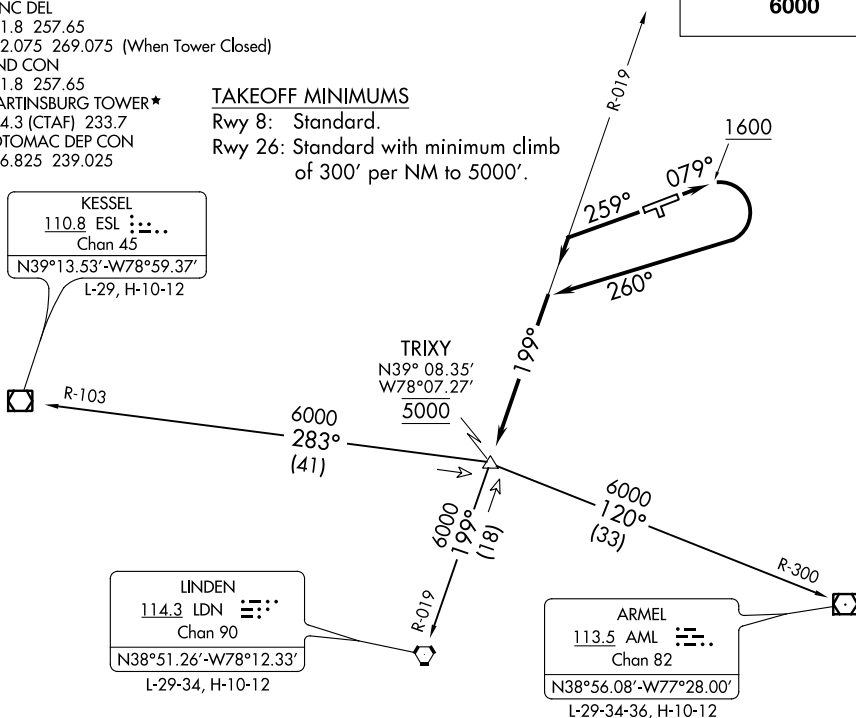
**TOP ALTITUDE:
 6000**

KESSEL
 110.8 ESL
 Chan 45
 N39°13.53'-W78°59.37'
 L-29, H-10-12

TRIXY
 N39° 08.35'
 W78°07.27'
 5000

LINDEN
 114.3 LDN
 Chan 90
 N38°51.26'-W78°12.33'
 L-29-34, H-10-12

ARMEL
 113.5 AML
 Chan 82
 N38°56.08'-W77°28.00'
 L-29-34-36, H-10-12



Note: Chart not to scale.

DEPARTURE ROUTE DESCRIPTION

TAKEOFF RUNWAY 8: Climb heading 079° to 1600, then climbing right turn heading 260° to intercept LDN VORTAC R-019 to cross TRIXY INT at 5000, then on transition or assigned route, thence . . .

TAKEOFF RUNWAY 26: Climb heading 259° to intercept LDN VORTAC R-019 to cross TRIXY INT at 5000, then on transition or assigned route, thence . . .
 . . . maintain 6000, expect filed altitude/flight level ten minutes after departure.

ARMEL TRANSITION (TRIXY5.AML): From over TRIXY INT on AML R-300 to AML VOR/DME.

KESSEL TRANSITION (TRIXY5.ESL): From over TRIXY INT on ESL R-103 to ESL VOR/DME.

LINDEN TRANSITION (TRIXY5.LDN): From over TRIXY INT on LDN R-019 to LDN VORTAC.

TRIXY FIVE DEPARTURE
 (TRIXY5.TRIXY) 31MAR16

MARTINSBURG, WEST VIRGINIA

EASTERN WV RGNL/SHEPHERD FIELD (MRB)

NE-4, 09 SEP 2021 to 07 OCT 2021

NE-4, 09 SEP 2021 to 07 OCT 2021