

APP CRS	Rwy Idg	3498
125°	TDZE	991
	Apt Elev	993

RNAV (GPS) RWY 13

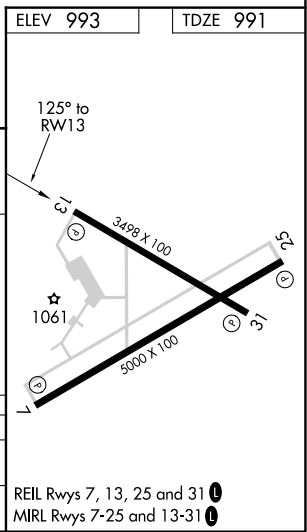
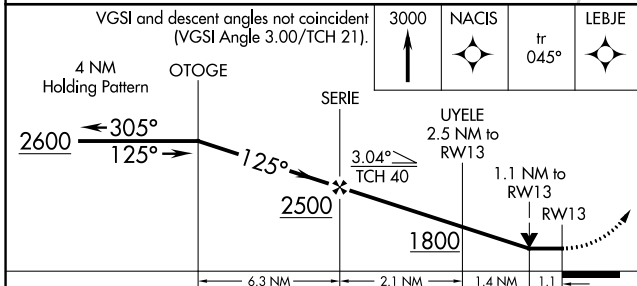
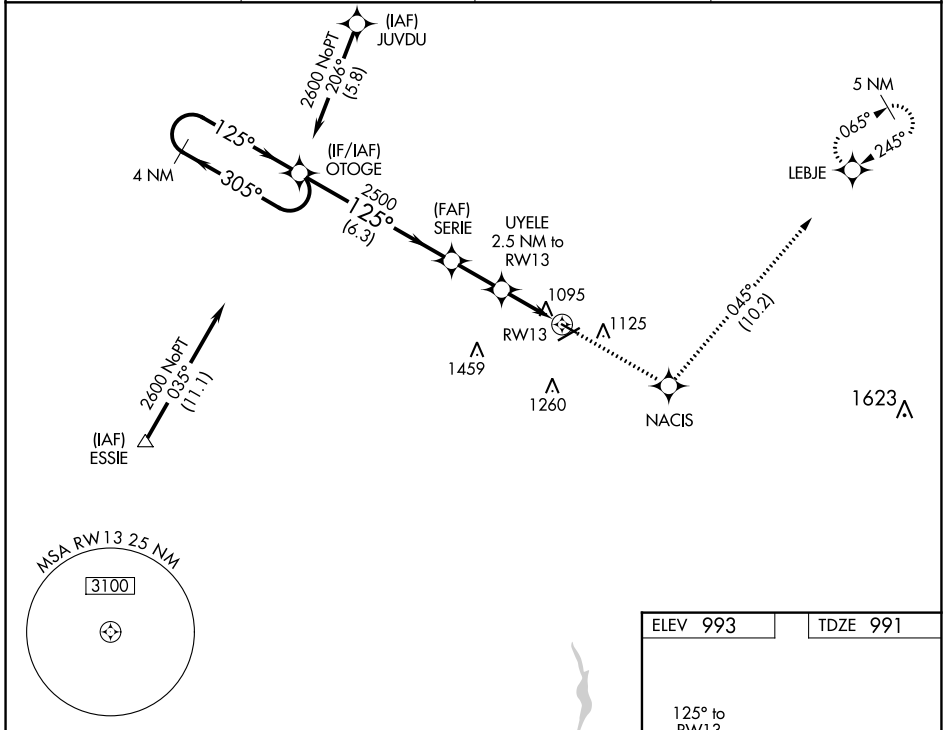
MARION MUNI (MNN)

RNP APCH.

▼ Rwy 13 helicopter visibility reduction below ¼ SM NA. VDP NA when using Ohio State University altimeter setting. When local altimeter setting not received, use Ohio State University altimeter setting: increase all MDAs 100 feet; increase LNAV Cats C/D and Circling Cat C visibility ¾ SM.

▲ MISSED APPROACH: Climb to 3000 direct NACIS and on track 045° to LEBJE and hold.

ASOS 119.975	CLEVELAND APP CON * 124.2 360.65	CLNC DEL 126.8	UNICOM 122.8 (CTAF) 0
------------------------	--	--------------------------	---------------------------------



CATEGORY	A	B	C	D
LNAV MDA	1360-1 369 (400-1)		1360-1¼ 369 (400-1¼)	
CIRCLING	1480-1 487 (500-1)	1500-1 507 (600-1)	1540-1½ 547 (600-1½)	1560-2 567 (600-2)

REIL Rwy 7, 13, 25 and 31 0
MIRL Rwy 7-25 and 13-31 0

EC-2, 07 OCT 2021 to 04 NOV 2021

EC-2, 07 OCT 2021 to 04 NOV 2021

WAAS CH 62904 W25A	APP CRS 245°	Rwy Idg TDZE Apt Elev	5000 993 993
--	------------------------	-----------------------------	---

RNAV (GPS) RWY 25

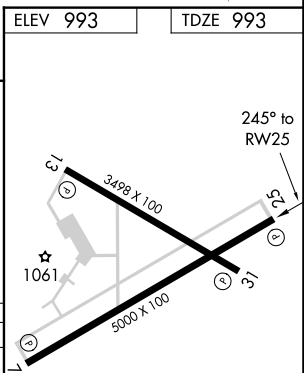
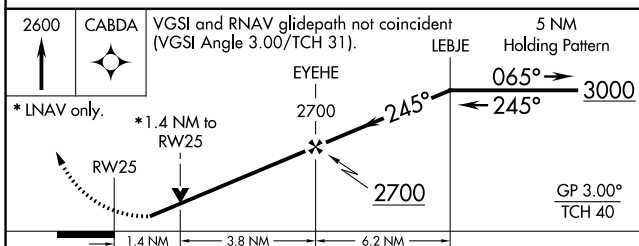
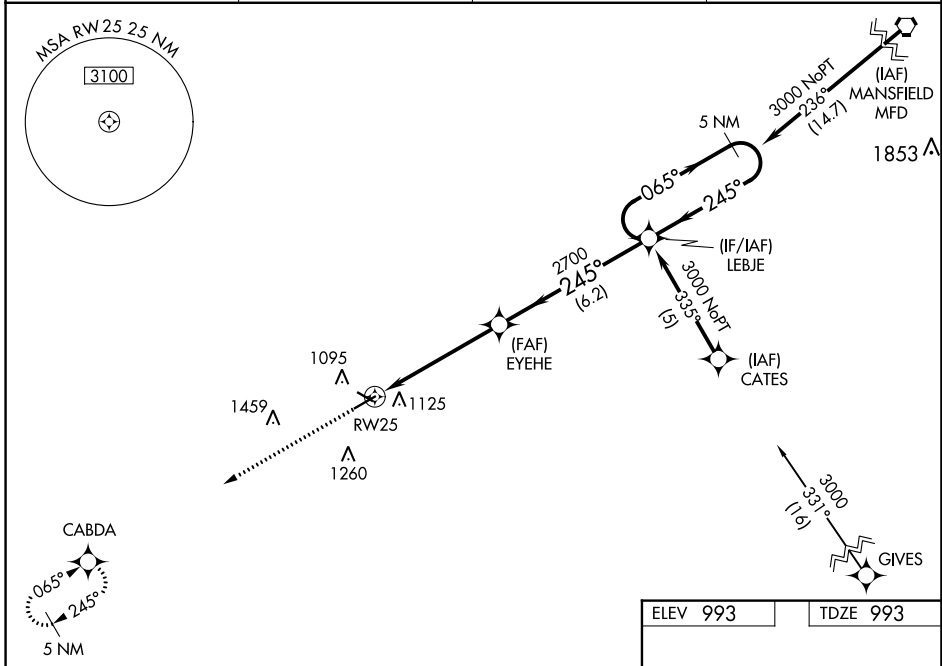
MARION MUNI (MNN)

RNP APCH.

▼ For uncompensated Baro-VNAV systems, LNAV/VNAV NA below -16°C (4°F) or above 54°C (130°F). Baro-VNAV and VDP NA when using Ohio State University altimeter setting. Rwy 25 helicopter visibility reduction below 3/4 SM NA. When local altimeter setting not received, use Ohio State University altimeter setting and increase all DAs 87 feet and all MDAs 100 feet.

▲ MISSED APPROACH: Climb to 2600 direct CABDA and hold.

ASOS 119.975	CLEVELAND APP CON * 124.2 360.65	CLNC DEL 126.8	UNICOM 122.8 (CTAF) 0
------------------------	--	--------------------------	---------------------------------



CATEGORY	A	B	C	D
LPV DA		1334-1¼	341 (400-1¼)	
LNAV/VNAV DA		1443-1½	450 (500-1½)	
LNAV MDA	1460-1	467 (500-1)	1460-1½	467 (500-1½)
CIRCLING	1480-1 487 (500-1)	1500-1 507 (600-1)	1540-1¾ 547 (600-1¾)	1560-2 567 (600-2)

REIL Rwy 7, 13, 25 and 31 0

MIRL Rwy 7-25 and 13-31 0

EC-2, 07 OCT 2021 to 04 NOV 2021

EC-2, 07 OCT 2021 to 04 NOV 2021

WAAS CH 93604 W07A	APP CRS 065°	Rwy Idg TDZE Apt Elev	5000 990 993
--	------------------------	-----------------------------	---

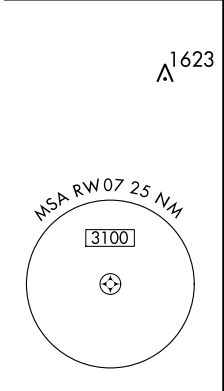
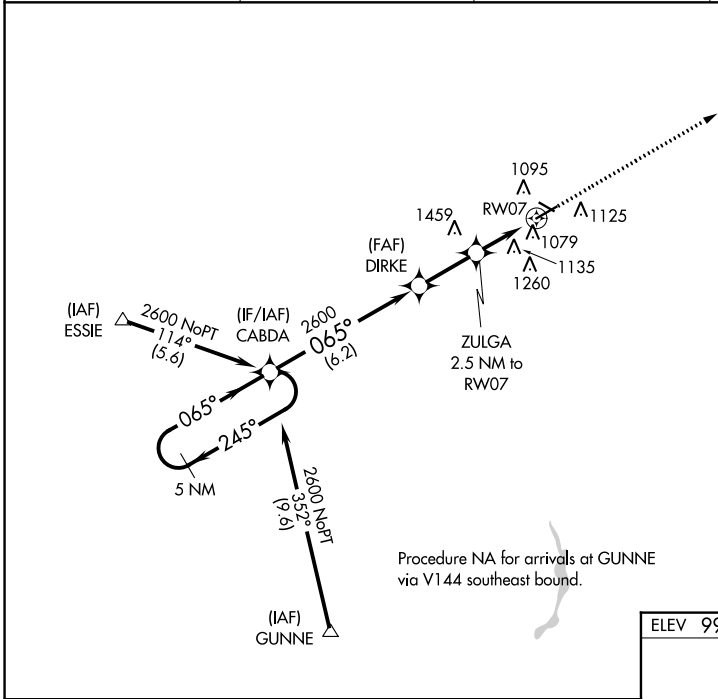
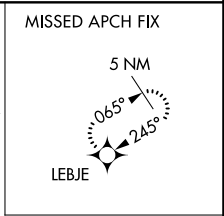
RNAV (GPS) RWY 7

MARION MUNI (MNN)

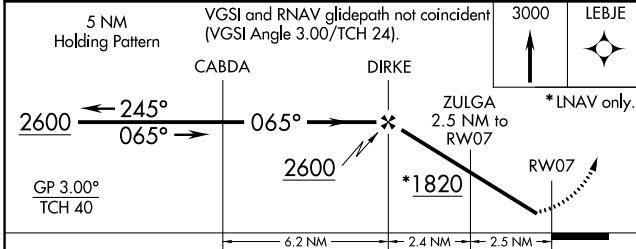
▼ If local altimeter setting not received, use Ohio State University altimeter setting and increase LPV DA 87 feet, LNAV/VNAV DA 195 feet, and all MDAS 100 feet.
▲ Baro-VNAV NA when using Ohio State University altimeter setting. For uncompensated Baro-VNAV systems, LNAV/VNAV NA below -16°C (4°F) or above 46°C (114°F). Visibility reduction by helicopters NA. DME/DME RNP-0.3 NA.

MISSED APPROACH:
Climb to 3000 direct LEBJE and hold.

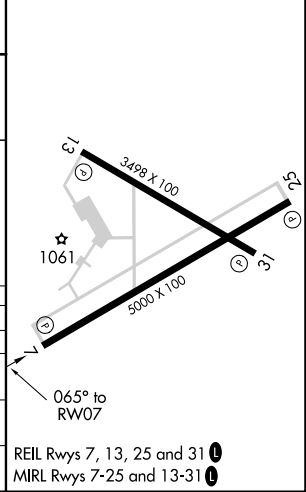
ASOS 119.975	CLEVELAND APP CON * 124.2 360.65	CLNC DEL 126.8	UNICOM 122.8 (CTAF) 0
------------------------	--	--------------------------	---------------------------------



Procedure NA for arrivals at GUNNE via V144 southeast bound.



ELEV 993	TDZE 990
----------	----------



CATEGORY	A	B	C	D
LPV DA	1240-1 250 (300-1)			
LNAV/VNAV DA	1379-1½ 389 (400-1½)			
LNAV MDA	1440-1 450 (500-1)	1440-1¼ 450 (500-1¼)		1440-1½ 450 (500-1½)
CIRCLING	1480-1 487 (500-1)	1500-1 507 (600-1)	1540-1½ 547 (600-1½)	1560-2 567 (600-2)

EC-2, 07 OCT 2021 to 04 NOV 2021

EC-2, 07 OCT 2021 to 04 NOV 2021

VOR BUD 109.8	APP CRS 261°	Rwy Idg TDZE Apt Elev N/A N/A 993
-------------------------	------------------------	---

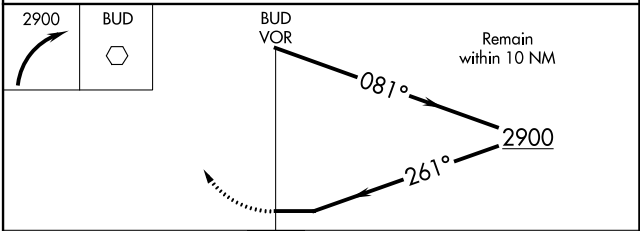
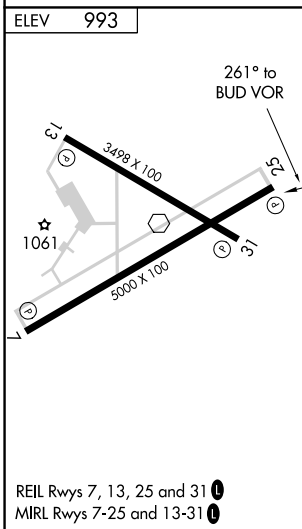
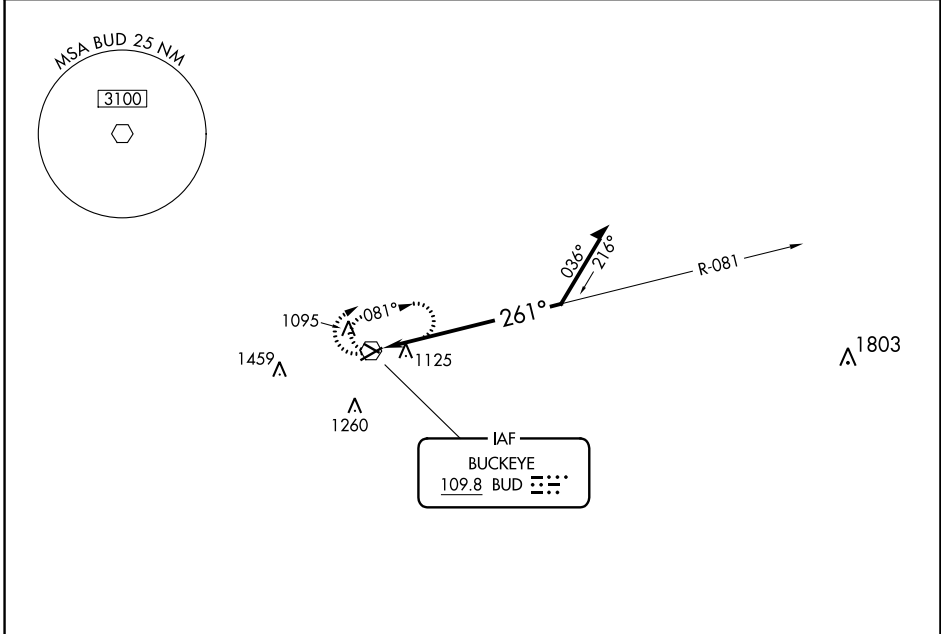
VOR-A
MARION MUNI (MNN)

RADAR required for procedure entry.

⚠ When local altimeter setting not received, use Ohio State University altimeter setting: increase all MDAs 100 feet and visibility Cats C and D ½ SM.

MISSED APPROACH: Climbing right turn to 2900 in BUD VOR holding pattern.

ASOS 119.975	CLEVELAND APP CON ★ 124.2 360.65	CLNC DEL 126.8	UNICOM 122.8 (CTAF) 0
------------------------	--	--------------------------	---------------------------------



CATEGORY	A	B	C	D
CIRCLING	1640-1	647 (700-1)	1640-1¾ 647 (700-1¾)	1640-2 647 (700-2)

EC-2, 07 OCT 2021 to 04 NOV 2021

EC-2, 07 OCT 2021 to 04 NOV 2021