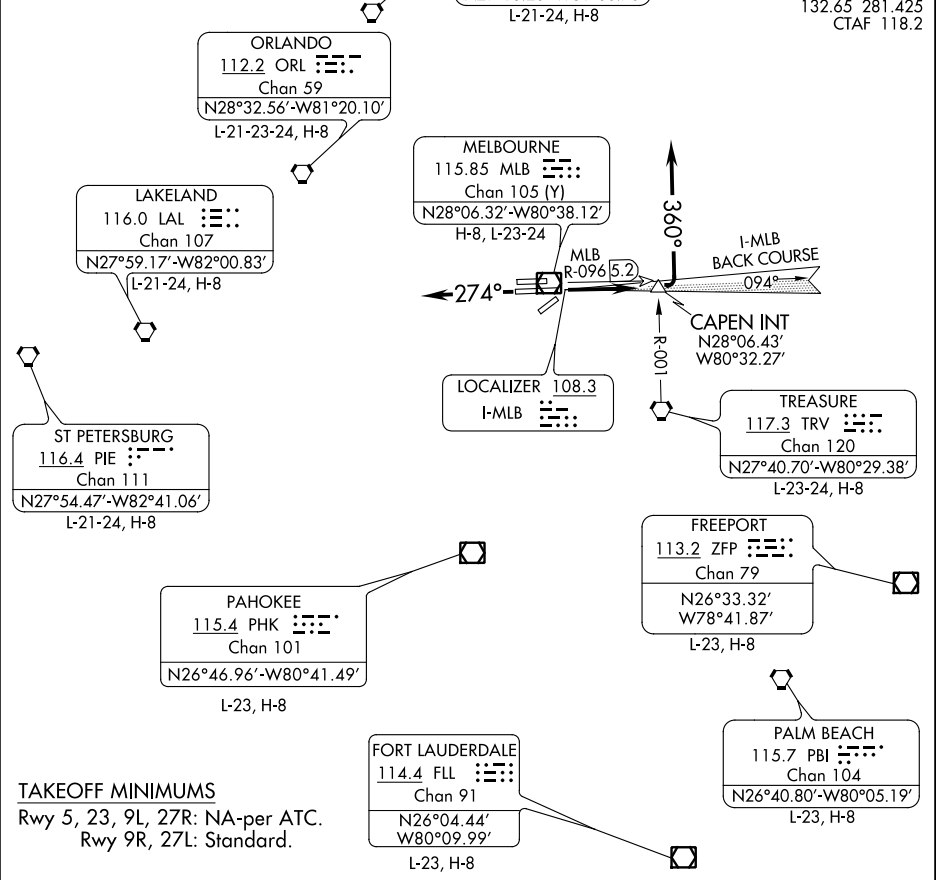


# MELBOURNE SEVEN DEPARTURE

MELBOURNE, FLORIDA

**TOP ALTITUDE:  
5000**

ATIS  
132.55  
CLNC DEL  
121.9  
132.65 (When twr closed)  
ORLANDO DEP CON  
132.65 281.425  
CTAF 118.2



**TAKEOFF MINIMUMS**  
Rwy 5, 23, 9L, 27R: NA-per ATC.  
Rwy 9R, 27L: Standard.

NOTE: RADAR required.

NOTE: Chart not to scale.

## DEPARTURE ROUTE DESCRIPTION

**TAKEOFF RUNWAY 9R:** Climb on MLB VOR/DME R-096 to CAPEN INT/MLB VOR/DME 5.2 DME, then turn left heading 360°, thence. . . .

**TAKEOFF RUNWAY 27L:** Climb heading 274°, thence. . . .

. . . .all aircraft expect RADAR vectors to join assigned route. Maintain 5000 or assigned altitude. Expect clearance to filed altitude/flight level 10 minutes after departure.

# MELBOURNE SEVEN DEPARTURE