

LOC I-MKT **108.7** APP CRS **335°** Rwy Idg **6600**
 TDZE **1021**
 Apt Elev **1021**

COPTER ILS Z or LOC Z RWY 33

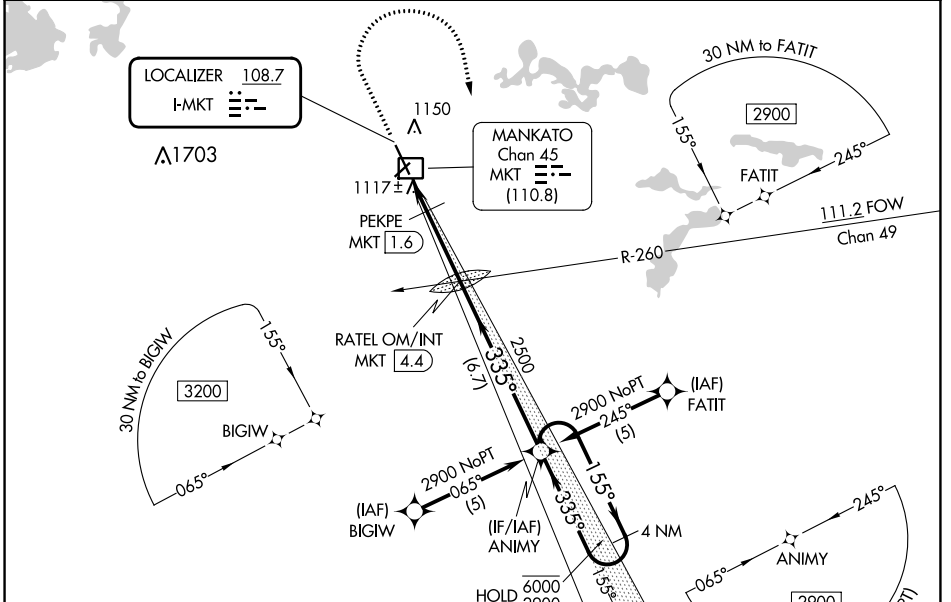
MANKATO RGNL (MKT)

RNP APCH - GPS.

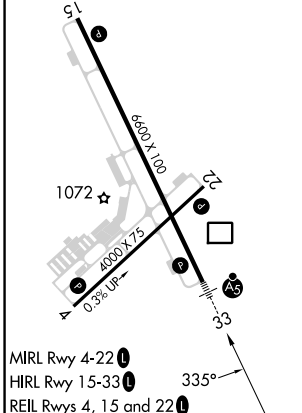
DME from MKT DME. DME use requires simultaneous reception of I-MKT and MKT DME. For inop ALS, increase H-ILS 33 visibility to 3/8 SM, H-LOC 33 to 1/2 SM, and PEKPE fix minimums H-LOC 33 to 1/2 SM. * DME from MKT DME.

MALSR
 MISSED APPROACH: Climb to 1500 then climbing right turn to 2900 direct ANIMY and hold.

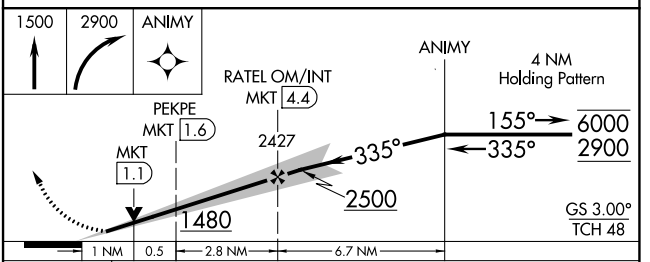
AWOS-3PT **118.175** MINNEAPOLIS CENTER **135.0 306.9** UNICOM **122.725 (CTAF)**



ELEV 1021 TDZE 1021



FAF to MAP 4.3 NM					
Knots	45	60	75	90	105
Min:Sec	5:44	4:18	3:26	2:52	2:27



CATEGORY	COPTER	
H-ILS 33	1221-1/4	200 (200-1/4)
H-LOC 33	1480-1/4	459 (500-1/4)
PEKPE FIX MINIMUMS*		
H-LOC 33	1380-1/4	359 (400-1/4)

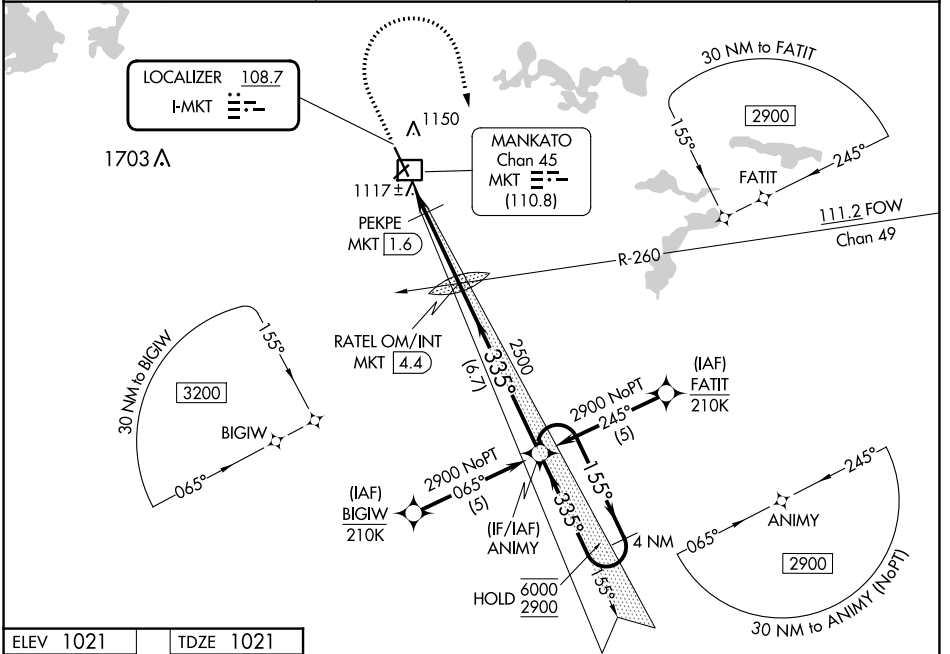
COPTER ILS Z or LOC Z RWY 33

LOC I-MKT 108.7	APP CRS 335°	Rwy Idg TDZE Apt Elev	6600 1021 1021
---------------------------	------------------------	-----------------------------	---

ILS Y or LOC Y RWY 33

MANKATO RGNL (MKT)

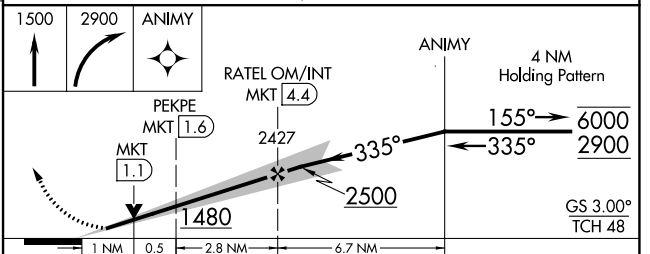
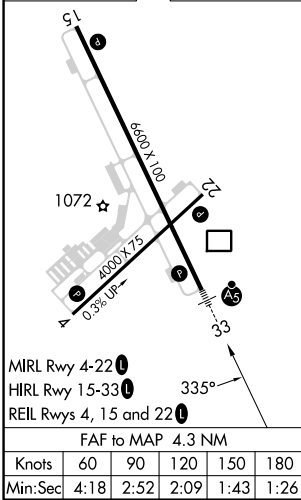
RNP APCH - GPs.	MALSR	MISSED APPROACH: Climb to 1500 then climbing right turn to 2900 direct ANIMY and hold.
AWOS-3PT 118.175	MINNEAPOLIS CENTER 135.0 306.9	UNICOM 122.725 (CTAF)



NC-1, 22 FEB 2024 to 21 MAR 2024

NC-1, 22 FEB 2024 to 21 MAR 2024

ELEV 1021	TDZE 1021
-----------	-----------



CATEGORY	A	B	C	D
S-ILS 33	1221-1/2 200 (200-1/2)			
S-LOC 33	1480-1/2	459 (500-1/2)	1480-7/8	459 (500-7/8)
CIRCLING	1480-1	459 (500-1)	1600-1/2	1600-2
			579 (600-1/2)	579 (600-2)
PEKPE FIX MINIMUMS*				
S-LOC 33	1380-1/2	359 (400-1/2)	1380-5/8	359 (400-5/8)
CIRCLING	1460-1	1480-1	1600-1/2	1600-2
	439 (500-1)	459 (500-1)	579 (600-1/2)	579 (600-2)

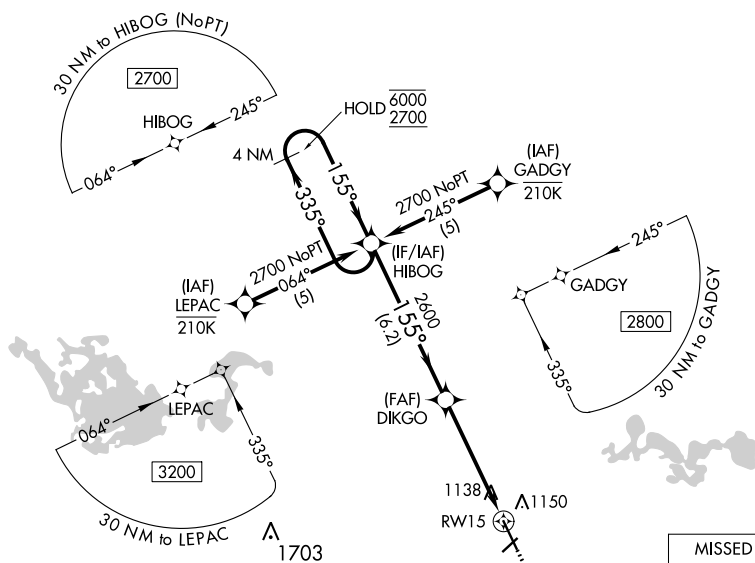
WAAS CH 45615 W15A	APP CRS 155°	Rwy ldg TDZE Apt Elev	6600 1020 1021
---------------------------------	------------------------	-----------------------------	---

RNAV (GPS) RWY 15

MANKATO RGNL (MKT)

RNP APCH - GPS.	MISSED APPROACH: Climb to 2900 direct ANIMY and hold.
<p>⚠ For uncompensated Baro-VNAV systems, LNAV/VNAV NA below -17°C or above 54°C. Rwy 15 helicopter visibility reduction below 1 SM NA.</p>	

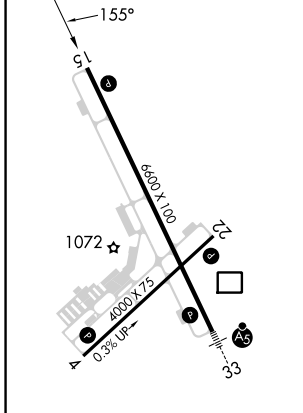
AWOS-3PT 118.175	MINNEAPOLIS CENTER 135.0 306.9	UNICOM 122.725 (CTAF) 0
----------------------------	--	-----------------------------------



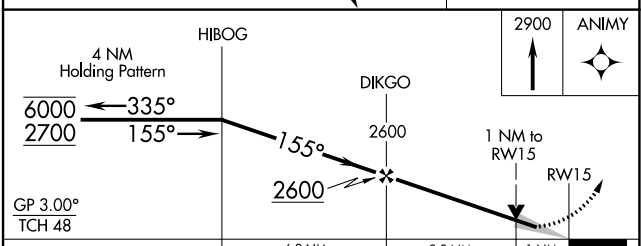
NC-1, 22 FEB 2024 to 21 MAR 2024

NC-1, 22 FEB 2024 to 21 MAR 2024

ELEV 1021	TDZE 1020
-----------	-----------



MIRL Rwy 4-22 **Ⓛ**
 HIRL Rwy 15-33 **Ⓛ**
 REIL Rws 4, 15 and 22 **Ⓛ**



CATEGORY	A	B	C	D
LPV DA		1270-1	250 (300-1)	
LNAV/VNAV DA		1299-1	279 (300-1)	
LNAV MDA		1400-1	380 (400-1)	
CIRCLING	1460-1	1480-1	1600-1½	1600-2
	439 (500-1)	459 (500-1)	579 (600-1½)	579 (600-2)

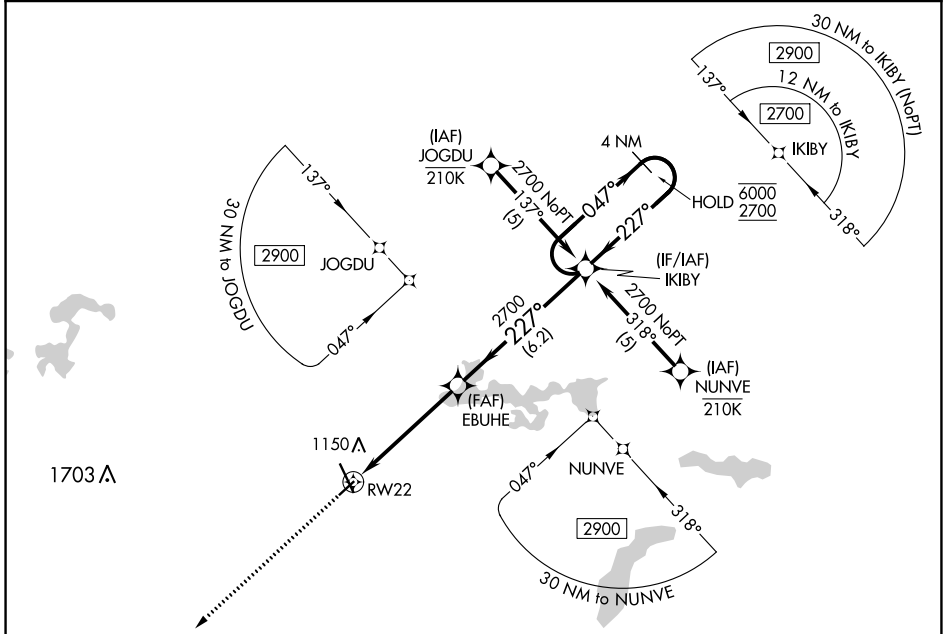
APP CRS	Rwy Idg	4000
227°	TDZE	1021
	Apt Elev	1021

RNAV (GPS) RWY 22

MANKATO RGNL (MKT)

RNP APCH - GPS.	MISSED APPROACH: Climb to 2700 direct KABGE and hold.
<p>Rwy 22 helicopter visibility reduction below 1 SM NA.</p>	

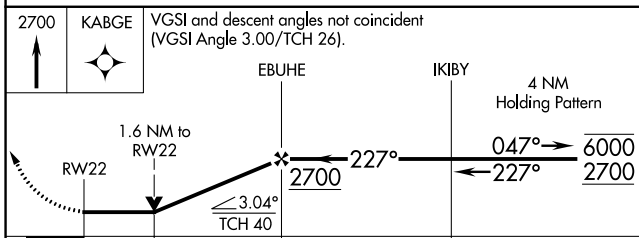
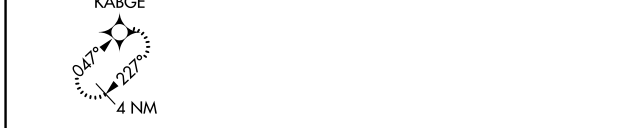
AWOS-3PT 118.175	MINNEAPOLIS CENTER 135.0 306.9	UNICOM 122.725 (CTAF) 0
----------------------------	--	-----------------------------------



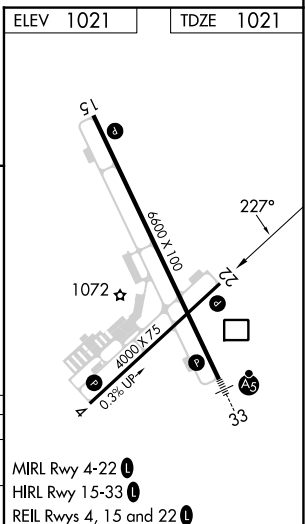
NC-1, 22 FEB 2024 to 21 MAR 2024

NC-1, 22 FEB 2024 to 21 MAR 2024

ELEV 1021	TDZE 1021
-----------	-----------



CATEGORY	A	B	C	D
LNVA MDA	1560-1	539 (600-1)	1560-1½ 539 (600-1½)	NA
CIRCLING	1560-1	539 (600-1)	1600-1½ 579 (600-1½)	NA



MIRL Rwy 4-22
HIRL Rwy 15-33
REIL Rws 4, 15 and 22

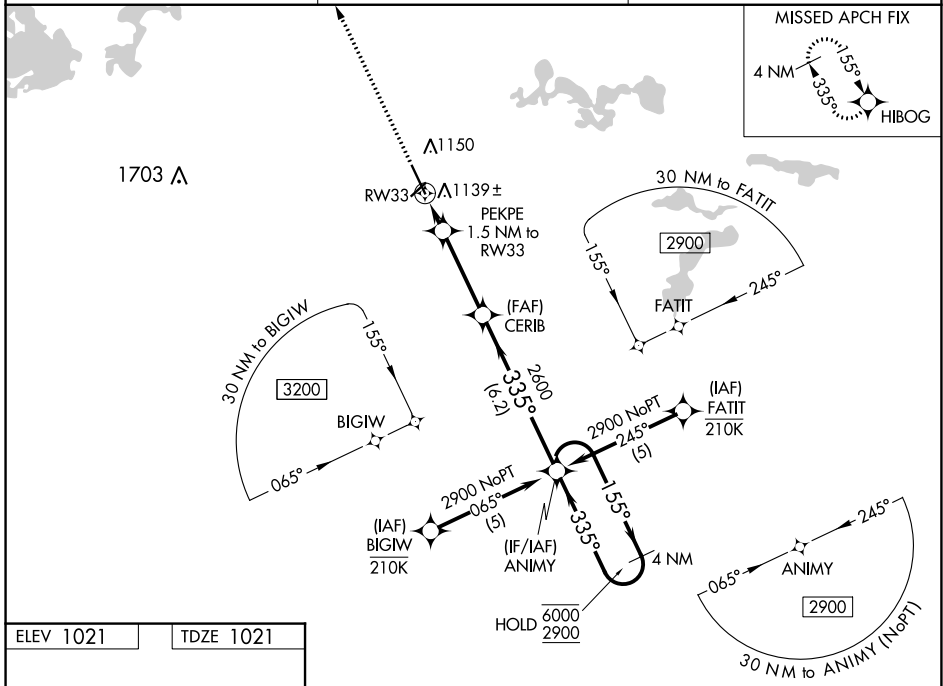
WAAS CH 86315 W33A	APP CRS 335°	Rwy ldg 6600 TDZE 1021 Apt Elev 1021
--	------------------------	---

RNAV (GPS) RWY 33

MANKATO RGNL (MKT)

RNP APCH - GPS. ▼ For uncompensated Baro-VNAV systems, LNAV/VNAV NA below -17°C or above 54°C. For inop ALS, increase LNAV/VNAV all Cats visibility to ¾ SM and LNAV Cats C and D visibility to 1 SM.	MALSR 	MISSED APPROACH: Climb to 2700 direct HIBOG and hold.
--	-----------	---

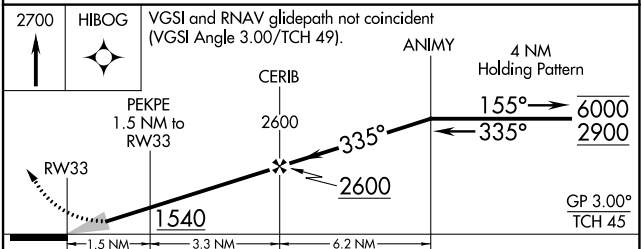
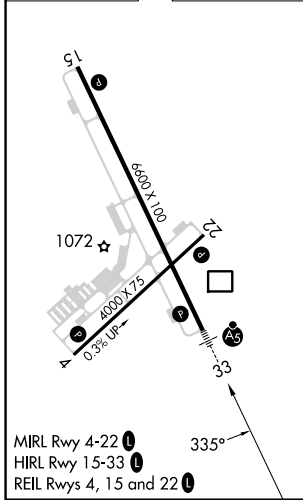
AWOS-3PT 118.175	MINNEAPOLIS CENTER 135.0 306.9	UNICOM 122.725 (CTAF)
----------------------------	--	---------------------------------



NC-1, 22 FEB 2024 to 21 MAR 2024

NC-1, 22 FEB 2024 to 21 MAR 2024

ELEV 1021	TDZE 1021
-----------	-----------



CATEGORY	A	B	C	D
LPV DA		1221-½	200 (200-½)	
LNAV/VNAV DA		1320-½	299 (300-½)	
LNAV MDA	1400-½	379 (400-½)	1400-⅝	379 (400-⅝)
CIRCLING	1460-1 439 (500-1)	1480-1 459 (500-1)	1600-1½ 579 (600-1½)	1600-2 579 (600-2)

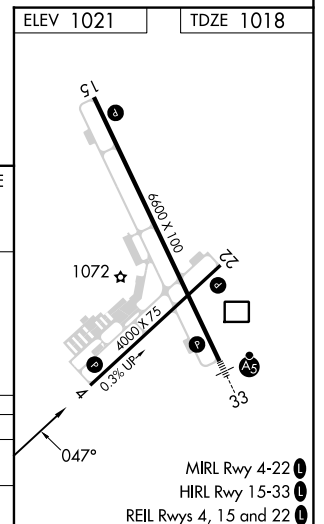
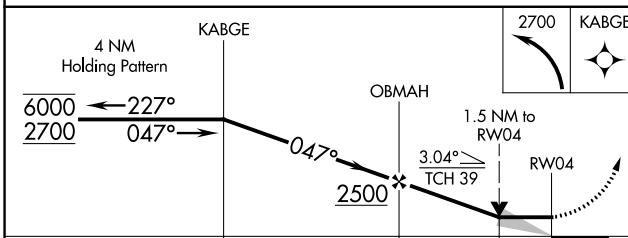
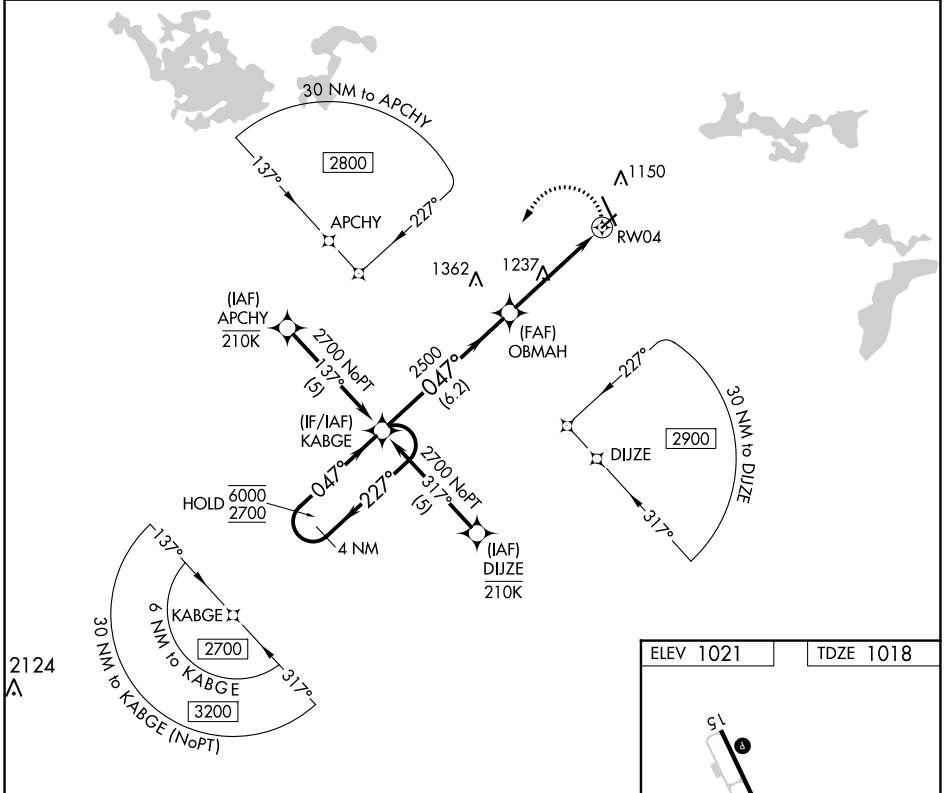
APP CRS	Rwy Idg	4000
047°	TDZE	1018
	Apt Elev	1021

RNAV (GPS) RWY 4

MANKATO RGNL (MKT)

RNP APCH - GPS.	MISSED APPROACH: Climbing left turn to 2700 direct KABGE and hold.
-----------------	--

AWOS-3PT 118.175	MINNEAPOLIS CENTER 135.0 306.9	UNICOM 122.725 (CTAF) 0
----------------------------	--	-----------------------------------



CATEGORY	A	B	C	D
LNVA MDA	1540-1	522 (600-1)	1540-1½ 522 (600-1½)	NA
CIRCLING	1540-1	519 (600-1)	1600-1½ 579 (600-1½)	NA

MIRL Rwy 4-22 1
HIRL Rwy 15-33 1
REIL Rwy 4, 15 and 22 1

NC-1, 22 FEB 2024 to 21 MAR 2024

NC-1, 22 FEB 2024 to 21 MAR 2024