

WAAS CH 42909 W36A	APP CRS 359°	Rwy Idg TDZE Apt Elev	5000 54 55
--	------------------------	-----------------------------	---------------------------------------

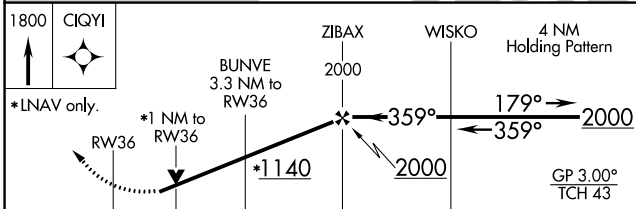
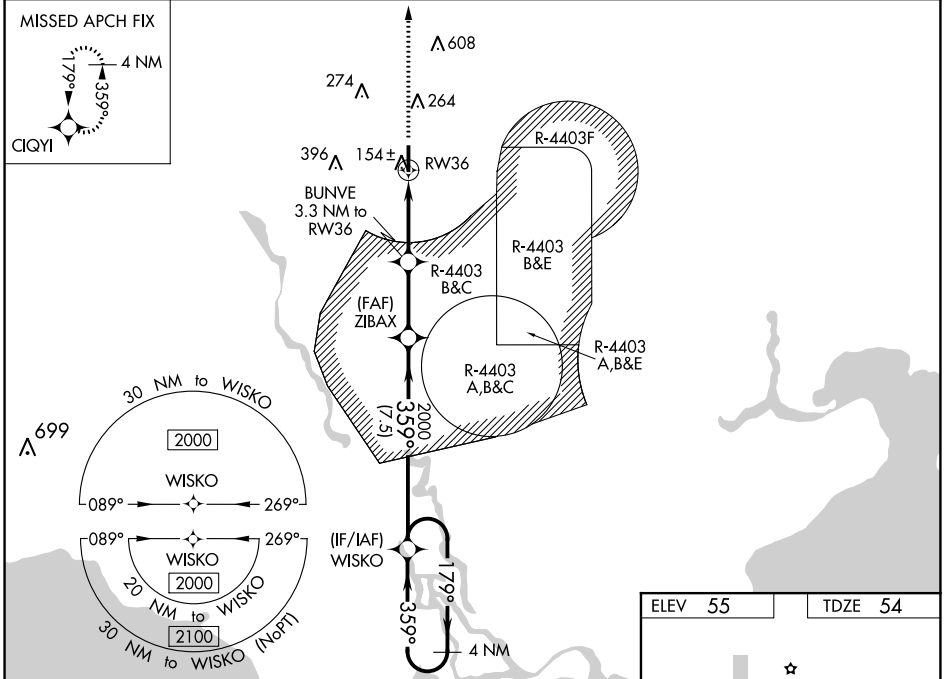
RNAV (GPS) RWY 36

PICAYUNE MUNI (MJJ)

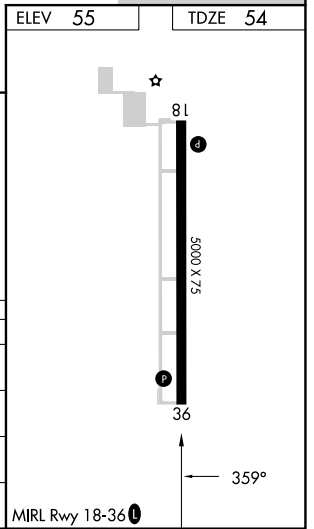
⚠ For uncompensated Baro-VNAV systems, LNAV/VNAV NA below -1.5°C (5°F) or above 54°C (130°F). Baro-VNAV and VDP NA when using Stennis Inlt altimeter setting. DME/DME RNP-0.3 NA. Helicopter visibility reduction below 3/4 SM NA. Procedure NA when R-4403 A, B, C, or E is active. When local altimeter setting not received, use Stennis Inlt altimeter setting; increase LPV DA to 338 and all Cats visibility 1/8 mile; increase LNAV/VNAV DA to 374 and all Cats visibility 1/8 mile; increase all MDA 40 feet and LNAV Cats C and D visibility 1/8 mile, and Circling Cat C visibility 1/4 mile.

MISSED APPROACH:
Climb to 1800 direct
CIQYI and hold.

AWOS-3PT 119.075	GULFPORT APP CON * 124.6 354.1	UNICOM 122.8 (CTAF)
----------------------------	--	-------------------------------



CATEGORY	A	B	C	D
LPV DA		304-7/8	250 (300-7/8)	
LNAV/VNAV DA		340-1	286 (300-1)	
LNAV MDA		420-1	366 (400-1)	
C CIRCLING	480-1 425 (500-1)	580-1 525 (600-1)	700-1 3/4 645 (700-1 3/4)	960-3 905 (1000-3)



SC-4, 22 FEB 2024 to 21 MAR 2024

SC-4, 22 FEB 2024 to 21 MAR 2024

WAAS CH 42938 W18A	APP CRS 179°	Rwy Idg 5000 TDZE 55 Apt Elev 55
--	------------------------	---

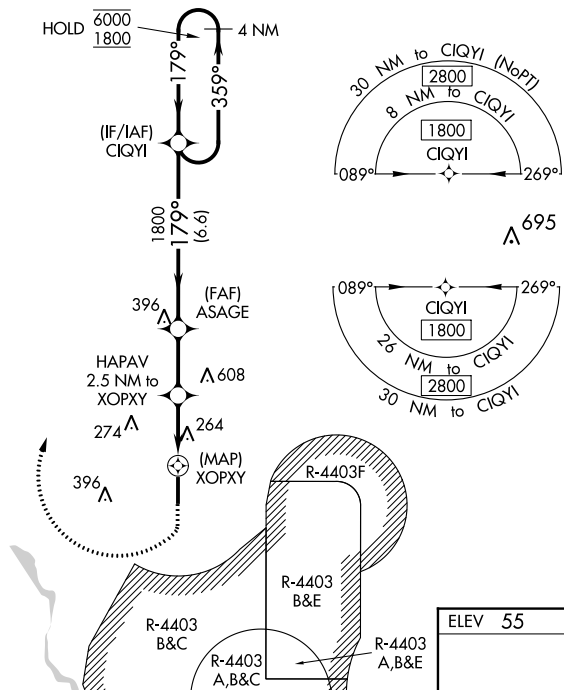
RNAV (GPS) Y RWY 18

PICAYUNE MUNI (MJD)

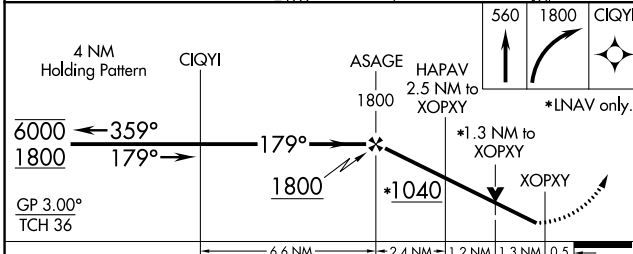
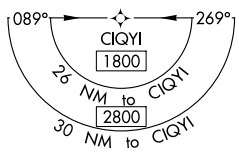
RNP APCH.	AWOS-3PT 119.075	GULFPORT APP CON * 124.6 354.1	UNICOM 122.8 (CTAF) 0
-----------	----------------------------	--	---------------------------------

⚠ Baro-VNAV and VDP NA when using Stennis Intl altimeter setting. Rwy 18 helicopter visibility reduction below 3/4 SM NA. For uncompensated Baro-VNAV systems, LNAV/VNAV NA below -15°C or above 5°C. When local altimeter setting not received, use Stennis Intl altimeter setting: increase LPV DA to 377 and visibility all Cats 1/8 mile; increase LNAV/VNAV DA to 621 and visibility all Cats 1/8 mile; increase all MDA 40 feet. Procedure NA when R-4403 B/C/E is active.

MISSED APPROACH: (Do not exceed 185K) Climb to 560 then climbing right turn to 1800 direct CIQYI and hold.



Obstacle clearance diagram for the 30 NM to CIQYI (NoPT) segment. It shows a 30 NM arc with a 2800' obstacle. The heading is 179°. The distance to the next obstacle is 8 NM to CIQYI (1800'). The heading at CIQYI is 089° to 269°.



ELEV 55	TDZE 55
---------	---------

Vertical scale diagram showing altitudes 81, 5000 X 75, and 36. A 179° heading is indicated.

CATEGORY	A	B	C	D
LPV DA	343-1		288 (300-1)	
LNAV/VNAV DA	587-1 7/8		532 (600-1 1/2)	
LNAV MDA	520-1	465 (500-1)	520-1 3/8	465 (500-1 3/8)
C CIRCLING	520-1 465 (500-1)	580-1 525 (600-1)	NA	

SC-4, 22 FEB 2024 to 21 MAR 2024

SC-4, 22 FEB 2024 to 21 MAR 2024

WAAS CH 99310 W18B	APP CRS 179°	Rwy Idg 5000 TDZE 55 Apt Elev 55
--	------------------------	---

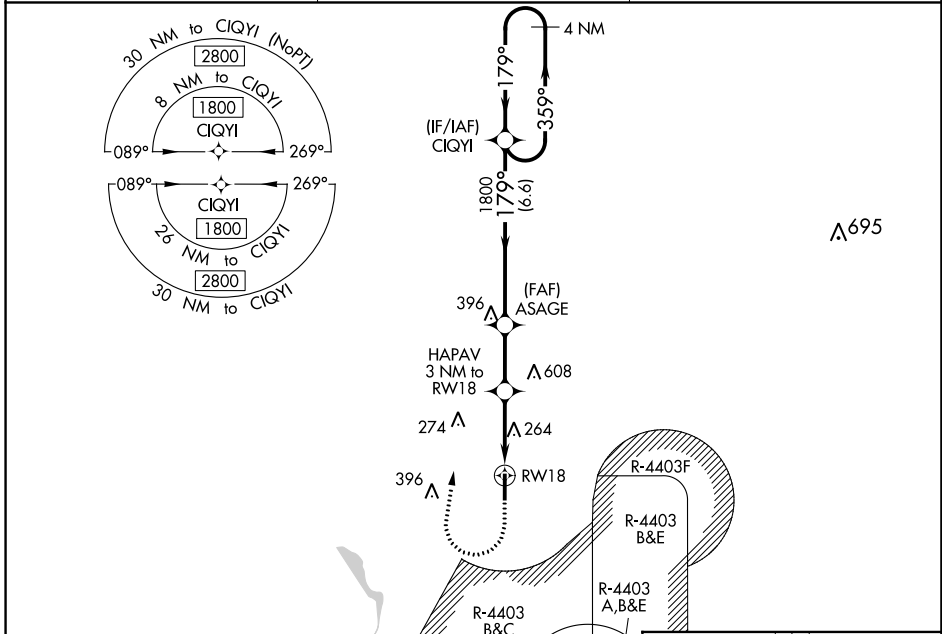
RNAV (GPS) Z RWY 18

PICAYUNE MUNI (MJJD)

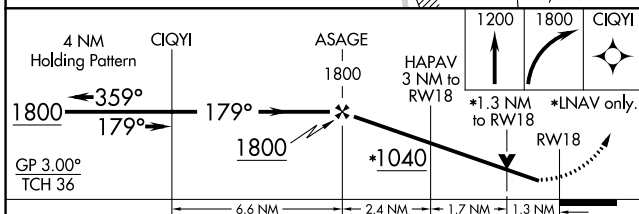
⚠ For uncompensated Baro-VNAV systems, LNAV/VNAV NA below -15°C (5°F) or above 54°C (130°F). Baro-VNAV and VDP NA when using Stennis Intl altimeter setting. DME/DME RNP-0.3 NA. Helicopter visibility reduction below 3/4 SM NA. Procedure NA when R-4403 B, C, or E is active. When local altimeter setting not received, used Stennis Intl altimeter setting; increase LPV DA to 377 and visibility all Cats 1/8 mile; increase LNAV/VNAV DA to 621 and visibility all Cats 1/8 mile; increase all MDA 40 feet and Circling Cat C visibility 1/4 mile.

MISSED APPROACH: Climb to 1200, then climbing right turn to 1800 direct CIQYI and hold.

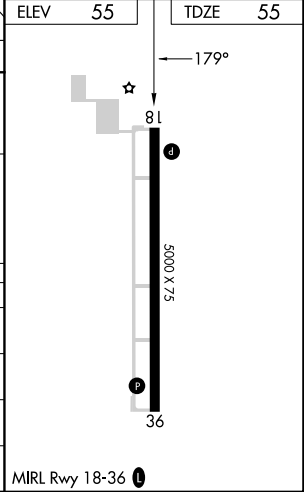
AWOS-3PT 119.075	GULFPORT APP CON* 124.6 354.1	UNICOM 122.8 (CTAF) 0
----------------------------	---	---------------------------------



ELEV 55	TDZE 55
---------	---------



CATEGORY	A	B	C	D
LPV DA	343-1		288 (300-1)	
LNAV/VNAV DA	587-1 7/8		532 (600-1 7/8)	
LNAV MDA	520-1	465 (500-1)	520-1 3/8	465 (500-1 3/8)
C CIRCLING	520-1 465 (500-1)	580-1 525 (600-1)	700-1 3/4 645 (700-1 3/4)	960-3 905 (1000-3)



SC-4, 22 FEB 2024 to 21 MAR 2024

SC-4, 22 FEB 2024 to 21 MAR 2024

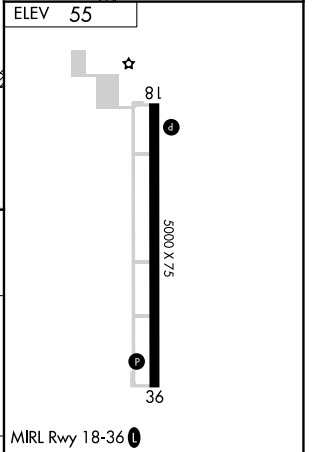
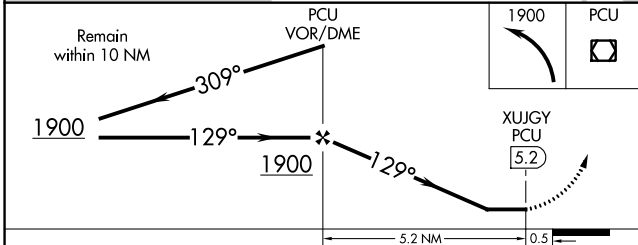
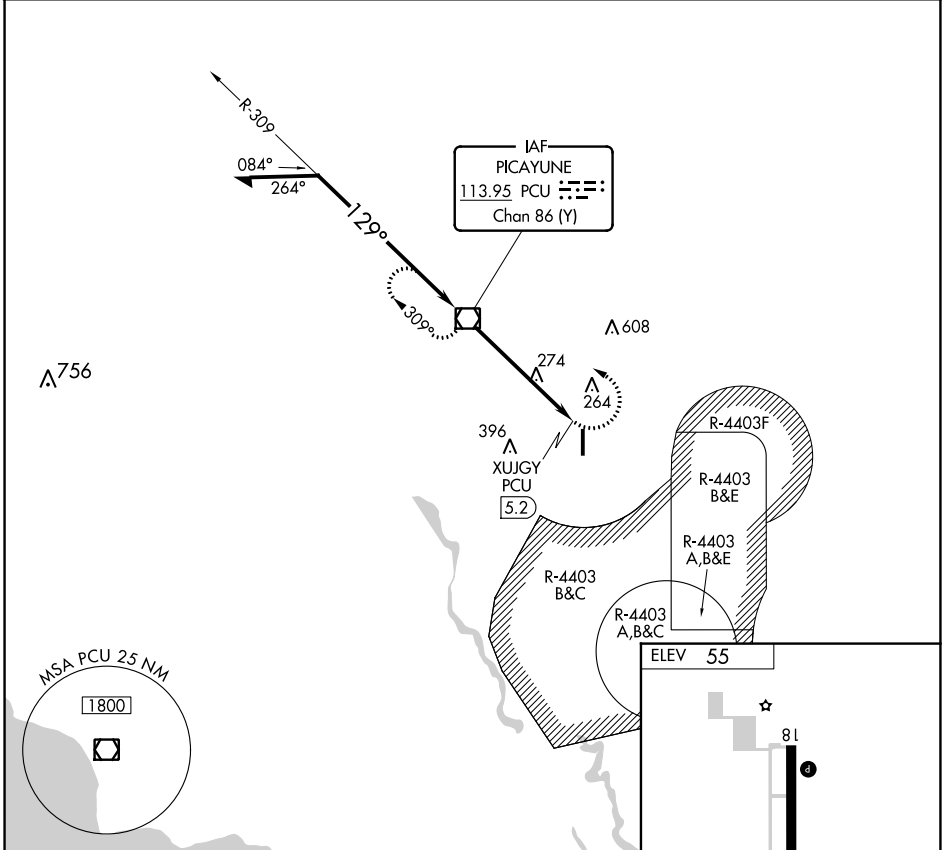
VOR/DME PCU 113.95 Chan 86 (Y)	APP CRS 129°	Rwy Idg TDZE Apt Elev	5000 N/A 55
---	------------------------	-----------------------------	--

VOR-A
PICAYUNE MUNI (MJD)

⚠ When local altimeter setting not received, use Stennis Intl altimeter setting and increase all MDA 40 feet.

MISSED APPROACH: Climbing left turn to 1900 direct PCU VOR/DME and hold.

AWOS-3PT 119.075	GULFPORT APP CON* 124.6 354.1	UNICOM 122.8 (CTAF) 0
----------------------------	---	--



CATEGORY	A	B	C	D	FAF to MAP 5.2 NM					
CIRCLING	540-1	580-1	NA		Knots	60	90	120	150	180
	485 (500-1)	525 (600-1)			Min:Sec	5:12	3:28	2:36	2:05	1:44