

NOTE: Chart not to scale.



BOSTON CENTER  
135.32 360.6  
BOSTON APP CON  
134.75 254.25  
ATIS  
119.55  
MANCHESTER TOWER  
121.3 239.025

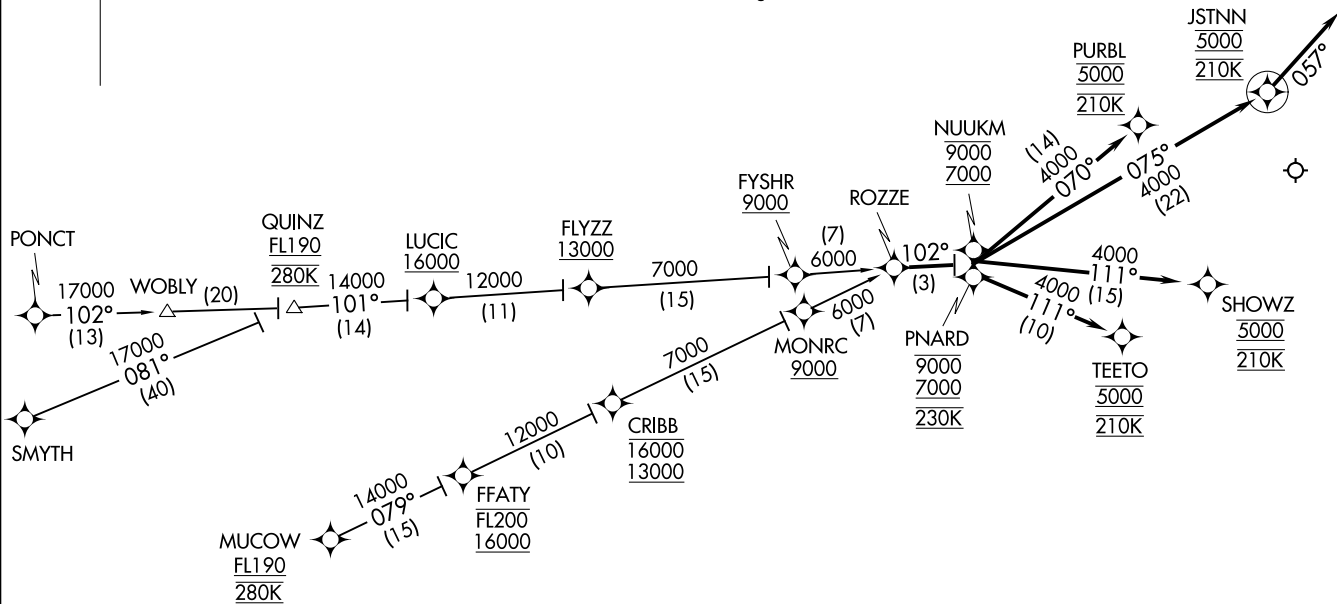
ROZZE TWO ARRIVAL (RNAV)  
(ROZZE,ROZZE2) 17AUG17

MANCHESTER, NEW HAMPSHIRE  
MANCHESTER (MHT)



NOTE: RADAR required.  
NOTE: RNAV 1.  
NOTE: DME/DME/IRU or GPS required.  
NOTE: Turbojet aircraft only.  
NOTE: MUCOW and CRIBB transitions are ATC assigned.

BOSTON CENTER  
135.32 360.6  
BOSTON APP CON  
124.9 269.075  
ATIS  
119.55  
MANCHESTER TOWER  
121.3 239.025



(ROZZE,ROZZE2) 20198  
ROZZE TWO ARRIVAL (RNAV)

AL-246 (FAA)

MANCHESTER, NEW HAMPSHIRE  
MANCHESTER (MHT)

NOTE: Chart not to scale.

(NARRATIVE ON FOLLOWING PAGE)

ARRIVAL ROUTE DESCRIPTION

CRIBB TRANSITION (CRIBB.ROZZE2)

MUCOW TRANSITION (MUCOW.ROZZE2)

PONCT TRANSITION (PONCT.ROZZE2)

QUINZ TRANSITION (QUINZ.ROZZE2)

SMYTH TRANSITION (SMYTH.ROZZE2)

Landing Rwy 6: From ROZZE on track 102° to cross PNARD between 7000 and 9000 and at 230K, then on track 111° to cross TEETO at 5000 and at 210K. Expect ILS or LOC Rwy 6 or radar vectors to final approach course.

Landing Rwy 17: From ROZZE on track 102° to cross NUUKM between 7000 and 9000, then on track 070° to cross PURBL at 5000 and at 210K. Expect RNP approach or ILS or LOC/DME Rwy 17 or radar vectors to final approach course.

Landing Rwy 24: From ROZZE on track 102° to cross NUUKM between 7000 and 9000, then on track 075° to cross JSTNN at 5000 and at 210K, then on heading 057°. Expect radar vectors to final approach course.

Landing Rwy 35: From ROZZE on track 102° to cross NUUKM between 7000 and 9000, then on track 111° to cross SHOWZ at 5000 and at 210K. Expect RNP approach or ILS or LOC Rwy 35 or radar vectors to final approach course.

NE-1, 10 SEP 2020 to 08 OCT 2020

NE-1, 10 SEP 2020 to 08 OCT 2020