

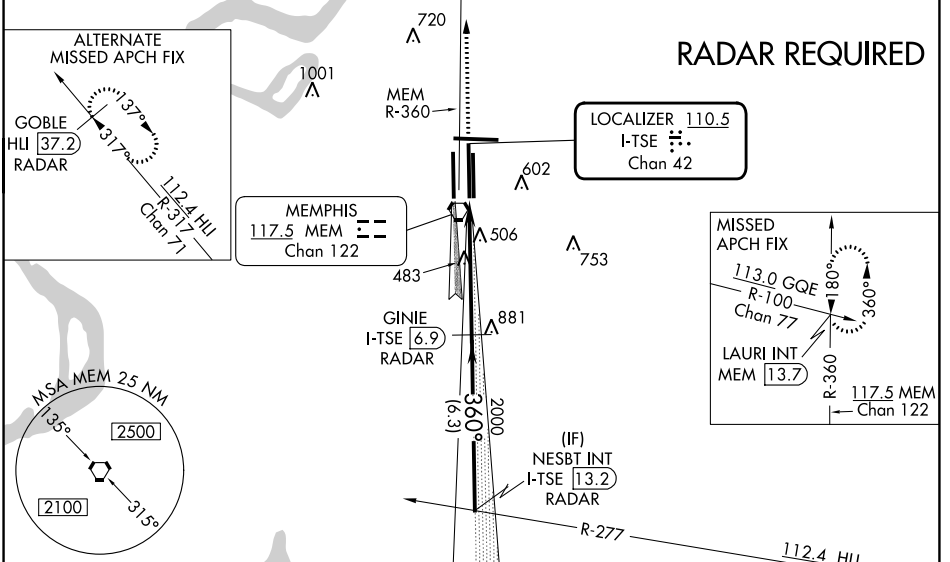
LOC/DME I-TSE 110.5 Chan 42	APP CRS 360°	Rwy Idg 10715 TDZE 341 Apt Elev 341
---	------------------------	--

ILS RWY 36C (CAT II & III)

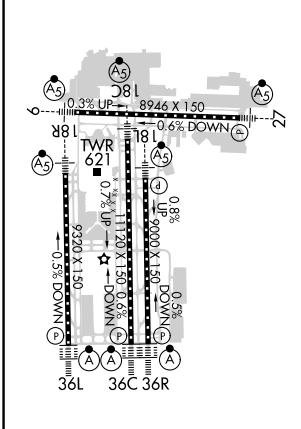
MEMPHIS INTL (MEM)

MEMPHIS APP CON 119.1 291.6 (176°-355°) 125.8 338.3 (356°-175°)	MEMPHIS TOWER (Rwy 9-27) 118.3 257.8 (Rwys 18C-36C, 18L-36R) 119.7 257.8 (Rwy 18R-36L) 128.425 257.8	GND CON (Rwy 9-27) 121.0 379.2 (Rwys 18C-36C, 18L-36R) 121.9 379.2 (Rwy 18R-36L) 121.65 379.2
	DME or RADAR required. Simultaneous approach authorized with Rwy 36L.	

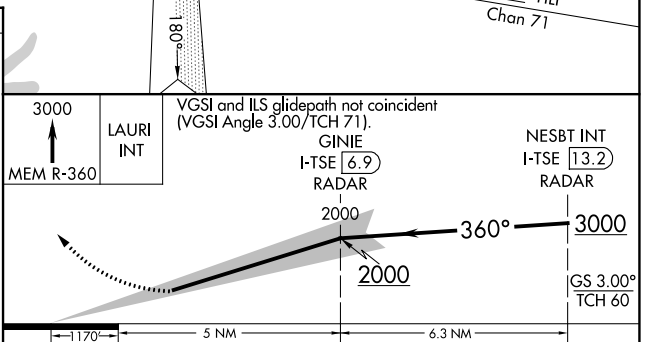
D-ATIS 127.75	1337 Δ	Δ 1450	CINC DEL 125.2	CPDLC
-------------------------	---------------	---------------	--------------------------	-------



ELEV 341	D	TDZE 341
-----------------	----------	-----------------



TDZ/CL Rwys 18L, 18C, 18R, 36R, 36C, and 36L
HIRL all Rwys



CATEGORY	A	B	C	D
S-ILS 36C	CAT II RA 118/12 100 DA 441			
S-ILS 36C	CAT IIIa		RVR 07	
S-ILS 36C	CAT IIIb		RVR 03	
S-ILS 36C	CAT IIIc		NA	

CATEGORY II & III ILS - SPECIAL AIRCREW & AIRCRAFT CERTIFICATION REQUIRED

SE-1, 22 FEB 2024 to 21 MAR 2024

SE-1, 22 FEB 2024 to 21 MAR 2024

LOC/DME I-OHN 108.9 Chan 26	APP CRS 360°	Rwy Idg 9320 TDZE 321 Apt Elev 341
--	------------------------	---

ILS RWY 36L (CAT II & III)

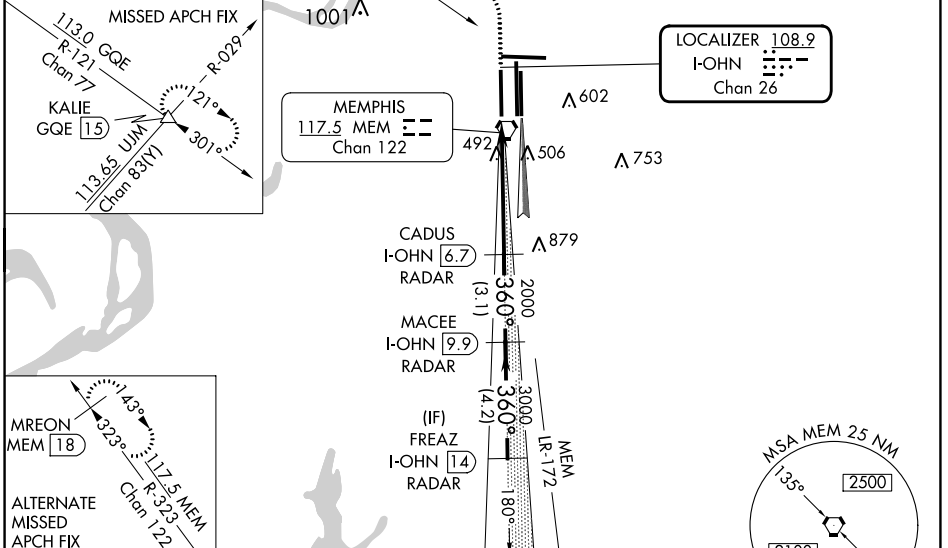
MEMPHIS INTL (MEM)

Simultaneous approach authorized with Rwy 36C/R.
DME or RADAR required.

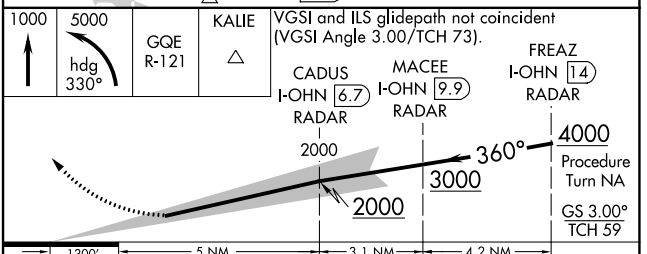
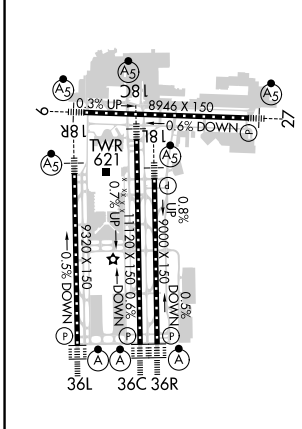
MISSED APPROACH: Climb to 1000 then climbing left turn to 5000 via heading 330° and GQE VOR/DME R-121 to KALIE INT/GQE 15 DME and hold, continue climb-in-hold to 5000.

MEMPHIS APP CON 119.1 291.6 (176°-355°) 125.8 338.3 (356°-175°)	MEMPHIS TOWER (Rwy 9-27) 118.3 257.8 (Rwys 18C-36C, 18L-36R) 119.7 257.8 (Rwy 18R-36L) 128.425 257.8	GND CON (Rwy 9-27) 121.0 379.2 (Rwys 18C-36C, 18L-36R) 121.9 379.2 (Rwy 18R-36L) 121.65 379.2
---	--	---

D-ATIS 127.75	113.0 GQE Chan 77	R-121	Λ 720	CLNC DEL 125.2	CPDLC
-------------------------	-------------------	-------	-------	--------------------------	-------



ELEV 341	D	TDZE 321
----------	----------	----------



CATEGORY	A	B	C	D
S-ILS 36L	CAT II RA 100/12 100 DA 421			
S-ILS 36L	CAT IIIa	RVR 07		
S-ILS 36L	CAT IIIb	RVR 03		
S-ILS 36L	CAT IIIc	NA		

CATEGORY II & III ILS - SPECIAL AIRCREW & AIRCRAFT CERTIFICATION REQUIRED

SE-1, 22 FEB 2024 to 21 MAR 2024

SE-1, 22 FEB 2024 to 21 MAR 2024

LOC/DME I-MYO 111.35 Chan 50 (Y)	APP CRS 360°	Rwy Idg TDZE Apt Elev	9000 335 341
---	------------------------	-----------------------------	---

ILS RWY 36R (CAT II & III)

MEMPHIS INTL (MEM)

⚠ Simultaneous approach authorized with Rwy 36L.
DME or RADAR required.

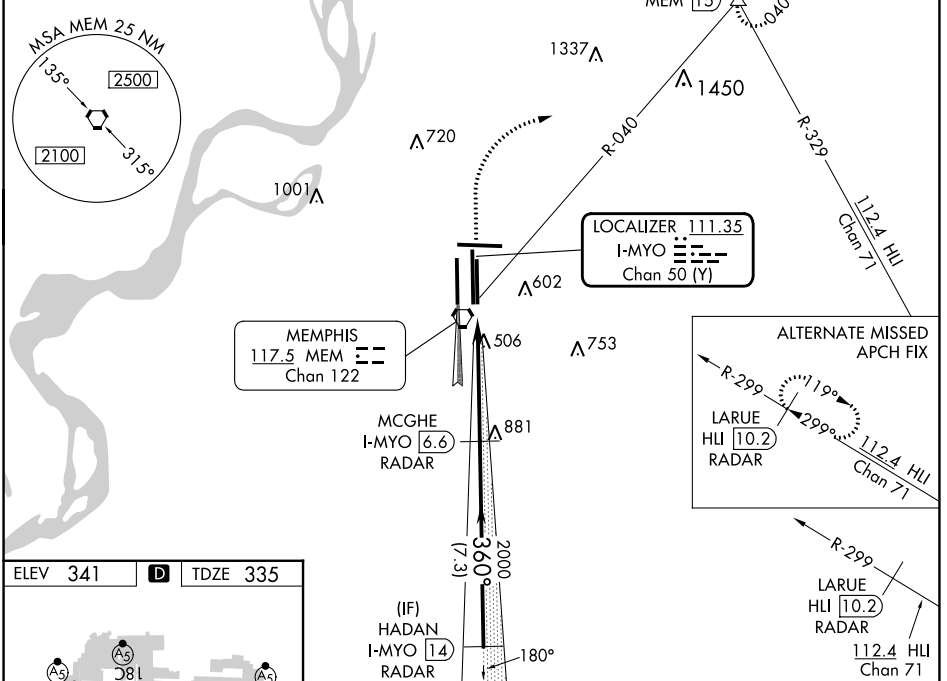


MISSED APPROACH: Climb to 1000 then climbing right turn to 5000 via heading 070° and MEM VORTAC R-040 to OROCU INT/MEM VORTAC 1.5 DME and hold, continue climb-in-hold to 5000.

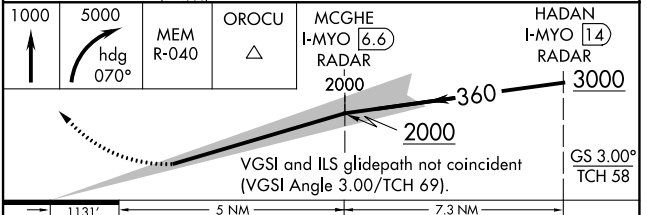
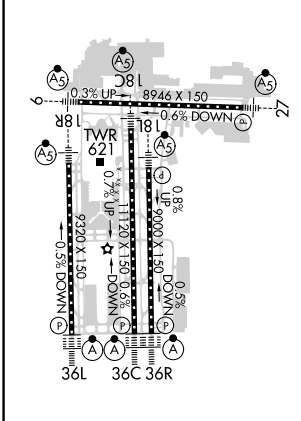
MEMPHIS APP CON 119.1 291.6 (176°-355°) 125.8 338.3 (356°-175°)	MEMPHIS TOWER (Rwy 9-27) 118.3 257.8 (Rwys 18C-36C, 18L-36R) 119.7 257.8 (Rwy 18R-36L) 128.425 257.8	GND CON (Rwy 9-27) 121.0 379.2 (Rwys 18C-36C, 18L-36R) 121.9 379.2 (Rwy 18R-36L) 121.65 379.2	CLNC DEL 125.2
---	--	---	--------------------------

D-ATIS
127.75

RADAR REQUIRED



ELEV 341	D	TDZE 335
----------	----------	----------



1131'	5 NM	7.3 NM		
CATEGORY	A	B	C	D
S-ILS 36R	CAT II RA 109/12 100 DA 435			
S-ILS 36R	CAT IIIa RVR07			
S-ILS 36R	CAT IIIb RVR03			
S-ILS 36R	CAT IIIc NA			

CATEGORY II & III ILS - SPECIAL AIRCREW & AIRCRAFT CERTIFICATION REQUIRED

SE-1, 22 FEB 2024 to 21 MAR 2024

SE-1, 22 FEB 2024 to 21 MAR 2024

LOC I-SDU 111.95	APP CRS 180°	Rwy ldg 11120 TDZE 290 Apt Elev 341
----------------------------	------------------------	--

ILS or LOC RWY 18C

MEMPHIS INTL (MEM)

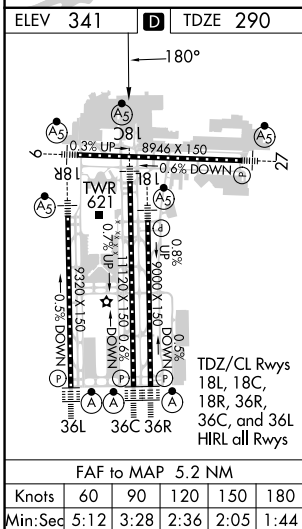
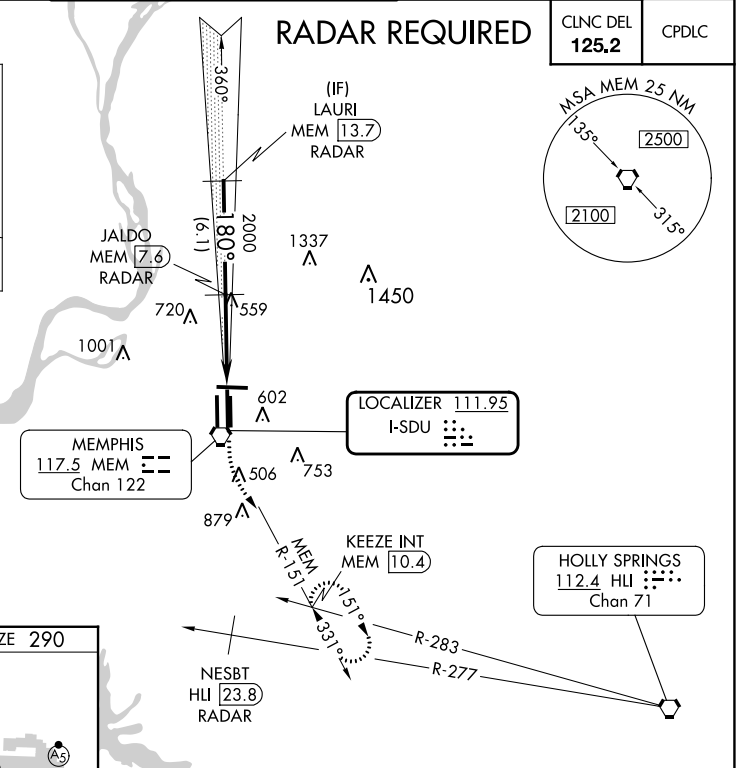
<p>Simultaneous approach authorized.</p> <p>DME or RADAR required.</p> <p>For inop ALS, increase S-ILS 18C all Cats visibility to 1½ SM.</p>	<p>MALSR</p>	<p>MISSED APPROACH: Climb to 900 then climbing left turn to 5000 on MEM VORTAC R-151 to KEEZE INT/MEM 10.4 DME and hold, continue climb-in-hold to 5000.</p>
--	--------------	--

MEMPHIS APP CON	MEMPHIS TOWER	GND CON
119.1 291.6 (176°-355°)	(Rwy 9-27) 118.3 257.8	(Rwy 9-27) 121.0 379.2
125.8 338.3 (356°-175°)	(Rwys 18C-36C, 18L-36R) 119.7 257.8	(Rwys 18C-36C, 18L-36R) 121.9 379.2
	(Rwy 18R-36L) 128.425 257.8	(Rwy 18R-36L) 121.65 379.2

D-ATIS 127.75	CLNC DEL 125.2	CPDLC
-------------------------	--------------------------	-------

ALTERNATE MISSED APCH FIX

NESBT
HLI **23.8**
RADAR



	LAURI MEM 13.7 RADAR	JALDO MEM 7.6 RADAR	900	5000	KEEZE INT
	3000	2000	↑	MEM R-151	
GS 3.00° TCH 54	180°	2000			
	6.1 NM	5.2 NM			
CATEGORY	A	B	C	D	E
S-ILS 18C	657/40 367 (400-¾)				
S-LOC 18C	860/24	570 (600-½)	860/50 570 (600-1)	860/60 570 (600-¼)	860-1½ 570 (600-1½)
CIRCLING	940-1	599 (600-1)	940-1½ 599 (600-1½)	1020-2¼ 679 (700-2¼)	1140-2¾ 799 (800-2¾)

LOC/DME I-EXS 111.15	APP CRS 180°	Rwy Idg 9000
Chan 48(Y)		TDZE 301
		Apt Elev 341

ILS or LOC RWY 18L

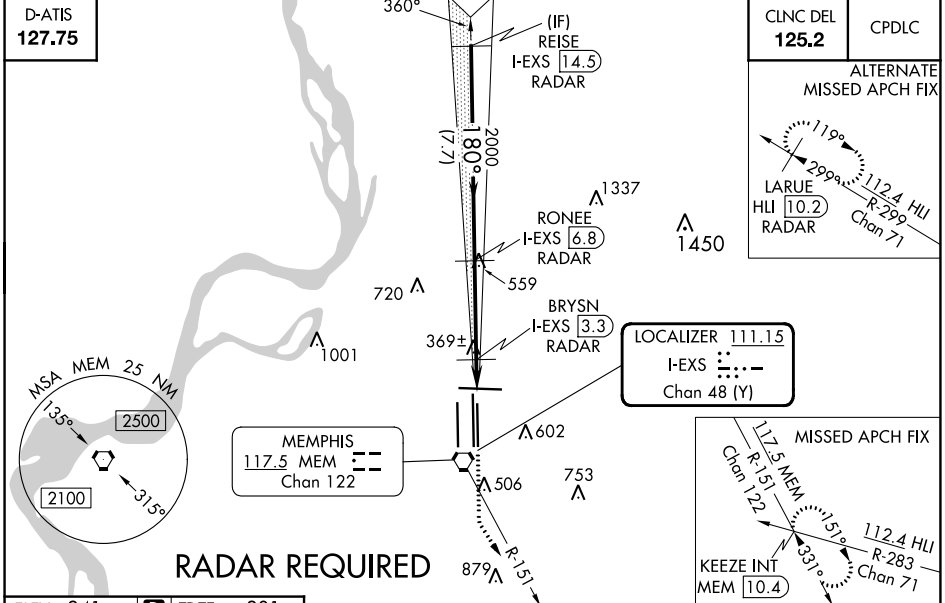
MEMPHIS INTL (MEM)

⚠ Simultaneous approach authorized. DME or RADAR required.
 For inop ALS, increase S-ILS 18L Cat E visibility to RVR 4000, S-LOC 18L Cat E visibility to 1 3/4 SM, BRYSN fix minimums, increase S-LOC 18L Cats D and E visibility to RVR 5000.

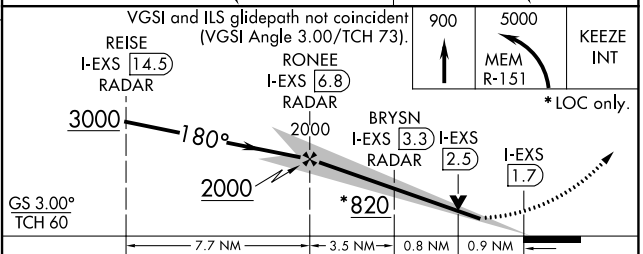
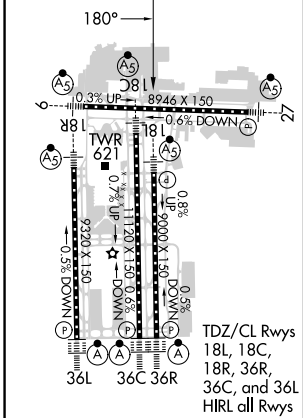
MALSR


MISSED APPROACH: Climb to 900 then climbing left turn to 5000 on MEM VORTAC R-151 to KEEZE INT/MEM 10.4 DME and hold, continue climb-in-hold to 5000.

MEMPHIS APP CON 119.1 291.6 (176°-355°) 125.8 338.3 (356°-175°)	MEMPHIS TOWER (Rwy 9-27) 118.3 257.8 (Rwys 18C-36C, 18L-36R) 119.7 257.8 (Rwy 18R-36L) 128.425 257.8	GND CON (Rwy 9-27) 121.0 379.2 (Rwys 18C-36C, 18L-36R) 121.9 379.2 (Rwy 18R-36L) 121.65 379.2
---	--	---



ELEV 341	D	TDZE 301
-----------------	----------	-----------------



CATEGORY	A	B	C	D	E
S-ILS 18L	501/18 200 (200-1/2)				501/24 200 (200-1/2)
S-LOC 18L	820/24	519 (500-1/2)	820/50 519 (500-1)	820/60	519 (500-1/4)
CIRCLING	940-1	599 (600-1)	940-1 1/2 599 (600-1 1/2)	1020-2 1/4 679 (700-2 1/4)	1140-2 3/4 799 (800-2 3/4)
BRYSN FIX MINIMUMS					
S-LOC 18L	620/24 319 (300-1/2)		620/40 319 (300-3/4)		
CIRCLING	940-1	599 (600-1)	940-1 1/2 599 (600-1 1/2)	1020-2 1/4 679 (700-2 1/4)	1140-2 3/4 799 (800-2 3/4)

SE-1, 22 FEB 2024 to 21 MAR 2024

SE-1, 22 FEB 2024 to 21 MAR 2024

LOC I-OOI 109.9	APP CRS 180°	Rwy ldg 9320
		TDZE 295
		Apt Elev 341

ILS or LOC RWY 18R

MEMPHIS INTL (MEM)

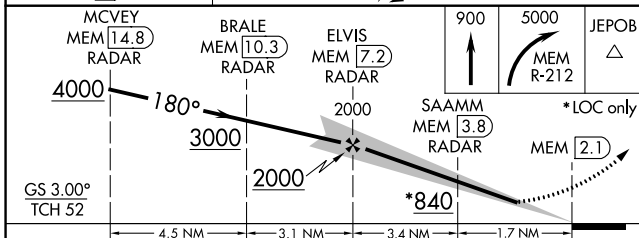
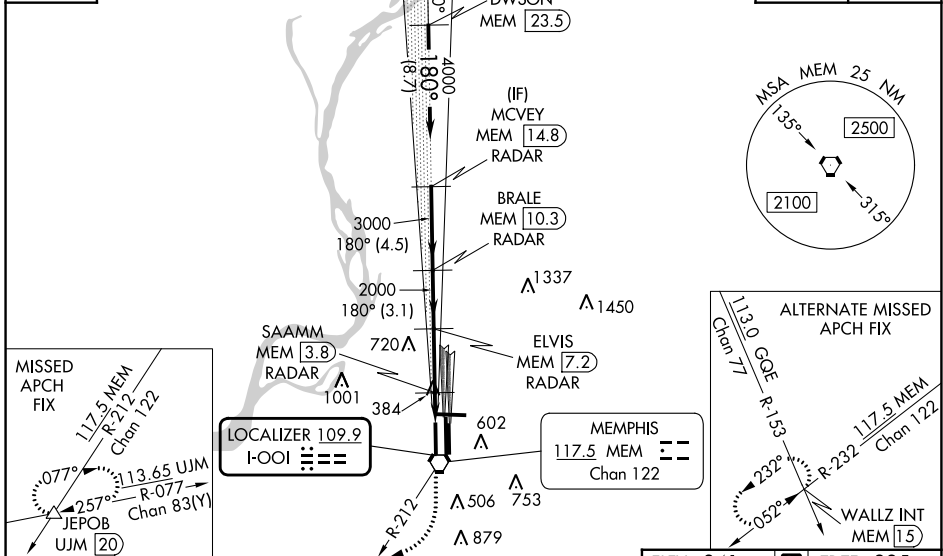
Radar required for procedure entry, DME or RADAR required.

▼ Simultaneous approach authorized. For inop ALS, increase S-ILS 18R Cat E visibility to RVR 4000, S-LOC 18R Cat E visibility to 2 SM, SAAMM fix minimums, increase S-LOC 18R Cat E visibility to 1½ SM.

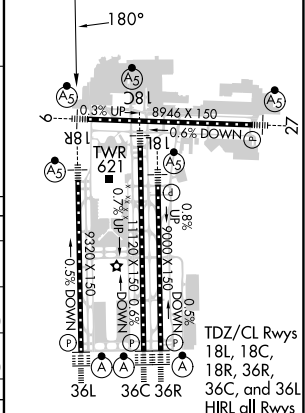
▲ MALSR MISSED APPROACH: Climb to 900 then climbing right turn to 5000 on MEM VORTAC R-212 to JEPOB INT/UJM 20 DME and hold.

MEMPHIS APP CON		MEMPHIS TOWER		GND CON	
119.1 291.6	(176°-355°)	(Rwy 9-27)	118.3 257.8	(Rwy 9-27)	121.0 379.2
125.8 338.3	(356°-175°)	(Rwys 18C-36C, 18L-36R)	119.7 257.8	(Rwys 18C-36C, 18L-36R)	121.9 379.2
		(Rwy 18R-36L)	128.425 257.8	(Rwy 18R-36L)	121.65 379.2

D-ATIS 127.75	1486 ▲	CLNC DEL 125.2	CPDLC
-------------------------	---------------	--------------------------	-------



ELEV 341	D	TDZE 295
----------	----------	----------



CATEGORY	A	B	C	D	E
S-ILS 18R	495/18 200 (200-½)				495/24 200 (200-½)
S-LOC 18R	840/24	545 (500-½)	840/50 545 (500-1)	840/60 545 (500-1¼)	840-1½ 545 (500-1½)
C CIRCLING	940-1	599 (600-1)	940-1½ 599 (600-1½)	1020-2¼ 679 (700-2¼)	1140-2¾ 799 (800-2¾)
SAAMM FIX MINIMUMS (DME OR RADAR REQUIRED)					
S-LOC 18R	700/24	405 (400-½)	700/40 405 (400-¾)	700/50 405 (400-1)	
C CIRCLING	940-1	599 (600-1)	940-1½ 599 (600-1½)	1020-2¼ 679 (700-2¼)	1140-2¾ 799 (800-2¾)

FAF to MAP 5.1 NM					
Knots	60	90	120	150	180
Min:Sec	5:06	3:24	2:33	2:02	1:42

SE-1, 22 FEB 2024 to 21 MAR 2024

SE-1, 22 FEB 2024 to 21 MAR 2024

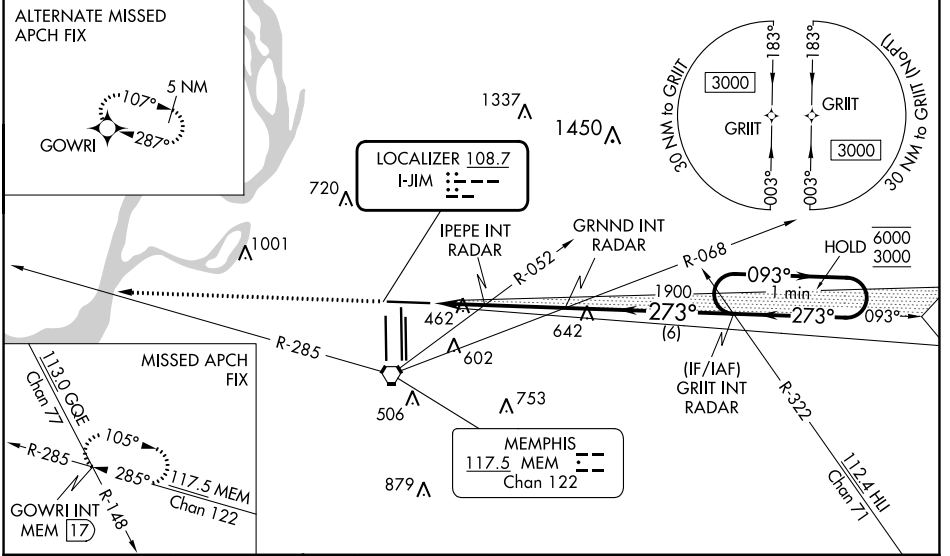
LOC I-JIM 108.7	APP CRS 273°	Rwy Idg TDZE Apt Elev	8946 292 341
---------------------------	------------------------	-----------------------------	---

ILS or LOC RWY 27

MEMPHIS INTL (MEM)

RNAV 1-GPS or RADAR required for procedure entry.		MALSR	MISSED APPROACH: Climb to 5000 and intercept MEM VORTAC R-285 to GOWRI INT/17 DME and hold, continue climb-in-hold to 5000.
<p>▼ For inop ALS, increase S-ILS Cat E visibility to RVR 4000, and S-LOC Cat E visibility to 2 SM, IPEPE fix minimums S-LOC Cat E visibility to 1/4 SM.</p> <p>▲ *RVR 1800 authorized with use of FD or AP or HUD to DA.</p>			
MEMPHIS APP CON		MEMPHIS TOWER	GND CON
119.1 291.6 (176°-355°)	(Rwy 9-27)	118.3 257.8	(Rwy 9-27)
125.8 338.3 (356°-175°)	(Rwys 18C-36C, 18L-36R)	119.7 257.8	(Rwys 18C-36C, 18L-36R)
	(Rwy 18R-36L)	128.425 257.8	(Rwy 18R-36L)
			121.0 379.2
			121.9 379.2
			121.65 379.2

D-ATIS 127.75	CLNC DEL 125.2	CPDLC
-------------------------	--------------------------	-------



ELEV 341	D	TDZE 292	5000	MEM R-285	GOWRI INT	GRND INT RADAR	GRIT INT RADAR	One Minute Holding Pattern																																										
				<p>VGSI and ILS glidepath not coincident (VGSI Angle 3.00/TCH 69).</p> <p>GS 3.00° TCH 54</p>																																														
				<table border="1"> <thead> <tr> <th>CATEGORY</th> <th>A</th> <th>B</th> <th>C</th> <th>D</th> <th>E</th> </tr> </thead> <tbody> <tr> <td>S-ILS 27 *</td> <td colspan="5">492/24 200 (200-1/2)</td> </tr> <tr> <td>S-LOC 27</td> <td>980/24</td> <td>688 (700-1/2)</td> <td colspan="3">980-1 1/2 688 (700-1 1/2)</td> </tr> <tr> <td>C CIRCLING</td> <td>980-1</td> <td>639 (700-1)</td> <td>980-2</td> <td>1020-2 1/4</td> <td>1140-2 3/4</td> </tr> <tr> <td colspan="6">IPEPE FIX MINIMUMS (DUAL VOR RECEIVERS OR RADAR REQUIRED)</td> </tr> <tr> <td>S-LOC 27</td> <td>720/24</td> <td>428 (400-1/2)</td> <td colspan="3">720/40 428 (400-3/4)</td> </tr> <tr> <td>C CIRCLING</td> <td>940-1</td> <td>599 (600-1)</td> <td>940-1 1/2</td> <td>1020-2 1/4</td> <td>1140-2 3/4</td> </tr> </tbody> </table>					CATEGORY	A	B	C	D	E	S-ILS 27 *	492/24 200 (200-1/2)					S-LOC 27	980/24	688 (700-1/2)	980-1 1/2 688 (700-1 1/2)			C CIRCLING	980-1	639 (700-1)	980-2	1020-2 1/4	1140-2 3/4	IPEPE FIX MINIMUMS (DUAL VOR RECEIVERS OR RADAR REQUIRED)						S-LOC 27	720/24	428 (400-1/2)	720/40 428 (400-3/4)			C CIRCLING	940-1	599 (600-1)	940-1 1/2	1020-2 1/4	1140-2 3/4
CATEGORY	A	B	C	D	E																																													
S-ILS 27 *	492/24 200 (200-1/2)																																																	
S-LOC 27	980/24	688 (700-1/2)	980-1 1/2 688 (700-1 1/2)																																															
C CIRCLING	980-1	639 (700-1)	980-2	1020-2 1/4	1140-2 3/4																																													
IPEPE FIX MINIMUMS (DUAL VOR RECEIVERS OR RADAR REQUIRED)																																																		
S-LOC 27	720/24	428 (400-1/2)	720/40 428 (400-3/4)																																															
C CIRCLING	940-1	599 (600-1)	940-1 1/2	1020-2 1/4	1140-2 3/4																																													
<p>HIRL all Rwys TDZ/CL Rwys 18L, 18C, 18R, 36R, 36C, and 36L</p> <p>FAF to MAP 4.9 NM</p>				<table border="1"> <tr> <td>Knots</td> <td>60</td> <td>90</td> <td>120</td> <td>150</td> <td>180</td> </tr> <tr> <td>Min:Sec</td> <td>4:54</td> <td>3:16</td> <td>2:27</td> <td>1:58</td> <td>1:38</td> </tr> </table>					Knots	60	90	120	150	180	Min:Sec	4:54	3:16	2:27	1:58	1:38																														
Knots	60	90	120	150	180																																													
Min:Sec	4:54	3:16	2:27	1:58	1:38																																													

SE-1, 22 FEB 2024 to 21 MAR 2024

SE-1, 22 FEB 2024 to 21 MAR 2024

LOC/DME I-OHN 108.9 Chan 26	APP CRS 360°	Rwy Idg 9320 TDZE 321 Apt Elev 341
---	------------------------	---

ILS or LOC RWY 36L

MEMPHIS INTL (MEM)

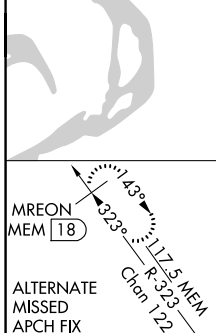
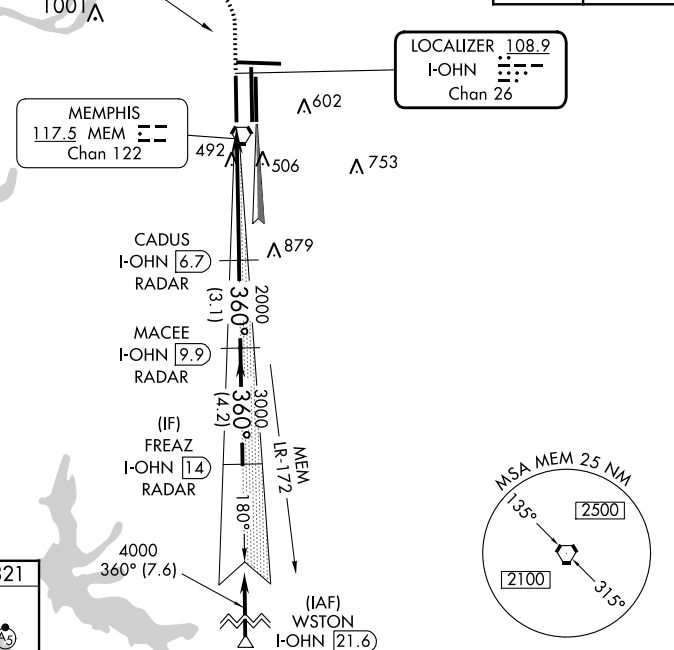
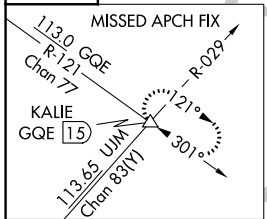
⚠ Simultaneous approach authorized with Rwy 36C/R.
⚠ For inoperative ALSF, increase S-ILS 36L Cat E visibility to RVR 4000, and S-LOC 36L Cat E visibility to 1½. DME or RADAR required.



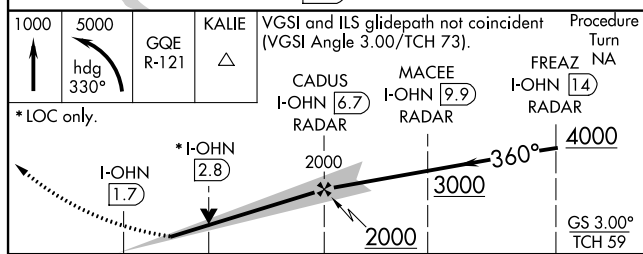
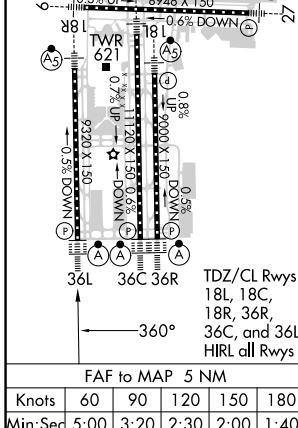
MISSED APPROACH: Climb to 1000 then climbing left turn to 5000 via heading 330° and GQE VOR/DME R-121 to KALIE INT/GQE 15 DME and hold, continue climb-in-hold to 5000.

MEMPHIS APP CON 119.1 291.6 (176°-355°) 125.8 338.3 (356°-175°)	MEMPHIS TOWER (Rwy 9-27) 118.3 257.8 (Rwys 18C-36C, 18L-36R) 119.7 257.8 (Rwy 18R-36L) 128.425 257.8	GND CON (Rwy 9-27) 121.0 379.2 (Rwys 18C-36C, 18L-36R) 121.9 379.2 (Rwy 18R-36L) 121.65 379.2
---	--	---

D-ATIS 127.75	113.0 GQE Chan 77	R-121	Λ720	CLNC DEL 125.2	CPDLC
-------------------------	--------------------------	-------	------	--------------------------	-------



ELEV 341	D	TDZE 321
-----------------	----------	-----------------



CATEGORY	A	B	C	D	E
S-ILS 36L	521/18		200 (200-½)	521/24 200 (200-½)	
S-LOC 36L	760/24	439 (500-½)	760/40 439 (500-¾)	760/50	439 (500-1)
C CIRCLING	940-1	599 (600-1)	940-1½ 599 (600-1½)	1020-2¼ 679 (700-2¼)	1140-2¾ 799 (800-2¾)

LOC/DME I-MYO 111.35 Chan 50 (Y)	APP CRS 360°	Rwy Idg TDZE Apt Elev	9000 335 341
---	------------------------	-----------------------------	---

ILS or LOC RWY 36R

MEMPHIS INTL (MEM)

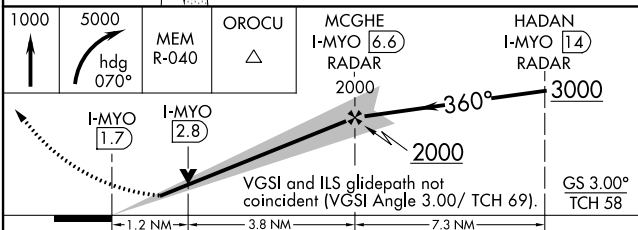
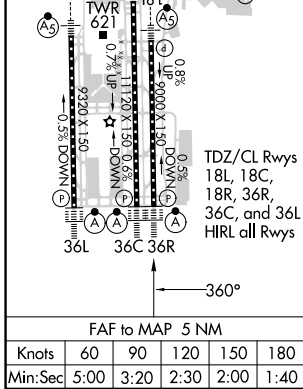
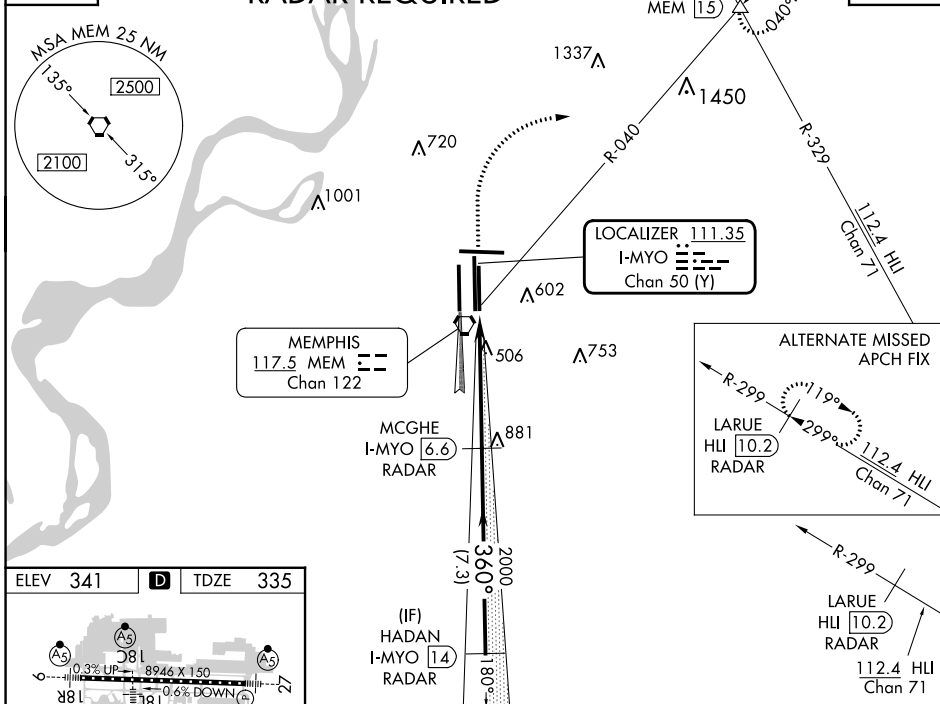
⚠ For inoperative ALSF, increase S-ILS 36R Cat E visibility to RVR 4000 and S-LOC 36R Cat E visibility to 1½. Simultaneous approach authorized with Rwy 36L. DME or RADAR required.

ALSF-2 MISSED APPROACH: Climb to 1000 then climbing right turn to 5000 via heading 070° and MEM VORTAC R-040 to OROCU INT/MEM VORTAC 1.5 DME and hold, continue climb-in-hold to 5000.

MEMPHIS APP CON 119.1 291.6 (176°-355°) 125.8 338.3 (356°-175°)	MEMPHIS TOWER (Rwy 9-27) 118.3 257.8 (Rwys 18C-36C, 18L-36R) 119.7 257.8 (Rwy 18R-36L) 128.425 257.8	GND CON (Rwy 9-27) 121.0 379.2 (Rwys 18C-36C, 18L-36R) 121.9 379.2 (Rwy 18R-36L) 121.65 379.2	CLNC DEL 125.2
---	--	---	--------------------------

D-ATIS **127.75** CPDLC

RADAR REQUIRED



CIRCLING	940-1	599 (600-1)	940-1½ 599 (600-1½)	1020-2¼ 679 (700-2¼)	1140-2¾ 799 (800-2¾)
----------	-------	-------------	------------------------	-------------------------	-------------------------

LOC I-MEM	APP CRS	Rwy Idg	8946
109.5	093°	TDZE	259
		Apt Elev	341

ILS or LOC RWY 9

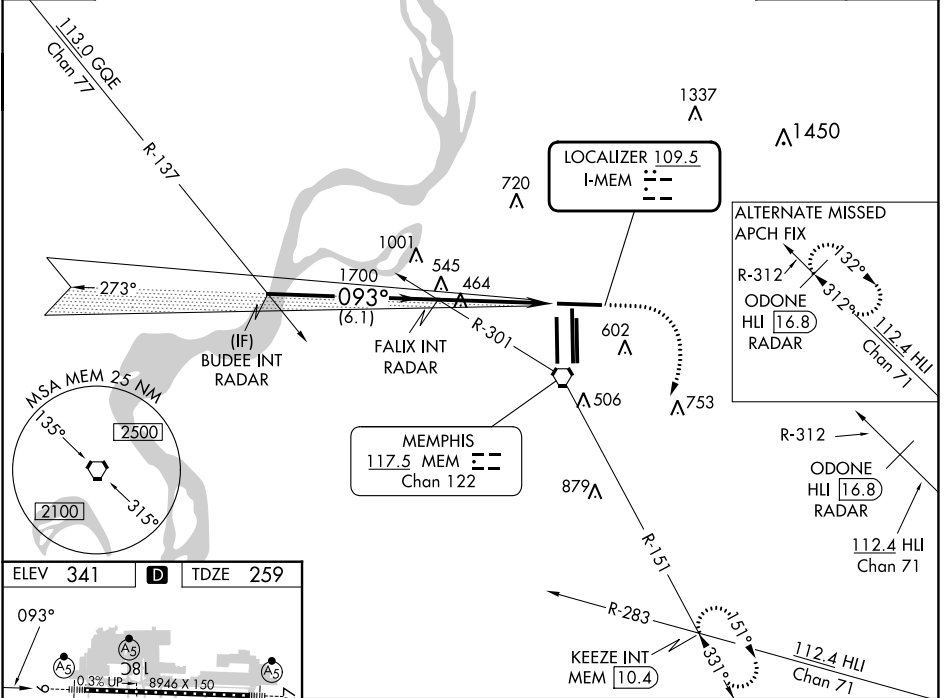
MEMPHIS INTL (MEM)

▼ For inop ALS, increase S-ILS 9 Cat E visibility to RVR 4000 and S-LOC 9 Cat E visibility to 1¾ SM.

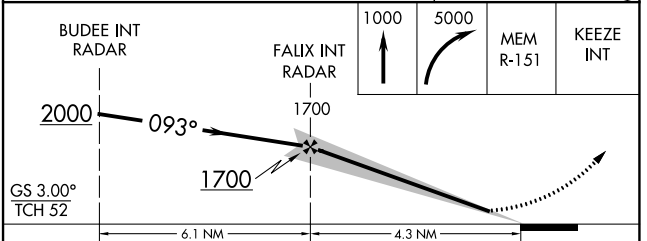
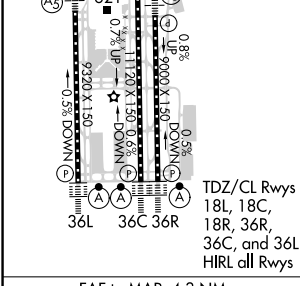
MALSR MISSED APPROACH: Climb to 1000 then climbing right turn to 5000 on MEM R-151 to KEEZE INT/MEM 10.4 DME and hold, continue climb-in-hold to 5000.

MEMPHIS APP CON	MEMPHIS TOWER	GND CON
119.1 291.6 (176°-355°)	(Rwy 9-27) 118.3 257.8	(Rwy 9-27) 121.0 379.2
125.8 338.3 (356°-175°)	(Rwys 18C-36C, 18L-36R) 119.7 257.8	(Rwys 18C-36C, 18L-36R) 121.9 379.2
	(Rwy 18R-36L) 128.425 257.8	(Rwy 18R-36L) 121.65 379.2

D-ATIS	127.75	RADAR REQUIRED	CLNC DEL	125.2	CPDLC
--------	---------------	-----------------------	----------	--------------	-------



ELEV	341	D	TDZE	259
------	------------	----------	------	------------



CATEGORY	A	B	C	D	E
S-ILS 9	466/24 207 (200-½)				
S-LOC 9	720/24 461 (400-½)	720/50 461 (400-1)	720/60 461 (400-1½)		
CIRCLING	940-1 599 (600-1)	940-1½ 599 (600-1½)	1020-2¼ 679 (700-2¼)	1140-2¾ 799 (800-2¾)	

SE-1, 22 FEB 2024 to 21 MAR 2024

SE-1, 22 FEB 2024 to 21 MAR 2024

WAAS CH 93607 W27A	APP CRS 273°	Rwy Idg TDZE Apt Elev	8946 292 341
--	------------------------	-----------------------------	---

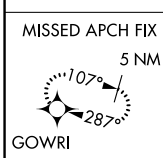
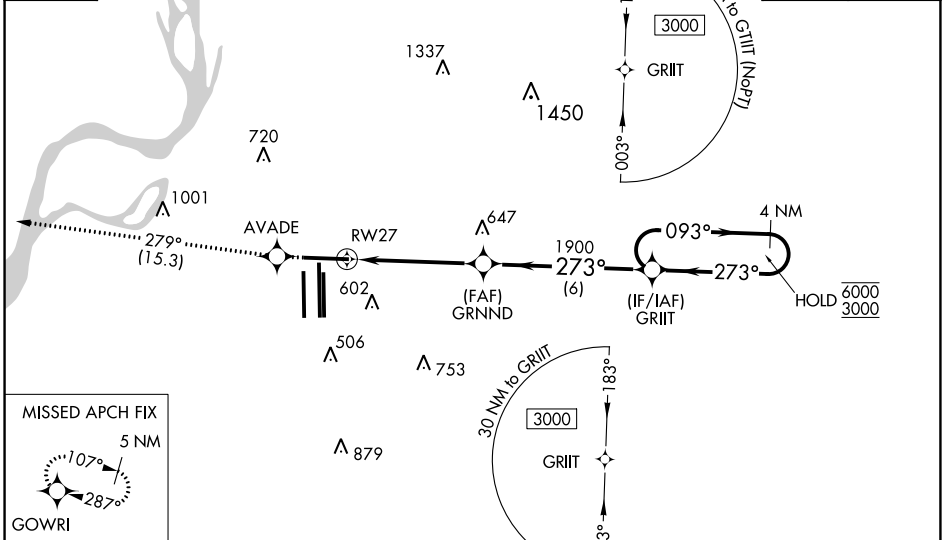
RNAV (GPS) RWY 27

MEMPHIS INTL (MEM)

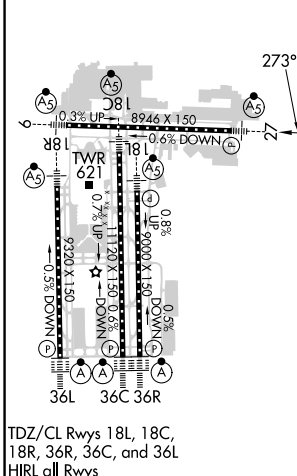
RNP APCH - GPS.	MALSR 	MISSED APPROACH: Climb to 5000 direct AVADE and on track 279° to GOWRI and hold, continue climb-in-hold to 5000.
<p>▼ For uncompensated Baro-VNAV systems, LNAV/VNAV NA below -9°C or above 54°C. For inop ALS, increase LNAV Cat C and D visibility to 1 3/8 SM.</p> <p>▲ *RVR 1800 authorized with use of FD or AP or HUD to DA.</p>		

MEMPHIS APP CON	MEMPHIS TOWER	GND CON
119.1 291.6 (176°-355°)	(Rwy 9-27) 118.3 257.8	(Rwy 9-27) 121.0 379.2
125.8 338.3 (356°-175°)	(Rwys 18C-36C, 18L-36R) 119.7 257.8	(Rwys 18C-36C, 18L-36R) 121.9 379.2
	(Rwy 18R-36L) 128.425 257.8	(Rwy 18R-36L) 121.65 379.2

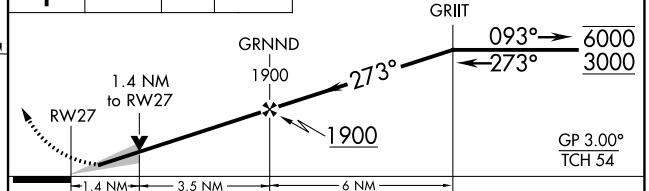
D-ATIS 127.75	CLNC DEL 125.2	CPDLC
-------------------------	--------------------------	-------



ELEV 341	D	TDZE 292
----------	----------	----------



5000	AVADE	tr 279°	GOWRI	VGSI and RNAV glidepath not coincident (VGSI Angle 3.00/TCH 69). 4 NM Holding Pattern
------	-------	---------	-------	---



CATEGORY	A	B	C	D
LPV DA *	492/24		200 (200-1/2)	
LNAV/VNAV DA	745/50		453 (500-1)	
LNAV MDA	800/24 508 (500-1/2)		800/55 508 (500-1)	
C CIRCLING	940-1 599 (600-1)		940-1 1/2 679 (700-2 1/4)	

SE-1, 22 FEB 2024 to 21 MAR 2024

SE-1, 22 FEB 2024 to 21 MAR 2024

WAAS CH 40407 W36B	APP CRS 360°	Rwy Idg TDZE 341 Apt Elev 341	10715
--	------------------------	---	--------------

RNAV (GPS) RWY 36C

MEMPHIS INTL (MEM)

RNP APCH.

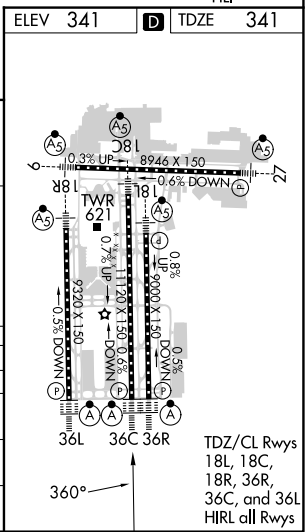
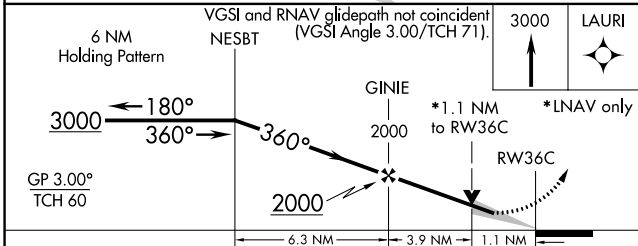
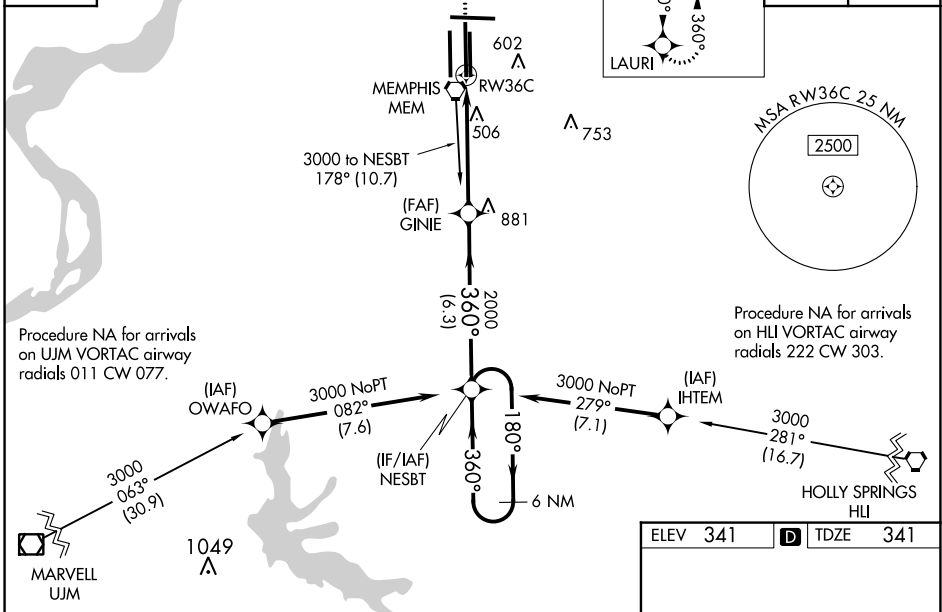
⚠ For uncompensated Baro-VNAV systems, LNAV/VNAV NA below -15°C or above 54°C. Simultaneous approach authorized. For inop ALS increase LPV all Cats visibility to RVR 5000, increase LNAV Cat D visibility to RVR 6000. LNAV procedure NA during simultaneous operations. Use of FD or AP required during simultaneous operations.

ALS-F-2

MISSED APPROACH: Climb to 3000 direct LAURI and hold.

MEMPHIS APP CON 119.1 291.6 (176°-355°) 125.8 338.3 (356°-175°)	MEMPHIS TOWER (Rwy 9-27) 118.3 257.8 (Rwys 18C-36C, 18L-36R) 119.7 257.8 (Rwy 18R-36L) 128.425 257.8	GND CON (Rwy 9-27) 121.0 379.2 (Rwys 18C-36C, 18L-36R) 121.9 379.2 (Rwy 18R-36L) 121.65 379.2
---	--	---

D-ATIS 127.75	MISSED APCH FIX LAURI 180° 360° 4 NM	CLNC DEL 125.2	CPDLC
-------------------------	--	--------------------------	-------



CATEGORY	A	B	C	D
LPV DA		665/24	324 (400-½)	
LNAV/VNAV DA		765/50	424 (500-1)	
LNAV MDA	760/24	419 (500-½)	760/40 419 (500-¾)	760/50 419 (500-1)
CIRCLING	940-1	599 (600-1)	940-1½ 599 (600-1½)	1020-2¼ 679 (700-2¼)

SE-1, 22 FEB 2024 to 21 MAR 2024

SE-1, 22 FEB 2024 to 21 MAR 2024

WAAS CH 65907 W36A	APP CRS 360°	Rwy Idg TDZE Apt Elev	9320 321 341
--	------------------------	-----------------------------	---

RNAV (GPS) RWY 36L

MEMPHIS INTL(MEM)

⚠ For uncompensated Baro-VNAV systems, LNAV/VNAV NA below -15°C (5°F) or above 48°C (118°F). Simultaneous approach authorized. DME/DME RNP-0.3 NA. LNAV procedure NA during simultaneous operations. Use of FD or AP required during simultaneous operations.

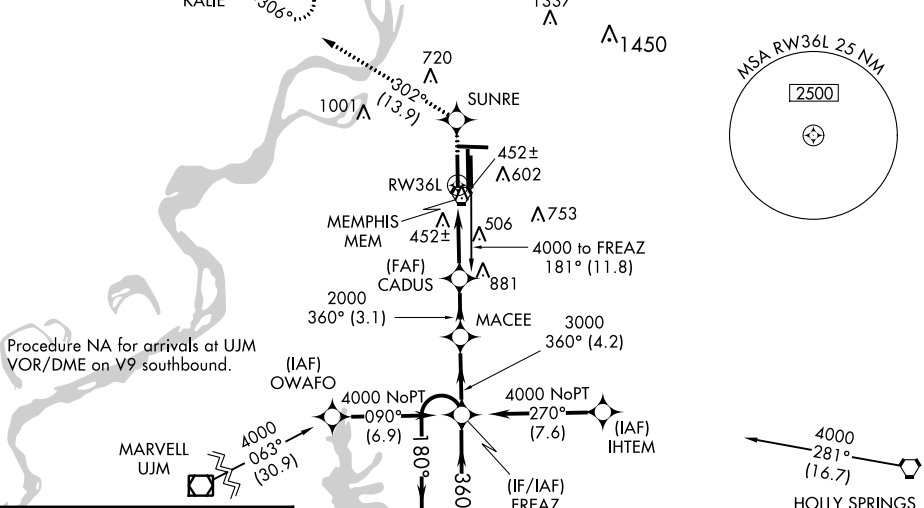
ALSF-2

MISSED APPROACH: Climb to 5000 direct SUNRE and on track 302° to KALIE and hold, continue climb-in-hold to 5000.

MEMPHIS APP CON	MEMPHIS TOWER	GND CON
119.1 291.6 (176°-355°)	(Rwy 9-27) 118.3 257.8	(Rwy 9-27) 121.0 379.2
125.8 338.3 (356°-175°)	(Rwys 18C-36C, 18L-36R) 119.7 257.8	(Rwys 18C-36C, 18L-36R) 121.9 379.2
	(Rwy 18R-36L) 128.425 257.8	(Rwy 18R-36L) 121.65 379.2

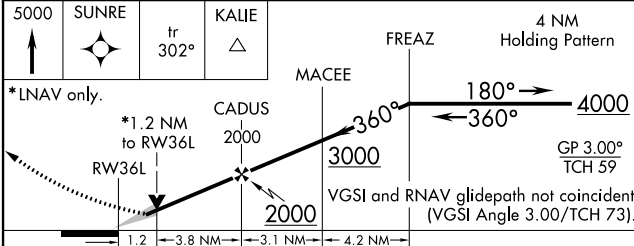
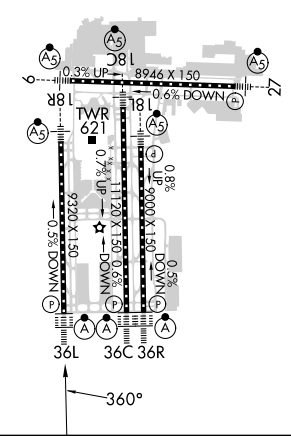
D-ATIS
127.75

CLNC DEL
125.2 CPDLC



ELEV 341	D TDZE 321
----------	-------------------

TDZ/CL Rwys 18L, 18C, 18R, 36R, 36C, and 36L
HIRL all Rwys



CATEGORY	A	B	C	D
LPV DA		673/40	352 (400-¾)	
LNAV/VNAV DA		760/50	439 (500-1)	
LNAV MDA	780/24	459 (500-½)	780/40 459 (500-¾)	780/50 459 (500-1)
C CIRCLING	940-1	599 (600-1)	940-1½ 599 (600-1½)	1020-2¼ 679 (700-2¼)

SE-1, 22 FEB 2024 to 21 MAR 2024

SE-1, 22 FEB 2024 to 21 MAR 2024

WAAS CH 49107 W36D	APP CRS 360°	Rwy Idg TDZE Apt Elev	9000 335 341
--	------------------------	-----------------------------	---

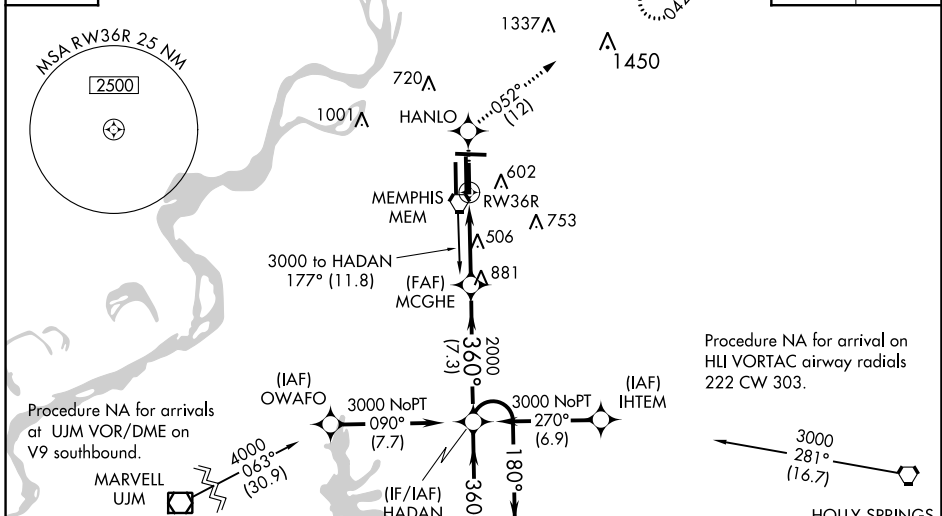
RNAV (GPS) RWY 36R

MEMPHIS INTL (MEM)

<p>▼ For uncompensated Baro-VNAV systems, LNAV/VNAV NA below -1.5°C (5°F) or above 48°C (118°F). Simultaneous approach authorized. DME/DME RNP-0.3 NA. LNAV procedure NA during simultaneous operations. Use of FD or AP required during simultaneous operations.</p>	<p>ALSF-2</p>	<p>MISSED APPROACH: Climb to 5000 direct HANLO and on 052° track to OROCU and hold, continue climb-in-hold to 5000.</p>

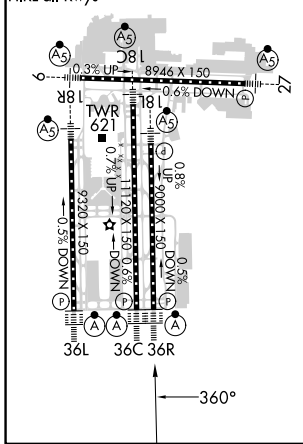
MEMPHIS APP CON	MEMPHIS TOWER	GND CON
119.1 291.6 (176°-355°)	(Rwy 9-27) 118.3 257.8	(Rwy 9-27) 121.0 379.2
125.8 338.3 (356°-175°)	(Rwys 18C-36C, 18L-36R) 119.7 257.8	(Rwys 18C-36C, 18L-36R) 121.9 379.2
	(Rwy 18R-36L) 128.425 257.8	(Rwy 18R-36L) 121.65 379.2

D-ATIS	CLNC DEL	CPDLC
127.75	125.2	

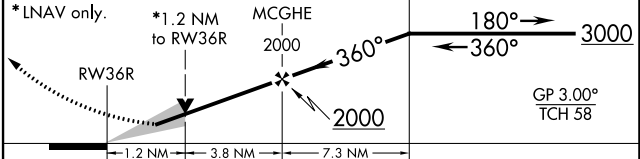


ELEV 341	D	TDZE 335
----------	----------	----------

TDZ/CL Rwys 18L, 18C, 18R, 36R, 36C, and 36L
HIRL all Rwys



5000	HANLO	tr 052°	OROCU	VGSI and RNAV glidepath not coincident (VGSI Angle 3.00/TCH 69).	4 NM
				HADAN	Holding Pattern



CATEGORY	A	B	C	D
LPV DA		639/24	304 (300-1/2)	
LNAV/VNAV DA		763/50	428 (500-1)	
LNAV MDA	760/24	425 (500-1/2)	760/40 425 (500-3/4)	760/50 425 (500-1)
C CIRCLING	940-1	599 (600-1)	940-1 1/2 599 (600-1 1/2)	1020-2 1/4 679 (700-2 1/4)

SE-1, 22 FEB 2024 to 21 MAR 2024

SE-1, 22 FEB 2024 to 21 MAR 2024

WAAS CH 63106 W09A	APP CRS 093°	Rwy Idg TDZE Apt Elev	8946 259 341
---------------------------------	------------------------	-----------------------------	---

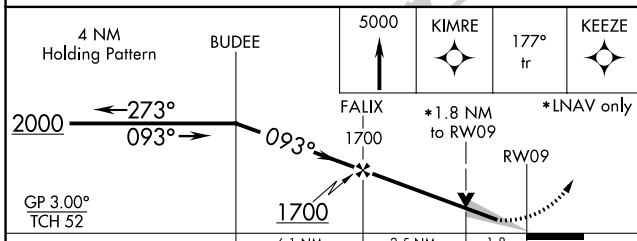
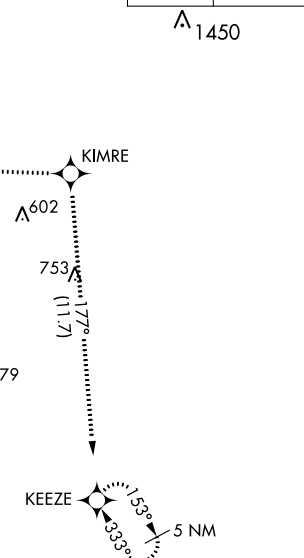
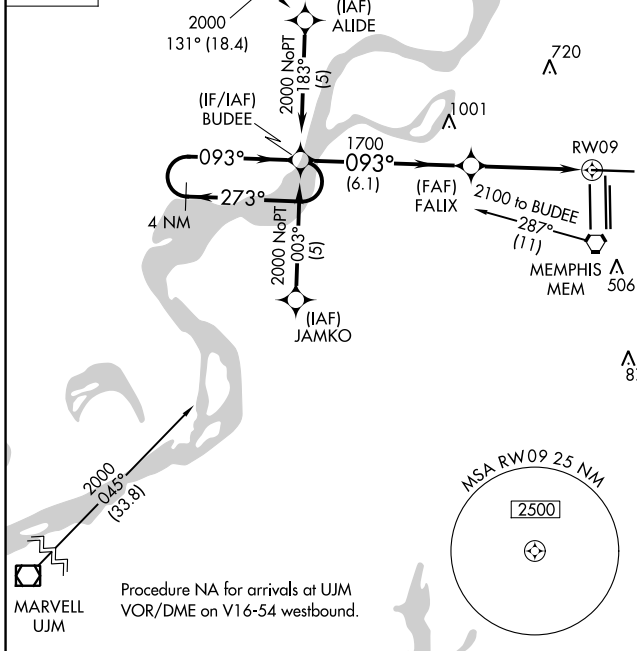
RNAV (GPS) RWY 9

MEMPHIS INTL (MEM)

<p>⚠ For uncompensated Baro-VNAV systems, LNAV/VNAV NA below -15°C (5°F) or above 48°C (118°F). DME/DME RNP-0.3 NA. For inop ALS, increase LPV all Cats visibility to RVR 5000.</p>	<p>MALSR</p>	<p>MISSED APPROACH: Climb to 5000 direct KIMRE and on 177° track to KEEZE and hold, continue climb-in-hold to 5000.</p>
--	--------------	---

MEMPHIS APP CON	MEMPHIS TOWER	GND CON
119.1 291.6 (176°-355°)	(Rwy 9-27) 118.3 257.8	(Rwy 9-27) 121.0 379.2
125.8 338.3 (356°-175°)	(Rwys 18C-36C, 18L-36R) 119.7 257.8	(Rwys 18C-36C, 18L-36R) 121.9 379.2
	(Rwy 18R-36L) 128.425 257.8	(Rwy 18R-36L) 121.65 379.2

D-ATIS 127.75	GILMORE GQE	Procedure NA for arrivals at GQE VOR/DME on V159 northwest bound.	1337 Δ	CLNC DEL 125.2	CPDLC
-------------------------	-------------	---	---------------	--------------------------	-------



CATEGORY	A	B	C	D
LPV DA	557/24 298 (300-1/2)			
LNAV/VNAV DA	782/60 523 (500-1/4)			
LNAV MDA	880/24 621 (600-1/2)	880/60 621 (600-1/4)	880-1/2 621 (600-1/2)	
C CIRCLING	940-1 599 (600-1)	940-1/2 599 (600-1/2)	1020-2/4 679 (700-2/4)	

ELEV 341	TDZE 259
<p>TDZ/CL Rwys 18L, 18R, 36R, 36C, and 36L HIRL all Rwys</p>	

SE-1, 22 FEB 2024 to 21 MAR 2024

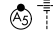
SE-1, 22 FEB 2024 to 21 MAR 2024

RNAV (RNP) X RWY 18L

MEMPHIS INTL (MEM)

APP CRS	Rwy Idg	9000
180°	TDZE	301
	Apt Elev	341

▼ For uncompensated Baro-VNAV systems, LNAV/VNAV NA below -9°C (16°F) or above 48°C (118 °F). Simultaneous approach authorized. GPS required. Missed approach requires RNP less than 1.0. For inop ALS increase RNP 0.11 all Cats visibility to RVR 6000.

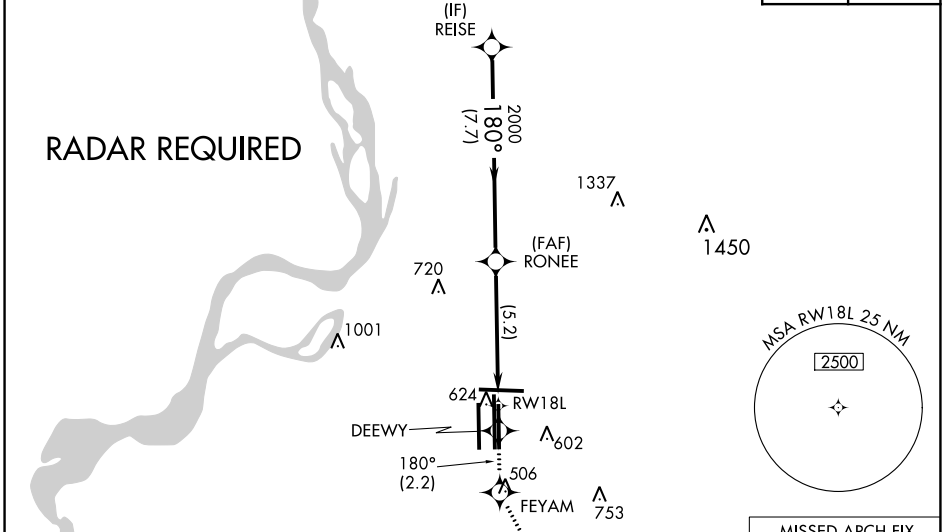
MALSR  MISSED APPROACH: Climb to 5000 on track 180° to DEEWY and on track 180° to FEYAM left turn on track 153° to KEEZE and hold, continue climb-in-hold to 5000.

MEMPHIS APP CON	MEMPHIS TOWER	GND CON
119.1 291.6 (176°-355°)	118.3 257.8 (Rwy 9-27)	121.0 379.2 (Rwy 9-27)
125.8 338.3 (356°-175°)	119.7 257.8 (Rwys 18C-36C, 18L-36R)	121.9 379.2 (Rwys 18C-36C, 18L-36R)
	128.425 257.8 (Rwy 18R-36L)	121.65 379.2 (Rwy 18R-36L)

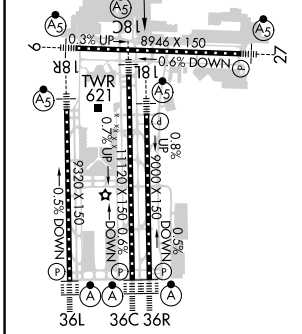
D-ATIS
127.75

CLNC DEL
125.2

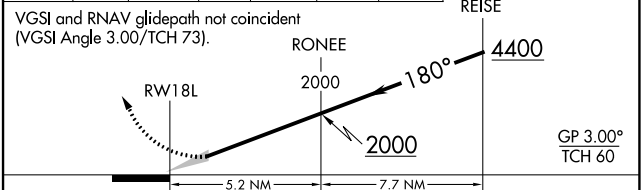
CPDLC



ELEV 341	D	TDZE 301
-----------------	----------	-----------------



5000	tr 180°	DEEWY	tr 180°	FEYAM	tr 153°	KEEZE
------	---------	-------	---------	-------	---------	-------



CATEGORY	A	B	C	D
RNP 0.11 DA	647/40 346 (400-¾)			

TDZ/CL Rwys 18L, 18C, 18R, 36R, 36C, and 36L
HIRL all Rwys

MEMPHIS, TENNESSEE
Orig-D 29MAR18

35°03'N-89°59'W

MEMPHIS INTL (MEM)
RNAV (RNP) X RWY 18L

AUTHORIZATION REQUIRED

SE-1, 22 FEB 2024 to 21 MAR 2024


SE-1, 22 FEB 2024 to 21 MAR 2024

RNAV (RNP) X RWY 18R

MEMPHIS INTL (MEM)

APP CRS	Rwy Idg	9320
180°	TDZE	295
	Apt Elev	341

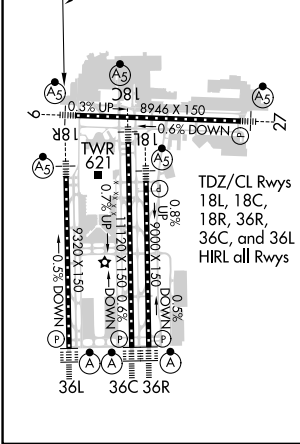
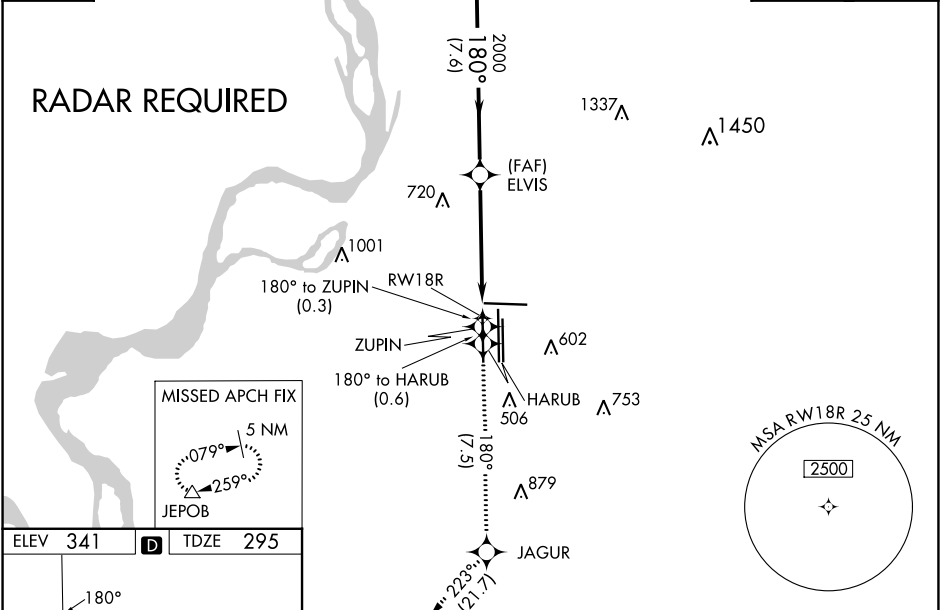
▼ For uncompensated Baro-VNAV systems, procedure NA below -9°C (16°F) or above 48°C (118°F). Simultaneous approach authorized. GPS required. Missed approach requires RNP less than 1.0. Use of FD or AP required during simultaneous operations.

MALSR  MISSED APPROACH: Climb to 5000 on track 180° to ZUPIN and on track 180° to HARUB and on track 180° to JAGUR and on track 223° to JEPOB and hold.

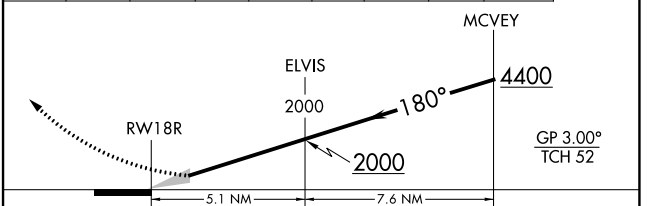
MEMPHIS APP CON	MEMPHIS TOWER	GND CON
119.1 291.6 (176°-355°)	118.3 257.8 (Rwy 9-27)	121.0 379.2 (Rwy 9-27)
125.8 338.3 (356°-175°)	119.7 257.8 (Rwys 18C-36C, 18L-36R)	121.9 379.2 (Rwys 18C-36C, 18L-36R)
	128.425 257.8 (Rwy 18R-36L)	121.65 379.2 (Rwy 18R-36L)

D-ATIS	127.75
--------	---------------

CLNC DEL	125.2	CPDLC
----------	--------------	-------



5000	↑	ZUPIN	HARUB	JAGUR	JEPOB
	tr 180°	tr 180°	tr 180°	tr 223°	△



CATEGORY	A	B	C	D
RNP 0.14 DA	737/45		442 (400-7/8)	


AUTHORIZATION REQUIRED

RNAV (RNP) Y RWY 18C

MEMPHIS INTL (MEM)

APP CRS	Rwy Idg	11120
180°	TDZE	290
	Apt Elev	341

▼ For uncompensated Baro-VNAV systems, procedure NA below -10°C (14°F) or above 54°C (130°F). GPS required. For inop ALS, increase RNP 0.30* all Cats visibility to 1½ SM and RNP 0.30 all Cats visibility to 1½ SM. Simultaneous approach authorized. Use of FD or AP required during simultaneous operations.

MALSR

MISSED APPROACH: Climb to 5000 on track 180° to CEDEN on track 137° to KEEZE and hold, continue climb-in-hold to 5000. *Missed approach requires a minimum climb of 400 feet per NM to 1000.

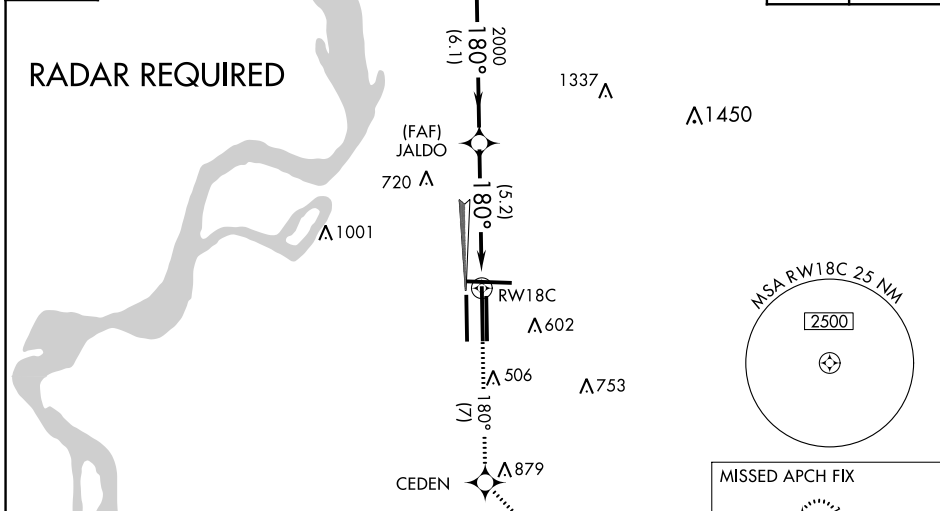
MEMPHIS APP CON	
119.1 291.6	(176°-355°)
125.8 338.3	(356°-175°)

MEMPHIS TOWER	
(Rwy 9-27)	118.3 257.8
(Rwys 18C-36C, 18L-36R)	119.7 257.8
(Rwy 18R-36L)	128.425 257.8

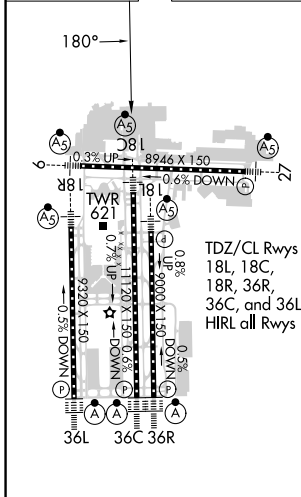
GND CON	
(Rwy 9-27)	121.0 379.2
(Rwys 18C-36C, 18L-36R)	121.9 379.2
(Rwy 18R-36L)	121.65 379.2

D-ATIS
127.75

CLNC DEL	CPDLC
125.2	



ELEV 341	D	TDZE 290
----------	----------	----------



5000	tr 180°	CEDEN	tr 137°	KEEZE	LAURI
		JALDO			3900
		RWY 18C			2000
					2000
					5.2 NM
					6.1 NM
					GP 3.00° TCH 54
CATEGORY	A	B	C	D	
RNP 0.30 DA*	655/35		365 (400-%)		
RNP 0.30 DA	747/54		457 (500-1)		


AUTHORIZATION REQUIRED

RNAV (RNP) Y RWY 18L

MEMPHIS INTL (MEM)

APP CRS	Rwy Idg	9000
180°	TDZE	301
	Apt Elev	341

▼ For uncompensated Baro-VNAV systems, procedure NA below -9°C (16°F) or above 48°C (118 °F). GPS required. Simultaneous approach authorized. For inop ALS, increase RNP 0.30 * all Cats visibility to RVR 6000 and RNP 0.30 all Cats visibility to 1¼ SM.

MALSR

MISSED APPROACH: Climb to 5000 on track 180° to PENLE and on track 136° to KEEZE and hold, continue climb-in-hold to 5000. *Missed approach requires minimum climb of 400 feet per NM to 1000.

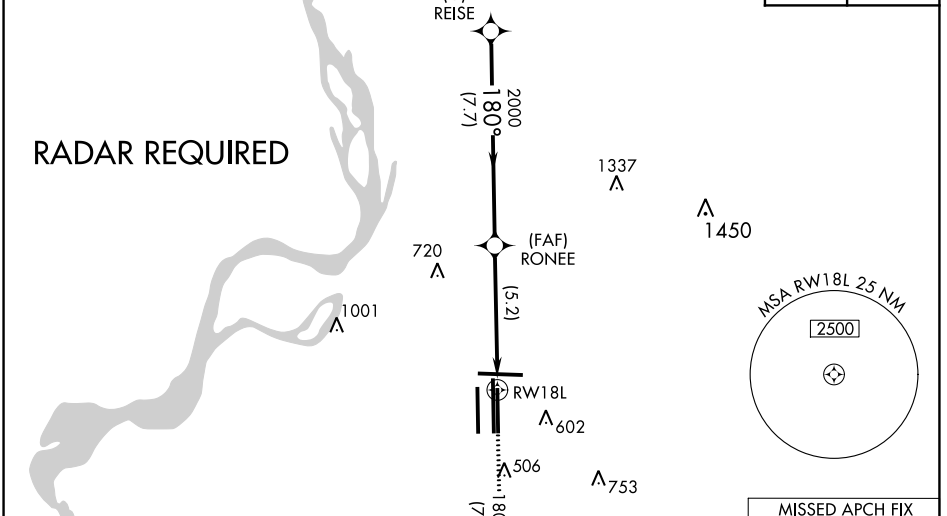
MEMPHIS APP CON	
119.1 291.6	(176°-355°)
125.8 338.3	(356°-175°)

MEMPHIS TOWER	
(Rwy 9-27)	118.3 257.8
(Rwys 18C-36C, 18L-36R)	119.7 257.8
(Rwy 18R-36L)	128.425 257.8

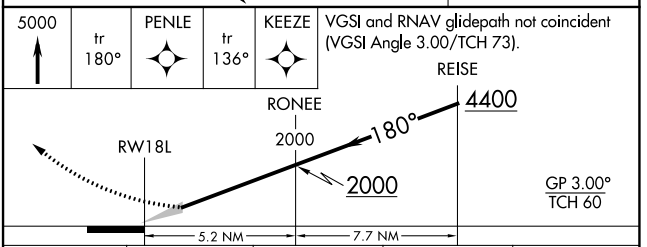
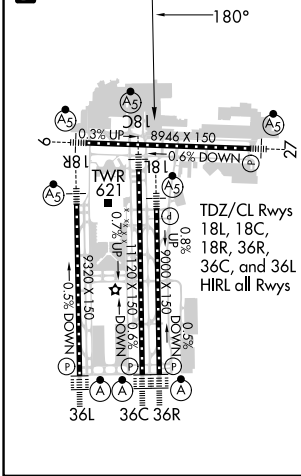
GND CON	
(Rwy 9-27)	121.0 379.2
(Rwys 18C-36C, 18L-36R)	121.9 379.2
(Rwy 18R-36L)	121.65 379.2

D-ATIS
127.75

CLNC DEL **125.2** CPDLC



ELEV	341
TDZE	301



CATEGORY	A	B	C	D
RNP 0.30 DA*		698/50	397 (400-1)	
RNP 0.30 DA		791/60	490 (500-1¼)	

AUTHORIZATION REQUIRED

SE-1, 22 FEB 2024 to 21 MAR 2024


SE-1, 22 FEB 2024 to 21 MAR 2024

RNAV (RNP) Y RWY 18R

MEMPHIS INTL (MEM)

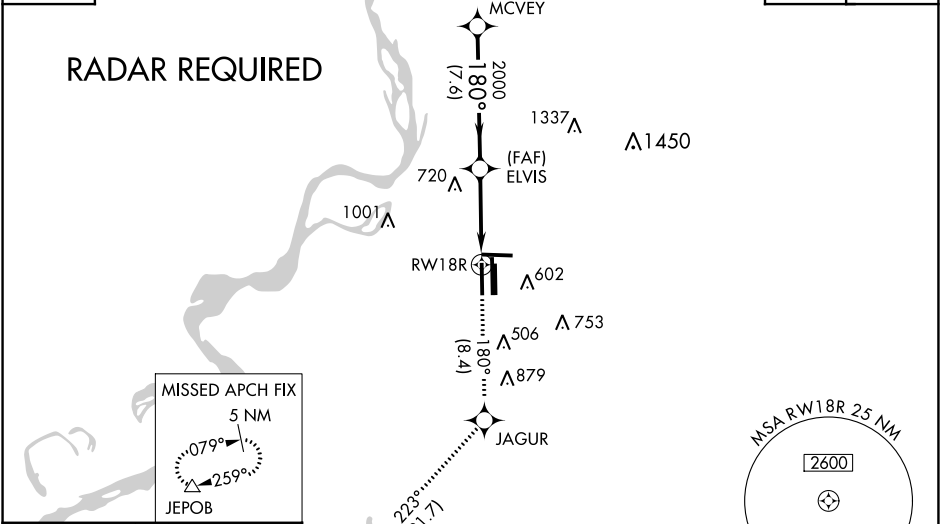
APP CRS	Rwy Idg	9320
180°	TDZE	295
	Apt Elev	341

▼ For uncompensated Baro-VNAV systems, procedure NA below -9°C (16°F) or above 48°C (118°F). Simultaneous approach authorized. GPS required. Use of FD or AP required during simultaneous operations. For inop ALS, increase RNP 0.19* all Cats visibility to RVR 6000 and RNP 0.30 all Cats visibility to 1 3/4 SM.

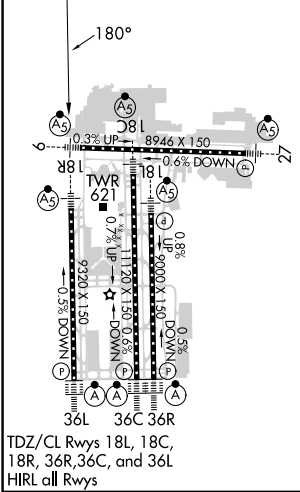
MALSR

MISSED APPROACH: Climb to 5000 on track 180° to JAGUR and on track 223° to JEPOB and hold. *Missed approach requires minimum climb of 425 feet per NM to 1000.

MEMPHIS APP CON	MEMPHIS TOWER	GND CON
119.1 291.6 (176°-355°)	(Rwy 9-27) 118.3 257.8	(Rwy 9-27) 121.0 379.2
125.8 338.3 (356°-175°)	(Rwys 18C-36C, 18L-36R) 119.7 257.8	(Rwys 18C-36C, 18L-36R) 121.9 379.2
	(Rwy 18R-36L) 128.425 257.8	(Rwy 18R-36L) 121.65 379.2

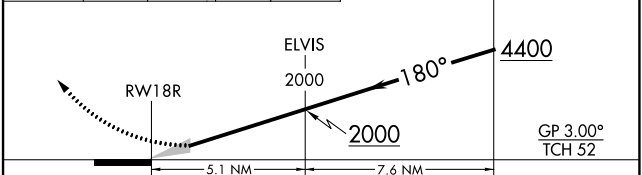
D-ATIS	CLNC DEL	CPDLC
127.75	125.2	



ELEV	341	D	TDZE	295
------	------------	----------	------	------------



5000	↑	tr 180°	JAGUR	tr 223°	JEPOB
------	---	---------	-------	---------	-------



CATEGORY	A	B	C	D
RNP 0.19 DA *		645/40	350 (400-3/4)	
RNP 0.30 DA		771/60	476 (500-1 1/4)	

AUTHORIZATION REQUIRED

SE-1, 22 FEB 2024 to 21 MAR 2024

SE-1, 22 FEB 2024 to 21 MAR 2024

WAAS CH 97507 W18D	APP CRS 180°	Rwy Idg TDZE Apt Elev	1120 290 341
--	------------------------	-----------------------------	---

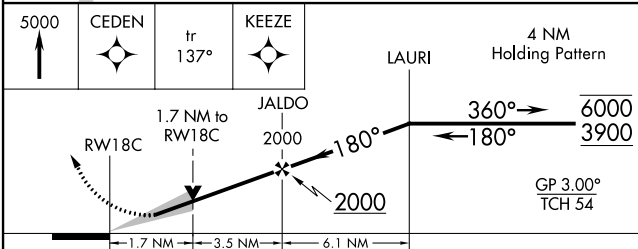
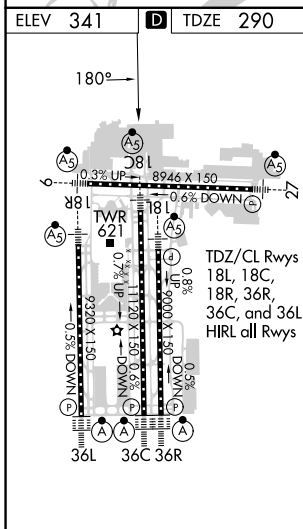
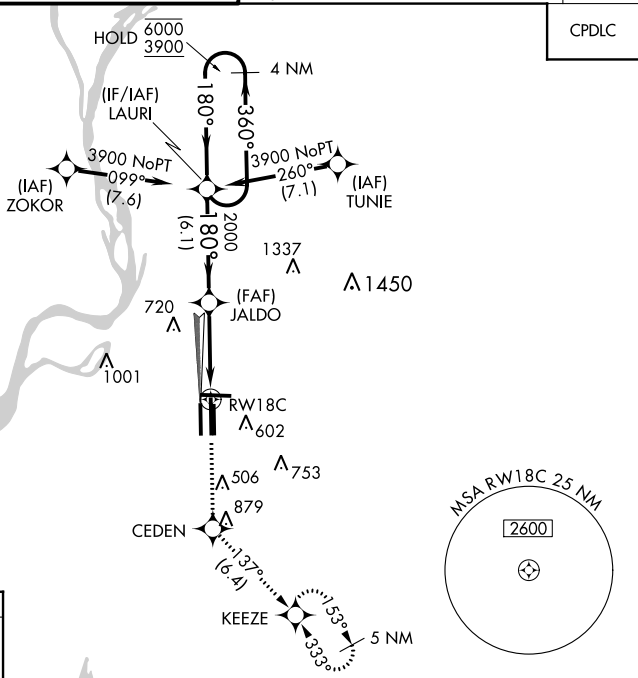
RNAV (GPS) Z RWY 18C

MEMPHIS INTL (MEM)

RNP APCH - GPS	MALSR	MISSED APPROACH: Climb to 5000 direct CEDEN and on track 137° to KEEZE and hold, continue climb-in-hold to 5000.
<p>Simultaneous approach authorized. For uncompensated Baro-VNAV systems, LNAV/VNAV NA below -15°C or above 54°C. Use of FD or AP required during simultaneous operations. LNAV procedure NA during simultaneous operations. For Inop ALS, increase LPV all Cats visibility to RVR 5500 and LNAV/VNAV all Cats visibility to 1½ SM.</p>		

MEMPHIS APP CON	MEMPHIS TOWER	GND CON	CLNC DEL
119.1 291.6 (176°-355°)	118.3 257.8 (Rwy 9-27)	121.0 379.2 (Rwy 9-27)	125.2
125.8 338.3 (356°-175°)	119.7 257.8 (Rwys 18C-36C, 18L-36R)	121.9 379.2 (Rwys 18C-36C, 18L-36R)	
	128.425 257.8 (Rwy 18R-36L)	121.65 379.2 (Rwy 18R-36L)	

D-ATIS 127.75	CPDLC
-------------------------	-------



CATEGORY	A	B	C	D
LPV DA		665/35	375 (400-½)	
LNAV/VNAV DA		782/50	492 (500-1)	
LNAV MDA	880/24	590 (600-½)	880-1¼	590 (600-1¼)
C CIRCLING	940-1	599 (600-1)	940-1¾ 599 (600-1¾)	1020-2 ¼ 679 (700-2¼)

SE-1, 22 FEB 2024 to 21 MAR 2024

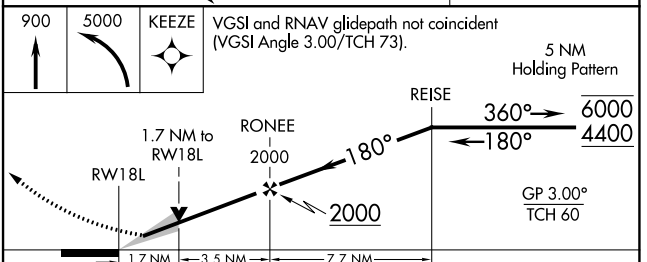
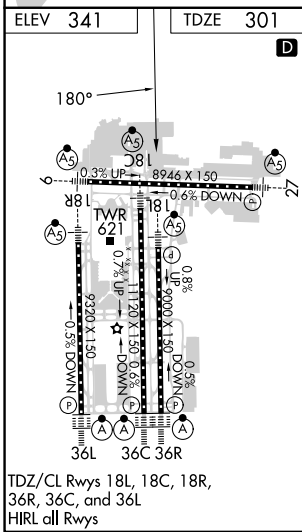
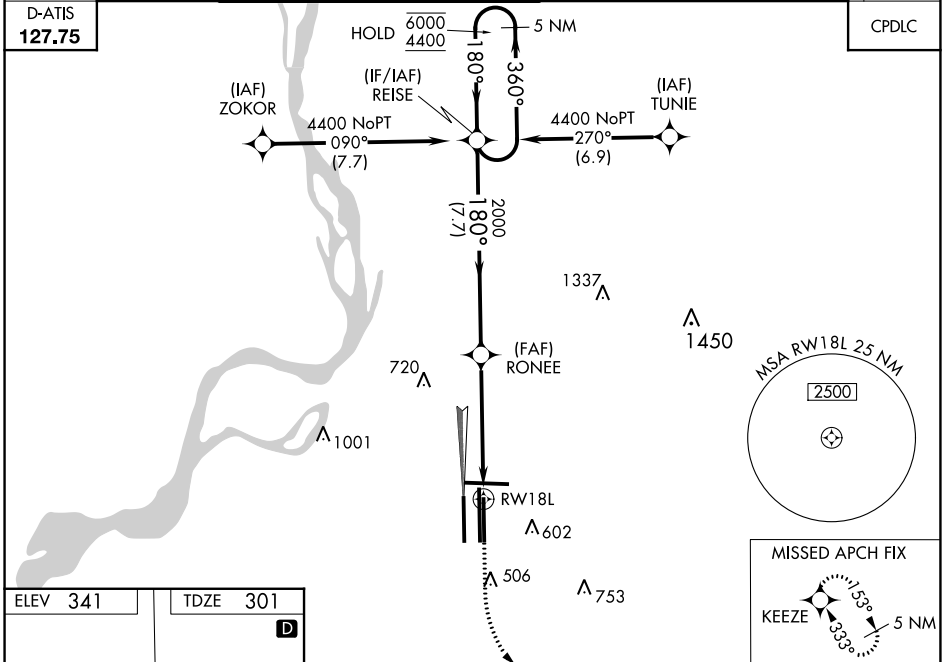
SE-1, 22 FEB 2024 to 21 MAR 2024

WAAS CH 53307 W18B	APP CRS 180°	Rwy Idg TDZE Apt Elev	9000 301 341
--	------------------------	-----------------------------	---

RNAV (GPS) Z RWY 18L

MEMPHIS INTL (MEM)

RNP APCH - GPS		MALSR	MISSED APPROACH: Climb to 900 then climbing left turn to 5000 direct KEEZE and hold, continue climb-in-hold to 5000.
Simultaneous approach authorized. For uncompensated Baro-VNAV systems, LNAV/VNAV NA below -15°C or above 54°C. LNAV procedure NA during simultaneous operations. Use of FD or AP required during simultaneous operations. For inop ALS, increase LNAV/VNAV all Cats visibility to 1½ SM and LNAV Cat C/D visibility to 1½ SM.			
MEMPHIS APP CON	MEMPHIS TOWER	GND CON	CLNC DEL
119.1 291.6 (176°-355°)	(Rwy 9-27) 118.3 257.8 (Rwys 18C-36C, 18L-36R) 119.7 257.8 (Rwy 18R-36L) 128.425 257.8	(Rwy 9-27) 121.0 379.2 (Rwys 18C-36C, 18L-36R) 121.9 379.2 (Rwy 18R-36L) 121.65 379.2	125.2
125.8 338.3 (356°-175°)			



CATEGORY	A	B	C	D
LPV DA		557/18	256 (300-½)	
LNAV/VNAV DA		874-1¼	573 (600-1¼)	
LNAV MDA	880/24	579 (600-½)	880-1¼	579 (600-1¼)
CIRCLING	940-1	599 (600-1)	940-1½ 599 (600-1½)	1020-2¼ 679 (700-2¼)

SE-1, 22 FEB 2024 to 21 MAR 2024

SE-1, 22 FEB 2024 to 21 MAR 2024

WAAS CH 56606 W18A	APP CRS 180°	Rwy Idg TDZE Apt Elev	9320 295 341
---------------------------------	------------------------	-----------------------------	---

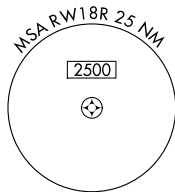
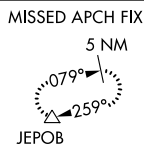
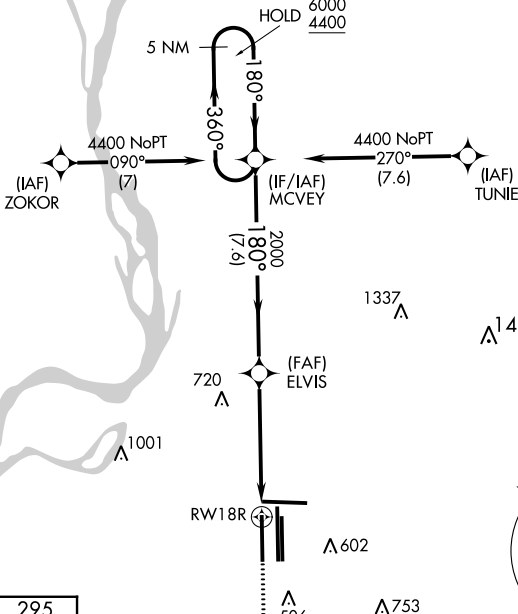
RNAV (GPS) Z RWY 18R

MEMPHIS INTL (MEM)

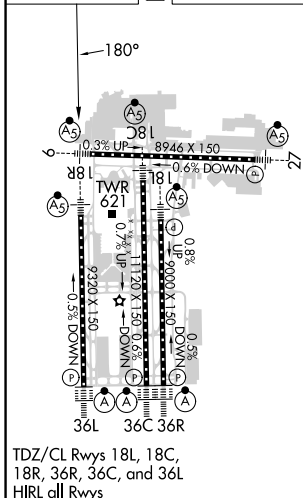
RNP APCH - GPS	MALSR 	MISSED APPROACH: Climb to 900 then climbing right turn to 5000 direct JEPOB and hold.
----------------	-----------	--

MEMPHIS APP CON	MEMPHIS TOWER	GND CON
119.1 291.6 (176°-355°)	(Rwy 9-27) 118.3 257.8	(Rwy 9-27) 121.0 379.2
125.8 338.3 (356°-175°)	(Rwys 18C-36C, 18L-36R) 119.7 257.8	(Rwys 18C-36C, 18L-36R) 121.9 379.2
	(Rwy 18R-36L) 128.425 257.8	(Rwy 18R-36L) 121.65 379.2

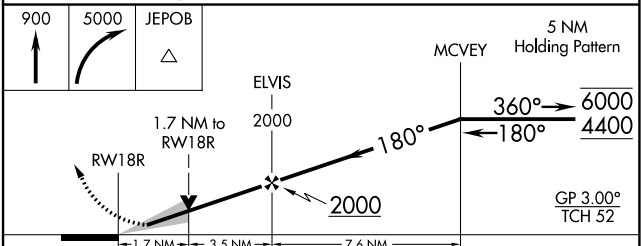
D-ATIS 127.75	CLNC DEL 125.2	CPDLC
-------------------------	--------------------------	-------



ELEV 341	D	TDZE 295
----------	----------	----------



MEMPHIS, TENNESSEE
Amdt 2G 07OCT21



CATEGORY	A	B	C	D
LPV DA		495/18	200 (200-½)	
LNAV/VNAV DA		874-1¼	579 (600-1¼)	
LNAV MDA	880/24	585 (600-½)	880-1¼	585 (600-1¼)
C CIRCLING	940-1	599 (600-1)	940-1¾ 599 (600-1¾)	1020-2¼ 679 (700-2¼)

SE-1, 22 FEB 2024 to 21 MAR 2024

SE-1, 22 FEB 2024 to 21 MAR 2024