

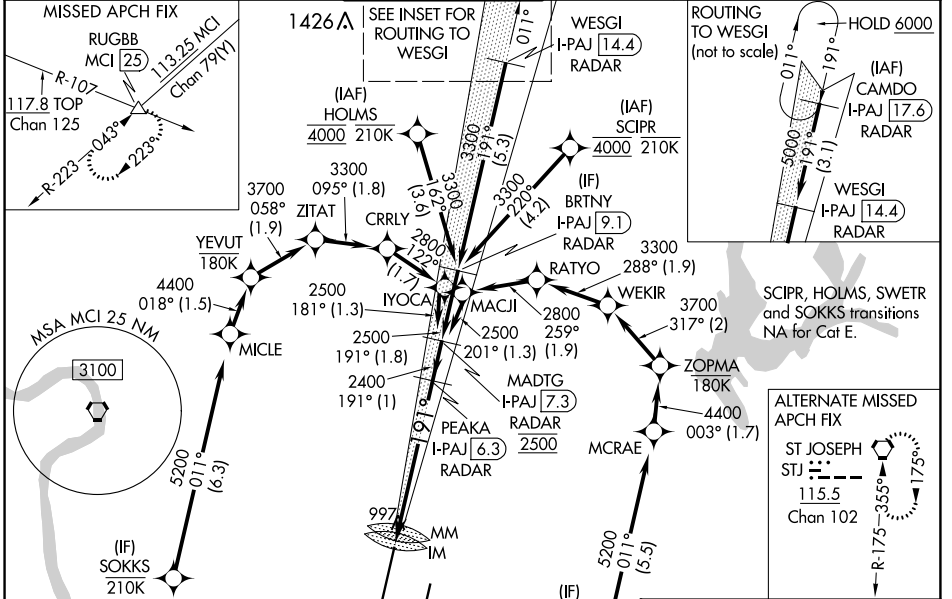
LOC/DME I-PAJ 109.1 Chan 28	APP CRS 191°	Rwy Idg 10801 TDZE 991 Apt Elev 1027
--	------------------------	---

ILS RWY 19R (CAT II & III)

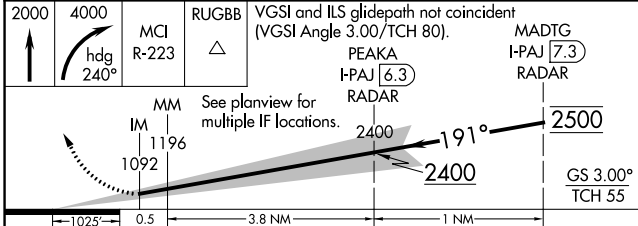
KANSAS CITY INTL (MCI)

RNP APCH - GPS. From SCIPR or HOLMS or SWETR or SOKKS.	ALSF-2 	MISSED APPROACH: Climb to 2000 then climbing right turn to 4000 on heading 240° and on MCI VORTAC R-223 to RUGBB INT/MCI 25 DME and hold.
DME or RADAR required. RADAR required for procedure entry at CAMDO.		
<p>Simultaneous approach authorized except from SCIPR and HOLMS, SOKKS, and SWETR. CAT II: RVR 1000 authorized with specific OPSPEC, MSPEC, or LOA approval and use of autoland or HUD to touchdown.</p>		

D-ATIS 128.375	KANSAS CITY APP CON 120.95 318.1	INTERNATIONAL TOWER 128.2 254.25	GND CON 121.8	CLNC DEL 135.7	CPDLC
--------------------------	--	--	-------------------------	--------------------------	-------

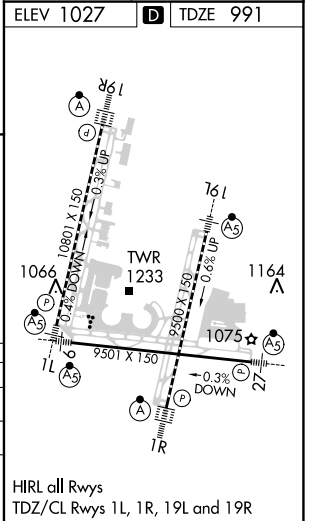


ELEV 1027	D TDZE 991
-----------	-------------------



CATEGORY	A	B	C	D	E
S-ILS 19R	CAT II RA 105/12 100 DA 1091				
S-ILS 19R	CAT III RVR 07				

CATEGORY II & III ILS - SPECIAL AIRCREW & AIRCRAFT CERTIFICATION REQUIRED



HIRL all Rwys
TDZ/CL Rwys 1L, 1R, 19L and 19R

NC-3, 22 FEB 2024 to 21 MAR 2024

NC-3, 22 FEB 2024 to 21 MAR 2024

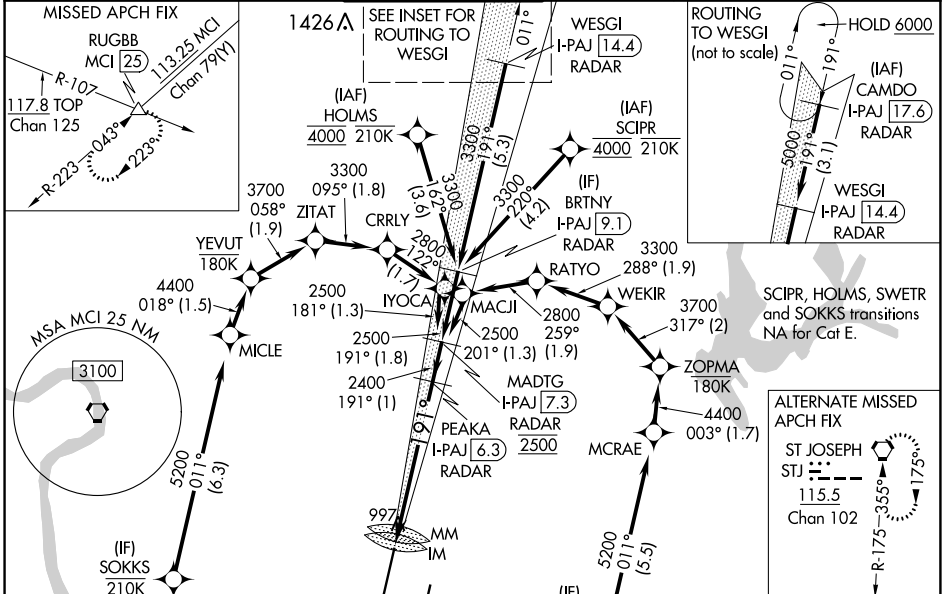
LOC/DME I-PAJ 109.1 Chan 28	APP CRS 191°	Rwy Idg 10801 TDZE 991 Apt Elev 1027
--	------------------------	---

ILS RWY 19R (SA CAT I)

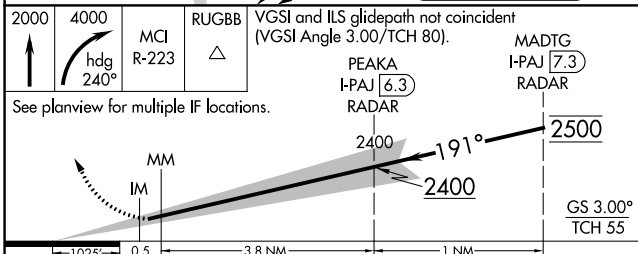
KANSAS CITY INTL (MCI)

RNP APCH - GPS. From SCIPR or HOLMS or SWETR or SOKKS.		ALSF-2 	MISSED APPROACH: Climb to 2000 then climbing right turn to 4000 on heading 240° and MCI VORTAC R-223 to RUGBB INT/MCI 25 DME and hold.
DME or RADAR required. RADAR required for procedure entry at CAMDO.			
<p>Requires specific OPSPEC, MSPEC, or LOA approval. Simultaneous approach authorized except from SCIPR, HOLMS, SOKKS, and SWETR.</p>			

D-ATIS 128.375	KANSAS CITY APP CON 120.95 318.1	INTERNATIONAL TOWER 128.2 254.25	GND CON 121.8	CLNC DEL 135.7	CPDLC
--------------------------	--	--	-------------------------	--------------------------	-------

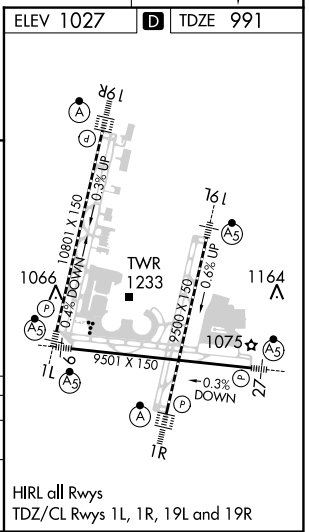


ELEV 1027	D TDZE 991
-----------	-------------------



CATEGORY	A	B	C	D	E
S-ILS 19R	RA 135/14 150 DA 1141				

SA CATEGORY I ILS - SPECIAL AIRCREW & AIRCRAFT CERTIFICATION REQUIRED



NC-3, 22 FEB 2024 to 21 MAR 2024

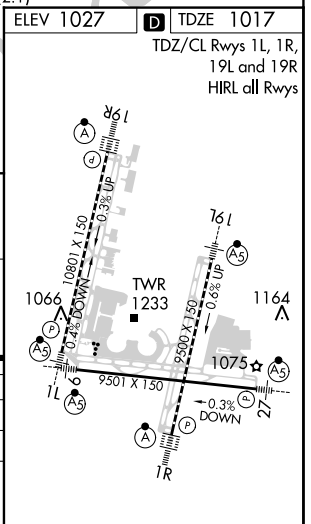
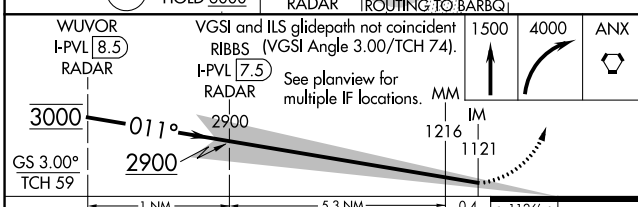
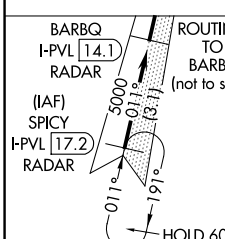
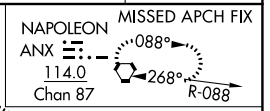
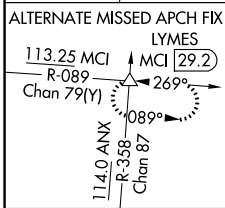
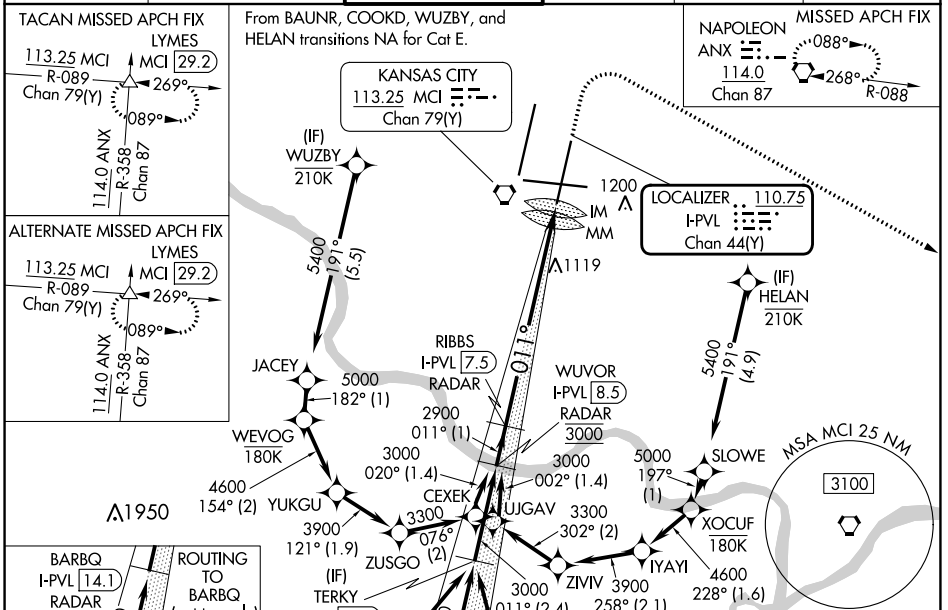
NC-3, 22 FEB 2024 to 21 MAR 2024

LOC/DME I-PVL 110.75 Chan 44(Y)	APP CRS 011°	Rwy Idg TDZE Apt Elev 9500 1017 1027
--	------------------------	--

ILS RWY 1R (CAT II & III)

KANSAS CITY INTL (MCI)

RNP APCH - GPS. From BAUNR or COOKD or WUZBY or HELAN.		ALSF-2 (A)	MISSED APPROACH: Climb to 1500 then climbing right turn to 4000 direct ANX VORTAC and hold. (TACAN aircraft) Climb to 1500 then climbing right turn to 4000 on heading 130° and MCI R-089 to LYMES INT/MCI 29.2 DME and hold.		
DME or RADAR required. RADAR required for procedure entry at SPICY.					
<p>Simultaneous approach authorized except from BAUNR, COOKD, WUZBY, and HELAN. CAT II: RVR 1000 authorized with specific OPSPEC, MSPEC, or LOA approval and use of autoland or HUD to touchdown.</p>					
D-ATIS 128.375	KANSAS CITY APP CON 120.95 318.1	INTERNATIONAL TOWER 128.2 254.25	GND CON 121.8	CLNC DEL 135.7	CPDLC



CATEGORY	A	B	C	D	E
S-ILS 1R	CAT II RA 111/12 100 DA 1117				
S-ILS 1R	CAT III RVR 06				

CATEGORY II & III ILS - SPECIAL AIRCREW & AIRCRAFT CERTIFICATION REQUIRED

NC-3, 22 FEB 2024 to 21 MAR 2024

NC-3, 22 FEB 2024 to 21 MAR 2024

LOC/DME I-PVL 110.75 Chan 44 (Y)	APP CRS 011°	Rwy Idg TDZE Apt Elev 9500 1017 1027
---	------------------------	--

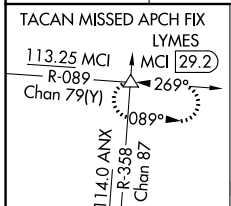
ILS RWY 1R (SA CAT I)

KANSAS CITY INTL (MCI)

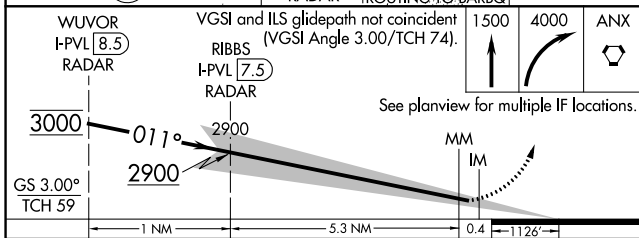
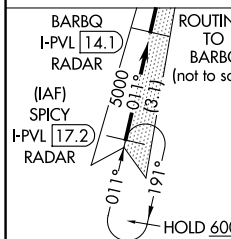
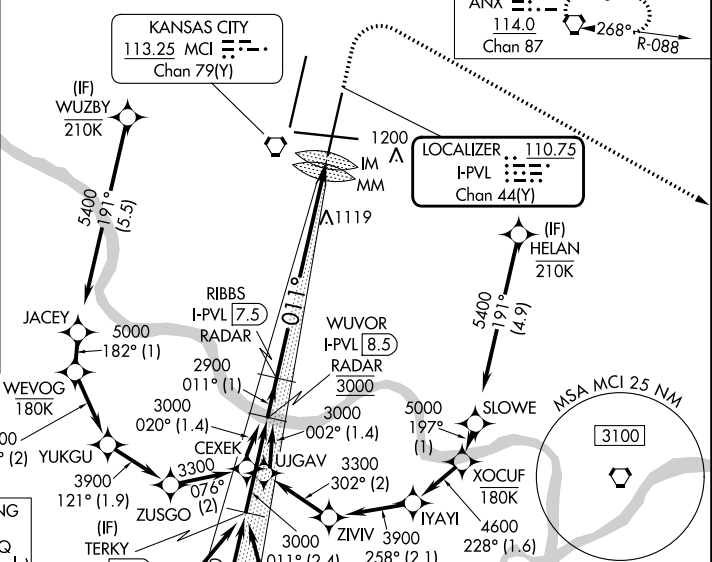
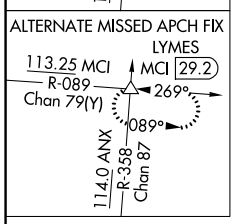
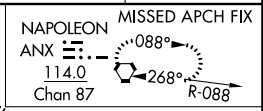
RNP PACH - GPS. From BAUNR or COOKD or WUZBY or HELAN.
 DME or RADAR required. RADAR required for procedure entry at SPICY.
 Requires specific OPSPEC, MSPEC, or LOA approval. Simultaneous approach authorized except from BAUNR, COOKD, WUZBY, and HELAN.

ALSF-2
 MISSED APPROACH: Climb to 1500 then climbing right turn to 4000 direct ANX VORTAC and hold. (TACAN aircraft) Climb to 1500 then climbing right turn to 4000 on heading 130° and MCI R-089 to LYMES INT/ MCI 29.2 DME and hold.

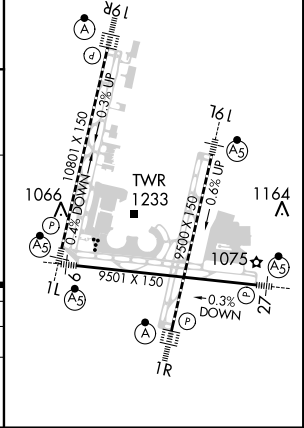
D-ATIS 128.375	KANSAS CITY APP CON 120.95 318.1	INTERNATIONAL TOWER 128.2 254.25	GND CON 121.8	CLNC DEL 135.7	CPDLC
--------------------------	--	--	-------------------------	--------------------------	-------



From BAUNR, COOKD, WUZBY, and HELAN transitions NA for Cat E.



ELEV 1027	TDZE 1017
TDZ/CL Rwy 1L, 1R, 19L and 19R	
HIRL all Rwy	



CATEGORY	A	B	C	D	E
S-ILS 1R	RA 161/14 150 DA 1167				
SA CATEGORY I ILS - SPECIAL AIRCREW & AIRCRAFT CERTIFICATION REQUIRED					

NC-3, 22 FEB 2024 to 21 MAR 2024

NC-3, 22 FEB 2024 to 21 MAR 2024

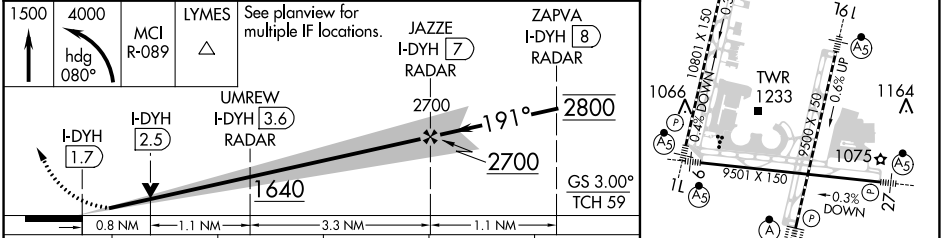
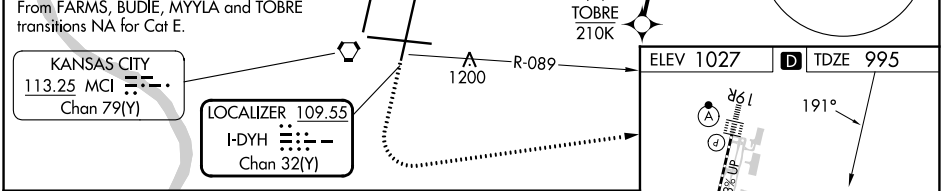
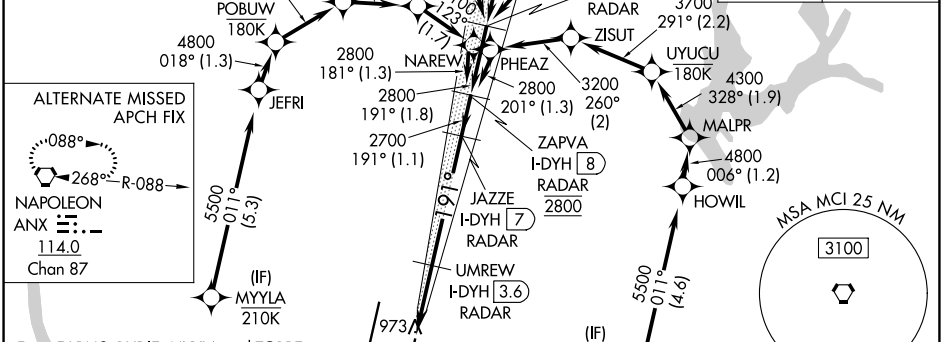
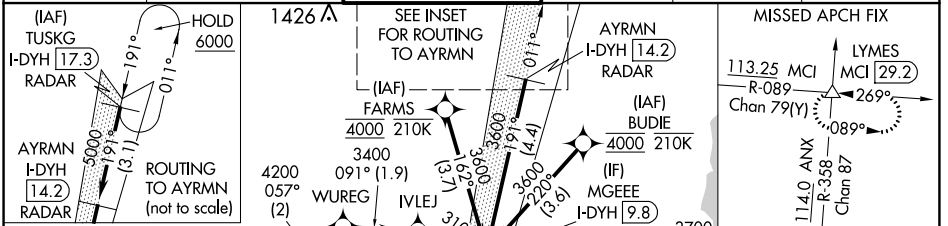
LOC/DME I-DYH 109.55 Chan 32 (Y)	APP CRS 191°	Rwy Idg 9500 TDZE 995 Apt Elev 1027
--	------------------------	--

ILS or LOC RWY 19L

KANSAS CITY INTL (MCI)

RNP APCH - GPS. From FARMS or BUDIE or MYLLA or TOBRE.	MALSR	MISSED APPROACH: Climb to 1500 then climbing left turn to 4000 on heading 080° and MCI VORTAC R-089 to LYMES INT/ MCI 29.2 DME and hold.
DME or RADAR required. RADAR required for procedure entry at TUSKG.		
For inop ALS, increase S-ILS 19L Cat E visibility to RVR 4000 and S-LOC 19L Cat C/D/E visibility to RVR 4500. Simultaneous approach authorized except from BUDIE, FARMS, TOBRE, and MYLLA.		

D-ATIS 128.375	KANSAS CITY APP CON 120.95 318.1	INTERNATIONAL TOWER 128.2 254.25	GND CON 121.8	CLNC DEL 135.7	CPDLC
--------------------------	--	--	-------------------------	--------------------------	-------



ELEV 1027	TDZE 995					
1500	4000	MCI R-089	LYMES	See planview for multiple IF locations.	JAZZE I-DYH 7	ZAPVA I-DYH 8
↑	hdg 080°		△			
0.8 NM	1.1 NM	3.3 NM	1.1 NM			
CATEGORY	A	B	C	D	E	
S-ILS 19L		1195/18	200 (200-½)			
S-LOC 19L		1280/24	285 (300-½)			
CIRCLING	1540-1	513 (600-1)	1540-1½ 513 (600-1½)	1580-2	553 (600-2)	
HIRL all Rwy's	TDZ/CL Rwy's 1L, 1R, 19L and 19R					
	FAF to MAP 5.2 NM					
Knots	60	90	120	150	180	
Min:Sec	5:12	3:28	2:36	2:05	1:44	

NC-3, 22 FEB 2024 to 21 MAR 2024

NC-3, 22 FEB 2024 to 21 MAR 2024

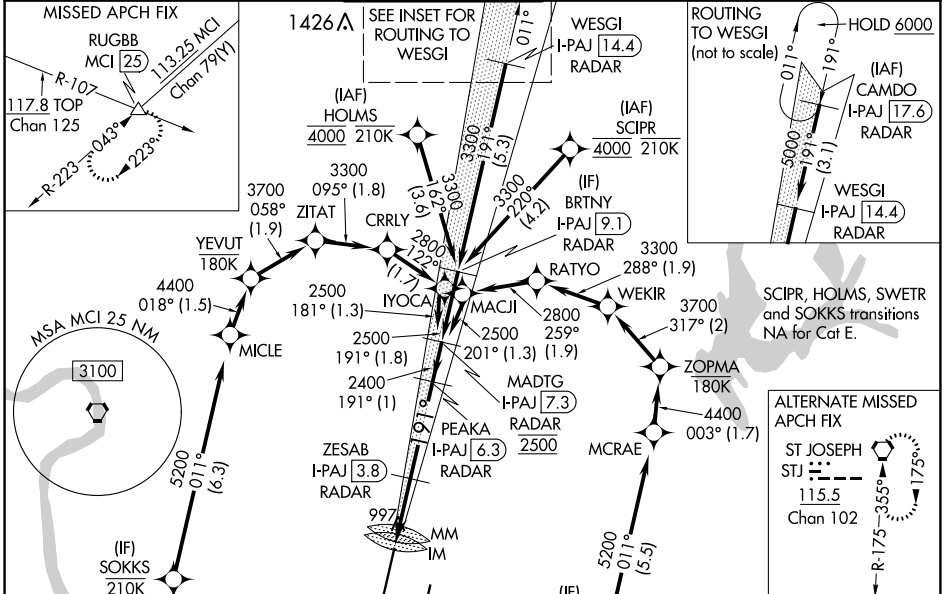
LOC/DME I-PAJ 109.1 Chan 28	APP CRS 191°	Rwy Idg 10801 TDZE 991 Apt Elev 1027
--	------------------------	---

ILS or LOC RWY 19R

KANSAS CITY INTL (MCI)

RNP APCH - GPS. From SCIPR or HOLMS or SWETR or SOKKS.		ALSF-2 	MISSED APPROACH: Climb to 2000 then climbing right turn to 4000 on heading 240° and MCI VORTAC R-223 to RUGBB INT/MCI 25 DME and hold.
DME or RADAR required. RADAR required for procedure entry at CAMDO.			
For inop ALS, increase S-ILS 19R Cat E visibility to RVR 4000 and S-LOC 19R Cat C/D/E to RVR 4500. Simultaneous approach authorized except from SCIPR, HOLMS, SOKKS and SWETR.			

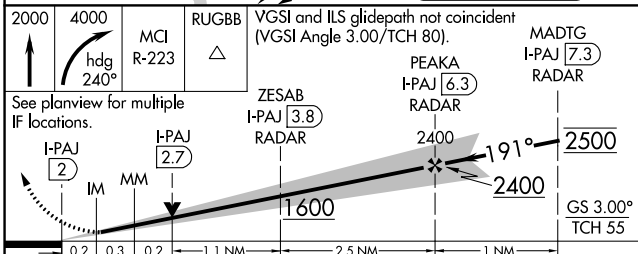
D-ATIS 128.375	KANSAS CITY APP CON 120.95 318.1	INTERNATIONAL TOWER 128.2 254.25	GND CON 121.8	CLNC DEL 135.7	CPDLC
--------------------------	--	--	-------------------------	--------------------------	-------



NC-3, 22 FEB 2024 to 21 MAR 2024

NC-3, 22 FEB 2024 to 21 MAR 2024

ELEV 1027	D TDZE 991



CATEGORY	A	B	C	D	E
S-ILS 19R		1191/18	200 (200-1/2)		
S-LOC 19R		1280/24	289 (300-1/2)		
C CIRCLING	1540-1	513 (600-1)	1540-1 1/2 513 (600-1 1/2)	1580-2	553 (600-2)
Knots	60	90	120	150	180
Min:Sec	4:18	2:52	2:09	1:43	1:26

LOC/DME I-DOT 110.5 Chan 42	APP CRS 011°	Rwy Idg TDZE Apt Elev	10801 1014 1027
--	------------------------	-----------------------------	--

ILS or LOC RWY 1L

KANSAS CITY INTL (MCI)

RNP APCH - GPS. From GAYLZ or JERLD or WARMW or VVEST.

DME or RADAR required. RADAR required for procedure entry at CYPRE.

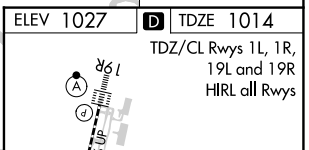
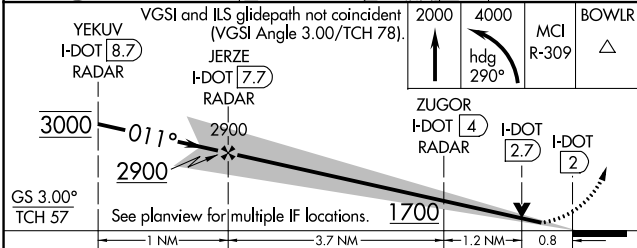
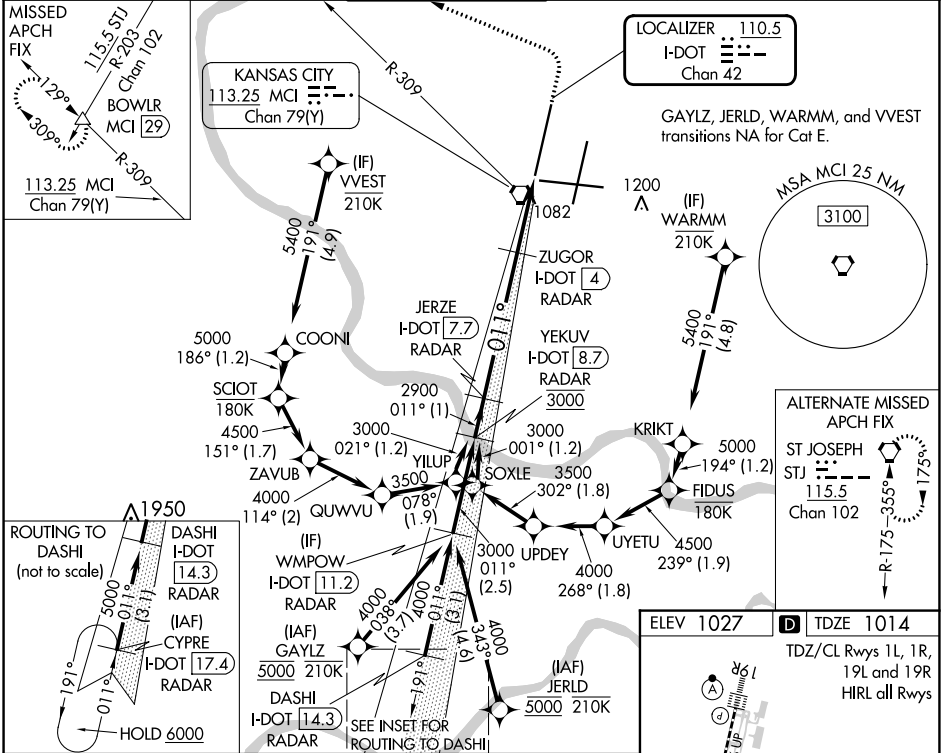
For inop ALS, increase S-ILS 1L Cat E visibility to RVR 4000 and S-LOC 1L Cat E visibility to RVR 5000. Simultaneous approach authorized except from GAYLZ, JERLD, VVEST, and WARMW.

MALSR



MISSED APPROACH: Climb to 2000 then climbing left turn to 4000 on heading 290° and MCI R-309 to BOWLW INT/MCI 29 DME and hold.

D-ATIS 128.375	KANSAS CITY APP CON 120.95 318.1	INTERNATIONAL TOWER 128.2 254.25	GND CON 121.8	CLNC DEL 135.7	CPDLC
--------------------------	--	--	-------------------------	--------------------------	-------



CATEGORY	A	B	C	D	E
S-ILS 1L	1214/18 200 (200-½)				
S-LOC 1L	1340/24	326 (400-½)	1340/26		326 (400-½)
CIRCLING	1540-1	513 (600-1)	1540-1½ 513 (600-1½)	1580-2	553 (600-2)

Knots	60	90	120	150	180
Min:Sec	5:42	3:48	2:51	2:17	1:54

NC-3, 22 FEB 2024 to 21 MAR 2024

NC-3, 22 FEB 2024 to 21 MAR 2024

LOC/DME I-PVL 110.75 Chan 44 (Y)	APP CRS 011°	Rwy Idg TDZE 9500 1017	Apt Elev 1027
--	------------------------	--	-------------------------

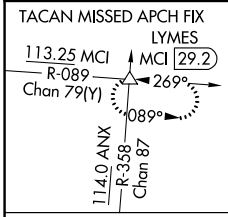
ILS or LOC RWY 1R

KANSAS CITY INTL (MCI)

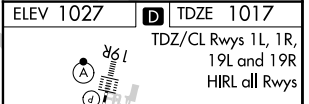
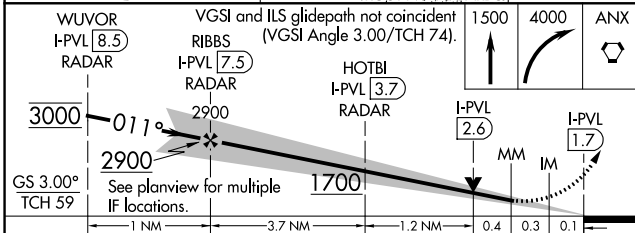
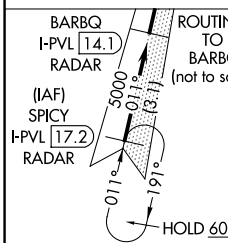
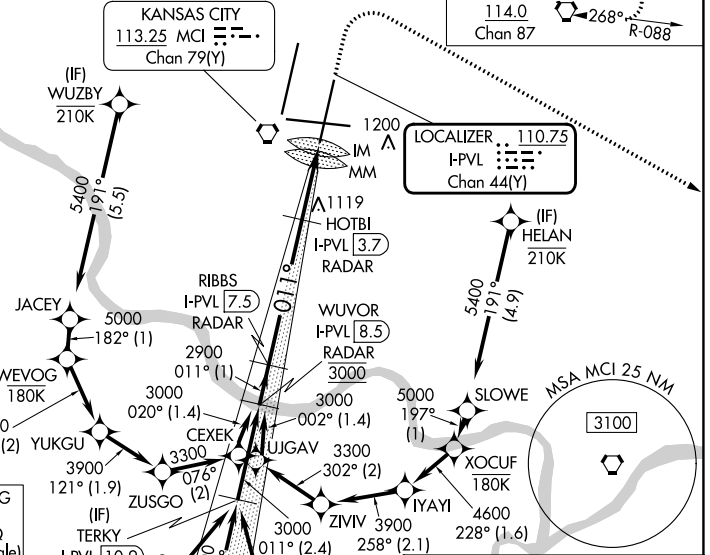
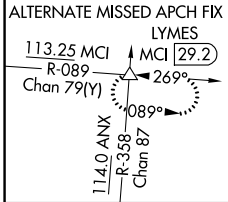
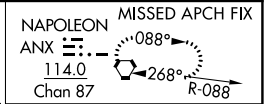
RNP APCH - GPS. From BAUNR or COOKD or WUZBY or HELAN.
DME or RADAR required. RADAR required for procedure entry at SPICY.
For inop ALS, increase S-ILS 1R Cat E visibility to RVR 4000 and S-LOC 1R Cat C/D/E visibility to RVR 5500. Simultaneous approach authorized except from BAUNR, COOKD, WUZBY, and HELAN.

ALSF-2
MISSED APPROACH: Climb to 1500 then climbing right turn to 4000 direct ANX VORTAC and hold. (TACAN aircraft) Climb to 1500 then climbing right turn to 4000 on heading 130° and MCI R-089 to LYMES INT/ MCI 29.2 DME and hold.

D-ATIS 128.375	KANSAS CITY APP CON 120.95 318.1	INTERNATIONAL TOWER 128.2 254.25	GND CON 121.8	CLNC DEL 135.7	CPDLC
--------------------------	--	---	-------------------------	--------------------------	-------



From BAUNR, COOKD, WUZBY, and HELAN transitions NA for Cat E.



CATEGORY	A	B	C	D	E
S-ILS 1R	1217/18 200 (200-½)				
S-LOC 1R	1360/24	343 (400-½)	1360/30		343 (400-¾)
CIRCLING	1540-1	513 (600-1)	1540-1½	1580-2	553 (600-2)

Knots	60	90	120	150	180
Min:Sec	5:42	3:48	2:51	2:17	1:54

FAF to MAP 5.7 NM

NC-3, 22 FEB 2024 to 21 MAR 2024

NC-3, 22 FEB 2024 to 21 MAR 2024

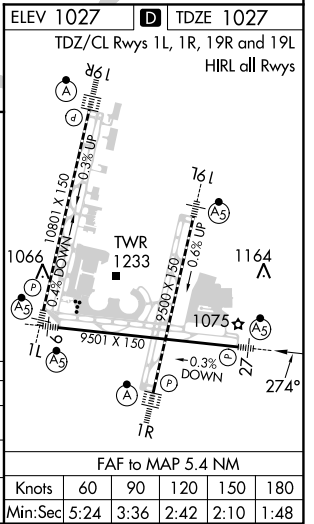
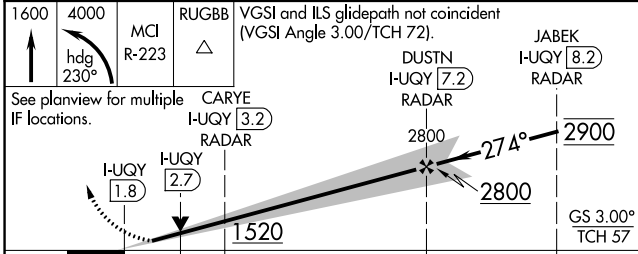
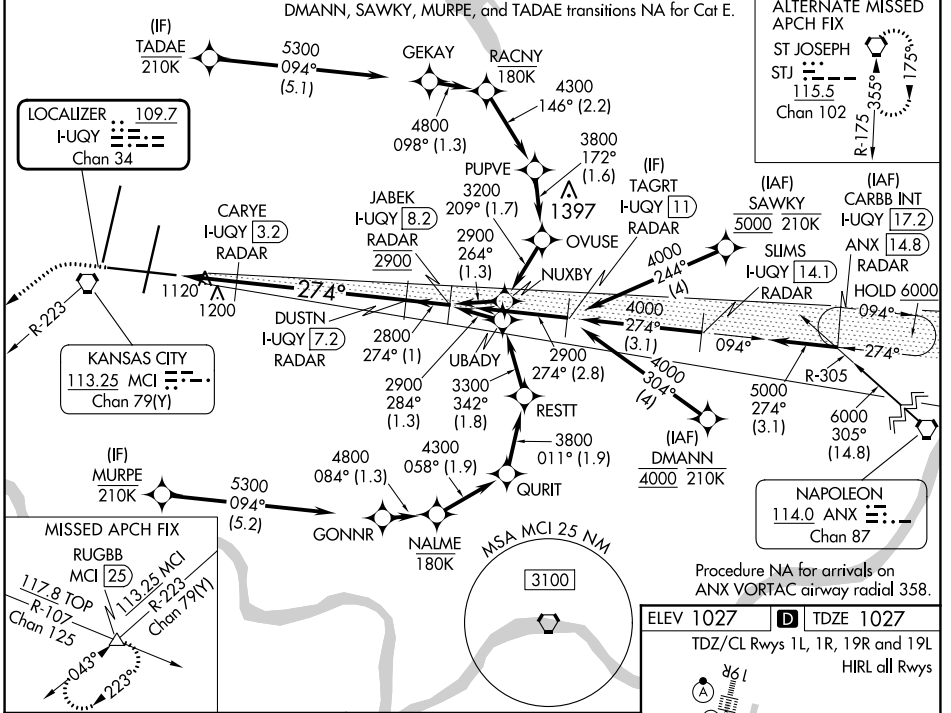
LOC/DME I-UGY 109.7 Chan 34	APP CRS 274°	Rwy Idg TDZE Apt Elev	9501 1027 1027
---	------------------------	-----------------------------	---

ILS or LOC RWY 27

KANSAS CITY INTL (MCI)

RNP APCH - GPS. From DMANN or SAWKY or MURPE or TADAE.		MALS R 	MISSED APPROACH: Climb to 1600 then climbing left turn to 4000 on heading 230° and MCI R-223 to RUGBB INT/MCI 25 DME and hold.
DME or RADAR required.			
<p>▼ For inop ALS, increase S-ILS 27 Cat E visibility to RVR 4000 and S-LOC 27 Cat C/D/E visibility to RVR 5500.</p> <p>*RVR 1800 authorized with use of FD or AP or HUD to DA.</p>			

D-ATIS 128.375	KANSAS CITY APP CON 120.95 318.1	INTERNATIONAL TOWER 128.2 254.25	GND CON 121.8	CLNC DEL 135.7	CPDLC
--------------------------	--	--	-------------------------	--------------------------	-------



CATEGORY	A	B	C	D	E
S-ILS 27*	1227/24 200 (200-½)				
S-LOC 27	1380/24	353 (400-½)	1380/30	353 (400-¾)	
CIRCLING	1540-1	513 (600-1)	1540-1½	513 (600-1½)	1580-2 553 (600-2)

NC-3, 22 FEB 2024 to 21 MAR 2024

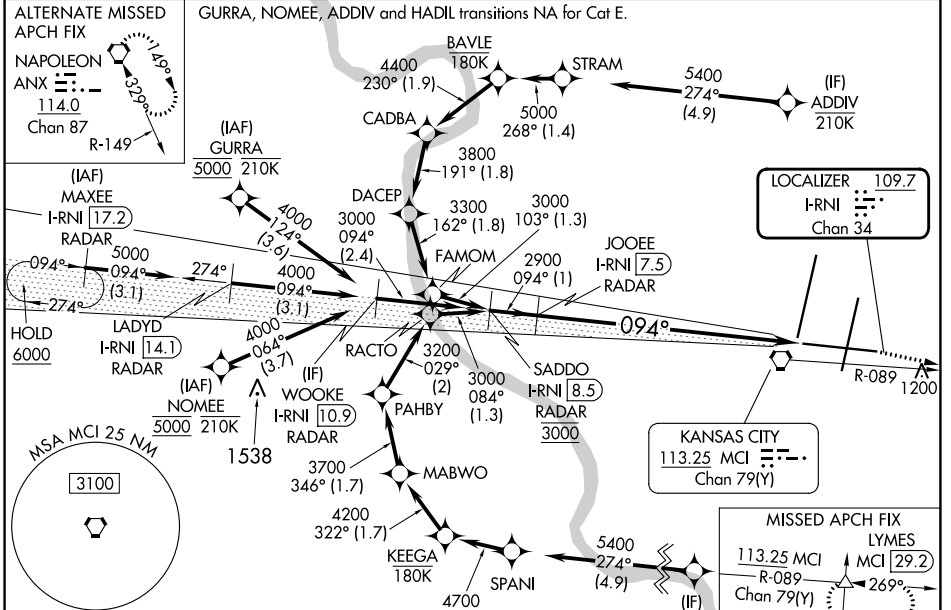
NC-3, 22 FEB 2024 to 21 MAR 2024

LOC/DME I-RNI 109.7 Chan 34	APP CRS 094°	Rwy Idg TDZE Apt Elev	9501 1016 1027
---	------------------------	-----------------------------	---

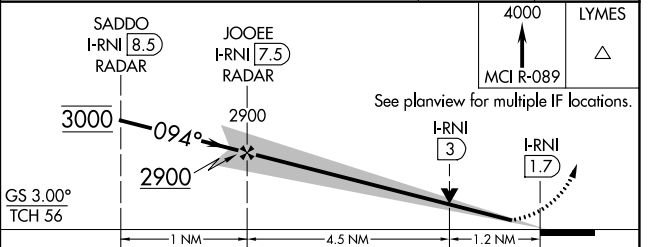
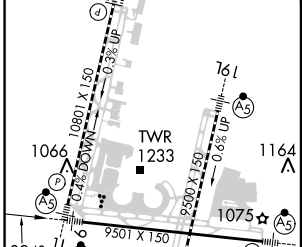
ILS or LOC RWY 9

KANSAS CITY INTL (MCI)

RNP APCH-GPS. From GURRA or NOMEIE or ADDIV or HADIL.		MALSR 	MISSED APPROACH: Climb to 4000 on MCI R-089 to LYMES INT/MCI 29.2 DME and hold.		
DME or RADAR required. RADAR required for procedure entry at MAXEE.					
<p>▼ Inop table does not apply to S-ILS 9. For inop ALS, increase S-LOC 9 Cats A/B visibility to RVR 5500 and S-LOC 9 Cat E visibility to 1 3/4 SM.</p>					
D-ATIS 128.375	KANSAS CITY APP CON 120.95 318.1	INTERNATIONAL TOWER 128.2 254.25	GND CON 121.8	CLNC DEL 135.7	CPDLC



ELEV 1027	TDZE 1016
TDZ/CL Rwys 1L, 1R, 19L and 19R	
HIRL all Rwys	



FAF to MAP 5.7 NM	
Knots	60 90 120 150 180
Min:Sec	5:42 3:48 2:51 2:17 1:54
CIRCLING	1540-1 513 (600-1) 1540-1 1/2 513 (600-1 1/2) 1580-2 553 (600-2)
S-ILS 9	1266/40 250 (300-3/4)
S-LOC 9	1460/40 444 (500-3/4) 1460/45 444 (500-3/4)

NC-3, 22 FEB 2024 to 21 MAR 2024

NC-3, 22 FEB 2024 to 21 MAR 2024


APP CRS	Rwy Idg	9500
191°	TDZE	995
	Apt Elev	1027

RNAV (RNP) Z RWY 19L

KANSAS CITY INTL (MCI)

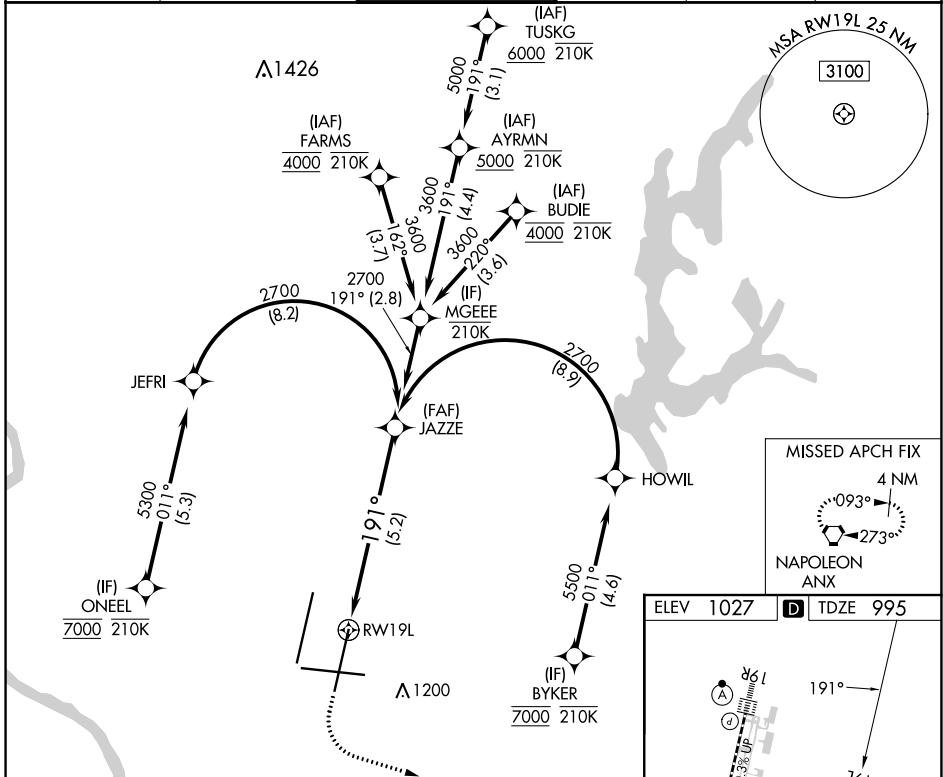
RNP AR APCH - GPS.

▼ Use of FD or AP required during simultaneous operations. For uncompensated Baro-VNAV systems, procedure NA below -21°C or above 54°C. Simultaneous approach authorized, except for arrivals at ONEEL, BYKER, FARMS and BUDIE. For inop ALS, increase RNP 0.20 all Cats visibility to RVR 4500 and RNP 0.30 all Cats visibility to RVR 5500.

MALSR 




MISSED APPROACH: Climb to 1500 then climbing left turn to 4000 direct ANX VORTAC and hold.

D-ATIS	KANSAS CITY APP CON	INTERNATIONAL TOWER	GND CON	CLNC DEL	CPDLC
128.375	120.95 318.1	128.2 254.25	121.8	135.7	



NC-3, 22 FEB 2024 to 21 MAR 2024

NC-3, 22 FEB 2024 to 21 MAR 2024

1500	4000	ANX	JAZZE
			2700
RW19L		2700	
See planview for multiple IF locations.		GP 3.00°	
-5.2 NM		TCH 59	
CATEGORY	A	B	C
RNP 0.20 DA		1310/24	315 (300-½)
RNP 0.30 DA		1365/35	370 (400-¾)

ELEV 1027 **D** TDZE 995

MISSED APCH FIX
4 NM
093°
273°
NAPOLEON ANX

HIRL all Rwws
TDZ/CL Rwws 1L, 1R, 19R and 19L

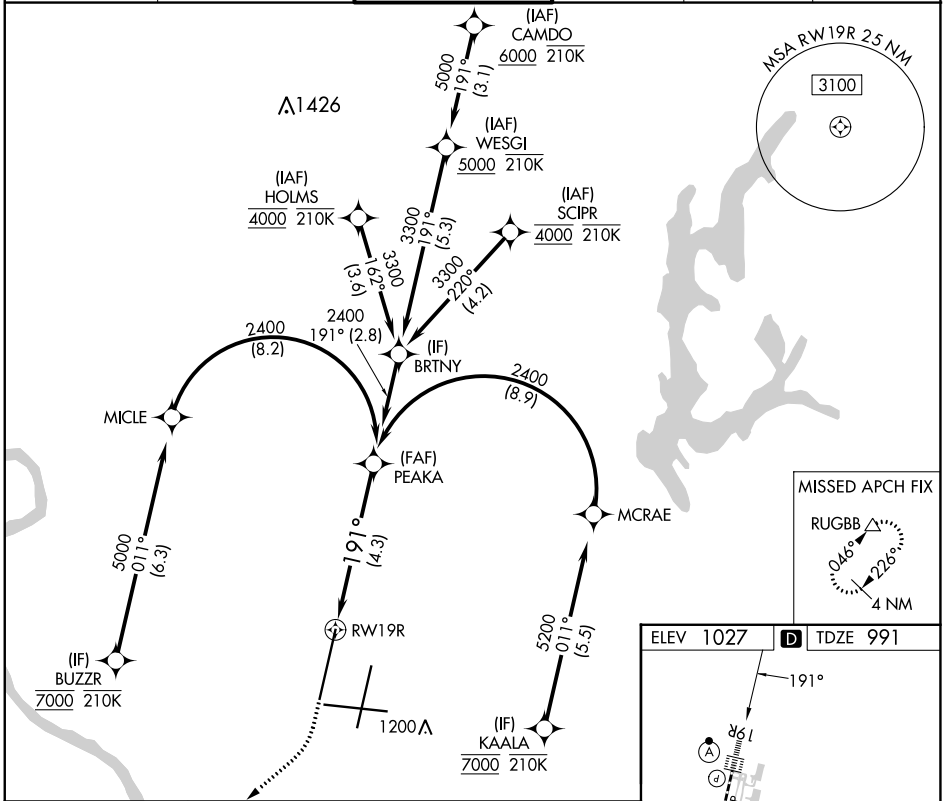
APP CRS	Rwy Idg	10801
191°	TDZE	991
	Apt Elev	1027

RNAV (RNP) Z RWY 19R

KANSAS CITY INTL (MCI)

RADAR required for procedure entry. RNP AR APCH - GPS.		ALSF-2 	MISSED APPROACH: Climb to 2000 then climbing right turn to 4000 direct RUGBB and hold.
<p>▼ For uncompensated Baro-VNAV systems, procedure NA below -21°C or above 54°C. Simultaneous approach authorized, except for arrivals at BUZZR, HOLMS, SCIPR, and KAALA. For inop ALS, increase RNP 0.15 all Cats visibility to RVR 4500 and RNP 0.30 all Cats visibility RVR 6000.</p>			

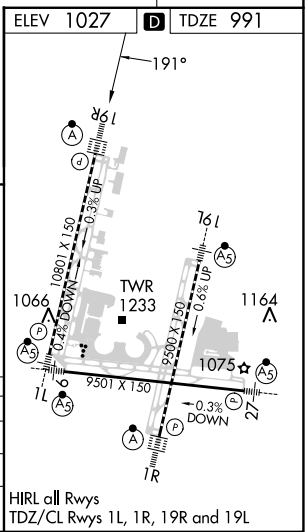
D-ATIS 128.375	KANSAS CITY APP CON 120.95 318.1	INTERNATIONAL TOWER 128.2 254.25	GND CON 121.8	CLNC DEL 135.7	CPDLC
--------------------------	--	--	-------------------------	--------------------------	-------



NC-3, 22 FEB 2024 to 21 MAR 2024

NC-3, 22 FEB 2024 to 21 MAR 2024

2000	4000	RUGBB	See planview for multiple IF locations. VGSI and RNAV glidepath not coincident (VGSI Angle 3.00/TCH 80).	PEAKA
				2400
RWY 19R		GP 3.00°		TCH 55
4.3 NM				
CATEGORY	A	B	C	D
RNP 0.15 DA		1287/24	296 (300-1/2)	
RNP 0.30 DA		1405/40	414 (400-3/4)	
AUTHORIZATION REQUIRED				



HIRL all Rwys
TDZ/CL Rwys 1L, 1R, 19R and 19L

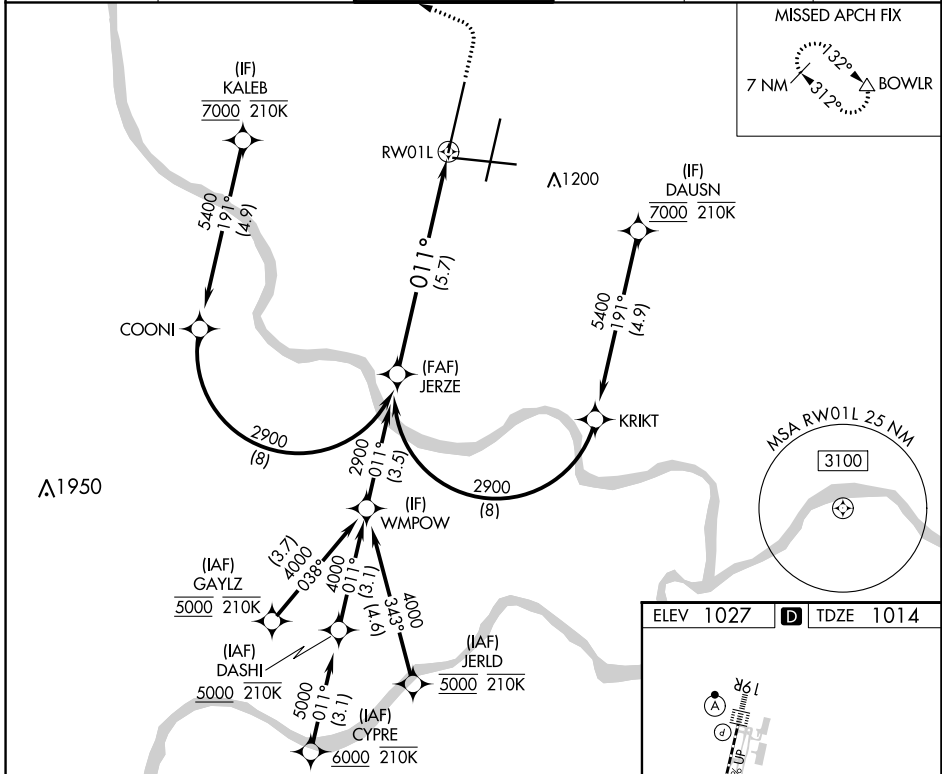
APP CRS	Rwy Idg	10801
011°	TDZE	1014
	Apt Elev	1027

RNAV (RNP) Z RWY 1L

KANSAS CITY INTL (MCI)

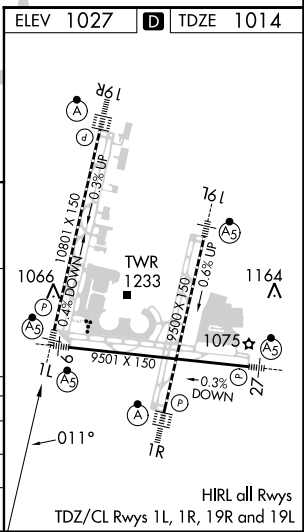
RNP AR APCH - GPS.		MALSR	MISSED APPROACH: Climb to 2000 then climbing left turn to 4000 direct BOWL R and hold.
<p>Use of FD or AP required during simultaneous operations. For uncompensated Baro-VNAV systems, procedure NA below -19°C or above 54°C. For inop ALS, increase RNP 0.10 all Cats visibility to RVR 4000 and RNP 0.30 all Cats visibility to RVR 6000. Simultaneous approach authorized, except for arrivals at KALEB, DAUSN, GAYLZ and JERLD.</p>			

D-ATIS	KANSAS CITY APP CON	INTERNATIONAL TOWER	GND CON	CLNC DEL	CPDLC
128.375	120.95 318.1	128.2 254.25	121.8	135.7	



NC-3, 22 FEB 2024 to 21 MAR 2024

NC-3, 22 FEB 2024 to 21 MAR 2024



<p>VGSI and RNAV glidepath not coincident (VGSI Angle 3.00/TCH 78).</p>		2000	4000	BOWL R
<p>GP 3.00° TCH 57</p>				
<p>See planview for multiple IF locations.</p>		<p>5.7 NM</p>		
CATEGORY	A	B	C	D
RNP 0.10 DA		1264/24	250 (300-½)	
RNP 0.30 DA		1418/40	404 (400-¾)	
AUTHORIZATION REQUIRED				

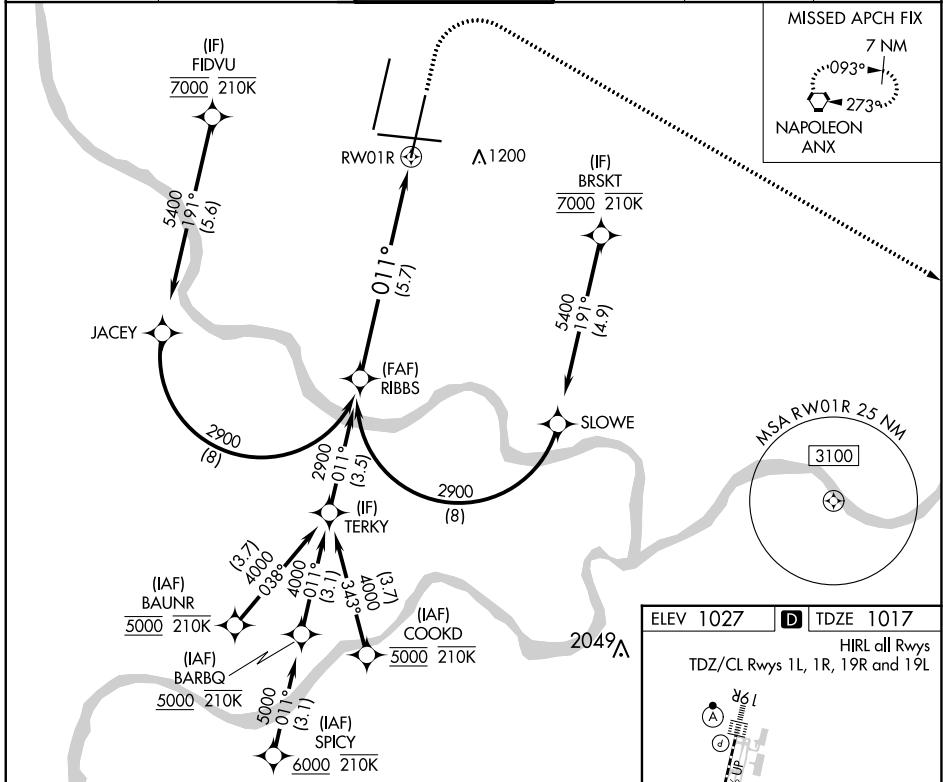
APP CRS	Rwy Idg	9500
011°	TDZE	1017
	Apt Elev	1027

RNAV (RNP) Z RWY 1R

KANSAS CITY INTL (MCI)

RNP AR APCH - GPS.		ALSF-2 	MISSED APPROACH: Climb to 1500 then climbing right turn to 4000 direct ANX VORTAC and hold.
<p>Use of FD or AP required during simultaneous operations. For uncompensated Baro-VNAV systems, procedure NA below -19°C or above 54°C. Simultaneous approach authorized, except for arrivals at FIDVU, BRSKT, BAUNR and COOKD. For inop ALS, increase RNP 0.30 all Cats visibility to RVR 4500.</p>			

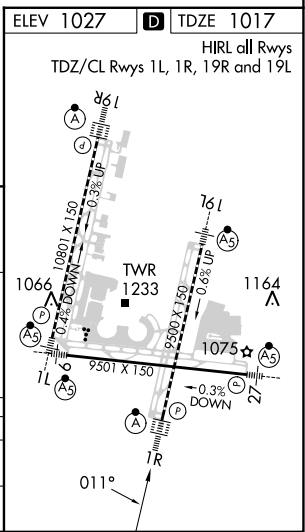
D-ATIS 128.375	KANSAS CITY APP CON 120.95 318.1	INTERNATIONAL TOWER 128.2 254.25	GND CON 121.8	CLNC DEL 135.7	CPDLC
--------------------------	--	--	-------------------------	--------------------------	-------



NC-3, 22 FEB 2024 to 21 MAR 2024

NC-3, 22 FEB 2024 to 21 MAR 2024

RIBBS VGS1 and RNAV glidepath not coincident (VGS1 Angle 3.00/TCH 74).		1500	4000	ANX
GP 3.00° TCH 59		See planview for multiple IF locations.		
CATEGORY	A	B	C	D
RNP 0.30 DA	1280/24		263 (300-1/2)	
AUTHORIZATION REQUIRED				

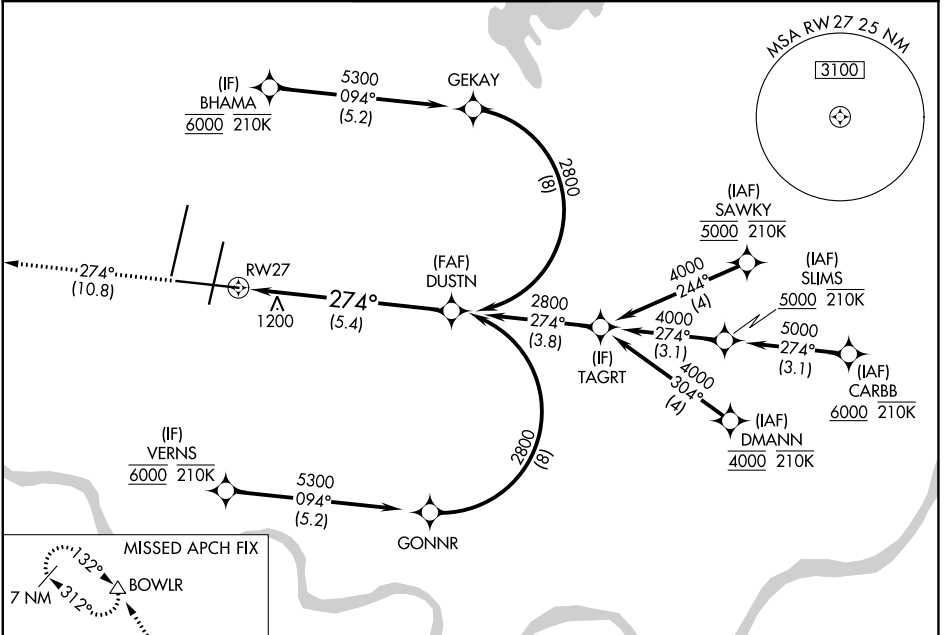


APP CRS	Rwy Idg	9501
274°	TDZE	1027
	Apt Elev	1027

RNAV (RNP) Z RWY 27

KANSAS CITY INTL (MCI)

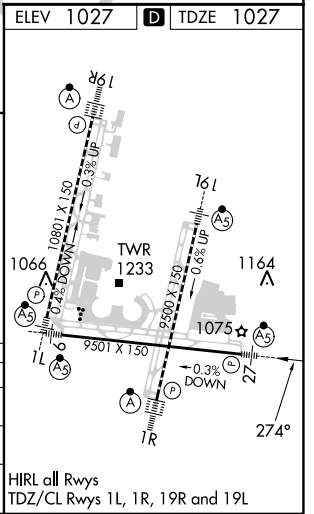
RADAR required for procedure entry. RNP AR APCH - GPS.			MALSR	MISSED APPROACH: Climb to 4000 on track 274° to WOOKIE and on track 325° to BOWL and hold.	
<p>▼ For uncompensated Baro-VNAV systems, procedure NA below -19°C or above 54°C. For inop ALS, increase RNP 0.15 all Cats visibility to RVR 5500 and RNP 0.30 all Cats visibility to 1 3/8 SM.</p>					
D-ATIS	KANSAS CITY APP CON	INTERNATIONAL TOWER	GND CON	CLNC DEL	CPDLC
128.375	120.95 318.1	128.2 254.25	121.8	135.7	



NC-3, 22 FEB 2024 to 21 MAR 2024

NC-3, 22 FEB 2024 to 21 MAR 2024

ELEV 1027		TDZE 1027	
4000	WOOKIE	tr 274°	
		tr 325°	
			BOWL
VGSI and RNAV glidepath not coincident (VGSI Angle 3.00/TCH 72).			
RW27		See planview for multiple IF locations.	
5.4 NM		GP 3.00° TCH 57	
CATEGORY	A	B	C
RNP 0.15 DA		1371/30	344 (400-%)
RNP 0.30 DA		1506/50	479 (500-1)
AUTHORIZATION REQUIRED			



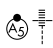
HIRL all Rwys
TDZ/CL Rwys 1L, 1R, 19R and 19L

RNAV (RNP) Z RWY 9 KANSAS CITY INTL (MCI)

APP CRS 094°	Rwy Idg 9501
	TDZE 1016
	Apt Elev 1027

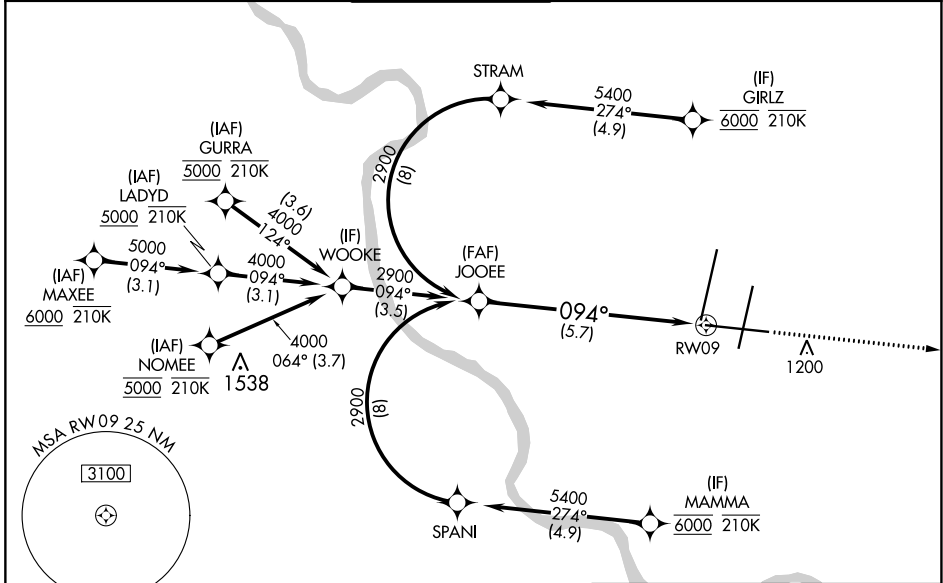
RNP AR APCH - GPS.

▼ For uncompensated Baro-VNAV systems, procedure NA below -19°C or above 54°C. For inop ALS, increase RNP 0.20 all Cats visibility to RVR 4500; increase RNP 0.30 all Cats visibility to RVR 6000.

MALSR 

MISSED APPROACH: Climb to 4000 direct DUSTN and on track 092° LYMES and hold.

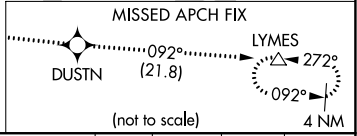
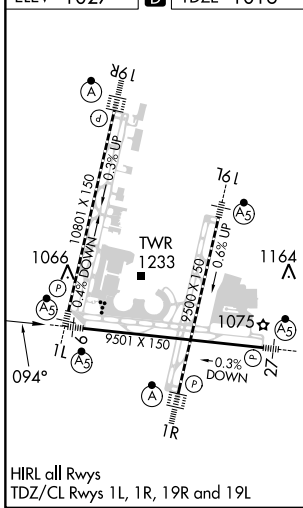
D-ATIS 128.375	KANSAS CITY APP CON 120.95 318.1	INTERNATIONAL TOWER 128.2 254.25	GND CON 121.8	CLNC DEL 135.7	CPDLC
--------------------------	--	--	-------------------------	--------------------------	-------



NC-3, 22 FEB 2024 to 21 MAR 2024

NC-3, 22 FEB 2024 to 21 MAR 2024

ELEV 1027	D	TDZE 1016
-----------	----------	-----------



JOOEE 2900 GP 3.00° TCH 56 5.7 NM RWY 9	4000	DUSTN	tr 092°	LYMES
	See planview for multiple IF locations.			
CATEGORY	A	B	C	D
RNP 0.20 DA	1319/24 303 (300-½)			
RNP 0.30 DA	1418/40 402 (400-¾)			
AUTHORIZATION REQUIRED				

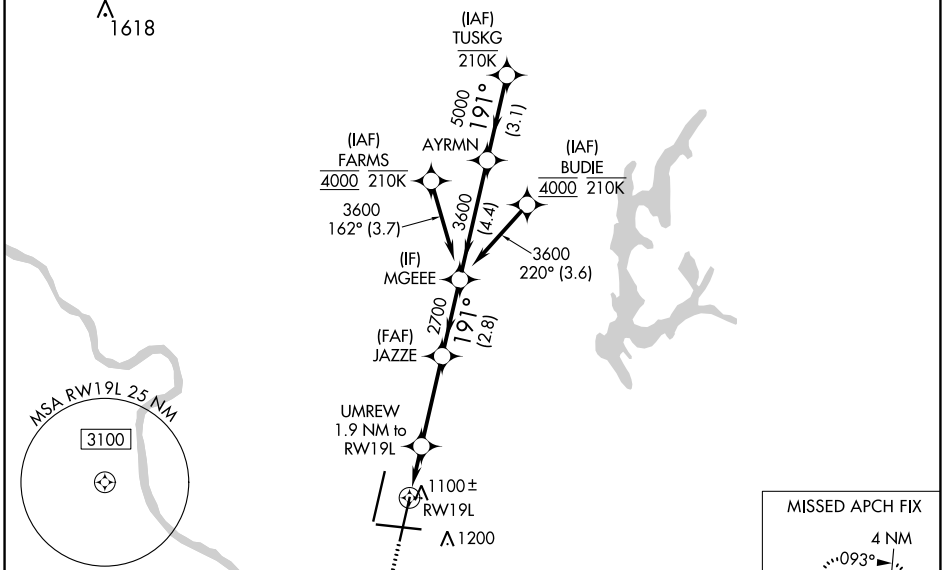
WAAS CH 82108 W19A	APP CRS 191°	Rwy Idg 9500 TDZE 995 Apt Elev 1027
--	------------------------	--

RNAV (GPS) Y RWY 19L

KANSAS CITY INTL (MCI)

RNP APCH - GPS. ▼ Use of FD or AP required during simultaneous operations. LNAV procedure NA during simultaneous operations. For uncompensated Baro-VNAV systems, LNAV/VNAV NA below -21°C or above 54°C. For inop ALS, increase LNAV/VNAV all Cats and LNAV Cats C/D visibility to RVR 5500. Simultaneous approach authorized except from BUDIE and FARMS.	MALSR 	MISSED APPROACH: Climb to 1500 then climbing left turn to 4000 direct ANX VORTAC and hold.
--	-----------	--

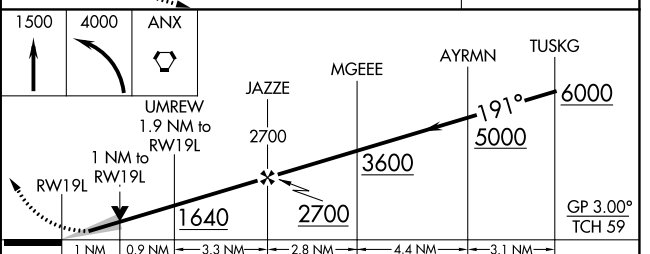
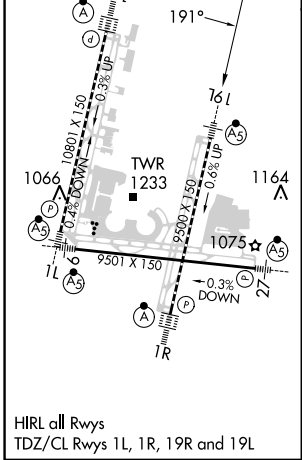
D-ATIS 128.375	KANSAS CITY APP CON 120.95 318.1	INTERNATIONAL TOWER 128.2 254.25	GND CON 121.8	CLNC DEL 135.7	CPDLC
--------------------------	--	--	-------------------------	--------------------------	-------



NC-3, 22 FEB 2024 to 21 MAR 2024

NC-3, 22 FEB 2024 to 21 MAR 2024

ELEV 1027	D	TDZE 995
------------------	----------	-----------------



CATEGORY	A	B	C	D
LPV DA		1195/18	200 (200-½)	
LNAV/VNAV DA		1365/35	370 (400-⅝)	
LNAV MDA	1360/24	365 (400-½)	1360/35	365 (400-⅝)
CIRCLING	1540-1	513 (600-1)	1540-1½ 513 (600-1½)	1580-2 553 (600-2)

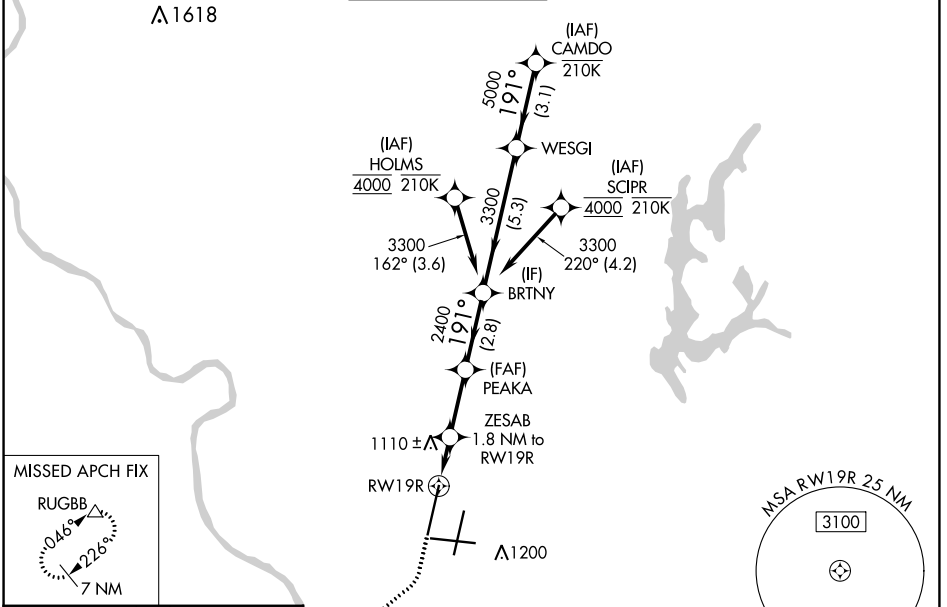
WAAS CH 72908 W19B	APP CRS 191°	Rwy Idg 10801 TDZE 991 Apt Elev 1027
--	------------------------	---

RNAV (GPS) Y RWY 19R

KANSAS CITY INTL (MCI)

RNP APCH - GPS.	ALSF-2 	MISSED APPROACH: Climb to 2000 then climbing right turn to 4000 direct RUGBB and hold.
▽ LNAV procedure NA during simultaneous operations. Use of FD or AP required during simultaneous operations. For uncompensated Baro-VNAV systems, LNAV/VNAV NA below -21°C or above 54°C. For inop ALS, increase LNAV Cats C/D visibility to RVR 5500. Simultaneous approach authorized except from SCRIP and HOLMS.		

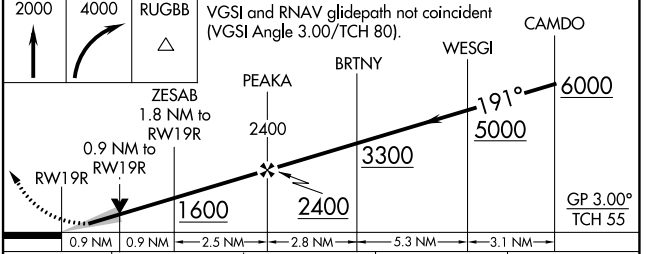
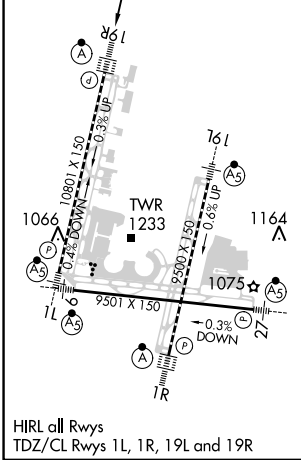
D-ATIS 128.375	KANSAS CITY APP CON 120.95 318.1	INTERNATIONAL TOWER 128.2 254.25	GND CON 121.8	CLNC DEL 135.7	CPDLC
--------------------------	--	--	-------------------------	--------------------------	-------



NC-3, 22 FEB 2024 to 21 MAR 2024

NC-3, 22 FEB 2024 to 21 MAR 2024

ELEV 1027	D	TDZE 991
-----------	----------	----------



CATEGORY	A	B	C	D
LPV DA		1191/18	200 (200-½)	
LNAV/VNAV DA		1417/40	426 (400-¾)	
LNAV MDA	1360/24	369 (400-½)	1360/35	369 (400-¾)
C CIRCLING	1540-1	513 (600-1)	1540-1½ 513 (600-1½)	1580-2 553 (600-2)

WAAS CH 42808 W01B	APP CRS 011°	Rwy Idg 10801 TDZE 1014 Apt Elev 1027
--	------------------------	--


RNAV (GPS) Y RWY 1L

KANSAS CITY INTL (MCI)

RNP APCH - GPS.

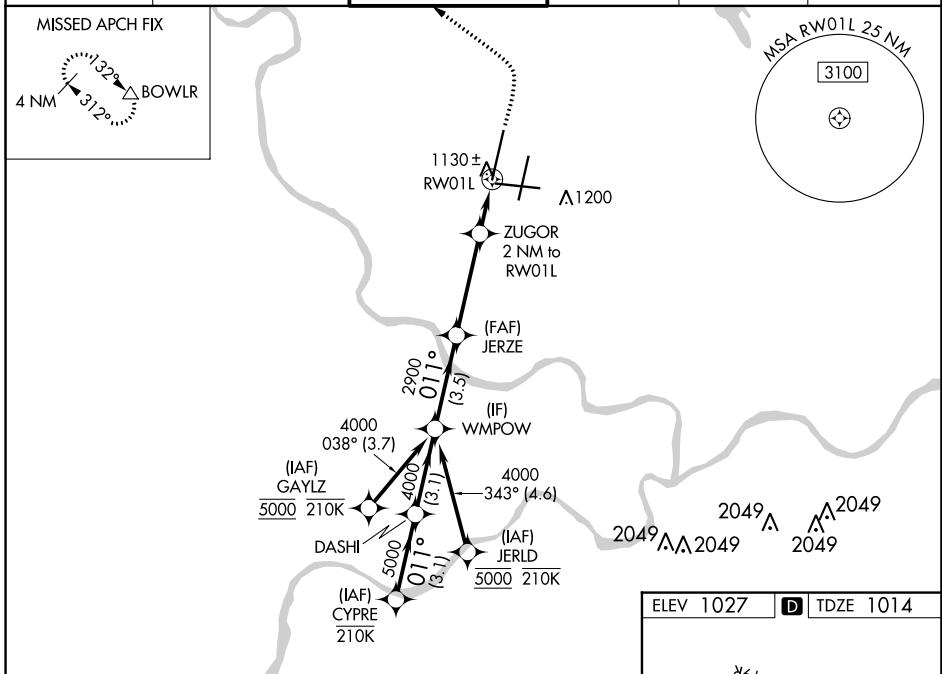
▼ Use of FD or AP required during simultaneous operations. LNAV procedure NA during simultaneous operations. For uncompensated Baro-VNAV systems, LNAV/VNAV NA below -19°C or above 54°C. For inop ALS, increase LNAV/VNAV all Cats visibility to RVR 4500 and LNAV Cats C/D visibility to RVR 5500. Simultaneous approach authorized except from GAYLZ and JERLD.

MALSR

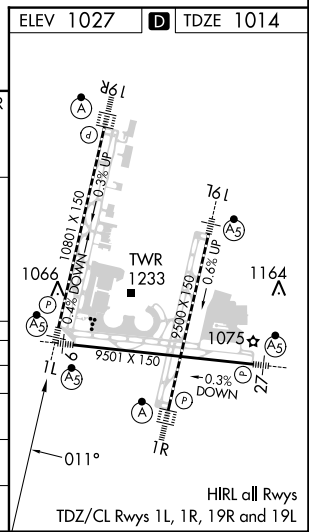


MISSED APPROACH: Climb to 2000 then climbing left turn to 4000 direct BOWL R and hold.

D-ATIS 128.375	KANSAS CITY APP CON 120.95 318.1	INTERNATIONAL TOWER 128.2 254.25	GND CON 121.8	CLNC DEL 135.7	CPDLC
--------------------------	--	--	-------------------------	--------------------------	-------



CYPRE	VGSI and RNAV glidepath not coincident (VGSI Angle 3.00/TCH 78).				2000	4000	BOWL R
	DASHI	WMPOW	JERZE	ZUGOR	2049		
6000	5000	4000	2900	1700	RWY 1L		
GP 3.00° TCH 57					0.9 NM to RWY 1L		
	~3.1 NM	~3.1 NM	~3.5 NM	~3.7 NM	~1.1 NM	0.9 NM	
CATEGORY	A	B	C	D			
LPV DA	1214/18		200 (200-½)				
LNAV/VNAV DA	1328/24		314 (400-½)				
LNAV MDA	1380/24 366 (400-½)		1380/35 366 (400-¾)				
CIRCLING	1540-1 513 (600-1)		1540-1½ 513 (600-1½)		1580-2 553 (600-2)		



NC-3, 22 FEB 2024 to 21 MAR 2024

NC-3, 22 FEB 2024 to 21 MAR 2024

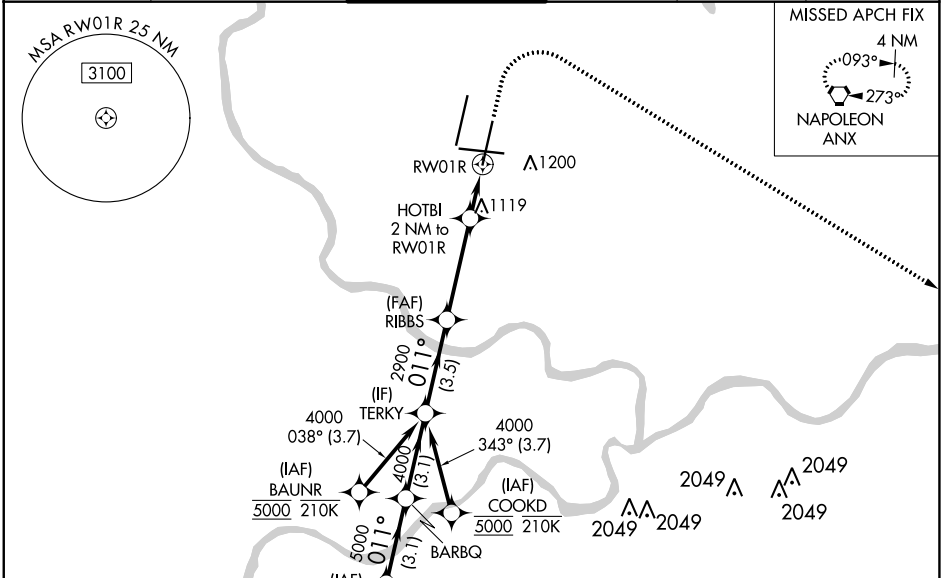
WAAS CH 58208 W01A	APP CRS 011°	Rwy Idg 9500 TDZE 1017 Apt Elev 1027
---------------------------------	------------------------	---

RNAV (GPS) Y RWY 1R

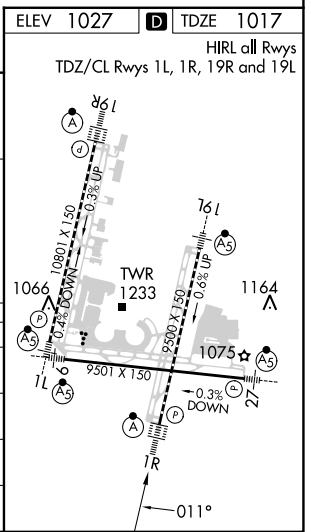
KANSAS CITY INTL (MCI)

RNP APCH - GPS.	ALSF-2	MISSED APPROACH: Climb to 1500 then climbing right turn to 4000 direct ANX VORTAC and hold.
-----------------	--------	---

D-ATIS 128.375	KANSAS CITY APP CON 120.95 318.1	INTERNATIONAL TOWER 128.2 254.25	GND CON 121.8	CLNC DEL 135.7	CPDLC
--------------------------	--	--	-------------------------	--------------------------	-------



SPICY		VGSI and RNAV glidepath not coincident (VGSI Angle 3.00/TCH 74).		1500	4000	ANX
6000		011°		↑	↘	⬡
5000		BARBQ				
4000		TERKY				
2900		RIBBS				
1700		HOTBI 2 NM to RWY 1R				
GP 3.00°		0.9 NM to RWY 1R				
TCH 59		RWY 1R				
-3.1 NM		-3.1 NM		-3.5 NM		-3.7 NM
CATEGORY		A		B		C
LPV	DA	1217/18		200 (200-½)		
RNAV/VNAV	DA	1311/24		294 (300-½)		
RNAV	MDA	1380/24		363 (400-½)		1380/35 363 (400-¾)
CIRCLING		1540-1 513 (600-1)		1540-1½ 513 (600-1½)		1580-2 553 (600-2)



NC-3, 22 FEB 2024 to 21 MAR 2024

NC-3, 22 FEB 2024 to 21 MAR 2024

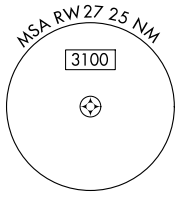
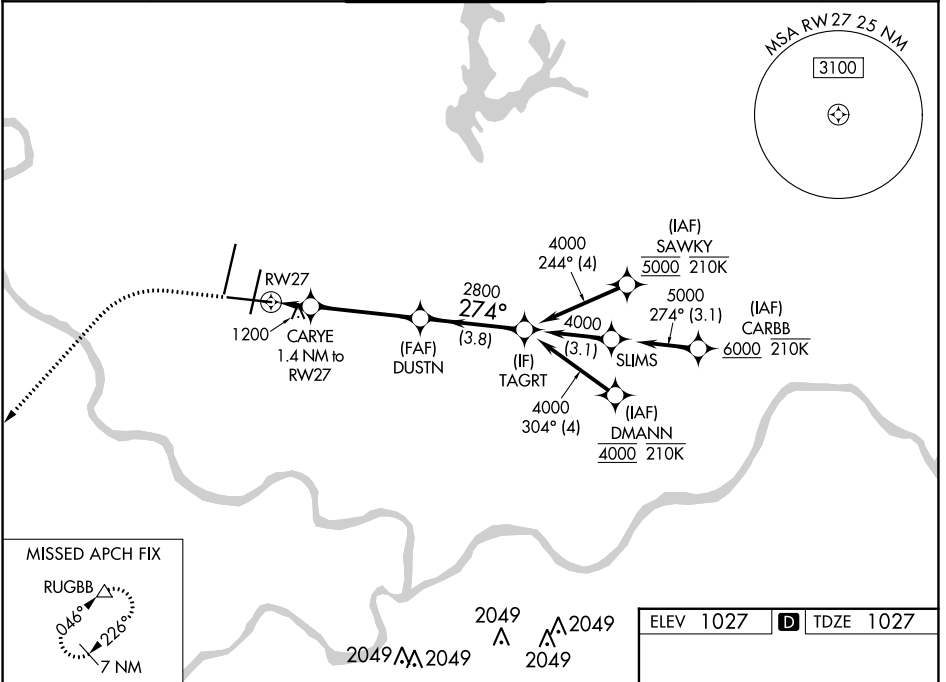
WAAS CH 82708 W27A	APP CRS 274°	Rwy Idg 9501 TDZE 1027 Apt Elev 1027
--	------------------------	---

RNAV (GPS) Y RWY 27

KANSAS CITY INTL (MCI)

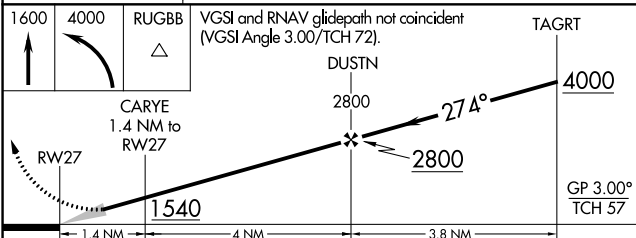
RNP APCH - GPS. ▼ For uncompensated Baro-VNAV systems, LNAV/VNAV NA below -19°C or above 54°C. For inop ALS, increase LNAV/VNAV all Cats to 1½ SM. *RVR 1800 authorized with use of FD or AP or HUD to DA.	MALSR 	MISSED APPROACH: Climb to 1600 then climbing left turn to 4000 direct RUGBB and hold.
--	-----------	---

D-ATIS 128.375	KANSAS CITY APP CON 120.95 318.1	INTERNATIONAL TOWER 128.2 254.25	GND CON 121.8	CLNC DEL 135.7	CPDLC
--------------------------	--	--	-------------------------	--------------------------	-------

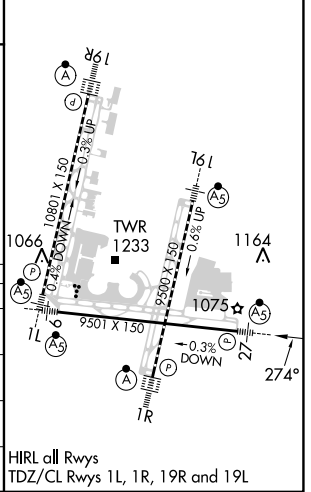


NC-3, 22 FEB 2024 to 21 MAR 2024

NC-3, 22 FEB 2024 to 21 MAR 2024



ELEV 1027	D TDZE 1027
-----------	--------------------



CATEGORY	A	B	C	D
LPV DA*		1227/24	200 (200-½)	
LNAV/VNAV DA		1496/50	469 (500-1)	
LNAV MDA	1460/24	433 (500-½)	1460/40	433 (500-¾)
C CIRCLING	1540-1	513 (600-1)	1540-1½ 513 (600-1½)	1580-2 553 (600-2)

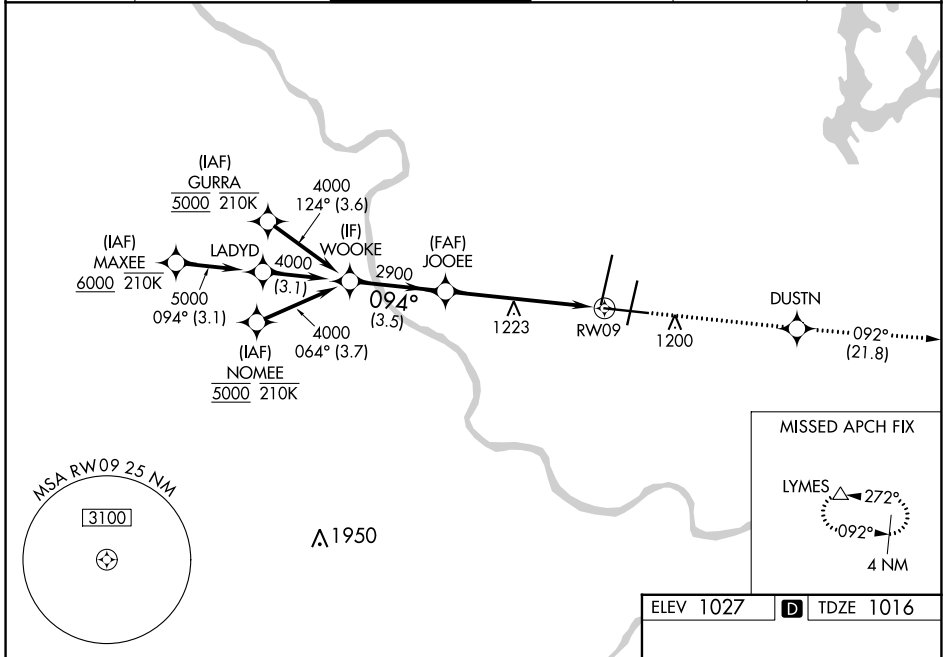
HIRL all Rwys
TDZ/CL Rws 1L, 1R, 19R and 19L

WAAS CH 56608 W09A	APP CRS 094°	Rwy Idg TDZE Apt Elev	9501 1016 1027
--	------------------------	-----------------------------	---

RNAV (GPS) Y RWY 9

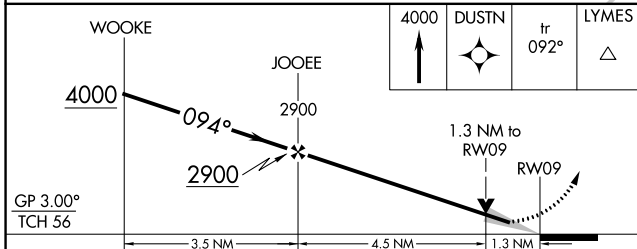
KANSAS CITY INTL (MCI)

RNP APCH - GPS.		MISSED APPROACH: Climb to 4000 direct DUSTN and on track 092° to LYMES and hold.	
▼ For uncompensated Baro-VNAV systems, LNAV/VNAV NA below -19°C or above 54°C. For inop ALS, increase LPV all Cats and LNAV/VNAV all Cats visibility to RVR 4500, and increase LNAV Cats C/D visibility to 1 3/8 SM.		MALSR	
D-ATIS 128.375	KANSAS CITY APP CON 120.95 318.1	INTERNATIONAL TOWER 128.2 254.25	GND CON 121.8
		CLNC DEL 135.7	CPDLC



NC-3, 22 FEB 2024 to 21 MAR 2024

NC-3, 22 FEB 2024 to 21 MAR 2024



CATEGORY	A	B	C	D
LPV DA	1316/40		300 (300-3/4)	
LNAV/VNAV DA	1319/40		303 (300-3/4)	
LNAV MDA	1480/24	464 (500-1/2)	1480/50	464 (500-1)
CIRCLING	1540-1	513 (600-1)	1540-1 1/2 513 (600-1 1/2)	1580-2 553 (600-2)

