

WAAS CH <b>99529</b> <b>W26A</b>	APP CRS <b>262°</b>	Rwy Idg TDZE Apt Elev	<b>3501</b> <b>741</b> <b>741</b>
--	------------------------	-----------------------------	---

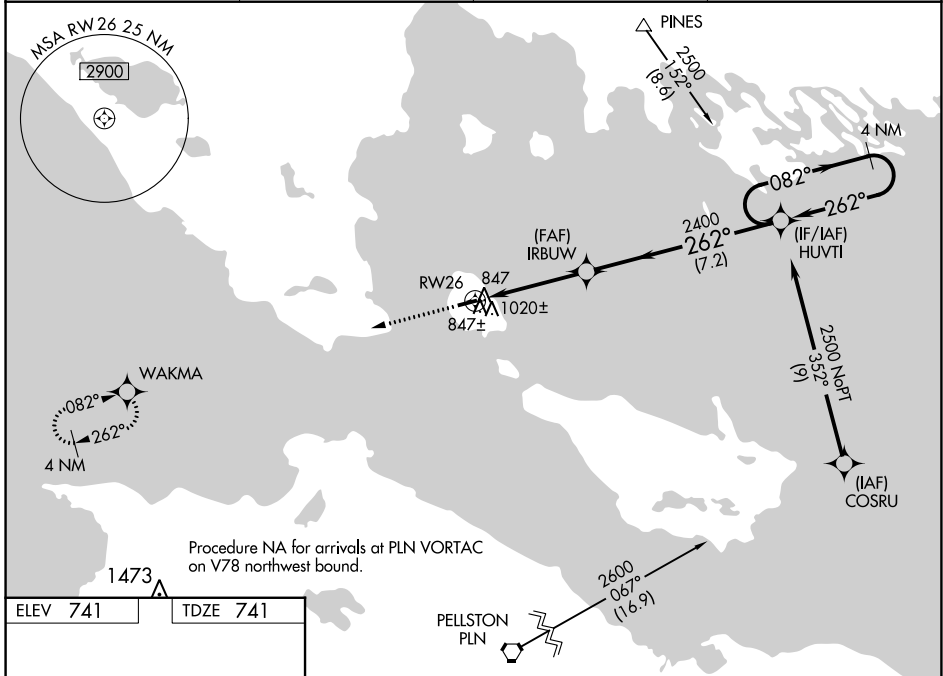
# RNAV (GPS) RWY 26

MACKINAC ISLAND (MCD)

**⚠** Baro-VNAV NA when using Pellston altimeter setting. For uncompensated Baro-VNAV systems, LNAV/VNAV NA below -16°C (4°F) or above 54°C (130°F). When local altimeter setting not received, use Pellston altimeter setting and increase all DA 47 feet and all MDA 60 feet, increase LNAV Cat C visibility 1/8 mile and Circling Cat C visibility 1/4 mile. DME/DME RNP-0.3 NA. Helicopter visibility reduction below 1 SM NA. Night landing: Rwy 8 NA.

**MISSED APPROACH:**  
Climb to 2500 direct WAKMA and hold.

AWOS-3 <b>118.275</b>	MINNEAPOLIS CENTER <b>134.6 354.05</b>	UNICOM <b>122.7 (CTAF)</b>	<b>122.80</b>
--------------------------	---	-------------------------------	---------------



ELEV 741 TDZE 741

MIRL Rwy 8-26 **1**  
REIL Rwy 8 and 26 **1**

2500	WAKMA	4 NM Holding Pattern		
IRBUW	HUVTI	GP 3.70° TCH 40		
4.1 NM	7.2 NM			
CATEGORY	A	B	C	D
LPV DA	1058-1	317 (400-1)	NA	
LNAV/VNAV DA	1182-1 <sup>3</sup> / <sub>8</sub>	441 (500-1 <sup>3</sup> / <sub>8</sub> )	NA	
LNAV MDA	1280-1	539 (600-1)	1280-1 <sup>1</sup> / <sub>2</sub> 539 (600-1 <sup>1</sup> / <sub>2</sub> )	NA
<b>C</b> CIRCLING	1320-1	579 (600-1)	1320-1 <sup>1</sup> / <sub>2</sub> 579 (600-1 <sup>1</sup> / <sub>2</sub> )	NA

WAAS CH <b>63129</b> <b>W08A</b>	APP CRS <b>082°</b>	Rwy Idg <b>3501</b> TDZE <b>739</b> Apt Elev <b>741</b>
--	------------------------	---

# RNAV (GPS) RWY 8

MACKINAC ISLAND (MCD)

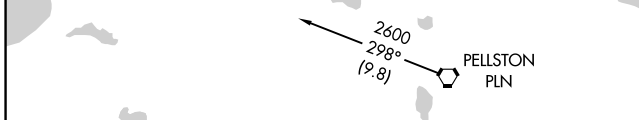
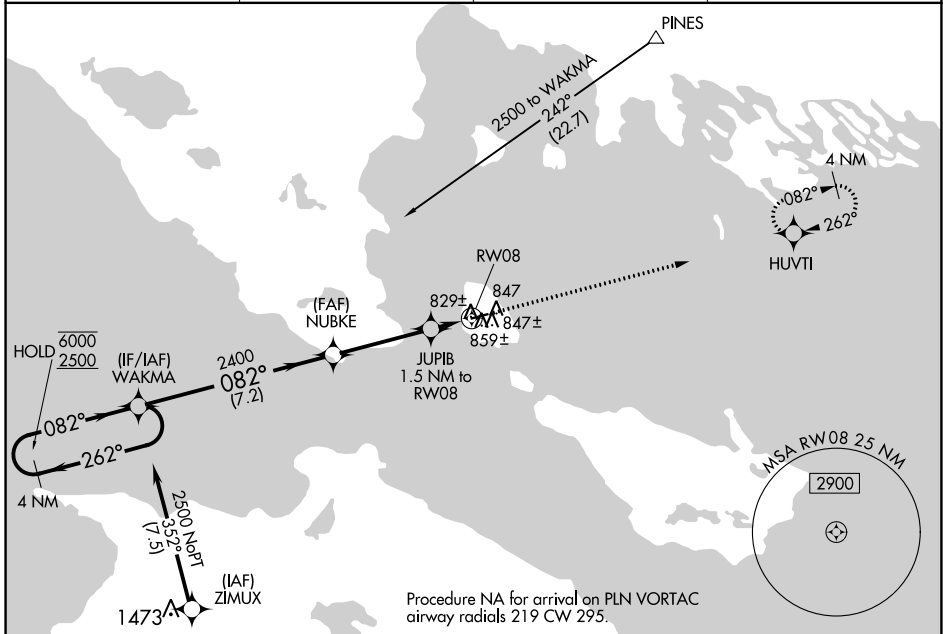
RNP APCH.

**▼** Rwy 8 helicopter visibility reduction below 1 SM NA. When local altimeter setting not received, use Pellston altimeter setting and increase all MDA 60 feet, increase LP and LNAV Cat C visibility 1/8 SM and Circling Cat C visibility 1/4 SM. Straight-in and Circling Rwy 8 NA at night.

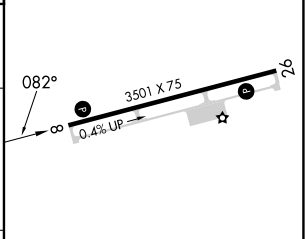
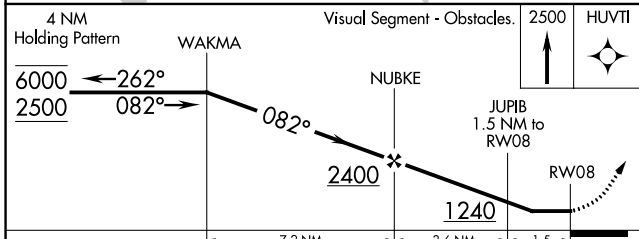
**▲**

MISSED APPROACH:  
Climb to 2500 direct HUVTI and hold.

AWOS-3 <b>118.275</b>	MINNEAPOLIS CENTER <b>134.6 354.05</b>	UNICOM <b>122.7 (CTAF)</b>	<b>122.8</b>
--------------------------	---	-------------------------------	--------------



ELEV 741	TDZE 739
----------	----------



CATEGORY	A	B	C	D
LP MDA	1080-1 341 (400-1)			NA
LNAV MDA	1120-1	381 (400-1)	1120-1 1/8 381 (400-1 1/8)	NA
<b>C</b> CIRCLING	1320-1	579 (600-1)	1320-1 1/2 579 (600-1 1/2)	NA

MIRL Rwy 8-26 **1**  
REIL Rwy 8 and 26 **1**

EC-1, 22 FEB 2024 to 21 MAR 2024

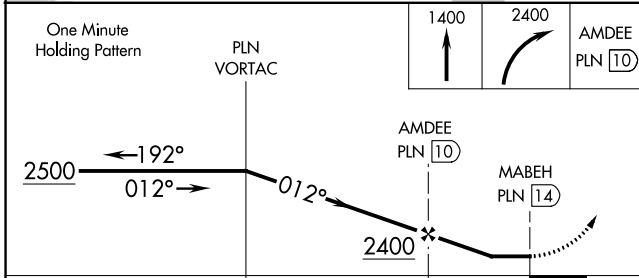
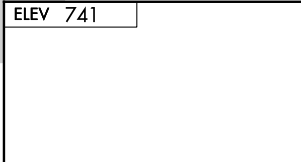
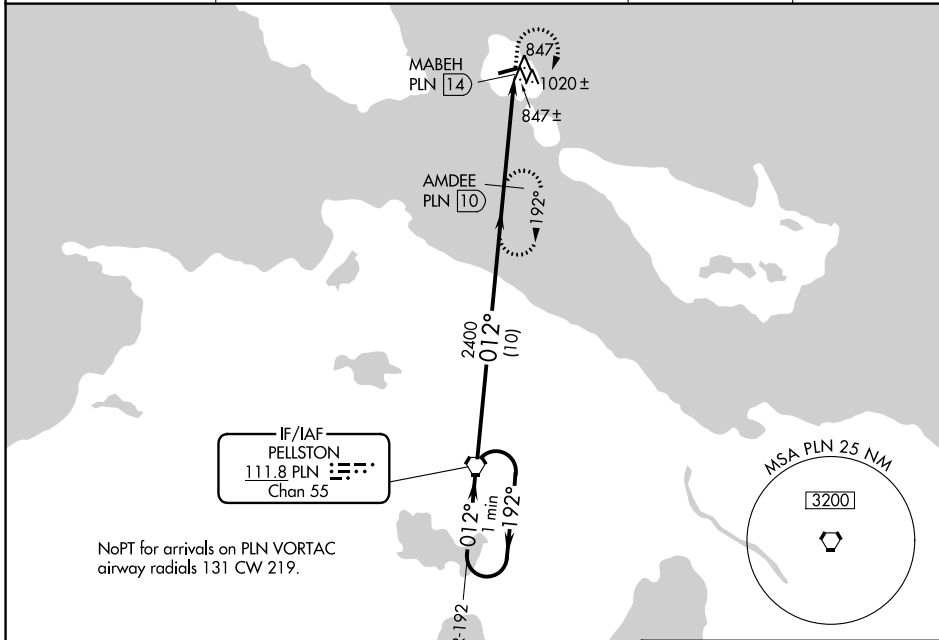
EC-1, 22 FEB 2024 to 21 MAR 2024

VORTAC PLN <b>111.8</b> Chan 55	APP CRS <b>012°</b>	Rwy Idg TDZE Apt Elev <b>N/A</b> <b>N/A</b> <b>741</b>
---------------------------------------	------------------------	---

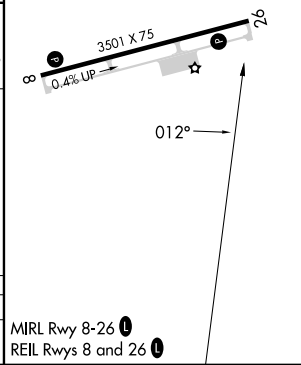
**VOR/DME-A**  
MACKINAC ISLAND (MCD)

<p>⚠ When local altimeter setting not received, use Pellston altimeter setting and increase all MDA 60 feet, increase Cat C visibility ¼ mile.                  ⚠ Visibility reduction by helicopters NA. Night landing: Rwy 8 NA.</p>	<p>MISSED APPROACH: Climb to 1400 then climbing right turn to 2400 direct AMDEE 10 DME and hold.</p>
--	--

AWOS-3 <b>118.275</b>	MINNEAPOLIS CENTER <b>134.6 354.05</b>	UNICOM <b>122.7 (CTAF)</b>	<b>122.8</b>
--------------------------	---	-------------------------------	--------------



CATEGORY	A	B	C	D
CIRCLING	1320-1	579 (600-1)	1320-1½ 579 (600-1½)	NA



EC-1, 22 FEB 2024 to 21 MAR 2024

EC-1, 22 FEB 2024 to 21 MAR 2024