

SAGINAW, MICHIGAN

AL-648 (FAA)

24025

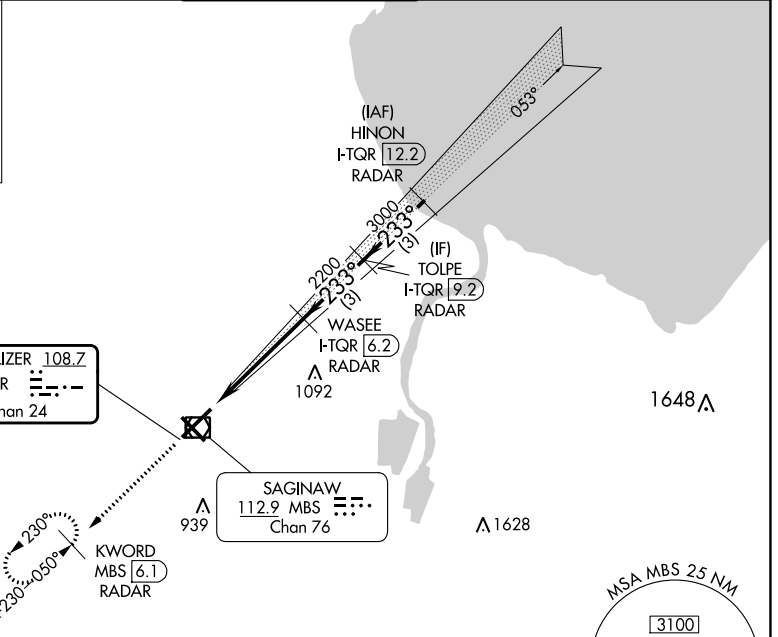
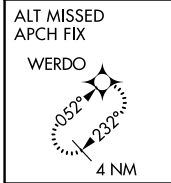
LOC/DME I-TQR 108.7 Chan 24	APP CRS 233°	Rwy Idg 8002 TDZE 661 Apt Elev 668
--	------------------------	---

ILS or LOC RWY 23

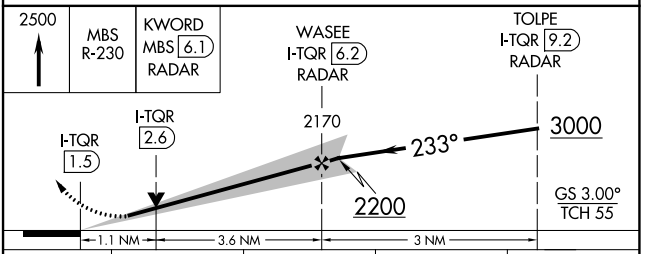
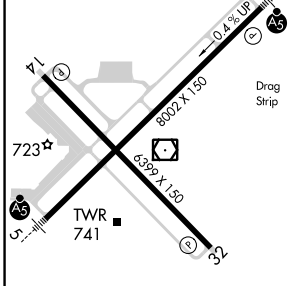
MBS INTL (MBS)

DME or RADAR required. RADAR required for procedure entry.	MALSR	MISSED APPROACH: Climb to 2500 on MBS VOR/DME R-230 to KWORD/MBS 6.1 DME/RADAR and hold.
*RVR 1800 authorized with use of FD or AP or HUD to DA.		

ATIS 125.925	GREAT LAKES APP CON * 126.45 235.625	SAGINAW TOWER * 120.1(CTAF) 257.7	GND CON 121.7	CLNC DEL 121.85	UNICOM 122.95
------------------------	--	---	-------------------------	---------------------------	-------------------------



ELEV 668	D	TDZE 661
----------	----------	----------



REIL Rwy 14 and 32

HIRL Rwy 5-23 and 14-32

FAF to MAP 4.7 NM

Knots	60	90	120	150	180
Min:Sec	4:42	3:08	2:21	1:53	1:34

CATEGORY	A	B	C	D
S-ILS 23 *	861/24 200 (200-1/2)			
S-LOC 23	1060/24 399 (400-1/2)	1060/35 399 (400-3/4)		
CIRCLING	1080-1 412 (500-1)	1120-1 452 (500-1)	1240-1 1/2 572 (600-1/2)	1240-2 572 (600-2)

SAGINAW, MICHIGAN
Amdt 5A 25JAN24

43°32'N-84°05'W

MBS INTL (MBS) ILS or LOC RWY 23

EC-1, 22 FEB 2024 to 21 MAR 2024

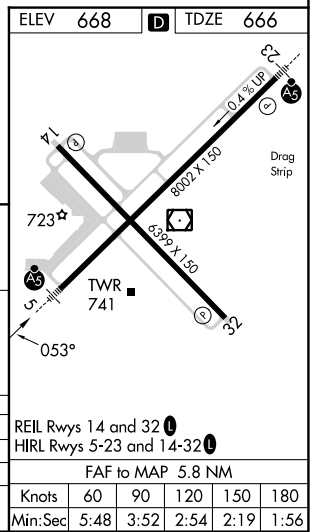
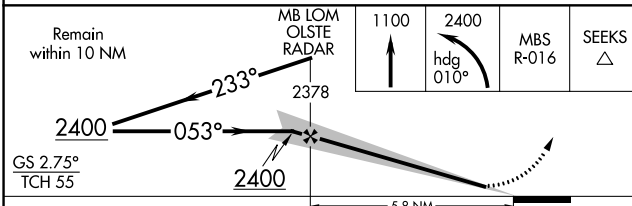
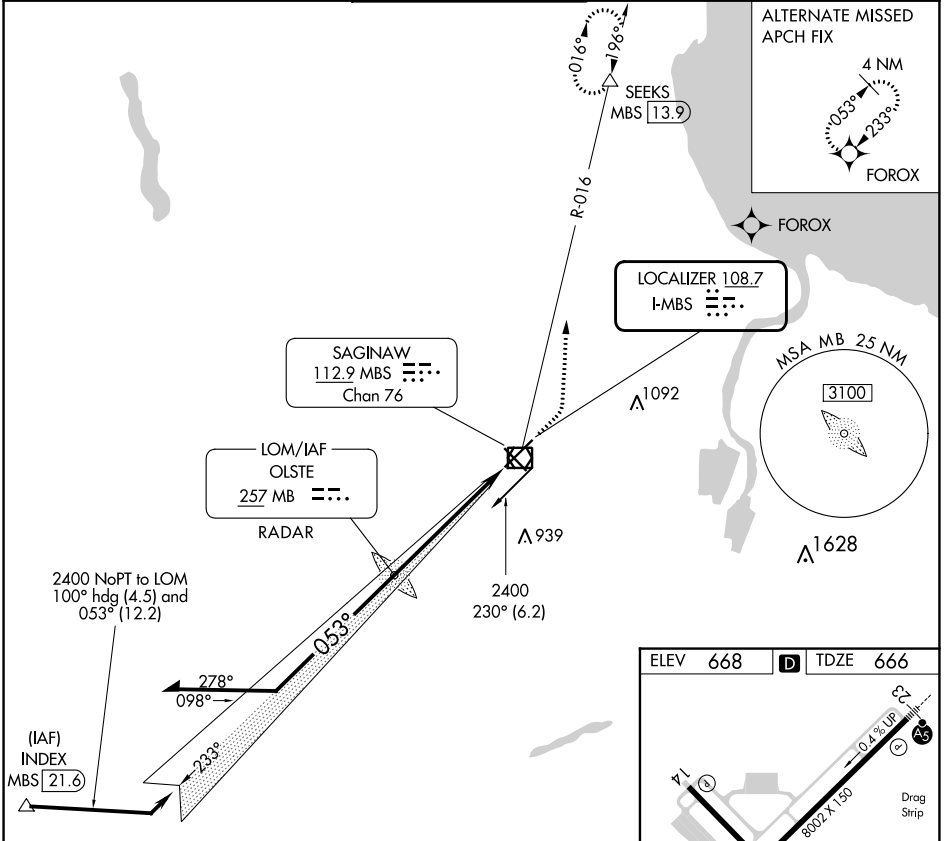
EC-1, 22 FEB 2024 to 21 MAR 2024

LOC I-MBS 108.7	APP CRS 053°	Rwy Idg TDZE Apt Elev	8002 666 668
---------------------------	------------------------	-----------------------------	---

ILS or LOC RWY 5

MBS INTL (MBS)

DME required.		MALSR	MISSED APPROACH: Climb to 1100 then climbing left turn to 2400 on heading 010° and MBS VOR/DME R-016 to SEEKS/MBS 13.9 DME and hold.					
<p>▽ * RVR 1800 authorized with use of FD or AP or HUD to DA.</p> <p>▲</p>			ATIS 125.925	GREAT LAKES APP CON * 126.45 235.625	SAGINAW TOWER * 120.1 (CTAF) 257.7	GND CON 121.7	CLNC DEL 121.85	UNICOM 122.95



REIL Rwy 14 and 32	1100/24				866/24				200 (200-½)			
HIRL Rwy 5-23 and 14-32	1100/40				1100/40				434 (500-¾)			
FAF to MAP 5.8 NM	1100-1				1120-1				1240-1½			
	432 (500-1)				452 (500-1)				572 (600-1½)			
	1240-2				572 (600-2)							

EC-1, 22 FEB 2024 to 21 MAR 2024

EC-1, 22 FEB 2024 to 21 MAR 2024

WAAS CH 69211 W14A	APP CRS 143°	Rwy Idg TDZE Apt Elev	6399 668 668
--	------------------------	-----------------------------	---

RNAV (GPS) RWY 14

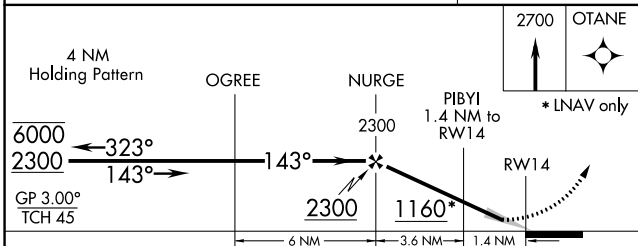
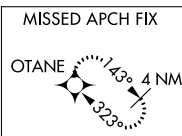
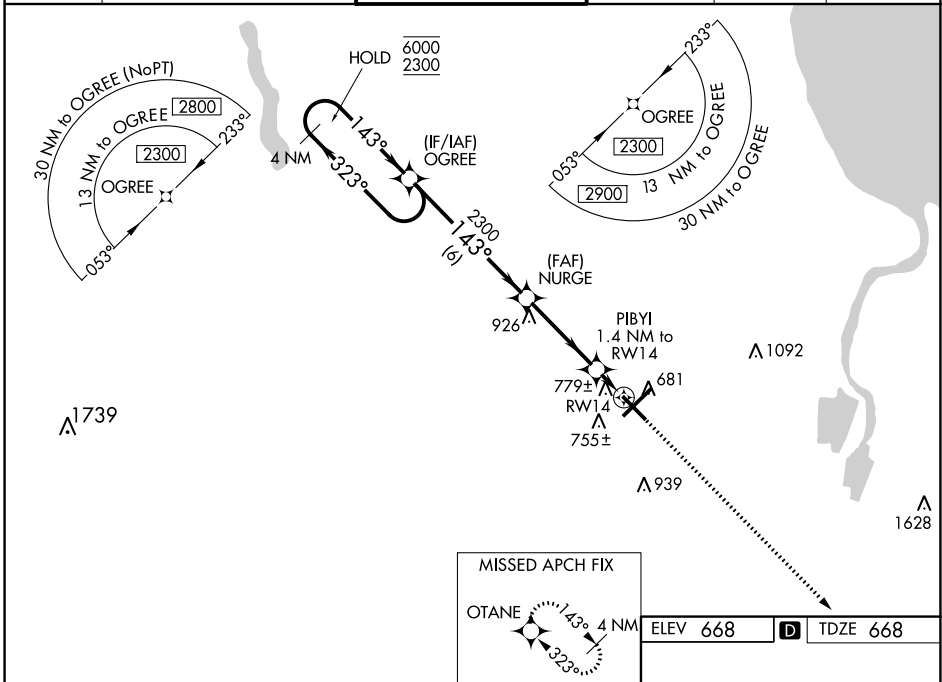
MBS INTL (MBS)

RNP APCH.

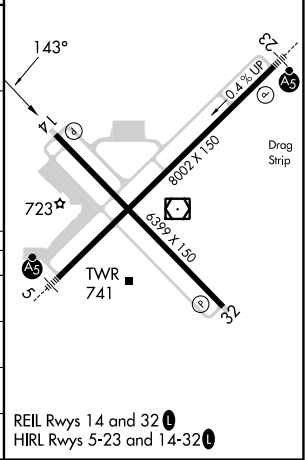
▼ For uncompensated Baro-VNAV systems, LNAV/VNAV NA below -18°C or above 54°C.

MISSED APPROACH: Climb to 2700 direct OTANE and hold.

ATIS 125.925	GREAT LAKES APP CON * 126.45 235.625	SAGINAW TOWER * 120.1 (CTAF) 257.7	GND CON 121.7	CLNC DEL 121.85	UNICOM 122.95
------------------------	--	--	-------------------------	---------------------------	-------------------------



CATEGORY	A	B	C	D
LPV DA		868-¾	200 (200-¾)	
LNAV/VNAV DA		960-7/8	292 (300-7/8)	
LNAV MDA		1040-1	372 (400-1)	
CIRCLING	1080-1 412 (500-1)	1120-1 452 (500-1)	1240-1½ 572 (600-1½)	1240-2 572 (600-2)




EC-1, 22 FEB 2024 to 21 MAR 2024

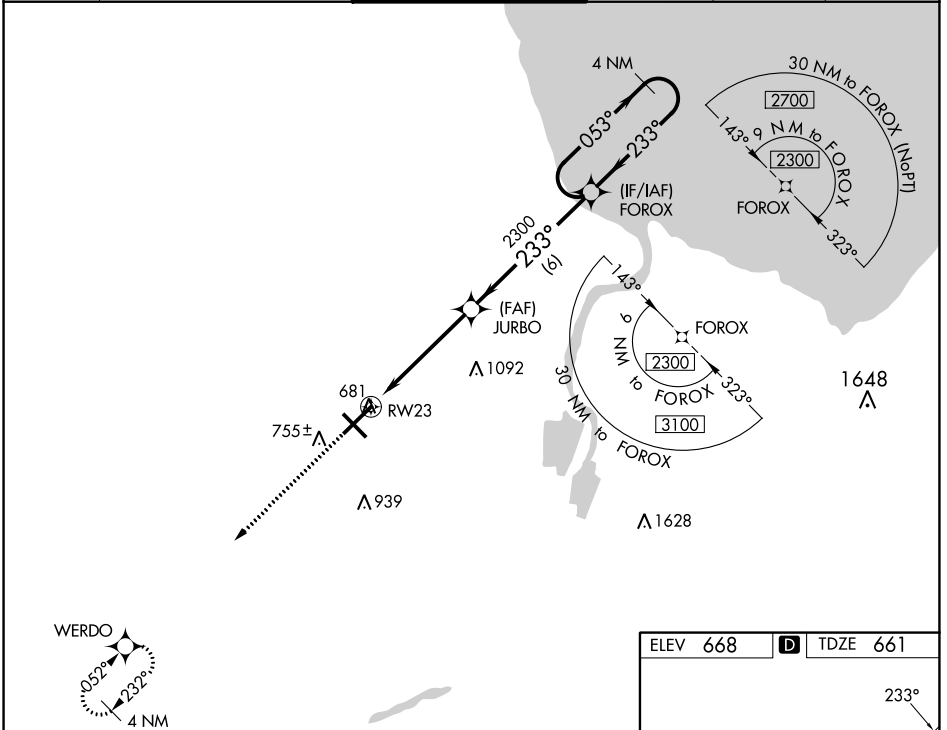
EC-1, 22 FEB 2024 to 21 MAR 2024

WAAS CH 49010 W23A	APP CRS 233°	Rwy Idg TDZE Apt Elev	8002 661 668
--	------------------------	-----------------------------	---

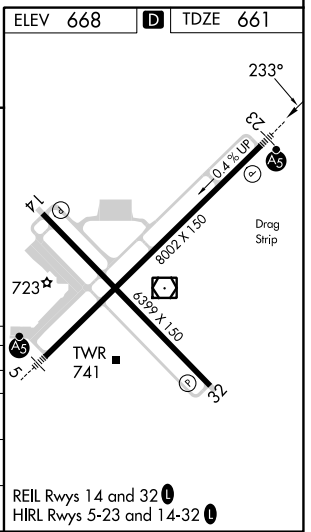
RNAV (GPS) RWY 23

MBS INTL (MBS)

<p>▽ For uncompensated Baro-VNAV systems, LNAV/VNAV NA below -18°C (0°F) or above 54°C (130°F). DME/DME RNP-0.3 NA. For inoperative ALS, increase LNAV/VNAV all Cats visibility to RVR 4500. # RVR 1800 authorized with use of FD or AP or HUD to DA.</p>		<p>MALSR </p>	<p>MISSED APPROACH: Climb to 2300 direct WERDO and hold.</p>		
<p>ATIS 125.925</p>	<p>GREAT LAKES APP CON * 126.45 235.625</p>	<p>SAGINAW TOWER * 120.1 (CTAF) 257.7</p>	<p>GND CON 121.7</p>	<p>CLNC DEL 121.85</p>	<p>UNICOM 122.95</p>



<p>2300 WERDO</p>	<p>JURBO FOROX 4 NM Holding Pattern</p>			
<p>*LNAV only</p>	<p>*1.1 NM to RW23</p>	<p>2300</p>	<p>233°</p>	<p>053° → 2300</p>
<p>RW23</p>	<p>1.1</p>	<p>3.9 NM</p>	<p>6 NM</p>	<p>GP 3.00° TCH 54</p>
CATEGORY	A	B	C	D
LPV DA #		861/24	200 (200-½)	
LNAV/VNAV DA		940/24	279 (300-½)	
LNAV MDA	1060/24	399 (400-½)	1060/35	399 (400-¾)
C CIRCLING	1080-1 412 (500-1)	1120-1 452 (500-1)	1240-1½ 572 (600-1½)	1240-2 572 (600-2)



EC-1, 22 FEB 2024 to 21 MAR 2024

EC-1, 22 FEB 2024 to 21 MAR 2024

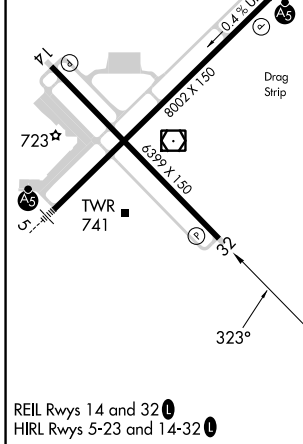
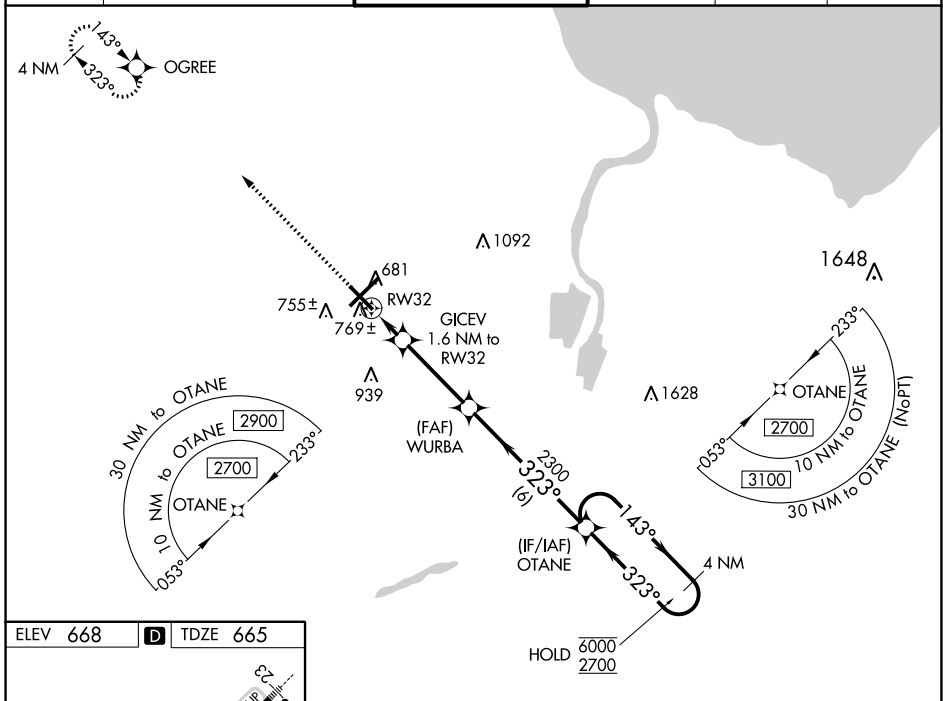
WAAS CH 78011 W32A	APP CRS 323°	Rwy Idg TDZE Apt Elev	6399 665 668
---------------------------------	------------------------	-----------------------------	---

RNAV (GPS) RWY 32

MBS INTL (MBS)

RNP APCH.		MISSED APPROACH: Climb to 2300 direct OGRE and hold.			
For uncompensated Baro-VNAV systems, LNAV/VNAV NA below -18°C or above 54°C.					

ATIS 125.925	GREAT LAKES APP CON * 126.45 235.625	SAGINAW TOWER * 120.1 (CTAF) 0 257.7	GND CON 121.7	CLNC DEL 121.85	UNICOM 122.95
------------------------	--	--	-------------------------	---------------------------	-------------------------



ELEV 668	D	TDZE 665		
OGRE		4 NM Holding Pattern		
* LNAV only.		GICEV 1.6 NM to RW32	WURBA 2300	OTANE
RW32		143° → 6000 ← 323° 2700 GP 3.00° TCH 50		
1 NM 0.6 NM 3.4 NM 6 NM				
CATEGORY	A	B	C	D
LPV DA		865- ³ / ₄	200 (200- ³ / ₄)	
LNAV/VNAV DA		950- ⁷ / ₈	285 (300- ⁷ / ₈)	
LNAV MDA		1020-1	355 (400-1)	
C CIRCLING	1080-1 412 (500-1)	1120-1 452 (500-1)	1240-1½ 572 (600-1½)	1240-2 572 (600-2)

EC-1, 22 FEB 2024 to 21 MAR 2024

EC-1, 22 FEB 2024 to 21 MAR 2024

WAAS CH 82010 W05A	APP CRS 053°	Rwy Idg TDZE Apt Elev	8002 666 668
--	------------------------	-----------------------------	---

RNAV (GPS) RWY 5

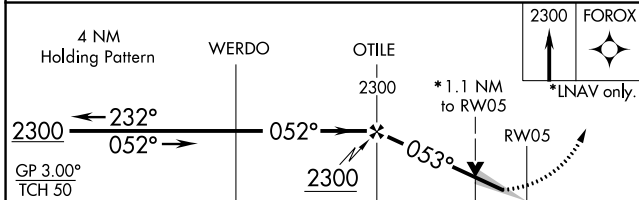
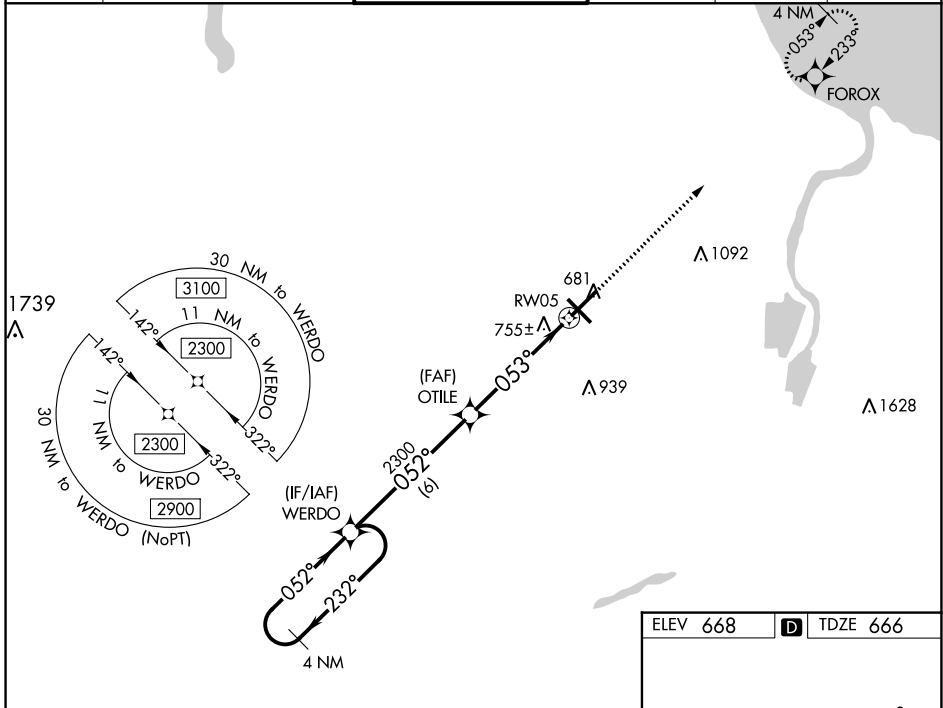
MBS INTL (MBS)

▽ For uncompensated Baro-VNAV systems, LNAV/VNAV NA below -18°C (0°F) or above 54°C (130°F). DME/DME RNP-0.3 NA. For inoperative ALS, increase LNAV/VNAV all Cats visibility to RVR 4500 and LNAV Cats C/D visibility to RVR 6000.
** RVR 1800 authorized with use of FD or AP or HUD to DA.

MALSRL

MISSED APPROACH:
Climb to 2300 direct FOROX and hold.

ATIS 125.925	GREAT LAKES APP CON* 126.45 235.625	SAGINAW TOWER * 120.1(CTAF) 0 257.7	GND CON 121.7	CLNC DEL 121.85	UNICOM 122.95
------------------------	---	---	-------------------------	---------------------------	-------------------------



ELEV 668 **D** TDZE 666

RWY 5 diagram showing the runway layout. Key features include:

- Runway:** RWY 5, 6360' X 130', heading 053°.
- Taxiway:** TWY 1, 6360' X 150', heading 053°.
- Tower:** TWR 741.
- Obstacles:** 723, 741, 741, 741.
- Other Aids:** 4 NM to FOROX, 4 NM to RW05.

CATEGORY	A	B	C	D
LPV DA**		866/24	200 (200-½)	
LNAV/ VNAV DA		955/24	289 (300-½)	
LNAV MDA	1080/24	414 (500-½)	1080/40	414 (500-¾)
C CIRCLING	1080-1 412 (500-1)	1120-1 452 (500-1)	1240-1½ 572 (600-1½)	1240-2 572 (600-2)

EC-1, 22 FEB 2024 to 21 MAR 2024

EC-1, 22 FEB 2024 to 21 MAR 2024

VOR/DME MBS 112.9 Chan 76	APP CRS 131°	Rwy Idg TDZE Apt Elev	6399 668 668
---	------------------------	-----------------------------	---

VOR RWY 14

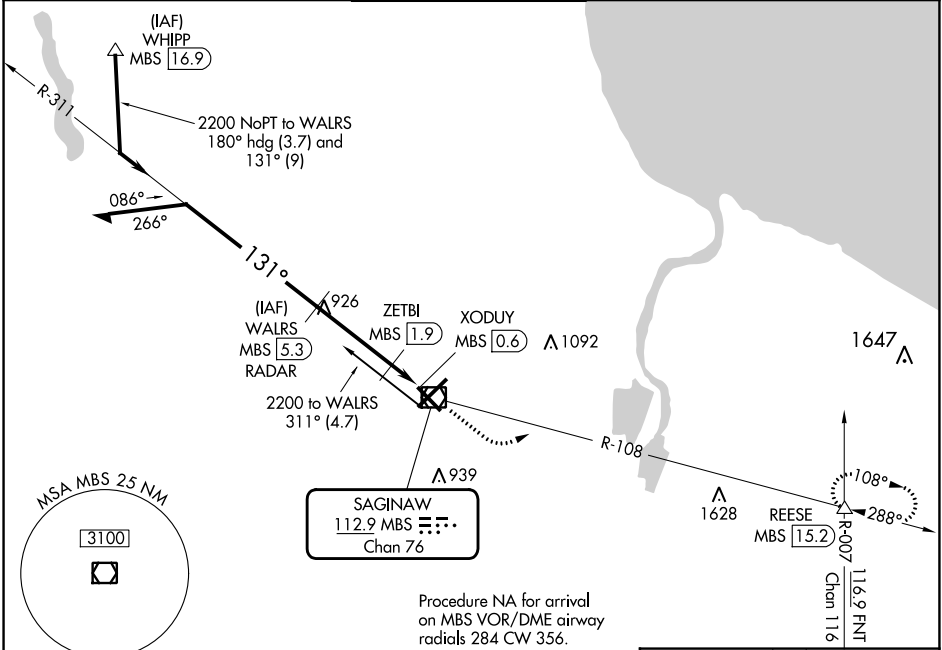
MBS INTL (MBS)

DME or RADAR required.

▽
▲

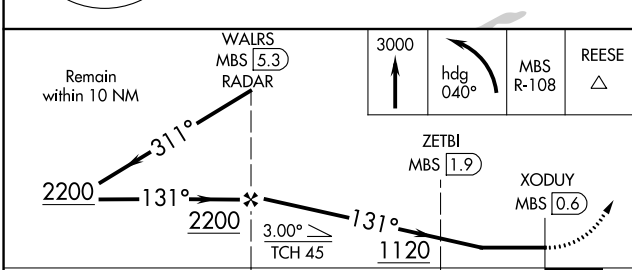
MISSED APPROACH: Climb to 3000 then left turn on heading 040° and MBS R-108 to REESE INT/15.2 DME and hold.

ATIS 125.925	GREAT LAKES APP CON* 126.45 235.625	SAGINAW TOWER* 120.1(CTAF) 0 257.7	GND CON 121.7	CLNC DEL 121.85	UNICOM 122.95
------------------------	---	--	-------------------------	---------------------------	-------------------------

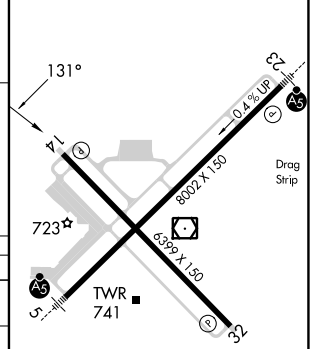


EC-1, 22 FEB 2024 to 21 MAR 2024

EC-1, 22 FEB 2024 to 21 MAR 2024



ELEV 668	D	TDZE 668
----------	----------	----------



CATEGORY	A	B	C	D
S-14	1120-1	452 (500-1)	1120-1 $\frac{3}{8}$	452 (500-1 $\frac{3}{8}$)
C CIRCLING	1120-1	452 (500-1)	1240-1 $\frac{1}{2}$ 572 (600-1 $\frac{1}{2}$)	1240-2 572 (600-2)
ZETBI FIX MINIMUMS (DME REQUIRED)				
S-14	1040-1	372 (400-1)	1040-1 $\frac{3}{8}$	372 (400-1 $\frac{3}{8}$)
C CIRCLING	1080-1 412 (500-1)	1120-1 452 (500-1)	1240-1 $\frac{1}{2}$ 572 (600-1 $\frac{1}{2}$)	1240-2 572 (600-2)

REIL Rwy 14 and 32 **1**
HIRL Rwy 5-23 and 14-32 **1**